

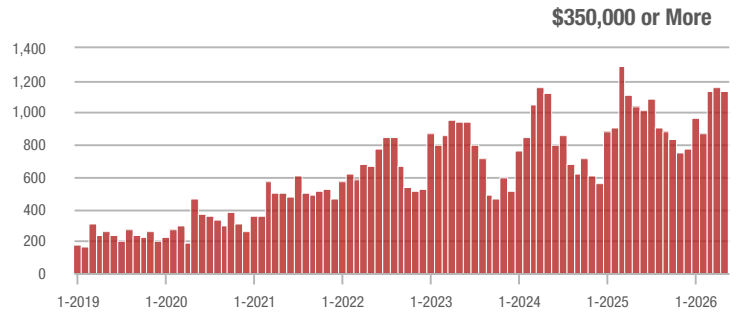
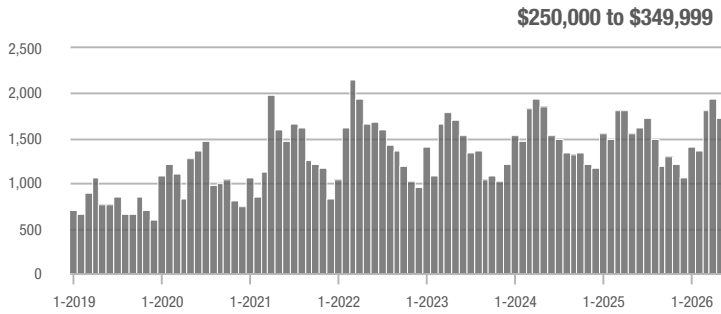
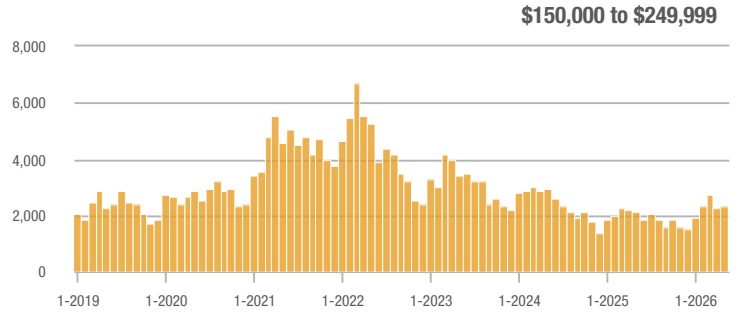
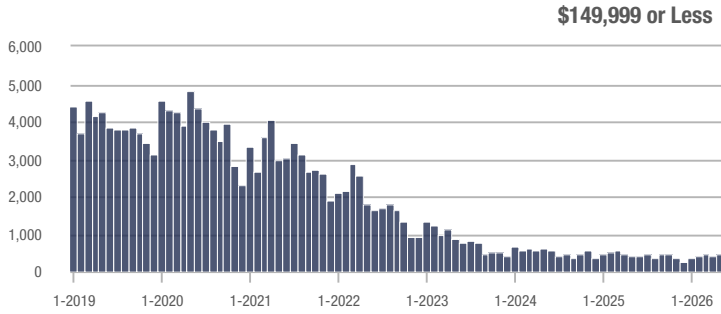
# Showing Statistics

MLS Area	Total Showings	Buyer Interest (Showings / Listings)	Managed Listings
Cumberland County	5,684	4.2	1,464
Fayetteville	4,449	4.1	1,171
Harnett County	901	2.8	391
Zip Code 28314	1,126	4.6	260
Hoke County	957	3.3	325
Raeford	853	3.5	271
Sanford	555	3.5	185
Zip Code 28311	618	3.7	179
Zip Code 28306	791	4.4	202
Hope Mills	873	5.2	184
Lee County	369	3.2	141
Zip Code 28304	672	4.3	167
Zip Code 27332	329	3.7	95
Zip Code 28303	633	4.3	155
Spring Lake	317	2.5	147
Robeson County	472	2.3	223
Cameron	215	3.8	63
Zip Code 27330	221	3.5	86
Zip Code 28312	226	3.0	82
Moore County	223	2.5	120
Lumberton	243	2.4	108
Zip Code 28305	182	3.0	61
Lillington	116	1.9	84
Zip Code 28358	191	2.3	89
Bunnlevel	61	3.8	20
Sampson County	112	2.5	52
Zip Code 28301	187	3.0	67
Parkton	105	2.2	43
Stedman	83	5.5	17
Dunn	70	2.0	40

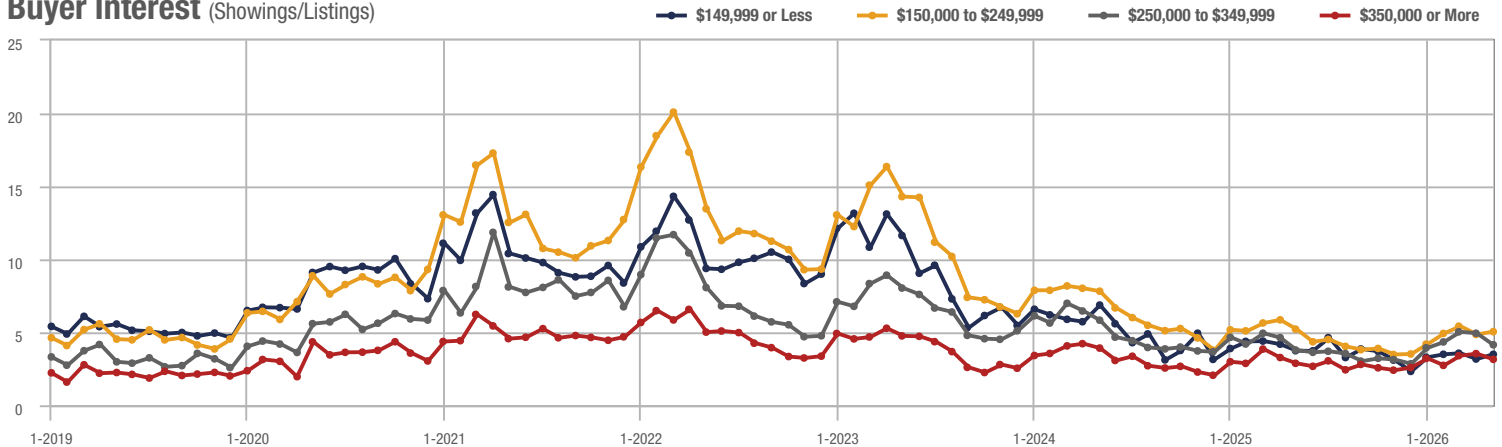
# Cumberland County

Price Range	Total Showings			Buyer Interest (Showings/Listings)			Managed Listings		
	May 2026	Year-Over-Year Change	Month-Over-Month Change	May 2026	Year-Over-Year Change	Month-Over-Month Change	May 2026	Year-Over-Year Change	Month-Over-Month Change
\$149,999 or Less	474	+ 11.5%	+ 15.9%	3.5	- 5.4%	+ 10.1%	138	+ 11.3%	0.0%
\$150,000 to \$249,999	2,353	+ 11.5%	+ 5.6%	5.0	- 3.8%	+ 3.9%	502	+ 17.3%	- 0.6%
\$250,000 to \$349,999	1,726	+ 10.2%	- 11.1%	4.1	+ 7.9%	- 16.0%	450	- 10.4%	+ 4.9%
\$350,000 or More	1,131	+ 8.1%	- 2.8%	3.2	+ 10.3%	- 11.0%	374	- 12.8%	+ 3.3%
<b>Total</b>	<b>5,684</b>	<b>+ 10.4%</b>	<b>- 1.0%</b>	<b>4.2</b>	<b>+ 11.8%</b>	<b>- 3.0%</b>	<b>1,464</b>	<b>- 1.3%</b>	<b>+ 2.1%</b>

## Showings



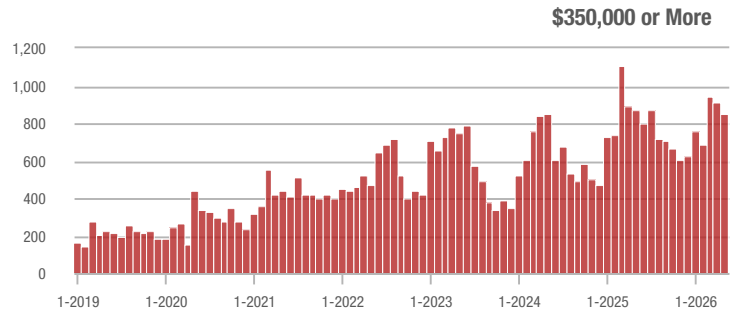
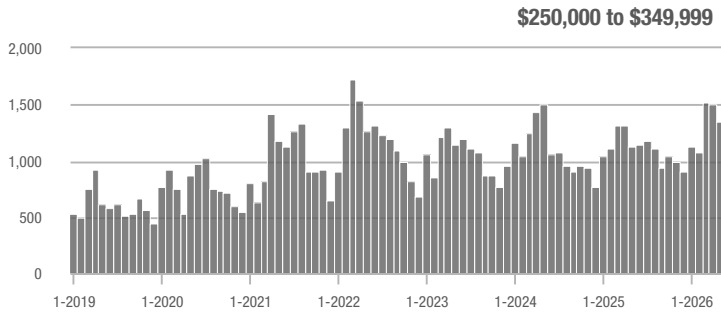
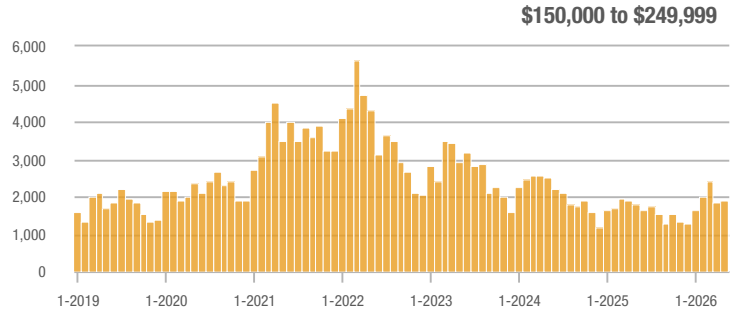
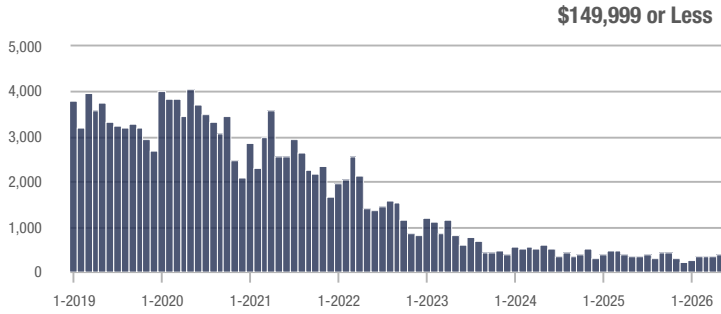
## Buyer Interest (Showings/Listings)



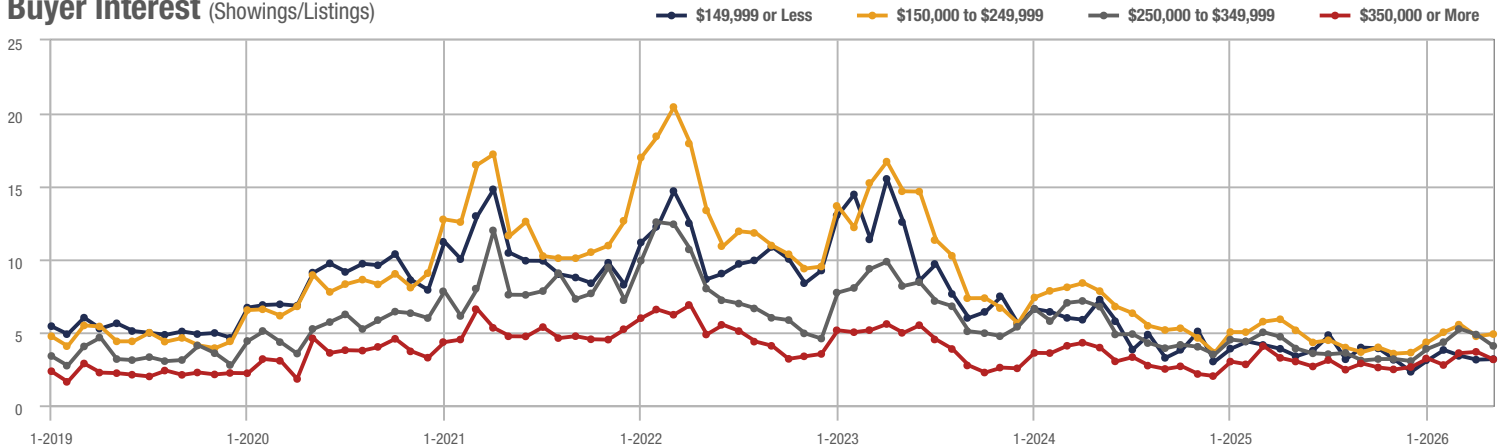
## Fayetteville

Price Range	Total Showings			Buyer Interest (Showings/Listings)			Managed Listings		
	May 2026	Year-Over-Year Change	Month-Over-Month Change	May 2026	Year-Over-Year Change	Month-Over-Month Change	May 2026	Year-Over-Year Change	Month-Over-Month Change
\$149,999 or Less	371	+ 4.9%	+ 8.2%	3.2	- 5.9%	+ 1.2%	120	+ 9.1%	0.0%
\$150,000 to \$249,999	1,884	+ 4.9%	+ 0.9%	4.9	- 3.9%	+ 3.2%	416	+ 13.0%	- 3.9%
\$250,000 to \$349,999	1,347	+ 19.6%	- 10.0%	4.1	+ 5.1%	- 16.1%	353	+ 2.0%	+ 5.7%
\$350,000 or More	847	- 3.1%	- 7.4%	3.1	+ 3.3%	- 14.1%	282	- 18.5%	+ 2.2%
<b>Total</b>	<b>4,449</b>	<b>+ 7.4%</b>	<b>- 3.8%</b>	<b>4.1</b>	<b>+ 7.3%</b>	<b>- 4.4%</b>	<b>1,171</b>	<b>+ 0.1%</b>	<b>+ 0.7%</b>

### Showings



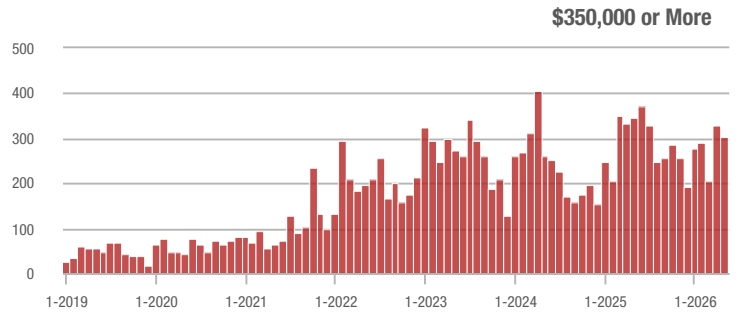
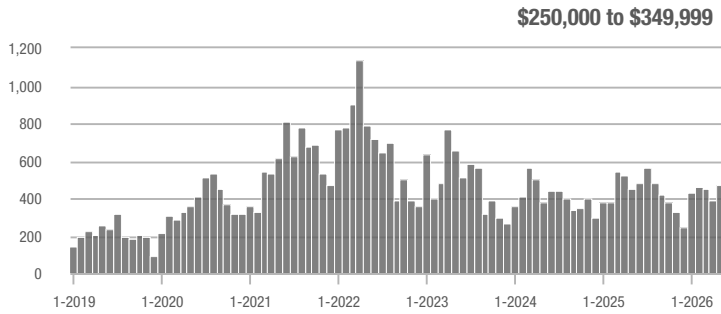
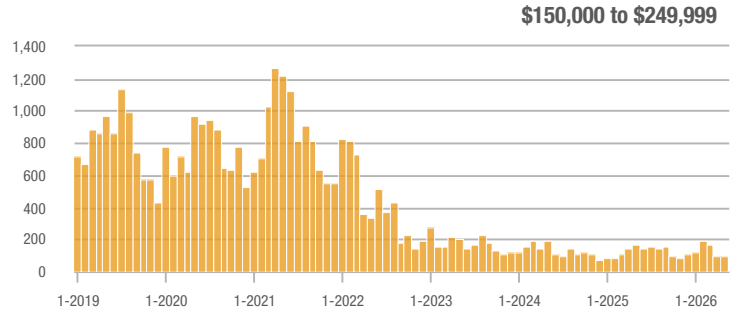
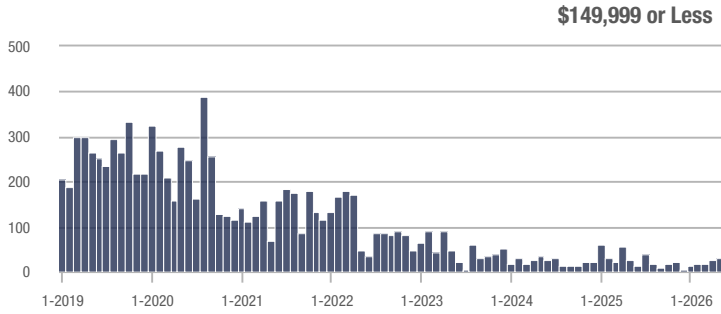
### Buyer Interest (Showings/Listings)



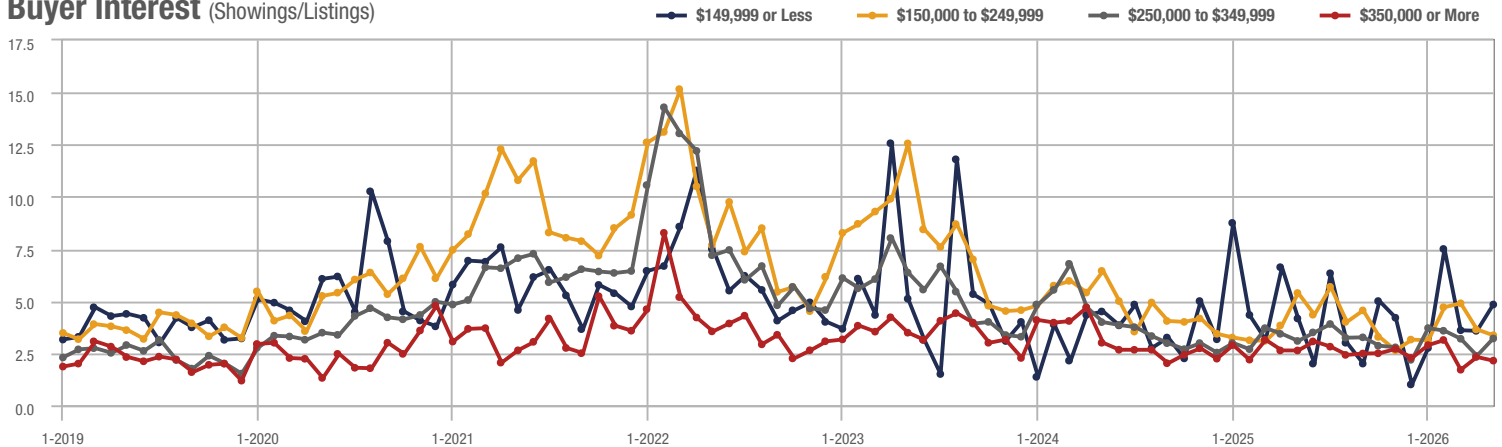
## Harnett County

Price Range	Total Showings			Buyer Interest (Showings/Listings)			Managed Listings		
	May 2026	Year-Over-Year Change	Month-Over-Month Change	May 2026	Year-Over-Year Change	Month-Over-Month Change	May 2026	Year-Over-Year Change	Month-Over-Month Change
\$149,999 or Less	29	- 43.2%	+ 16.0%	4.8	+ 14.3%	+ 35.3%	6	- 25.0%	- 14.3%
\$150,000 to \$249,999	96	- 43.2%	+ 4.3%	3.4	- 37.0%	- 7.6%	27	- 27.0%	0.0%
\$250,000 to \$349,999	471	+ 5.1%	+ 19.8%	3.2	+ 3.2%	+ 34.8%	192	- 5.9%	- 9.0%
\$350,000 or More	305	- 11.8%	- 6.7%	2.1	- 19.2%	- 7.5%	166	+ 5.1%	- 1.8%
<b>Total</b>	<b>901</b>	<b>- 8.9%</b>	<b>+ 7.6%</b>	<b>2.8</b>	<b>- 5.2%</b>	<b>+ 14.0%</b>	<b>391</b>	<b>- 3.9%</b>	<b>- 5.6%</b>

### Showings



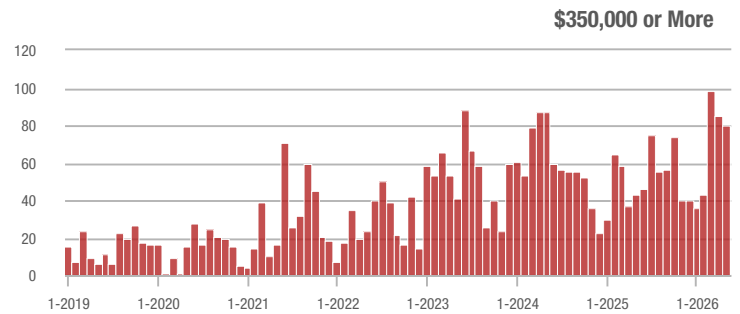
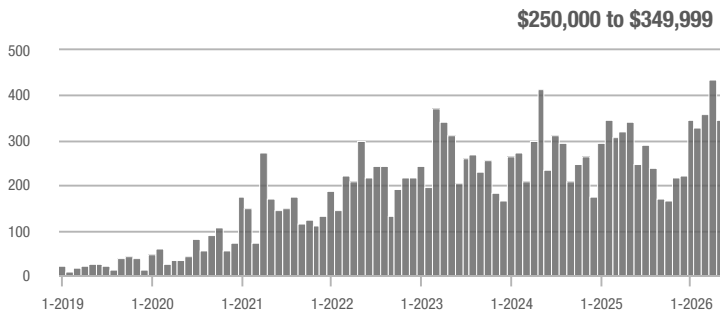
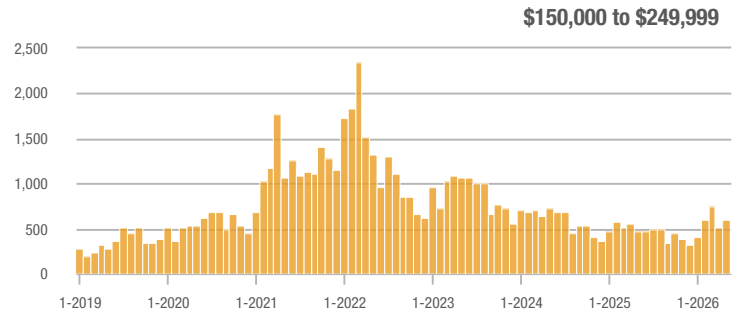
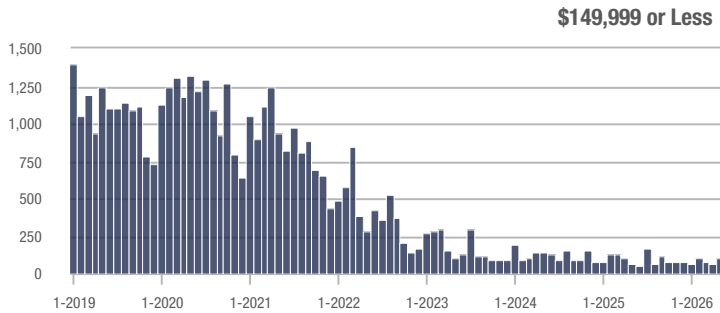
### Buyer Interest (Showings/Listings)



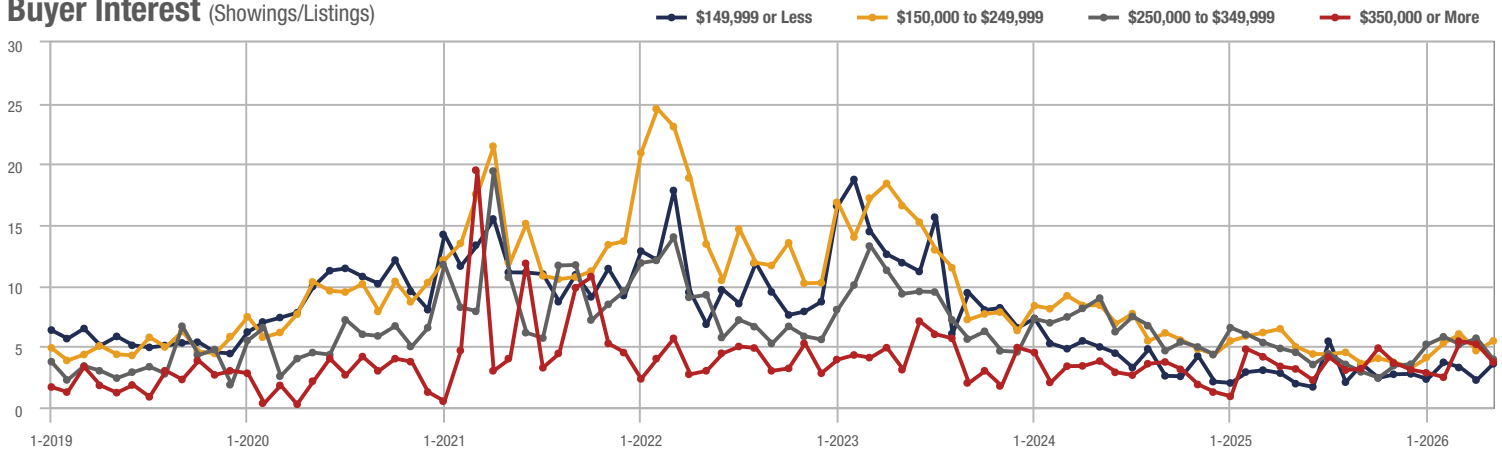
# Zip Code 28314

Price Range	Total Showings			Buyer Interest (Showings/Listings)			Managed Listings		
	May 2026	Year-Over-Year Change	Month-Over-Month Change	May 2026	Year-Over-Year Change	Month-Over-Month Change	May 2026	Year-Over-Year Change	Month-Over-Month Change
\$149,999 or Less	101	+ 28.9%	+ 60.3%	3.6	+ 89.5%	+ 59.7%	30	- 25.0%	- 6.3%
\$150,000 to \$249,999	598	+ 28.9%	+ 16.1%	5.5	+ 10.0%	+ 17.2%	118	+ 24.2%	- 2.5%
\$250,000 to \$349,999	347	+ 1.8%	- 20.6%	3.9	- 13.3%	- 30.6%	90	+ 16.9%	+ 11.1%
\$350,000 or More	80	+ 86.0%	- 5.9%	3.7	+ 15.6%	- 28.4%	22	+ 37.5%	+ 22.2%
<b>Total</b>	<b>1,126</b>	<b>+ 22.8%</b>	<b>+ 2.4%</b>	<b>4.6</b>	<b>+ 7.7%</b>	<b>- 0.8%</b>	<b>260</b>	<b>+ 14.0%</b>	<b>+ 3.2%</b>

## Showings



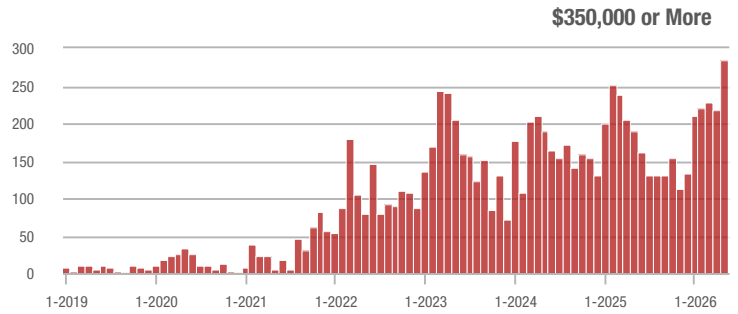
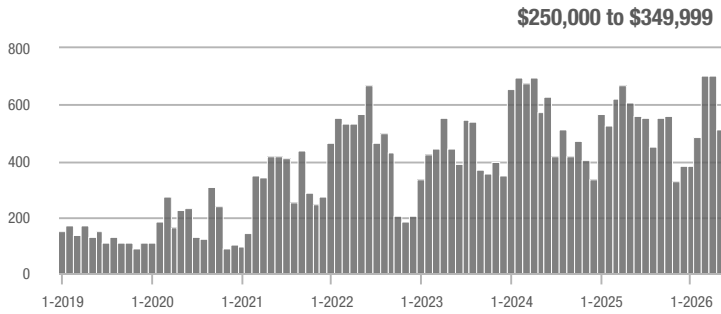
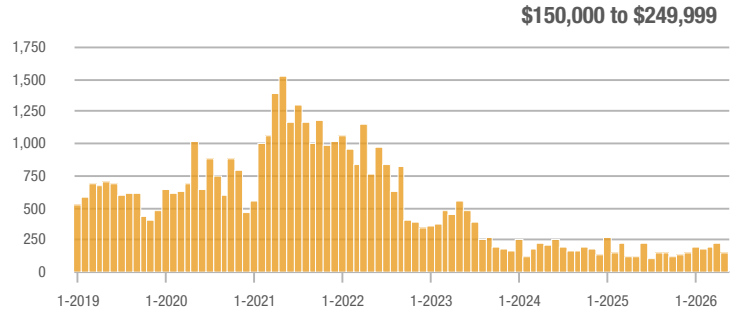
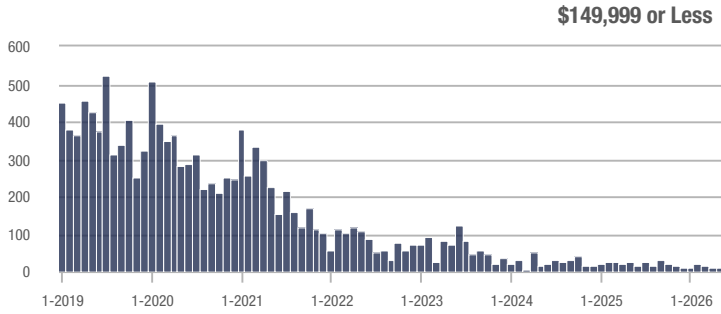
## Buyer Interest (Showings/Listings)



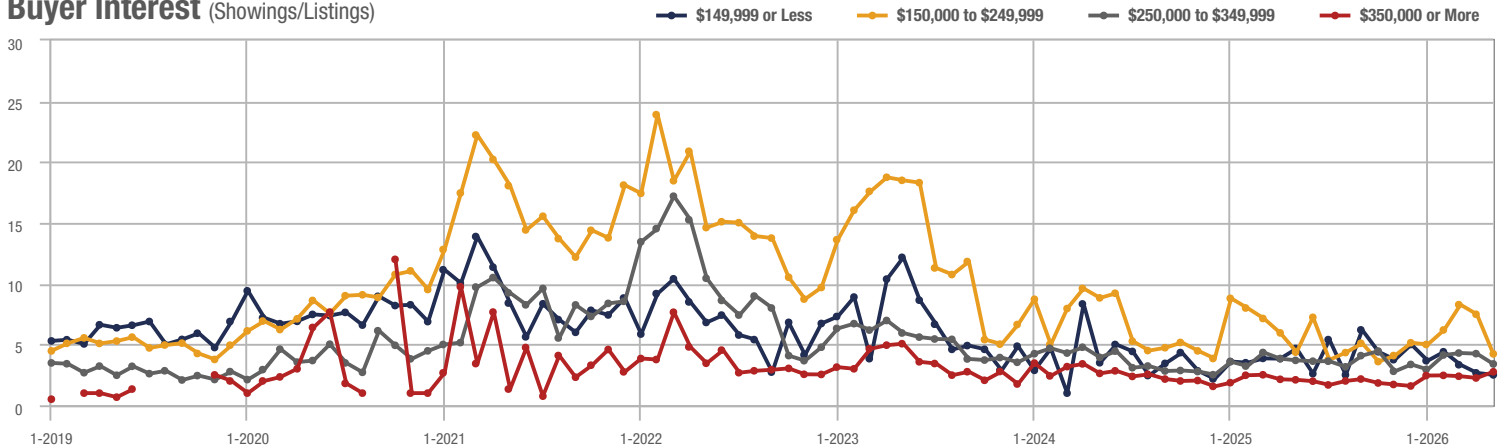
# Hoke County

Price Range	Total Showings			Buyer Interest (Showings/Listings)			Managed Listings		
	May 2026	Year-Over-Year Change	Month-Over-Month Change	May 2026	Year-Over-Year Change	Month-Over-Month Change	May 2026	Year-Over-Year Change	Month-Over-Month Change
\$149,999 or Less	11	+ 25.2%	+ 37.5%	2.5	- 46.8%	- 6.3%	5	- 16.7%	+ 25.0%
\$150,000 to \$249,999	149	+ 25.2%	- 33.2%	4.2	- 4.5%	- 43.5%	37	+ 23.3%	+ 12.1%
\$250,000 to \$349,999	513	- 15.9%	- 26.9%	3.4	- 8.1%	- 19.9%	181	- 10.8%	- 3.7%
\$350,000 or More	284	+ 49.5%	+ 30.9%	2.8	+ 33.3%	+ 22.6%	102	- 17.1%	- 1.9%
<b>Total</b>	<b>957</b>	<b>+ 1.1%</b>	<b>- 16.8%</b>	<b>3.3</b>	<b>+ 12.6%</b>	<b>- 15.8%</b>	<b>325</b>	<b>- 10.2%</b>	<b>- 1.2%</b>

## Showings



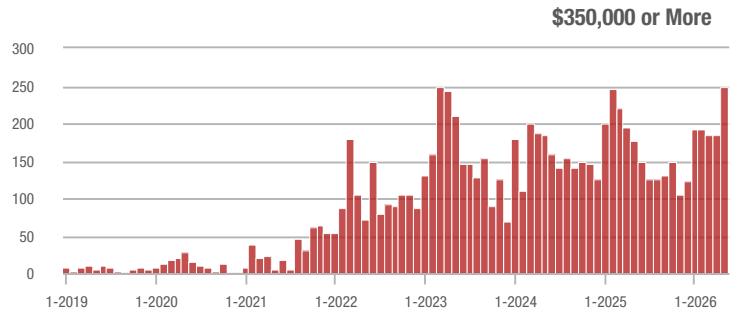
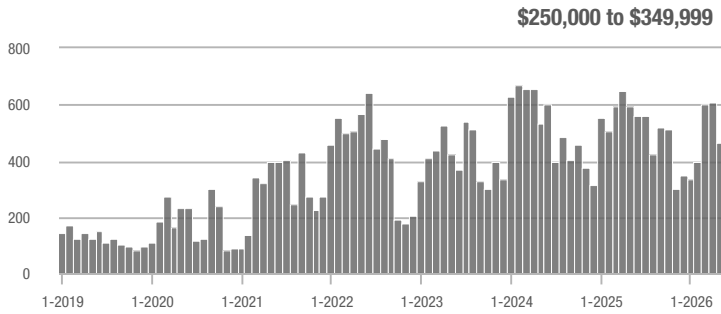
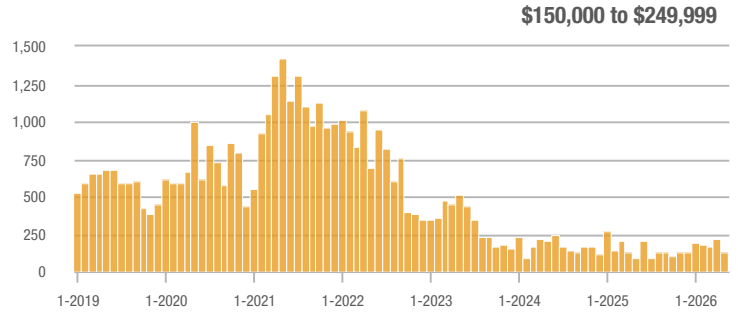
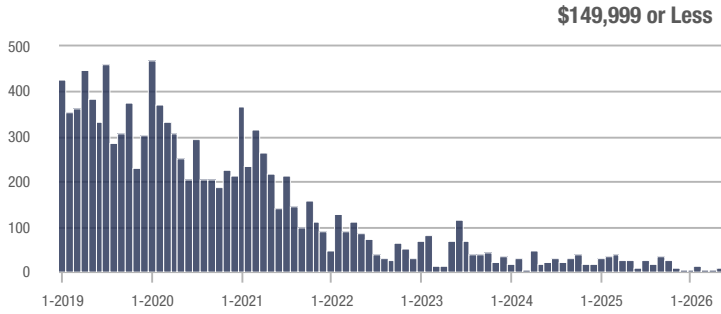
## Buyer Interest (Showings/Listings)



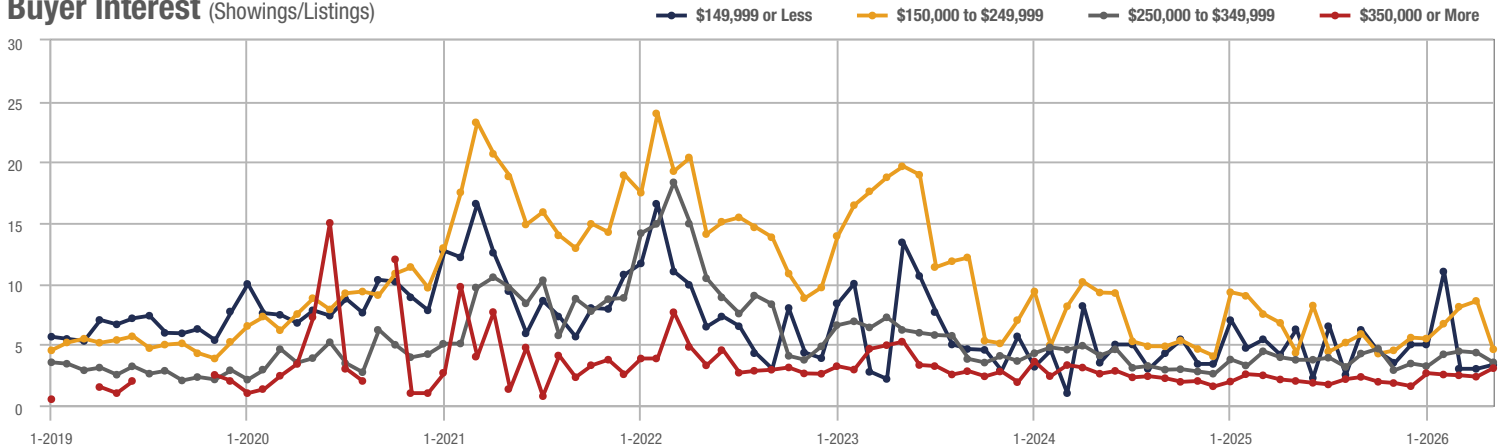
## Raeford

Price Range	Total Showings			Buyer Interest (Showings/Listings)			Managed Listings		
	May 2026	Year-Over-Year Change	Month-Over-Month Change	May 2026	Year-Over-Year Change	Month-Over-Month Change	May 2026	Year-Over-Year Change	Month-Over-Month Change
\$149,999 or Less	10	+ 36.8%	+ 233.3%	3.3	- 47.6%	+ 11.1%	3	- 40.0%	+ 200.0%
\$150,000 to \$249,999	130	+ 36.8%	- 38.7%	4.6	+ 7.0%	- 46.3%	30	+ 25.0%	+ 7.1%
\$250,000 to \$349,999	463	- 22.1%	- 24.1%	3.5	- 5.4%	- 18.5%	155	- 18.4%	- 4.9%
\$350,000 or More	250	+ 40.4%	+ 35.1%	3.1	+ 55.0%	+ 29.8%	83	- 30.8%	- 4.6%
<b>Total</b>	<b>853</b>	<b>- 4.4%</b>	<b>- 15.5%</b>	<b>3.5</b>	<b>+ 19.6%</b>	<b>- 13.1%</b>	<b>271</b>	<b>- 20.1%</b>	<b>- 2.9%</b>

### Showings



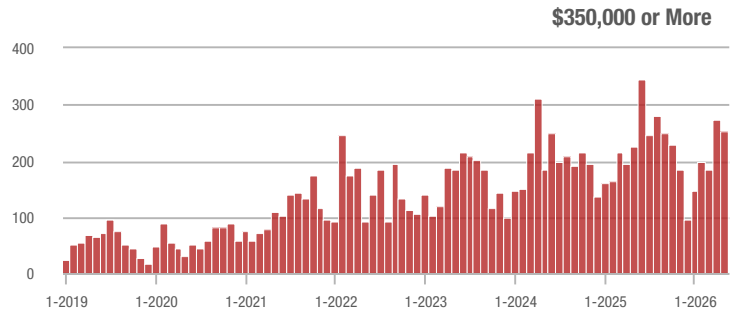
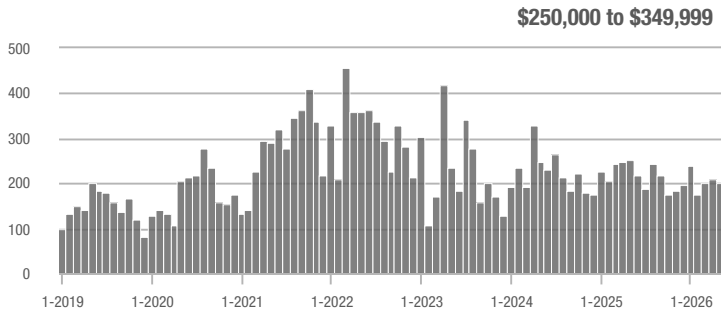
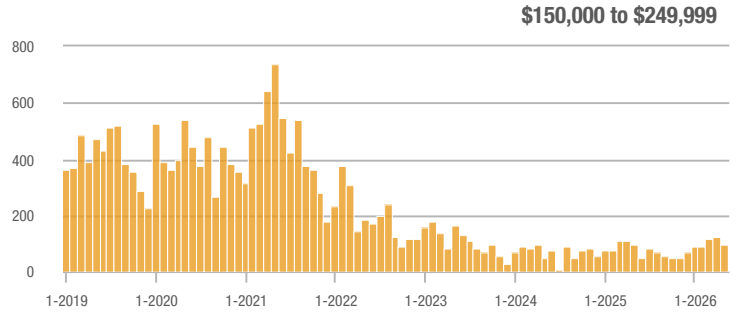
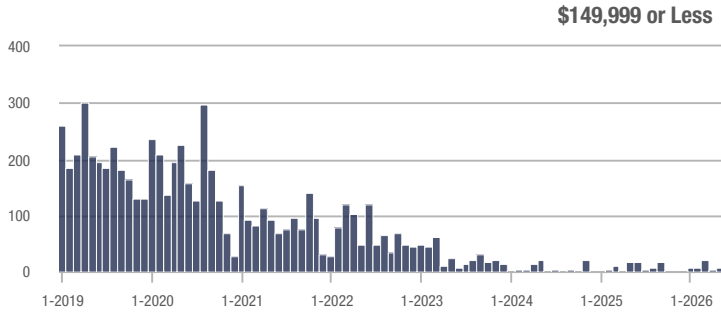
### Buyer Interest (Showings/Listings)



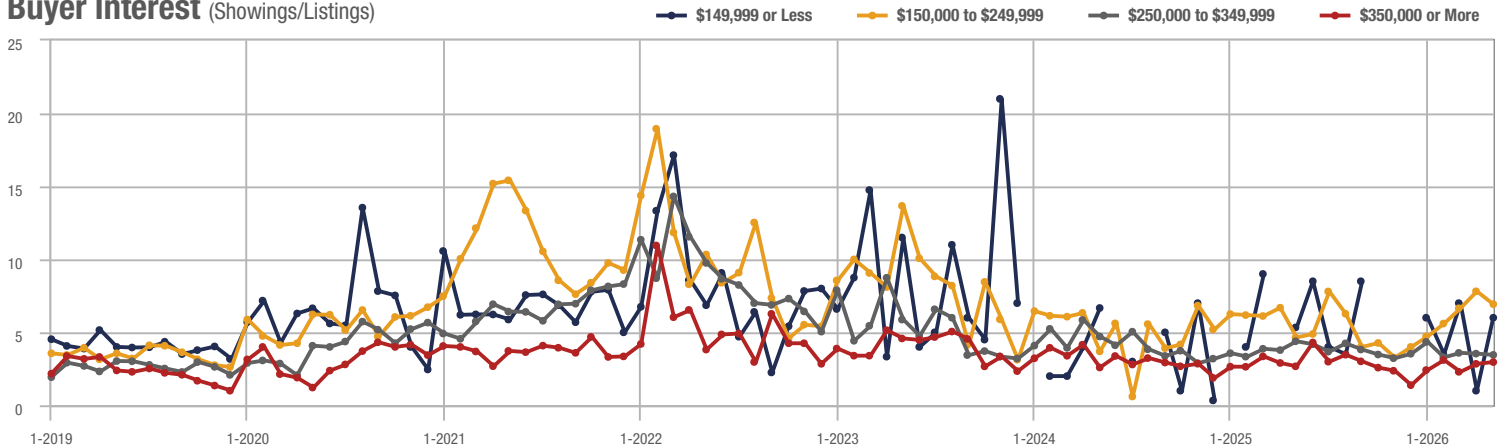
## Sanford

Price Range	Total Showings			Buyer Interest (Showings/Listings)			Managed Listings		
	May 2026	Year-Over-Year Change	Month-Over-Month Change	May 2026	Year-Over-Year Change	Month-Over-Month Change	May 2026	Year-Over-Year Change	Month-Over-Month Change
\$149,999 or Less	6	+ 3.2%	+ 50.0%	6.0	+ 13.2%	+ 500.0%	1	- 66.7%	- 75.0%
\$150,000 to \$249,999	97	+ 3.2%	- 22.4%	6.9	+ 46.8%	- 11.3%	14	- 36.4%	- 12.5%
\$250,000 to \$349,999	200	- 20.6%	- 5.2%	3.5	- 20.5%	- 2.4%	75	+ 7.1%	+ 2.7%
\$350,000 or More	252	+ 12.5%	- 7.7%	3.0	+ 11.1%	+ 4.2%	95	- 5.9%	- 12.0%
<b>Total</b>	<b>555</b>	<b>- 5.3%</b>	<b>- 9.5%</b>	<b>3.5</b>	<b>+ 0.3%</b>	<b>- 1.6%</b>	<b>185</b>	<b>- 5.6%</b>	<b>- 8.0%</b>

### Showings



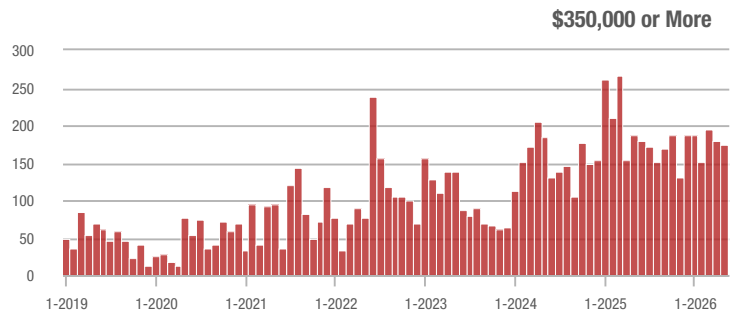
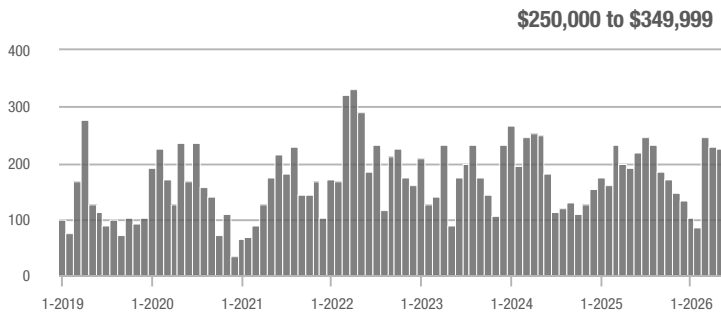
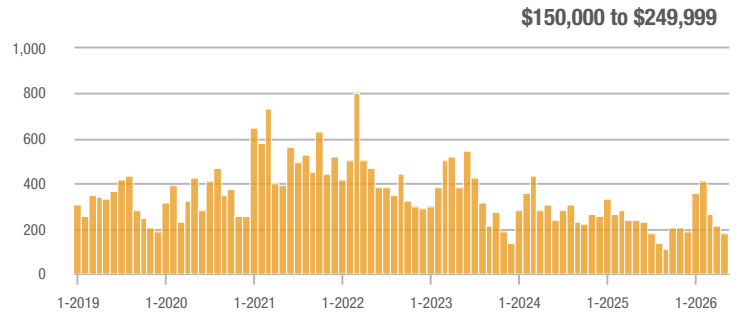
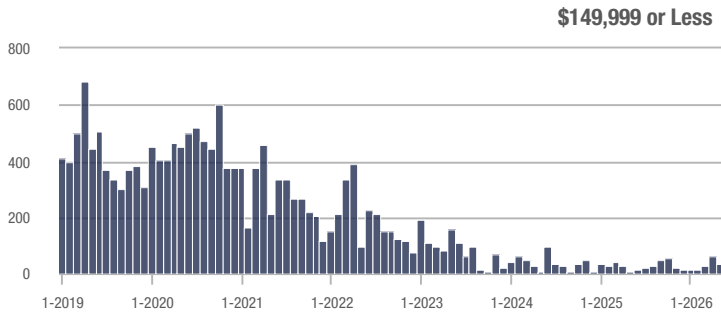
### Buyer Interest (Showings/Listings)



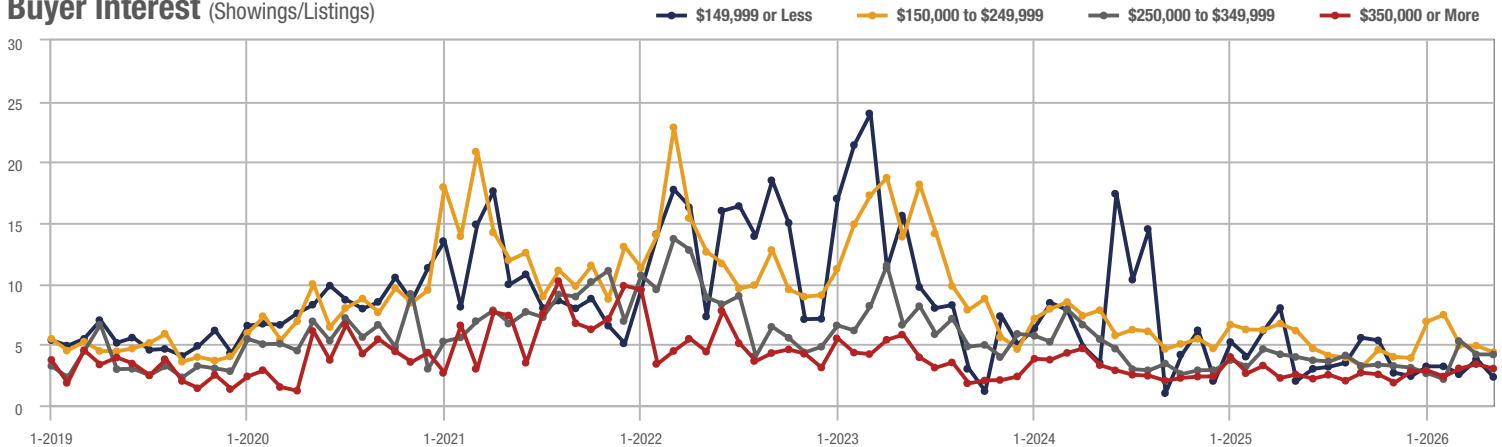
# Zip Code 28311

Price Range	Total Showings			Buyer Interest (Showings/Listings)			Managed Listings		
	May 2026	Year-Over-Year Change	Month-Over-Month Change	May 2026	Year-Over-Year Change	Month-Over-Month Change	May 2026	Year-Over-Year Change	Month-Over-Month Change
\$149,999 or Less	35	- 22.5%	- 42.6%	2.3	+ 15.0%	- 38.4%	16	+ 300.0%	0.0%
\$150,000 to \$249,999	183	- 22.5%	- 14.9%	4.4	- 27.9%	- 10.9%	45	+ 15.4%	- 10.0%
\$250,000 to \$349,999	226	+ 18.9%	- 0.9%	4.2	+ 5.0%	- 0.3%	61	- 6.2%	- 1.6%
\$350,000 or More	174	- 7.0%	- 3.3%	3.0	+ 20.0%	- 10.7%	57	- 38.7%	+ 3.6%
<b>Total</b>	<b>618</b>	<b>- 0.5%</b>	<b>- 9.6%</b>	<b>3.7</b>	<b>+ 11.7%</b>	<b>- 7.6%</b>	<b>179</b>	<b>- 10.9%</b>	<b>- 2.2%</b>

## Showings



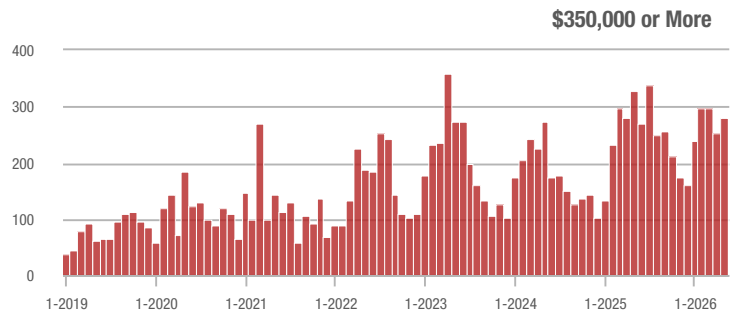
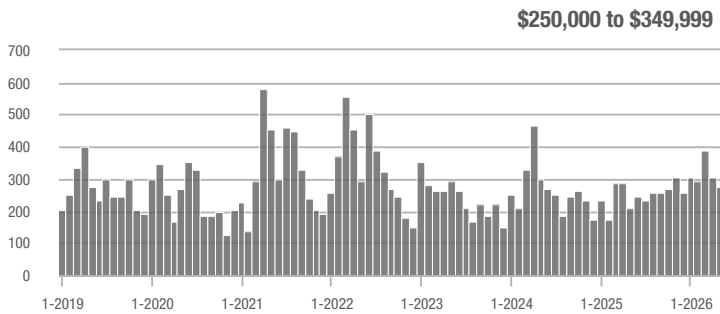
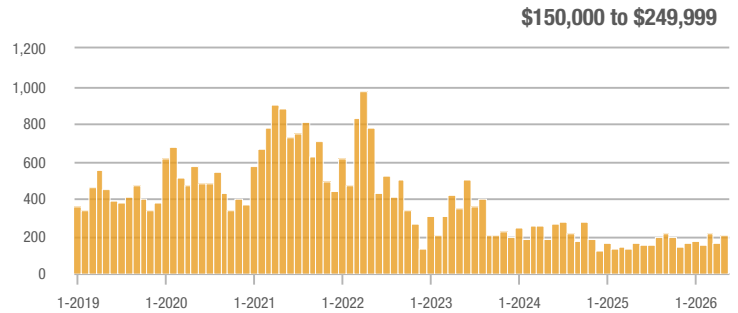
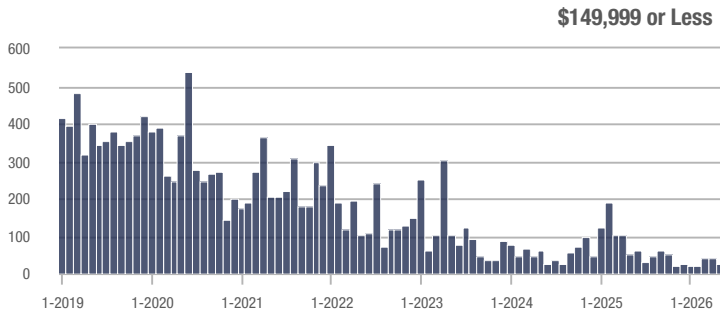
## Buyer Interest (Showings/Listings)



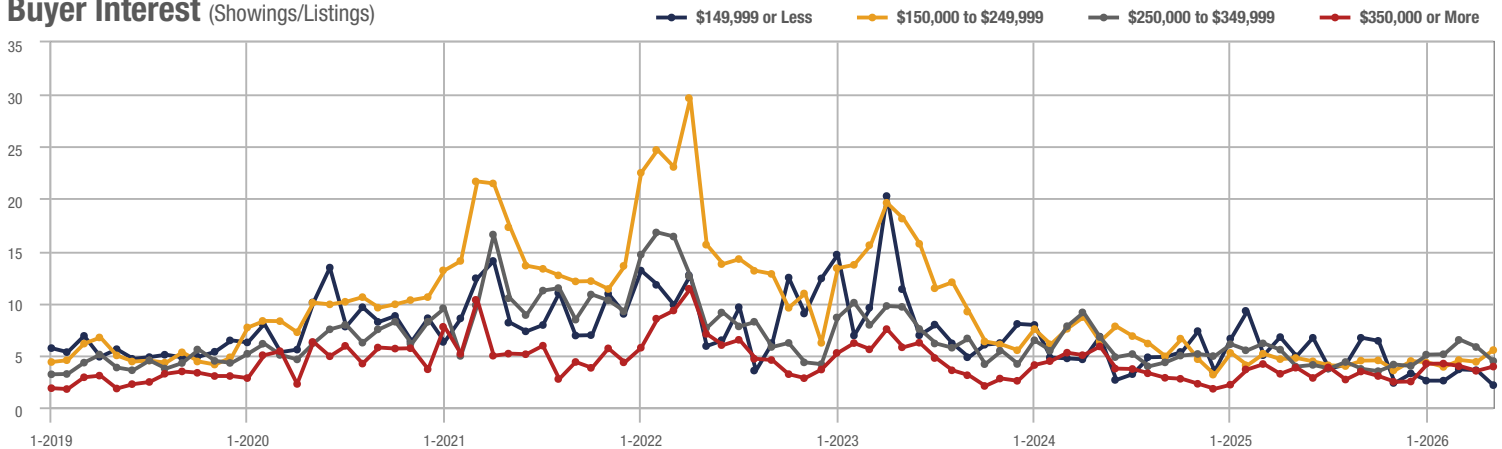
## Zip Code 28306

Price Range	Total Showings			Buyer Interest (Showings/Listings)			Managed Listings		
	May 2026	Year-Over-Year Change	Month-Over-Month Change	May 2026	Year-Over-Year Change	Month-Over-Month Change	May 2026	Year-Over-Year Change	Month-Over-Month Change
\$149,999 or Less	27	+ 29.0%	- 30.8%	2.1	- 57.1%	- 40.2%	11	0.0%	- 8.3%
\$150,000 to \$249,999	209	+ 29.0%	+ 30.6%	5.5	+ 17.0%	+ 25.8%	42	+ 13.5%	+ 2.4%
\$250,000 to \$349,999	276	+ 31.4%	- 9.2%	4.4	+ 12.8%	- 23.3%	69	+ 21.1%	+ 21.1%
\$350,000 or More	279	- 14.9%	+ 10.3%	3.9	+ 2.6%	+ 11.6%	80	- 20.8%	- 4.8%
<b>Total</b>	<b>791</b>	<b>+ 5.6%</b>	<b>+ 4.6%</b>	<b>4.4</b>	<b>+ 7.7%</b>	<b>+ 0.5%</b>	<b>202</b>	<b>- 1.9%</b>	<b>+ 4.1%</b>

### Showings



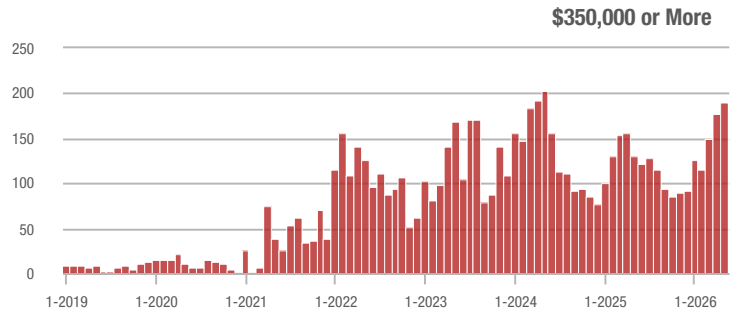
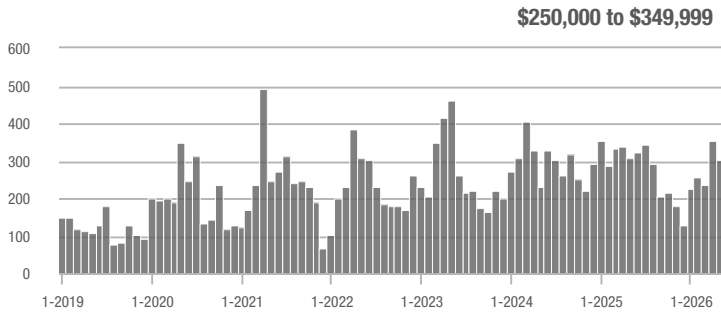
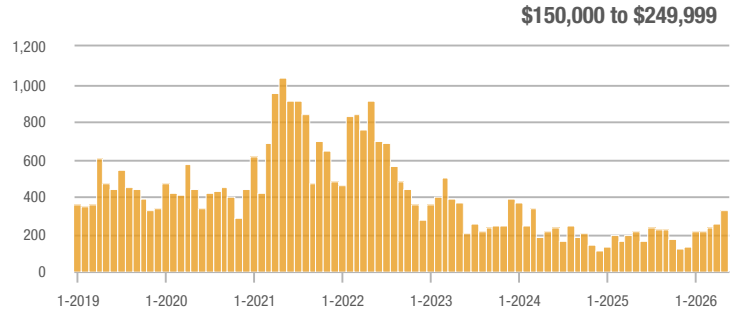
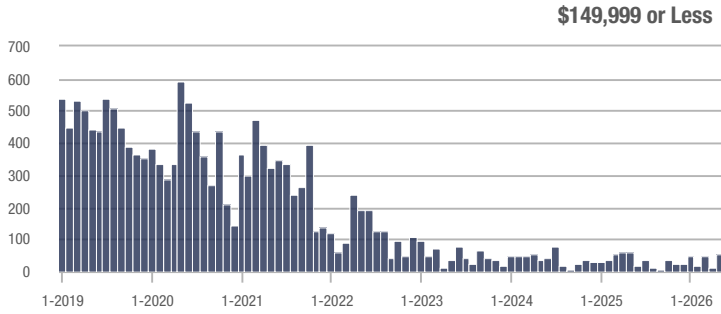
### Buyer Interest (Showings/Listings)



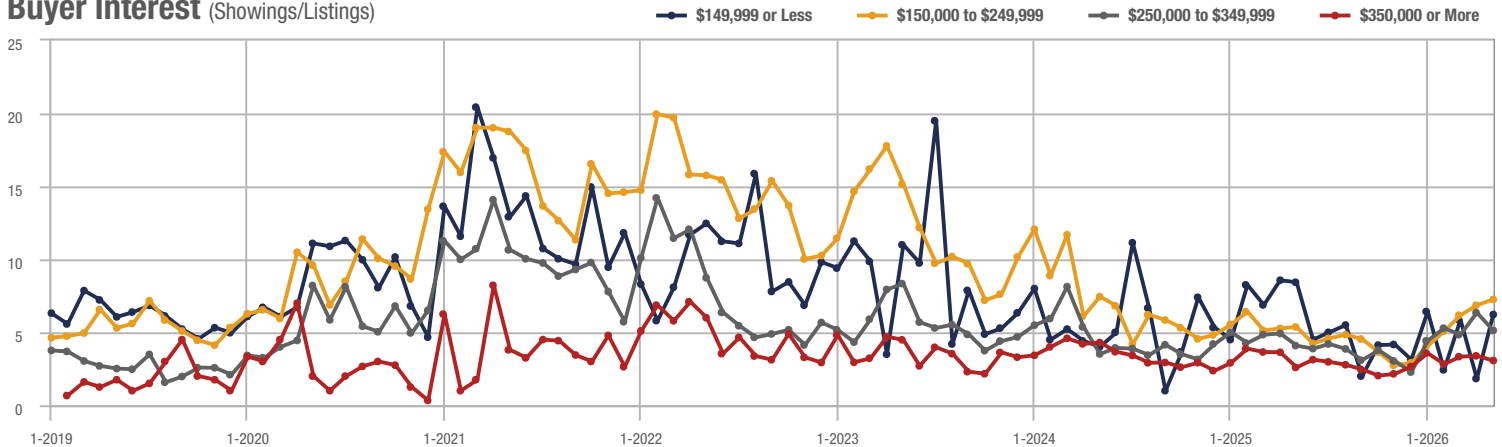
## Hope Mills

Price Range	Total Showings			Buyer Interest (Showings/Listings)			Managed Listings		
	May 2026	Year-Over-Year Change	Month-Over-Month Change	May 2026	Year-Over-Year Change	Month-Over-Month Change	May 2026	Year-Over-Year Change	Month-Over-Month Change
\$149,999 or Less	56	+ 47.7%	+ 330.8%	6.2	- 26.2%	+ 239.4%	9	+ 28.6%	+ 28.6%
\$150,000 to \$249,999	325	+ 47.7%	+ 29.0%	7.3	+ 35.2%	+ 5.8%	47	+ 4.4%	+ 17.5%
\$250,000 to \$349,999	301	- 1.6%	- 15.4%	5.1	+ 24.4%	- 19.3%	66	- 32.7%	+ 3.1%
\$350,000 or More	191	+ 46.9%	+ 7.9%	3.1	+ 19.2%	- 9.5%	62	+ 26.5%	+ 10.7%
<b>Total</b>	<b>873</b>	<b>+ 22.1%</b>	<b>+ 9.4%</b>	<b>5.2</b>	<b>+ 32.1%</b>	<b>- 0.7%</b>	<b>184</b>	<b>- 7.5%</b>	<b>+ 10.2%</b>

### Showings



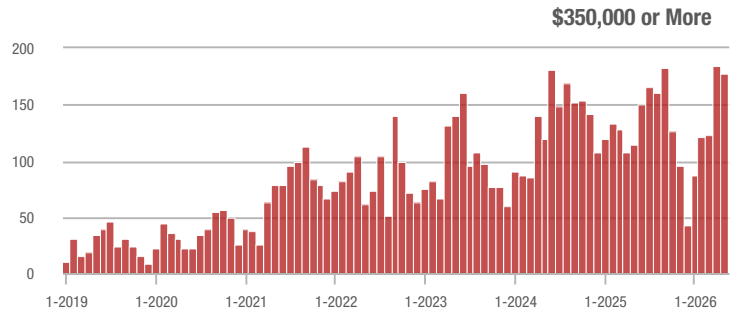
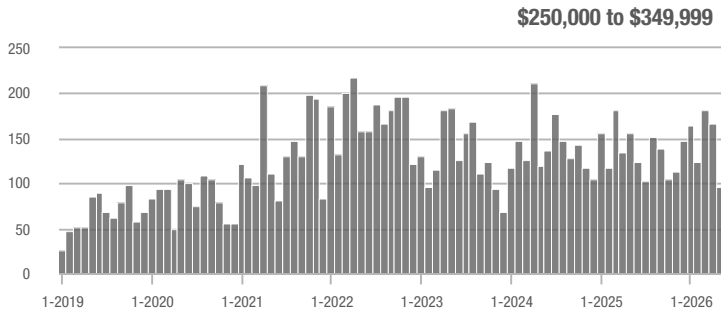
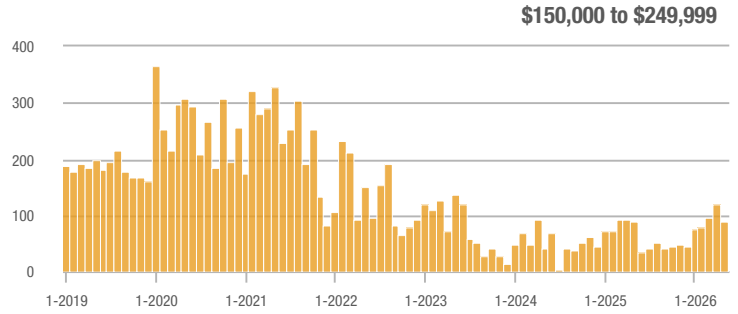
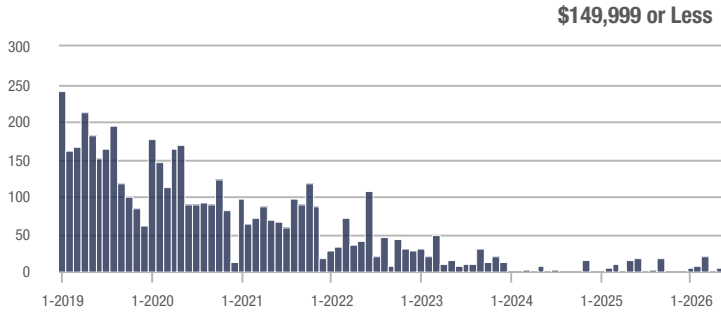
### Buyer Interest (Showings/Listings)



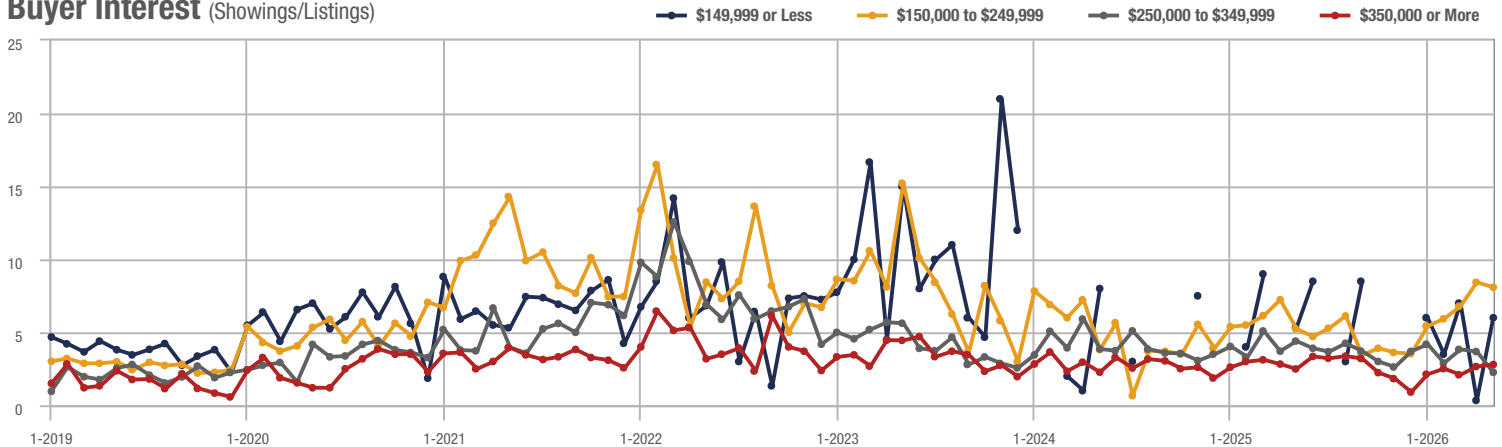
## Lee County

Price Range	Total Showings			Buyer Interest (Showings/Listings)			Managed Listings		
	May 2026	Year-Over-Year Change	Month-Over-Month Change	May 2026	Year-Over-Year Change	Month-Over-Month Change	May 2026	Year-Over-Year Change	Month-Over-Month Change
\$149,999 or Less	6	0.0%	+ 500.0%	6.0	+ 13.2%	+ 1,700.0%	1	- 66.7%	- 66.7%
\$150,000 to \$249,999	89	0.0%	- 24.6%	8.1	+ 55.8%	- 4.0%	11	- 38.9%	- 21.4%
\$250,000 to \$349,999	97	- 37.8%	- 41.6%	2.3	- 47.7%	- 38.8%	58	+ 45.0%	0.0%
\$350,000 or More	177	+ 53.9%	- 4.3%	2.8	+ 12.0%	+ 5.2%	71	+ 22.4%	- 10.1%
<b>Total</b>	<b>369</b>	<b>- 1.9%</b>	<b>- 21.5%</b>	<b>3.2</b>	<b>- 17.2%</b>	<b>- 14.3%</b>	<b>141</b>	<b>+ 18.5%</b>	<b>- 8.4%</b>

### Showings



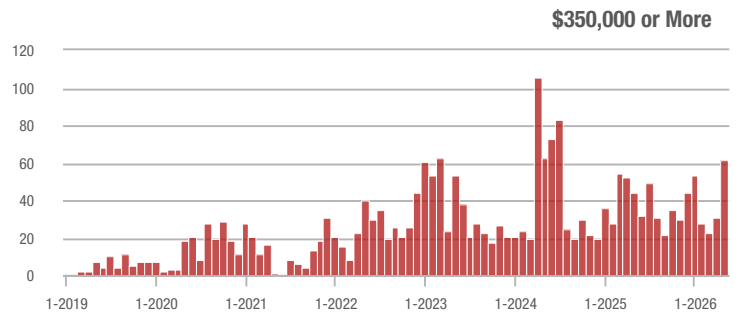
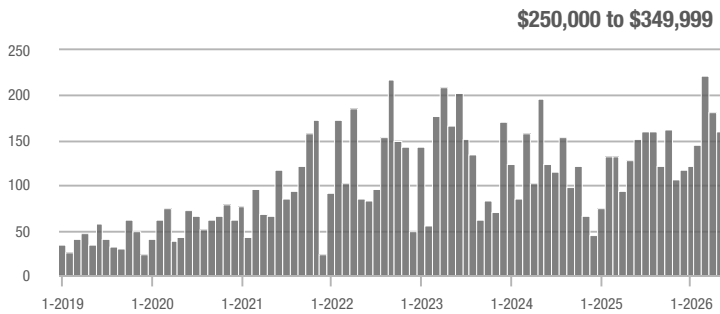
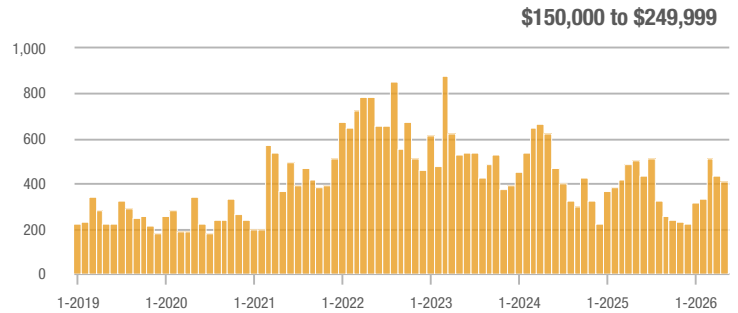
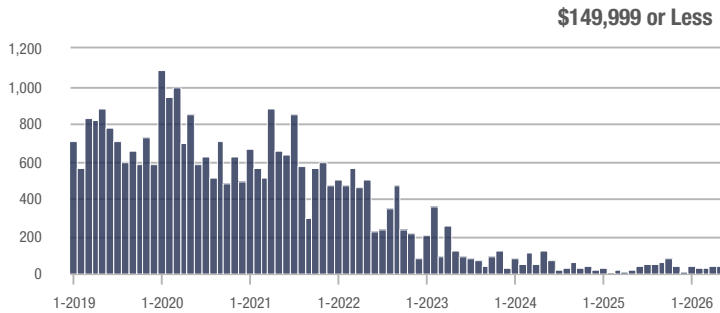
### Buyer Interest (Showings/Listings)



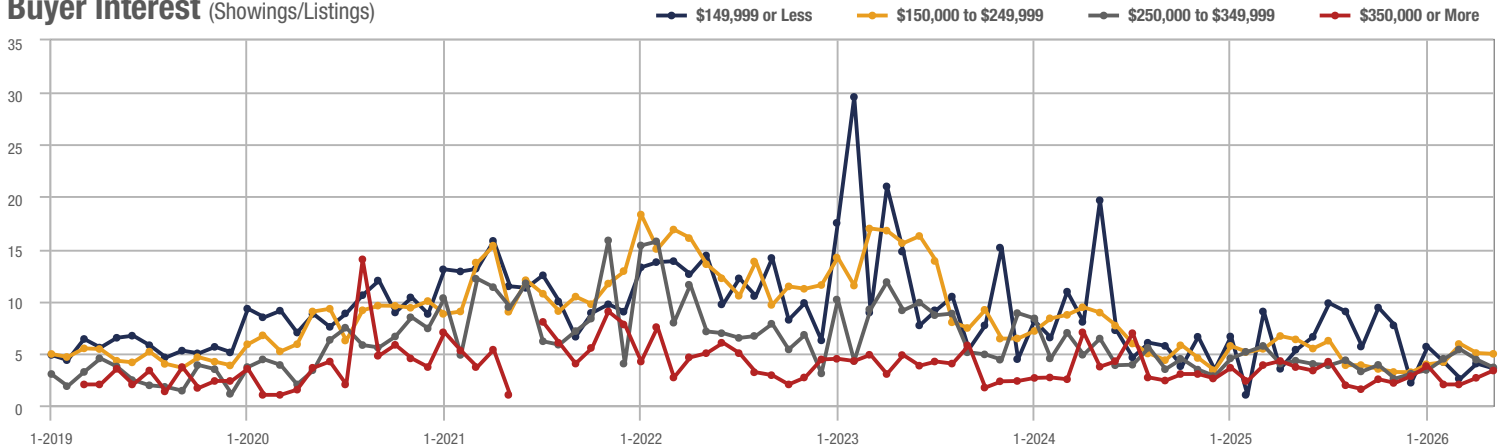
## Zip Code 28304

Price Range	Total Showings			Buyer Interest (Showings/Listings)			Managed Listings		
	May 2026	Year-Over-Year Change	Month-Over-Month Change	May 2026	Year-Over-Year Change	Month-Over-Month Change	May 2026	Year-Over-Year Change	Month-Over-Month Change
\$149,999 or Less	43	- 20.1%	- 4.4%	3.5	- 34.0%	- 11.4%	14	+ 180.0%	- 6.7%
\$150,000 to \$249,999	406	- 20.1%	- 7.5%	4.9	- 22.2%	- 1.5%	88	0.0%	- 6.4%
\$250,000 to \$349,999	161	+ 25.8%	- 11.5%	3.6	- 16.3%	- 17.1%	46	+ 15.0%	+ 4.5%
\$350,000 or More	62	+ 40.9%	+ 100.0%	3.3	- 10.8%	+ 26.4%	19	+ 35.7%	+ 58.3%
<b>Total</b>	<b>672</b>	<b>- 3.4%</b>	<b>- 3.6%</b>	<b>4.3</b>	<b>- 15.0%</b>	<b>- 4.7%</b>	<b>167</b>	<b>+ 13.6%</b>	<b>+ 1.2%</b>

### Showings



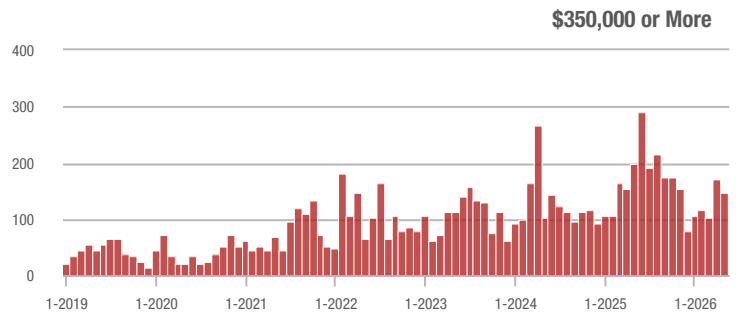
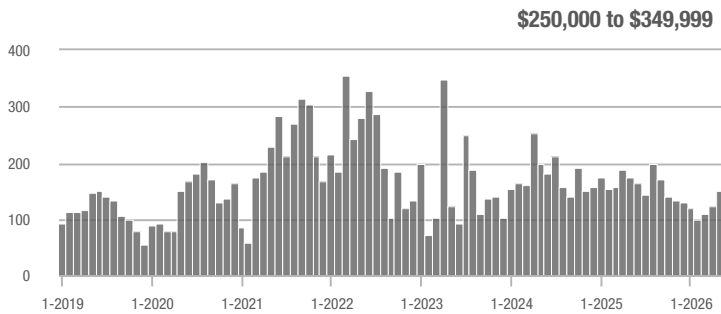
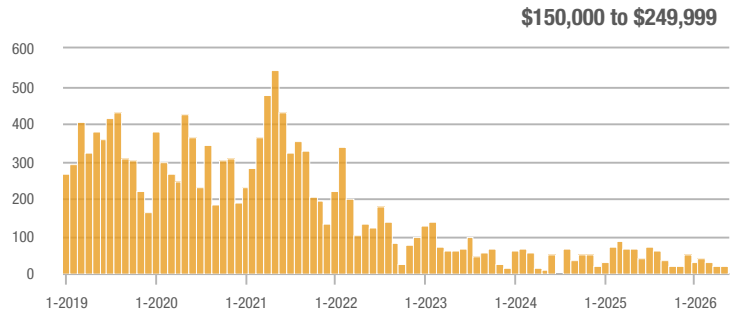
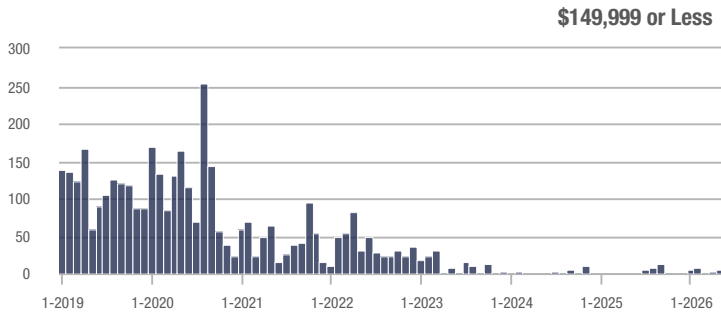
### Buyer Interest (Showings/Listings)



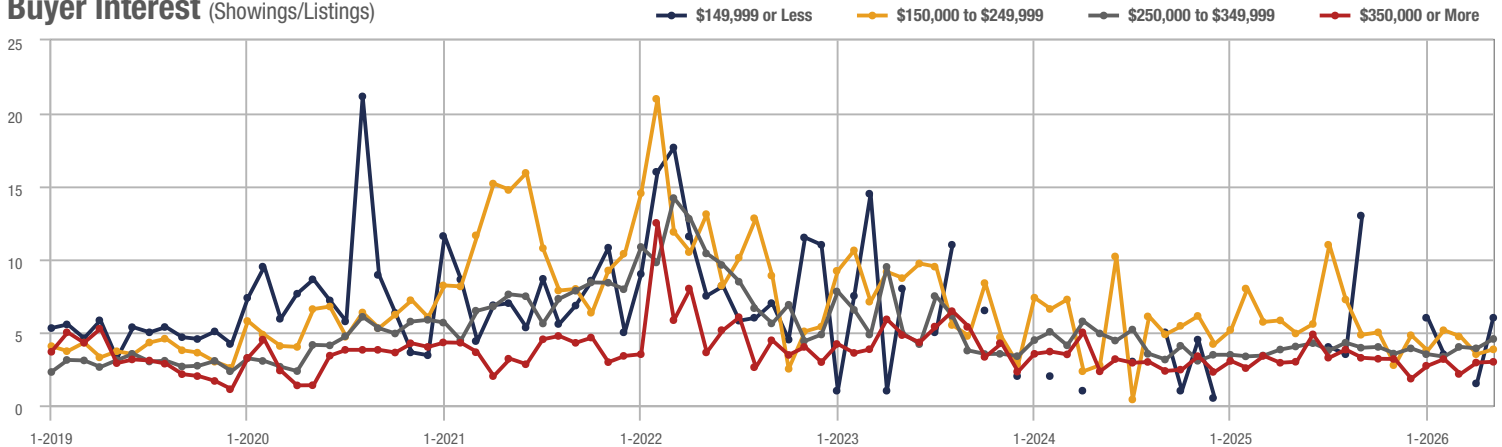
# Zip Code 27332

Price Range	Total Showings			Buyer Interest (Showings/Listings)			Managed Listings		
	May 2026	Year-Over-Year Change	Month-Over-Month Change	May 2026	Year-Over-Year Change	Month-Over-Month Change	May 2026	Year-Over-Year Change	Month-Over-Month Change
\$149,999 or Less	6	—	+ 100.0%	6.0	—	+ 300.0%	1	—	- 50.0%
\$150,000 to \$249,999	23	- 64.6%	+ 9.5%	3.8	- 22.4%	+ 9.5%	6	- 60.0%	0.0%
\$250,000 to \$349,999	152	- 12.6%	+ 23.6%	4.5	+ 12.5%	+ 16.5%	36	- 33.3%	+ 9.1%
\$350,000 or More	148	- 25.3%	- 12.9%	3.0	0.0%	+ 1.7%	52	- 31.6%	- 16.1%
<b>Total</b>	<b>329</b>	<b>- 24.7%</b>	<b>+ 3.8%</b>	<b>3.7</b>	<b>+ 14.9%</b>	<b>+ 12.5%</b>	<b>95</b>	<b>- 34.5%</b>	<b>- 7.8%</b>

## Showings



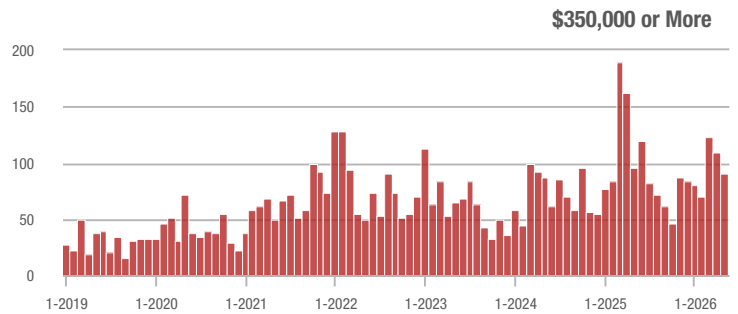
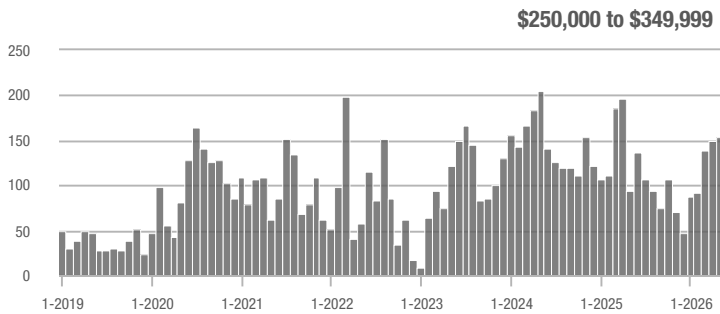
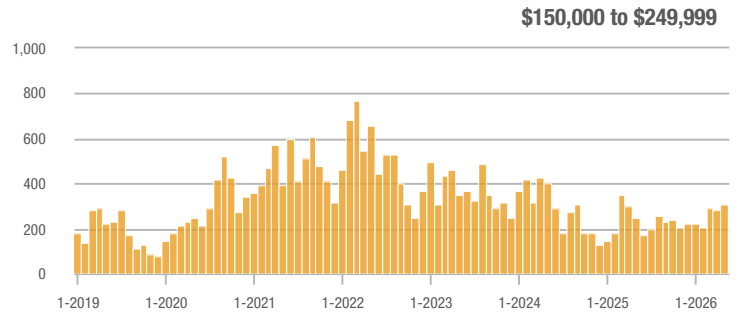
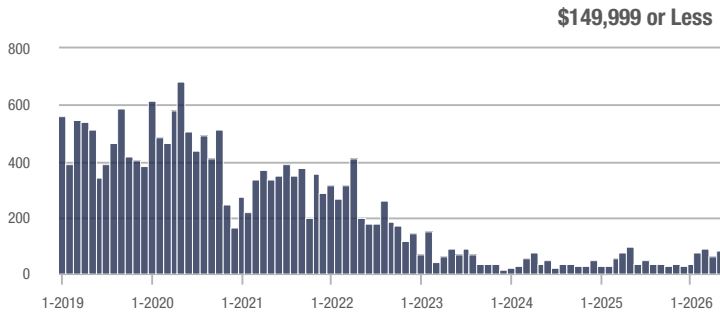
## Buyer Interest (Showings/Listings)



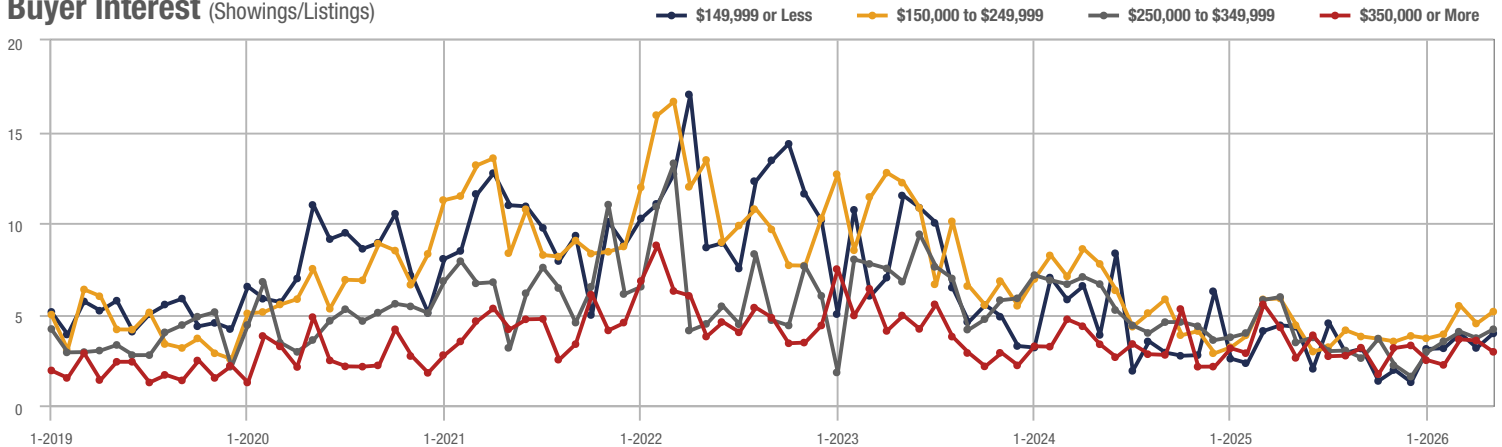
## Zip Code 28303

Price Range	Total Showings			Buyer Interest (Showings/Listings)			Managed Listings		
	May 2026	Year-Over-Year Change	Month-Over-Month Change	May 2026	Year-Over-Year Change	Month-Over-Month Change	May 2026	Year-Over-Year Change	Month-Over-Month Change
\$149,999 or Less	84	+ 22.0%	+ 31.3%	3.9	- 9.3%	+ 25.4%	20	- 4.8%	+ 11.1%
\$150,000 to \$249,999	305	+ 22.0%	+ 7.4%	5.1	+ 15.9%	+ 14.5%	64	+ 12.3%	- 5.9%
\$250,000 to \$349,999	154	+ 63.8%	+ 2.7%	4.2	+ 23.5%	+ 13.1%	40	+ 17.6%	- 9.1%
\$350,000 or More	90	- 5.3%	- 17.4%	2.9	+ 11.5%	- 17.5%	31	- 18.4%	- 8.8%
<b>Total</b>	<b>633</b>	<b>+ 18.1%</b>	<b>+ 4.3%</b>	<b>4.3</b>	<b>+ 14.3%</b>	<b>+ 10.3%</b>	<b>155</b>	<b>+ 3.3%</b>	<b>- 5.5%</b>

### Showings



### Buyer Interest (Showings/Listings)

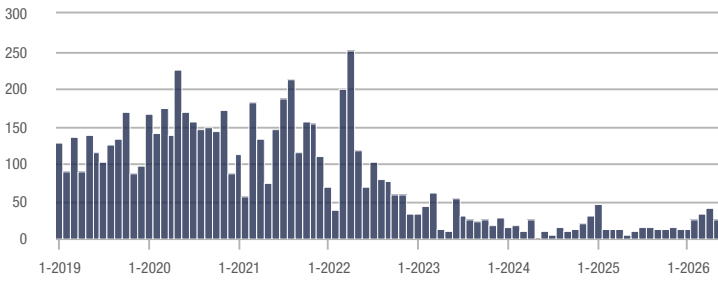


## Spring Lake

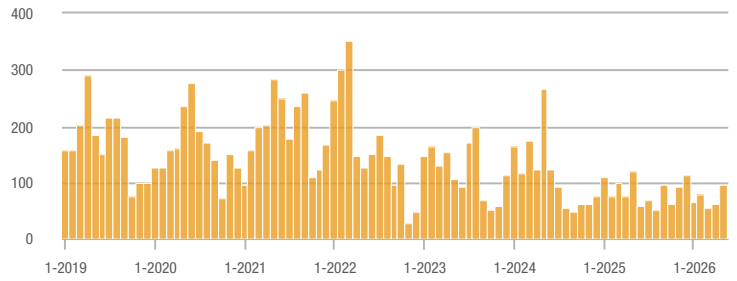
Price Range	Total Showings			Buyer Interest (Showings/Listings)			Managed Listings		
	May 2026	Year-Over-Year Change	Month-Over-Month Change	May 2026	Year-Over-Year Change	Month-Over-Month Change	May 2026	Year-Over-Year Change	Month-Over-Month Change
\$149,999 or Less	25	- 20.7%	- 40.5%	4.0	+ 60.0%	- 13.5%	5	+ 150.0%	- 44.4%
\$150,000 to \$249,999	96	- 20.7%	+ 60.0%	3.7	- 53.2%	+ 18.3%	26	+ 62.5%	+ 30.0%
\$250,000 to \$349,999	104	- 11.1%	+ 9.5%	2.4	+ 4.3%	+ 9.6%	54	- 12.9%	- 6.9%
\$350,000 or More	92	- 3.2%	- 17.1%	1.7	- 29.2%	- 8.2%	62	+ 37.8%	0.0%
<b>Total</b>	<b>317</b>	<b>- 6.2%</b>	<b>+ 2.9%</b>	<b>2.5</b>	<b>- 20.2%</b>	<b>+ 4.3%</b>	<b>147</b>	<b>+ 17.6%</b>	<b>- 1.3%</b>

### Showings

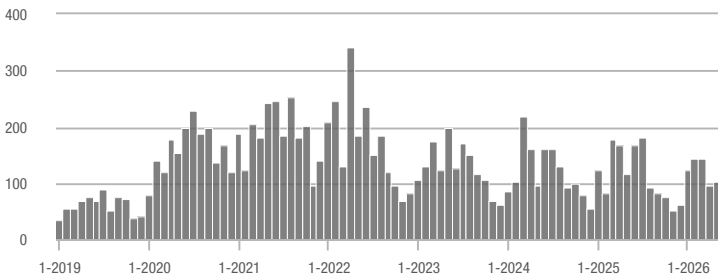
\$149,999 or Less



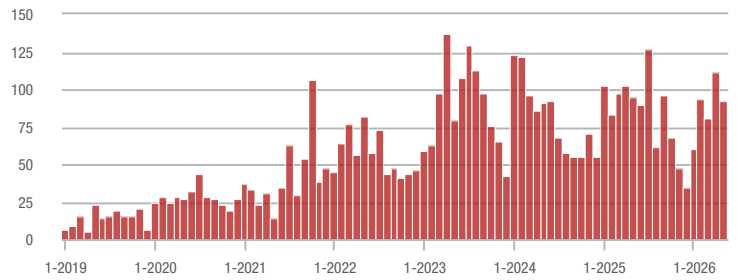
\$150,000 to \$249,999



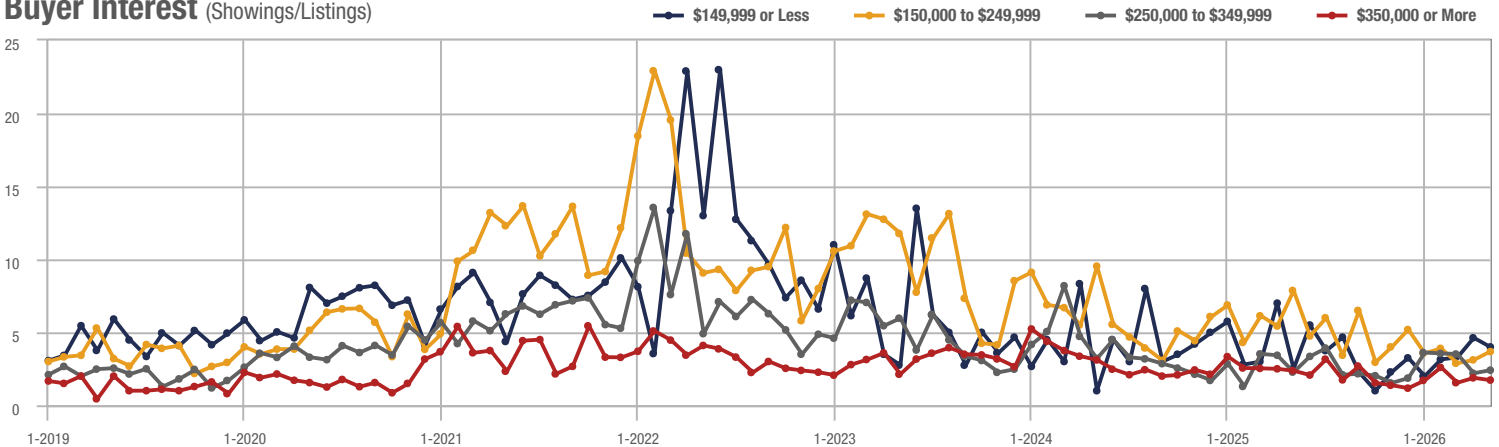
\$250,000 to \$349,999



\$350,000 or More



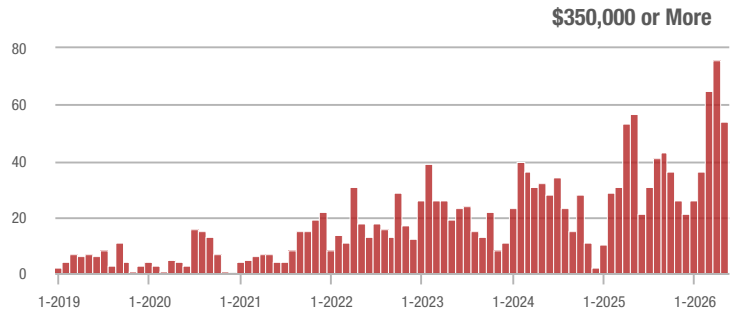
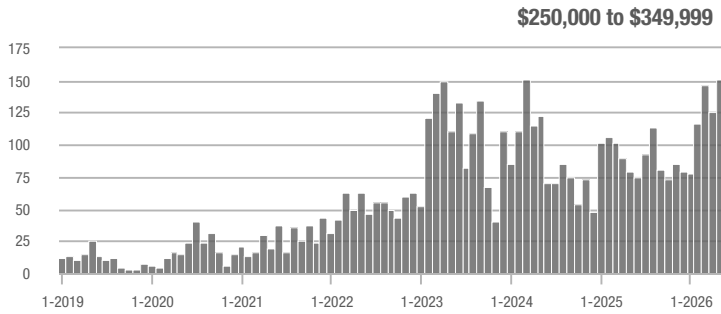
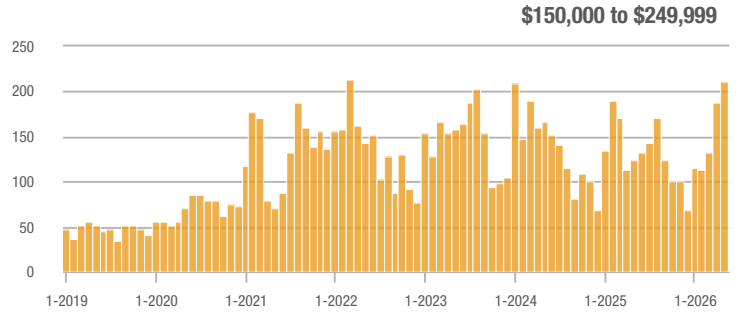
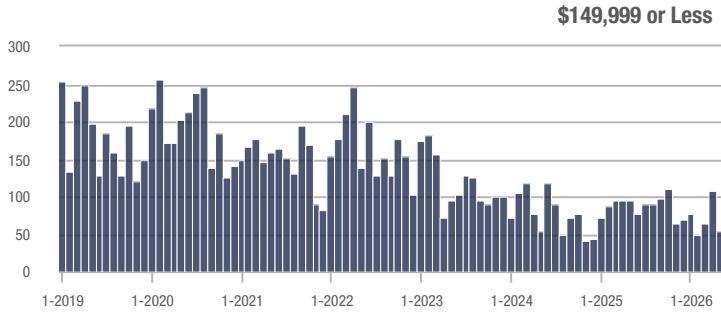
### Buyer Interest (Showings/Listings)



# Robeson County

Price Range	Total Showings			Buyer Interest (Showings/Listings)			Managed Listings		
	May 2026	Year-Over-Year Change	Month-Over-Month Change	May 2026	Year-Over-Year Change	Month-Over-Month Change	May 2026	Year-Over-Year Change	Month-Over-Month Change
\$149,999 or Less	55	+ 71.0%	- 48.6%	1.7	- 29.2%	- 44.3%	38	- 20.8%	- 15.6%
\$150,000 to \$249,999	212	+ 71.0%	+ 12.2%	2.6	+ 23.8%	- 0.1%	88	+ 11.4%	+ 1.1%
\$250,000 to \$349,999	151	+ 88.8%	+ 20.8%	2.6	+ 62.5%	+ 25.6%	64	- 5.9%	+ 1.6%
\$350,000 or More	54	- 5.3%	- 28.9%	1.6	- 23.8%	- 43.0%	33	- 5.7%	+ 6.5%
<b>Total</b>	<b>472</b>	<b>+ 32.2%</b>	<b>- 5.0%</b>	<b>2.3</b>	<b>+ 36.4%</b>	<b>- 3.8%</b>	<b>223</b>	<b>- 3.0%</b>	<b>- 1.3%</b>

## Showings



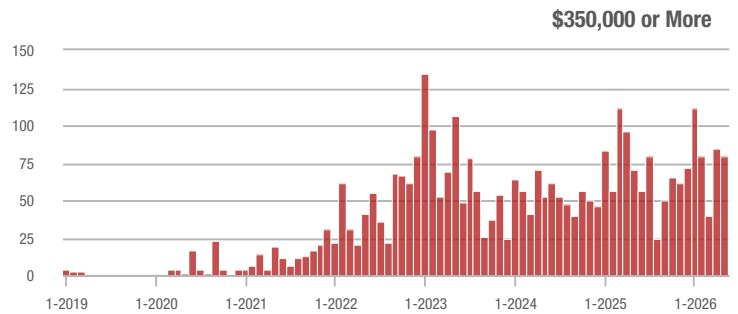
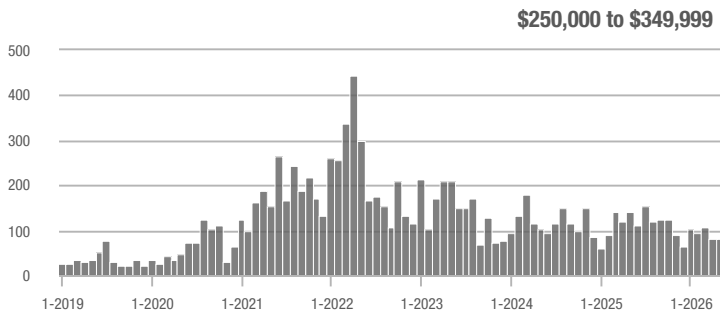
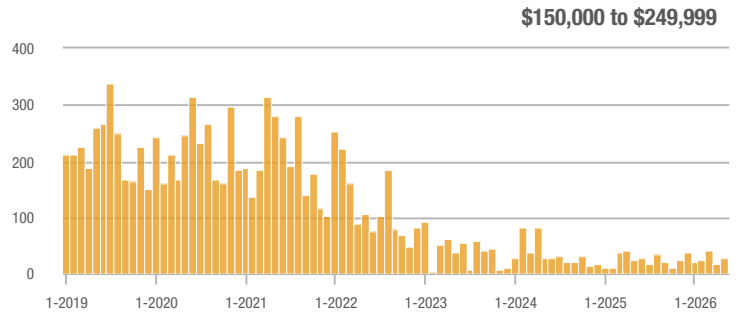
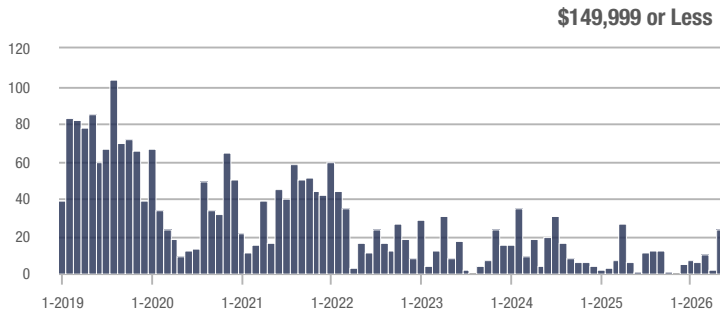
## Buyer Interest (Showings/Listings)



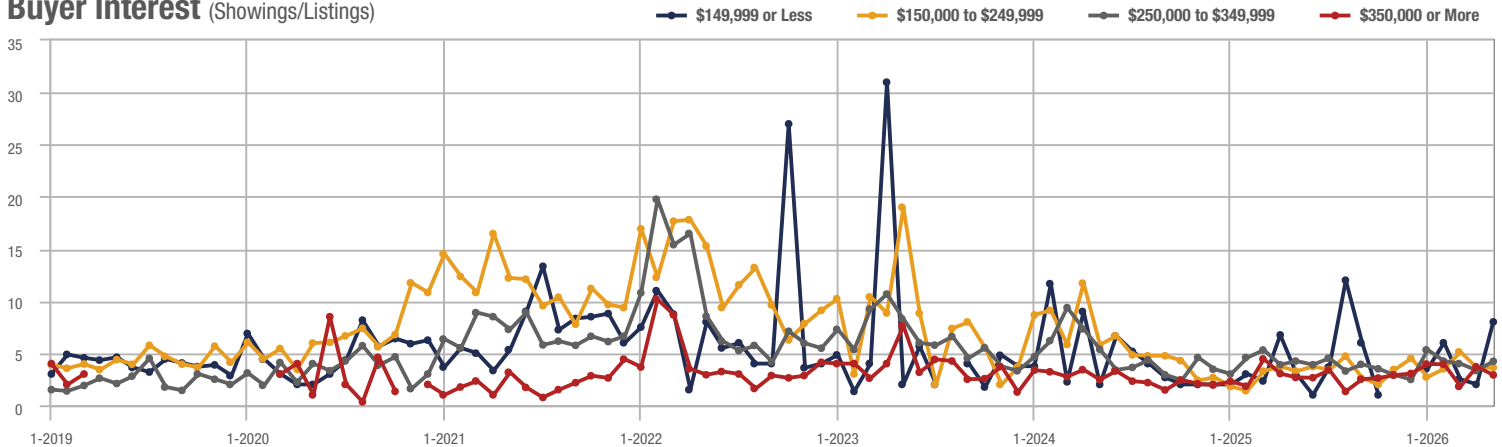
## Cameron

Price Range	Total Showings			Buyer Interest (Showings/Listings)			Managed Listings		
	May 2026	Year-Over-Year Change	Month-Over-Month Change	May 2026	Year-Over-Year Change	Month-Over-Month Change	May 2026	Year-Over-Year Change	Month-Over-Month Change
\$149,999 or Less	24	+ 20.8%	+ 1,100.0%	8.0	+ 166.7%	+ 300.0%	3	+ 50.0%	+ 200.0%
\$150,000 to \$249,999	29	+ 20.8%	+ 61.1%	3.6	+ 9.1%	+ 0.7%	8	0.0%	+ 60.0%
\$250,000 to \$349,999	82	- 41.8%	+ 1.2%	4.2	0.0%	+ 26.7%	21	- 47.5%	- 19.2%
\$350,000 or More	80	+ 12.7%	- 4.8%	2.9	+ 7.4%	- 21.3%	31	- 6.1%	+ 3.3%
<b>Total</b>	<b>215</b>	<b>- 11.2%</b>	<b>+ 16.2%</b>	<b>3.8</b>	<b>+ 17.0%</b>	<b>+ 14.4%</b>	<b>63</b>	<b>- 24.1%</b>	<b>+ 1.6%</b>

### Showings



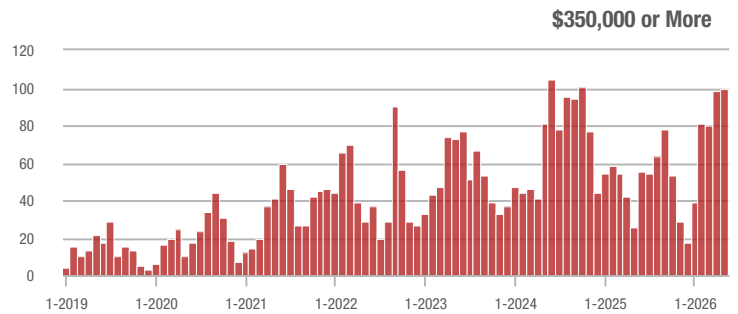
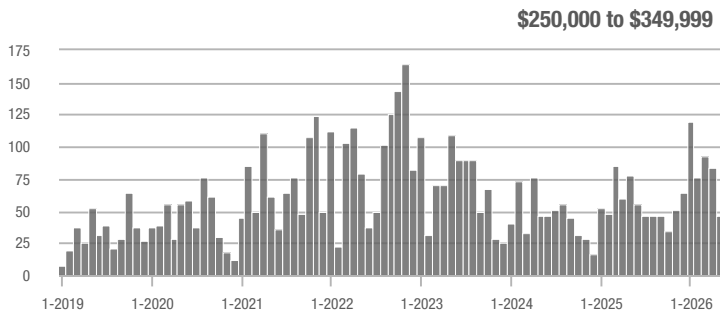
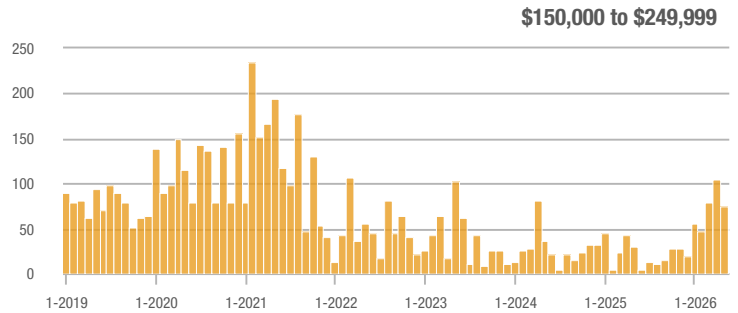
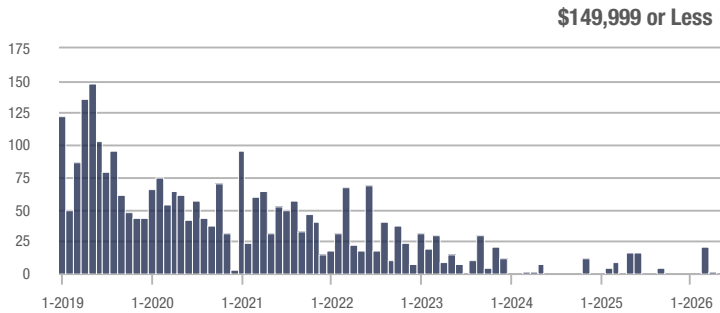
### Buyer Interest (Showings/Listings)



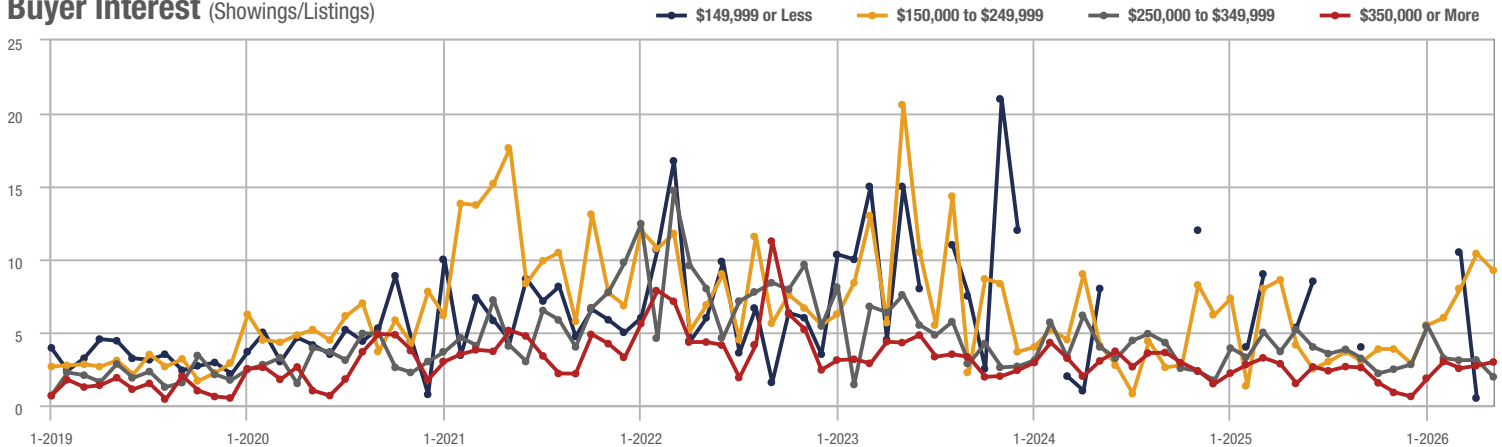
## Zip Code 27330

Price Range	Total Showings			Buyer Interest (Showings/Listings)			Managed Listings		
	May 2026	Year-Over-Year Change	Month-Over-Month Change	May 2026	Year-Over-Year Change	Month-Over-Month Change	May 2026	Year-Over-Year Change	Month-Over-Month Change
\$149,999 or Less	0	—	—	—	—	—	0	—	—
\$150,000 to \$249,999	74	+ 155.2%	- 28.8%	9.3	+ 126.8%	- 11.1%	8	+ 14.3%	- 20.0%
\$250,000 to \$349,999	47	- 39.7%	- 44.0%	2.0	- 61.5%	- 37.2%	37	+ 131.3%	- 2.6%
\$350,000 or More	100	+ 284.6%	+ 2.0%	3.0	+ 100.0%	+ 9.1%	41	+ 64.0%	- 6.8%
<b>Total</b>	<b>221</b>	<b>+ 48.3%</b>	<b>- 23.0%</b>	<b>3.5</b>	<b>- 12.0%</b>	<b>- 15.8%</b>	<b>86</b>	<b>+ 68.6%</b>	<b>- 8.5%</b>

### Showings



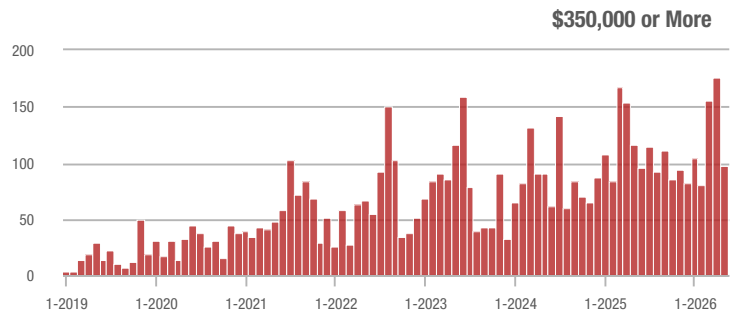
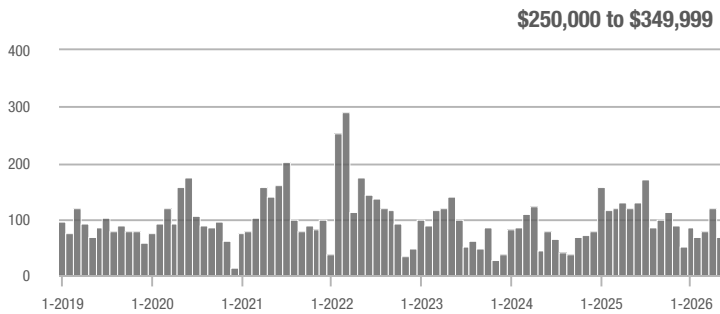
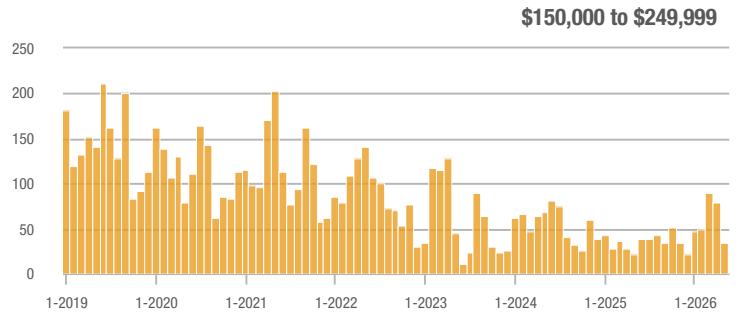
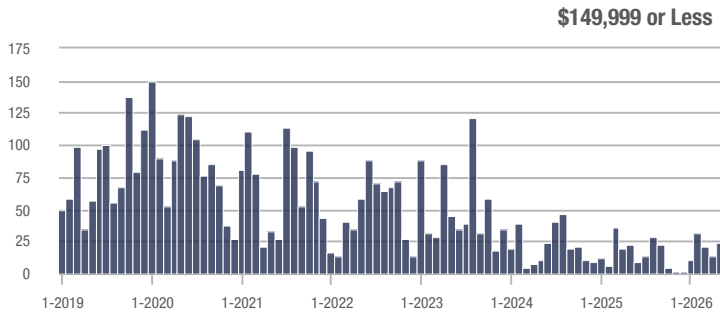
### Buyer Interest (Showings/Listings)



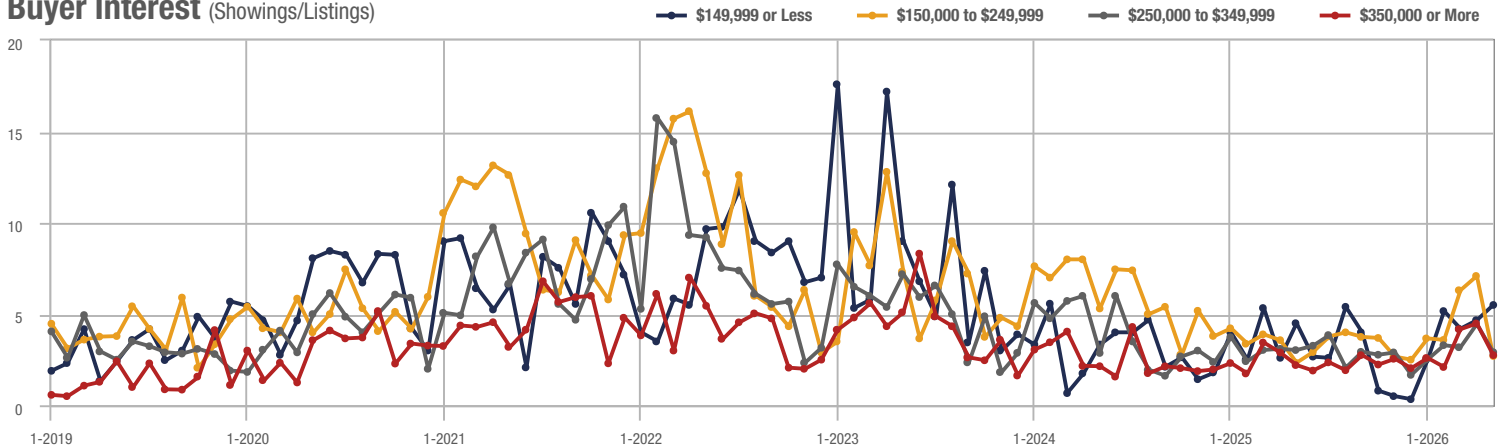
## Zip Code 28312

Price Range	Total Showings			Buyer Interest (Showings/Listings)			Managed Listings		
	May 2026	Year-Over-Year Change	Month-Over-Month Change	May 2026	Year-Over-Year Change	Month-Over-Month Change	May 2026	Year-Over-Year Change	Month-Over-Month Change
\$149,999 or Less	24	+ 54.5%	+ 71.4%	5.5	+ 22.2%	+ 17.9%	5	- 16.7%	+ 25.0%
\$150,000 to \$249,999	34	+ 54.5%	- 57.5%	2.7	+ 17.4%	- 61.9%	13	+ 18.2%	- 7.1%
\$250,000 to \$349,999	70	- 41.7%	- 42.1%	2.9	- 3.3%	- 34.7%	25	- 56.1%	- 7.4%
\$350,000 or More	98	- 16.2%	- 44.3%	2.8	+ 27.3%	- 38.7%	39	- 43.5%	- 13.3%
<b>Total</b>	<b>226</b>	<b>- 19.9%</b>	<b>- 42.2%</b>	<b>3.0</b>	<b>+ 39.8%</b>	<b>- 36.6%</b>	<b>82</b>	<b>- 42.7%</b>	<b>- 8.9%</b>

### Showings



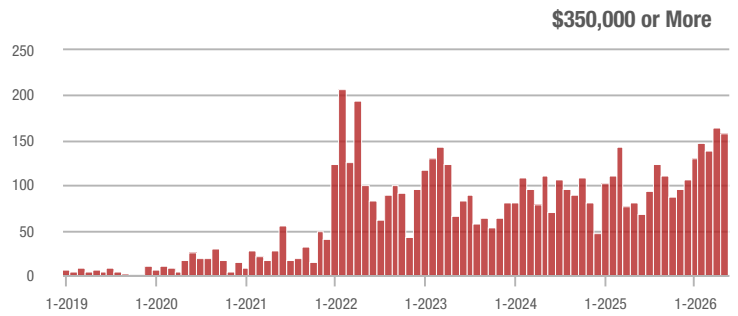
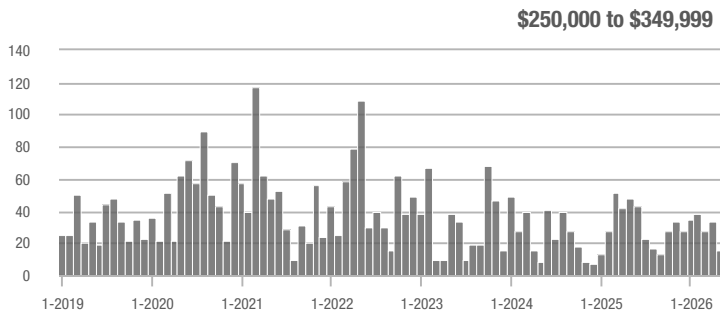
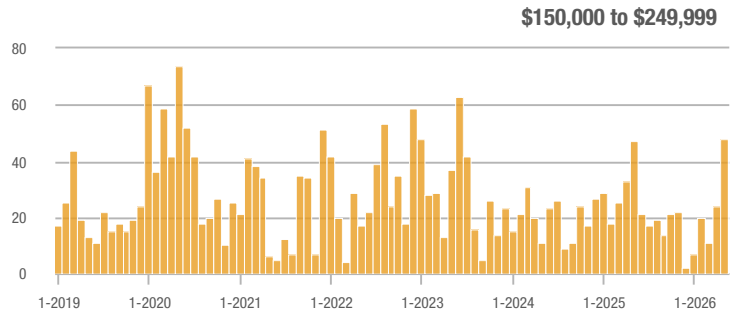
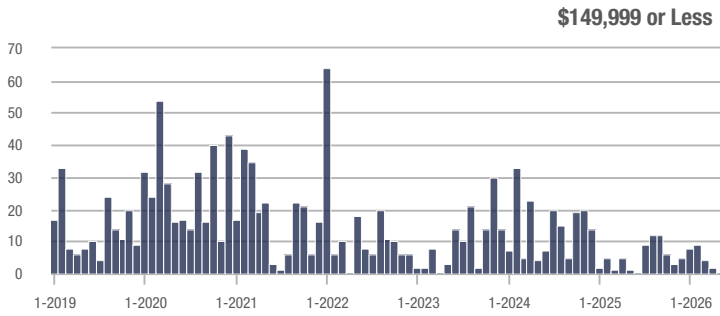
### Buyer Interest (Showings/Listings)



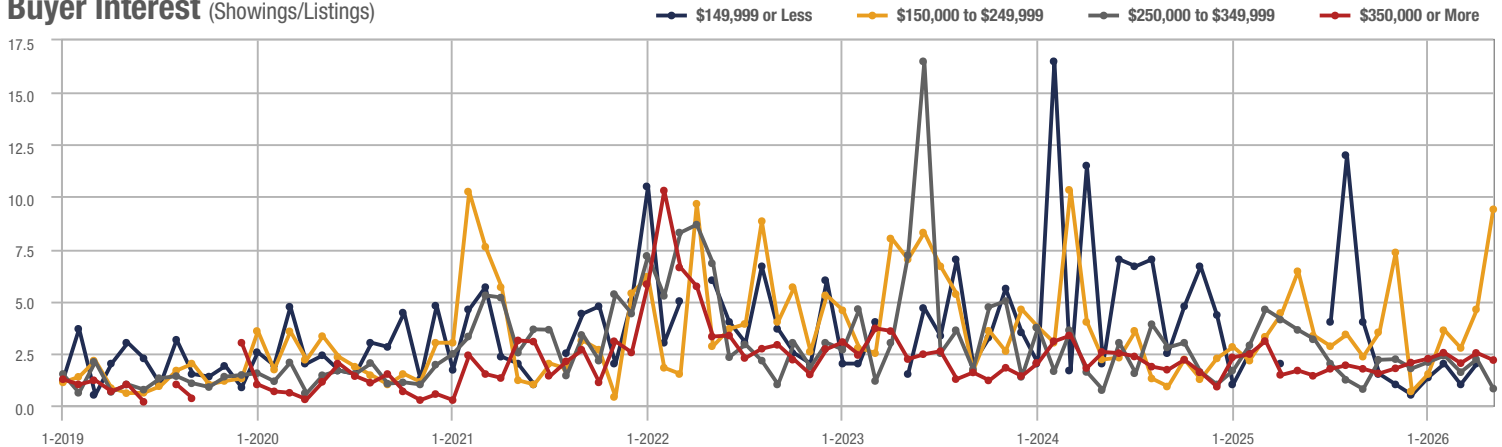
## Moore County

Price Range	Total Showings			Buyer Interest (Showings/Listings)			Managed Listings		
	May 2026	Year-Over-Year Change	Month-Over-Month Change	May 2026	Year-Over-Year Change	Month-Over-Month Change	May 2026	Year-Over-Year Change	Month-Over-Month Change
\$149,999 or Less	0	—	—	—	—	—	0	—	—
\$150,000 to \$249,999	48	+ 2.1%	+ 100.0%	9.4	+ 46.9%	+ 104.3%	8	0.0%	0.0%
\$250,000 to \$349,999	16	- 66.7%	- 52.9%	0.8	- 77.8%	- 63.9%	21	+ 5.0%	- 19.2%
\$350,000 or More	159	+ 96.3%	- 3.6%	2.2	+ 29.4%	- 13.6%	91	+ 23.0%	0.0%
<b>Total</b>	<b>223</b>	<b>+ 26.0%</b>	<b>- 0.9%</b>	<b>2.5</b>	<b>+ 8.1%</b>	<b>+ 4.1%</b>	<b>120</b>	<b>+ 16.5%</b>	<b>- 4.8%</b>

### Showings



### Buyer Interest (Showings/Listings)

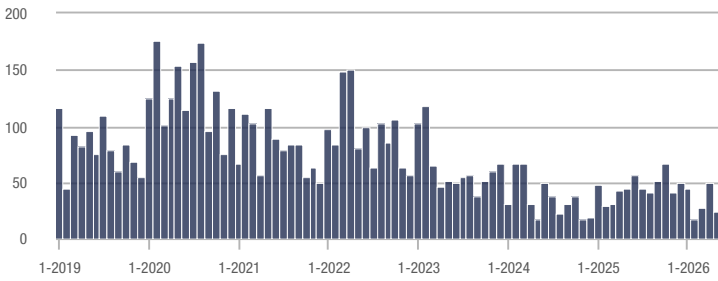


## Lumberton

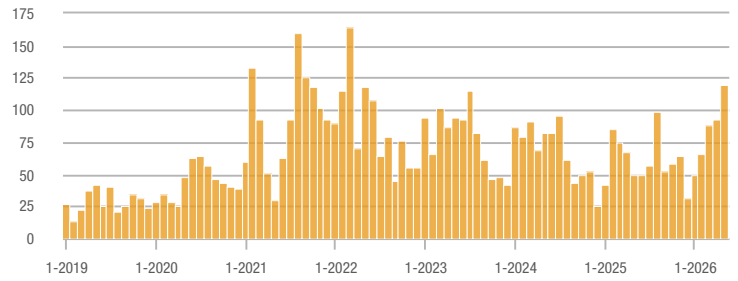
Price Range	Total Showings			Buyer Interest (Showings/Listings)			Managed Listings		
	May 2026	Year-Over-Year Change	Month-Over-Month Change	May 2026	Year-Over-Year Change	Month-Over-Month Change	May 2026	Year-Over-Year Change	Month-Over-Month Change
\$149,999 or Less	24	+ 140.0%	- 52.0%	1.3	- 43.5%	- 53.7%	17	- 19.0%	- 15.0%
\$150,000 to \$249,999	120	+ 140.0%	+ 30.4%	3.1	+ 29.2%	+ 21.7%	43	+ 53.6%	0.0%
\$250,000 to \$349,999	69	+ 86.5%	+ 76.9%	3.1	+ 34.8%	+ 32.3%	26	+ 36.8%	+ 23.8%
\$350,000 or More	30	+ 20.0%	- 25.0%	1.2	+ 9.1%	- 42.5%	22	- 12.0%	+ 4.8%
<b>Total</b>	<b>243</b>	<b>+ 54.8%</b>	<b>+ 10.0%</b>	<b>2.4</b>	<b>+ 33.3%</b>	<b>+ 6.9%</b>	<b>108</b>	<b>+ 16.1%</b>	<b>+ 2.9%</b>

### Showings

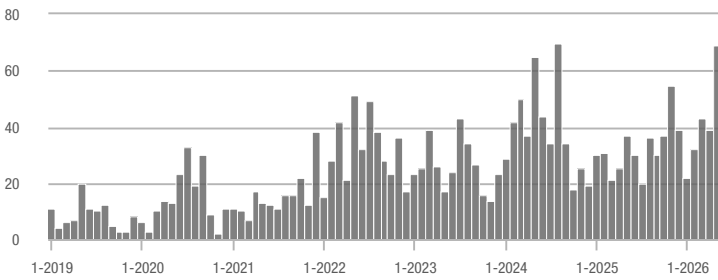
\$149,999 or Less



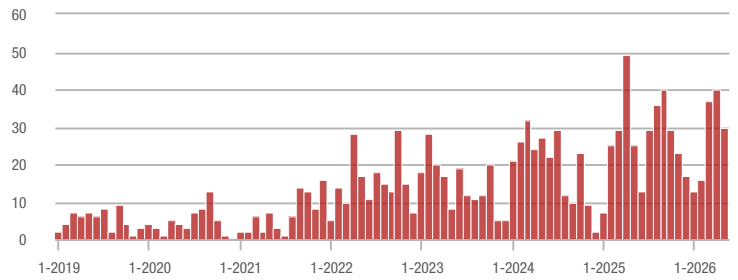
\$150,000 to \$249,999



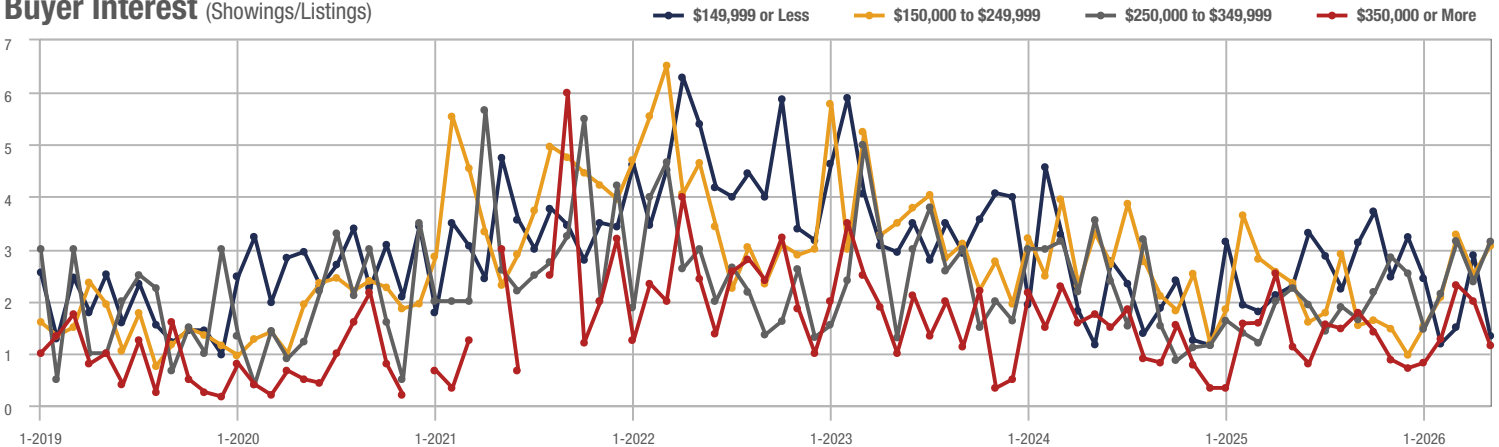
\$250,000 to \$349,999



\$350,000 or More



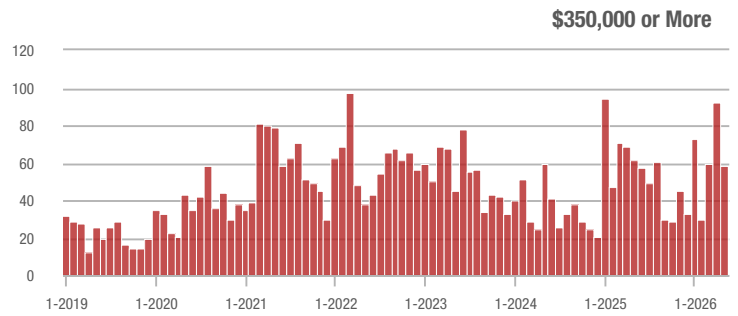
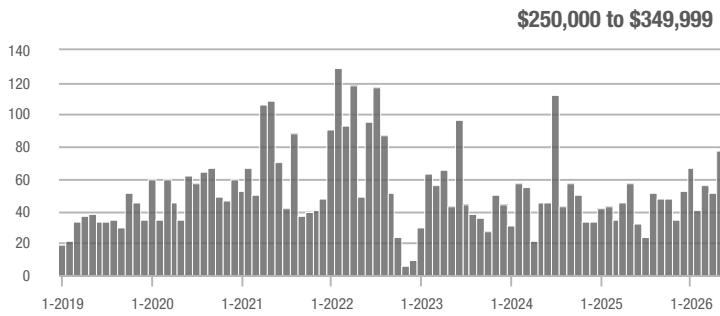
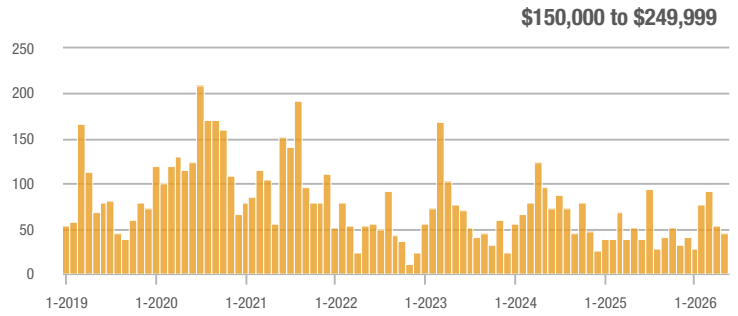
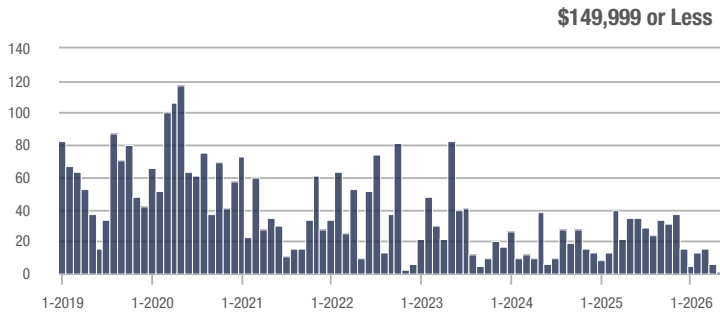
### Buyer Interest (Showings/Listings)



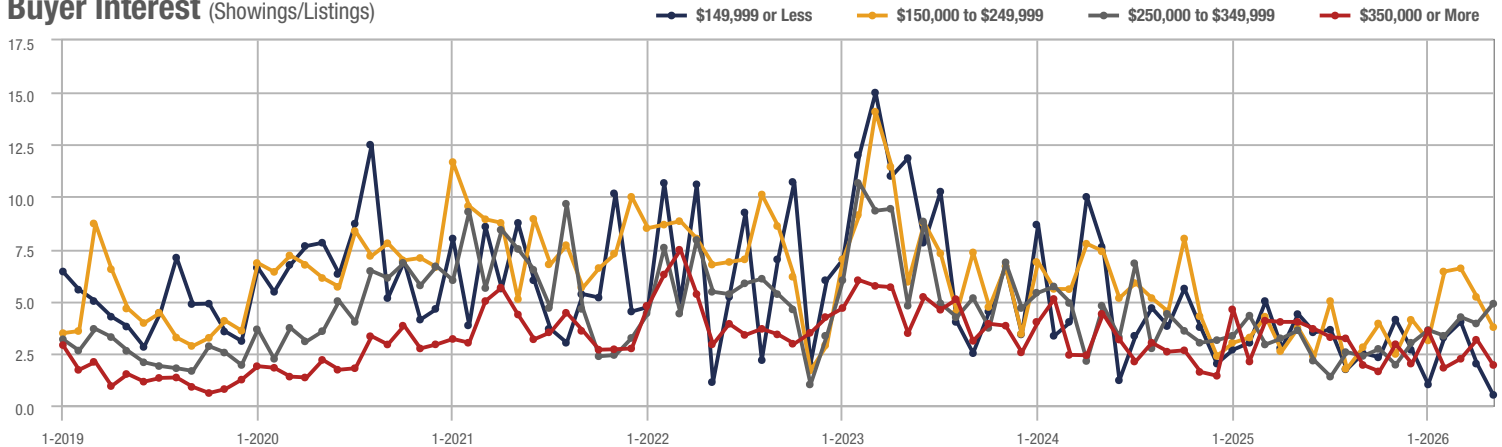
# Zip Code 28305

Price Range	Total Showings			Buyer Interest (Showings/Listings)			Managed Listings		
	May 2026	Year-Over-Year Change	Month-Over-Month Change	May 2026	Year-Over-Year Change	Month-Over-Month Change	May 2026	Year-Over-Year Change	Month-Over-Month Change
\$149,999 or Less	1	- 13.5%	- 83.3%	0.5	- 88.6%	- 75.0%	2	- 75.0%	- 33.3%
\$150,000 to \$249,999	45	- 13.5%	- 15.1%	3.8	+ 2.7%	- 27.9%	13	- 7.1%	+ 18.2%
\$250,000 to \$349,999	78	+ 34.5%	+ 52.9%	4.9	+ 36.1%	+ 24.3%	16	0.0%	+ 23.1%
\$350,000 or More	58	- 6.5%	- 37.0%	1.9	- 52.5%	- 38.5%	30	+ 76.5%	+ 3.4%
<b>Total</b>	<b>182</b>	<b>- 12.1%</b>	<b>- 9.9%</b>	<b>3.0</b>	<b>- 20.7%</b>	<b>- 17.3%</b>	<b>61</b>	<b>+ 10.9%</b>	<b>+ 8.9%</b>

## Showings



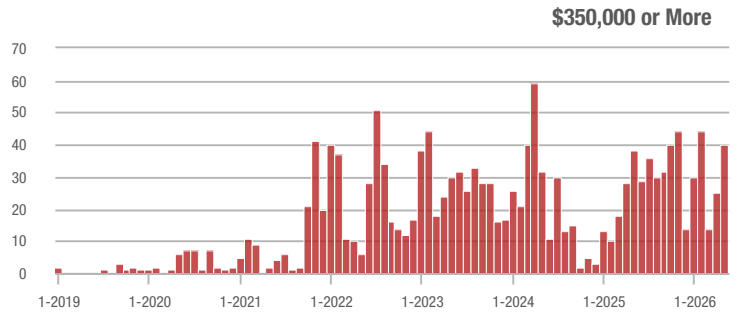
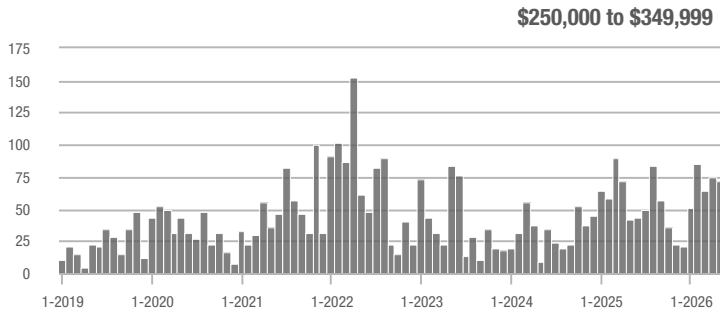
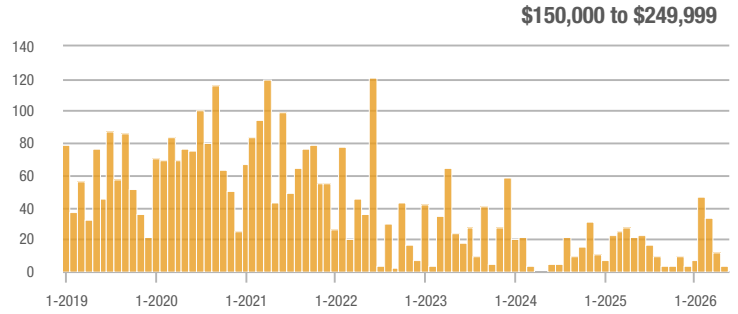
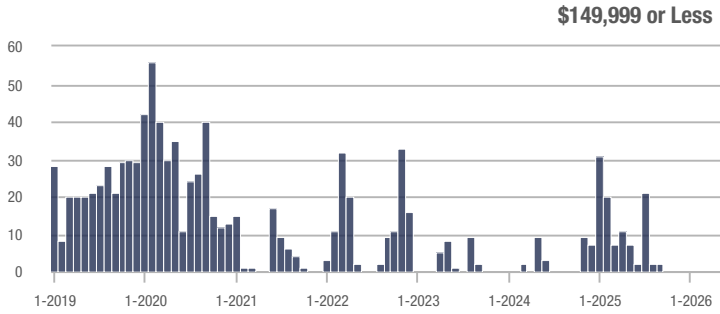
## Buyer Interest (Showings/Listings)



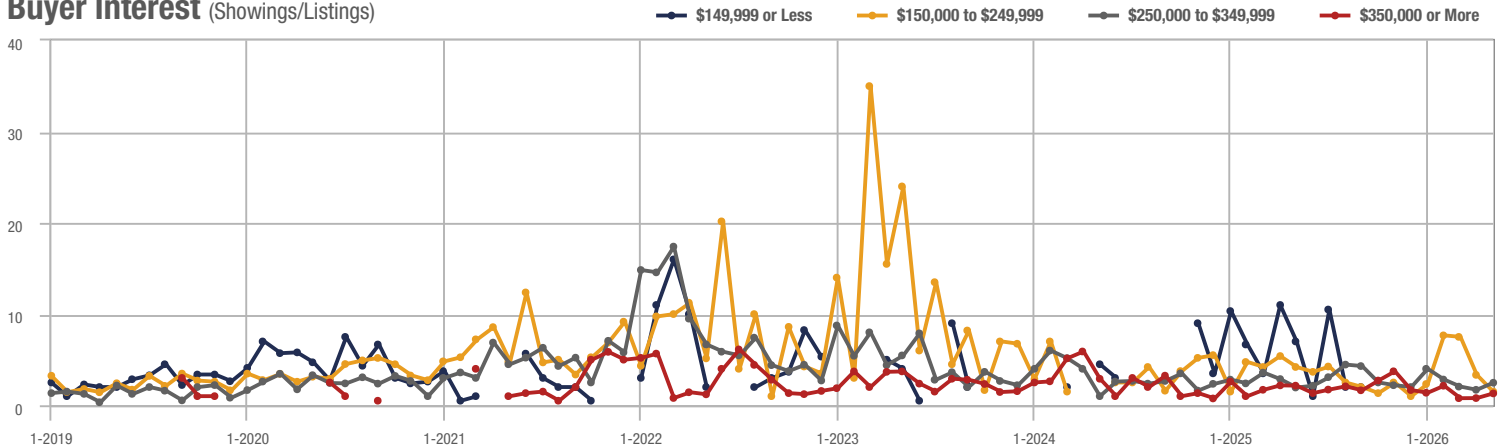
## Lillington

Price Range	Total Showings			Buyer Interest (Showings/Listings)			Managed Listings		
	May 2026	Year-Over-Year Change	Month-Over-Month Change	May 2026	Year-Over-Year Change	Month-Over-Month Change	May 2026	Year-Over-Year Change	Month-Over-Month Change
\$149,999 or Less	0	—	—	—	—	—	0	—	—
\$150,000 to \$249,999	4	- 81.0%	- 66.7%	1.5	- 64.3%	- 55.0%	3	- 50.0%	- 25.0%
\$250,000 to \$349,999	72	+ 71.4%	- 4.0%	2.5	+ 31.6%	+ 45.5%	46	+ 2.2%	- 13.2%
\$350,000 or More	40	+ 5.3%	+ 60.0%	1.3	- 40.9%	+ 64.7%	35	+ 34.6%	+ 2.9%
<b>Total</b>	<b>116</b>	<b>+ 7.4%</b>	<b>+ 3.6%</b>	<b>1.9</b>	<b>- 0.3%</b>	<b>+ 12.2%</b>	<b>84</b>	<b>+ 7.7%</b>	<b>- 7.7%</b>

### Showings



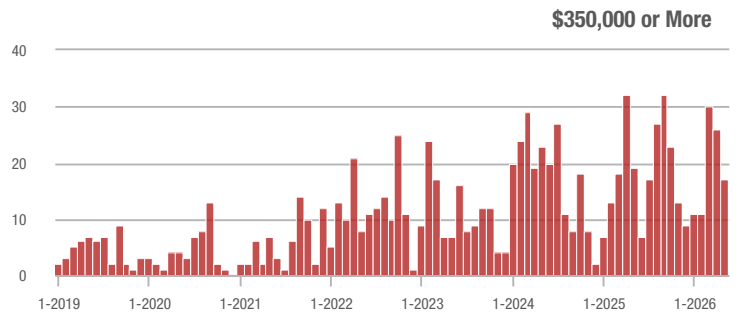
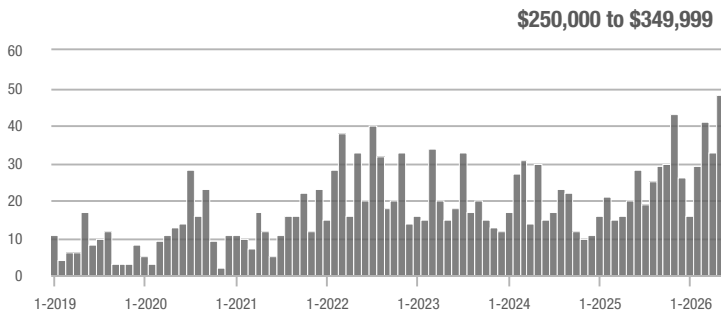
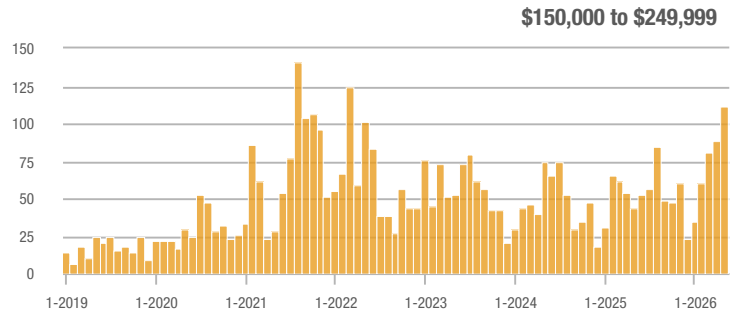
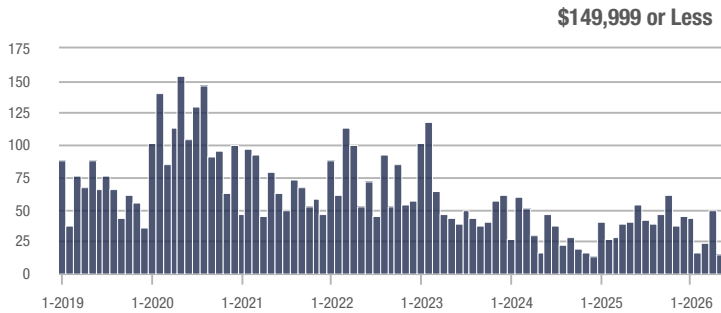
### Buyer Interest (Showings/Listings)



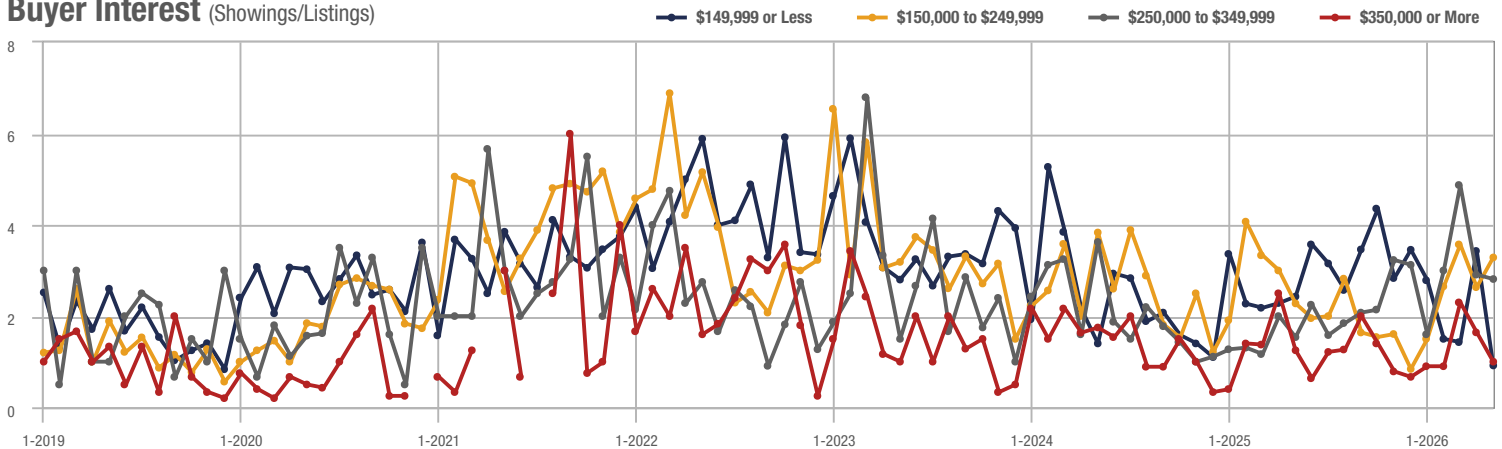
## Zip Code 28358

Price Range	Total Showings			Buyer Interest (Showings/Listings)			Managed Listings		
	May 2026	Year-Over-Year Change	Month-Over-Month Change	May 2026	Year-Over-Year Change	Month-Over-Month Change	May 2026	Year-Over-Year Change	Month-Over-Month Change
\$149,999 or Less	15	+ 152.3%	- 69.4%	0.9	- 62.5%	- 73.3%	14	- 22.2%	- 17.6%
\$150,000 to \$249,999	111	+ 152.3%	+ 26.1%	3.3	+ 43.5%	+ 24.8%	37	+ 54.2%	- 5.1%
\$250,000 to \$349,999	48	+ 140.0%	+ 45.5%	2.8	+ 86.7%	- 3.3%	21	+ 50.0%	+ 31.3%
\$350,000 or More	17	- 10.5%	- 34.6%	1.0	- 23.1%	- 39.1%	17	0.0%	+ 6.3%
<b>Total</b>	<b>191</b>	<b>+ 55.3%</b>	<b>- 2.6%</b>	<b>2.3</b>	<b>+ 27.4%</b>	<b>- 3.6%</b>	<b>89</b>	<b>+ 21.9%</b>	<b>+ 1.1%</b>

### Showings



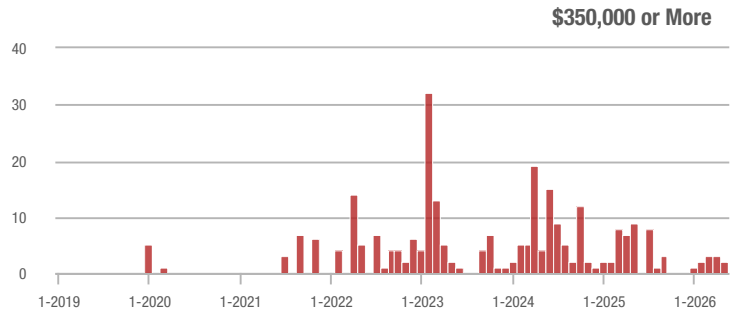
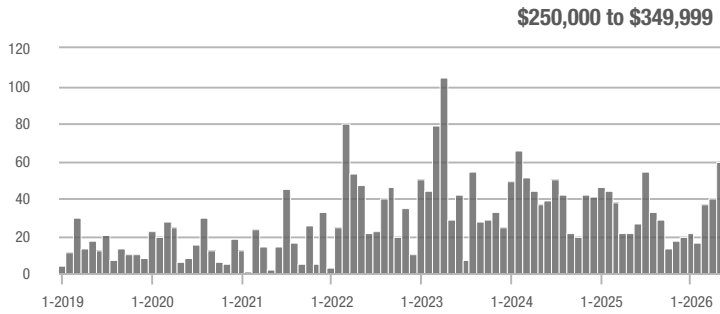
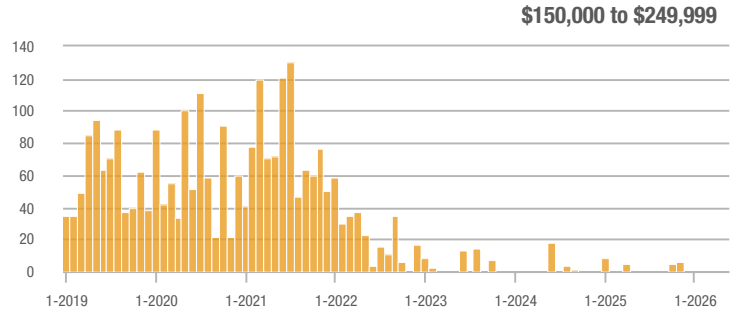
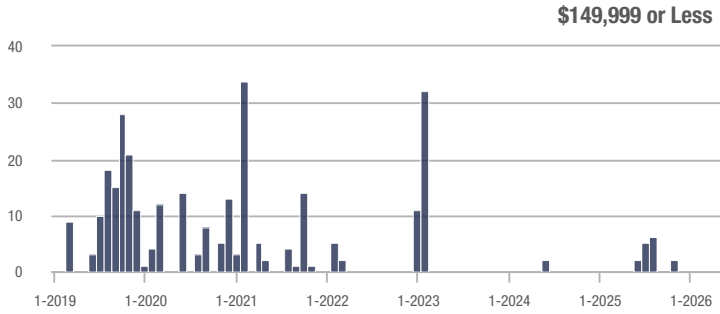
### Buyer Interest (Showings/Listings)



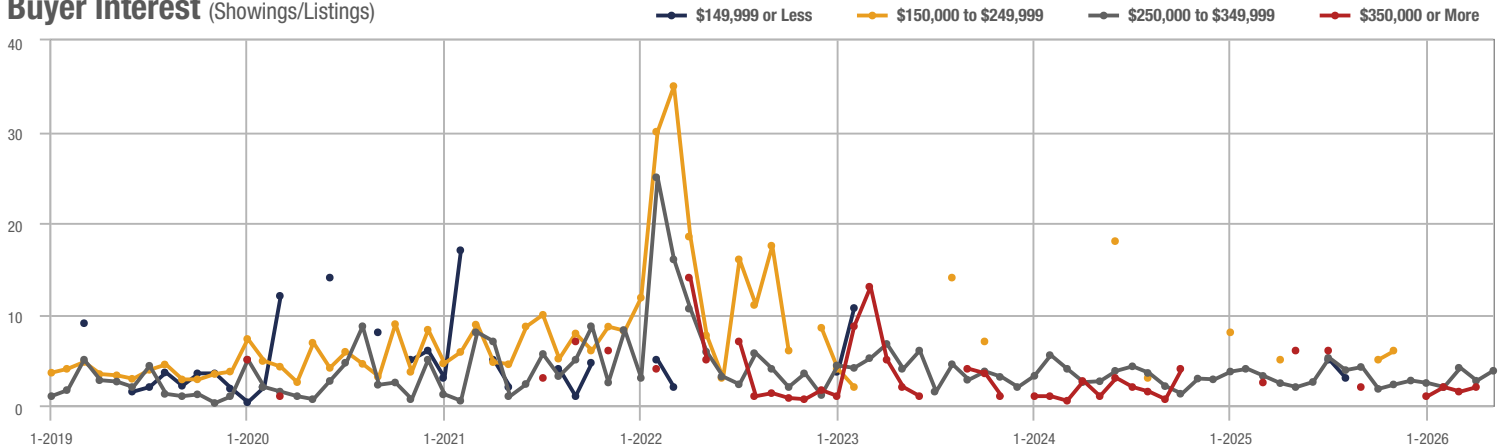
## Bunnlevel

Price Range	Total Showings			Buyer Interest (Showings/Listings)			Managed Listings		
	May 2026	Year-Over-Year Change	Month-Over-Month Change	May 2026	Year-Over-Year Change	Month-Over-Month Change	May 2026	Year-Over-Year Change	Month-Over-Month Change
\$149,999 or Less	0	—	—	—	—	—	0	—	—
\$150,000 to \$249,999	0	—	—	—	—	—	0	—	—
\$250,000 to \$349,999	59	+ 168.2%	+ 47.5%	3.8	+ 90.0%	+ 40.6%	19	+ 58.3%	+ 5.6%
\$350,000 or More	2	- 77.8%	- 33.3%	—	—	—	1	- 66.7%	- 50.0%
<b>Total</b>	<b>61</b>	<b>+ 96.8%</b>	<b>+ 41.9%</b>	<b>3.8</b>	<b>+ 57.4%</b>	<b>+ 41.9%</b>	<b>20</b>	<b>+ 25.0%</b>	<b>0.0%</b>

### Showings



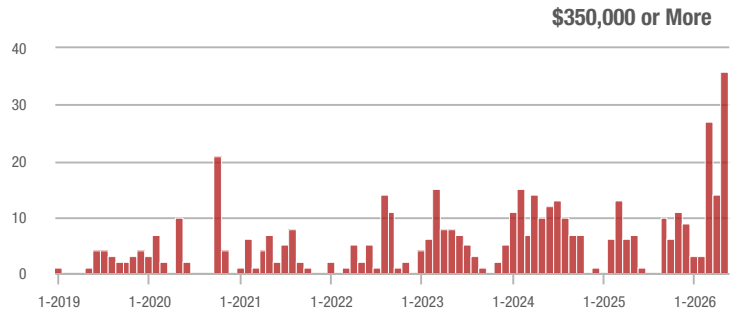
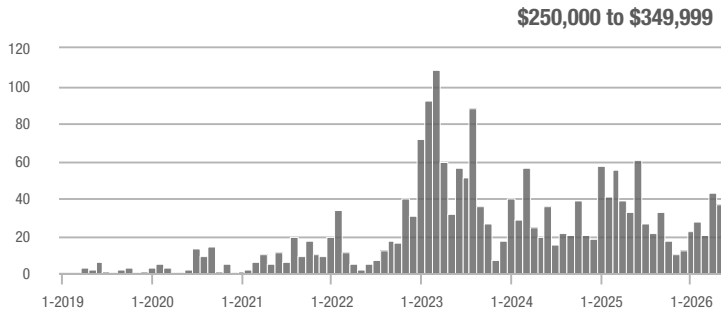
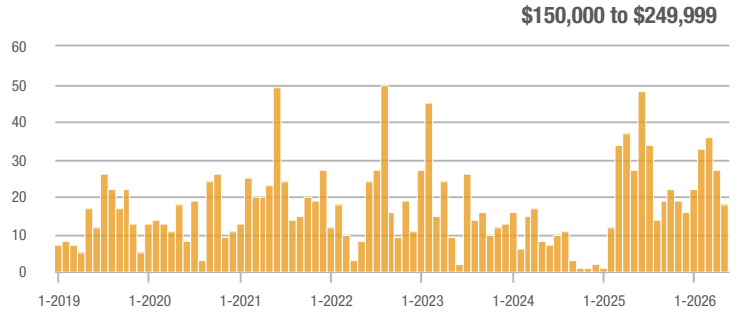
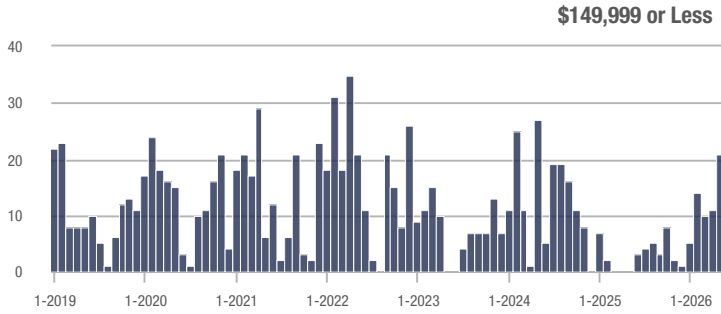
### Buyer Interest (Showings/Listings)



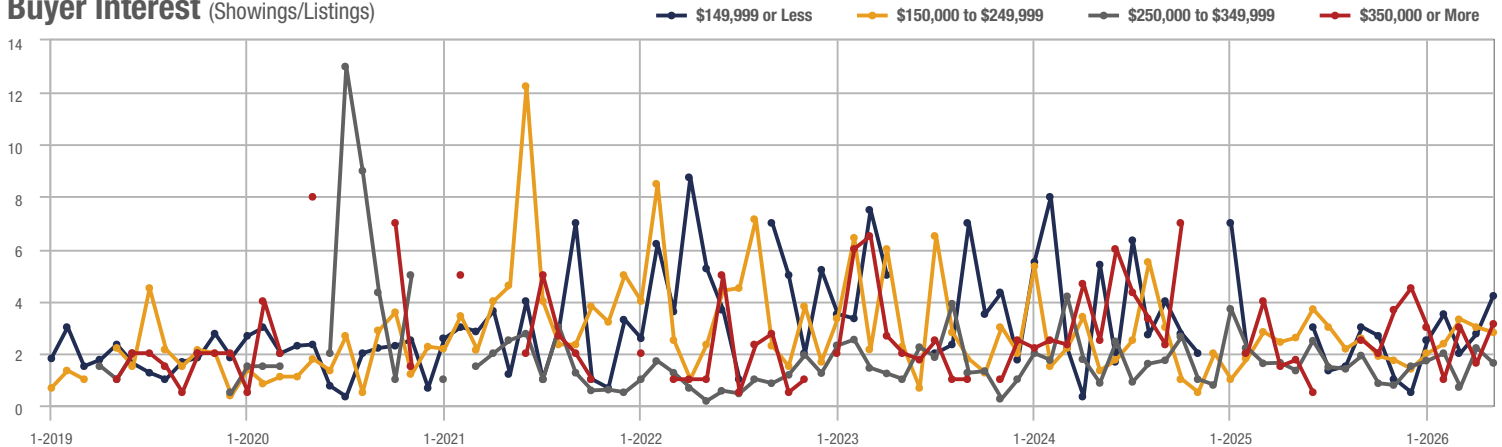
# Sampson County

Price Range	Total Showings			Buyer Interest (Showings/Listings)			Managed Listings		
	May 2026	Year-Over-Year Change	Month-Over-Month Change	May 2026	Year-Over-Year Change	Month-Over-Month Change	May 2026	Year-Over-Year Change	Month-Over-Month Change
\$149,999 or Less	21	—	+ 90.9%	4.2	—	+ 52.7%	5	—	+ 25.0%
\$150,000 to \$249,999	18	- 33.3%	- 33.3%	2.8	+ 7.7%	- 6.7%	10	- 16.7%	- 28.6%
\$250,000 to \$349,999	37	+ 12.1%	- 14.0%	1.6	+ 23.1%	- 26.1%	24	- 25.0%	+ 4.3%
\$350,000 or More	36	+ 414.3%	+ 157.1%	3.1	+ 72.2%	+ 92.3%	13	+ 225.0%	0.0%
<b>Total</b>	<b>112</b>	<b>+ 67.2%</b>	<b>+ 17.9%</b>	<b>2.5</b>	<b>+ 54.3%</b>	<b>+ 22.4%</b>	<b>52</b>	<b>+ 8.3%</b>	<b>- 3.7%</b>

## Showings



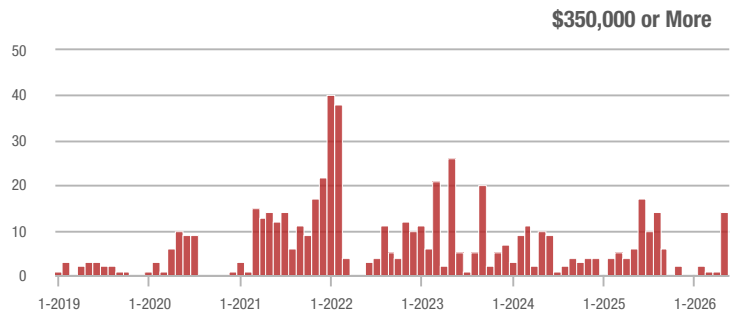
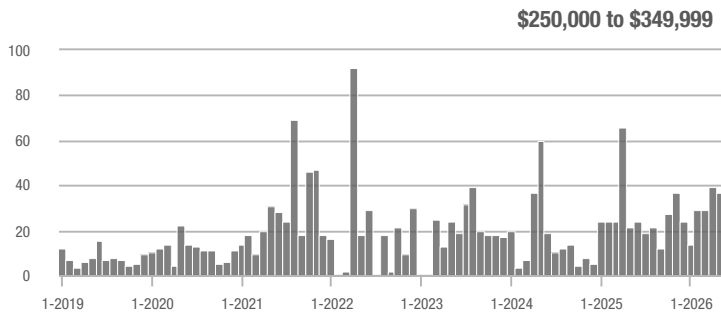
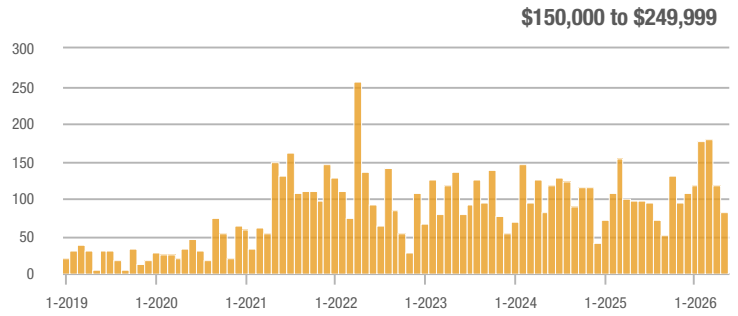
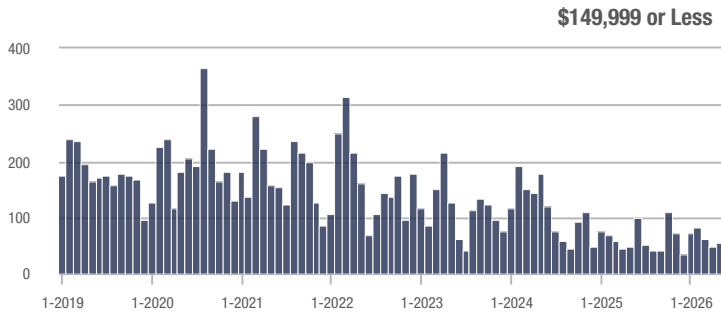
## Buyer Interest (Showings/Listings)



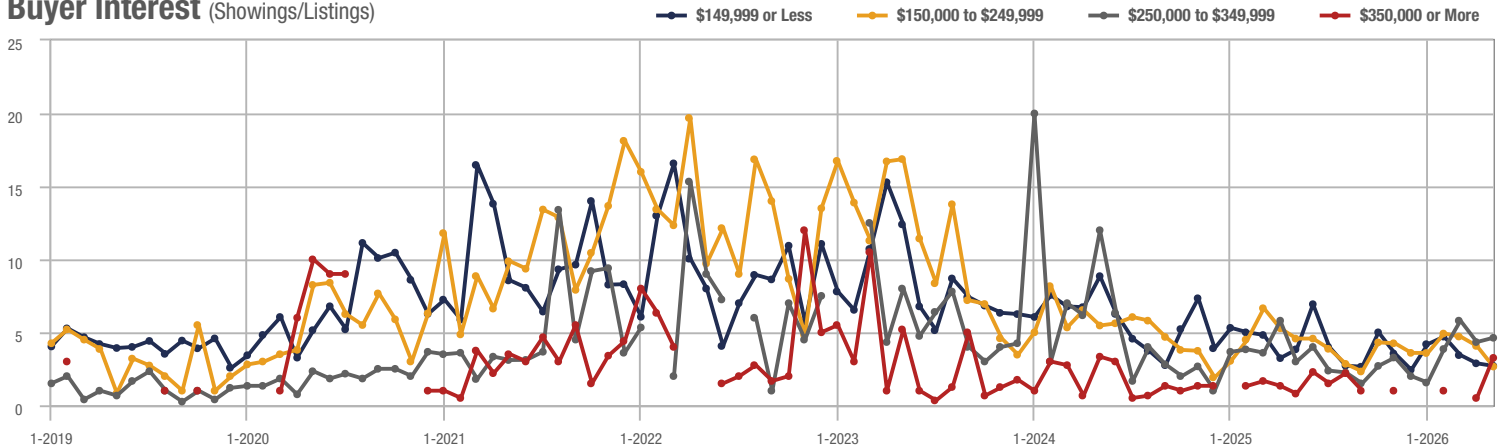
# Zip Code 28301

Price Range	Total Showings			Buyer Interest (Showings/Listings)			Managed Listings		
	May 2026	Year-Over-Year Change	Month-Over-Month Change	May 2026	Year-Over-Year Change	Month-Over-Month Change	May 2026	Year-Over-Year Change	Month-Over-Month Change
\$149,999 or Less	55	- 17.3%	+ 12.2%	2.7	- 28.9%	- 6.1%	21	+ 31.3%	+ 5.0%
\$150,000 to \$249,999	81	- 17.3%	- 31.9%	2.7	- 41.3%	- 34.7%	32	+ 23.1%	0.0%
\$250,000 to \$349,999	37	+ 76.2%	- 5.1%	4.6	+ 53.3%	+ 6.7%	8	0.0%	- 11.1%
\$350,000 or More	14	+ 133.3%	+ 1,300.0%	3.3	+ 312.5%	+ 550.0%	6	0.0%	+ 50.0%
<b>Total</b>	<b>187</b>	<b>+ 7.5%</b>	<b>- 10.1%</b>	<b>3.0</b>	<b>- 10.2%</b>	<b>- 12.8%</b>	<b>67</b>	<b>+ 19.6%</b>	<b>+ 3.1%</b>

## Showings



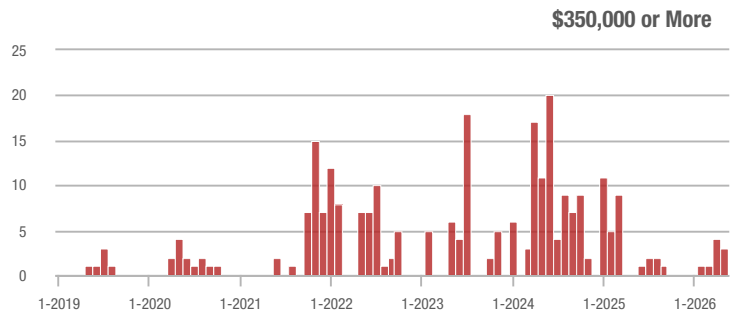
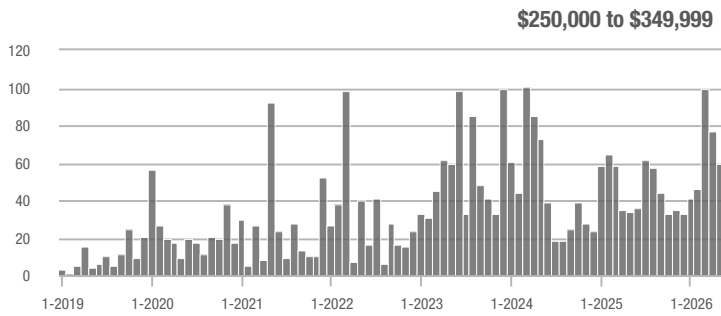
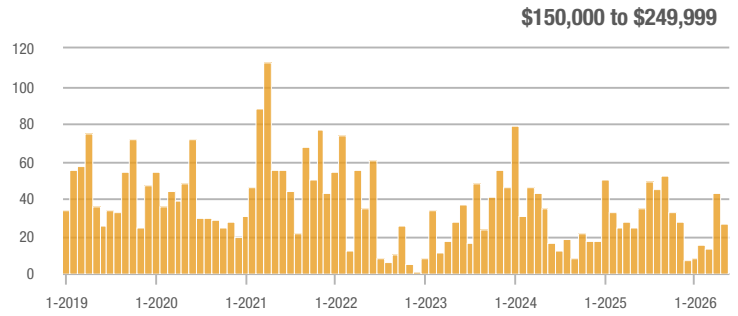
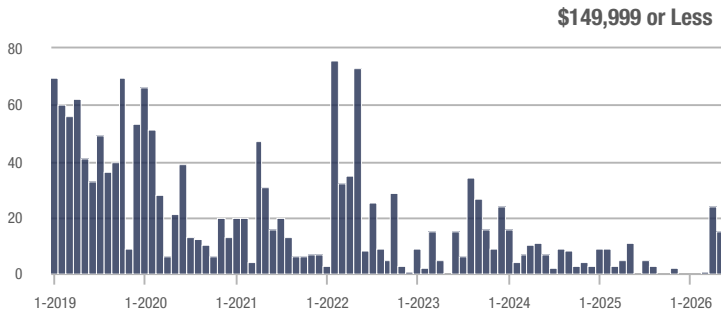
## Buyer Interest (Showings/Listings)



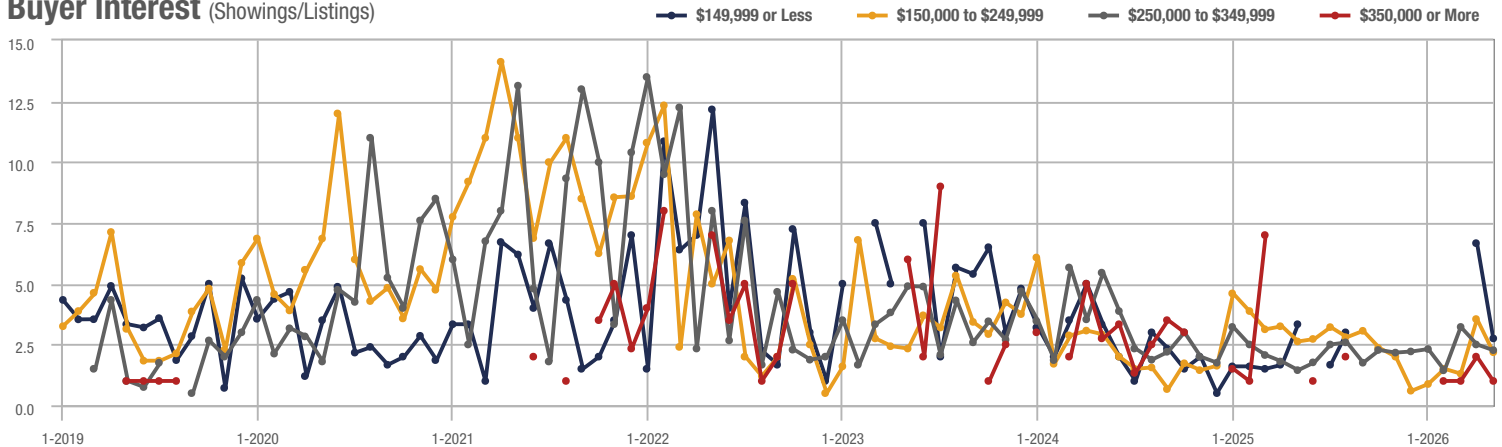
## Parkton

Price Range	Total Showings			Buyer Interest (Showings/Listings)			Managed Listings		
	May 2026	Year-Over-Year Change	Month-Over-Month Change	May 2026	Year-Over-Year Change	Month-Over-Month Change	May 2026	Year-Over-Year Change	Month-Over-Month Change
\$149,999 or Less	15	+ 8.0%	- 37.5%	2.8	- 15.2%	- 58.8%	5	+ 25.0%	+ 25.0%
\$150,000 to \$249,999	27	+ 8.0%	- 37.2%	2.2	- 15.4%	- 38.5%	14	+ 16.7%	0.0%
\$250,000 to \$349,999	60	+ 76.5%	- 22.1%	2.3	+ 64.3%	- 9.3%	21	- 36.4%	- 19.2%
\$350,000 or More	3	—	- 25.0%	1.0	—	- 50.0%	3	—	0.0%
<b>Total</b>	<b>105</b>	<b>+ 50.0%</b>	<b>- 29.1%</b>	<b>2.2</b>	<b>+ 70.9%</b>	<b>- 22.5%</b>	<b>43</b>	<b>- 12.2%</b>	<b>- 8.5%</b>

### Showings



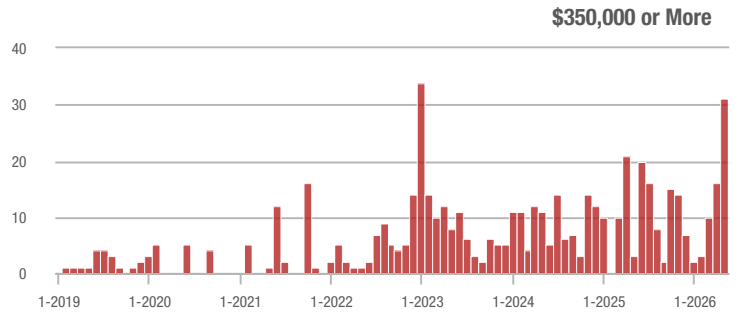
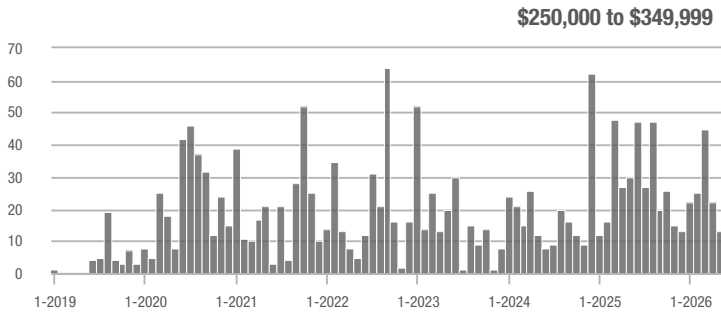
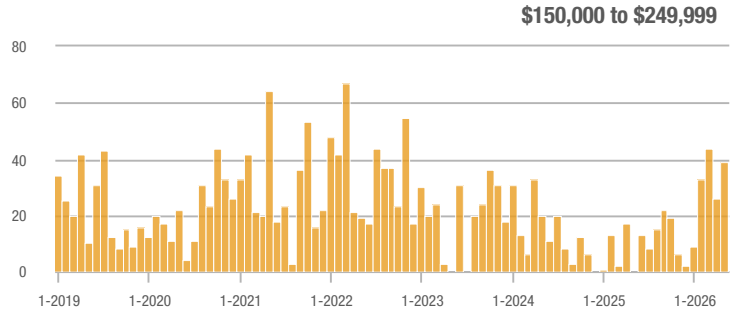
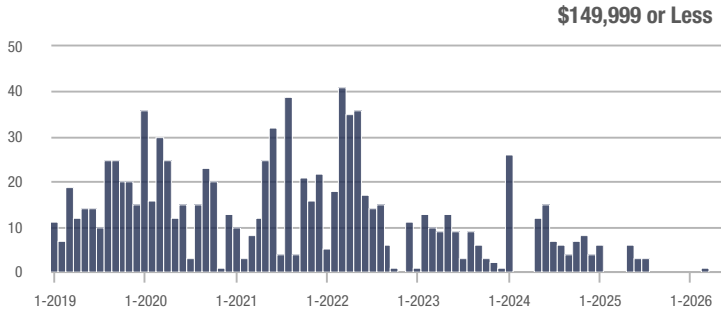
### Buyer Interest (Showings/Listings)



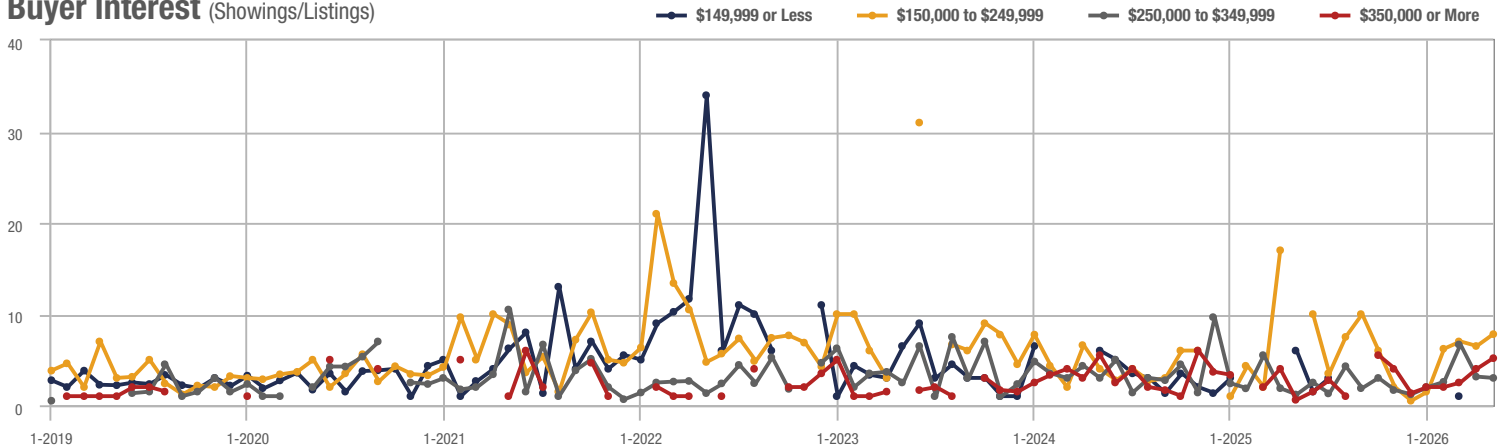
## Stedman

Price Range	Total Showings			Buyer Interest (Showings/Listings)			Managed Listings		
	May 2026	Year-Over-Year Change	Month-Over-Month Change	May 2026	Year-Over-Year Change	Month-Over-Month Change	May 2026	Year-Over-Year Change	Month-Over-Month Change
\$149,999 or Less	0	—	—	—	—	—	0	—	—
\$150,000 to \$249,999	39	—	+ 50.0%	7.8	—	+ 20.0%	5	+ 400.0%	+ 25.0%
\$250,000 to \$349,999	13	- 56.7%	- 40.9%	3.0	+ 150.0%	- 4.5%	5	- 73.7%	- 37.5%
\$350,000 or More	31	+ 933.3%	+ 93.8%	5.2	+ 766.7%	+ 29.2%	7	- 22.2%	+ 40.0%
<b>Total</b>	<b>83</b>	<b>+ 112.8%</b>	<b>+ 29.7%</b>	<b>5.5</b>	<b>+ 275.6%</b>	<b>+ 29.7%</b>	<b>17</b>	<b>- 43.3%</b>	<b>0.0%</b>

### Showings



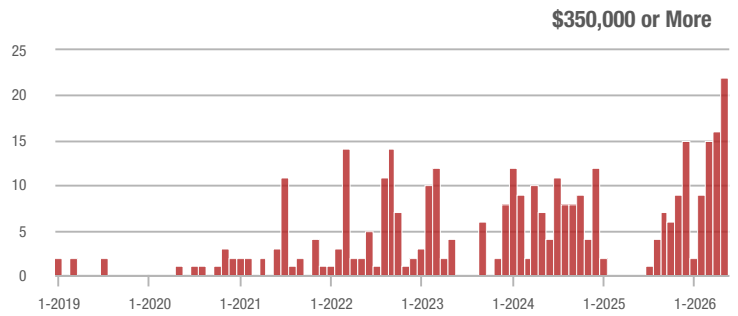
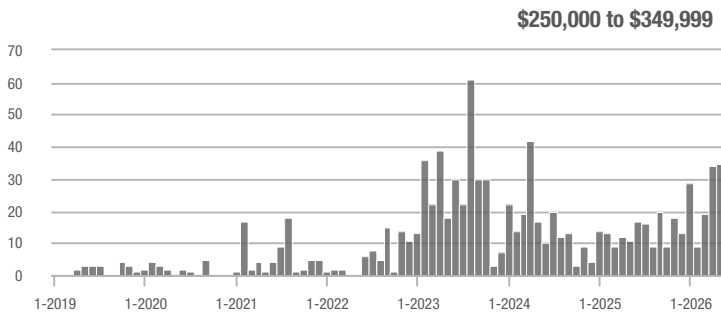
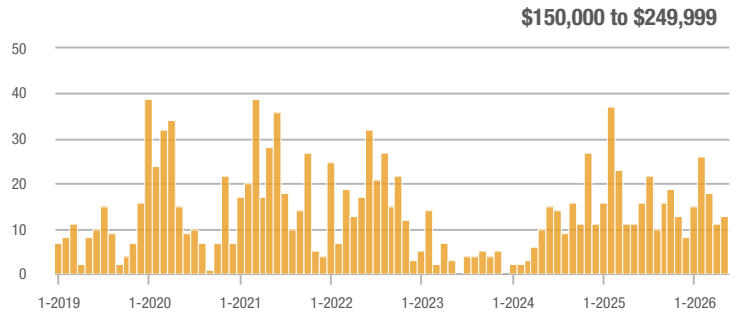
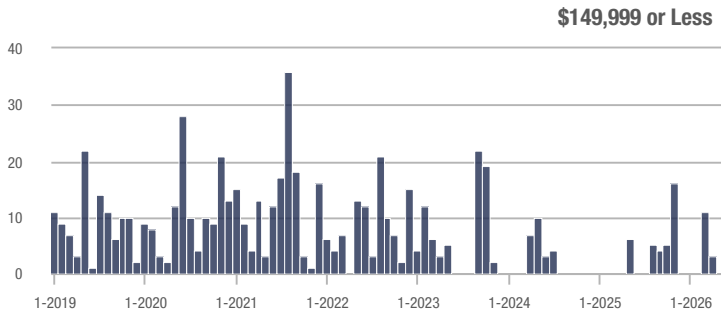
### Buyer Interest (Showings/Listings)



## Dunn

Price Range	Total Showings			Buyer Interest (Showings/Listings)			Managed Listings		
	May 2026	Year-Over-Year Change	Month-Over-Month Change	May 2026	Year-Over-Year Change	Month-Over-Month Change	May 2026	Year-Over-Year Change	Month-Over-Month Change
\$149,999 or Less	0	—	—	—	—	—	0	—	—
\$150,000 to \$249,999	13	+ 18.2%	+ 18.2%	2.6	- 29.7%	- 5.5%	5	+ 66.7%	+ 25.0%
\$250,000 to \$349,999	35	+ 218.2%	+ 2.9%	1.7	- 26.1%	- 15.6%	28	+ 211.1%	+ 3.7%
\$350,000 or More	22	—	+ 37.5%	2.6	—	- 13.3%	7	+ 600.0%	0.0%
<b>Total</b>	<b>70</b>	<b>+ 150.0%</b>	<b>+ 9.4%</b>	<b>2.0</b>	<b>- 12.5%</b>	<b>+ 6.6%</b>	<b>40</b>	<b>+ 185.7%</b>	<b>+ 2.6%</b>

### Showings



### Buyer Interest (Showings/Listings)

