

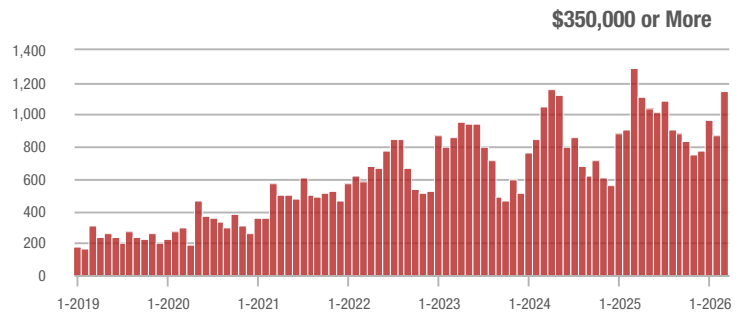
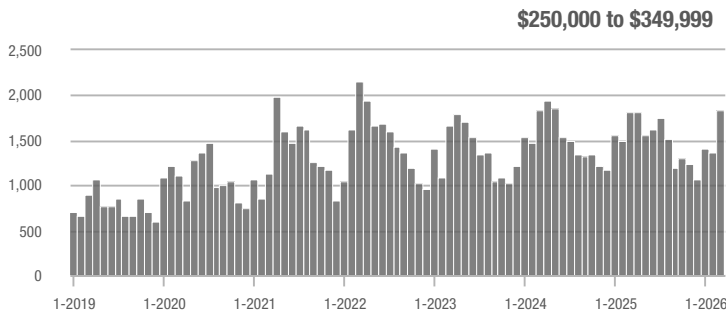
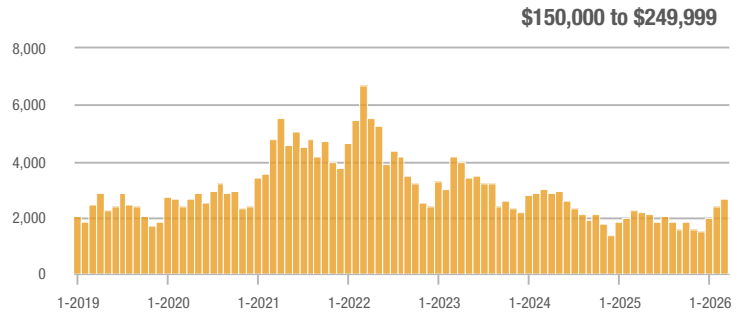
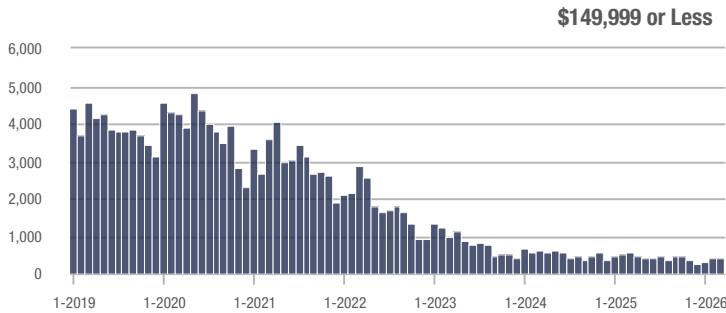
Showing Statistics

MLS Area	Total Showings	Buyer Interest (Showings / Listings)	Managed Listings
Cumberland County	6,107	4.7	1,404
Fayetteville	5,198	4.9	1,146
Harnett County	838	3.0	340
Zip Code 28314	1,276	5.5	245
Hoke County	1,142	4.3	298
Raeford	963	4.3	247
Sanford	519	3.5	170
Zip Code 28311	734	4.3	180
Zip Code 28306	942	5.0	206
Hope Mills	646	4.8	161
Lee County	420	3.6	132
Zip Code 28304	786	5.3	162
Zip Code 27332	246	3.1	86
Zip Code 28303	642	4.5	146
Spring Lake	310	2.8	124
Robeson County	407	2.4	202
Cameron	199	3.5	61
Zip Code 27330	273	3.9	83
Zip Code 28312	344	4.4	87
Moore County	178	2.1	123
Lumberton	196	2.6	85
Zip Code 28305	223	3.9	61
Lillington	111	2.9	69
Zip Code 28358	176	3.0	71
Bunnlevel	40	3.6	12
Sampson County	94	2.2	50
Zip Code 28301	270	4.4	68
Parkton	114	2.6	46
Stedman	100	5.5	20
Dunn	63	2.5	28

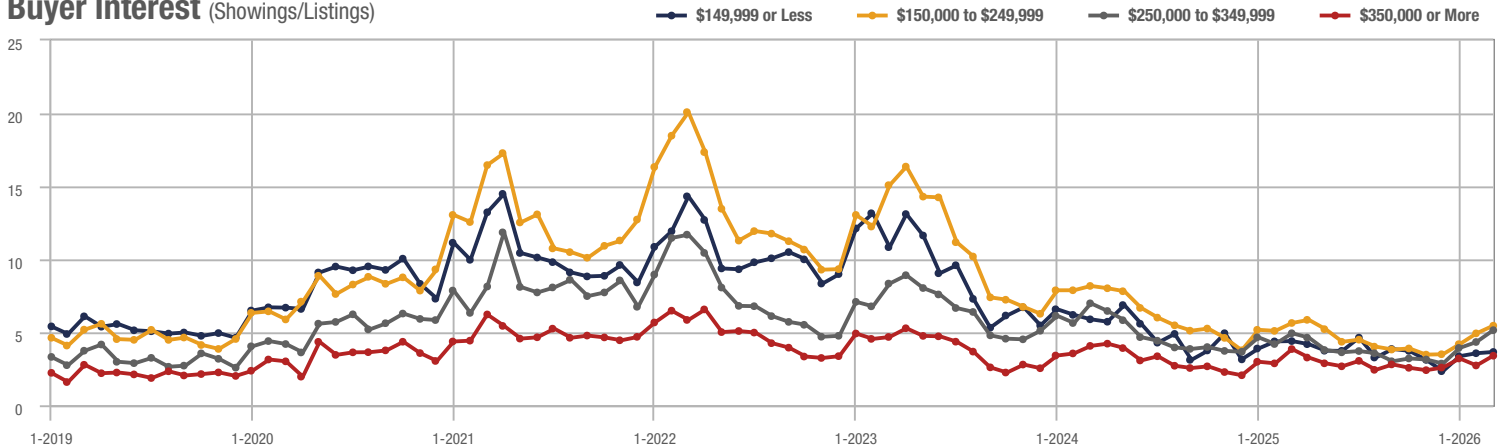
Cumberland County

Price Range	Total Showings			Buyer Interest (Showings/Listings)			Managed Listings		
	March 2026	Year-Over-Year Change	Month-Over-Month Change	March 2026	Year-Over-Year Change	Month-Over-Month Change	March 2026	Year-Over-Year Change	Month-Over-Month Change
\$149,999 or Less	435	+ 20.4%	+ 12.1%	3.7	- 15.9%	+ 2.4%	125	- 15.5%	- 0.8%
\$150,000 to \$249,999	2,683	+ 20.4%	+ 13.7%	5.5	- 1.8%	+ 10.7%	517	+ 23.4%	- 0.6%
\$250,000 to \$349,999	1,842	+ 1.4%	+ 34.1%	5.1	+ 4.1%	+ 18.7%	397	- 13.7%	+ 8.2%
\$350,000 or More	1,147	- 11.6%	+ 31.7%	3.4	- 12.8%	+ 24.5%	365	- 6.9%	+ 4.3%
Total	6,107	+ 3.4%	+ 22.3%	4.7	+ 4.5%	+ 18.7%	1,404	- 1.1%	+ 3.0%

Showings



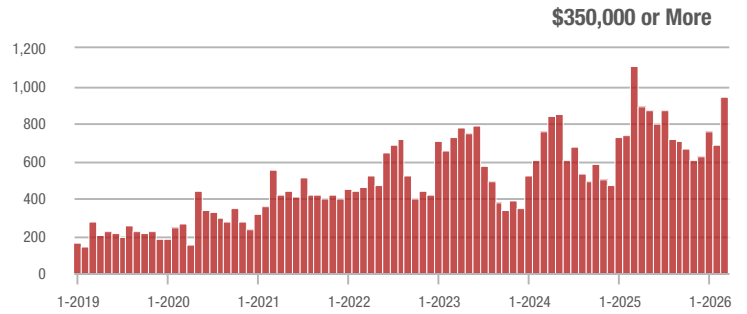
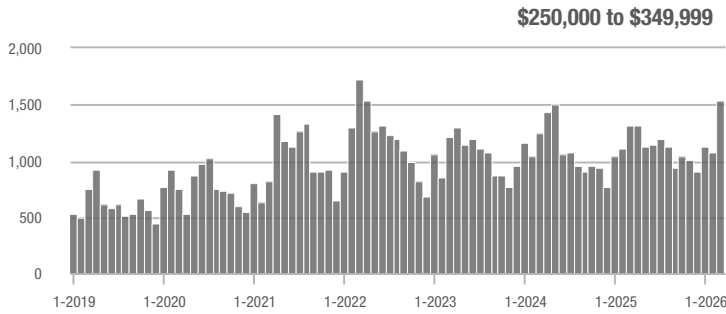
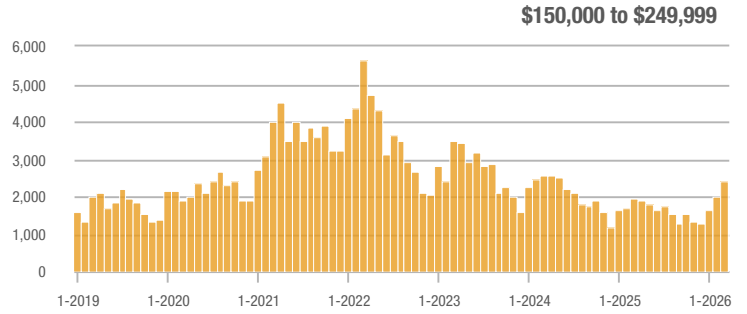
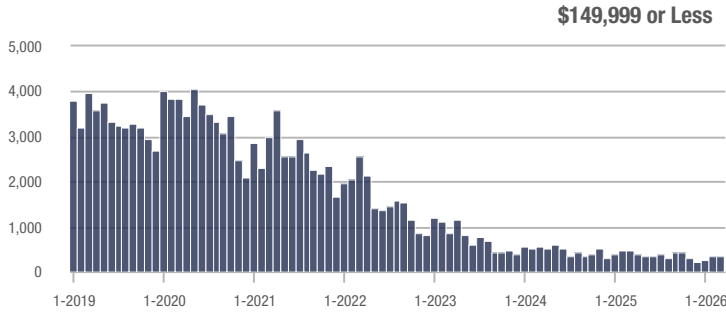
Buyer Interest (Showings/Listings)



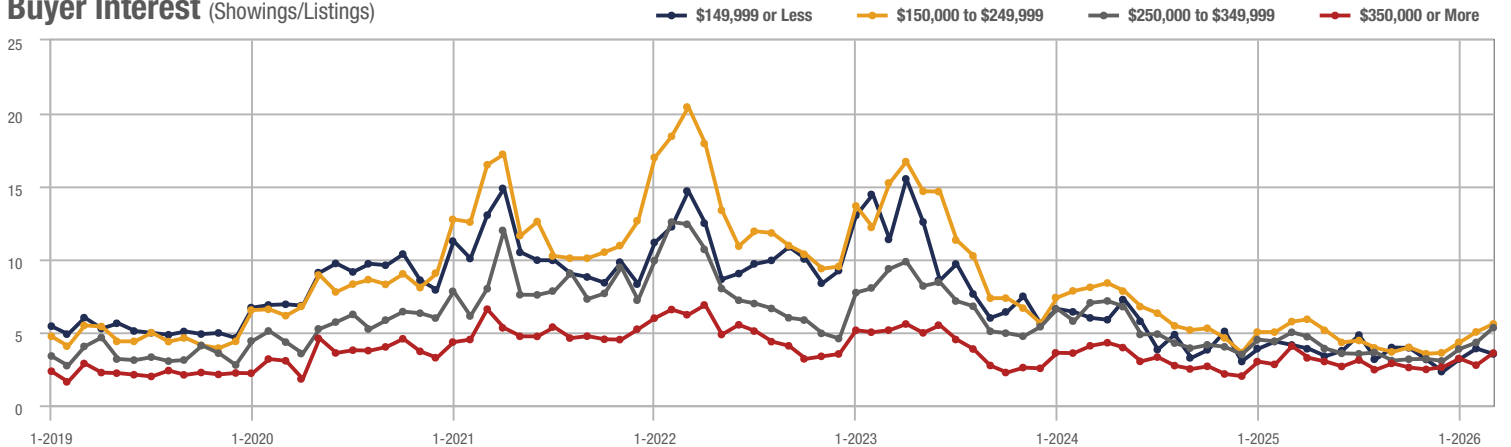
Fayetteville

Price Range	Total Showings			Buyer Interest (Showings/Listings)			Managed Listings		
	March 2026	Year-Over-Year Change	Month-Over-Month Change	March 2026	Year-Over-Year Change	Month-Over-Month Change	March 2026	Year-Over-Year Change	Month-Over-Month Change
\$149,999 or Less	338	+ 21.5%	- 4.8%	3.5	- 14.6%	- 9.6%	104	- 20.6%	- 2.8%
\$150,000 to \$249,999	2,386	+ 21.5%	+ 18.9%	5.6	- 1.8%	+ 10.9%	449	+ 24.0%	+ 3.5%
\$250,000 to \$349,999	1,531	+ 17.0%	+ 42.2%	5.3	+ 6.0%	+ 23.6%	313	+ 3.3%	+ 9.4%
\$350,000 or More	943	- 14.5%	+ 36.9%	3.6	- 12.2%	+ 30.1%	280	- 11.9%	+ 2.6%
Total	5,198	+ 7.4%	+ 26.0%	4.9	+ 4.4%	+ 20.9%	1,146	+ 2.9%	+ 4.2%

Showings



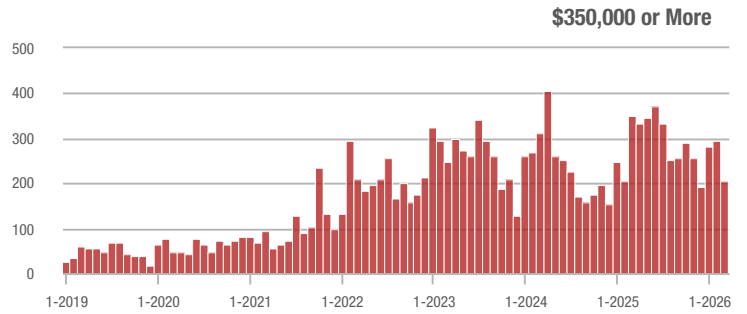
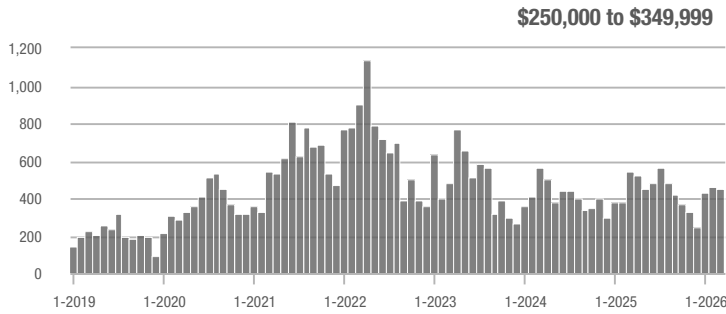
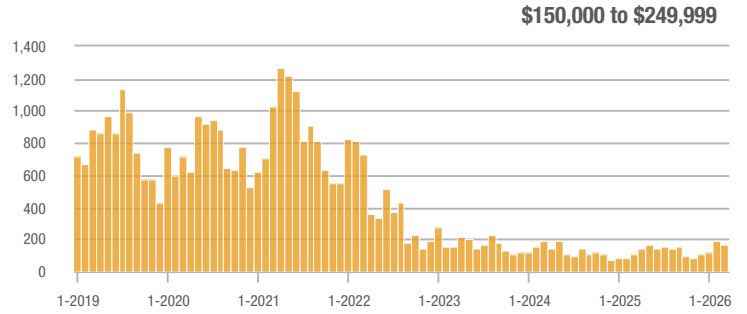
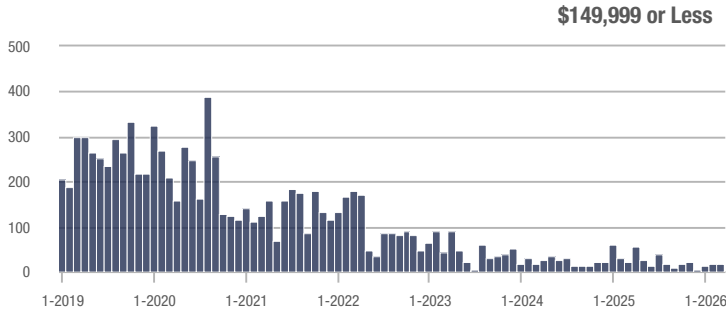
Buyer Interest (Showings/Listings)



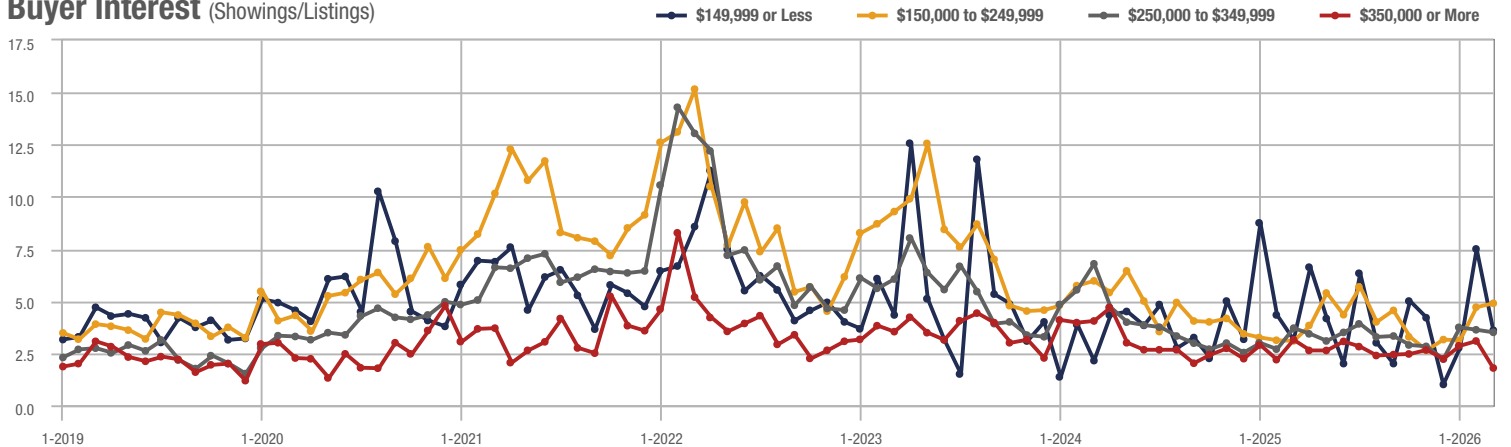
Harnett County

Price Range	Total Showings			Buyer Interest (Showings/Listings)			Managed Listings		
	March 2026	Year-Over-Year Change	Month-Over-Month Change	March 2026	Year-Over-Year Change	Month-Over-Month Change	March 2026	Year-Over-Year Change	Month-Over-Month Change
\$149,999 or Less	18	+ 47.3%	+ 20.0%	3.6	+ 16.1%	- 52.0%	5	- 44.4%	+ 150.0%
\$150,000 to \$249,999	162	+ 47.3%	- 13.4%	4.9	+ 58.1%	+ 4.0%	35	- 7.9%	- 23.9%
\$250,000 to \$349,999	453	- 16.7%	- 2.4%	3.5	- 5.4%	- 3.4%	168	- 11.6%	- 5.6%
\$350,000 or More	205	- 41.8%	- 30.3%	1.8	- 41.9%	- 42.0%	132	- 9.0%	+ 0.8%
Total	838	- 18.6%	- 12.7%	3.0	- 8.5%	- 8.3%	340	- 11.0%	- 4.8%

Showings



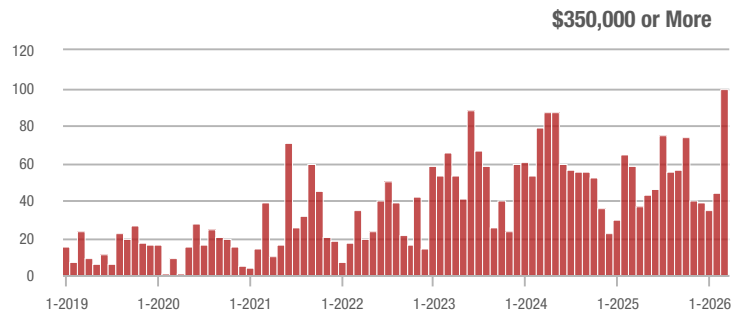
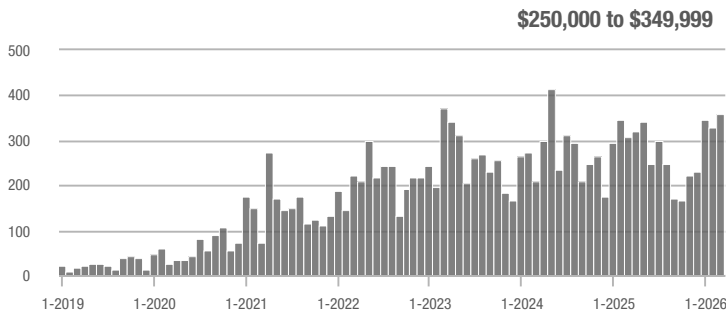
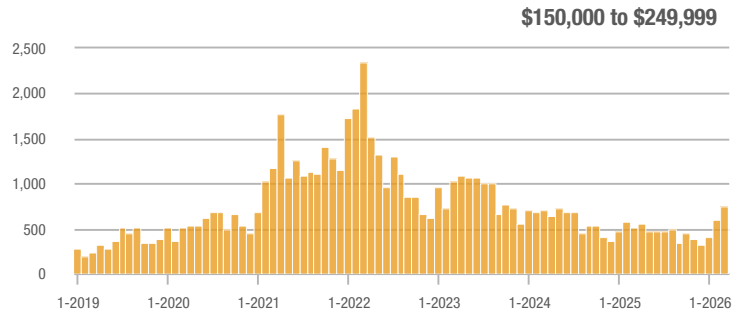
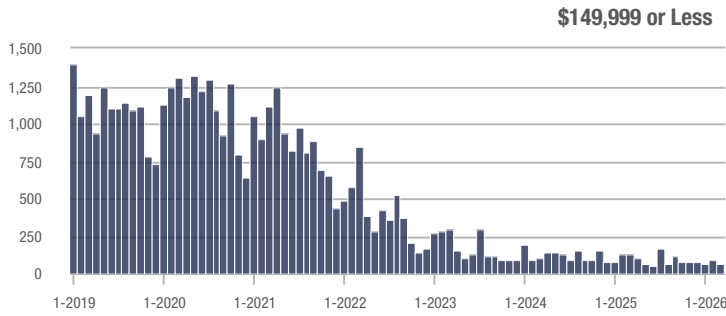
Buyer Interest (Showings/Listings)



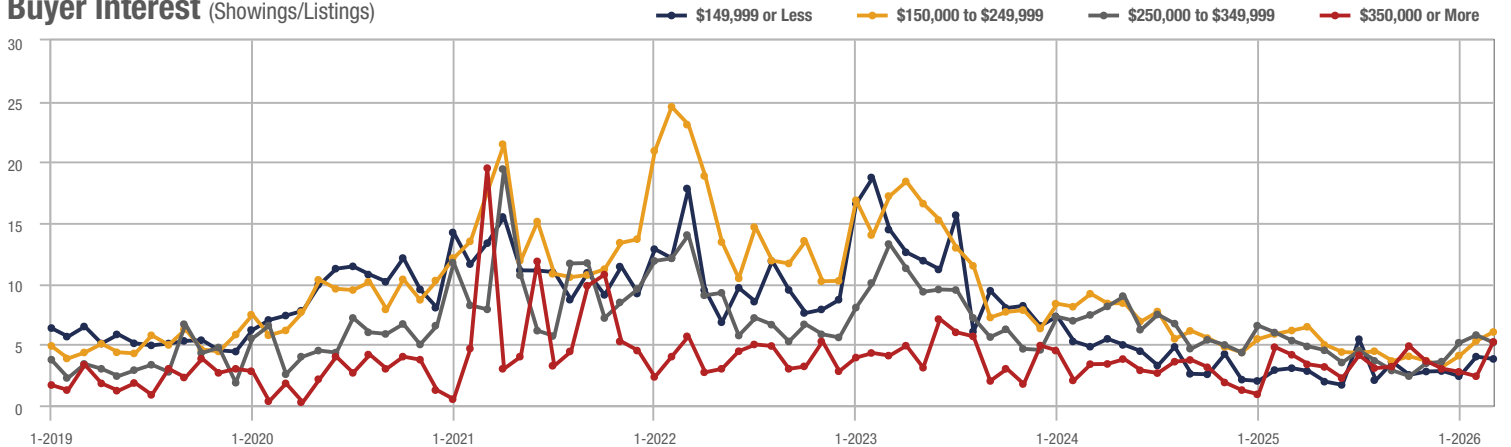
Zip Code 28314

Price Range	Total Showings			Buyer Interest (Showings/Listings)			Managed Listings		
	March 2026	Year-Over-Year Change	Month-Over-Month Change	March 2026	Year-Over-Year Change	Month-Over-Month Change	March 2026	Year-Over-Year Change	Month-Over-Month Change
\$149,999 or Less	67	+ 48.0%	- 28.0%	3.8	+ 22.6%	- 4.7%	21	- 55.3%	- 27.6%
\$150,000 to \$249,999	752	+ 48.0%	+ 24.7%	6.0	- 3.2%	+ 14.0%	128	+ 52.4%	+ 2.4%
\$250,000 to \$349,999	358	+ 16.6%	+ 8.5%	5.2	- 1.9%	- 10.6%	76	+ 26.7%	+ 18.8%
\$350,000 or More	99	+ 70.7%	+ 125.0%	5.2	+ 23.8%	+ 118.1%	20	+ 33.3%	0.0%
Total	1,276	+ 26.7%	+ 19.3%	5.5	+ 6.5%	+ 15.8%	245	+ 18.9%	+ 2.9%

Showings



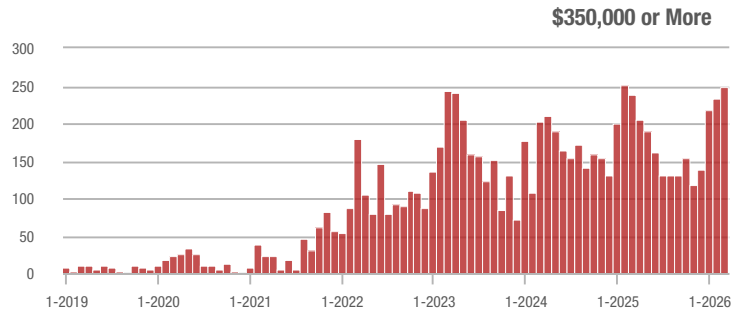
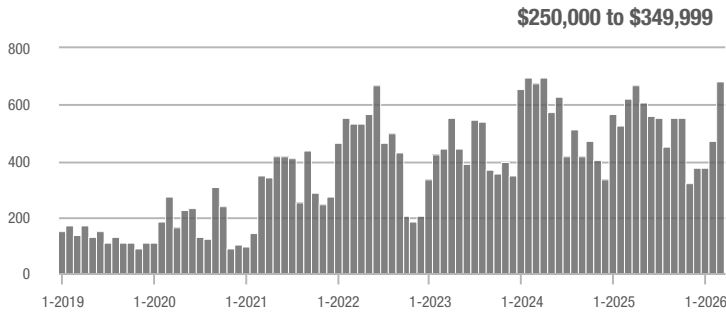
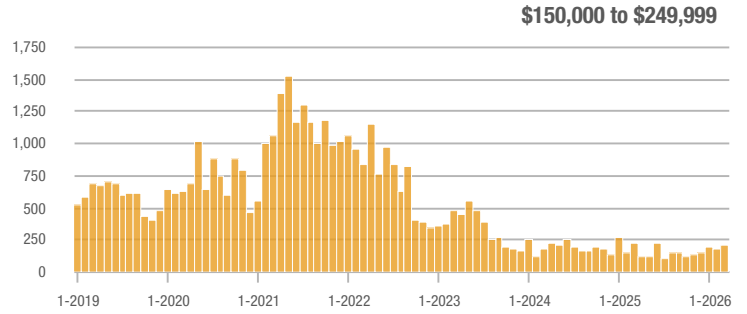
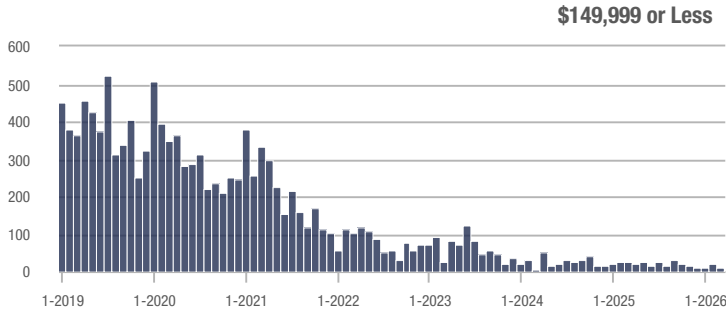
Buyer Interest (Showings/Listings)



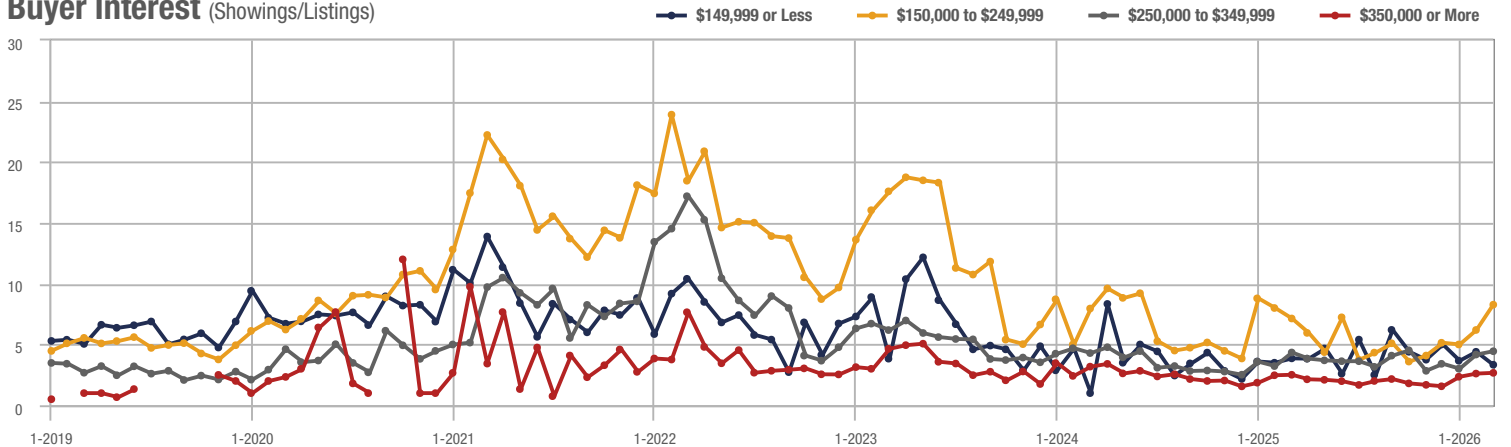
Hoke County

Price Range	Total Showings			Buyer Interest (Showings/Listings)			Managed Listings		
	March 2026	Year-Over-Year Change	Month-Over-Month Change	March 2026	Year-Over-Year Change	Month-Over-Month Change	March 2026	Year-Over-Year Change	Month-Over-Month Change
\$149,999 or Less	10	- 9.0%	- 54.5%	3.3	- 15.4%	- 24.2%	3	- 57.1%	- 40.0%
\$150,000 to \$249,999	202	- 9.0%	+ 16.1%	8.3	+ 16.9%	+ 33.6%	29	- 14.7%	- 12.1%
\$250,000 to \$349,999	682	+ 9.5%	+ 44.8%	4.4	+ 2.3%	+ 6.5%	168	- 12.0%	+ 15.1%
\$350,000 or More	248	+ 4.2%	+ 6.0%	2.7	+ 8.0%	+ 2.3%	98	- 25.8%	+ 4.3%
Total	1,142	+ 2.9%	+ 26.7%	4.3	+ 25.7%	+ 18.2%	298	- 18.1%	+ 7.2%

Showings



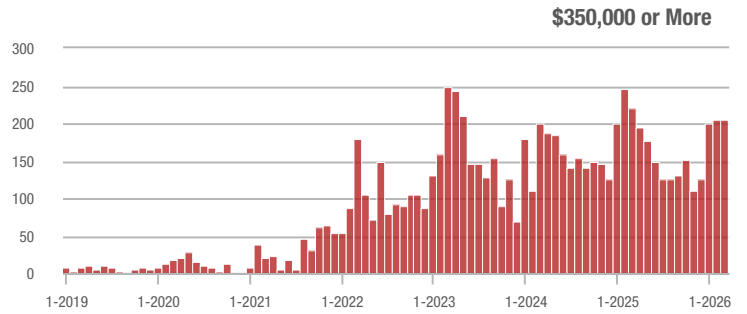
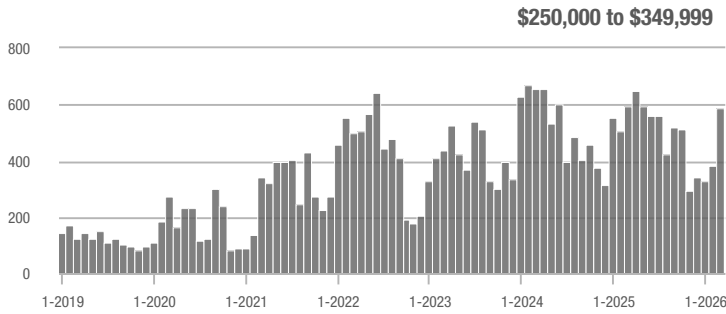
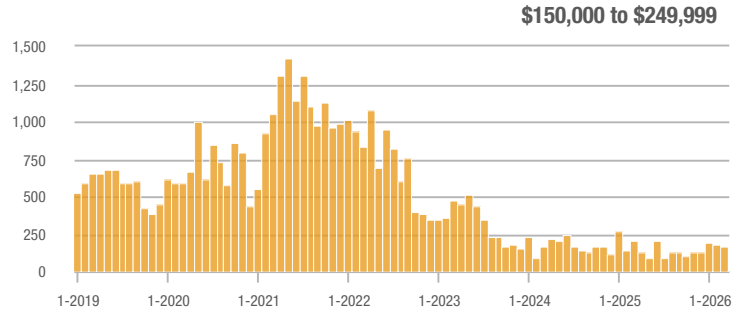
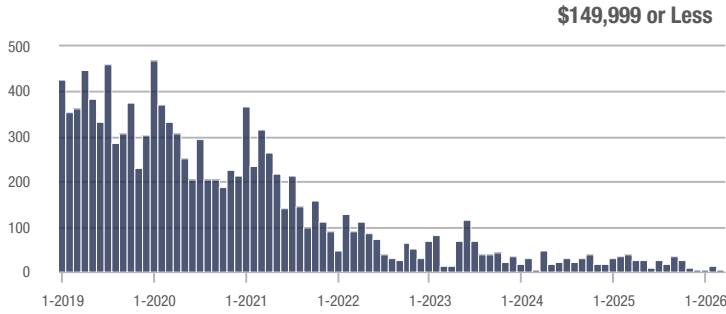
Buyer Interest (Showings/Listings)



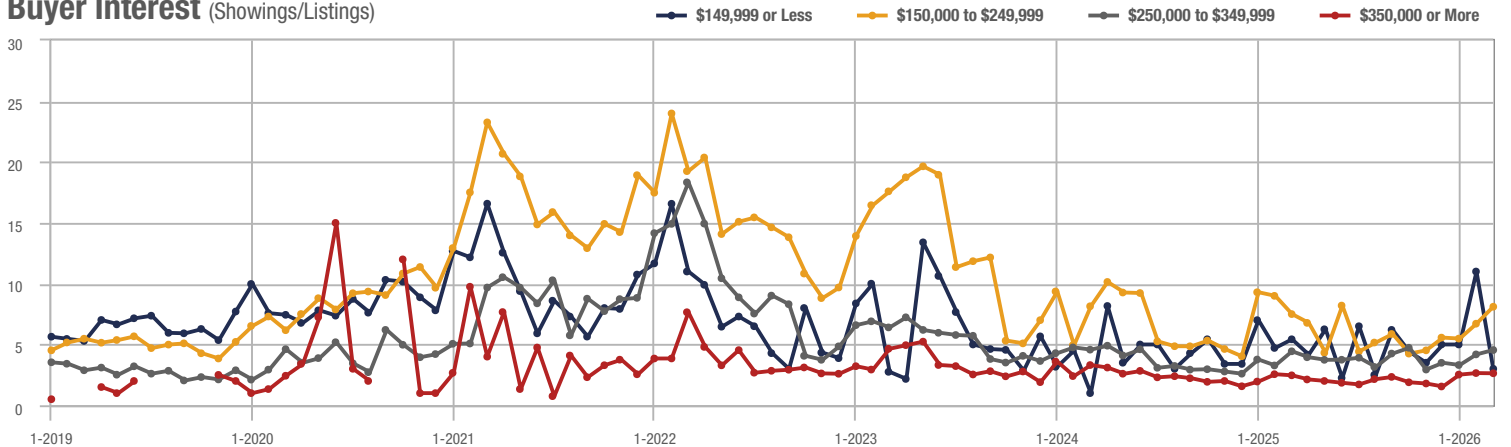
Raeford

Price Range	Total Showings			Buyer Interest (Showings/Listings)			Managed Listings		
	March 2026	Year-Over-Year Change	Month-Over-Month Change	March 2026	Year-Over-Year Change	Month-Over-Month Change	March 2026	Year-Over-Year Change	Month-Over-Month Change
\$149,999 or Less	3	- 14.1%	- 72.7%	3.0	- 44.4%	- 72.7%	1	- 87.5%	0.0%
\$150,000 to \$249,999	171	- 14.1%	- 1.7%	8.1	+ 8.0%	+ 20.8%	25	- 13.8%	- 16.7%
\$250,000 to \$349,999	585	- 1.7%	+ 51.6%	4.5	+ 2.3%	+ 8.6%	140	- 20.0%	+ 18.6%
\$350,000 or More	204	- 7.7%	0.0%	2.6	+ 4.0%	- 0.6%	81	- 35.2%	- 1.2%
Total	963	- 8.6%	+ 24.3%	4.3	+ 24.7%	+ 16.2%	247	- 26.7%	+ 6.9%

Showings



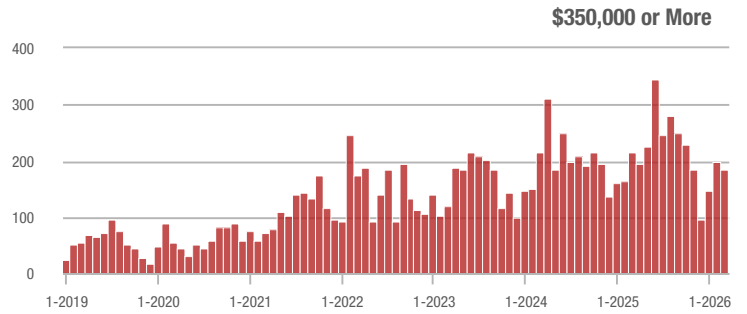
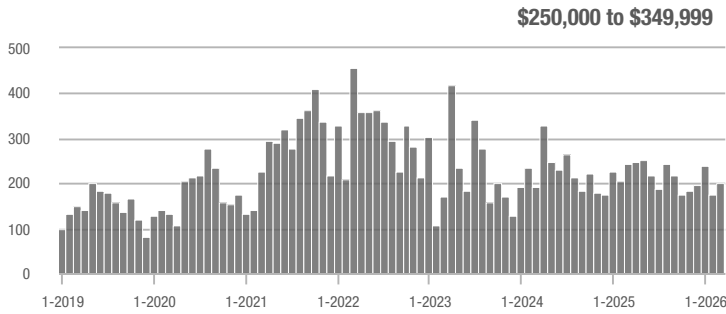
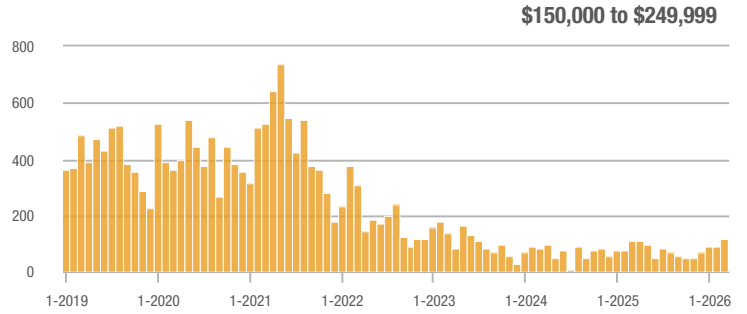
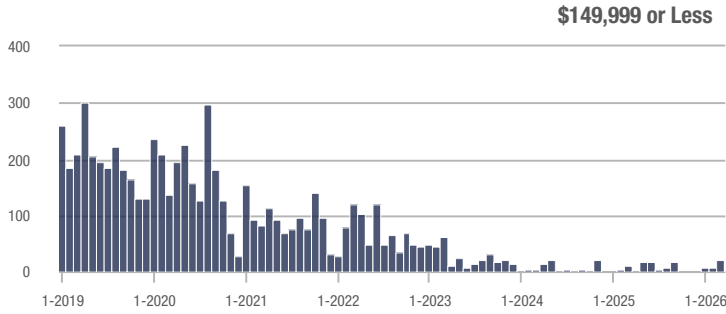
Buyer Interest (Showings/Listings)



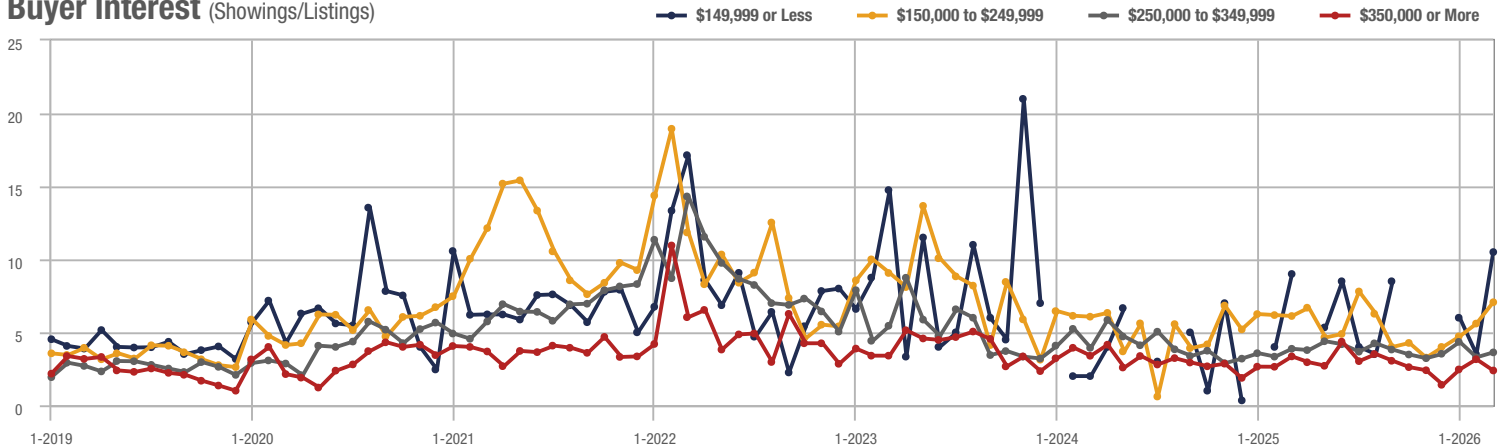
Sanford

Price Range	Total Showings			Buyer Interest (Showings/Listings)			Managed Listings		
	March 2026	Year-Over-Year Change	Month-Over-Month Change	March 2026	Year-Over-Year Change	Month-Over-Month Change	March 2026	Year-Over-Year Change	Month-Over-Month Change
\$149,999 or Less	21	+ 3.7%	+ 200.0%	10.5	+ 16.7%	+ 200.0%	2	+ 100.0%	0.0%
\$150,000 to \$249,999	113	+ 3.7%	+ 29.9%	7.1	+ 16.4%	+ 26.1%	16	- 15.8%	0.0%
\$250,000 to \$349,999	200	- 17.7%	+ 13.6%	3.6	- 7.7%	+ 10.3%	63	- 19.2%	- 7.4%
\$350,000 or More	185	- 14.7%	- 6.6%	2.4	- 29.4%	- 24.5%	89	+ 1.1%	+ 17.1%
Total	519	- 10.2%	+ 10.9%	3.5	- 1.8%	+ 5.7%	170	- 8.6%	+ 4.9%

Showings



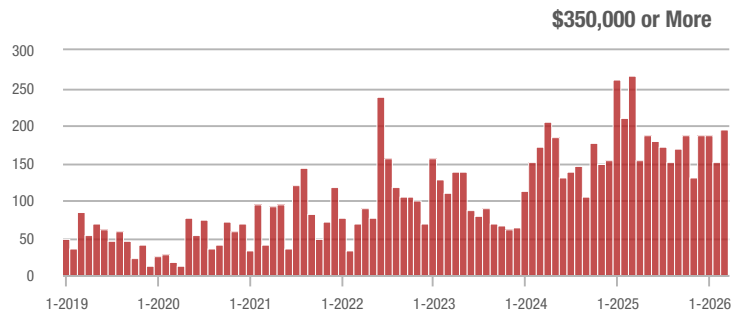
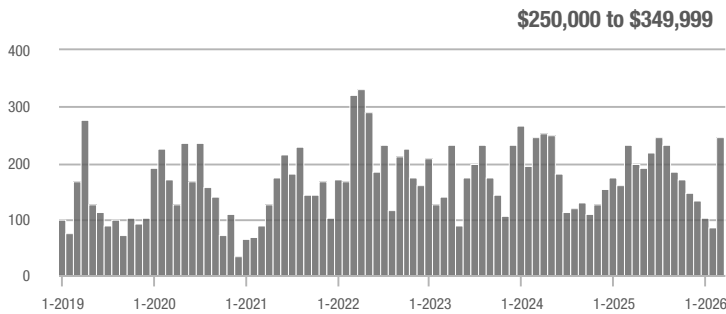
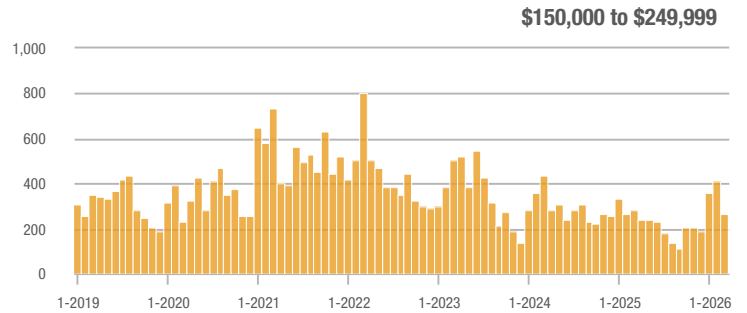
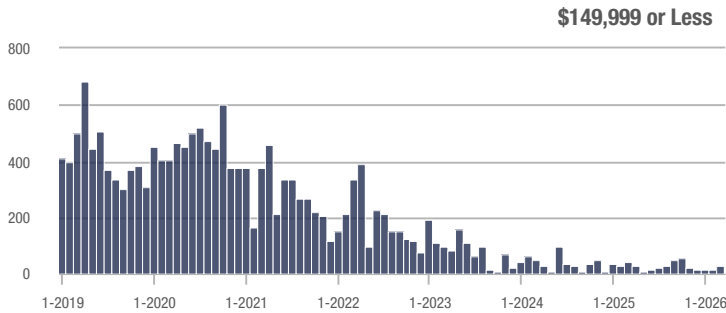
Buyer Interest (Showings/Listings)



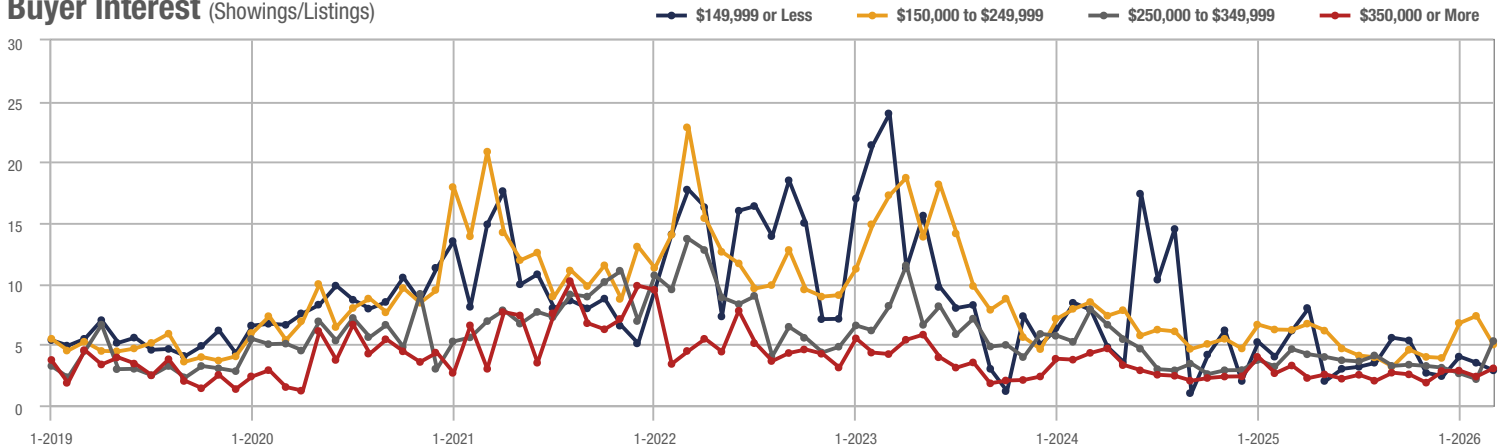
Zip Code 28311

Price Range	Total Showings			Buyer Interest (Showings/Listings)			Managed Listings		
	March 2026	Year-Over-Year Change	Month-Over-Month Change	March 2026	Year-Over-Year Change	Month-Over-Month Change	March 2026	Year-Over-Year Change	Month-Over-Month Change
\$149,999 or Less	24	- 4.6%	+ 71.4%	2.9	- 52.5%	- 17.9%	9	+ 12.5%	+ 80.0%
\$150,000 to \$249,999	268	- 4.6%	- 34.3%	5.0	- 19.4%	- 32.0%	57	+ 21.3%	- 6.6%
\$250,000 to \$349,999	247	+ 6.0%	+ 187.2%	5.3	+ 15.2%	+ 145.5%	53	- 14.5%	+ 6.0%
\$350,000 or More	195	- 27.0%	+ 28.3%	3.0	- 9.1%	+ 28.5%	61	- 31.5%	- 9.0%
Total	734	- 10.9%	+ 11.2%	4.3	+ 1.9%	+ 13.1%	180	- 12.6%	- 1.6%

Showings



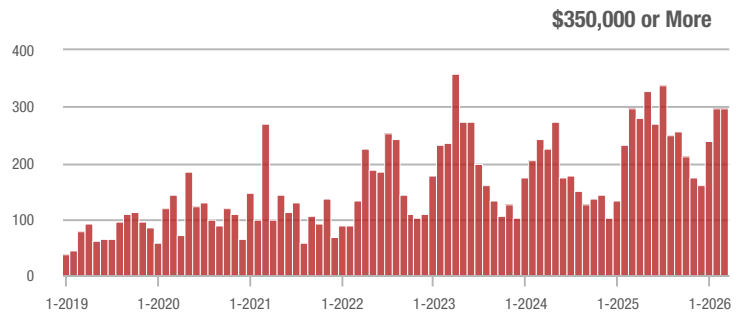
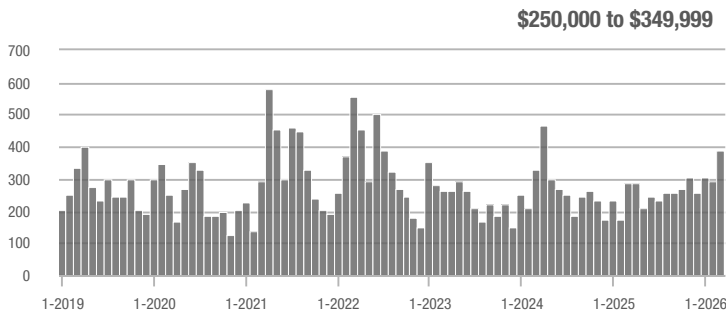
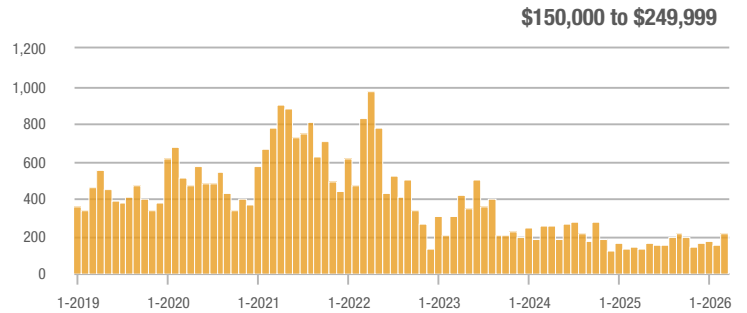
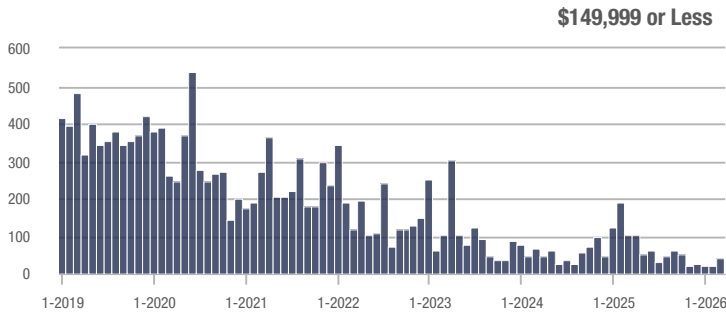
Buyer Interest (Showings/Listings)



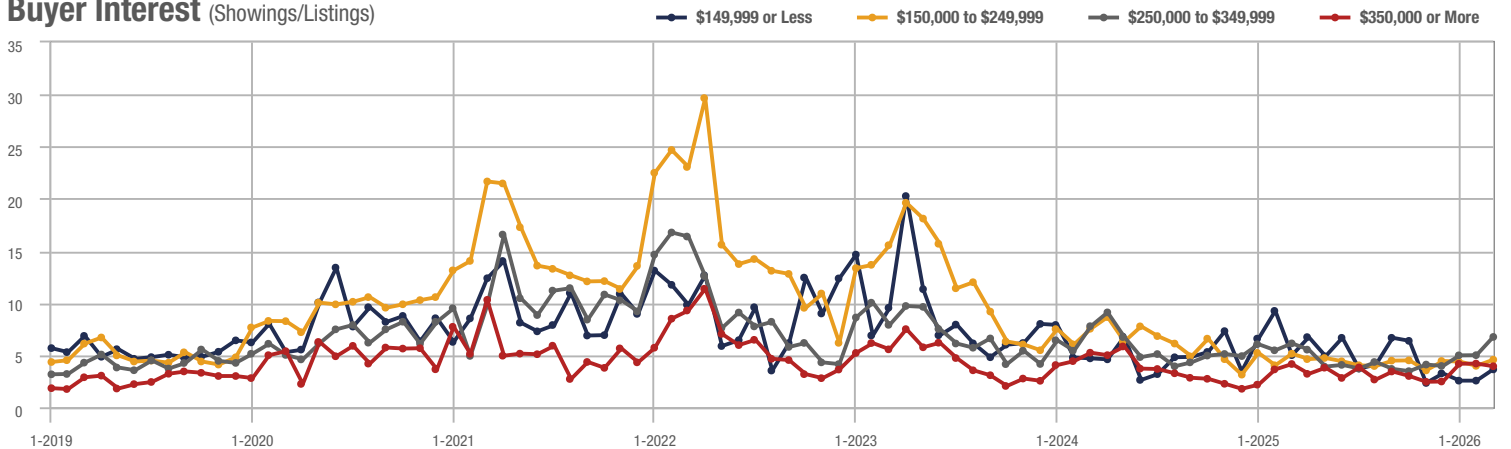
Zip Code 28306

Price Range	Total Showings			Buyer Interest (Showings/Listings)			Managed Listings		
	March 2026	Year-Over-Year Change	Month-Over-Month Change	March 2026	Year-Over-Year Change	Month-Over-Month Change	March 2026	Year-Over-Year Change	Month-Over-Month Change
\$149,999 or Less	41	+ 47.3%	+ 78.3%	3.6	- 28.0%	+ 42.3%	13	- 38.1%	+ 18.2%
\$150,000 to \$249,999	215	+ 47.3%	+ 36.1%	4.6	- 9.8%	+ 14.9%	49	+ 69.0%	+ 14.0%
\$250,000 to \$349,999	389	+ 36.5%	+ 32.8%	6.8	+ 11.5%	+ 35.0%	61	+ 29.8%	- 3.2%
\$350,000 or More	297	- 0.3%	+ 0.3%	3.9	- 7.1%	- 6.1%	83	- 4.6%	+ 2.5%
Total	942	+ 13.5%	+ 22.3%	5.0	+ 1.4%	+ 17.6%	206	+ 12.0%	+ 4.0%

Showings



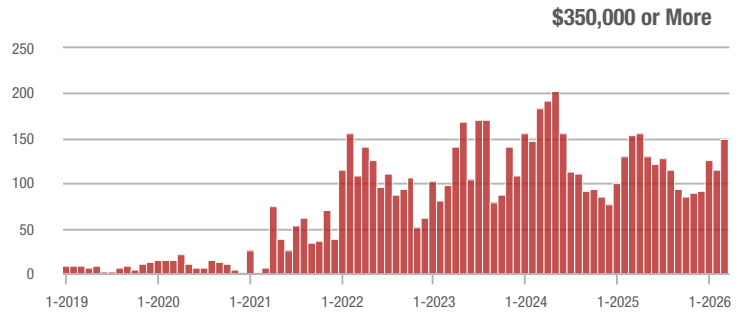
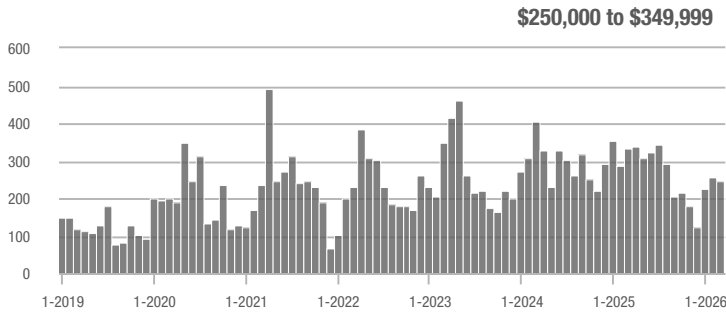
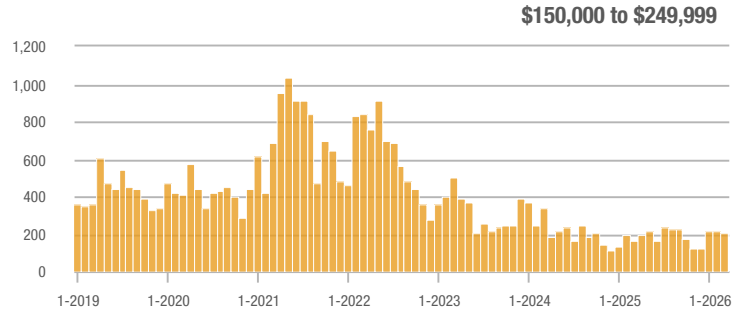
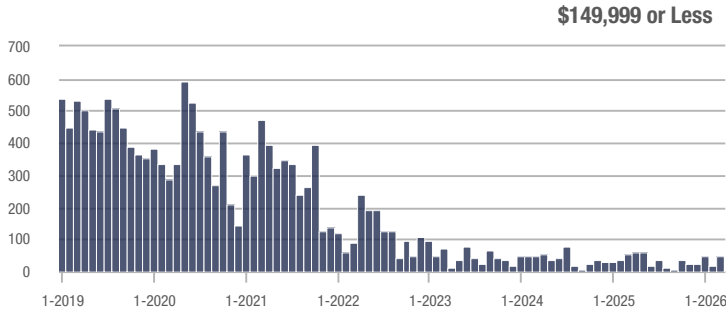
Buyer Interest (Showings/Listings)



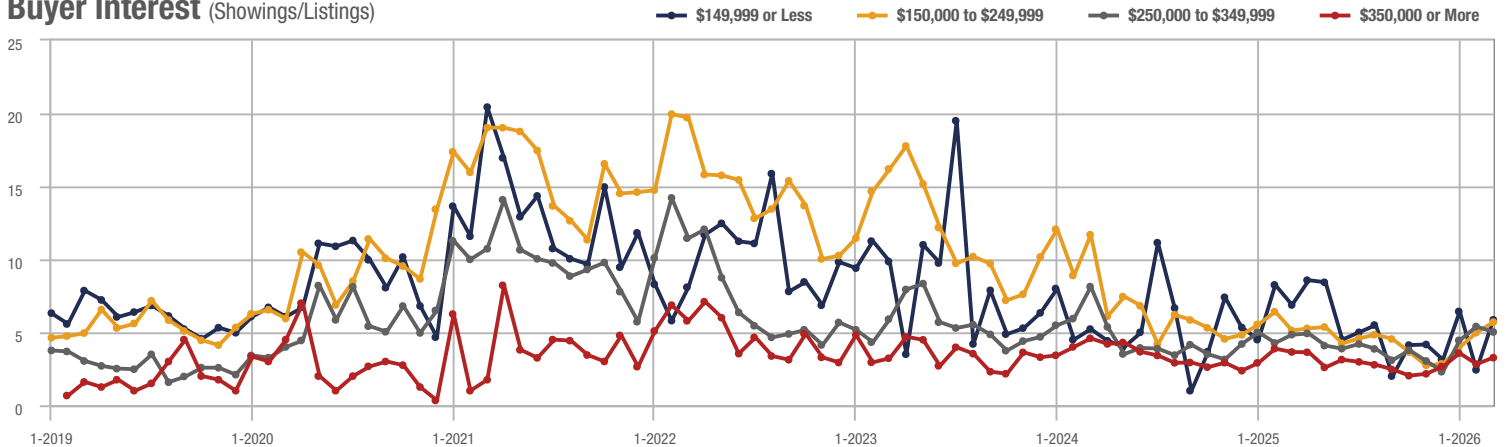
Hope Mills

Price Range	Total Showings			Buyer Interest (Showings/Listings)			Managed Listings		
	March 2026	Year-Over-Year Change	Month-Over-Month Change	March 2026	Year-Over-Year Change	Month-Over-Month Change	March 2026	Year-Over-Year Change	Month-Over-Month Change
\$149,999 or Less	46	+ 22.3%	+ 170.6%	5.9	- 14.5%	+ 141.2%	8	0.0%	0.0%
\$150,000 to \$249,999	203	+ 22.3%	- 6.0%	5.7	+ 11.8%	+ 14.5%	39	+ 11.4%	- 20.4%
\$250,000 to \$349,999	247	- 25.4%	- 4.3%	5.0	+ 4.2%	- 7.0%	58	- 37.6%	0.0%
\$350,000 or More	150	- 2.0%	+ 29.3%	3.3	- 10.8%	+ 15.7%	56	+ 30.2%	+ 9.8%
Total	646	- 8.4%	+ 6.4%	4.8	+ 1.9%	+ 9.7%	161	- 10.1%	- 3.0%

Showings



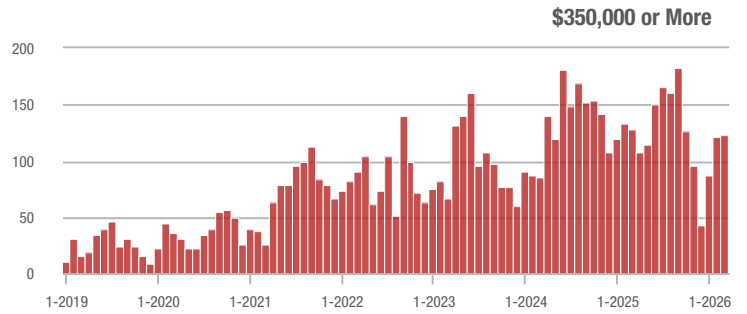
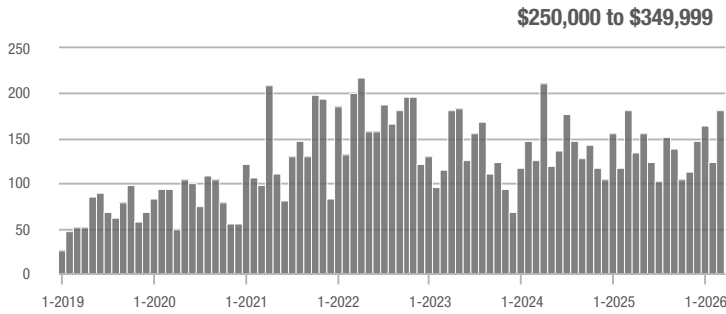
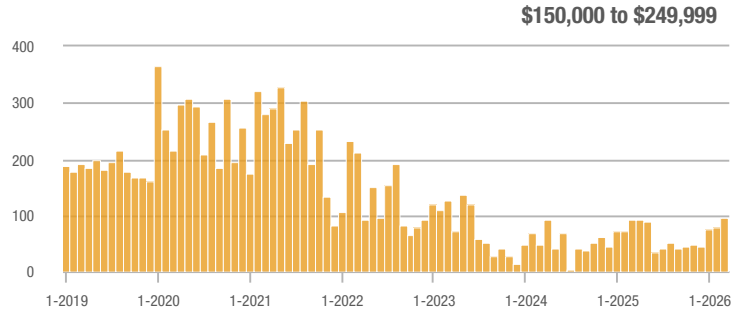
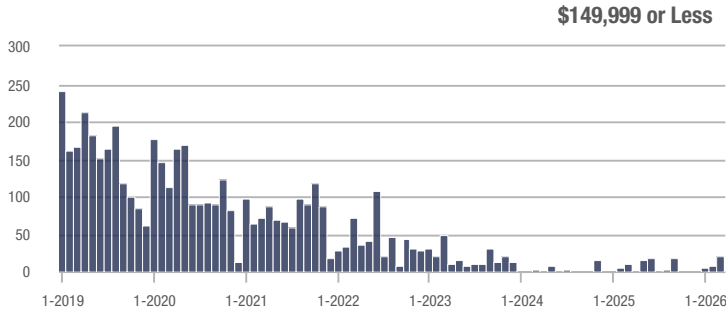
Buyer Interest (Showings/Listings)



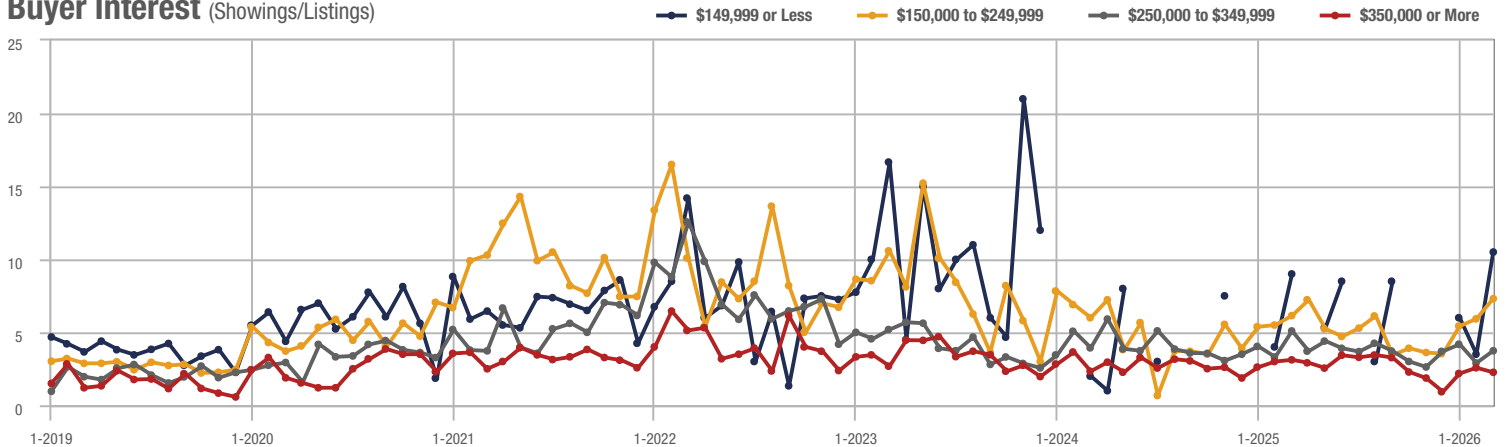
Lee County

Price Range	Total Showings			Buyer Interest (Showings/Listings)			Managed Listings		
	March 2026	Year-Over-Year Change	Month-Over-Month Change	March 2026	Year-Over-Year Change	Month-Over-Month Change	March 2026	Year-Over-Year Change	Month-Over-Month Change
\$149,999 or Less	21	+ 4.4%	+ 200.0%	10.5	+ 16.7%	+ 200.0%	2	+ 100.0%	0.0%
\$150,000 to \$249,999	95	+ 4.4%	+ 23.4%	7.3	+ 19.7%	+ 23.4%	13	- 13.3%	0.0%
\$250,000 to \$349,999	181	- 0.5%	+ 47.2%	3.7	- 27.5%	+ 29.0%	55	+ 25.0%	+ 3.8%
\$350,000 or More	123	- 4.7%	+ 1.7%	2.3	- 25.8%	- 12.1%	62	+ 21.6%	+ 10.7%
Total	420	+ 2.2%	+ 28.0%	3.6	- 14.1%	+ 20.3%	132	+ 18.9%	+ 6.5%

Showings



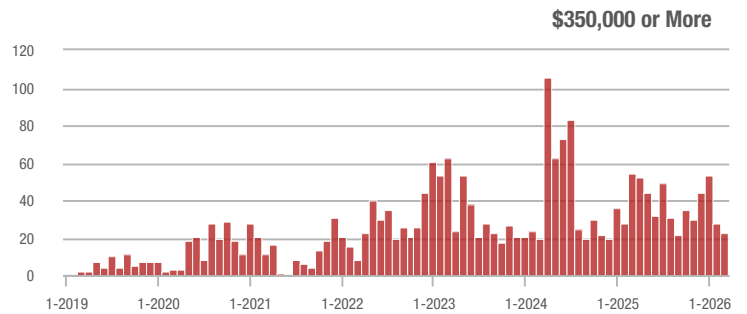
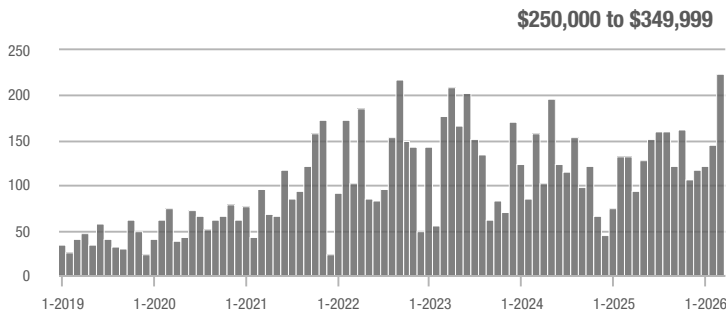
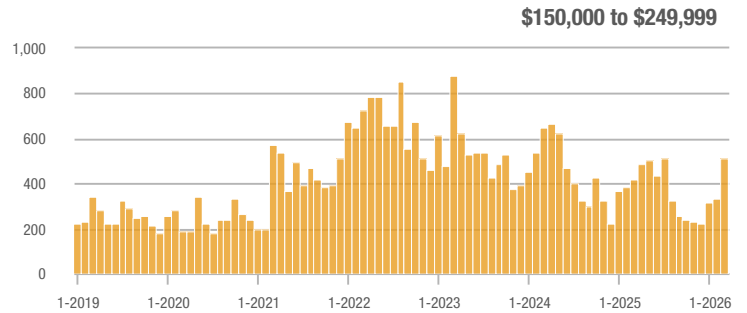
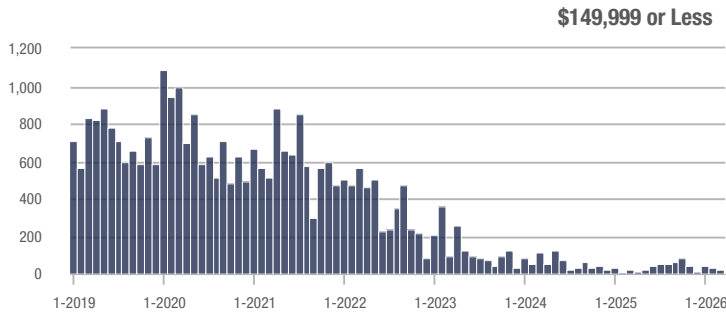
Buyer Interest (Showings/Listings)



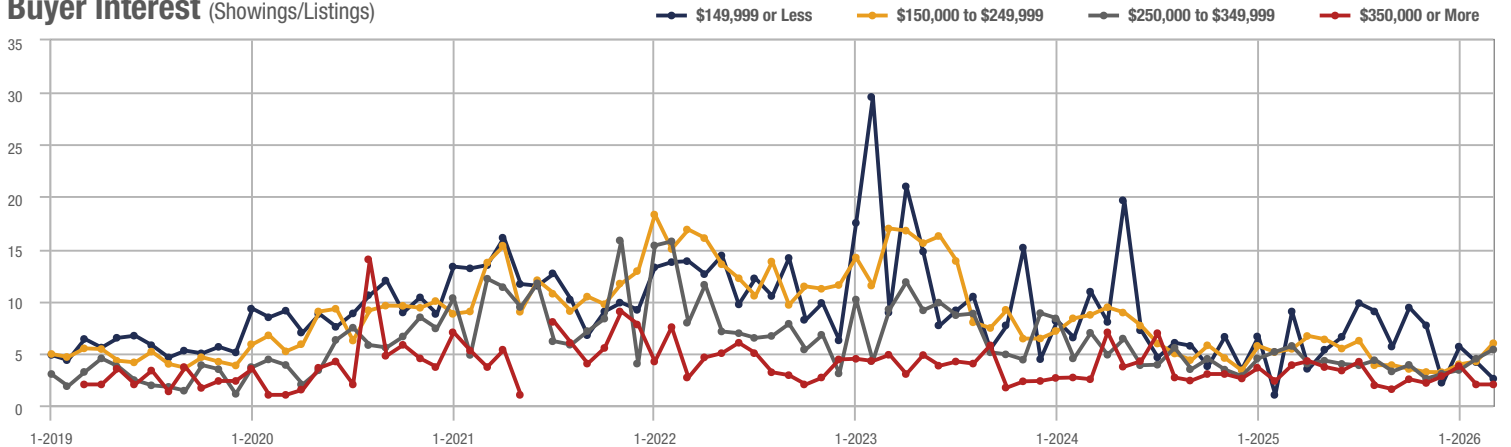
Zip Code 28304

Price Range	Total Showings			Buyer Interest (Showings/Listings)			Managed Listings		
	March 2026	Year-Over-Year Change	Month-Over-Month Change	March 2026	Year-Over-Year Change	Month-Over-Month Change	March 2026	Year-Over-Year Change	Month-Over-Month Change
\$149,999 or Less	25	+ 23.0%	- 13.8%	2.6	- 71.1%	- 38.3%	12	+ 500.0%	+ 20.0%
\$150,000 to \$249,999	514	+ 23.0%	+ 52.5%	6.0	+ 11.1%	+ 41.6%	92	+ 9.5%	+ 8.2%
\$250,000 to \$349,999	224	+ 69.7%	+ 53.4%	5.4	- 5.3%	+ 19.8%	47	+ 62.1%	+ 23.7%
\$350,000 or More	23	- 57.4%	- 17.9%	2.0	- 48.7%	0.0%	11	- 31.3%	- 26.7%
Total	786	+ 26.4%	+ 45.6%	5.3	+ 2.2%	+ 33.0%	162	+ 23.7%	+ 9.5%

Showings



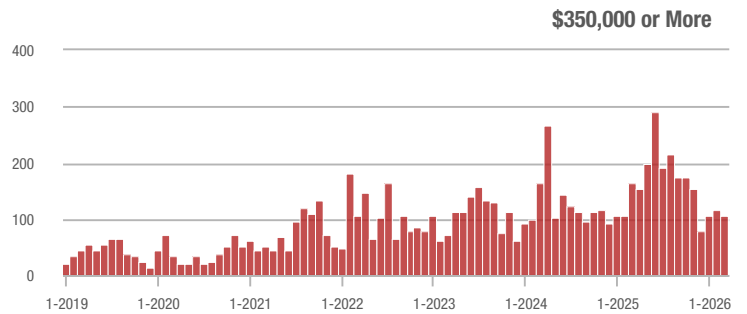
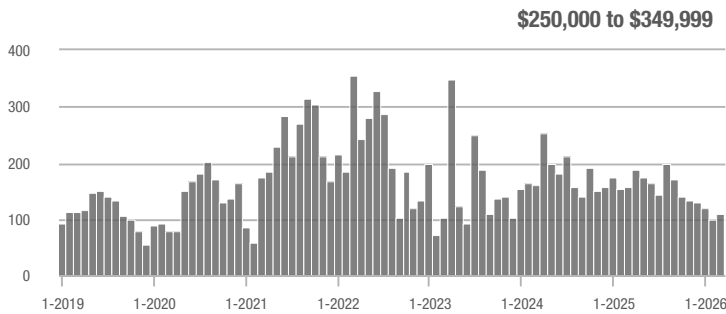
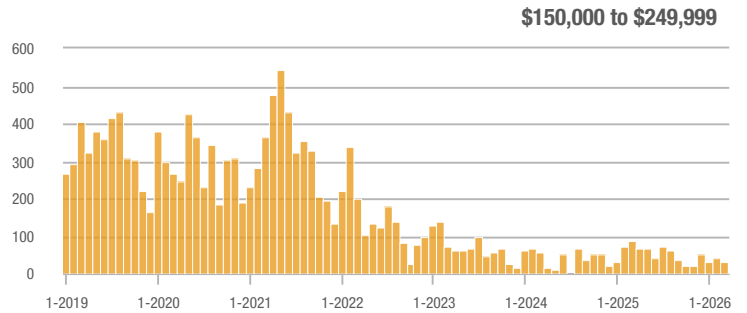
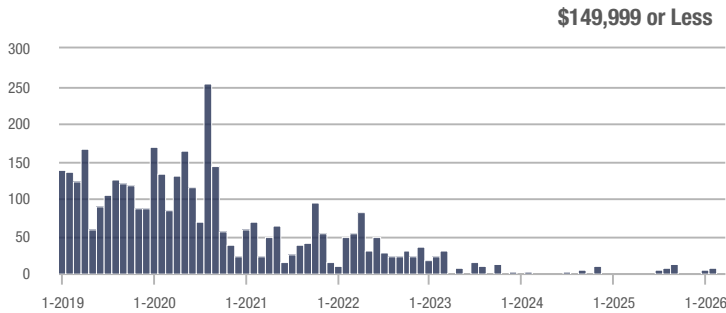
Buyer Interest (Showings/Listings)



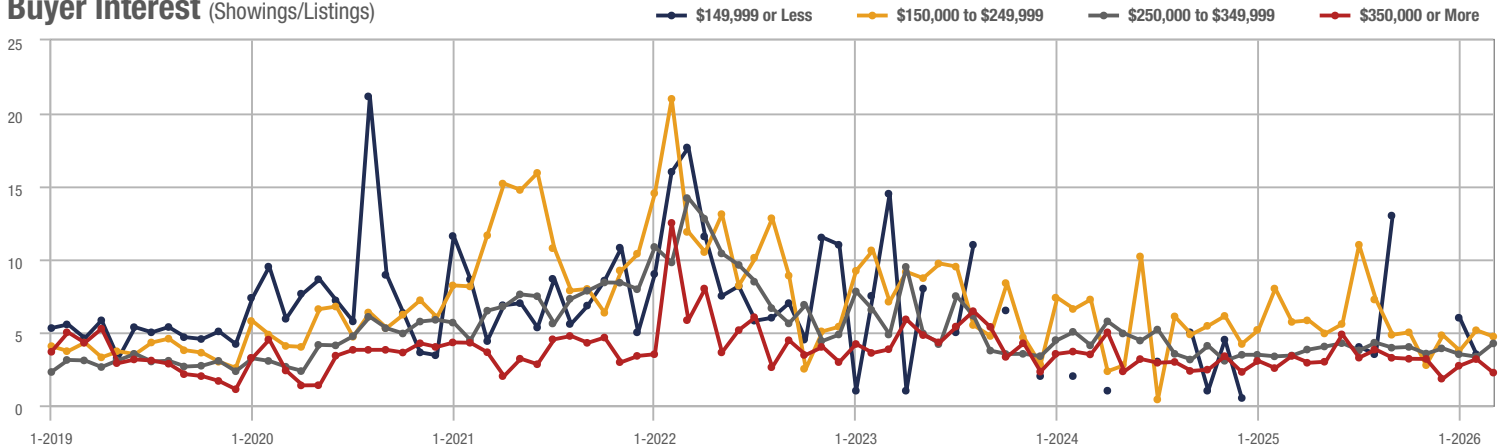
Zip Code 27332

Price Range	Total Showings			Buyer Interest (Showings/Listings)			Managed Listings		
	March 2026	Year-Over-Year Change	Month-Over-Month Change	March 2026	Year-Over-Year Change	Month-Over-Month Change	March 2026	Year-Over-Year Change	Month-Over-Month Change
\$149,999 or Less	0	—	—	—	—	—	0	—	—
\$150,000 to \$249,999	33	- 61.2%	- 15.4%	4.7	- 17.5%	- 8.3%	7	- 56.3%	- 12.5%
\$250,000 to \$349,999	108	- 31.6%	+ 8.0%	4.2	+ 23.5%	+ 27.2%	28	- 53.3%	- 17.6%
\$350,000 or More	105	- 35.6%	- 9.5%	2.2	- 35.3%	- 29.3%	51	- 21.5%	+ 24.4%
Total	246	- 39.4%	- 6.1%	3.1	- 0.7%	- 7.2%	86	- 39.0%	+ 1.2%

Showings



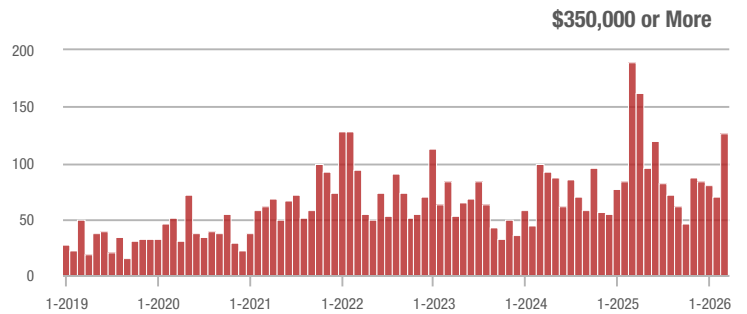
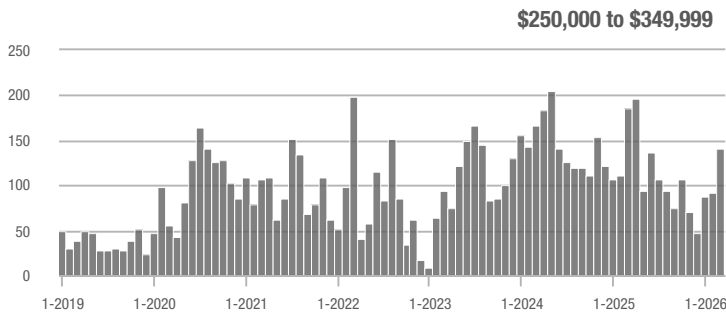
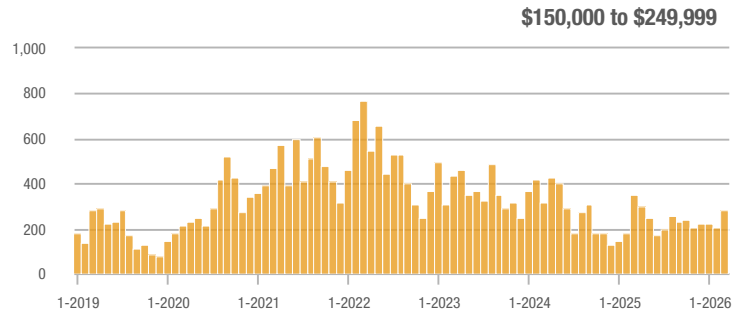
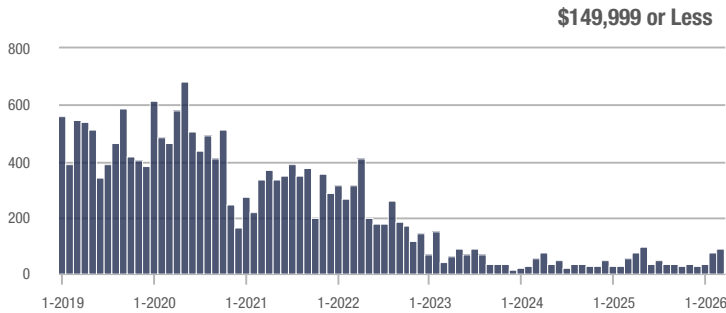
Buyer Interest (Showings/Listings)



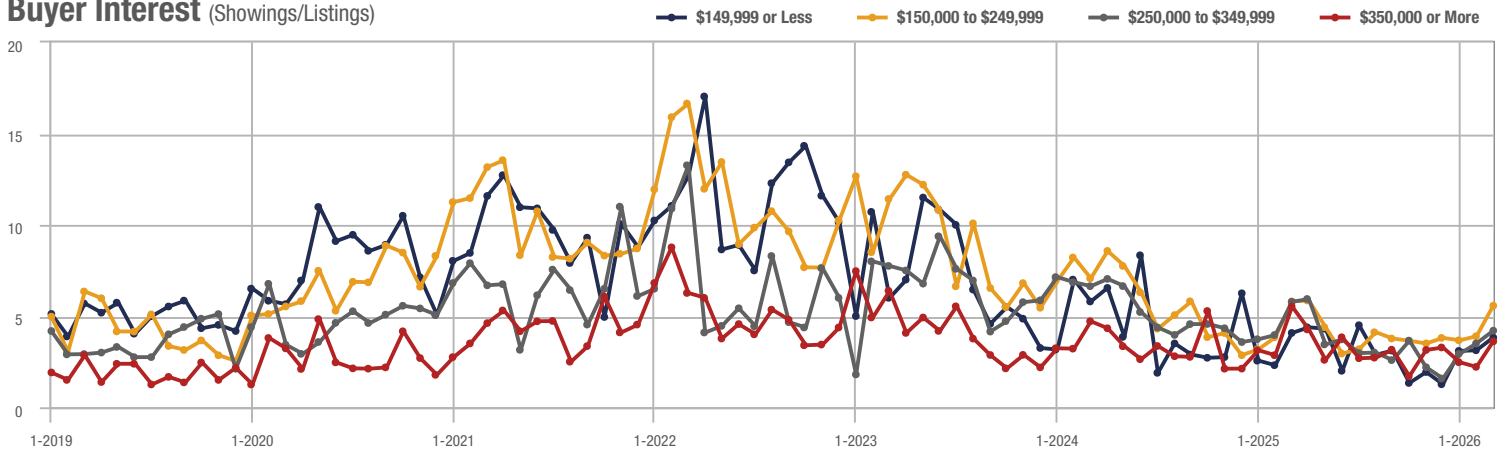
Zip Code 28303

Price Range	Total Showings			Buyer Interest (Showings/Listings)			Managed Listings		
	March 2026	Year-Over-Year Change	Month-Over-Month Change	March 2026	Year-Over-Year Change	Month-Over-Month Change	March 2026	Year-Over-Year Change	Month-Over-Month Change
\$149,999 or Less	89	- 18.1%	+ 23.6%	3.8	- 7.3%	+ 22.4%	21	0.0%	0.0%
\$150,000 to \$249,999	286	- 18.1%	+ 40.2%	5.6	- 3.4%	+ 43.1%	57	- 12.3%	0.0%
\$250,000 to \$349,999	141	- 23.8%	+ 53.3%	4.2	- 27.6%	+ 20.0%	32	- 15.8%	+ 14.3%
\$350,000 or More	126	- 33.3%	+ 80.0%	3.6	- 34.5%	+ 63.2%	36	- 2.7%	+ 9.1%
Total	642	- 17.7%	+ 46.6%	4.5	- 9.2%	+ 39.5%	146	- 9.3%	+ 5.0%

Showings



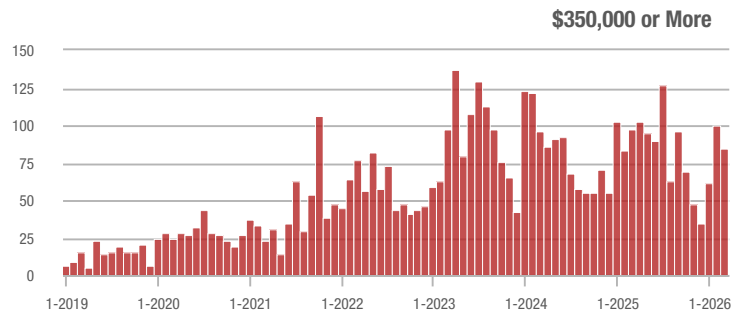
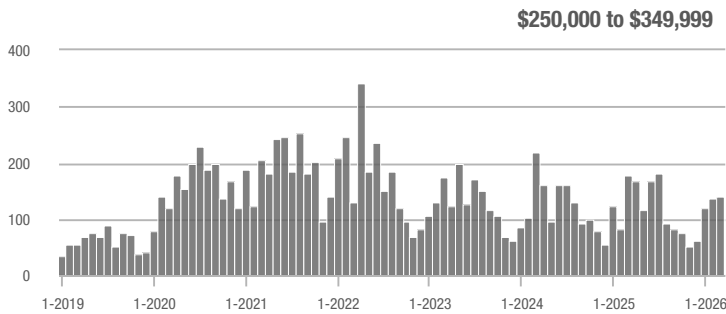
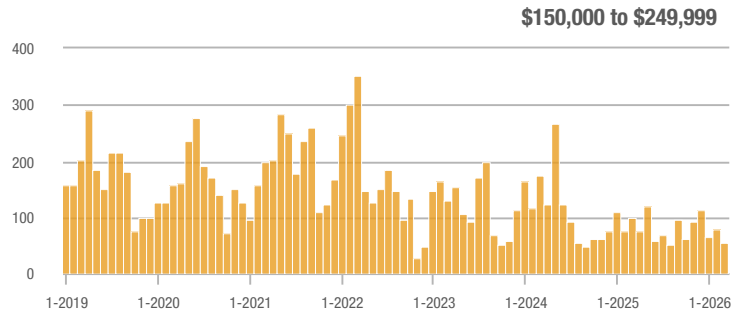
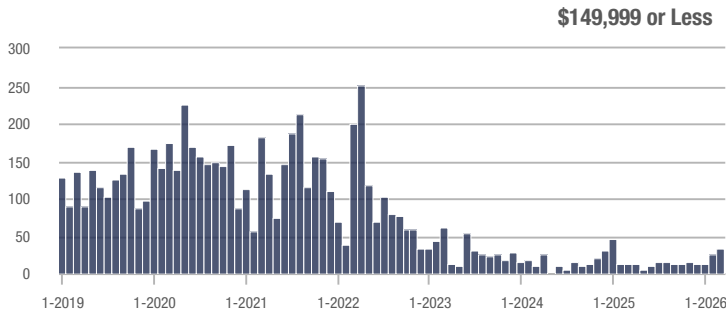
Buyer Interest (Showings/Listings)



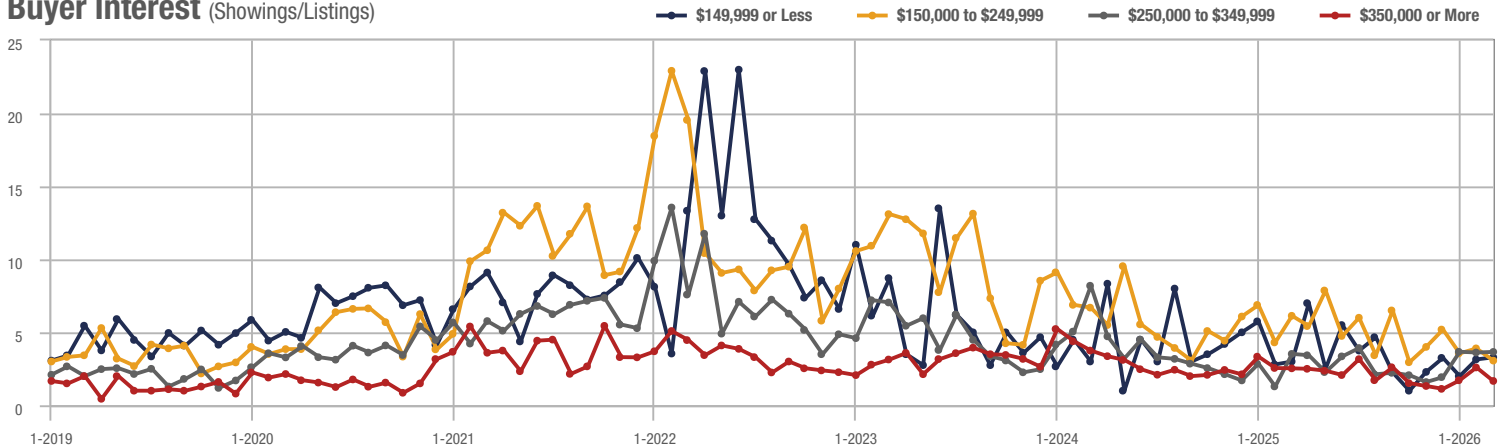
Spring Lake

Price Range	Total Showings			Buyer Interest (Showings/Listings)			Managed Listings		
	March 2026	Year-Over-Year Change	Month-Over-Month Change	March 2026	Year-Over-Year Change	Month-Over-Month Change	March 2026	Year-Over-Year Change	Month-Over-Month Change
\$149,999 or Less	34	- 45.9%	+ 36.0%	3.3	+ 10.0%	+ 4.5%	9	+ 125.0%	0.0%
\$150,000 to \$249,999	53	- 45.9%	- 32.1%	3.1	- 49.2%	- 21.5%	17	0.0%	- 22.7%
\$250,000 to \$349,999	139	- 21.5%	+ 0.7%	3.7	+ 5.7%	+ 1.1%	51	- 23.9%	- 1.9%
\$350,000 or More	84	- 14.3%	- 16.0%	1.7	- 32.0%	- 35.7%	47	+ 20.5%	+ 2.2%
Total	310	- 19.5%	- 9.1%	2.8	- 17.5%	- 5.4%	124	- 2.4%	- 3.9%

Showings



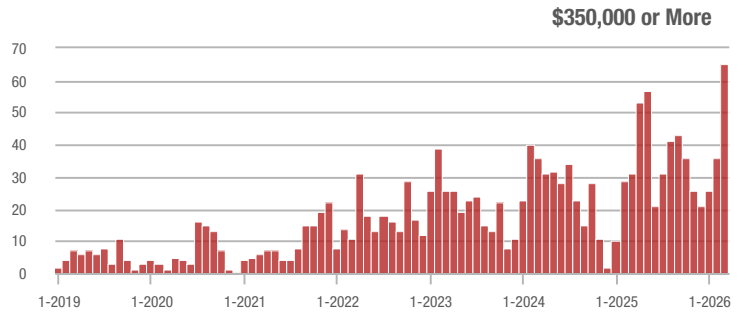
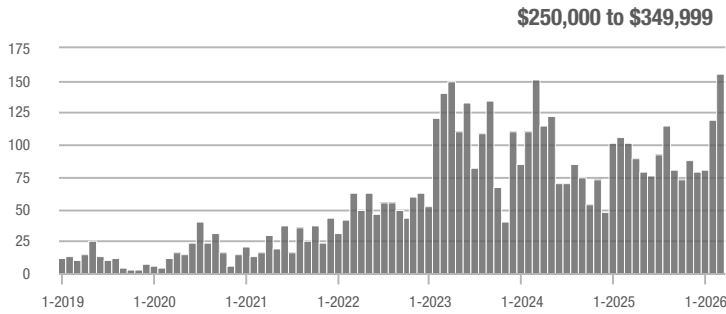
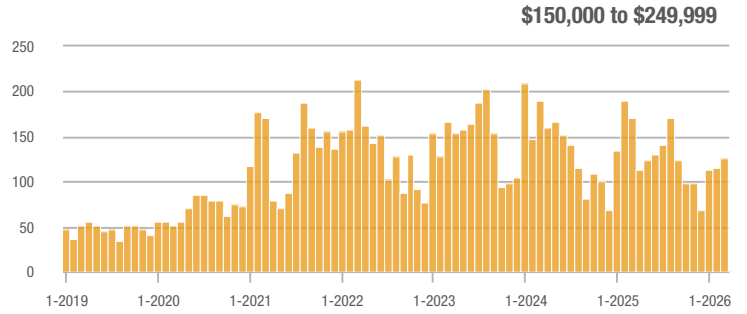
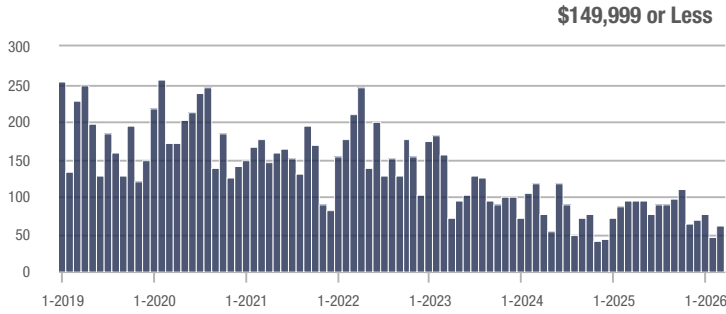
Buyer Interest (Showings/Listings)



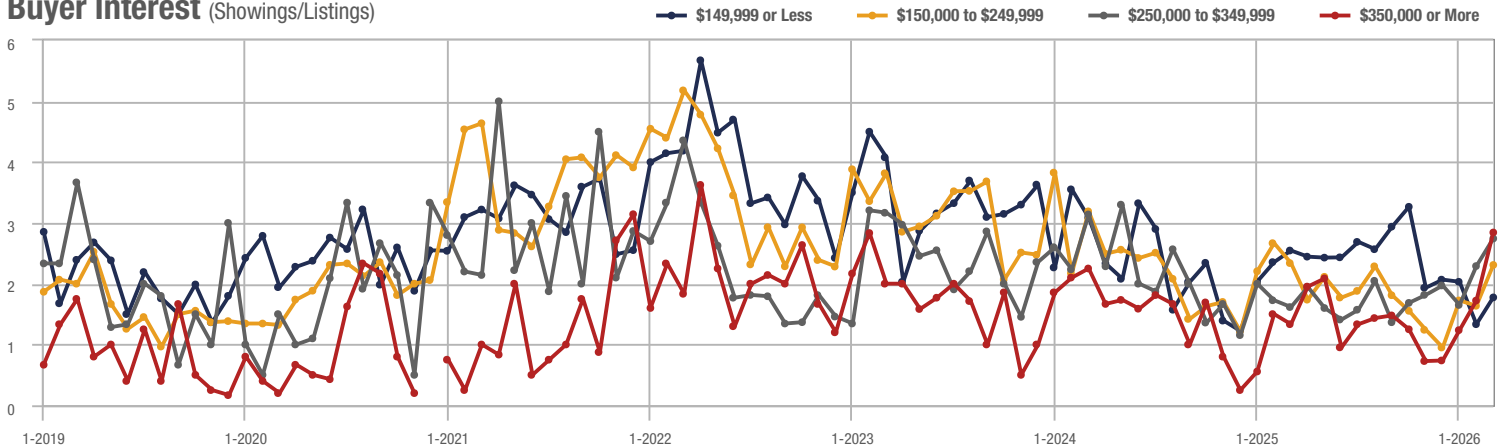
Robeson County

Price Range	Total Showings			Buyer Interest (Showings/Listings)			Managed Listings		
	March 2026	Year-Over-Year Change	Month-Over-Month Change	March 2026	Year-Over-Year Change	Month-Over-Month Change	March 2026	Year-Over-Year Change	Month-Over-Month Change
\$149,999 or Less	61	- 26.7%	+ 32.6%	1.8	- 28.0%	+ 33.1%	43	- 6.5%	+ 4.9%
\$150,000 to \$249,999	126	- 26.7%	+ 9.6%	2.3	0.0%	+ 41.0%	67	- 20.2%	- 6.9%
\$250,000 to \$349,999	155	+ 52.0%	+ 30.3%	2.7	+ 68.8%	+ 19.8%	63	- 11.3%	- 11.3%
\$350,000 or More	65	+ 109.7%	+ 80.6%	2.8	+ 115.4%	+ 65.0%	29	+ 3.6%	0.0%
Total	407	+ 1.5%	+ 28.8%	2.4	+ 15.1%	+ 35.8%	202	- 11.8%	- 5.2%

Showings



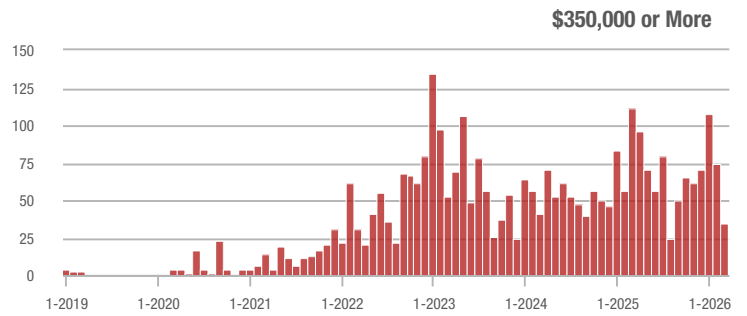
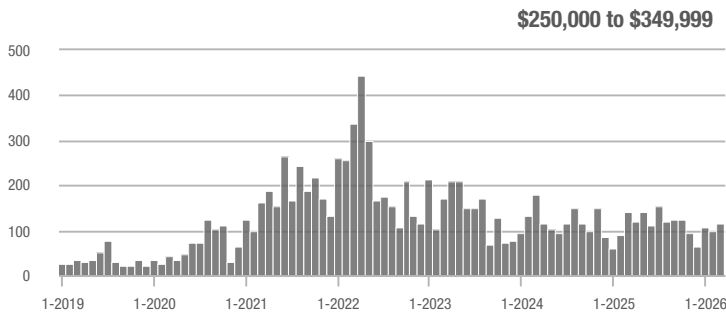
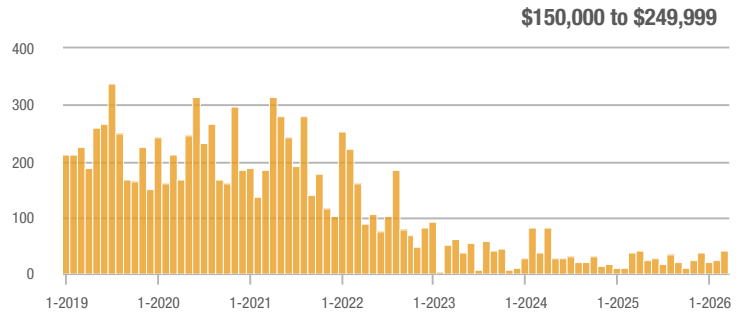
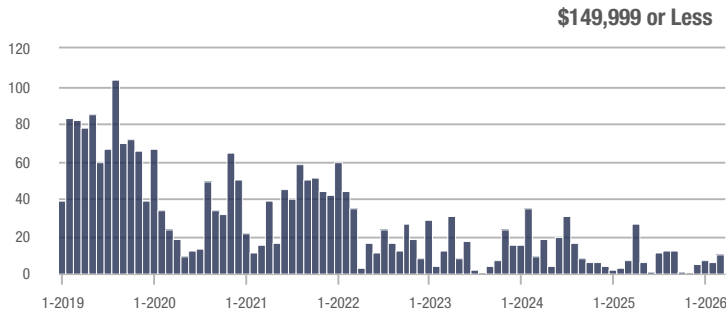
Buyer Interest (Showings/Listings)



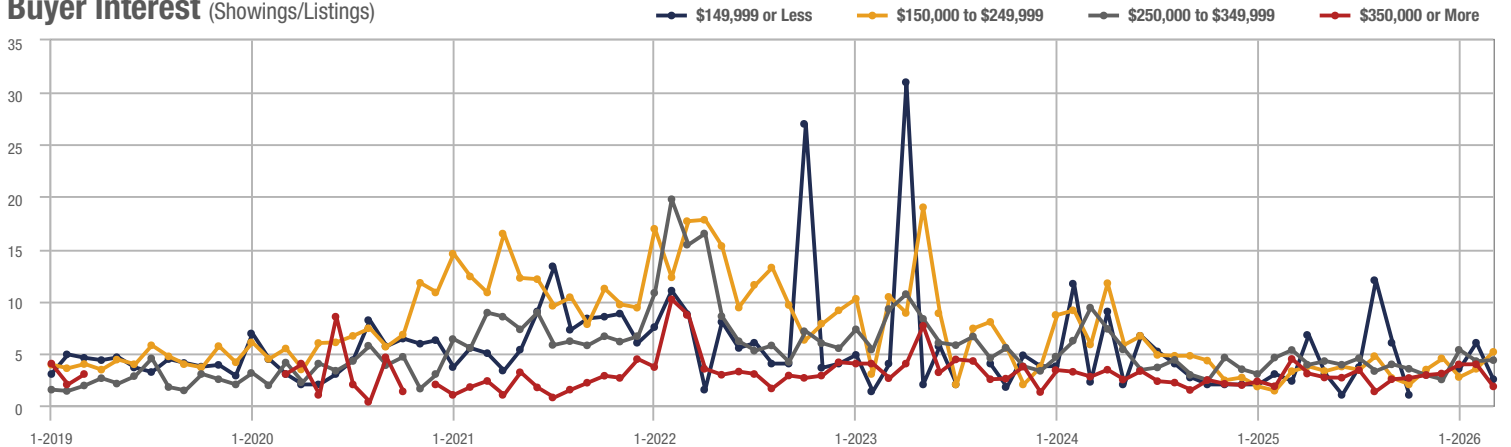
Cameron

Price Range	Total Showings			Buyer Interest (Showings/Listings)			Managed Listings		
	March 2026	Year-Over-Year Change	Month-Over-Month Change	March 2026	Year-Over-Year Change	Month-Over-Month Change	March 2026	Year-Over-Year Change	Month-Over-Month Change
\$149,999 or Less	10	+ 10.8%	+ 66.7%	2.5	+ 8.7%	- 58.3%	4	+ 33.3%	+ 300.0%
\$150,000 to \$249,999	41	+ 10.8%	+ 64.0%	5.1	+ 54.5%	+ 46.4%	8	- 33.3%	+ 14.3%
\$250,000 to \$349,999	114	- 18.0%	+ 15.2%	4.3	- 18.9%	+ 2.2%	28	- 6.7%	+ 12.0%
\$350,000 or More	34	- 69.6%	- 54.1%	1.8	- 59.1%	- 54.0%	21	- 50.0%	- 8.7%
Total	199	- 32.5%	- 2.5%	3.5	- 3.8%	- 10.4%	61	- 29.9%	+ 8.9%

Showings



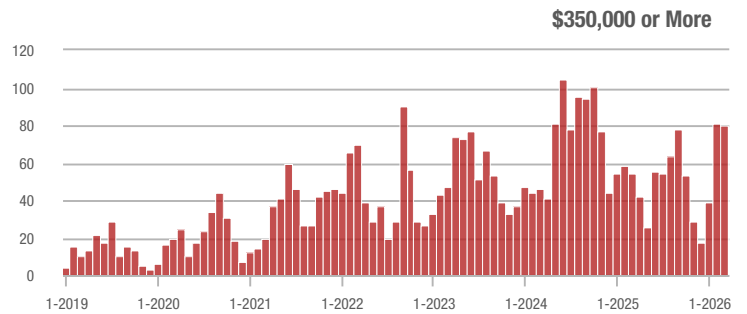
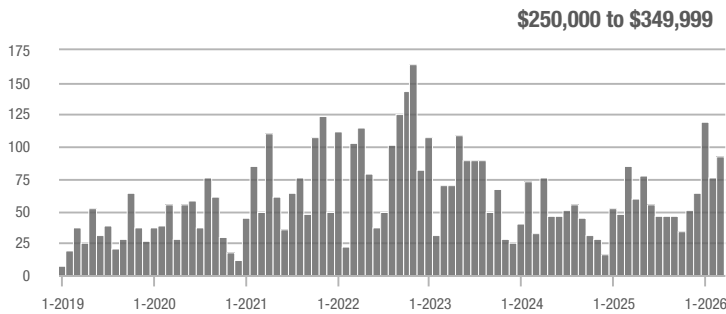
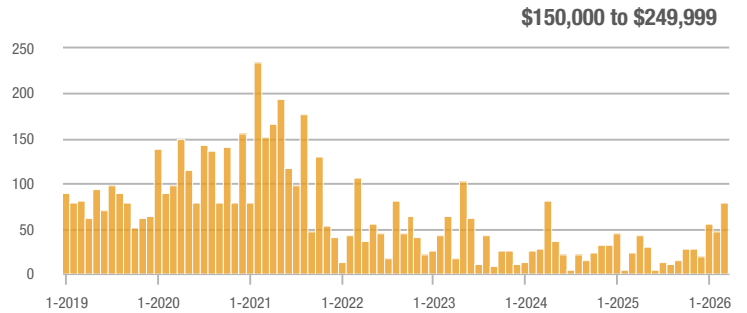
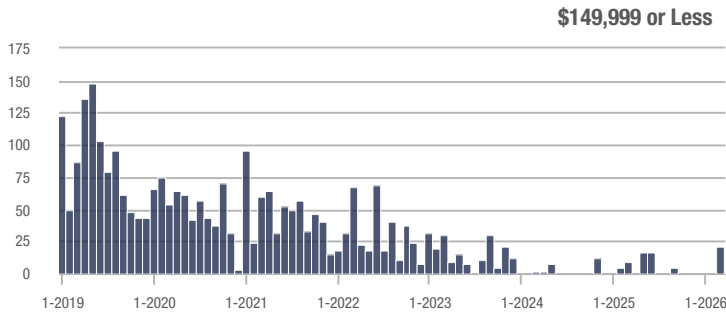
Buyer Interest (Showings/Listings)



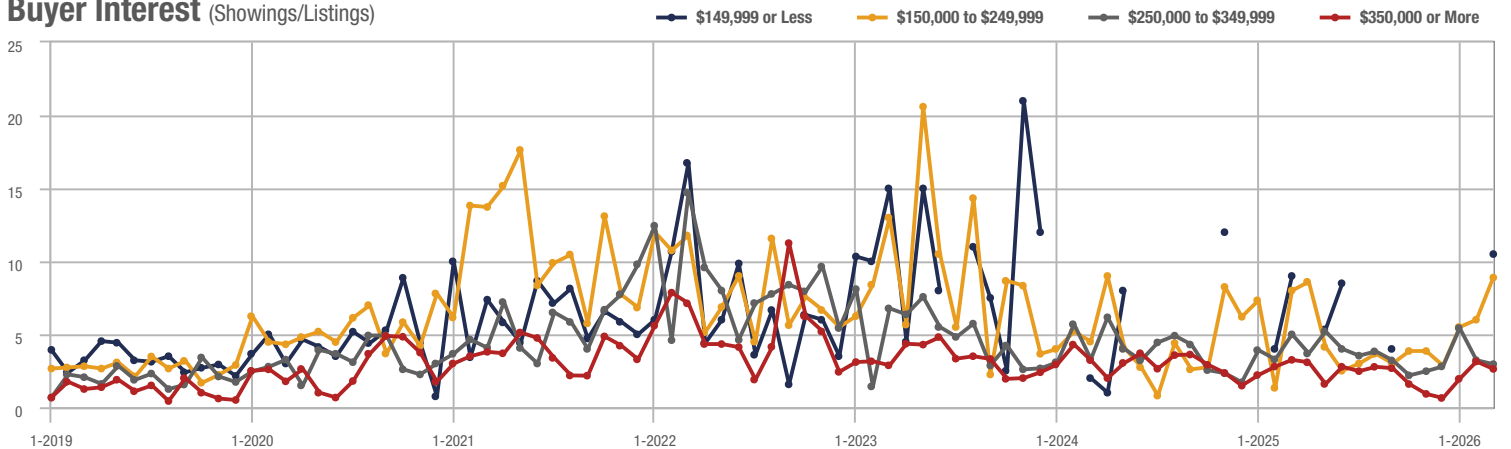
Zip Code 27330

Price Range	Total Showings			Buyer Interest (Showings/Listings)			Managed Listings		
	March 2026	Year-Over-Year Change	Month-Over-Month Change	March 2026	Year-Over-Year Change	Month-Over-Month Change	March 2026	Year-Over-Year Change	Month-Over-Month Change
\$149,999 or Less	21	+ 233.3%	—	10.5	+ 16.7%	—	2	+ 100.0%	—
\$150,000 to \$249,999	80	+ 233.3%	+ 66.7%	8.9	+ 11.3%	+ 48.1%	9	+ 200.0%	+ 12.5%
\$250,000 to \$349,999	92	+ 8.2%	+ 21.1%	3.0	- 40.0%	- 8.4%	35	+ 94.4%	+ 2.9%
\$350,000 or More	80	+ 48.1%	- 1.2%	2.6	- 21.2%	- 16.2%	37	+ 60.9%	+ 8.8%
Total	273	+ 58.7%	+ 33.2%	3.9	- 13.9%	+ 21.9%	83	+ 84.4%	+ 9.2%

Showings



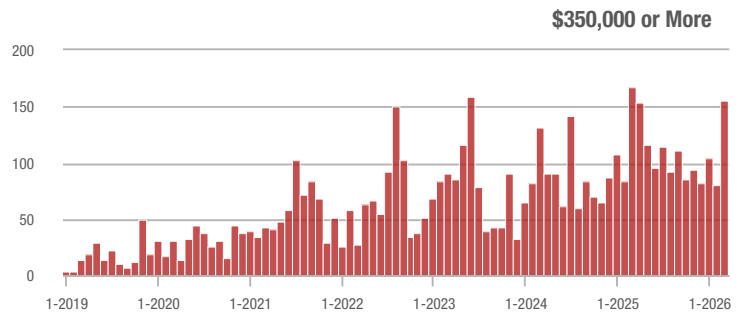
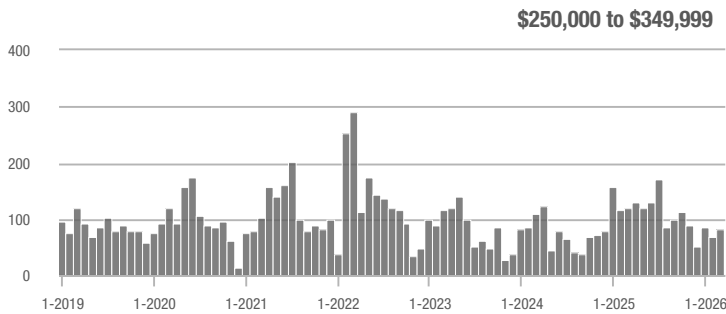
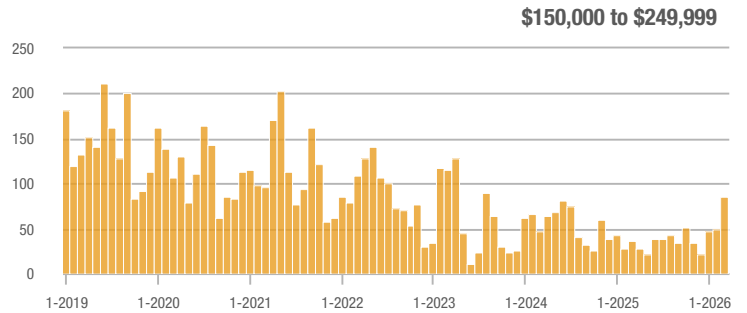
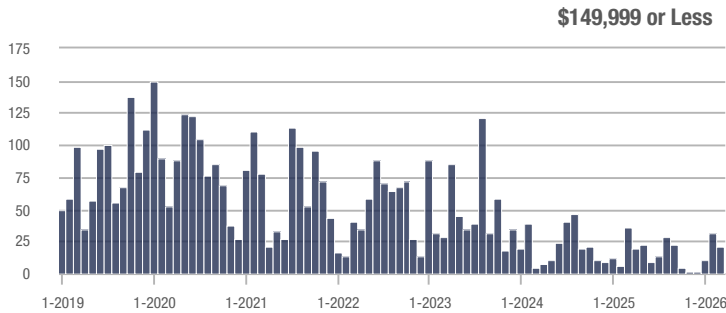
Buyer Interest (Showings/Listings)



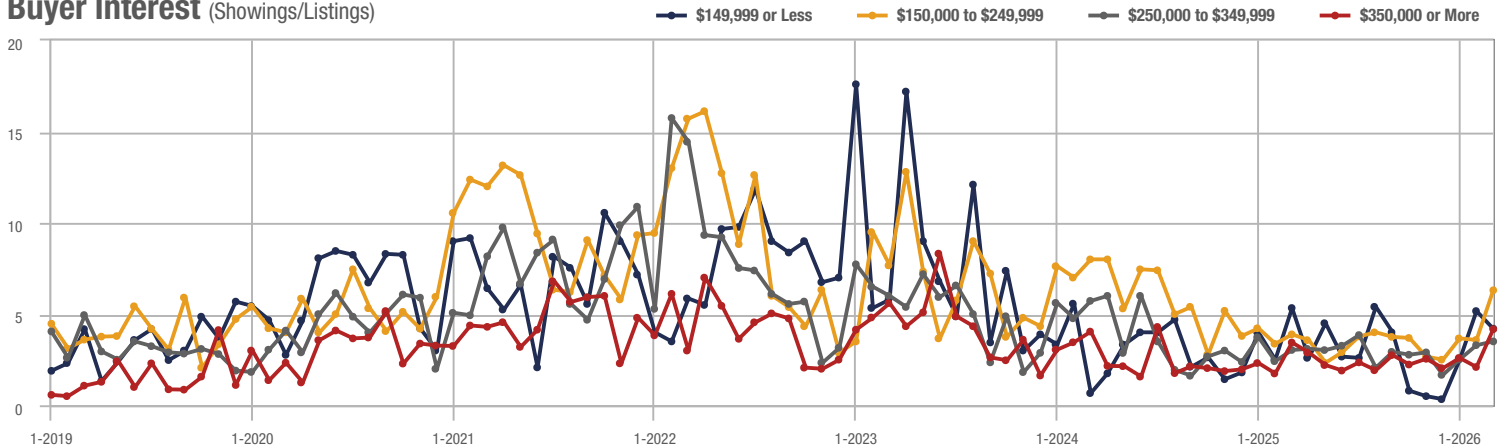
Zip Code 28312

Price Range	Total Showings			Buyer Interest (Showings/Listings)			Managed Listings		
	March 2026	Year-Over-Year Change	Month-Over-Month Change	March 2026	Year-Over-Year Change	Month-Over-Month Change	March 2026	Year-Over-Year Change	Month-Over-Month Change
\$149,999 or Less	21	+ 138.9%	- 32.3%	4.2	- 20.8%	- 18.7%	5	- 37.5%	- 28.6%
\$150,000 to \$249,999	86	+ 138.9%	+ 75.5%	6.3	+ 61.5%	+ 76.0%	15	+ 50.0%	- 6.3%
\$250,000 to \$349,999	82	- 31.1%	+ 18.8%	3.5	+ 16.7%	+ 6.3%	26	- 46.9%	+ 13.0%
\$350,000 or More	155	- 7.7%	+ 93.8%	4.2	+ 23.5%	+ 98.9%	41	- 31.7%	+ 5.1%
Total	344	- 4.2%	+ 50.2%	4.4	+ 39.9%	+ 46.8%	87	- 31.5%	+ 2.4%

Showings



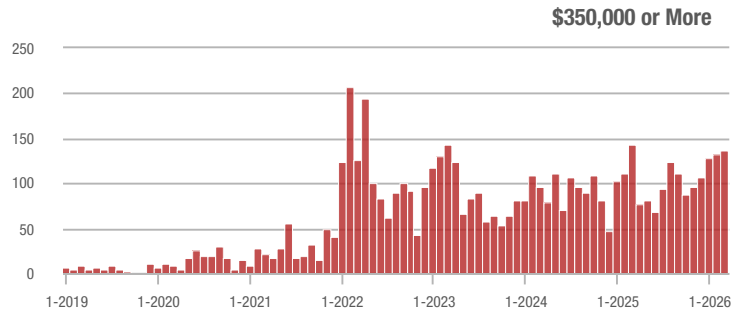
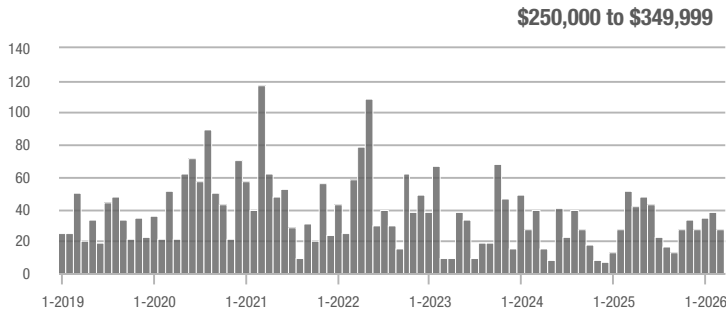
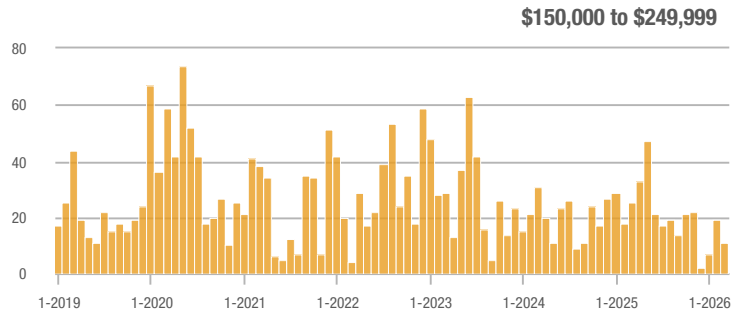
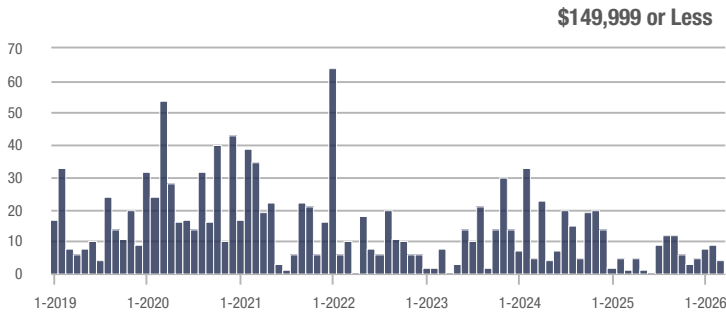
Buyer Interest (Showings/Listings)



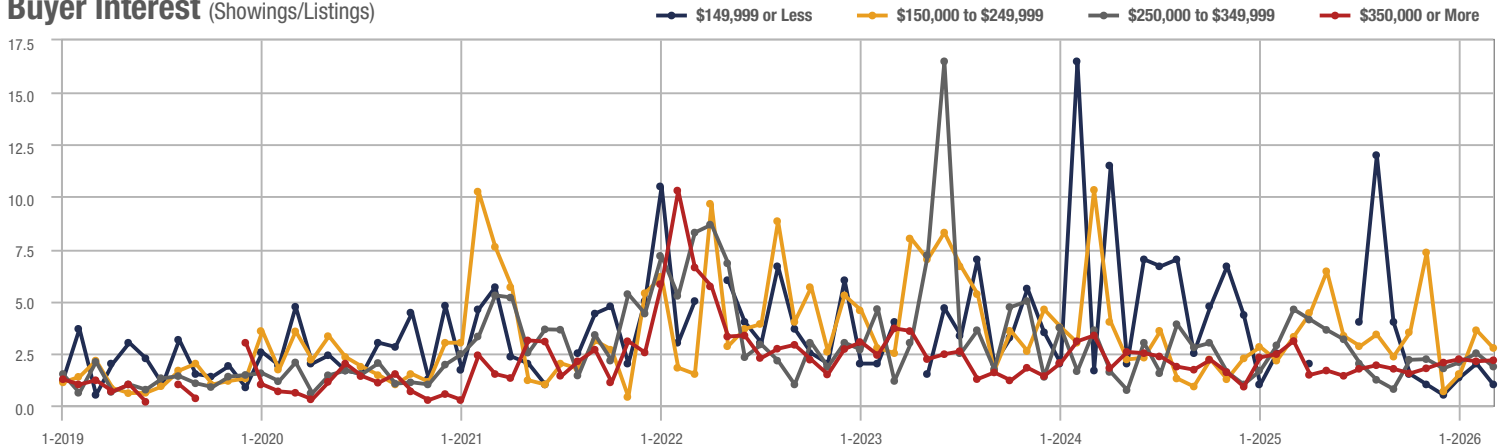
Moore County

Price Range	Total Showings			Buyer Interest (Showings/Listings)			Managed Listings		
	March 2026	Year-Over-Year Change	Month-Over-Month Change	March 2026	Year-Over-Year Change	Month-Over-Month Change	March 2026	Year-Over-Year Change	Month-Over-Month Change
\$149,999 or Less	4	- 56.0%	- 55.6%	1.0	—	- 50.0%	4	+ 100.0%	- 20.0%
\$150,000 to \$249,999	11	- 56.0%	- 42.1%	2.8	- 15.2%	- 23.6%	7	- 22.2%	- 12.5%
\$250,000 to \$349,999	27	- 47.1%	- 28.9%	1.9	- 58.7%	- 25.7%	24	+ 20.0%	+ 4.3%
\$350,000 or More	136	- 5.6%	+ 3.0%	2.2	- 29.0%	+ 2.3%	88	+ 4.8%	- 12.0%
Total	178	- 19.5%	- 10.1%	2.1	- 24.7%	- 0.6%	123	+ 7.0%	- 9.6%

Showings



Buyer Interest (Showings/Listings)

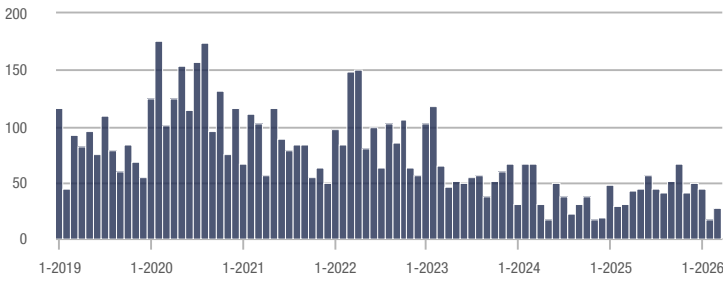


Lumberton

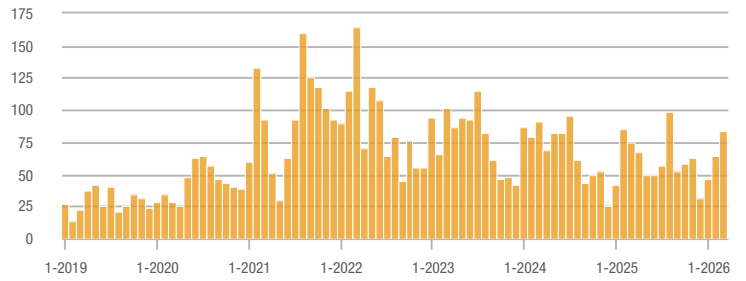
Price Range	Total Showings			Buyer Interest (Showings/Listings)			Managed Listings		
	March 2026	Year-Over-Year Change	Month-Over-Month Change	March 2026	Year-Over-Year Change	Month-Over-Month Change	March 2026	Year-Over-Year Change	Month-Over-Month Change
\$149,999 or Less	28	+ 12.0%	+ 64.7%	1.5	- 16.7%	+ 26.9%	20	+ 5.3%	+ 25.0%
\$150,000 to \$249,999	84	+ 12.0%	+ 31.3%	3.3	+ 17.9%	+ 58.1%	28	- 15.2%	- 9.7%
\$250,000 to \$349,999	47	+ 123.8%	+ 38.2%	3.2	+ 166.7%	+ 47.2%	19	- 5.0%	- 5.0%
\$350,000 or More	37	+ 27.6%	+ 131.3%	2.3	+ 43.8%	+ 81.3%	18	- 21.7%	+ 5.9%
Total	196	+ 25.6%	+ 49.6%	2.6	+ 40.4%	+ 47.9%	85	- 10.5%	+ 1.2%

Showings

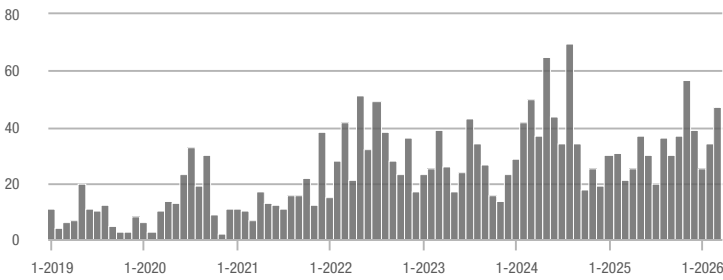
\$149,999 or Less



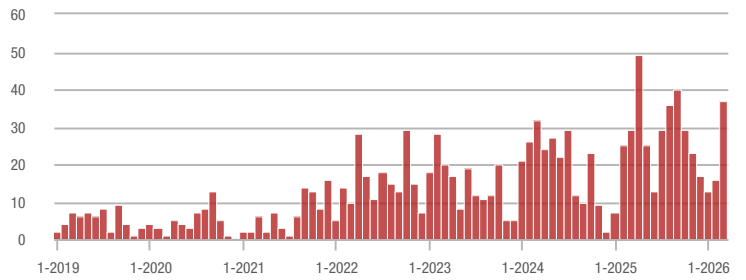
\$150,000 to \$249,999



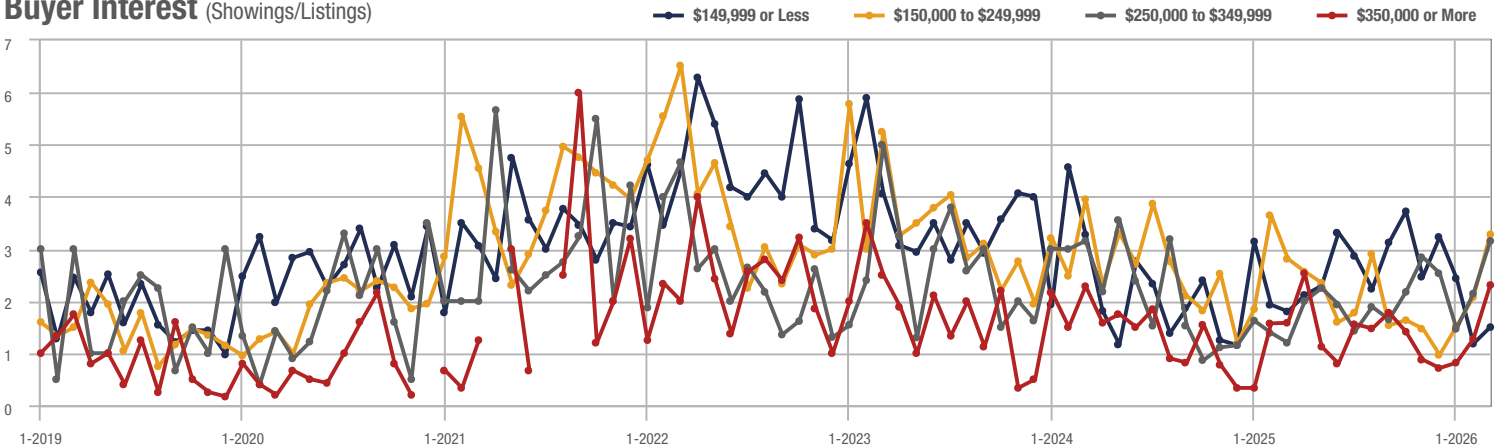
\$250,000 to \$349,999



\$350,000 or More



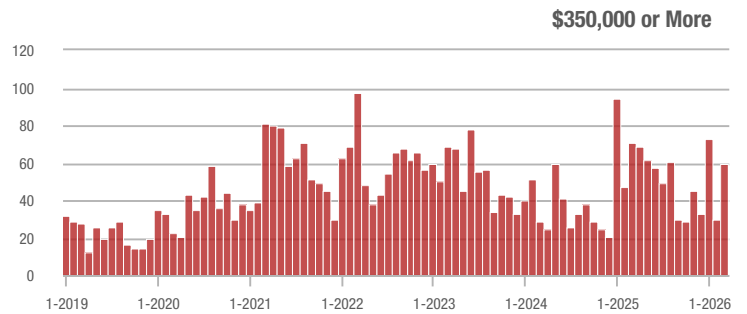
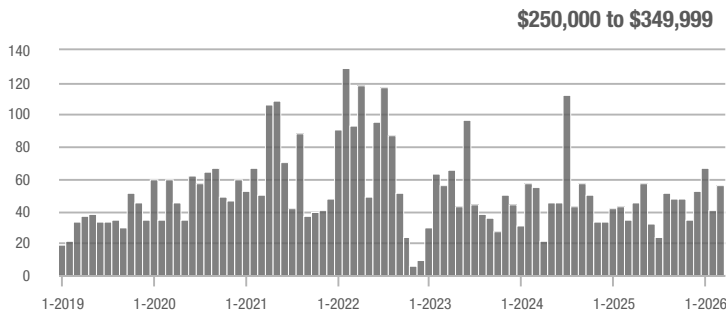
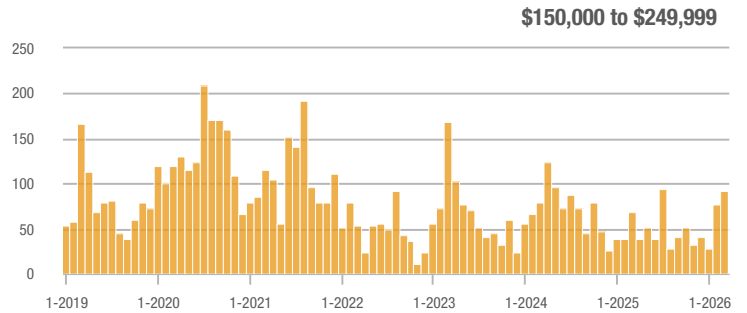
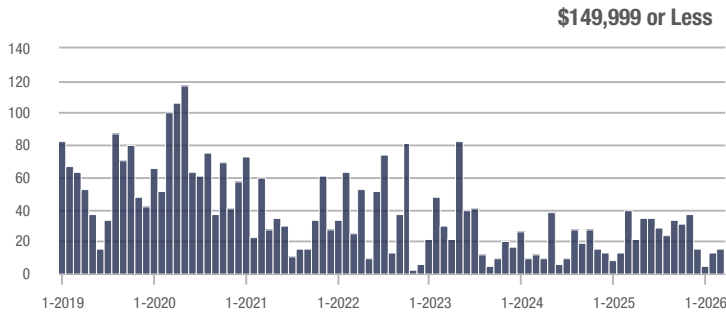
Buyer Interest (Showings/Listings)



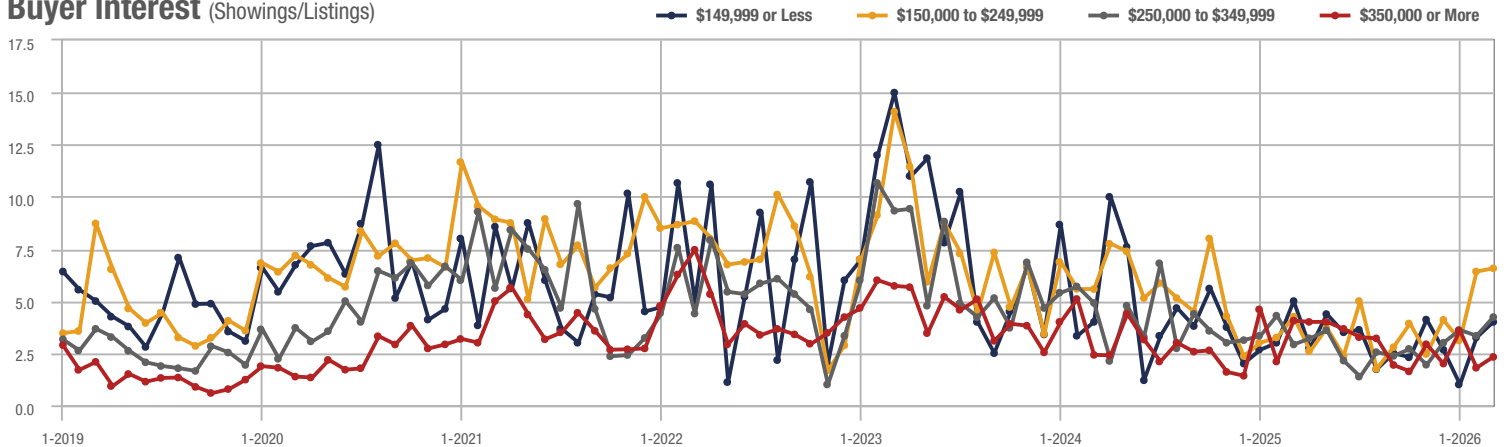
Zip Code 28305

Price Range	Total Showings			Buyer Interest (Showings/Listings)			Managed Listings		
	March 2026	Year-Over-Year Change	Month-Over-Month Change	March 2026	Year-Over-Year Change	Month-Over-Month Change	March 2026	Year-Over-Year Change	Month-Over-Month Change
\$149,999 or Less	16	+ 35.3%	+ 23.1%	4.0	- 20.0%	+ 23.1%	4	- 55.6%	0.0%
\$150,000 to \$249,999	92	+ 35.3%	+ 19.5%	6.6	+ 53.5%	+ 2.4%	14	- 12.5%	+ 16.7%
\$250,000 to \$349,999	56	+ 60.0%	+ 36.6%	4.2	+ 44.8%	+ 26.9%	14	+ 7.7%	+ 7.7%
\$350,000 or More	59	- 16.9%	+ 96.7%	2.3	- 43.9%	+ 28.9%	29	+ 52.6%	+ 52.6%
Total	223	+ 4.2%	+ 38.5%	3.9	- 2.6%	+ 9.0%	61	+ 7.0%	+ 27.1%

Showings



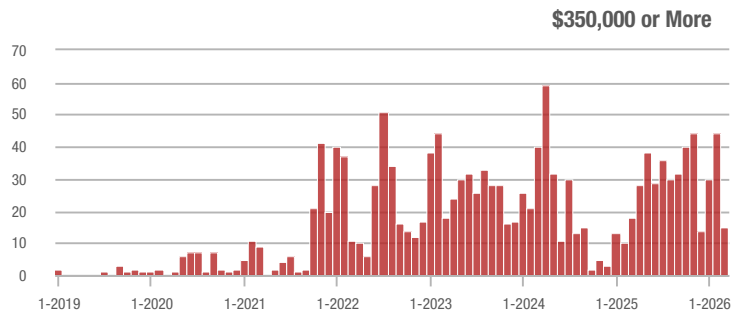
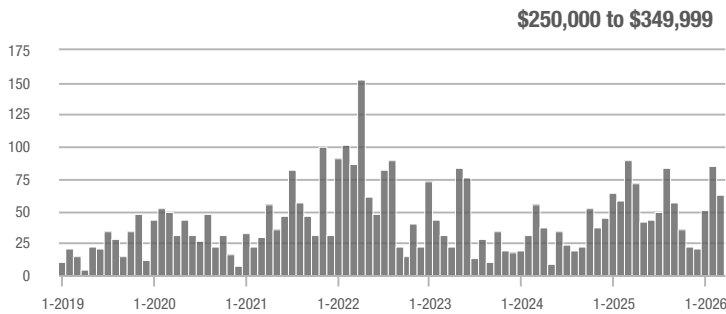
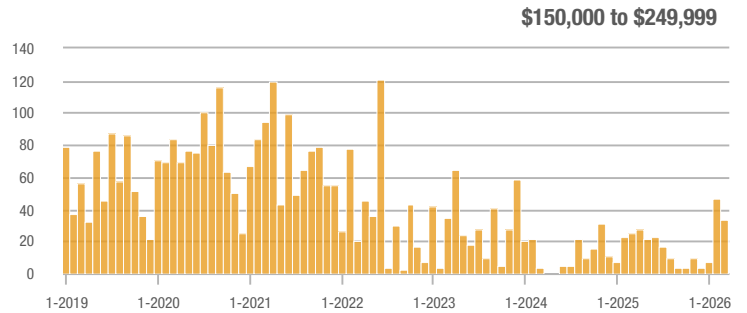
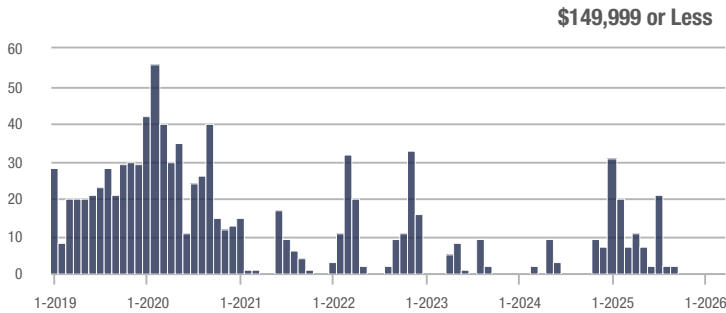
Buyer Interest (Showings/Listings)



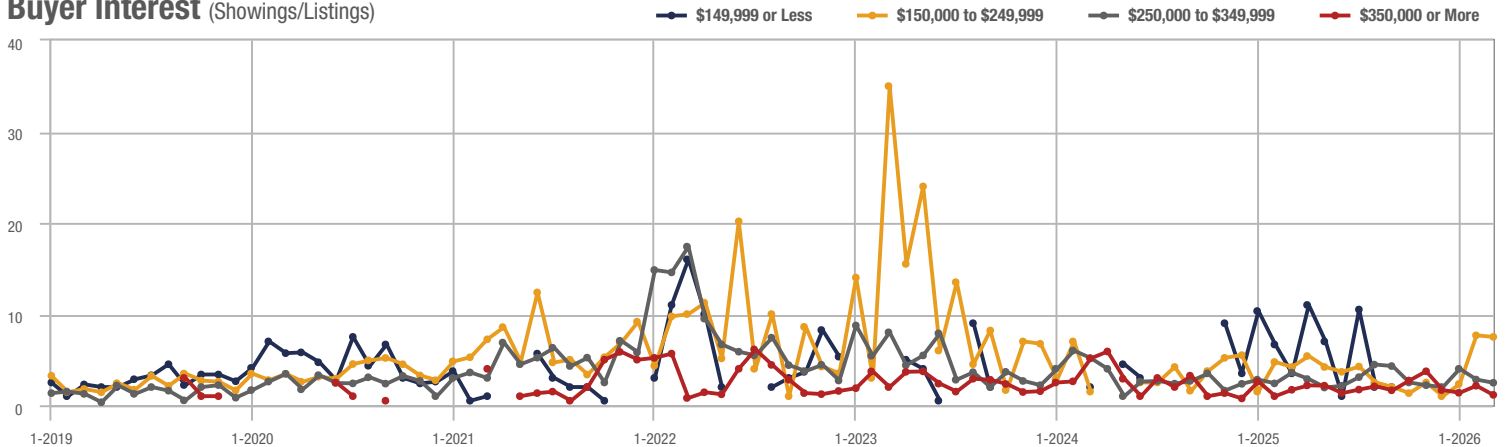
Lillington

Price Range	Total Showings			Buyer Interest (Showings/Listings)			Managed Listings		
	March 2026	Year-Over-Year Change	Month-Over-Month Change	March 2026	Year-Over-Year Change	Month-Over-Month Change	March 2026	Year-Over-Year Change	Month-Over-Month Change
\$149,999 or Less	0	—	—	—	—	—	0	—	—
\$150,000 to \$249,999	33	+ 32.0%	- 29.8%	7.5	+ 78.6%	- 2.2%	5	- 16.7%	- 28.6%
\$250,000 to \$349,999	63	- 29.2%	- 25.9%	2.5	- 30.6%	- 12.5%	43	+ 10.3%	- 17.3%
\$350,000 or More	15	- 16.7%	- 65.9%	1.1	- 35.3%	- 46.7%	21	+ 40.0%	- 30.0%
Total	111	- 20.1%	- 36.9%	2.9	- 28.2%	- 18.7%	69	+ 11.3%	- 22.5%

Showings



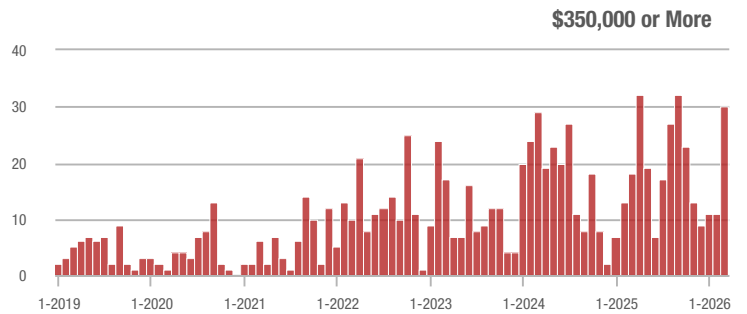
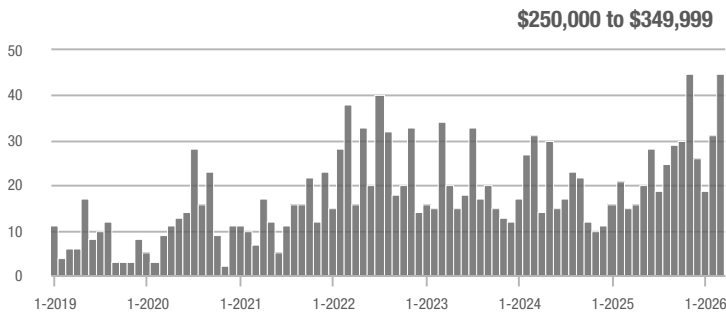
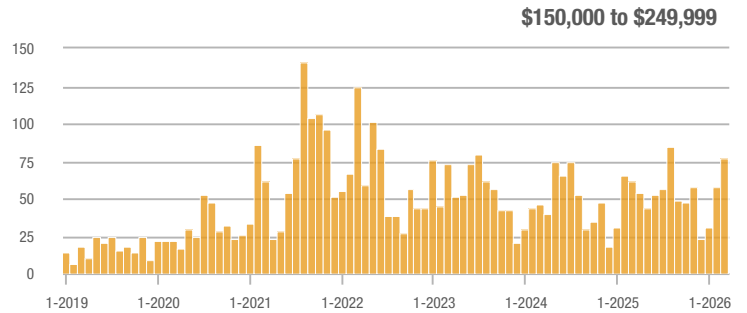
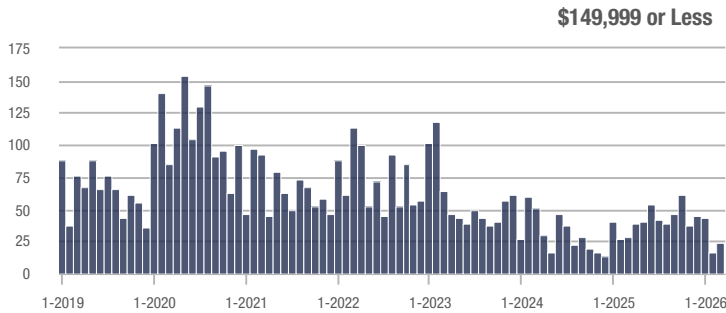
Buyer Interest (Showings/Listings)



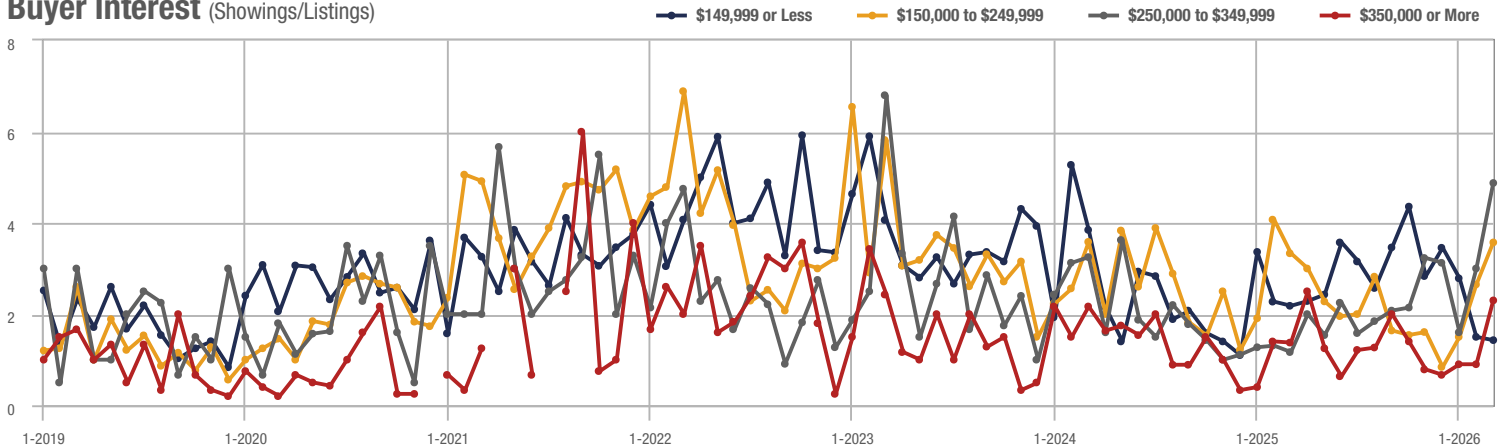
Zip Code 28358

Price Range	Total Showings			Buyer Interest (Showings/Listings)			Managed Listings		
	March 2026	Year-Over-Year Change	Month-Over-Month Change	March 2026	Year-Over-Year Change	Month-Over-Month Change	March 2026	Year-Over-Year Change	Month-Over-Month Change
\$149,999 or Less	24	+ 26.2%	+ 50.0%	1.4	- 36.4%	- 4.8%	18	+ 20.0%	+ 38.5%
\$150,000 to \$249,999	77	+ 26.2%	+ 32.8%	3.6	+ 9.1%	+ 34.8%	24	+ 14.3%	0.0%
\$250,000 to \$349,999	45	+ 200.0%	+ 45.2%	4.9	+ 308.3%	+ 62.5%	14	0.0%	- 6.7%
\$350,000 or More	30	+ 66.7%	+ 172.7%	2.3	+ 64.3%	+ 155.6%	15	+ 7.1%	- 6.3%
Total	176	+ 44.3%	+ 51.7%	3.0	+ 30.0%	+ 45.3%	71	+ 10.9%	+ 4.4%

Showings



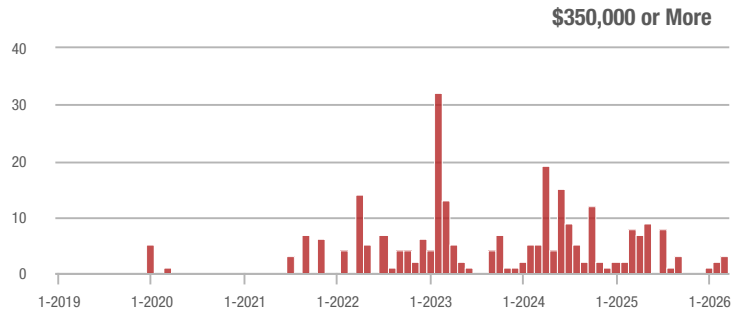
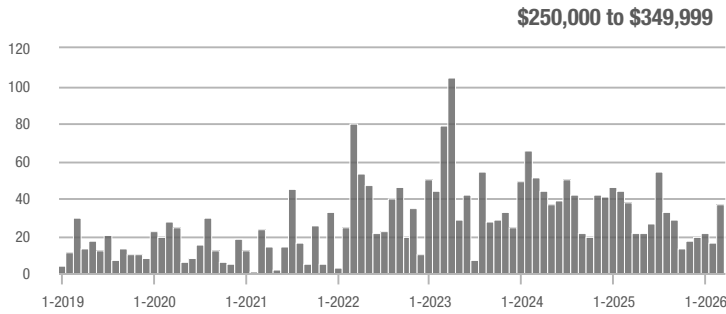
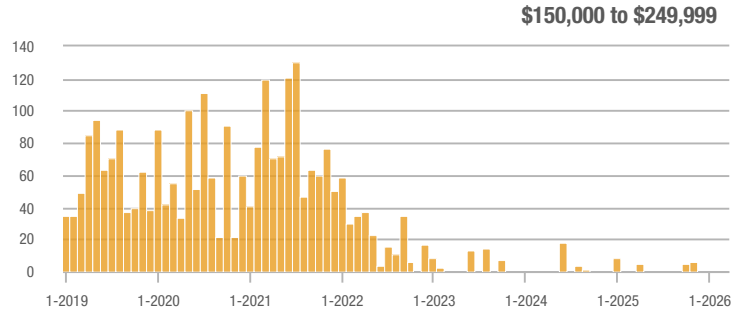
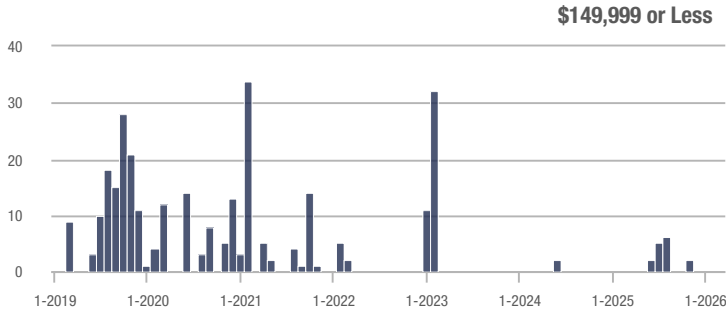
Buyer Interest (Showings/Listings)



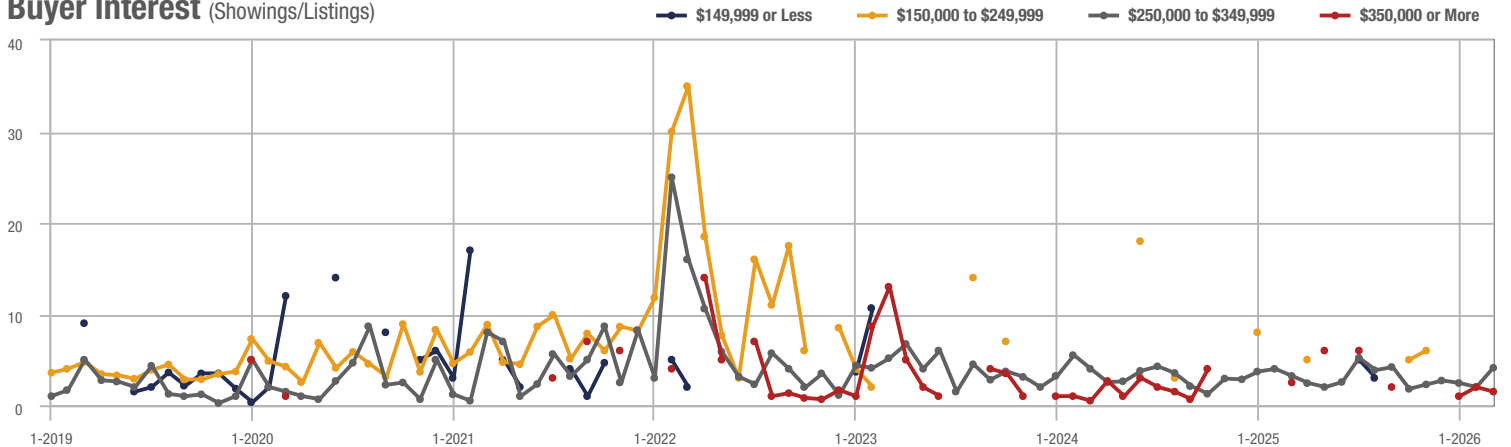
Bunnlevel

Price Range	Total Showings			Buyer Interest (Showings/Listings)			Managed Listings		
	March 2026	Year-Over-Year Change	Month-Over-Month Change	March 2026	Year-Over-Year Change	Month-Over-Month Change	March 2026	Year-Over-Year Change	Month-Over-Month Change
\$149,999 or Less	0	—	—	—	—	—	0	—	—
\$150,000 to \$249,999	0	—	—	—	—	—	0	—	—
\$250,000 to \$349,999	37	- 2.6%	+ 131.3%	4.1	+ 28.1%	+ 105.6%	10	- 23.1%	+ 42.9%
\$350,000 or More	3	- 62.5%	+ 50.0%	1.5	- 40.0%	- 25.0%	2	- 60.0%	+ 100.0%
Total	40	- 13.0%	+ 122.2%	3.6	+ 30.4%	+ 48.1%	12	- 33.3%	+ 50.0%

Showings



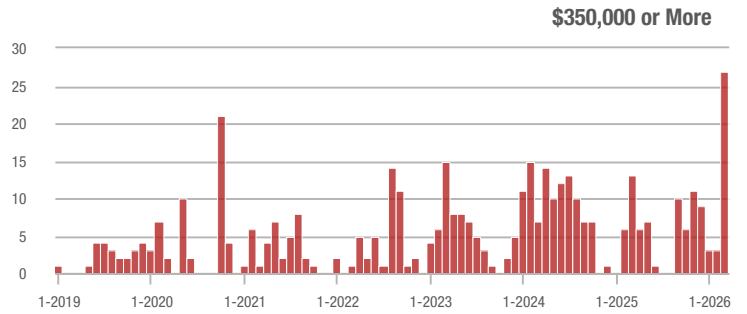
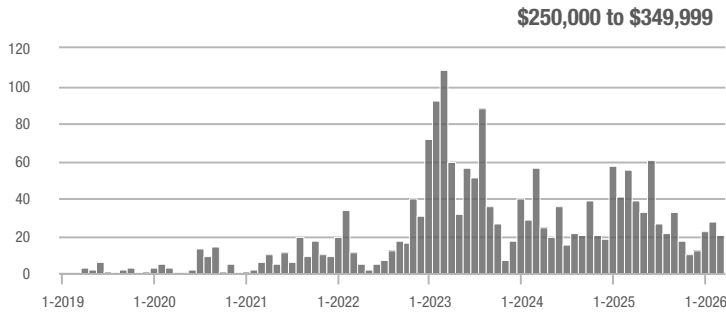
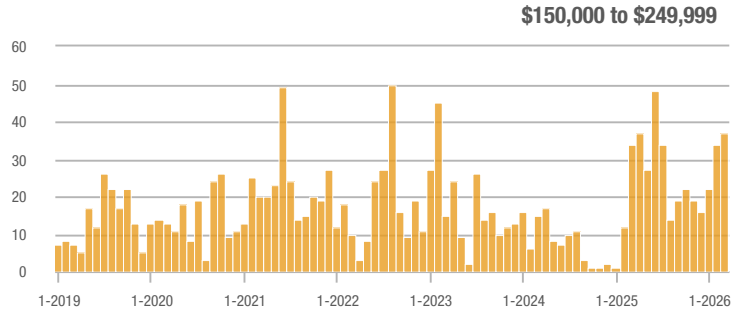
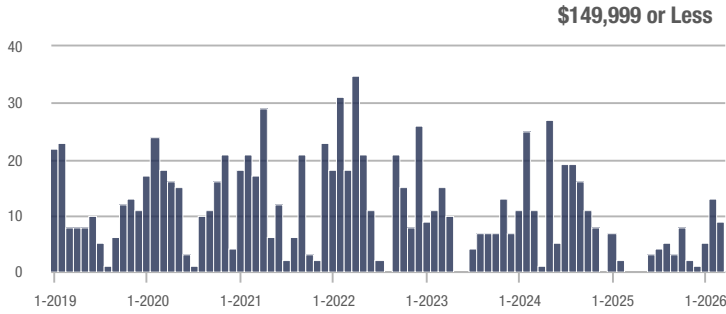
Buyer Interest (Showings/Listings)



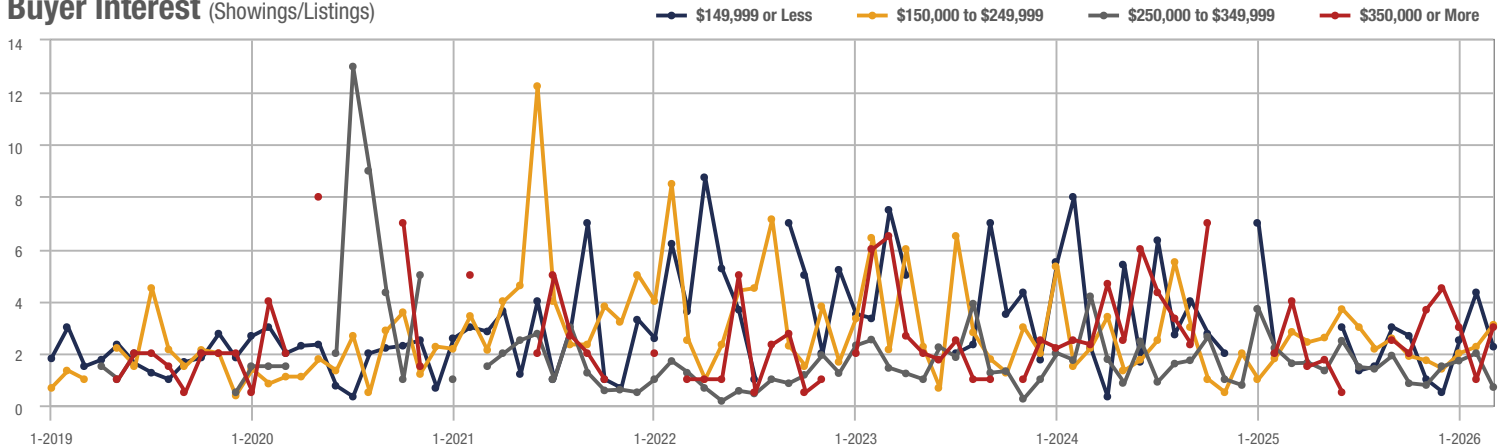
Sampson County

Price Range	Total Showings			Buyer Interest (Showings/Listings)			Managed Listings		
	March 2026	Year-Over-Year Change	Month-Over-Month Change	March 2026	Year-Over-Year Change	Month-Over-Month Change	March 2026	Year-Over-Year Change	Month-Over-Month Change
\$149,999 or Less	9	—	- 30.8%	2.3	—	- 48.1%	4	—	+ 33.3%
\$150,000 to \$249,999	37	+ 8.8%	+ 8.8%	3.1	+ 10.7%	+ 37.4%	14	- 12.5%	- 17.6%
\$250,000 to \$349,999	21	- 61.8%	- 25.0%	0.7	- 56.3%	- 65.0%	21	- 44.7%	+ 5.0%
\$350,000 or More	27	+ 107.7%	+ 800.0%	3.0	- 25.0%	+ 200.0%	11	+ 175.0%	+ 83.3%
Total	94	- 7.8%	+ 20.5%	2.2	+ 6.9%	+ 10.9%	50	- 13.8%	+ 8.7%

Showings



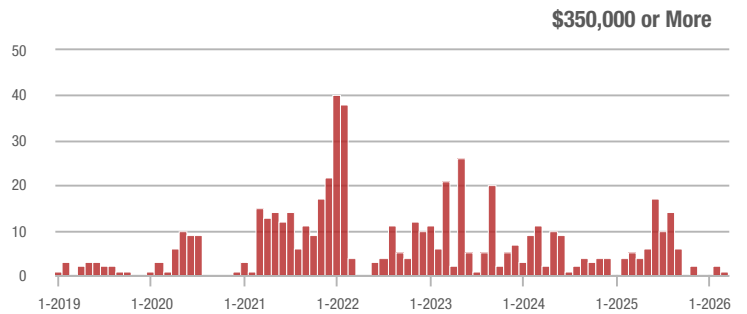
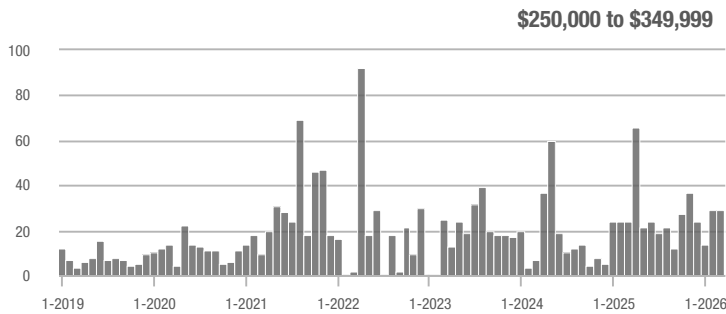
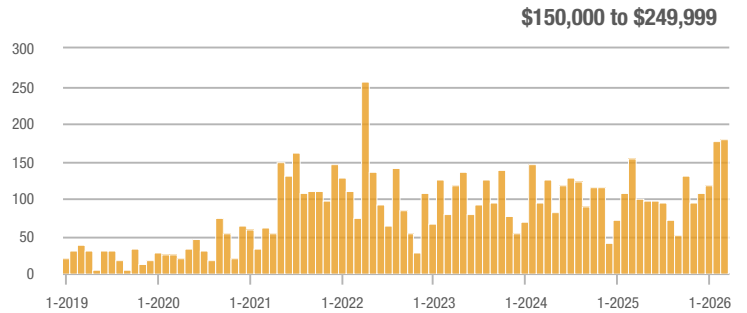
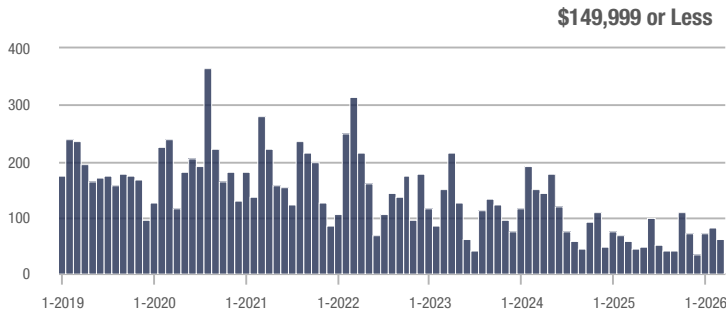
Buyer Interest (Showings/Listings)



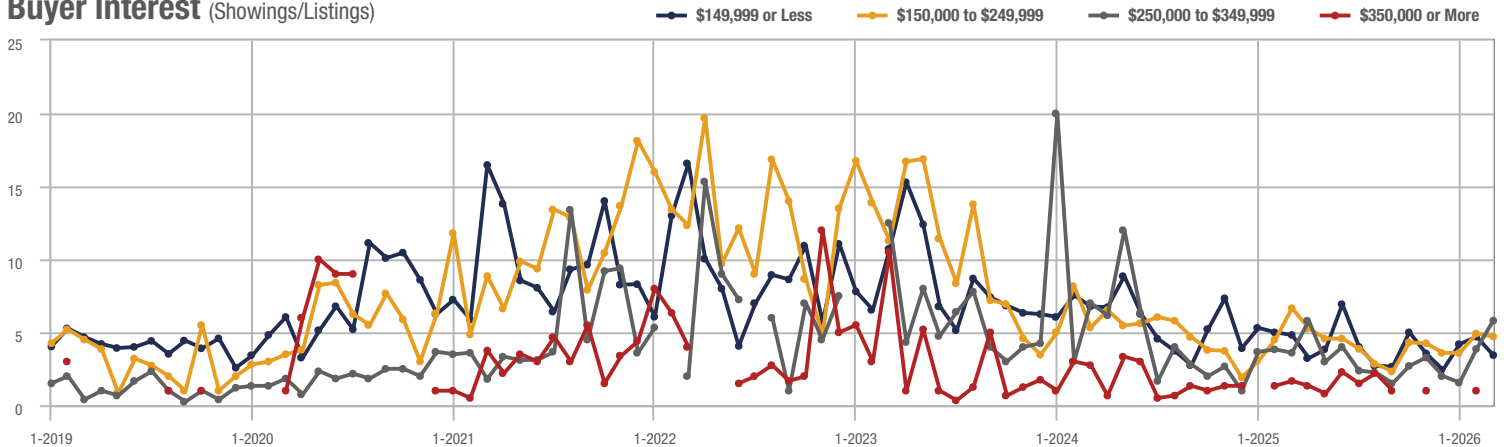
Zip Code 28301

Price Range	Total Showings			Buyer Interest (Showings/Listings)			Managed Listings		
	March 2026	Year-Over-Year Change	Month-Over-Month Change	March 2026	Year-Over-Year Change	Month-Over-Month Change	March 2026	Year-Over-Year Change	Month-Over-Month Change
\$149,999 or Less	60	+ 16.1%	- 25.9%	3.4	- 29.2%	- 27.0%	20	+ 25.0%	- 4.8%
\$150,000 to \$249,999	180	+ 16.1%	+ 1.1%	4.7	- 29.9%	- 4.2%	39	+ 50.0%	+ 2.6%
\$250,000 to \$349,999	29	+ 20.8%	0.0%	5.8	+ 61.1%	+ 50.4%	6	- 25.0%	- 25.0%
\$350,000 or More	1	- 80.0%	- 50.0%	—	—	—	3	- 25.0%	0.0%
Total	270	+ 11.1%	- 6.9%	4.4	- 11.8%	- 4.2%	68	+ 25.9%	- 2.9%

Showings



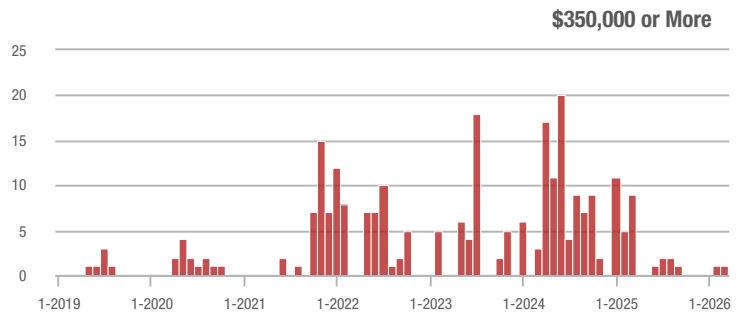
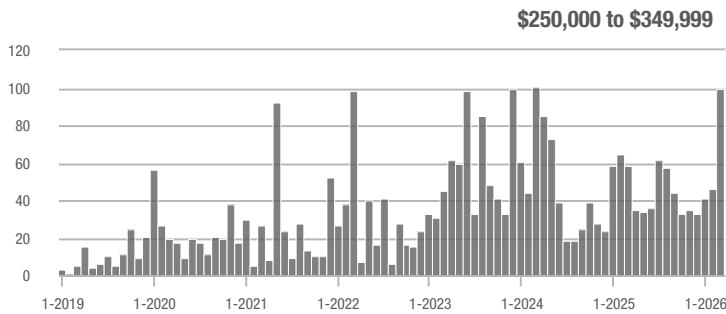
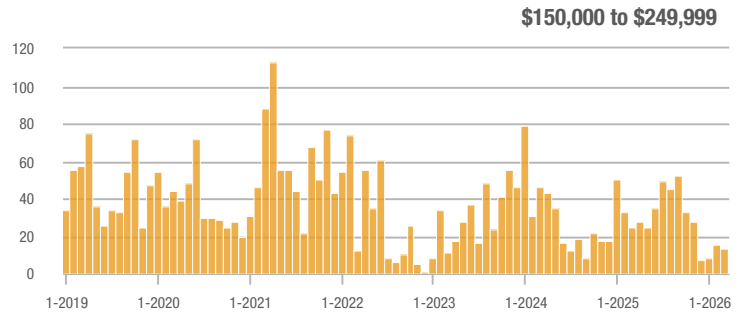
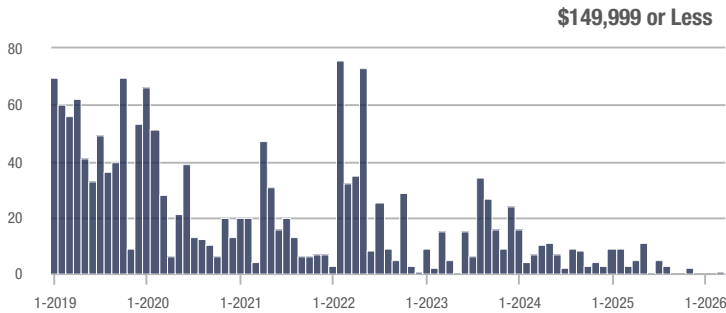
Buyer Interest (Showings/Listings)



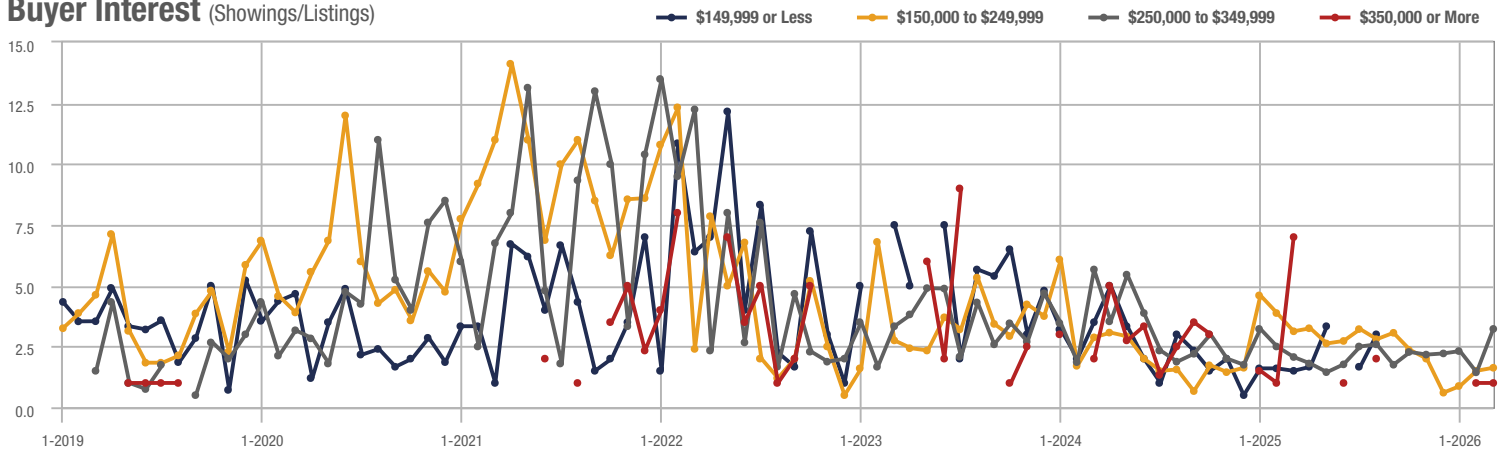
Parkton

Price Range	Total Showings			Buyer Interest (Showings/Listings)			Managed Listings		
	March 2026	Year-Over-Year Change	Month-Over-Month Change	March 2026	Year-Over-Year Change	Month-Over-Month Change	March 2026	Year-Over-Year Change	Month-Over-Month Change
\$149,999 or Less	1	- 48.0%	—	—	—	—	2	- 33.3%	+ 100.0%
\$150,000 to \$249,999	13	- 48.0%	- 13.3%	1.6	- 48.4%	+ 8.3%	12	+ 9.1%	0.0%
\$250,000 to \$349,999	99	+ 70.7%	+ 115.2%	3.2	+ 52.4%	+ 124.2%	31	+ 14.8%	- 6.1%
\$350,000 or More	1	- 88.9%	0.0%	1.0	- 85.7%	0.0%	1	- 50.0%	0.0%
Total	114	+ 20.0%	+ 83.9%	2.6	+ 12.2%	+ 87.9%	46	+ 7.0%	- 2.1%

Showings



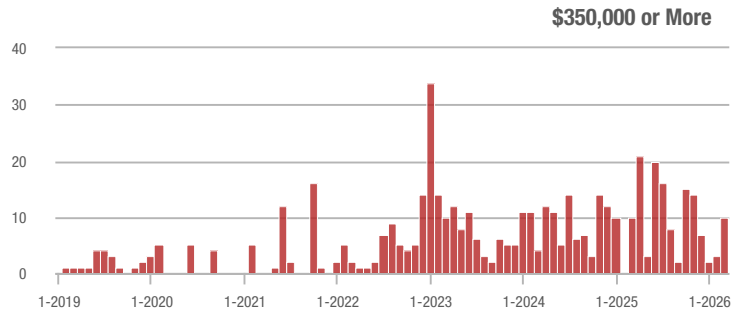
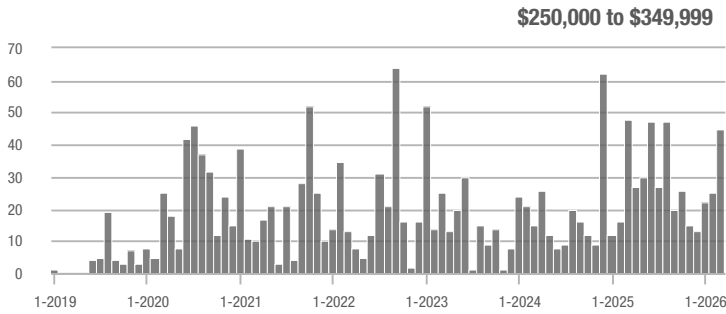
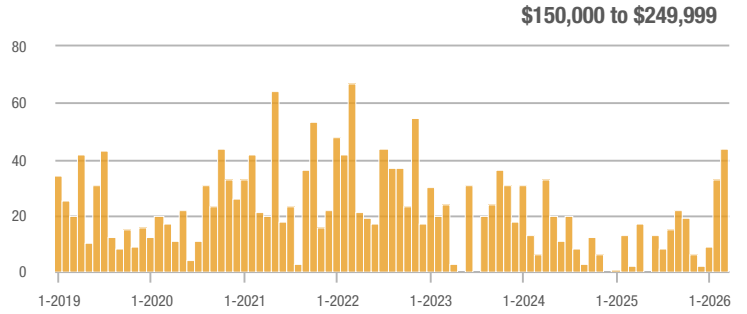
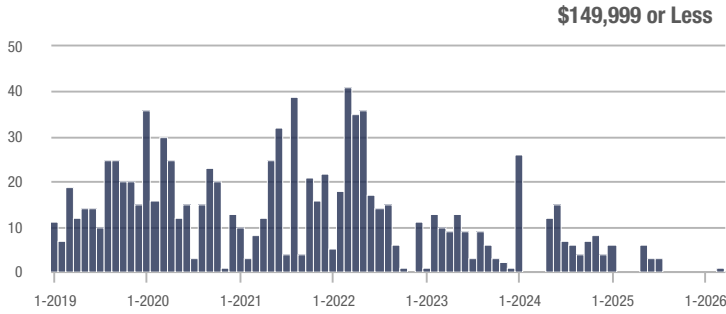
Buyer Interest (Showings/Listings)



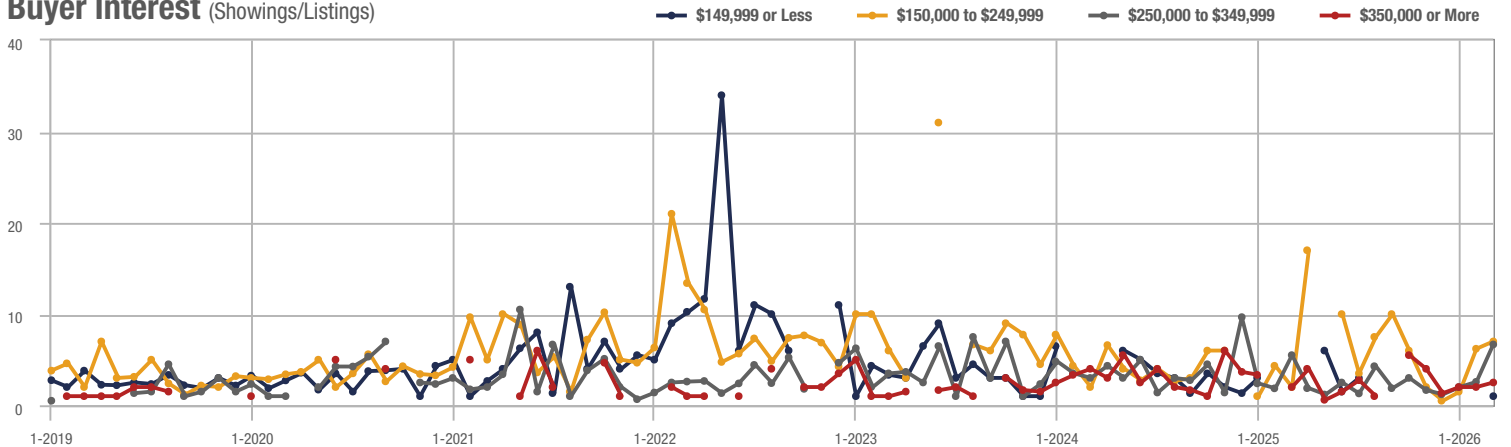
Stedman

Price Range	Total Showings			Buyer Interest (Showings/Listings)			Managed Listings		
	March 2026	Year-Over-Year Change	Month-Over-Month Change	March 2026	Year-Over-Year Change	Month-Over-Month Change	March 2026	Year-Over-Year Change	Month-Over-Month Change
\$149,999 or Less	1	—	—	1.0	—	—	1	—	—
\$150,000 to \$249,999	44	+ 2,100.0%	+ 33.3%	7.0	+ 250.0%	+ 12.9%	7	+ 600.0%	+ 16.7%
\$250,000 to \$349,999	45	- 6.3%	+ 80.0%	6.7	+ 21.8%	+ 159.3%	7	- 46.2%	- 22.2%
\$350,000 or More	10	0.0%	+ 233.3%	2.5	+ 25.0%	+ 25.0%	5	- 37.5%	+ 150.0%
Total	100	+ 66.7%	+ 63.9%	5.5	+ 83.3%	+ 39.3%	20	- 9.1%	+ 17.6%

Showings



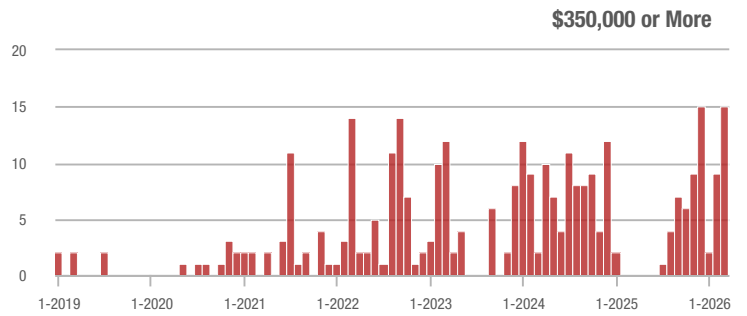
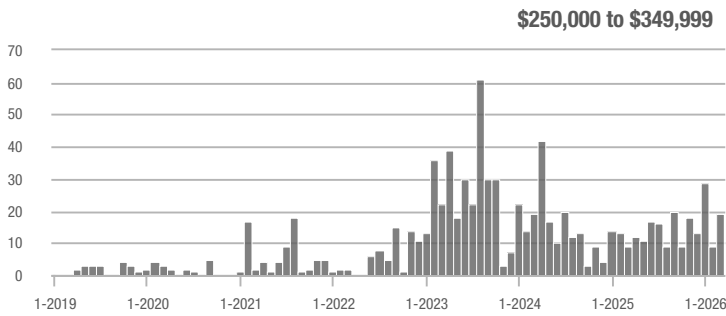
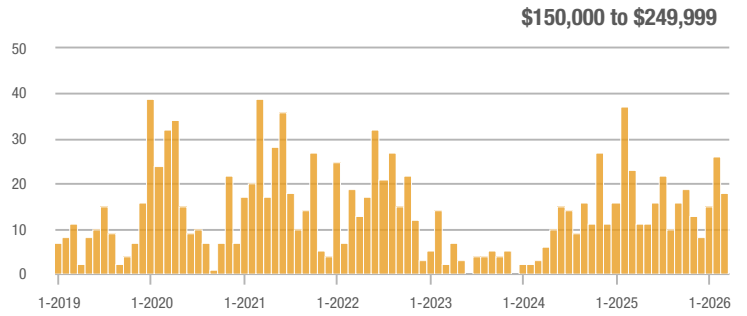
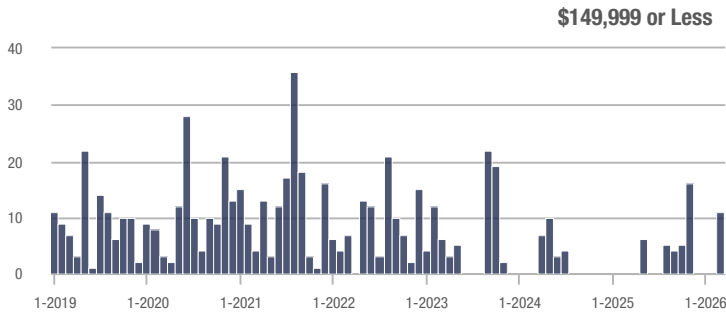
Buyer Interest (Showings/Listings)



Dunn

Price Range	Total Showings			Buyer Interest (Showings/Listings)			Managed Listings		
	March 2026	Year-Over-Year Change	Month-Over-Month Change	March 2026	Year-Over-Year Change	Month-Over-Month Change	March 2026	Year-Over-Year Change	Month-Over-Month Change
\$149,999 or Less	11	—	—	11.0	—	—	1	—	0.0%
\$150,000 to \$249,999	18	- 21.7%	- 30.8%	3.6	+ 38.5%	+ 24.6%	5	- 44.4%	- 44.4%
\$250,000 to \$349,999	19	+ 111.1%	+ 111.1%	1.5	- 62.5%	+ 190.9%	14	+ 133.3%	+ 16.7%
\$350,000 or More	15	—	+ 66.7%	2.0	—	+ 33.3%	8	+ 300.0%	+ 33.3%
Total	63	+ 96.9%	+ 43.2%	2.5	+ 19.5%	+ 43.2%	28	+ 64.7%	0.0%

Showings



Buyer Interest (Showings/Listings)

