

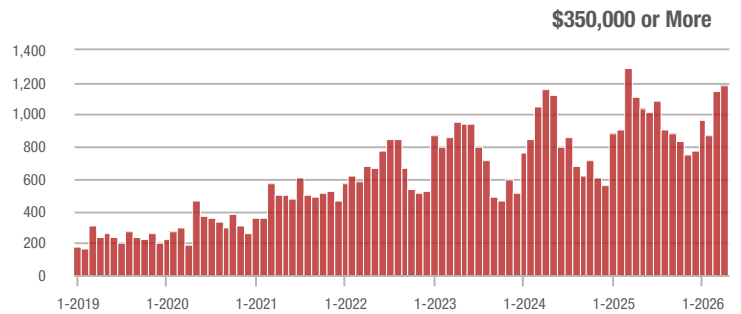
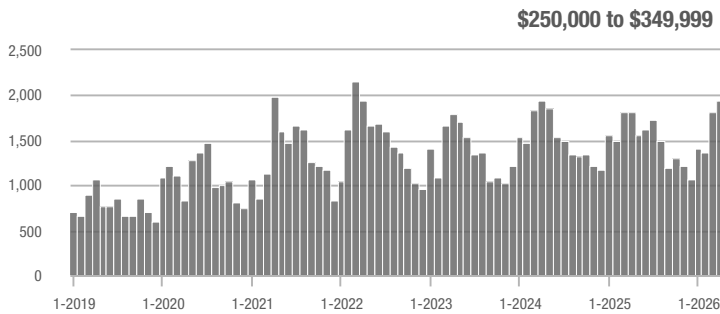
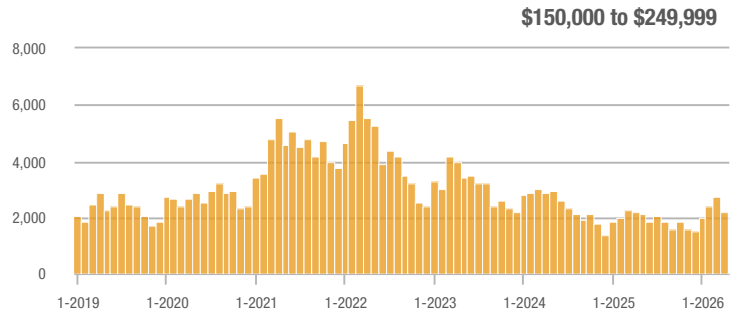
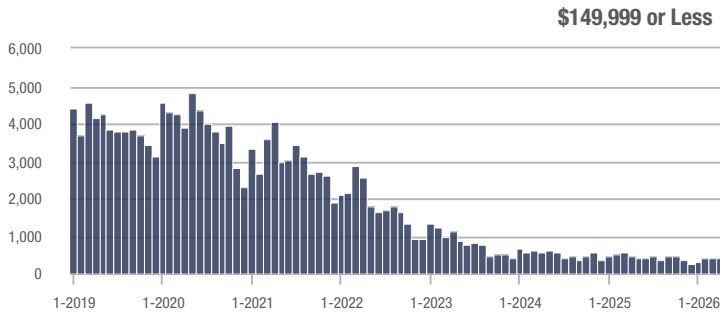
# Showing Statistics

MLS Area	Total Showings	Buyer Interest (Showings / Listings)	Managed Listings
Cumberland County	5,734	4.5	1,380
Fayetteville	4,624	4.4	1,121
Harnett County	837	2.6	377
Zip Code 28314	1,100	4.8	241
Hoke County	1,150	4.1	304
Raeford	1,010	4.3	257
Sanford	613	3.6	193
Zip Code 28311	684	4.2	173
Zip Code 28306	756	4.5	187
Hope Mills	798	5.7	160
Lee County	470	3.7	147
Zip Code 28304	697	4.7	159
Zip Code 27332	317	3.3	101
Zip Code 28303	608	3.9	160
Spring Lake	308	2.5	140
Robeson County	497	2.8	206
Cameron	185	3.6	59
Zip Code 27330	287	4.1	88
Zip Code 28312	391	4.9	88
Moore County	225	2.6	115
Lumberton	221	2.6	98
Zip Code 28305	202	3.7	55
Lillington	112	1.6	80
Zip Code 28358	196	2.8	82
Bunnlevel	43	2.8	16
Sampson County	95	2.5	46
Zip Code 28301	208	3.6	64
Parkton	148	3.2	45
Stedman	64	4.6	16
Dunn	64	2.4	30

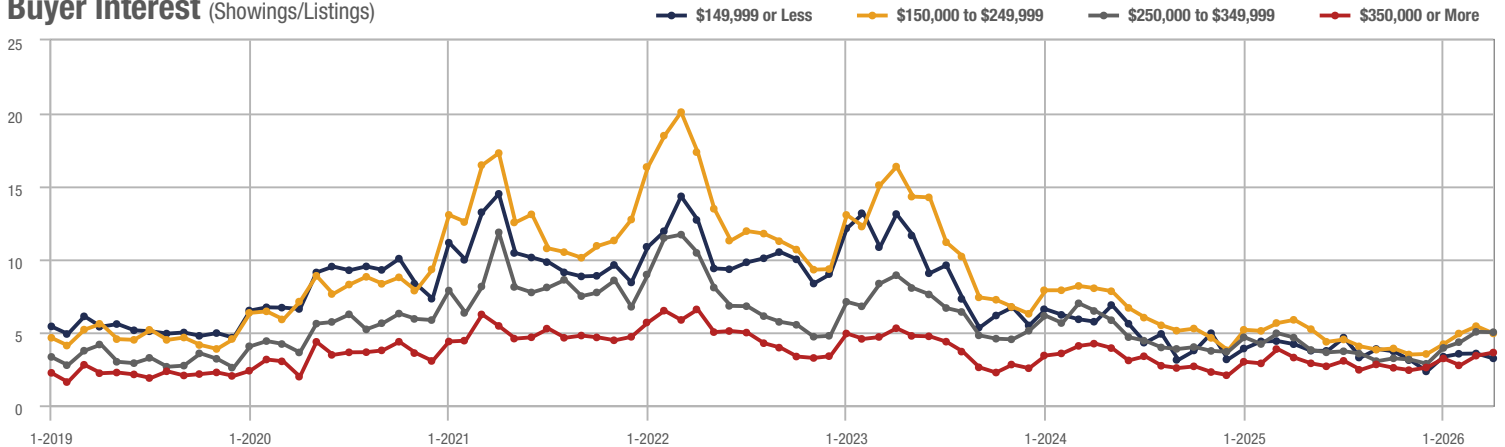
## Cumberland County

Price Range	Total Showings			Buyer Interest (Showings/Listings)			Managed Listings		
	April 2026	Year-Over-Year Change	Month-Over-Month Change	April 2026	Year-Over-Year Change	Month-Over-Month Change	April 2026	Year-Over-Year Change	Month-Over-Month Change
\$149,999 or Less	401	0.0%	- 7.8%	3.2	- 23.8%	- 9.3%	131	+ 0.8%	- 0.8%
\$150,000 to \$249,999	2,195	0.0%	- 18.8%	4.9	- 16.9%	- 9.1%	476	+ 19.9%	- 10.9%
\$250,000 to \$349,999	1,953	+ 7.8%	+ 7.0%	5.0	+ 8.7%	- 0.5%	421	- 11.2%	+ 2.2%
\$350,000 or More	1,185	+ 6.2%	+ 3.5%	3.6	+ 9.1%	+ 6.2%	352	- 12.0%	- 5.4%
<b>Total</b>	<b>5,734</b>	<b>+ 2.4%</b>	<b>- 6.2%</b>	<b>4.5</b>	<b>+ 3.9%</b>	<b>- 1.4%</b>	<b>1,380</b>	<b>- 1.5%</b>	<b>- 4.8%</b>

### Showings



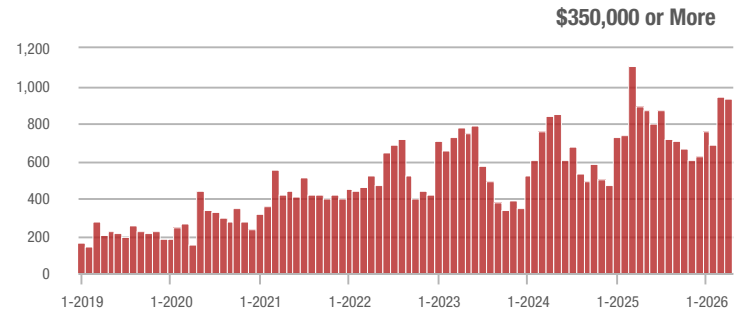
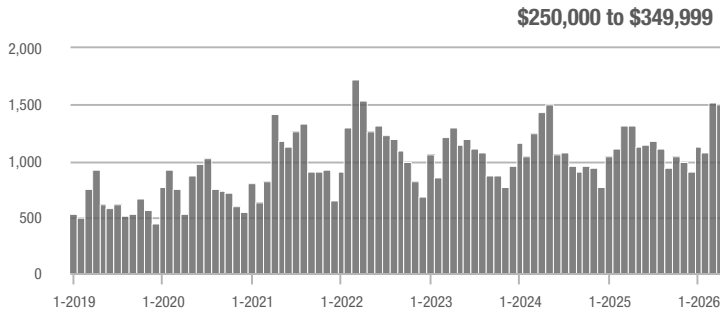
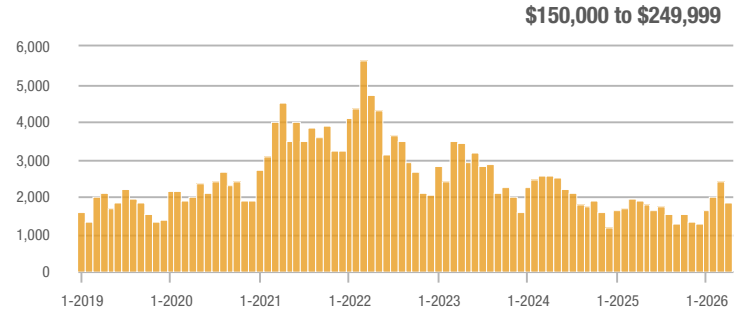
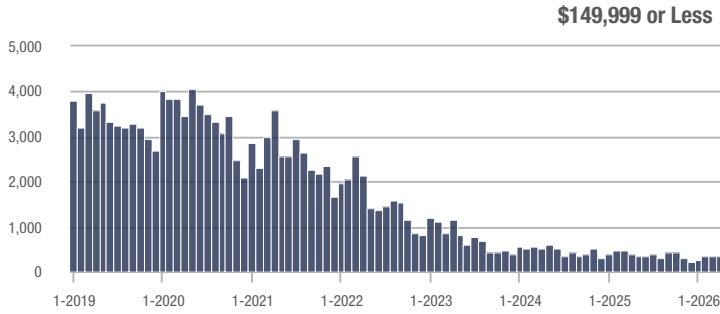
### Buyer Interest (Showings/Listings)



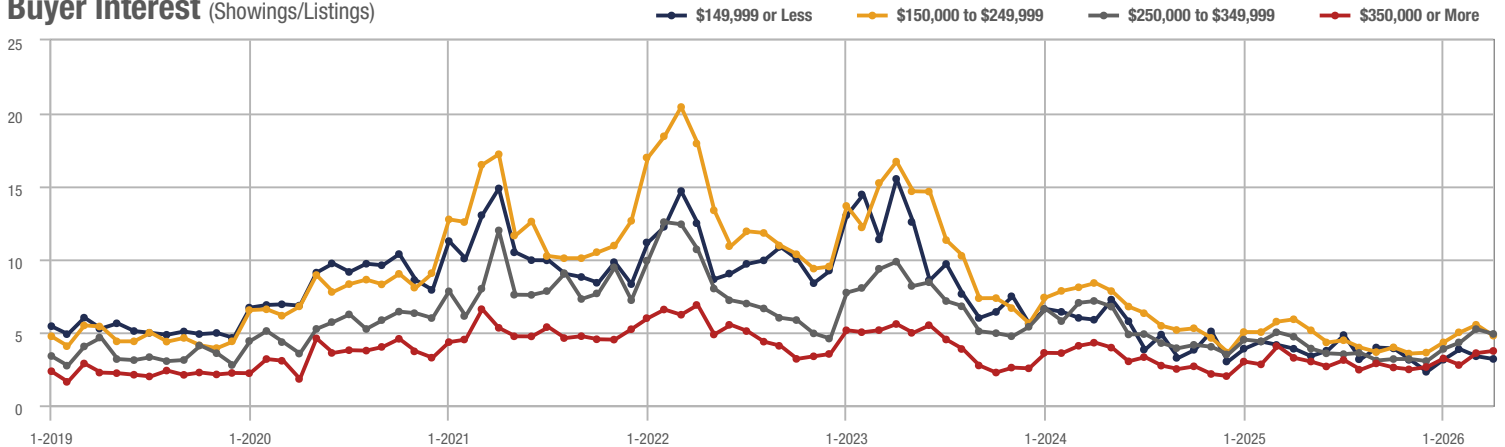
## Fayetteville

Price Range	Total Showings			Buyer Interest (Showings/Listings)			Managed Listings		
	April 2026	Year-Over-Year Change	Month-Over-Month Change	April 2026	Year-Over-Year Change	Month-Over-Month Change	April 2026	Year-Over-Year Change	Month-Over-Month Change
\$149,999 or Less	335	- 1.3%	- 0.9%	3.2	- 17.9%	- 5.5%	112	- 4.3%	0.0%
\$150,000 to \$249,999	1,856	- 1.3%	- 22.7%	4.8	- 18.6%	- 13.5%	413	+ 22.2%	- 10.4%
\$250,000 to \$349,999	1,496	+ 13.7%	- 1.6%	4.9	+ 4.3%	- 6.3%	327	+ 0.9%	+ 1.2%
\$350,000 or More	937	+ 4.8%	- 0.5%	3.7	+ 12.1%	+ 4.1%	269	- 16.7%	- 5.6%
<b>Total</b>	<b>4,624</b>	<b>+ 3.0%</b>	<b>- 11.1%</b>	<b>4.4</b>	<b>+ 1.3%</b>	<b>- 6.3%</b>	<b>1,121</b>	<b>+ 1.7%</b>	<b>- 5.1%</b>

### Showings



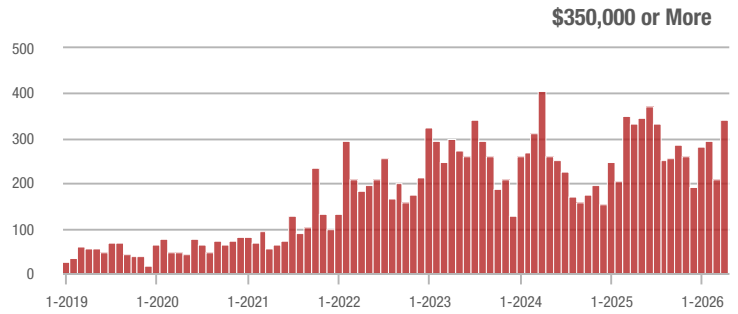
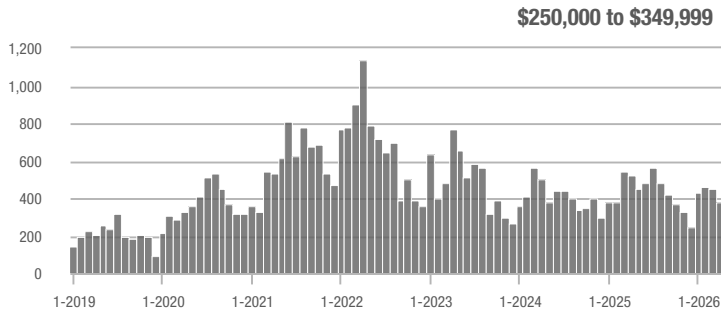
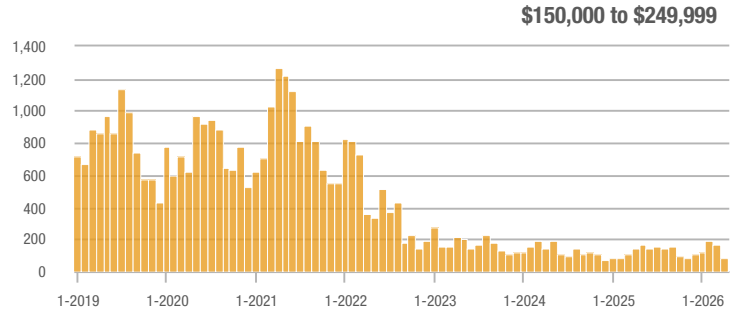
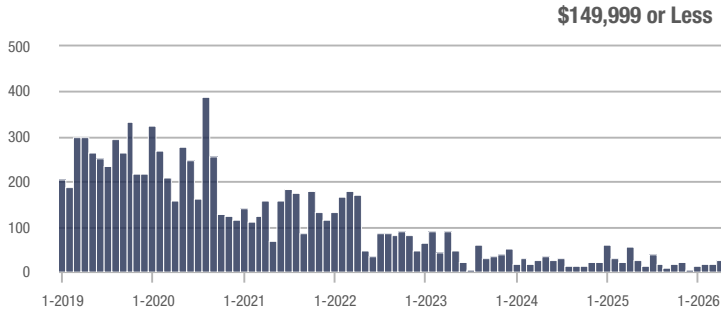
### Buyer Interest (Showings/Listings)



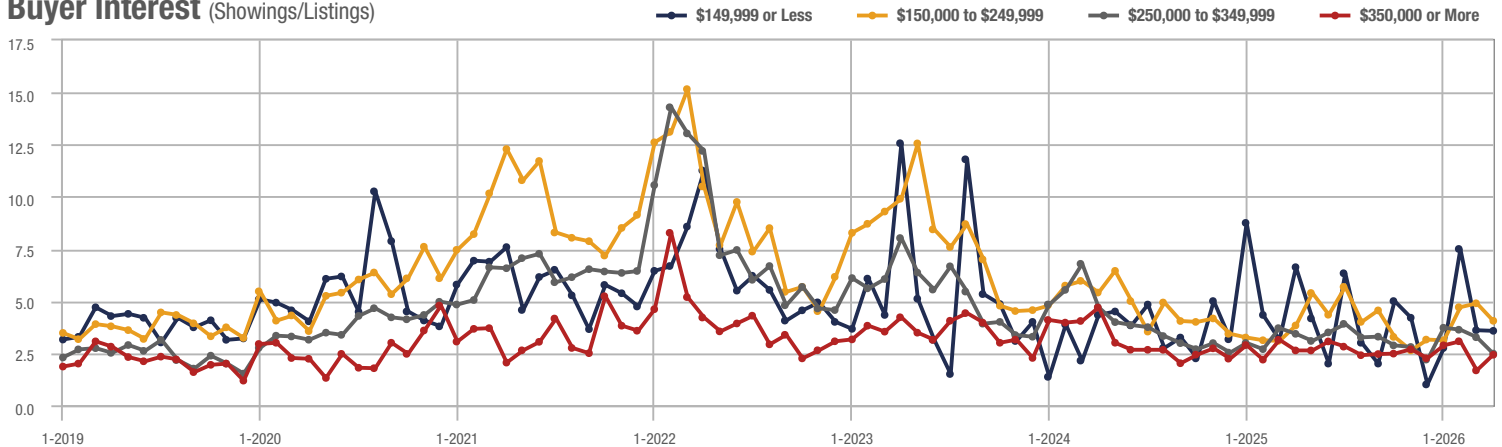
## Harnett County

Price Range	Total Showings			Buyer Interest (Showings/Listings)			Managed Listings		
	April 2026	Year-Over-Year Change	Month-Over-Month Change	April 2026	Year-Over-Year Change	Month-Over-Month Change	April 2026	Year-Over-Year Change	Month-Over-Month Change
\$149,999 or Less	25	- 36.4%	+ 38.9%	3.6	- 45.5%	- 0.8%	7	- 30.0%	+ 40.0%
\$150,000 to \$249,999	89	- 36.4%	- 45.1%	4.1	+ 7.9%	- 17.2%	24	- 40.0%	- 31.4%
\$250,000 to \$349,999	382	- 27.5%	- 15.1%	2.5	- 26.5%	- 24.1%	181	- 8.1%	- 6.2%
\$350,000 or More	341	+ 2.7%	+ 63.9%	2.4	- 7.7%	+ 44.8%	165	+ 10.0%	+ 8.6%
<b>Total</b>	<b>837</b>	<b>- 20.5%</b>	<b>- 0.1%</b>	<b>2.6</b>	<b>- 16.3%</b>	<b>+ 2.0%</b>	<b>377</b>	<b>- 5.0%</b>	<b>- 2.1%</b>

### Showings



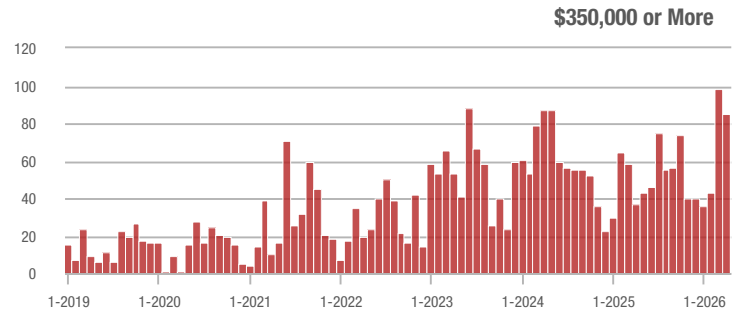
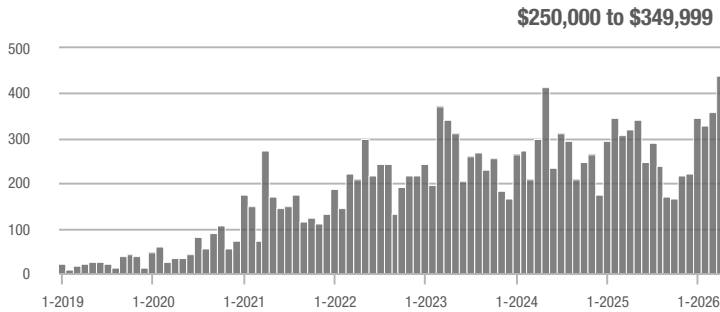
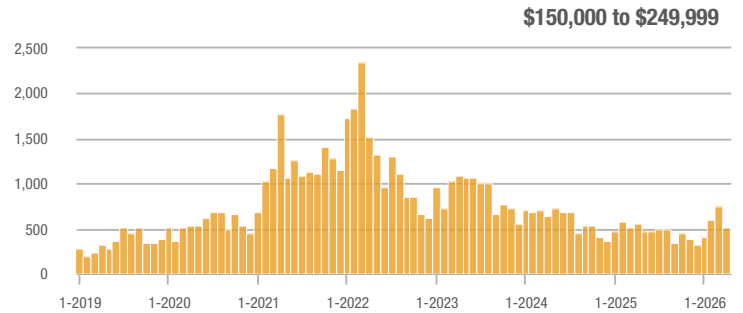
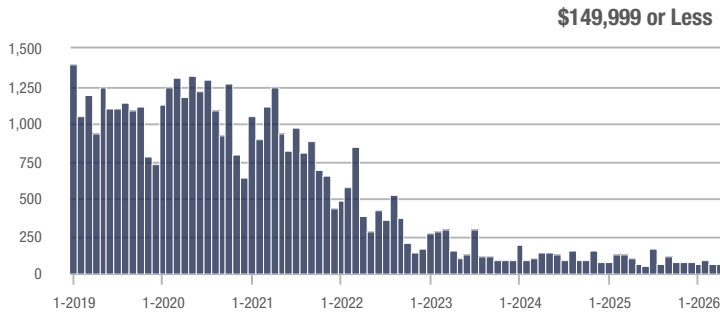
### Buyer Interest (Showings/Listings)



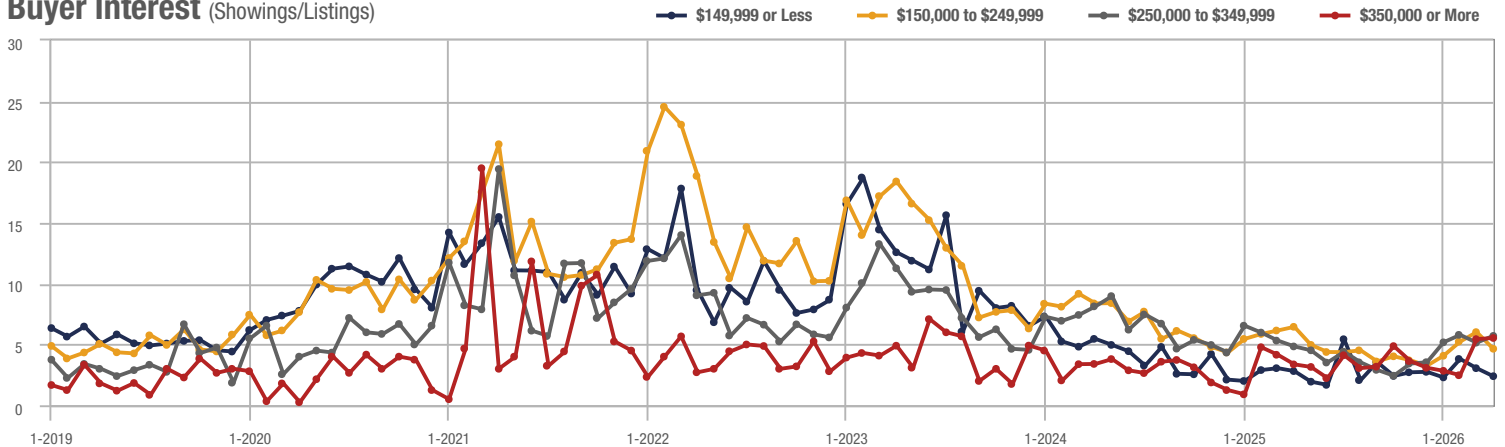
## Zip Code 28314

Price Range	Total Showings			Buyer Interest (Showings/Listings)			Managed Listings		
	April 2026	Year-Over-Year Change	Month-Over-Month Change	April 2026	Year-Over-Year Change	Month-Over-Month Change	April 2026	Year-Over-Year Change	Month-Over-Month Change
\$149,999 or Less	62	- 7.7%	- 7.5%	2.4	- 14.3%	- 21.6%	30	- 30.2%	+ 11.1%
\$150,000 to \$249,999	514	- 7.7%	- 32.1%	4.6	- 29.2%	- 22.8%	115	+ 29.2%	- 10.9%
\$250,000 to \$349,999	439	+ 37.6%	+ 23.0%	5.7	+ 18.8%	+ 10.8%	80	+ 19.4%	+ 3.9%
\$350,000 or More	85	+ 129.7%	- 13.3%	5.5	+ 61.8%	+ 1.6%	16	+ 23.1%	- 15.8%
<b>Total</b>	<b>1,100</b>	<b>+ 7.8%</b>	<b>- 14.0%</b>	<b>4.8</b>	<b>- 5.1%</b>	<b>- 10.1%</b>	<b>241</b>	<b>+ 13.7%</b>	<b>- 4.4%</b>

### Showings



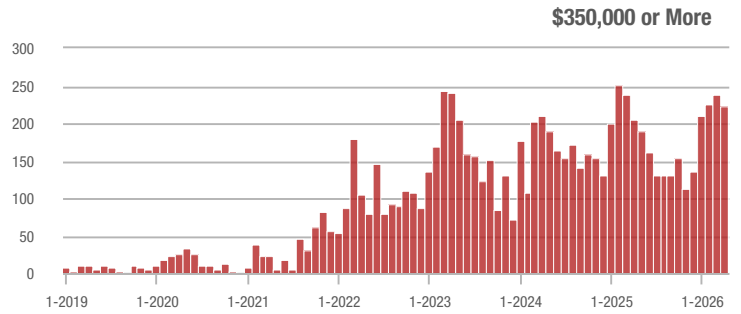
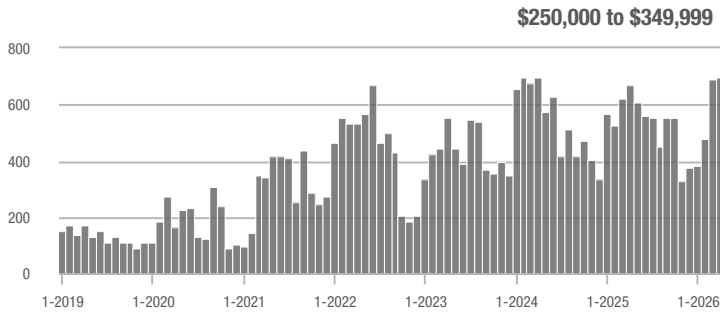
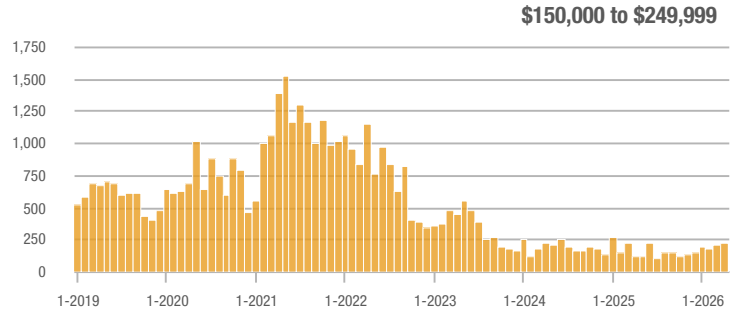
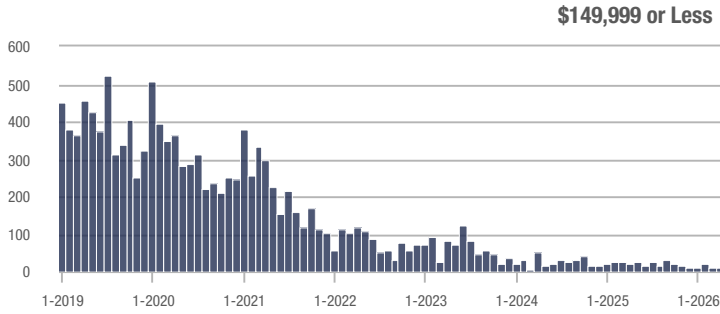
### Buyer Interest (Showings/Listings)



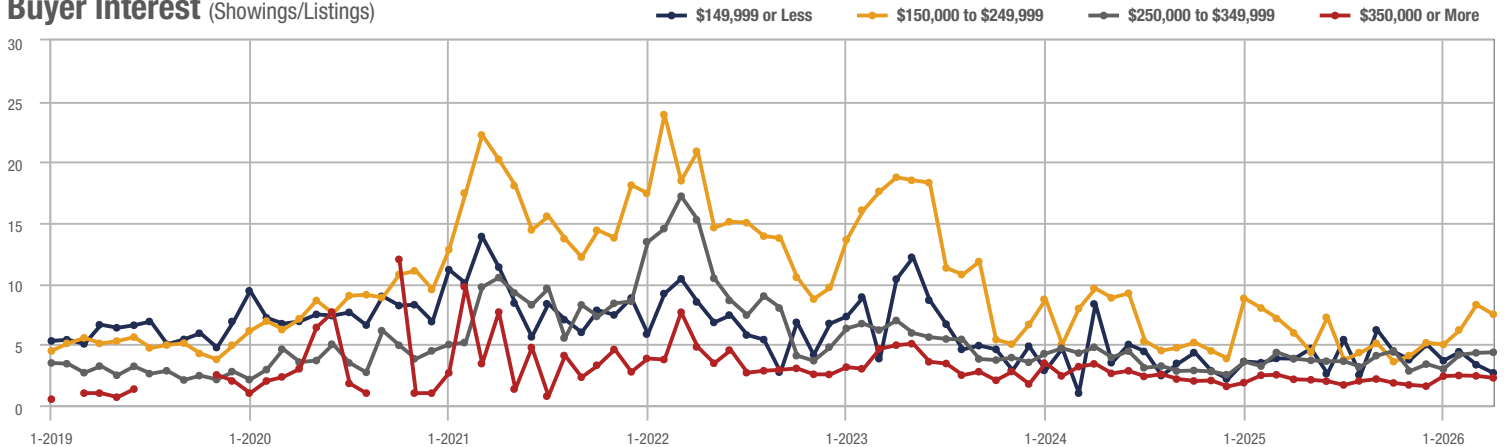
## Hoke County

Price Range	Total Showings			Buyer Interest (Showings/Listings)			Managed Listings		
	April 2026	Year-Over-Year Change	Month-Over-Month Change	April 2026	Year-Over-Year Change	Month-Over-Month Change	April 2026	Year-Over-Year Change	Month-Over-Month Change
\$149,999 or Less	8	+ 77.0%	- 20.0%	2.7	- 28.9%	- 20.0%	3	- 50.0%	0.0%
\$150,000 to \$249,999	223	+ 77.0%	+ 10.4%	7.5	+ 25.0%	- 9.5%	33	+ 26.9%	+ 13.8%
\$250,000 to \$349,999	696	+ 4.2%	+ 0.6%	4.4	+ 15.8%	+ 1.1%	171	- 20.5%	- 7.1%
\$350,000 or More	223	+ 8.3%	- 6.3%	2.3	+ 9.5%	- 6.7%	97	- 28.1%	- 8.5%
<b>Total</b>	<b>1,150</b>	<b>+ 12.4%</b>	<b>+ 0.7%</b>	<b>4.1</b>	<b>+ 41.3%</b>	<b>+ 6.7%</b>	<b>304</b>	<b>- 20.4%</b>	<b>- 5.6%</b>

### Showings



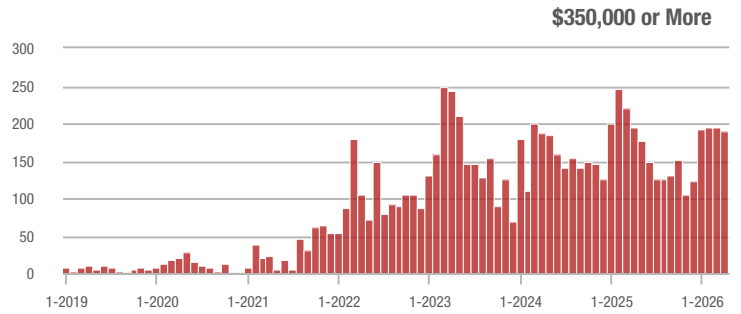
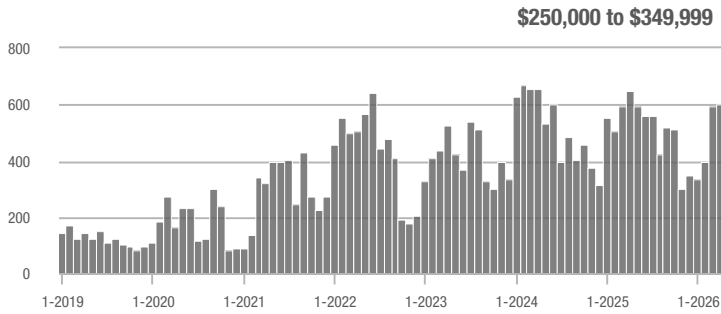
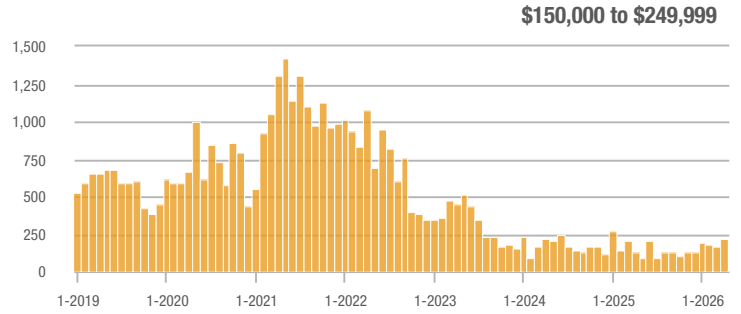
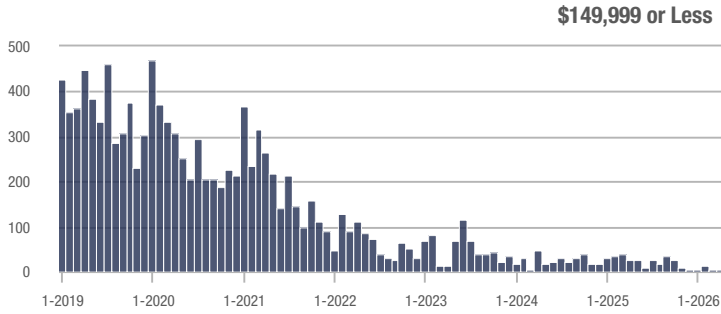
### Buyer Interest (Showings/Listings)



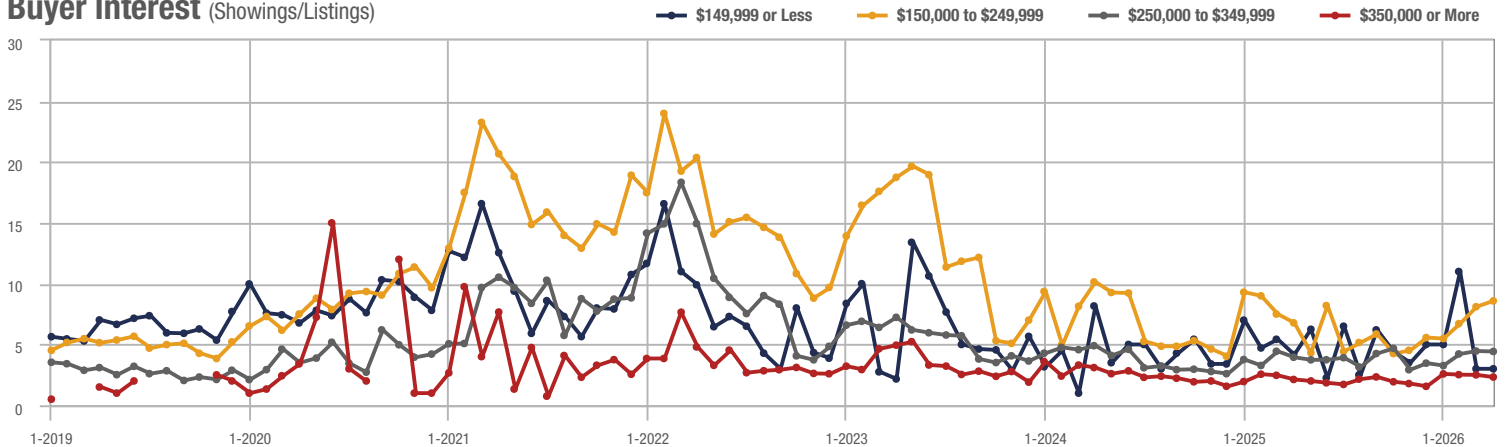
## Raeford

Price Range	Total Showings			Buyer Interest (Showings/Listings)			Managed Listings		
	April 2026	Year-Over-Year Change	Month-Over-Month Change	April 2026	Year-Over-Year Change	Month-Over-Month Change	April 2026	Year-Over-Year Change	Month-Over-Month Change
\$149,999 or Less	3	+ 72.4%	0.0%	3.0	- 28.6%	0.0%	1	- 85.7%	0.0%
\$150,000 to \$249,999	212	+ 72.4%	+ 24.0%	8.6	+ 26.5%	+ 5.9%	27	+ 28.6%	+ 8.0%
\$250,000 to \$349,999	605	- 7.1%	+ 1.7%	4.4	+ 10.0%	- 0.9%	149	- 24.7%	- 2.0%
\$350,000 or More	190	- 3.1%	- 2.1%	2.3	+ 9.5%	- 7.1%	80	- 38.0%	- 5.9%
<b>Total</b>	<b>1,010</b>	<b>+ 1.4%</b>	<b>+ 4.9%</b>	<b>4.3</b>	<b>+ 40.1%</b>	<b>+ 7.3%</b>	<b>257</b>	<b>- 27.6%</b>	<b>- 2.3%</b>

### Showings



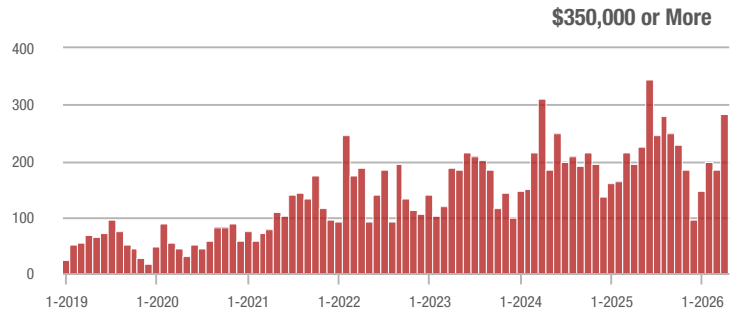
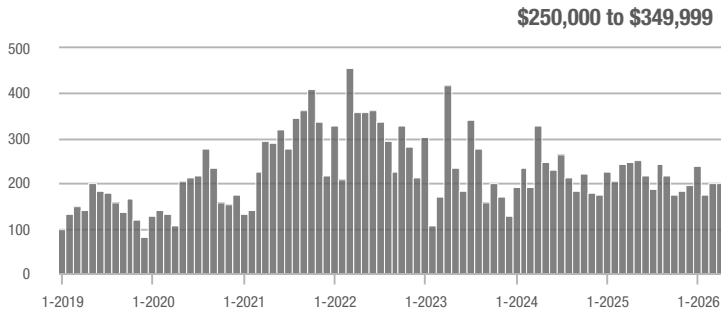
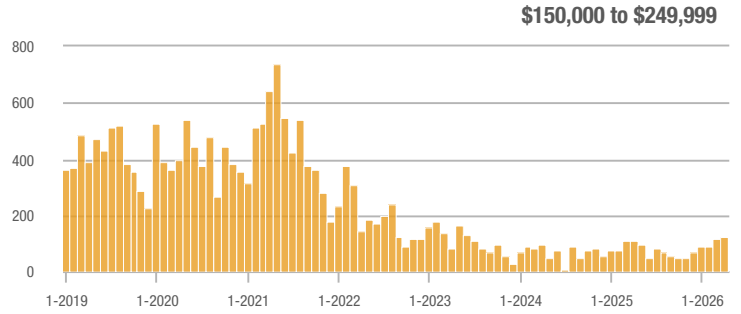
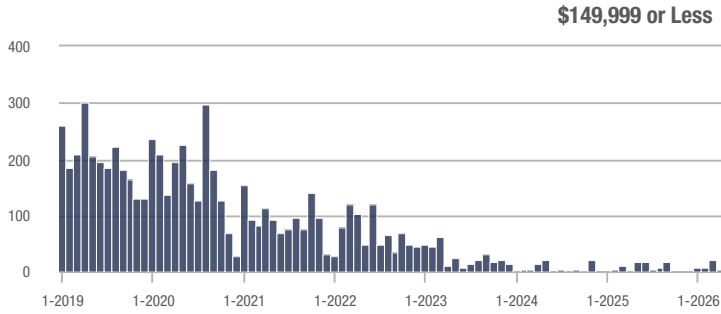
### Buyer Interest (Showings/Listings)



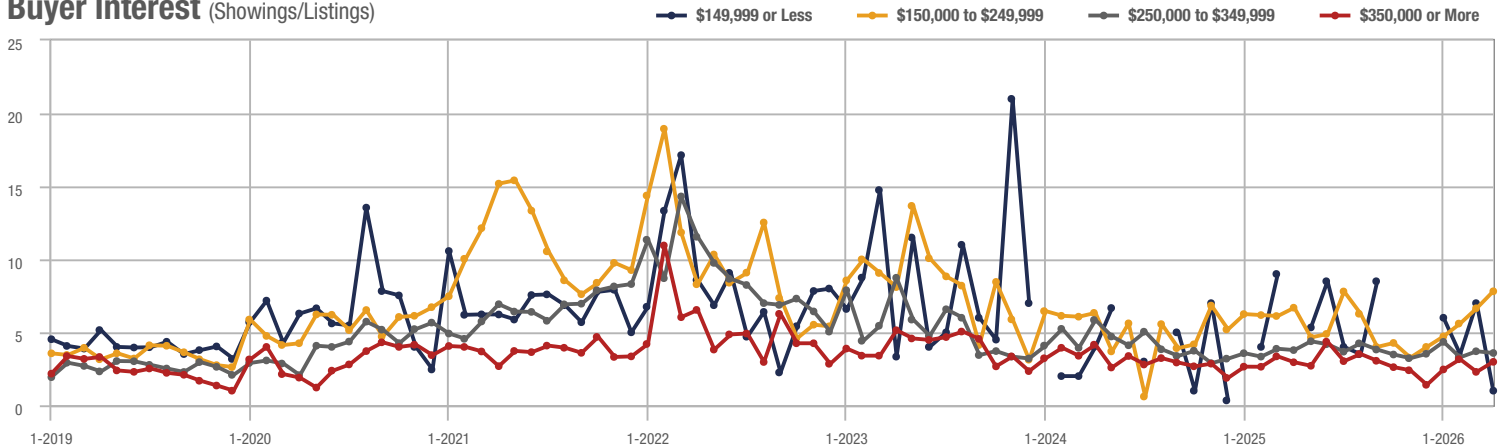
## Sanford

Price Range	Total Showings			Buyer Interest (Showings/Listings)			Managed Listings		
	April 2026	Year-Over-Year Change	Month-Over-Month Change	April 2026	Year-Over-Year Change	Month-Over-Month Change	April 2026	Year-Over-Year Change	Month-Over-Month Change
\$149,999 or Less	4	—	- 81.0%	1.0	—	- 85.7%	4	—	+ 33.3%
\$150,000 to \$249,999	125	+ 12.6%	+ 10.6%	7.8	+ 16.4%	+ 17.5%	16	- 11.1%	- 5.9%
\$250,000 to \$349,999	199	- 20.1%	- 0.5%	3.6	- 5.3%	- 3.2%	68	- 10.5%	0.0%
\$350,000 or More	285	+ 46.2%	+ 54.1%	3.0	+ 3.4%	+ 30.0%	105	+ 23.5%	+ 12.9%
<b>Total</b>	<b>613</b>	<b>+ 10.5%</b>	<b>+ 18.1%</b>	<b>3.6</b>	<b>+ 2.4%</b>	<b>+ 10.8%</b>	<b>193</b>	<b>+ 7.8%</b>	<b>+ 6.6%</b>

### Showings



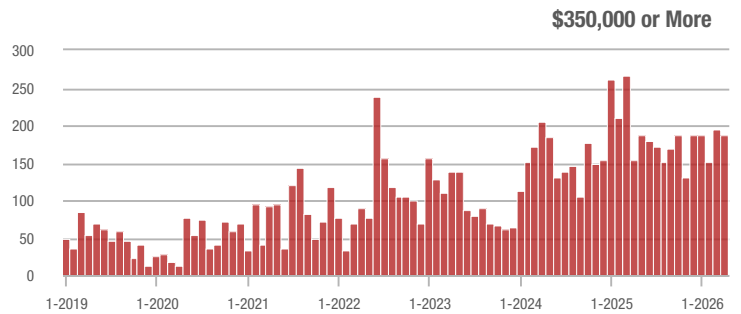
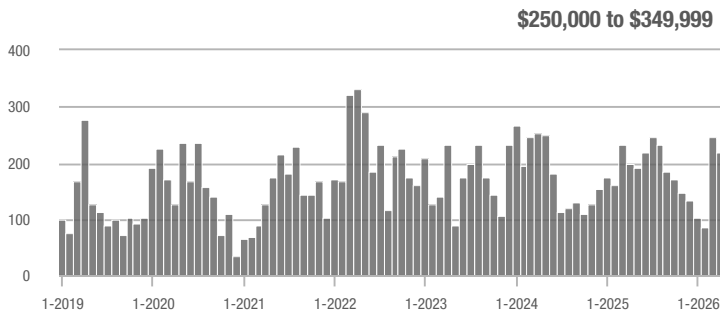
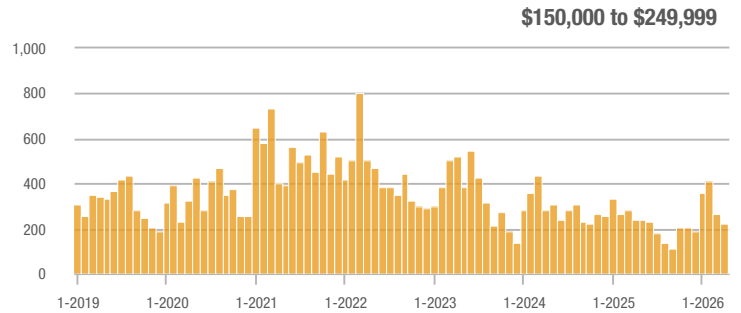
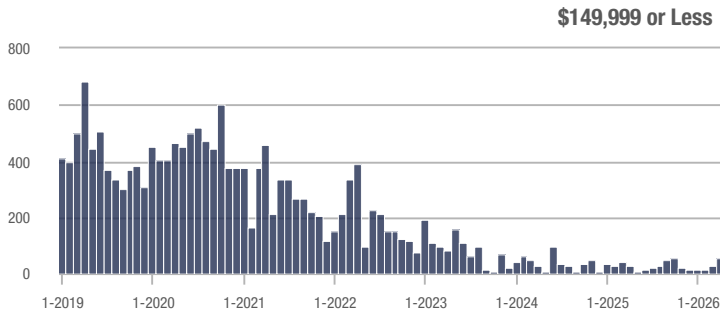
### Buyer Interest (Showings/Listings)



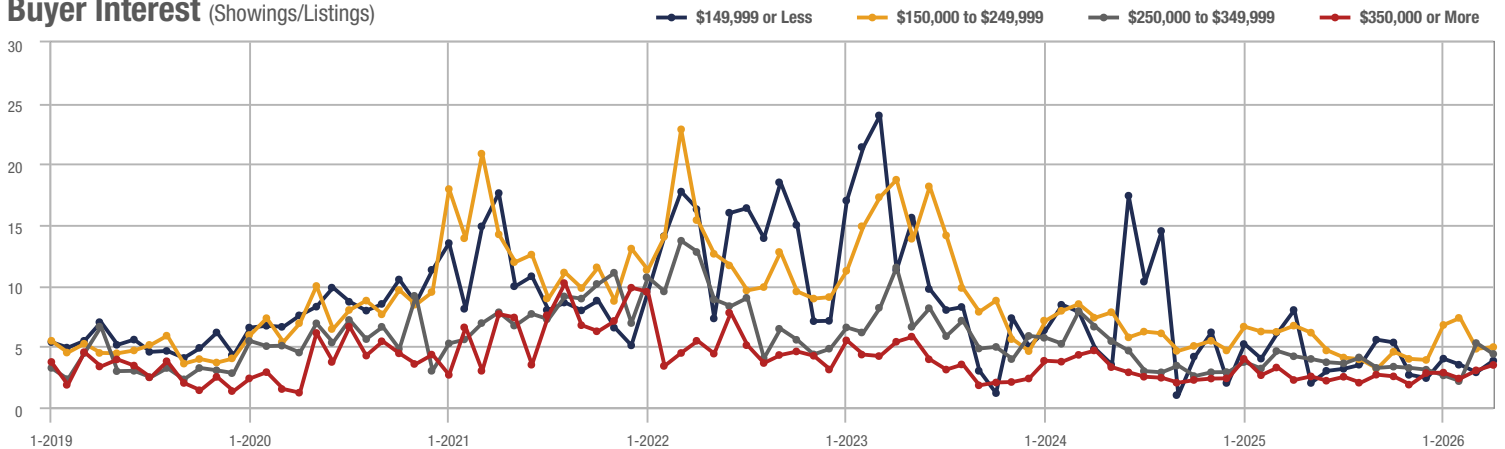
## Zip Code 28311

Price Range	Total Showings			Buyer Interest (Showings/Listings)			Managed Listings		
	April 2026	Year-Over-Year Change	Month-Over-Month Change	April 2026	Year-Over-Year Change	Month-Over-Month Change	April 2026	Year-Over-Year Change	Month-Over-Month Change
\$149,999 or Less	54	- 7.5%	+ 125.0%	3.8	- 52.5%	+ 33.3%	13	+ 333.3%	+ 44.4%
\$150,000 to \$249,999	222	- 7.5%	- 17.2%	5.0	- 25.4%	+ 2.9%	49	+ 28.9%	- 18.3%
\$250,000 to \$349,999	220	+ 11.1%	- 10.9%	4.4	+ 4.8%	- 17.0%	57	- 8.1%	+ 5.6%
\$350,000 or More	188	+ 21.3%	- 3.6%	3.5	+ 59.1%	+ 14.5%	54	- 35.7%	- 12.9%
<b>Total</b>	<b>684</b>	<b>+ 10.9%</b>	<b>- 6.8%</b>	<b>4.2</b>	<b>+ 19.8%</b>	<b>- 0.3%</b>	<b>173</b>	<b>- 7.5%</b>	<b>- 6.5%</b>

### Showings



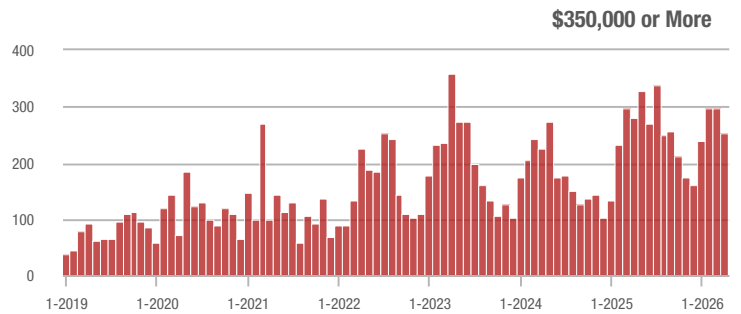
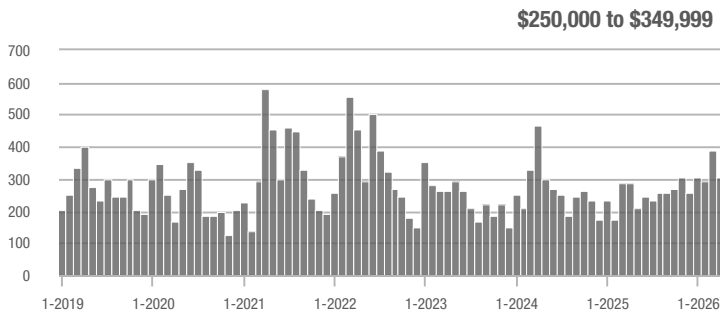
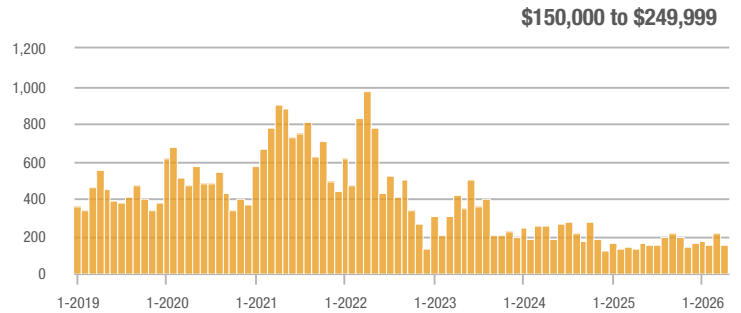
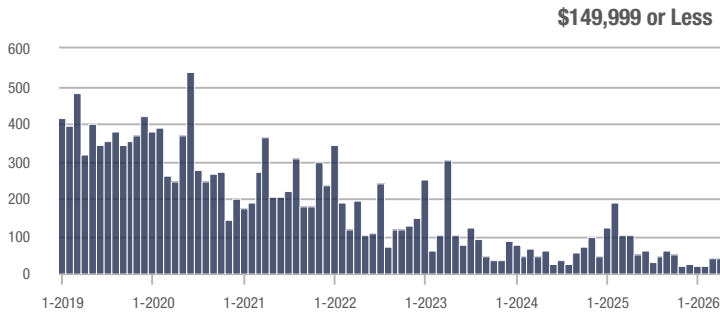
### Buyer Interest (Showings/Listings)



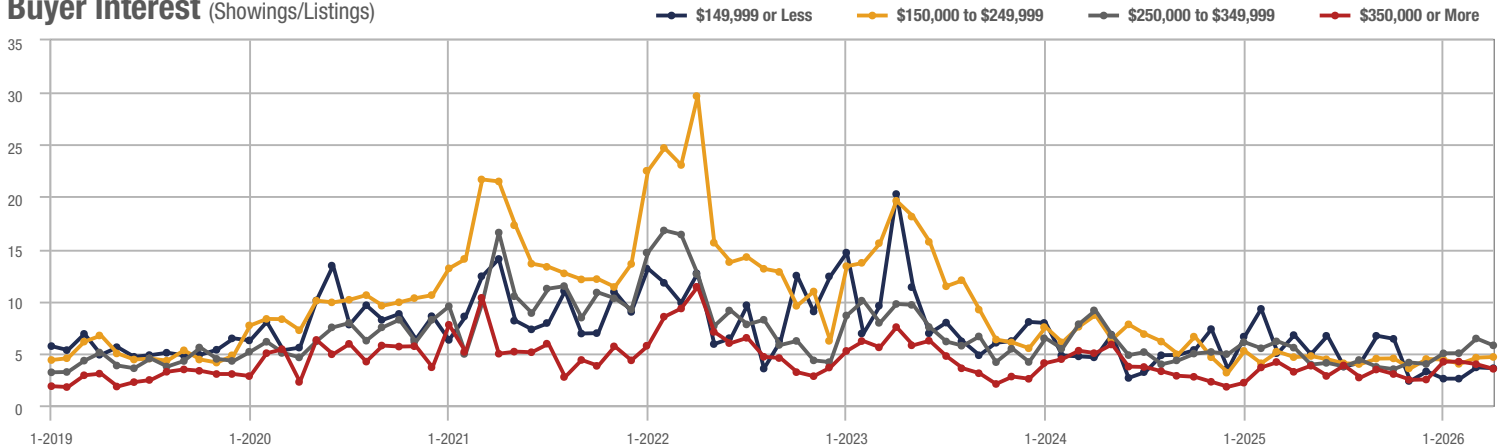
## Zip Code 28306

Price Range	Total Showings			Buyer Interest (Showings/Listings)			Managed Listings		
	April 2026	Year-Over-Year Change	Month-Over-Month Change	April 2026	Year-Over-Year Change	Month-Over-Month Change	April 2026	Year-Over-Year Change	Month-Over-Month Change
\$149,999 or Less	39	+ 14.7%	- 4.9%	3.6	- 46.3%	- 2.2%	11	- 26.7%	- 21.4%
\$150,000 to \$249,999	156	+ 14.7%	- 27.4%	4.6	0.0%	+ 1.6%	38	+ 22.6%	- 24.0%
\$250,000 to \$349,999	308	+ 7.7%	- 20.8%	5.8	+ 5.5%	- 10.3%	57	+ 7.5%	- 14.9%
\$350,000 or More	253	- 10.0%	- 14.8%	3.5	+ 9.4%	- 11.1%	81	- 12.9%	- 3.6%
<b>Total</b>	<b>756</b>	<b>- 6.0%</b>	<b>- 19.7%</b>	<b>4.5</b>	<b>- 3.5%</b>	<b>- 7.7%</b>	<b>187</b>	<b>- 2.6%</b>	<b>- 13.0%</b>

### Showings



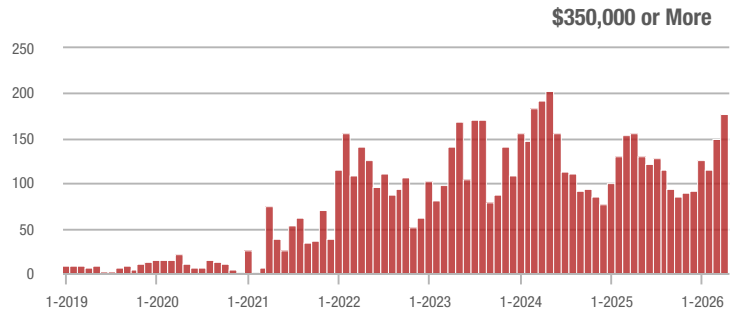
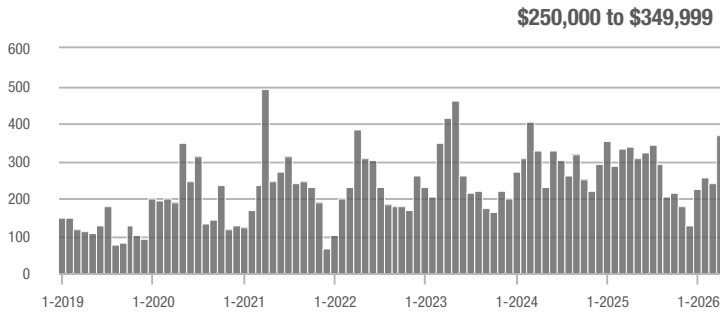
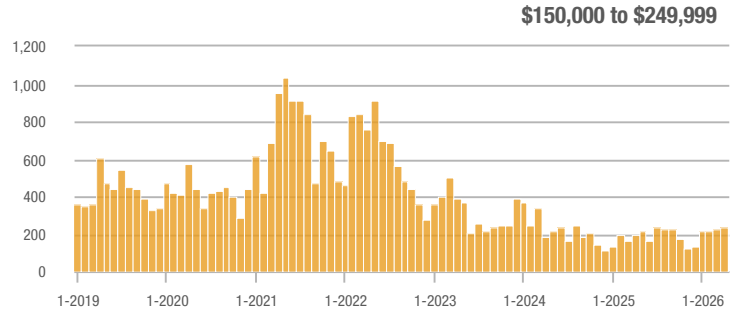
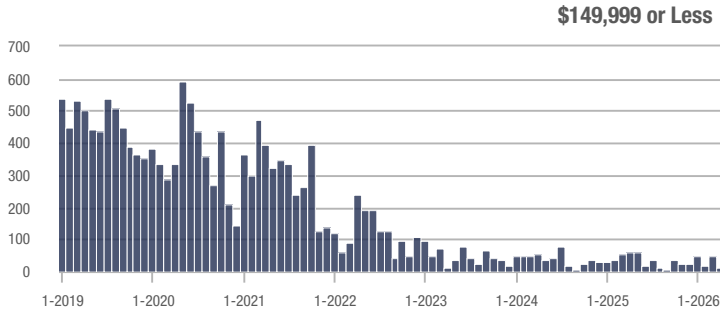
### Buyer Interest (Showings/Listings)



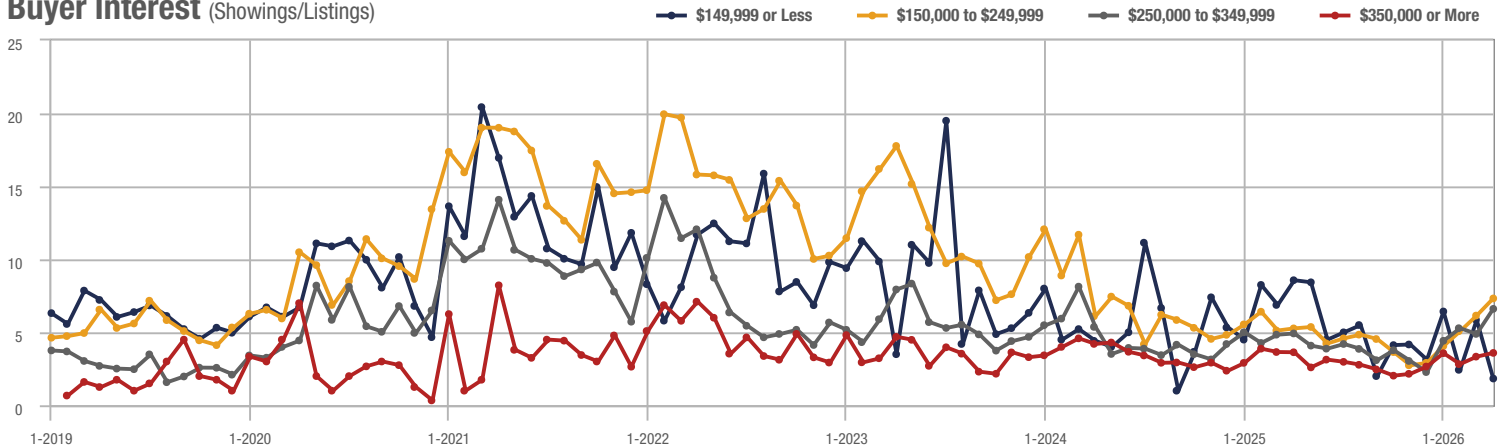
## Hope Mills

Price Range	Total Showings			Buyer Interest (Showings/Listings)			Managed Listings		
	April 2026	Year-Over-Year Change	Month-Over-Month Change	April 2026	Year-Over-Year Change	Month-Over-Month Change	April 2026	Year-Over-Year Change	Month-Over-Month Change
\$149,999 or Less	13	+ 20.1%	- 71.7%	1.8	- 79.1%	- 68.7%	7	0.0%	- 12.5%
\$150,000 to \$249,999	239	+ 20.1%	+ 6.7%	7.3	+ 37.7%	+ 19.1%	35	- 12.5%	- 12.5%
\$250,000 to \$349,999	369	+ 9.2%	+ 53.1%	6.6	+ 34.7%	+ 35.2%	64	- 32.6%	+ 6.7%
\$350,000 or More	177	+ 14.2%	+ 18.8%	3.6	0.0%	+ 7.6%	54	+ 25.6%	- 5.3%
<b>Total</b>	<b>798</b>	<b>+ 6.1%</b>	<b>+ 20.9%</b>	<b>5.7</b>	<b>+ 22.7%</b>	<b>+ 24.7%</b>	<b>160</b>	<b>- 13.5%</b>	<b>- 3.0%</b>

### Showings



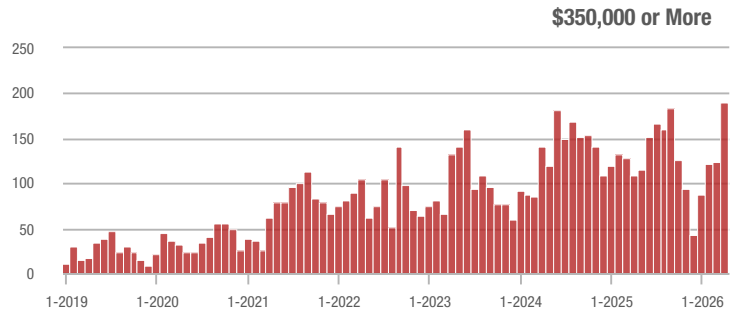
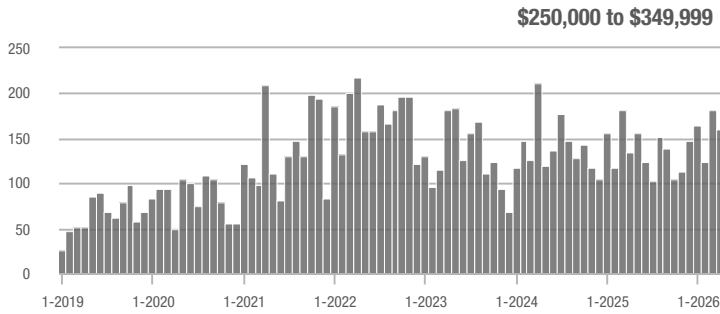
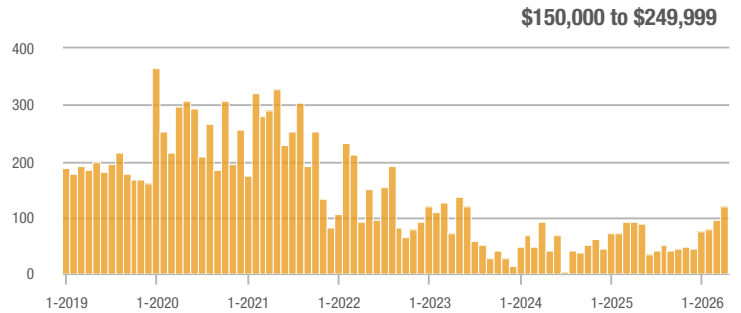
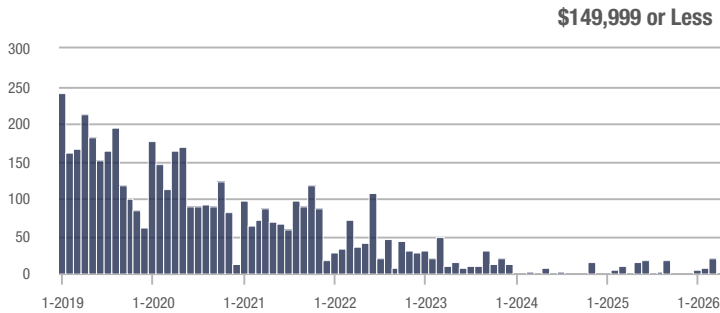
### Buyer Interest (Showings/Listings)



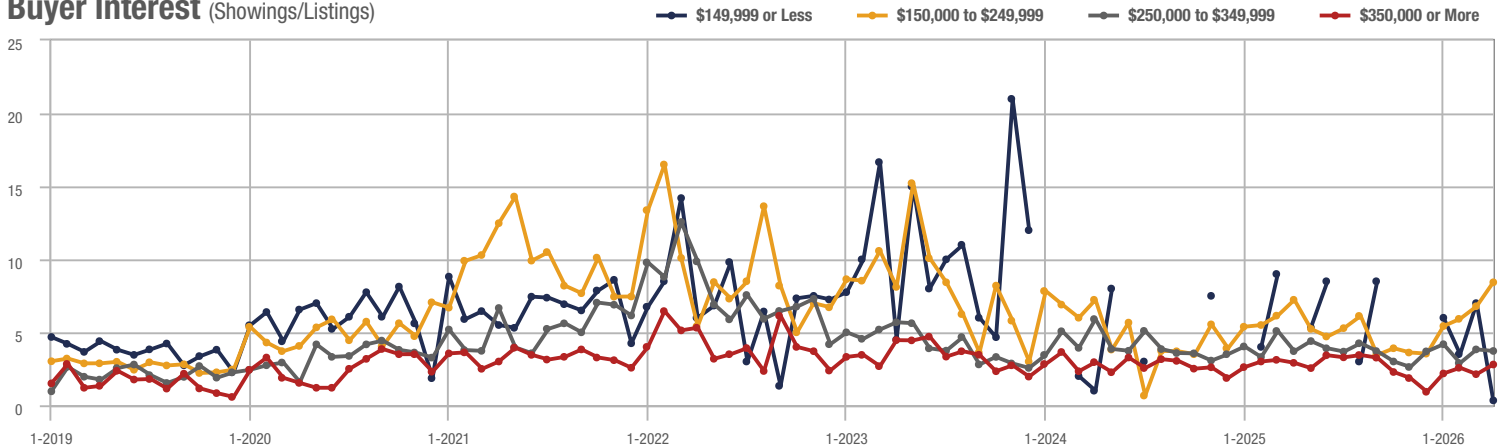
## Lee County

Price Range	Total Showings			Buyer Interest (Showings/Listings)			Managed Listings		
	April 2026	Year-Over-Year Change	Month-Over-Month Change	April 2026	Year-Over-Year Change	Month-Over-Month Change	April 2026	Year-Over-Year Change	Month-Over-Month Change
\$149,999 or Less	1	—	- 95.2%	0.3	—	- 95.2%	3	—	0.0%
\$150,000 to \$249,999	118	+ 25.5%	+ 24.2%	8.4	+ 16.7%	+ 24.2%	14	0.0%	0.0%
\$250,000 to \$349,999	160	+ 19.4%	- 11.6%	3.7	0.0%	- 2.8%	55	+ 31.0%	- 8.3%
\$350,000 or More	191	+ 76.9%	+ 55.3%	2.8	- 3.4%	+ 31.0%	75	+ 56.3%	+ 13.6%
<b>Total</b>	<b>470</b>	<b>+ 39.9%</b>	<b>+ 11.9%</b>	<b>3.7</b>	<b>- 1.0%</b>	<b>+ 8.9%</b>	<b>147</b>	<b>+ 41.3%</b>	<b>+ 2.8%</b>

### Showings



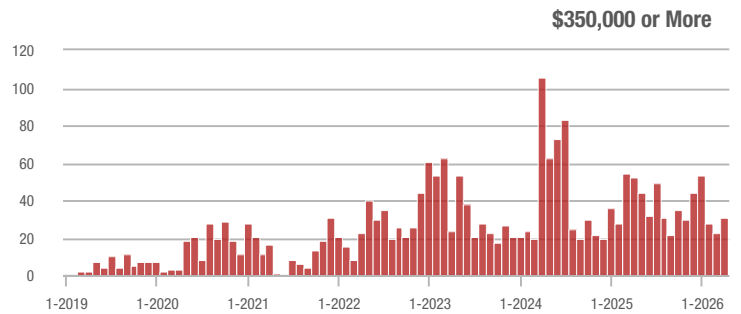
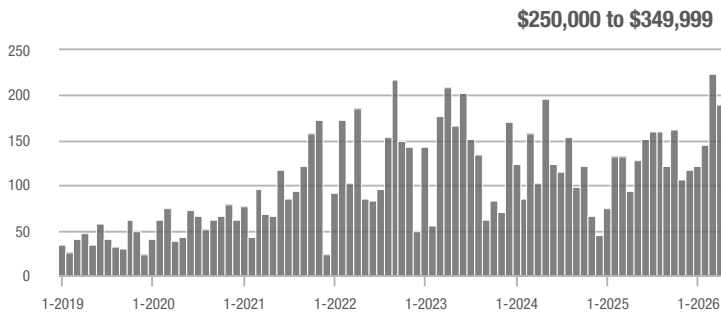
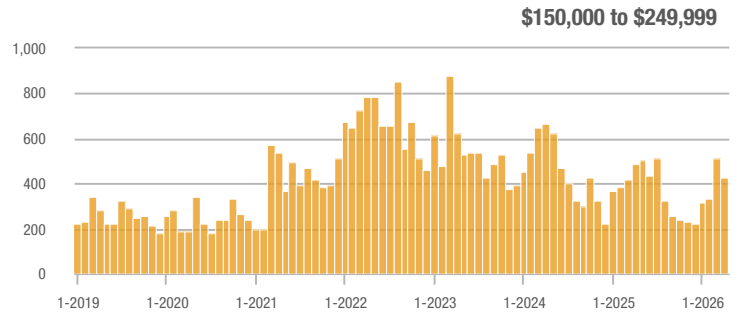
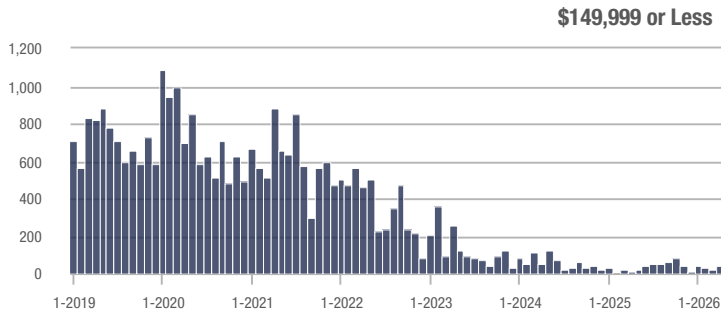
### Buyer Interest (Showings/Listings)



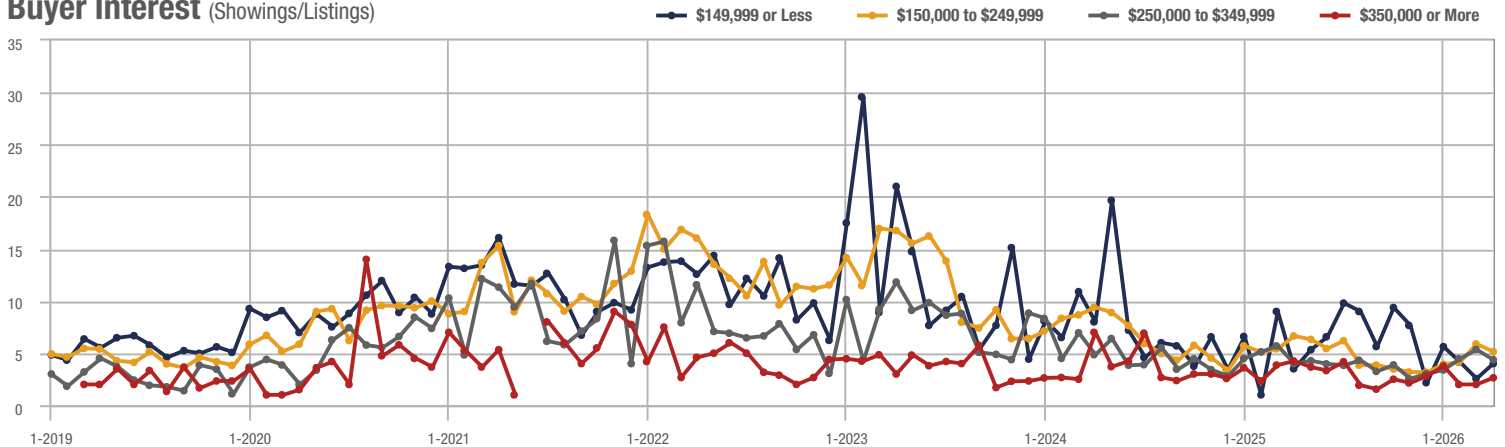
## Zip Code 28304

Price Range	Total Showings			Buyer Interest (Showings/Listings)			Managed Listings		
	April 2026	Year-Over-Year Change	Month-Over-Month Change	April 2026	Year-Over-Year Change	Month-Over-Month Change	April 2026	Year-Over-Year Change	Month-Over-Month Change
\$149,999 or Less	45	- 11.2%	+ 80.0%	4.0	+ 14.3%	+ 56.5%	14	+ 366.7%	+ 16.7%
\$150,000 to \$249,999	430	- 11.2%	- 16.3%	5.1	- 22.7%	- 12.5%	87	+ 13.0%	- 6.5%
\$250,000 to \$349,999	191	+ 103.2%	- 14.7%	4.4	+ 10.0%	- 18.2%	46	+ 53.3%	- 2.1%
\$350,000 or More	31	- 40.4%	+ 34.8%	2.6	- 39.5%	+ 31.8%	12	- 14.3%	+ 9.1%
<b>Total</b>	<b>697</b>	<b>+ 9.4%</b>	<b>- 11.3%</b>	<b>4.7</b>	<b>- 14.7%</b>	<b>- 9.1%</b>	<b>159</b>	<b>+ 28.2%</b>	<b>- 2.5%</b>

### Showings



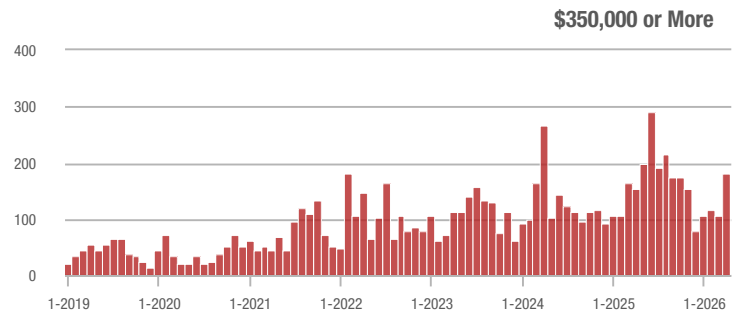
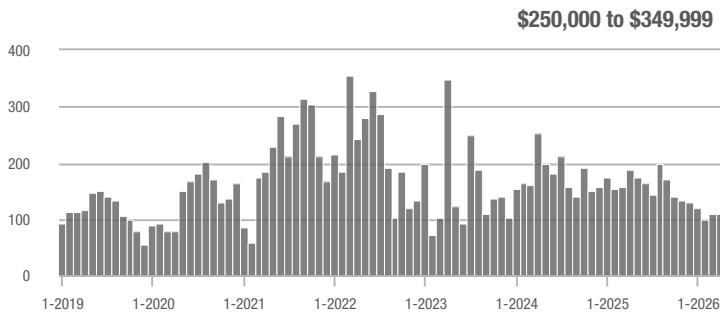
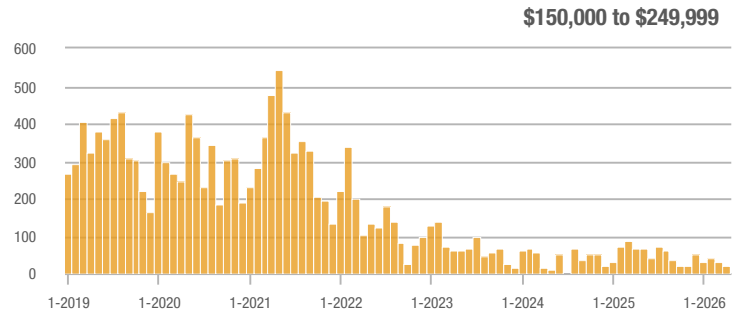
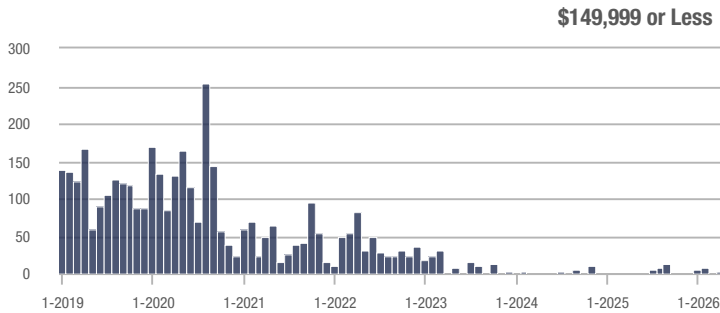
### Buyer Interest (Showings/Listings)



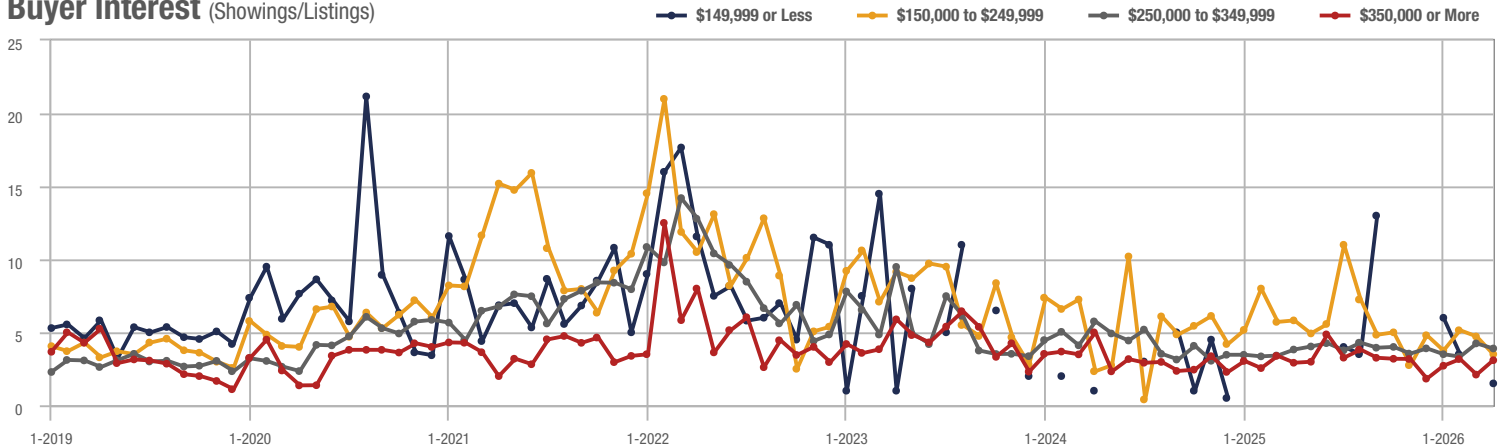
## Zip Code 27332

Price Range	Total Showings			Buyer Interest (Showings/Listings)			Managed Listings		
	April 2026	Year-Over-Year Change	Month-Over-Month Change	April 2026	Year-Over-Year Change	Month-Over-Month Change	April 2026	Year-Over-Year Change	Month-Over-Month Change
\$149,999 or Less	3	—	—	1.5	—	—	2	—	+ 100.0%
\$150,000 to \$249,999	21	- 69.1%	- 36.4%	3.5	- 39.7%	- 25.8%	6	- 53.8%	- 14.3%
\$250,000 to \$349,999	111	- 41.3%	+ 2.8%	3.9	+ 2.6%	- 8.2%	30	- 48.3%	+ 7.1%
\$350,000 or More	182	+ 19.0%	+ 73.3%	3.1	+ 6.9%	+ 47.0%	63	- 4.5%	+ 14.5%
<b>Total</b>	<b>317</b>	<b>- 22.7%</b>	<b>+ 28.9%</b>	<b>3.3</b>	<b>+ 4.9%</b>	<b>+ 16.1%</b>	<b>101</b>	<b>- 26.3%</b>	<b>+ 11.0%</b>

### Showings



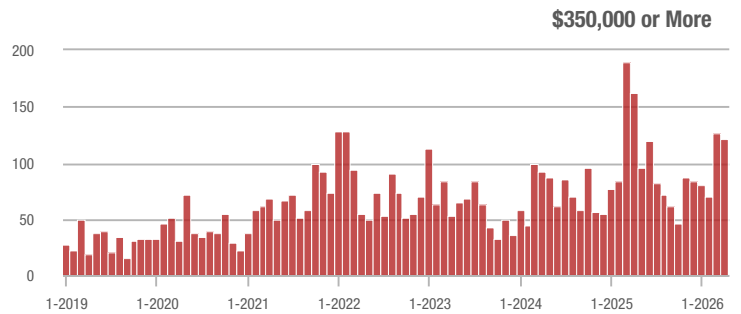
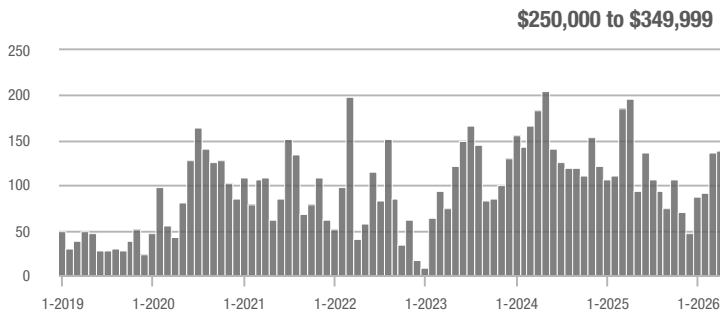
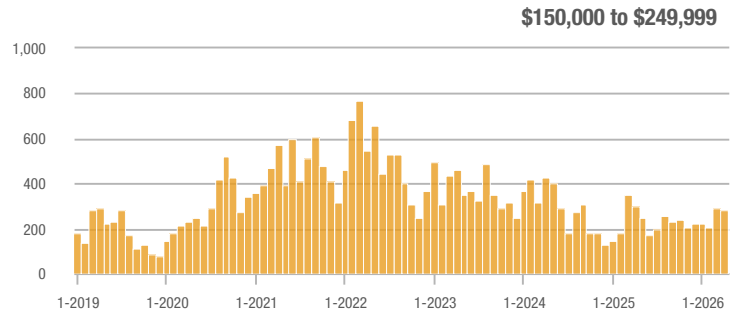
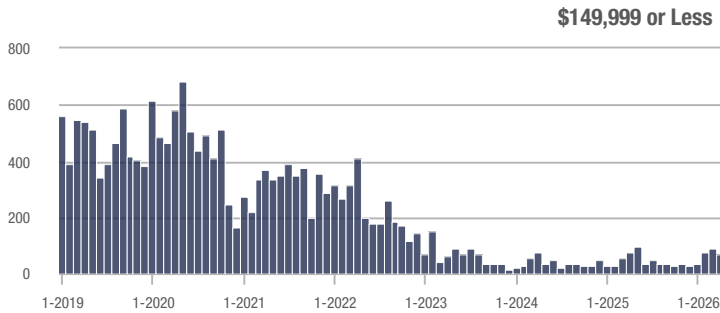
### Buyer Interest (Showings/Listings)



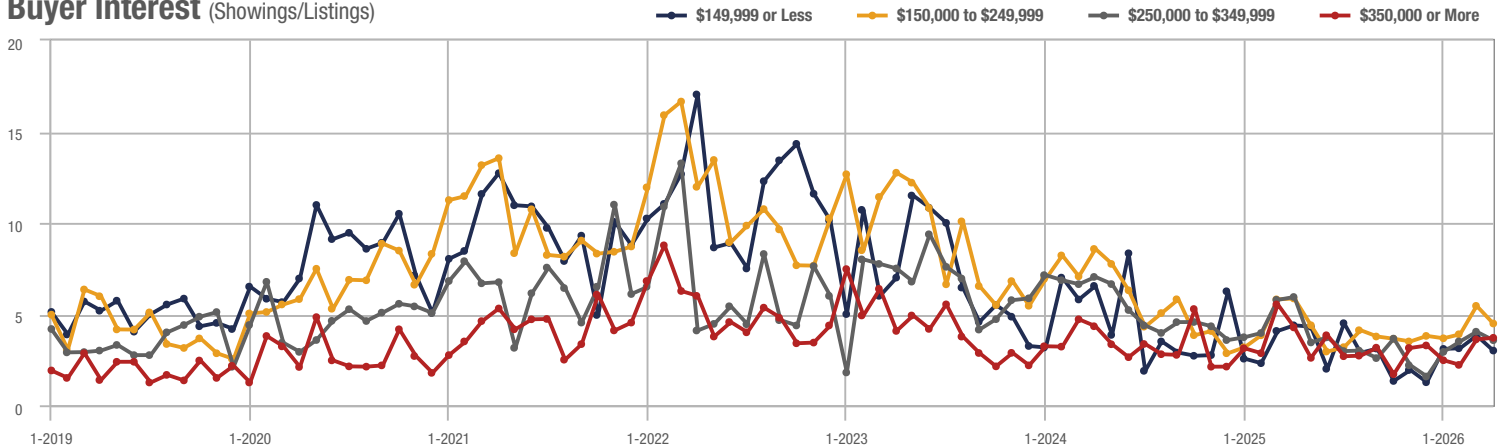
## Zip Code 28303

Price Range	Total Showings			Buyer Interest (Showings/Listings)			Managed Listings		
	April 2026	Year-Over-Year Change	Month-Over-Month Change	April 2026	Year-Over-Year Change	Month-Over-Month Change	April 2026	Year-Over-Year Change	Month-Over-Month Change
\$149,999 or Less	65	- 5.0%	- 27.0%	3.0	- 31.8%	- 21.5%	19	- 9.5%	- 13.6%
\$150,000 to \$249,999	284	- 5.0%	- 2.4%	4.5	- 23.7%	- 17.7%	66	+ 20.0%	+ 10.0%
\$250,000 to \$349,999	138	- 29.6%	+ 1.5%	3.6	- 39.0%	- 11.5%	41	+ 7.9%	+ 20.6%
\$350,000 or More	121	- 25.3%	- 4.0%	3.7	- 14.0%	+ 2.4%	34	- 12.8%	- 5.6%
<b>Total</b>	<b>608</b>	<b>- 16.7%</b>	<b>- 5.3%</b>	<b>3.9</b>	<b>- 20.4%</b>	<b>- 10.0%</b>	<b>160</b>	<b>+ 4.6%</b>	<b>+ 5.3%</b>

### Showings



### Buyer Interest (Showings/Listings)

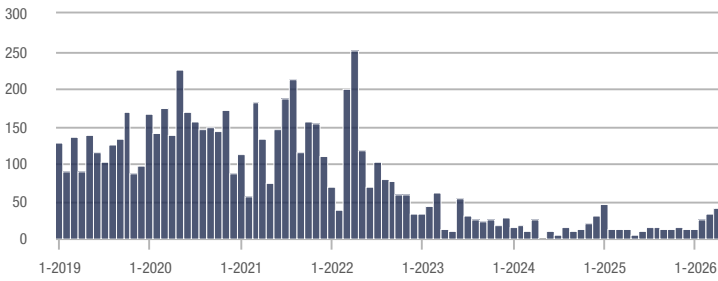


## Spring Lake

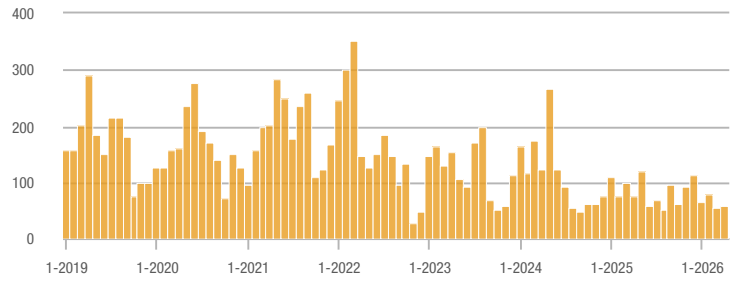
Price Range	Total Showings			Buyer Interest (Showings/Listings)			Managed Listings		
	April 2026	Year-Over-Year Change	Month-Over-Month Change	April 2026	Year-Over-Year Change	Month-Over-Month Change	April 2026	Year-Over-Year Change	Month-Over-Month Change
\$149,999 or Less	42	- 22.4%	+ 23.5%	4.6	- 34.3%	+ 40.8%	9	+ 350.0%	0.0%
\$150,000 to \$249,999	59	- 22.4%	+ 11.3%	3.4	- 37.0%	+ 12.2%	18	+ 20.0%	0.0%
\$250,000 to \$349,999	96	- 42.2%	- 31.9%	2.4	- 29.4%	- 32.9%	51	- 20.3%	- 7.3%
\$350,000 or More	111	+ 8.8%	+ 35.4%	1.9	- 24.0%	+ 25.4%	62	+ 37.8%	+ 14.8%
<b>Total</b>	<b>308</b>	<b>- 14.0%</b>	<b>- 0.6%</b>	<b>2.5</b>	<b>- 22.6%</b>	<b>- 3.5%</b>	<b>140</b>	<b>+ 11.1%</b>	<b>+ 2.9%</b>

### Showings

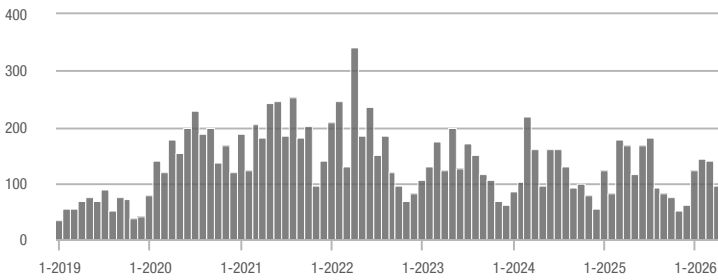
\$149,999 or Less



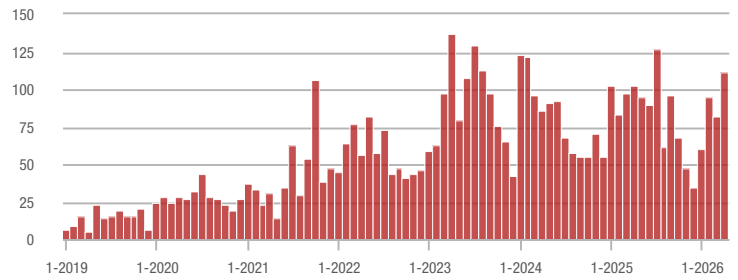
\$150,000 to \$249,999



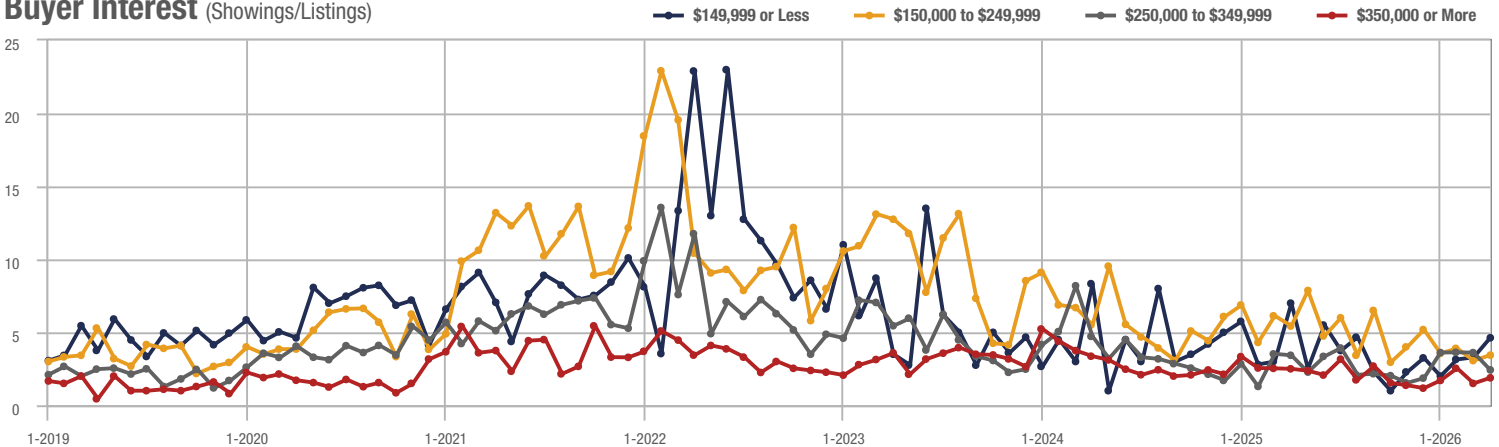
\$250,000 to \$349,999



\$350,000 or More



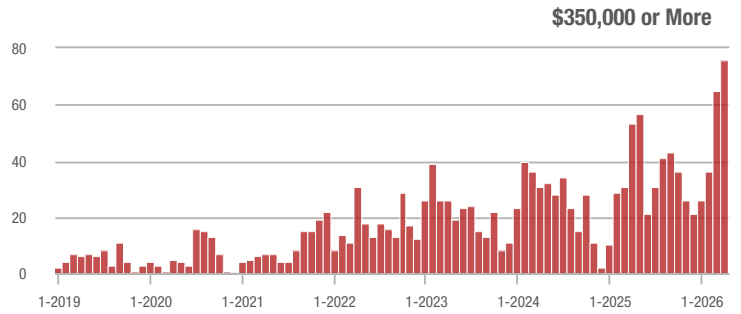
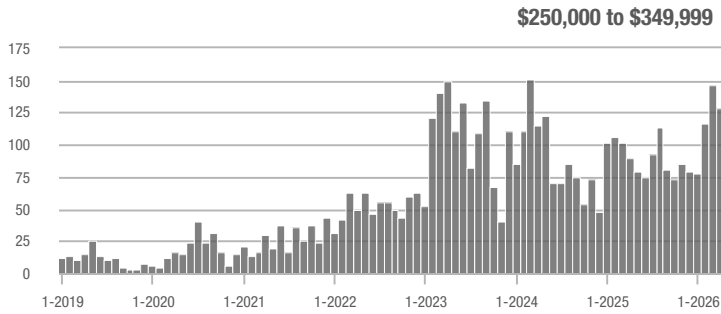
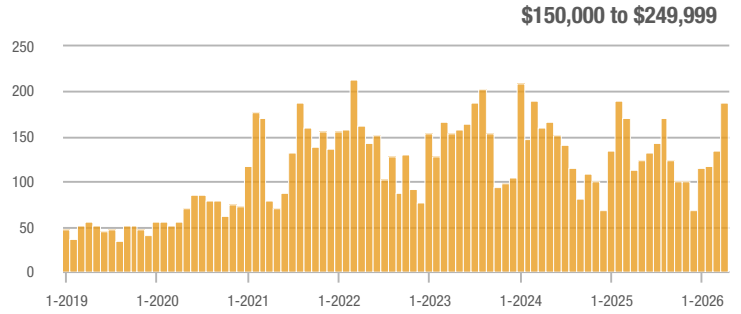
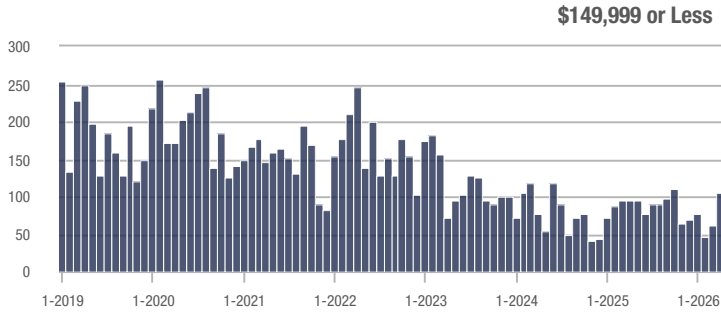
### Buyer Interest (Showings/Listings)



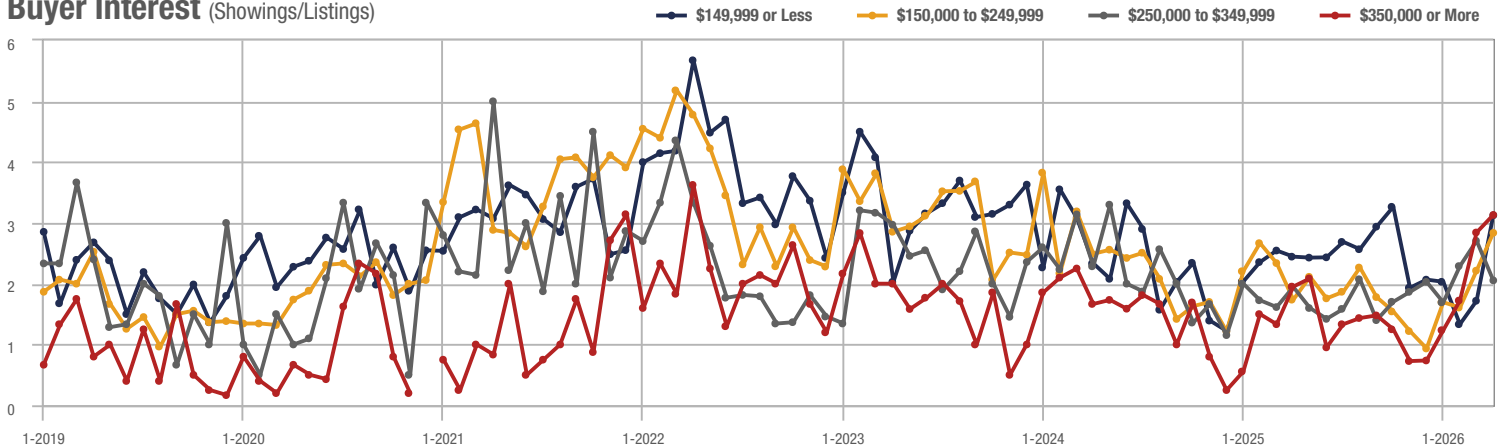
# Robeson County

Price Range	Total Showings			Buyer Interest (Showings/Listings)			Managed Listings		
	April 2026	Year-Over-Year Change	Month-Over-Month Change	April 2026	Year-Over-Year Change	Month-Over-Month Change	April 2026	Year-Over-Year Change	Month-Over-Month Change
\$149,999 or Less	106	+ 64.0%	+ 73.8%	3.1	+ 29.2%	+ 81.8%	42	- 12.5%	- 4.5%
\$150,000 to \$249,999	187	+ 64.0%	+ 39.6%	2.8	+ 64.7%	+ 28.1%	76	- 3.8%	- 2.6%
\$250,000 to \$349,999	128	+ 42.2%	- 12.9%	2.1	+ 10.5%	- 24.1%	59	- 1.7%	- 4.8%
\$350,000 or More	76	+ 43.4%	+ 16.9%	3.1	+ 55.0%	+ 10.1%	29	- 6.5%	- 3.3%
<b>Total</b>	<b>497</b>	<b>+ 41.2%</b>	<b>+ 22.1%</b>	<b>2.8</b>	<b>+ 49.4%</b>	<b>+ 26.9%</b>	<b>206</b>	<b>- 5.5%</b>	<b>- 3.7%</b>

## Showings



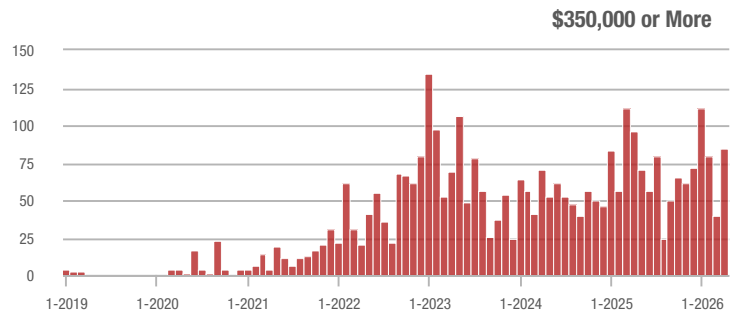
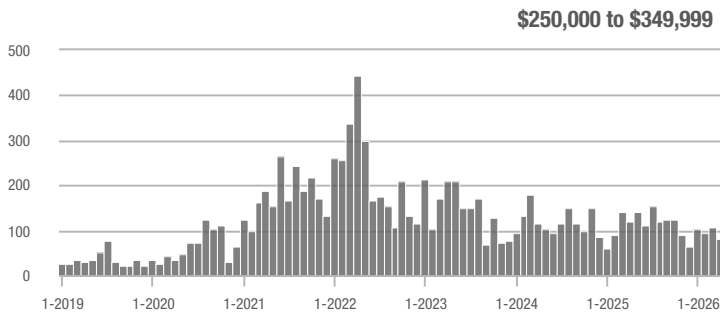
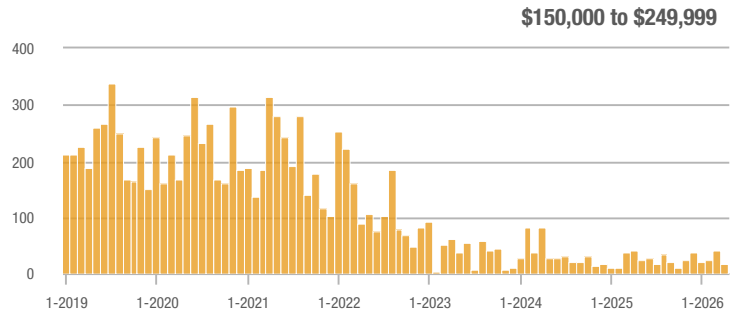
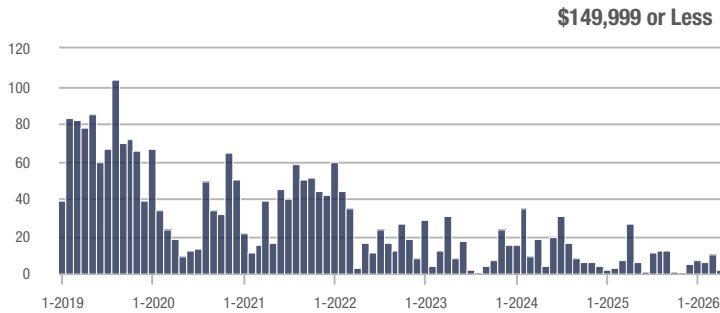
## Buyer Interest (Showings/Listings)



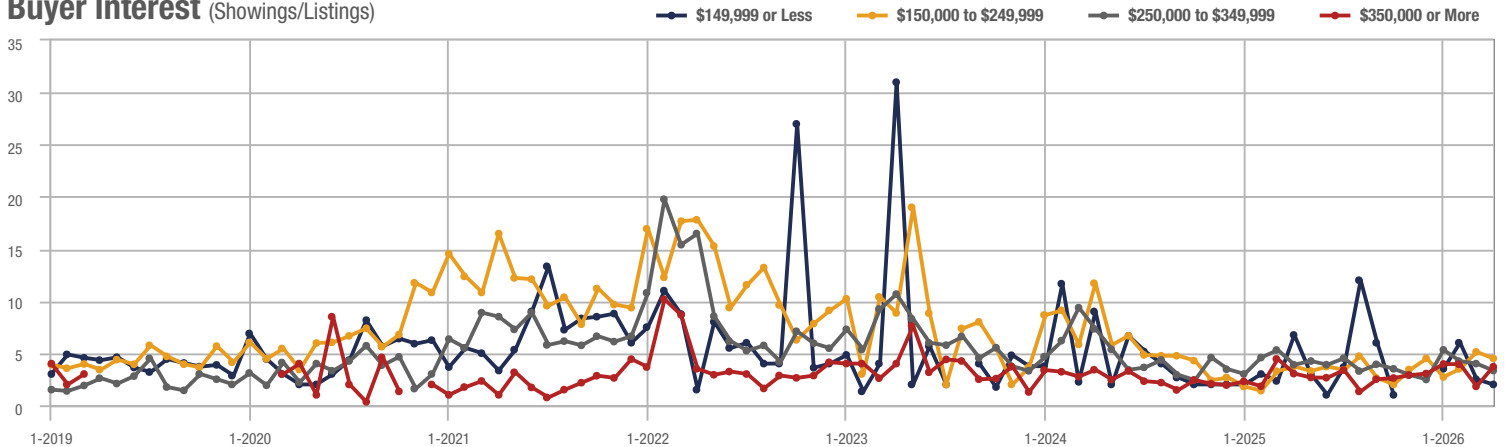
## Cameron

Price Range	Total Showings			Buyer Interest (Showings/Listings)			Managed Listings		
	April 2026	Year-Over-Year Change	Month-Over-Month Change	April 2026	Year-Over-Year Change	Month-Over-Month Change	April 2026	Year-Over-Year Change	Month-Over-Month Change
\$149,999 or Less	2	- 57.1%	- 80.0%	2.0	- 70.6%	- 20.0%	1	- 75.0%	- 75.0%
\$150,000 to \$249,999	18	- 57.1%	- 56.1%	4.5	+ 21.6%	- 12.2%	4	- 66.7%	- 50.0%
\$250,000 to \$349,999	81	- 31.4%	- 25.0%	3.3	- 15.4%	- 16.7%	26	- 29.7%	- 18.8%
\$350,000 or More	84	- 12.5%	+ 110.0%	3.7	+ 23.3%	+ 104.1%	28	- 31.7%	+ 7.7%
<b>Total</b>	<b>185</b>	<b>- 34.6%</b>	<b>- 7.0%</b>	<b>3.6</b>	<b>+ 4.2%</b>	<b>+ 10.3%</b>	<b>59</b>	<b>- 37.2%</b>	<b>- 15.7%</b>

### Showings



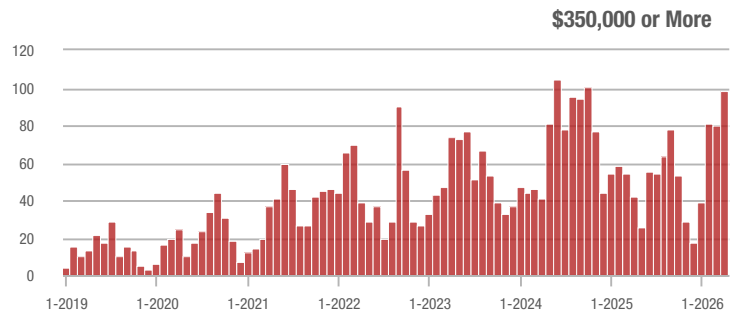
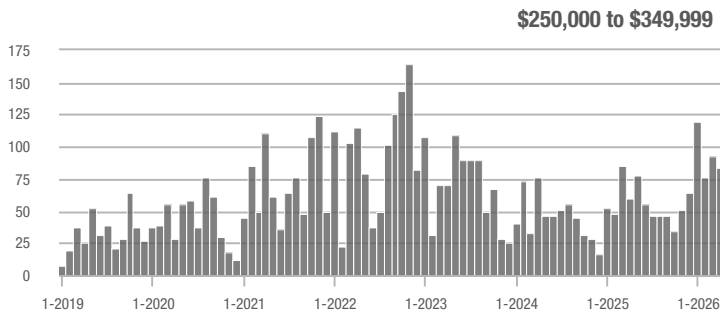
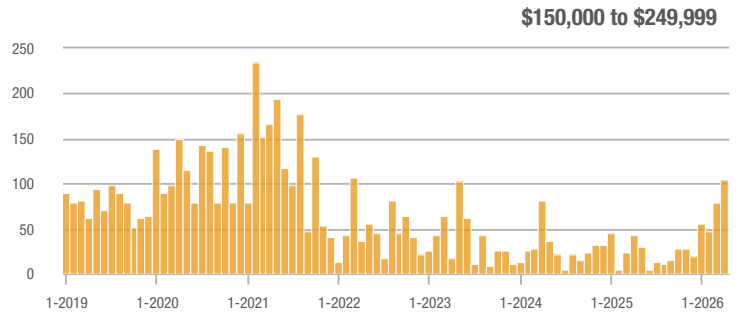
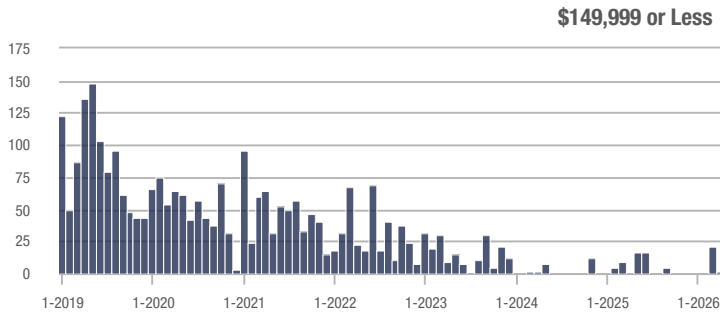
### Buyer Interest (Showings/Listings)



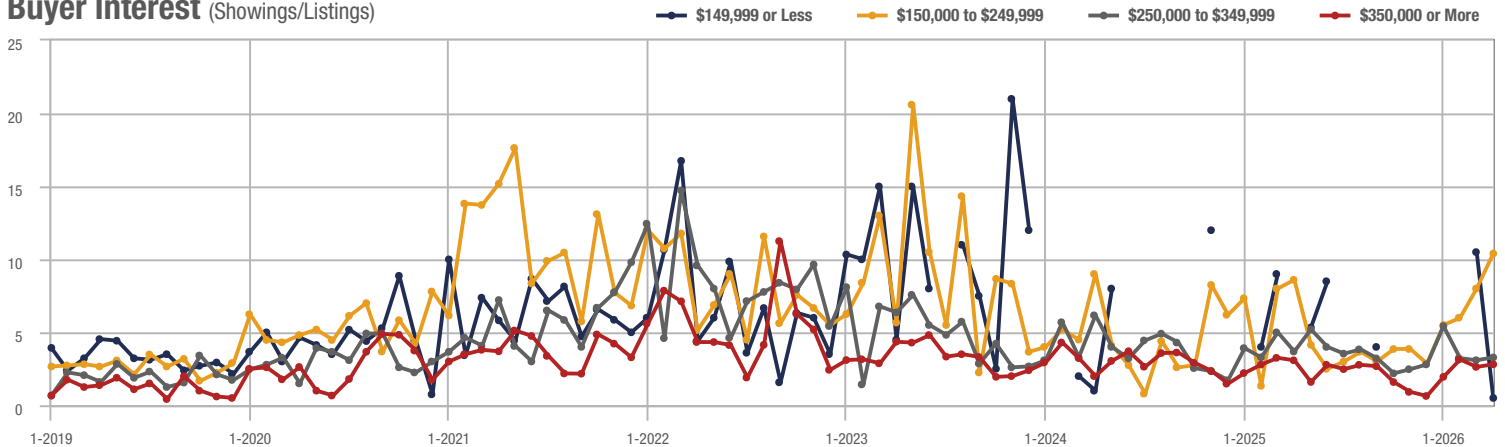
## Zip Code 27330

Price Range	Total Showings			Buyer Interest (Showings/Listings)			Managed Listings		
	April 2026	Year-Over-Year Change	Month-Over-Month Change	April 2026	Year-Over-Year Change	Month-Over-Month Change	April 2026	Year-Over-Year Change	Month-Over-Month Change
\$149,999 or Less	1	—	- 95.2%	0.5	—	- 95.2%	2	—	0.0%
\$150,000 to \$249,999	104	+ 141.9%	+ 30.0%	10.4	+ 20.9%	+ 30.0%	10	+ 100.0%	0.0%
\$250,000 to \$349,999	84	+ 40.0%	- 8.7%	3.3	- 10.8%	+ 6.0%	36	+ 100.0%	- 10.0%
\$350,000 or More	98	+ 133.3%	+ 22.5%	2.8	- 9.7%	+ 6.7%	40	+ 110.5%	+ 8.1%
<b>Total</b>	<b>287</b>	<b>+ 97.9%</b>	<b>+ 5.1%</b>	<b>4.1</b>	<b>- 5.5%</b>	<b>+ 6.3%</b>	<b>88</b>	<b>+ 109.5%</b>	<b>- 1.1%</b>

### Showings



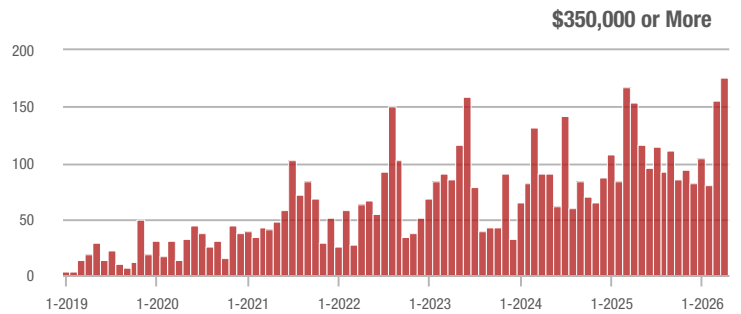
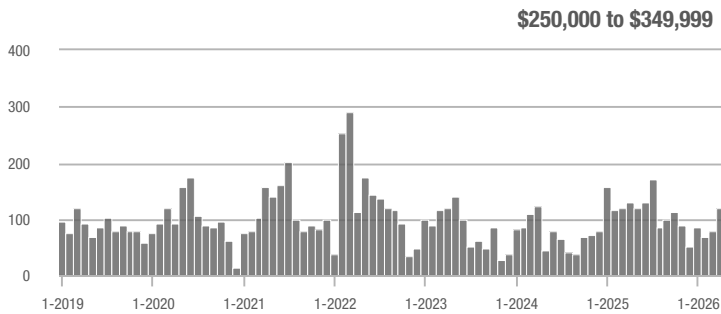
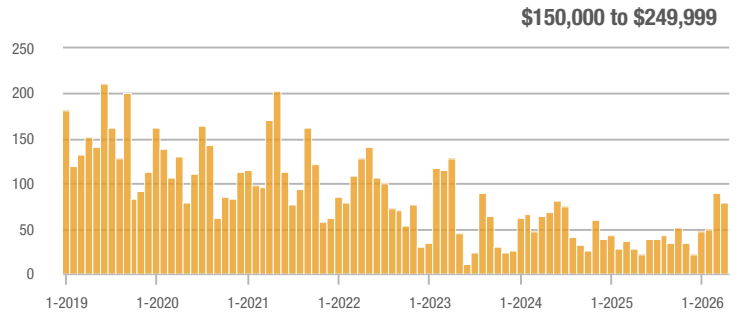
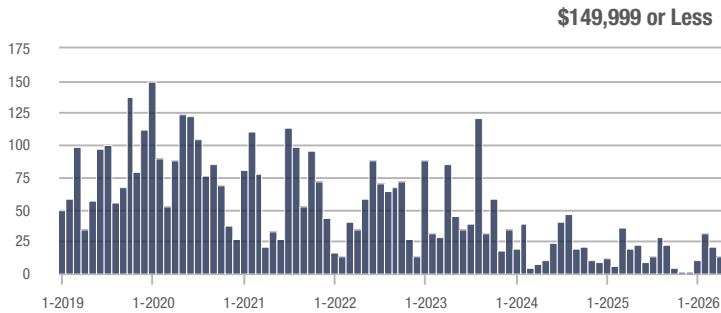
### Buyer Interest (Showings/Listings)



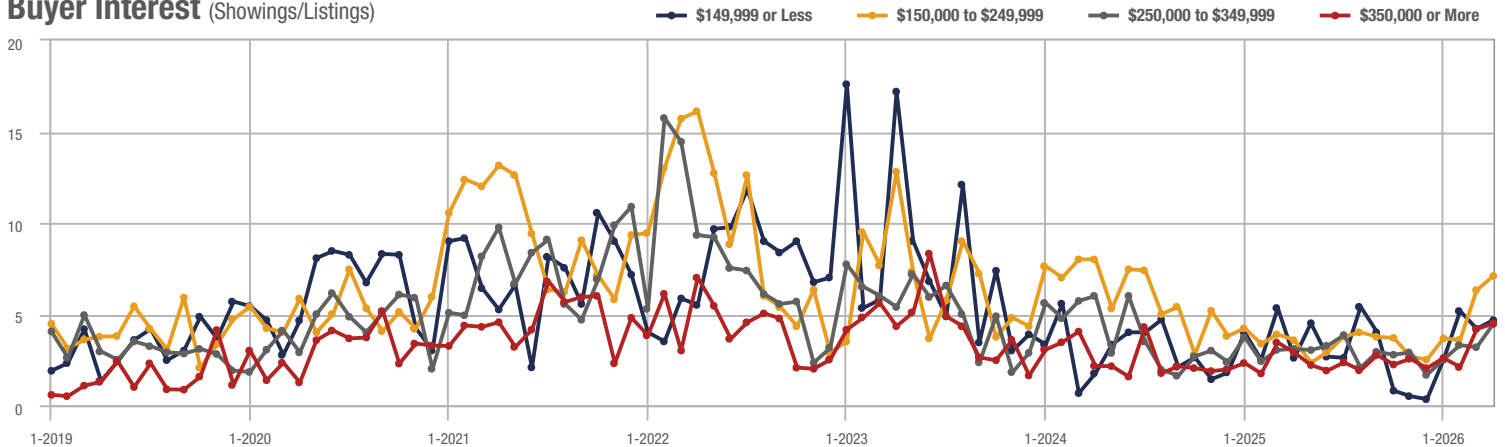
# Zip Code 28312

Price Range	Total Showings			Buyer Interest (Showings/Listings)			Managed Listings		
	April 2026	Year-Over-Year Change	Month-Over-Month Change	April 2026	Year-Over-Year Change	Month-Over-Month Change	April 2026	Year-Over-Year Change	Month-Over-Month Change
\$149,999 or Less	14	+ 196.3%	- 33.3%	4.7	+ 80.8%	+ 11.1%	3	- 57.1%	- 40.0%
\$150,000 to \$249,999	80	+ 196.3%	- 11.1%	7.1	+ 97.2%	+ 12.4%	14	+ 55.6%	- 12.5%
\$250,000 to \$349,999	121	- 6.9%	+ 55.1%	4.5	+ 45.2%	+ 40.0%	27	- 49.1%	0.0%
\$350,000 or More	176	+ 14.3%	+ 13.5%	4.5	+ 55.2%	+ 7.5%	44	- 36.2%	0.0%
<b>Total</b>	<b>391</b>	<b>+ 18.1%</b>	<b>+ 13.7%</b>	<b>4.9</b>	<b>+ 85.2%</b>	<b>+ 18.8%</b>	<b>88</b>	<b>- 36.2%</b>	<b>- 4.3%</b>

## Showings



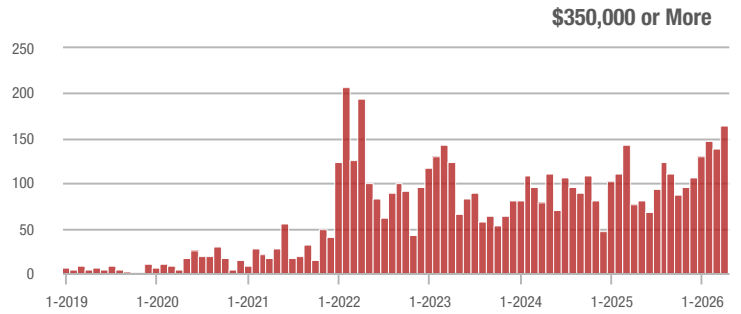
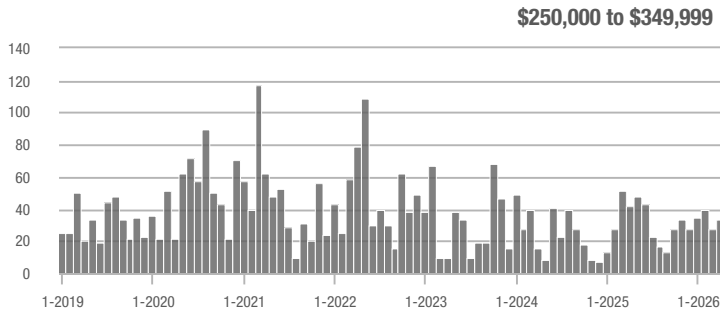
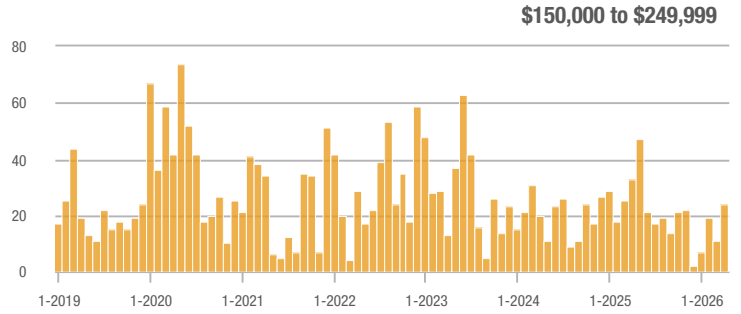
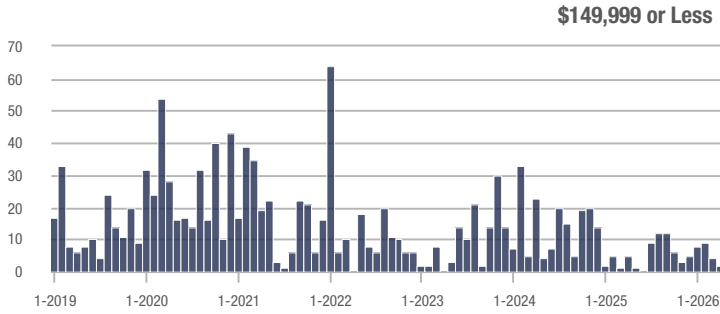
## Buyer Interest (Showings/Listings)



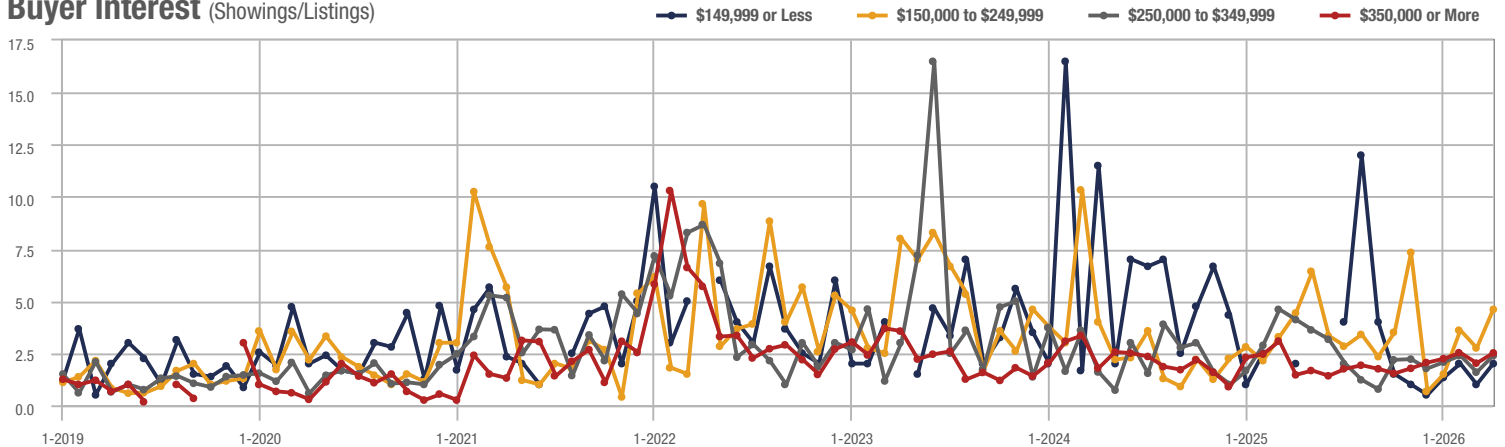
## Moore County

Price Range	Total Showings			Buyer Interest (Showings/Listings)			Managed Listings		
	April 2026	Year-Over-Year Change	Month-Over-Month Change	April 2026	Year-Over-Year Change	Month-Over-Month Change	April 2026	Year-Over-Year Change	Month-Over-Month Change
\$149,999 or Less	2	- 27.3%	- 50.0%	2.0	0.0%	+ 100.0%	1	- 50.0%	- 75.0%
\$150,000 to \$249,999	24	- 27.3%	+ 118.2%	4.6	+ 4.5%	+ 67.3%	6	- 25.0%	- 14.3%
\$250,000 to \$349,999	34	- 19.0%	+ 21.4%	2.4	- 41.5%	+ 50.1%	21	+ 5.0%	- 32.3%
\$350,000 or More	165	+ 114.3%	+ 19.6%	2.5	+ 66.7%	+ 24.3%	87	+ 13.0%	- 13.9%
<b>Total</b>	<b>225</b>	<b>+ 43.3%</b>	<b>+ 24.3%</b>	<b>2.6</b>	<b>+ 33.3%</b>	<b>+ 54.6%</b>	<b>115</b>	<b>+ 7.5%</b>	<b>- 19.6%</b>

### Showings



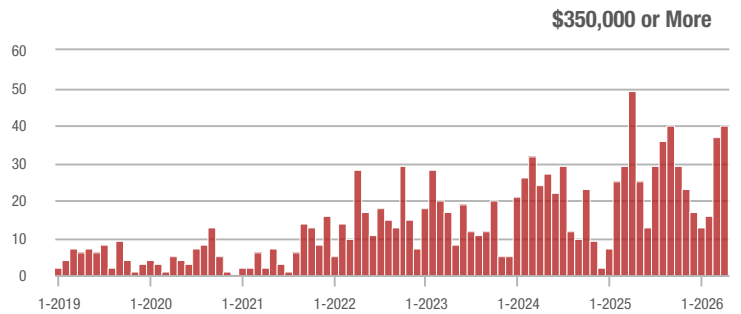
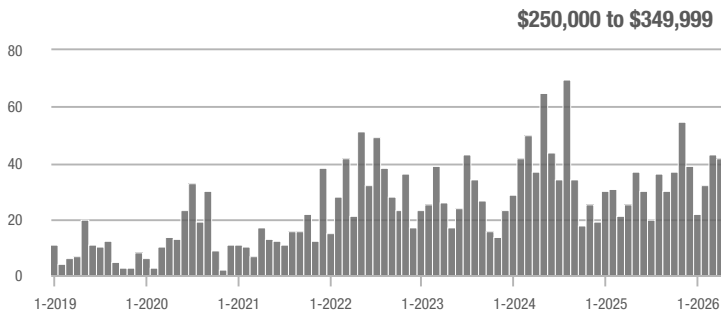
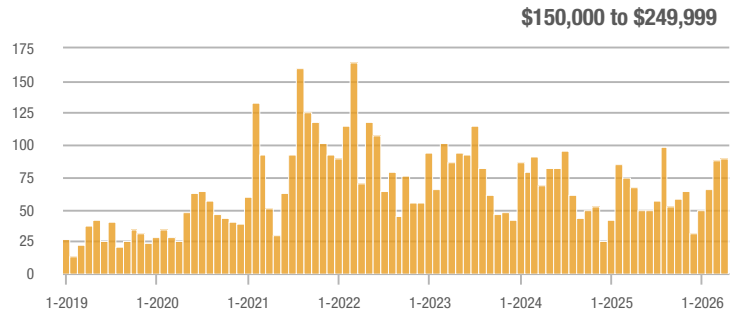
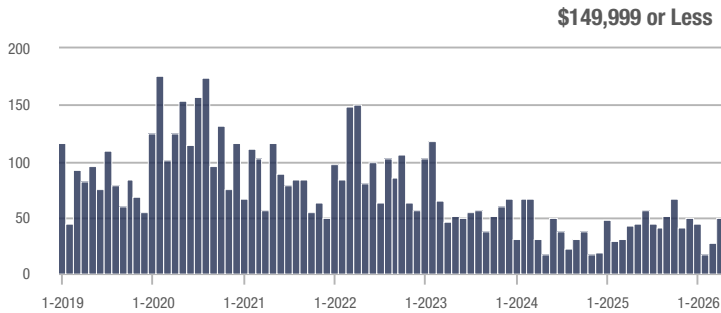
### Buyer Interest (Showings/Listings)



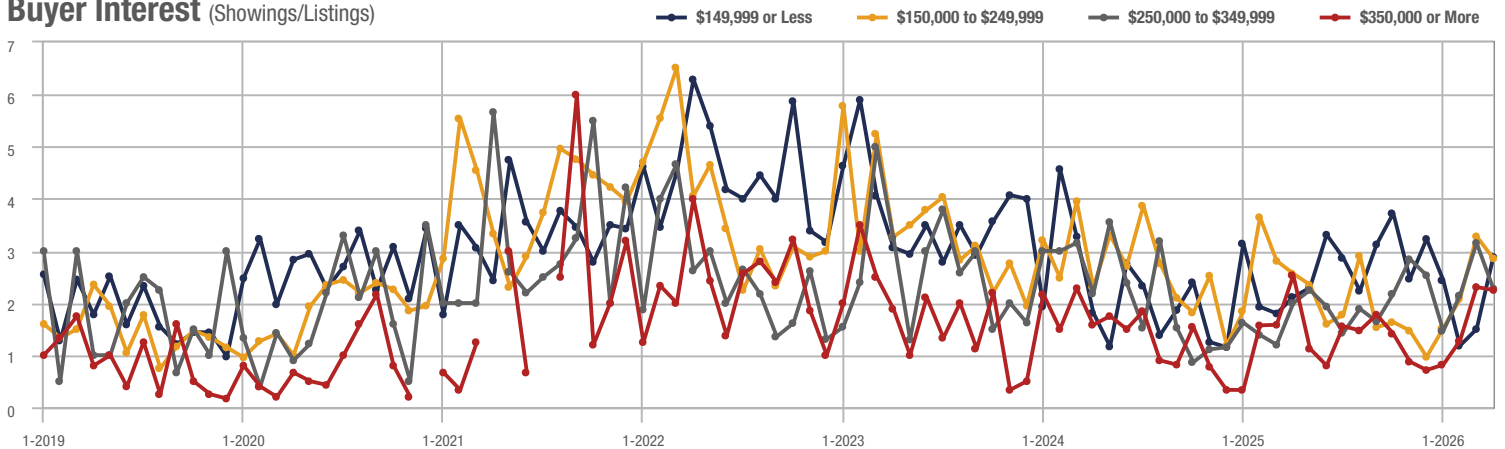
## Lumberton

Price Range	Total Showings			Buyer Interest (Showings/Listings)			Managed Listings		
	April 2026	Year-Over-Year Change	Month-Over-Month Change	April 2026	Year-Over-Year Change	Month-Over-Month Change	April 2026	Year-Over-Year Change	Month-Over-Month Change
\$149,999 or Less	50	+ 32.8%	+ 78.6%	2.9	+ 38.1%	+ 92.2%	20	- 9.1%	0.0%
\$150,000 to \$249,999	89	+ 32.8%	+ 1.1%	2.9	+ 11.5%	- 12.9%	37	+ 8.8%	+ 8.8%
\$250,000 to \$349,999	42	+ 68.0%	- 2.3%	2.3	+ 15.0%	- 27.8%	22	+ 46.7%	+ 29.4%
\$350,000 or More	40	- 18.4%	+ 8.1%	2.3	- 8.0%	- 2.5%	19	- 17.4%	0.0%
<b>Total</b>	<b>221</b>	<b>+ 20.1%</b>	<b>+ 12.8%</b>	<b>2.6</b>	<b>+ 15.2%</b>	<b>+ 3.6%</b>	<b>98</b>	<b>+ 4.3%</b>	<b>+ 8.9%</b>

### Showings



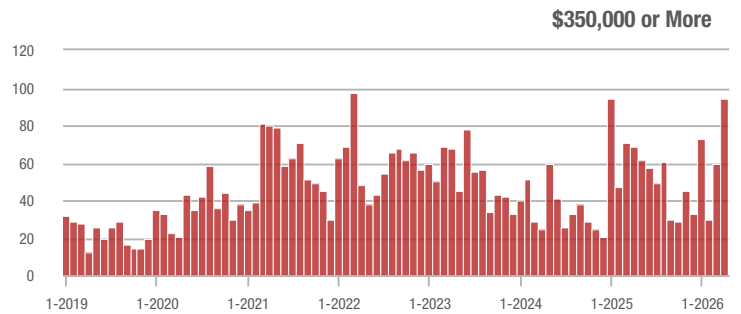
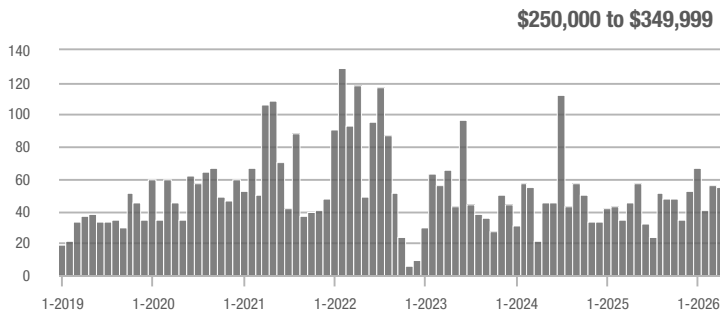
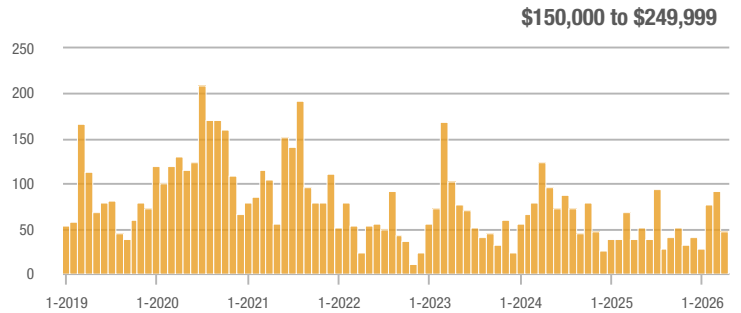
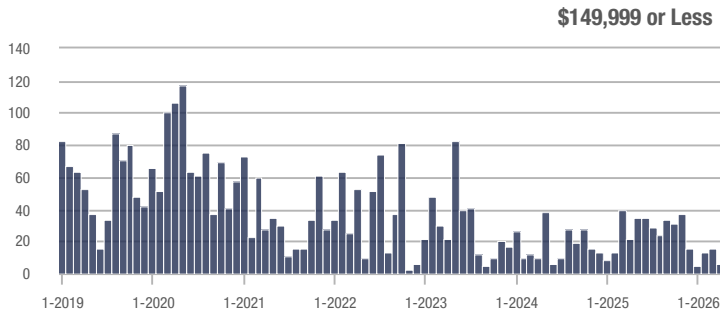
### Buyer Interest (Showings/Listings)



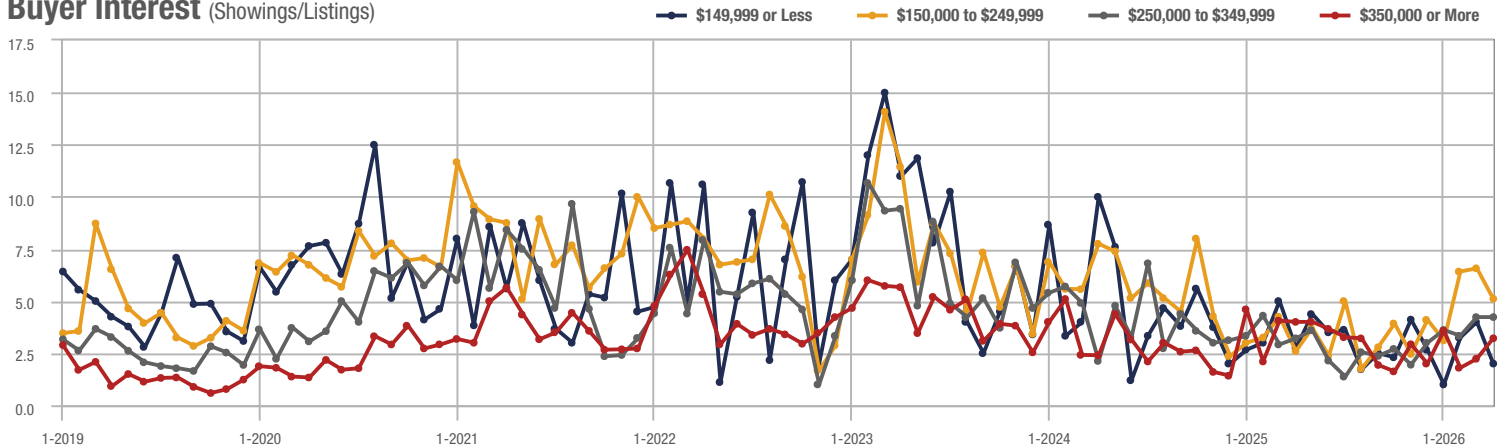
## Zip Code 28305

Price Range	Total Showings			Buyer Interest (Showings/Listings)			Managed Listings		
	April 2026	Year-Over-Year Change	Month-Over-Month Change	April 2026	Year-Over-Year Change	Month-Over-Month Change	April 2026	Year-Over-Year Change	Month-Over-Month Change
\$149,999 or Less	6	+ 20.5%	- 62.5%	2.0	- 28.6%	- 50.0%	3	- 62.5%	- 25.0%
\$150,000 to \$249,999	47	+ 20.5%	- 48.9%	5.1	+ 96.2%	- 22.2%	10	- 33.3%	- 33.3%
\$250,000 to \$349,999	55	+ 22.2%	- 1.8%	4.2	+ 31.3%	0.0%	13	- 13.3%	- 7.1%
\$350,000 or More	94	+ 36.2%	+ 59.3%	3.2	- 20.0%	+ 44.1%	29	+ 52.6%	- 3.3%
<b>Total</b>	<b>202</b>	<b>+ 15.4%</b>	<b>- 9.4%</b>	<b>3.7</b>	<b>+ 19.6%</b>	<b>+ 3.8%</b>	<b>55</b>	<b>- 3.5%</b>	<b>- 12.7%</b>

### Showings



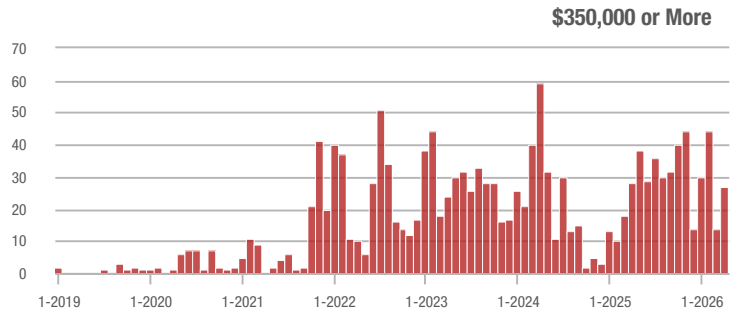
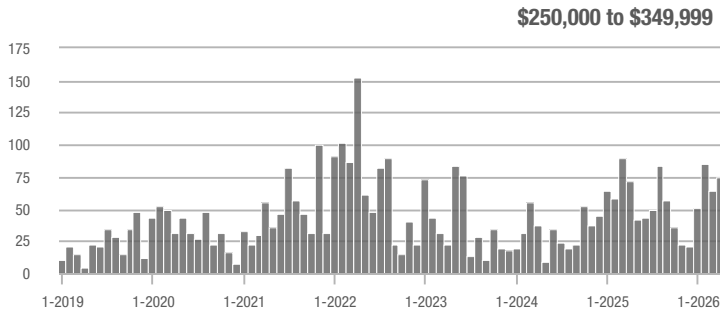
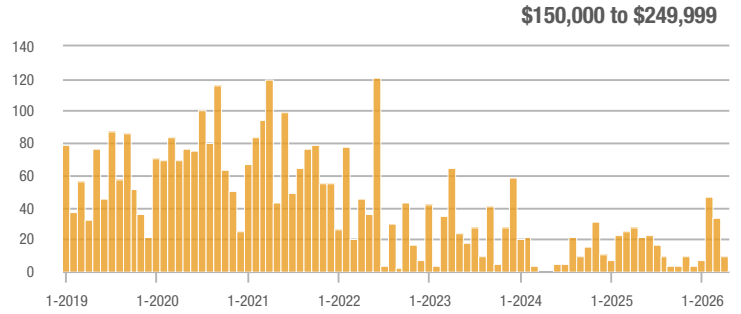
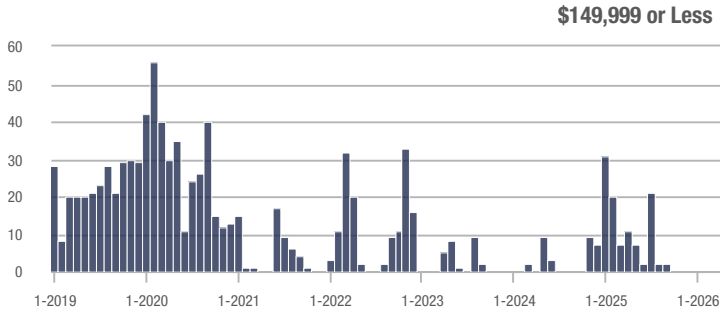
### Buyer Interest (Showings/Listings)



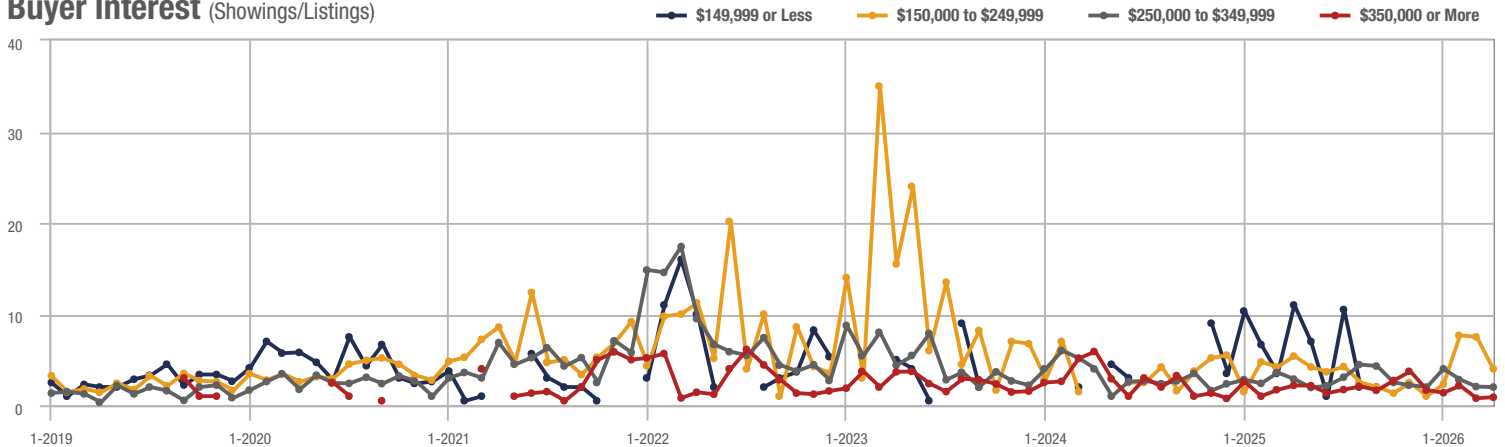
## Lillington

Price Range	Total Showings			Buyer Interest (Showings/Listings)			Managed Listings		
	April 2026	Year-Over-Year Change	Month-Over-Month Change	April 2026	Year-Over-Year Change	Month-Over-Month Change	April 2026	Year-Over-Year Change	Month-Over-Month Change
\$149,999 or Less	0	—	—	—	—	—	0	—	—
\$150,000 to \$249,999	10	- 64.3%	- 69.7%	4.0	- 25.9%	- 46.7%	3	- 57.1%	- 40.0%
\$250,000 to \$349,999	75	+ 4.2%	+ 17.2%	2.0	- 31.0%	- 2.3%	47	+ 34.3%	- 16.1%
\$350,000 or More	27	- 3.6%	+ 92.9%	0.9	- 59.1%	+ 13.4%	30	+ 87.5%	+ 15.4%
<b>Total</b>	<b>112</b>	<b>- 19.4%</b>	<b>+ 0.9%</b>	<b>1.6</b>	<b>- 40.6%</b>	<b>+ 9.7%</b>	<b>80</b>	<b>+ 35.6%</b>	<b>- 8.0%</b>

### Showings



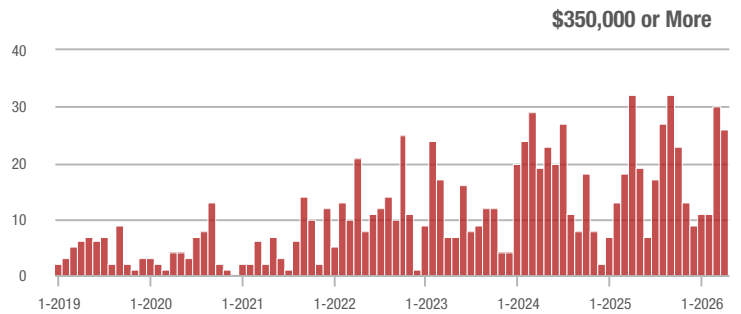
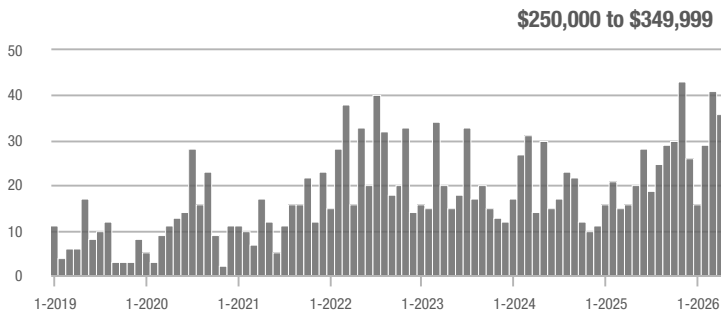
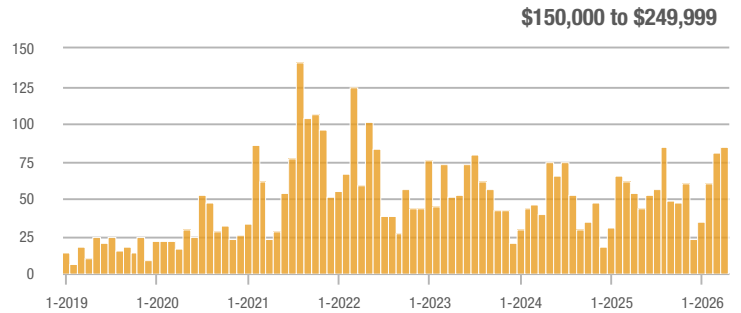
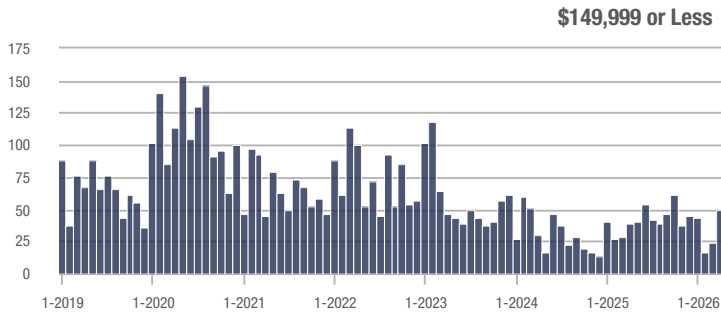
### Buyer Interest (Showings/Listings)



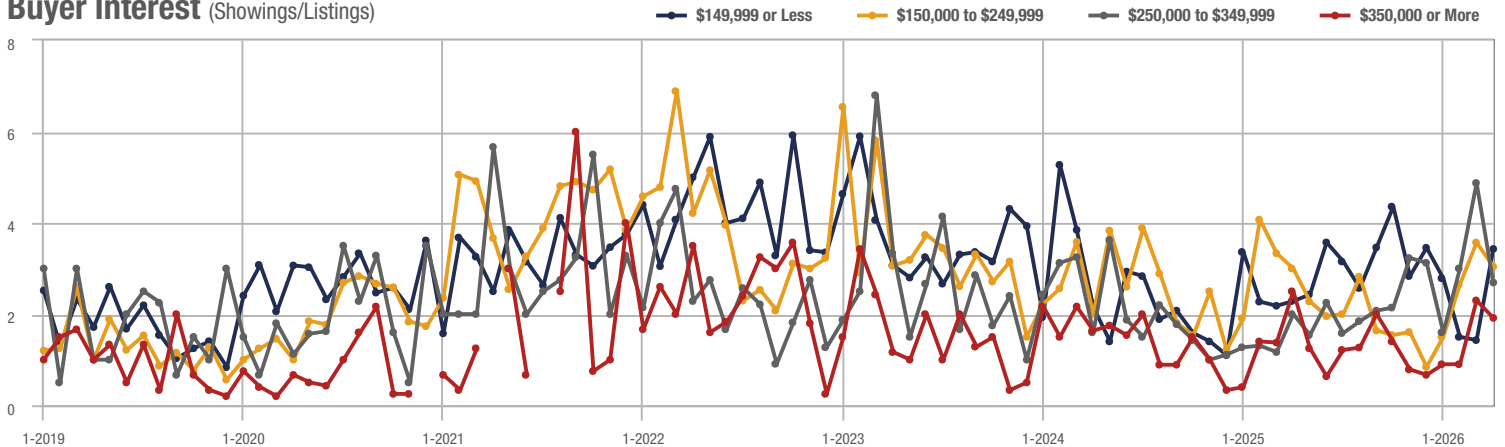
## Zip Code 28358

Price Range	Total Showings			Buyer Interest (Showings/Listings)			Managed Listings		
	April 2026	Year-Over-Year Change	Month-Over-Month Change	April 2026	Year-Over-Year Change	Month-Over-Month Change	April 2026	Year-Over-Year Change	Month-Over-Month Change
\$149,999 or Less	49	+ 57.4%	+ 104.2%	3.4	+ 47.8%	+ 140.0%	17	- 10.5%	- 5.6%
\$150,000 to \$249,999	85	+ 57.4%	+ 4.9%	3.0	0.0%	- 14.9%	34	+ 47.8%	+ 13.3%
\$250,000 to \$349,999	36	+ 125.0%	- 12.2%	2.7	+ 35.0%	- 44.8%	17	+ 88.9%	+ 41.7%
\$350,000 or More	26	- 18.8%	- 13.3%	1.9	- 24.0%	- 16.7%	14	- 6.7%	- 6.7%
<b>Total</b>	<b>196</b>	<b>+ 39.0%</b>	<b>+ 11.4%</b>	<b>2.8</b>	<b>+ 11.9%</b>	<b>+ 1.9%</b>	<b>82</b>	<b>+ 24.2%</b>	<b>+ 9.3%</b>

### Showings



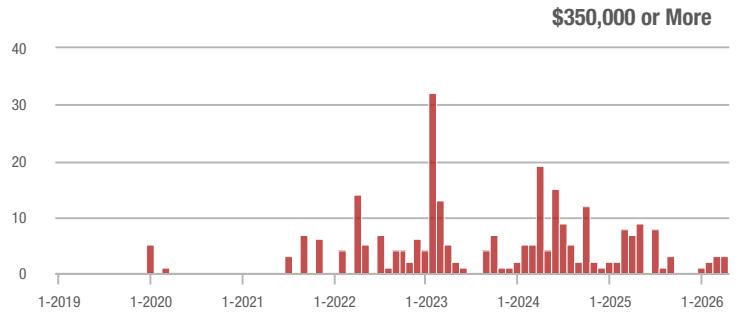
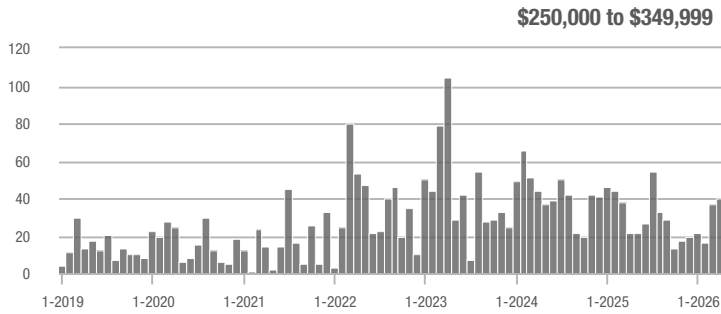
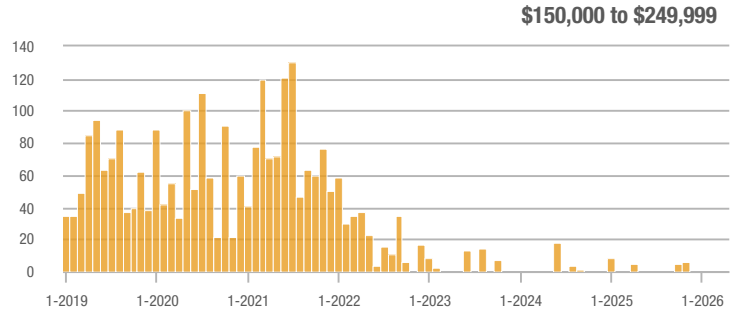
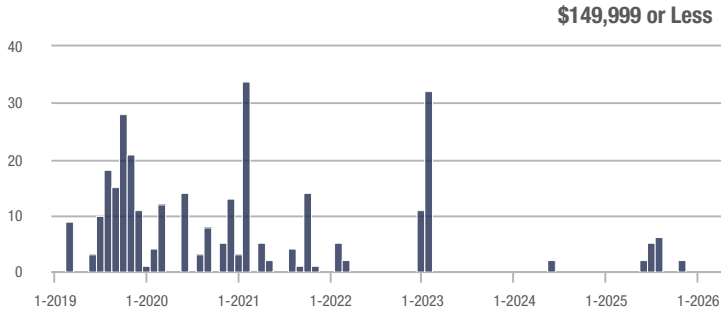
### Buyer Interest (Showings/Listings)



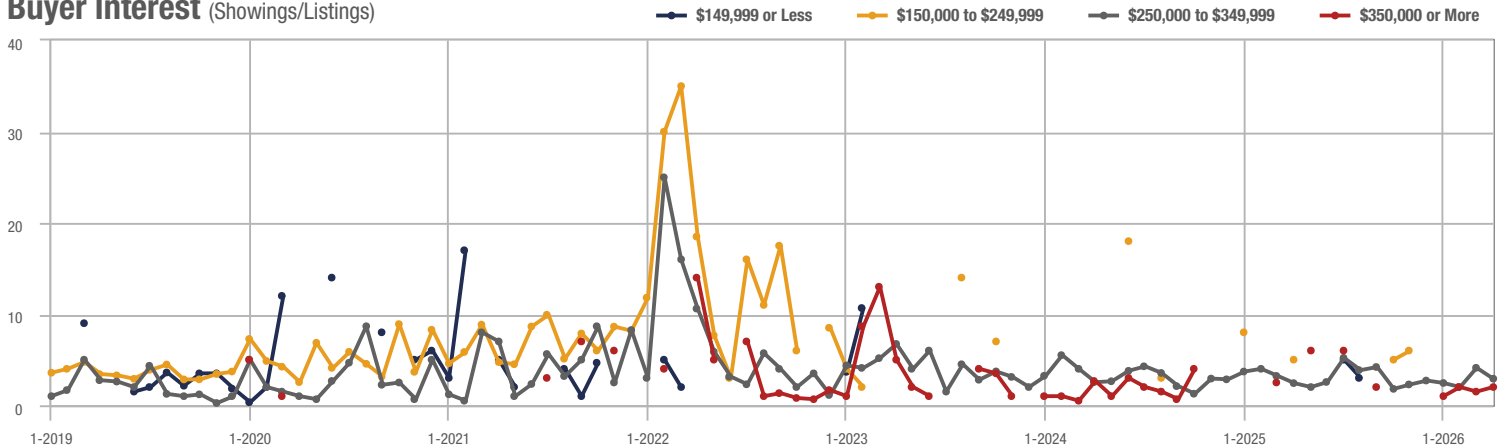
## Bunnlevel

Price Range	Total Showings			Buyer Interest (Showings/Listings)			Managed Listings		
	April 2026	Year-Over-Year Change	Month-Over-Month Change	April 2026	Year-Over-Year Change	Month-Over-Month Change	April 2026	Year-Over-Year Change	Month-Over-Month Change
\$149,999 or Less	0	—	—	—	—	—	0	—	—
\$150,000 to \$249,999	0	—	—	—	—	—	0	—	—
\$250,000 to \$349,999	40	+ 81.8%	+ 8.1%	2.9	+ 20.8%	- 29.1%	14	+ 16.7%	+ 27.3%
\$350,000 or More	3	- 57.1%	0.0%	2.0	—	+ 33.3%	2	0.0%	- 33.3%
<b>Total</b>	<b>43</b>	<b>+ 26.5%</b>	<b>+ 7.5%</b>	<b>2.8</b>	<b>+ 26.5%</b>	<b>- 5.9%</b>	<b>16</b>	<b>0.0%</b>	<b>+ 14.3%</b>

### Showings



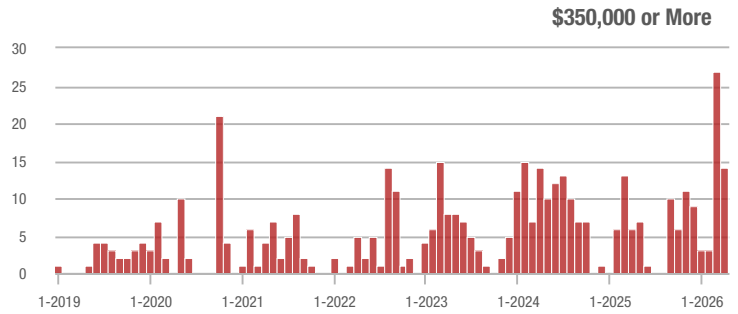
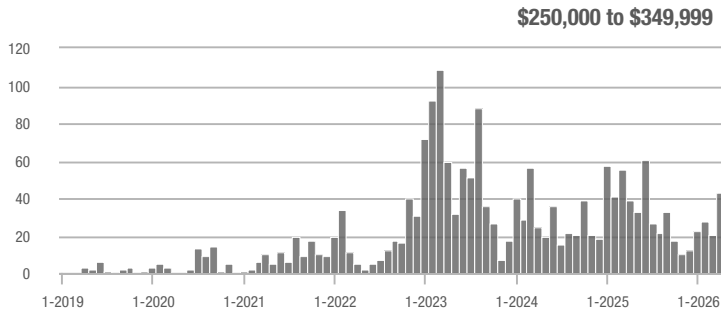
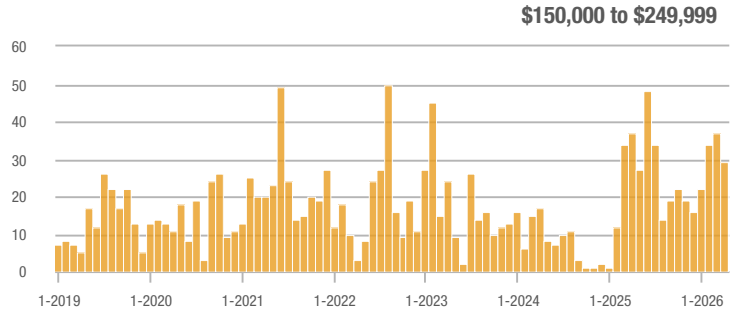
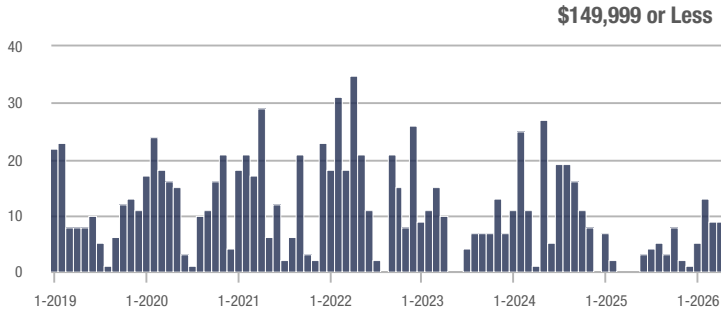
### Buyer Interest (Showings/Listings)



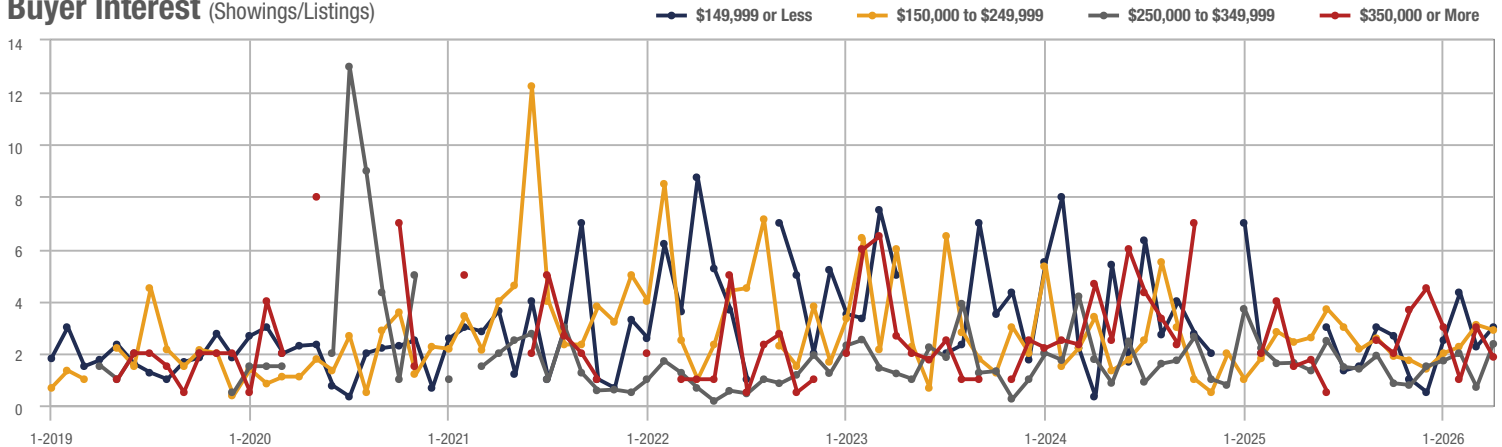
## Sampson County

Price Range	Total Showings			Buyer Interest (Showings/Listings)			Managed Listings		
	April 2026	Year-Over-Year Change	Month-Over-Month Change	April 2026	Year-Over-Year Change	Month-Over-Month Change	April 2026	Year-Over-Year Change	Month-Over-Month Change
\$149,999 or Less	9	—	0.0%	3.0	—	+ 33.3%	3	—	- 25.0%
\$150,000 to \$249,999	29	- 21.6%	- 21.6%	2.9	+ 20.8%	- 6.5%	12	- 29.4%	- 20.0%
\$250,000 to \$349,999	43	+ 10.3%	+ 104.8%	2.4	+ 50.0%	+ 236.7%	20	- 25.9%	- 9.1%
\$350,000 or More	14	+ 133.3%	- 48.1%	1.9	+ 26.7%	- 38.1%	11	+ 120.0%	- 15.4%
<b>Total</b>	<b>95</b>	<b>+ 15.9%</b>	<b>+ 1.1%</b>	<b>2.5</b>	<b>+ 23.4%</b>	<b>+ 18.6%</b>	<b>46</b>	<b>- 6.1%</b>	<b>- 14.8%</b>

### Showings



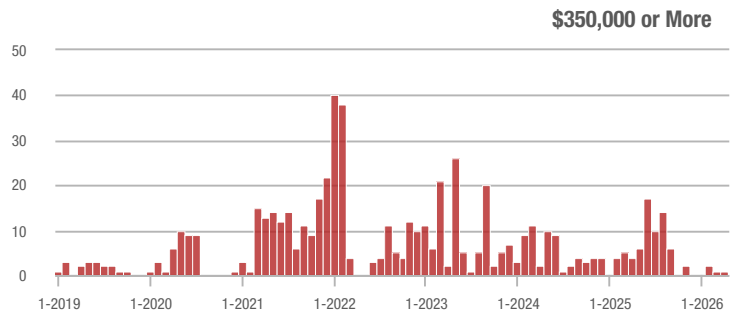
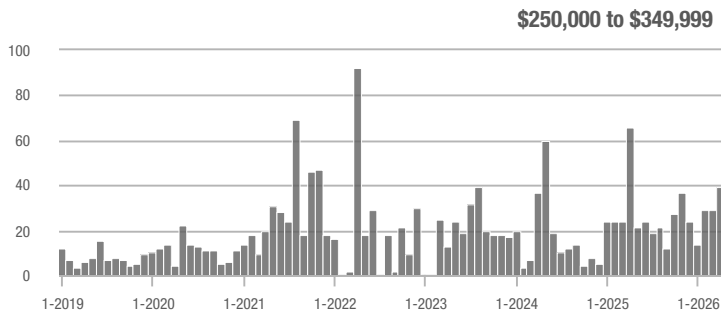
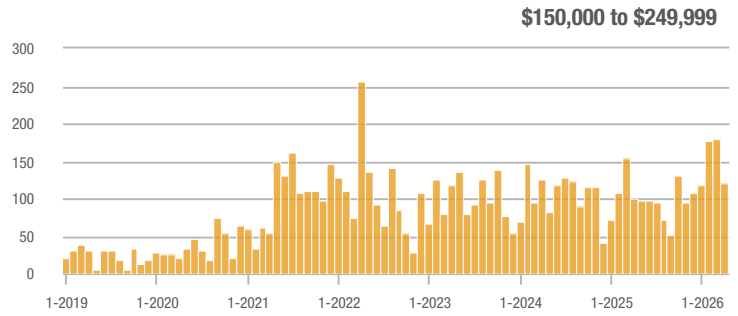
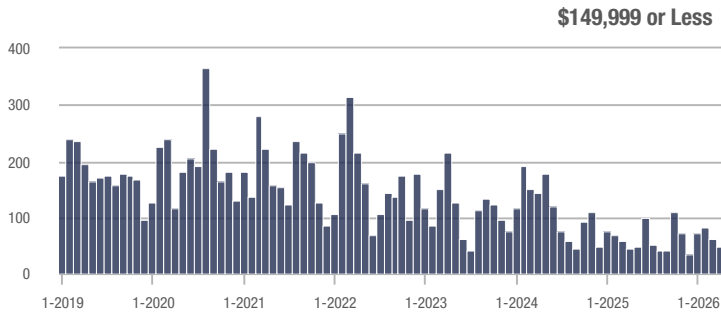
### Buyer Interest (Showings/Listings)



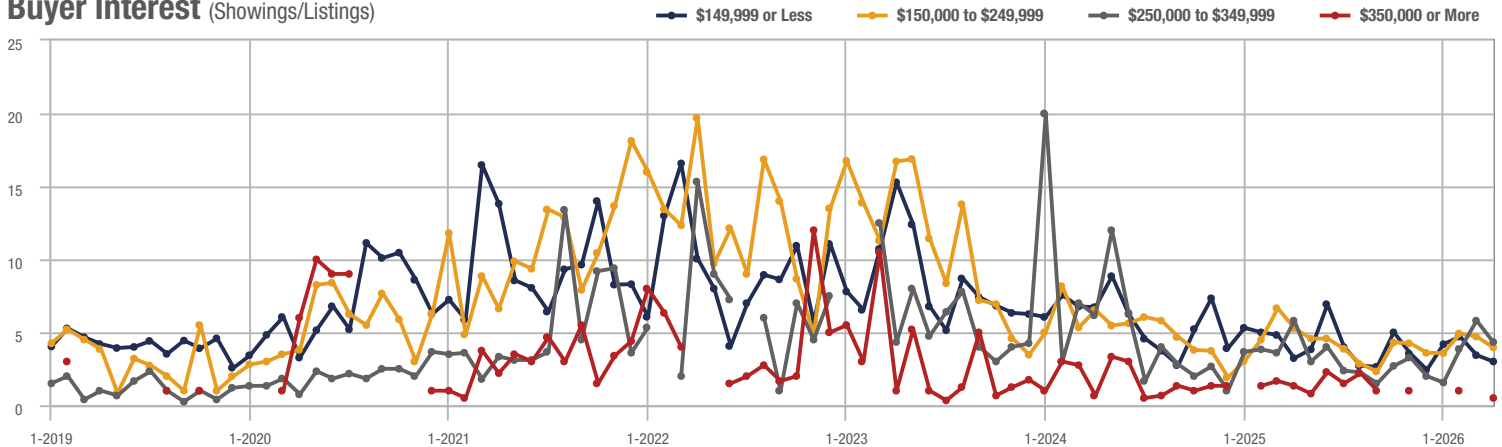
## Zip Code 28301

Price Range	Total Showings			Buyer Interest (Showings/Listings)			Managed Listings		
	April 2026	Year-Over-Year Change	Month-Over-Month Change	April 2026	Year-Over-Year Change	Month-Over-Month Change	April 2026	Year-Over-Year Change	Month-Over-Month Change
\$149,999 or Less	48	+ 18.8%	- 20.0%	3.0	- 6.3%	- 12.7%	19	+ 5.6%	- 5.0%
\$150,000 to \$249,999	120	+ 18.8%	- 33.3%	4.0	- 24.5%	- 15.8%	32	+ 45.5%	- 20.0%
\$250,000 to \$349,999	39	- 40.9%	+ 34.5%	4.3	- 25.9%	- 25.3%	9	- 25.0%	+ 50.0%
\$350,000 or More	1	- 75.0%	0.0%	0.5	- 61.5%	—	4	0.0%	+ 33.3%
<b>Total</b>	<b>208</b>	<b>- 4.1%</b>	<b>- 23.0%</b>	<b>3.6</b>	<b>- 16.1%</b>	<b>- 16.9%</b>	<b>64</b>	<b>+ 14.3%</b>	<b>- 7.2%</b>

### Showings



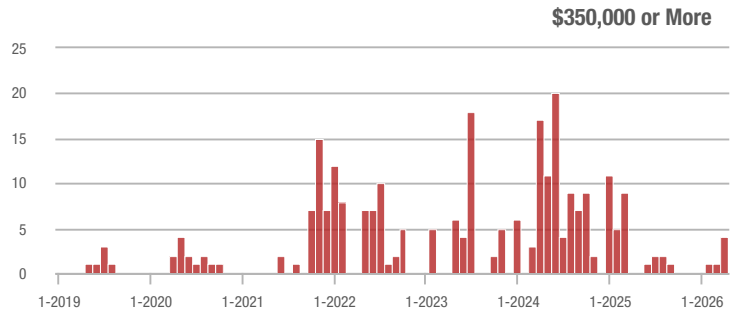
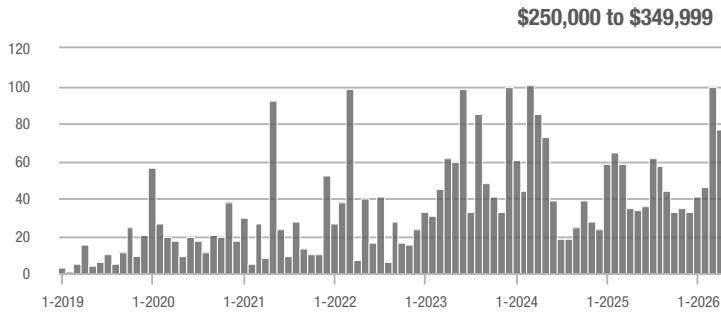
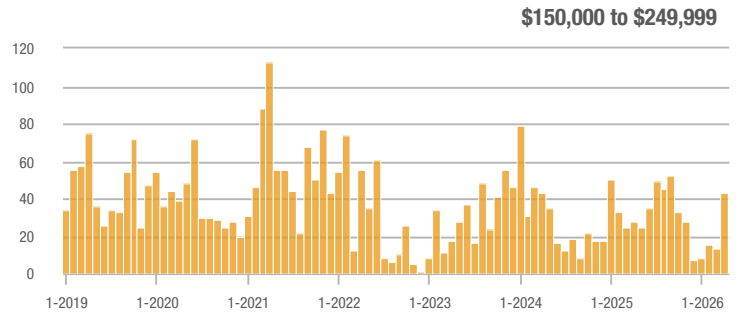
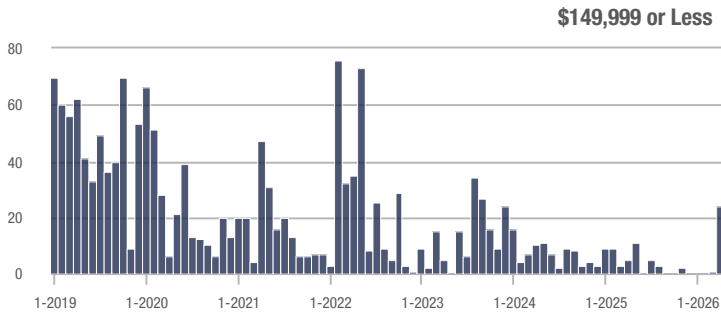
### Buyer Interest (Showings/Listings)



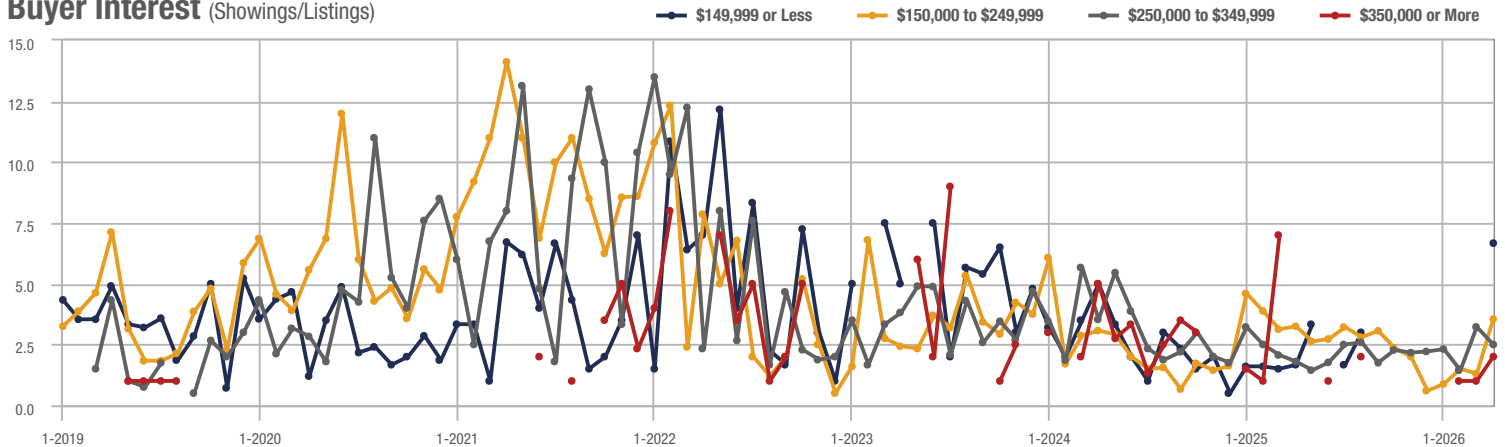
## Parkton

Price Range	Total Showings			Buyer Interest (Showings/Listings)			Managed Listings		
	April 2026	Year-Over-Year Change	Month-Over-Month Change	April 2026	Year-Over-Year Change	Month-Over-Month Change	April 2026	Year-Over-Year Change	Month-Over-Month Change
\$149,999 or Less	24	+ 53.6%	+ 2,300.0%	6.7	+ 294.1%	—	4	0.0%	+ 100.0%
\$150,000 to \$249,999	43	+ 53.6%	+ 230.8%	3.5	+ 6.1%	+ 172.7%	14	+ 16.7%	0.0%
\$250,000 to \$349,999	77	+ 120.0%	- 22.2%	2.5	+ 38.9%	- 22.4%	25	+ 13.6%	- 21.9%
\$350,000 or More	4	—	+ 300.0%	2.0	—	+ 100.0%	2	—	+ 100.0%
<b>Total</b>	<b>148</b>	<b>+ 117.6%</b>	<b>+ 29.8%</b>	<b>3.2</b>	<b>+ 83.8%</b>	<b>+ 41.4%</b>	<b>45</b>	<b>+ 18.4%</b>	<b>- 8.2%</b>

### Showings



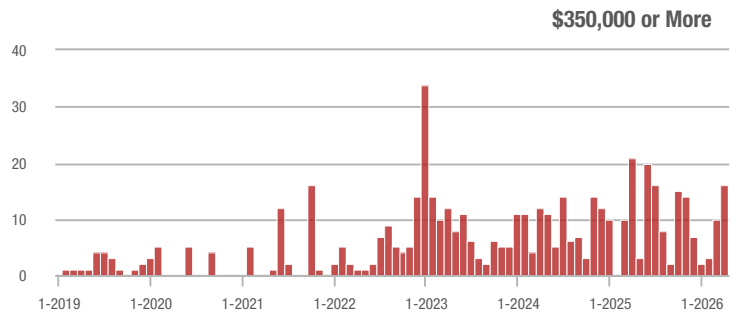
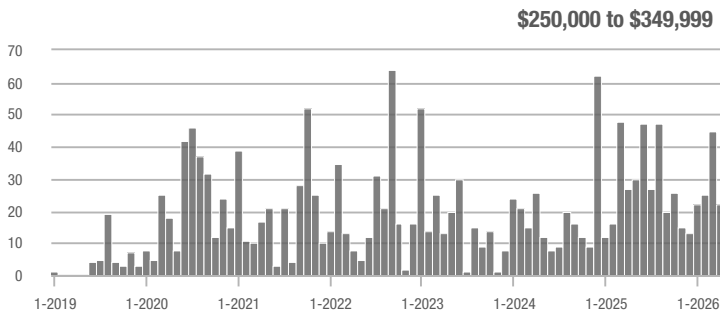
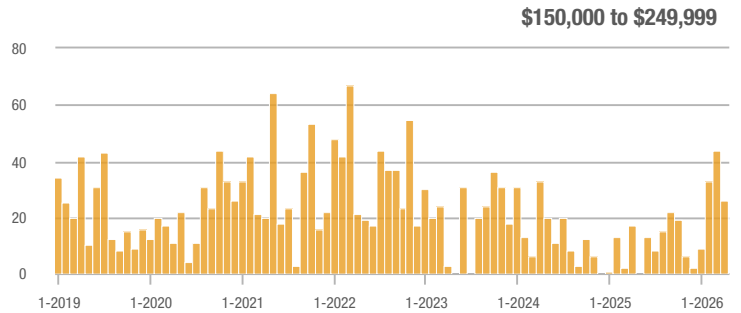
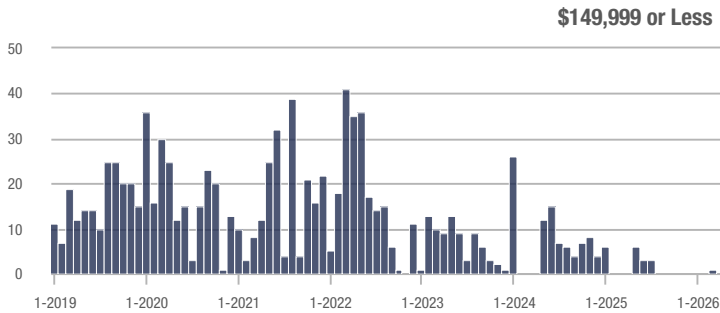
### Buyer Interest (Showings/Listings)



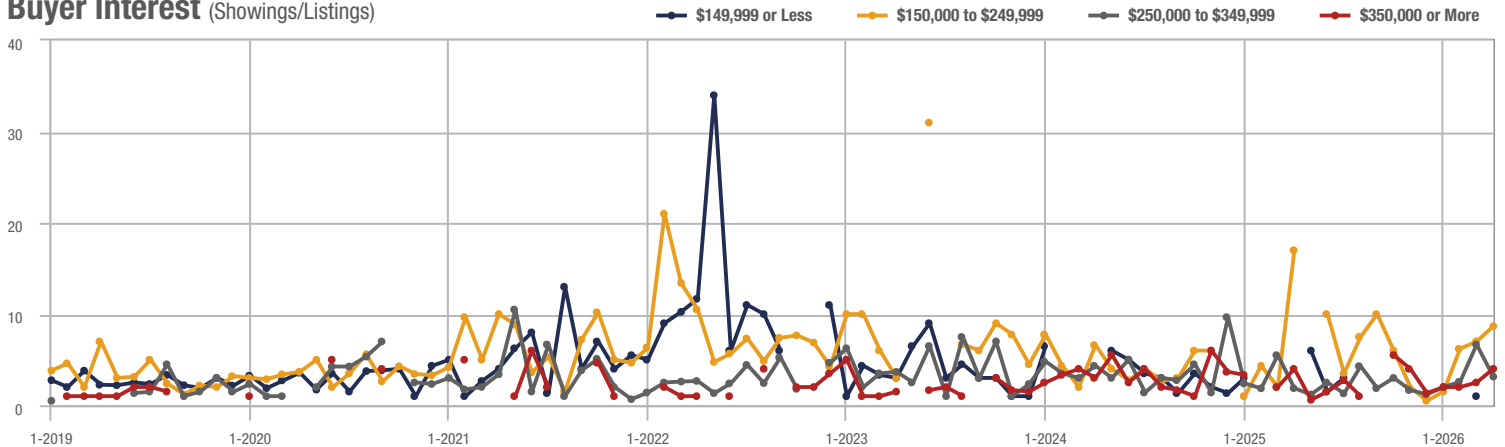
## Stedman

Price Range	Total Showings			Buyer Interest (Showings/Listings)			Managed Listings		
	April 2026	Year-Over-Year Change	Month-Over-Month Change	April 2026	Year-Over-Year Change	Month-Over-Month Change	April 2026	Year-Over-Year Change	Month-Over-Month Change
\$149,999 or Less	0	—	—	—	—	—	0	—	—
\$150,000 to \$249,999	26	+ 52.9%	- 40.9%	8.7	- 48.8%	+ 23.8%	3	+ 200.0%	- 57.1%
\$250,000 to \$349,999	22	- 18.5%	- 51.1%	3.1	+ 63.2%	- 52.9%	8	- 46.7%	+ 14.3%
\$350,000 or More	16	- 23.8%	+ 60.0%	4.0	0.0%	+ 60.0%	5	- 37.5%	0.0%
<b>Total</b>	<b>64</b>	<b>- 1.5%</b>	<b>- 36.0%</b>	<b>4.6</b>	<b>+ 47.7%</b>	<b>- 20.0%</b>	<b>16</b>	<b>- 33.3%</b>	<b>- 20.0%</b>

### Showings



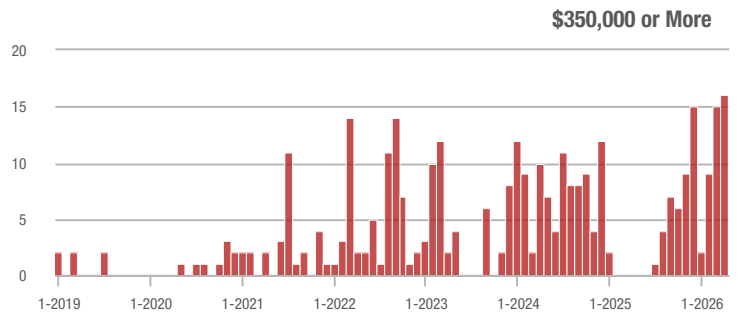
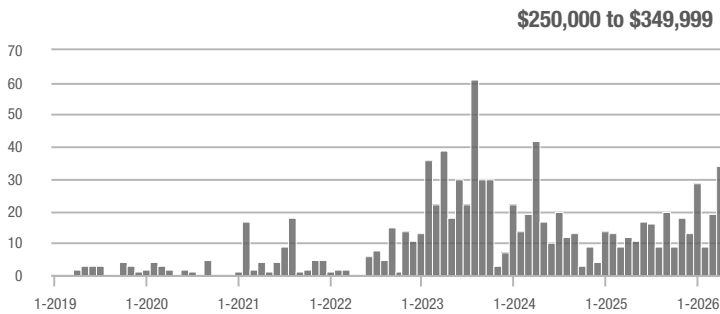
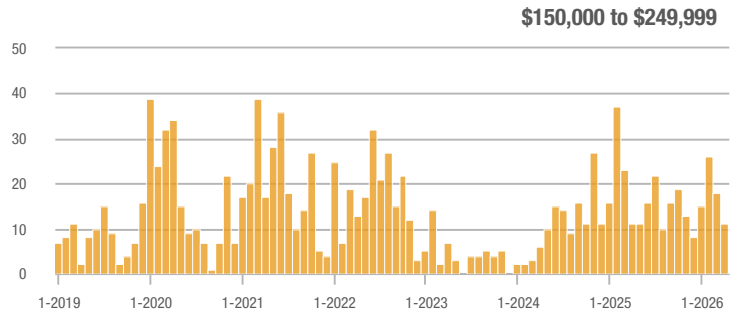
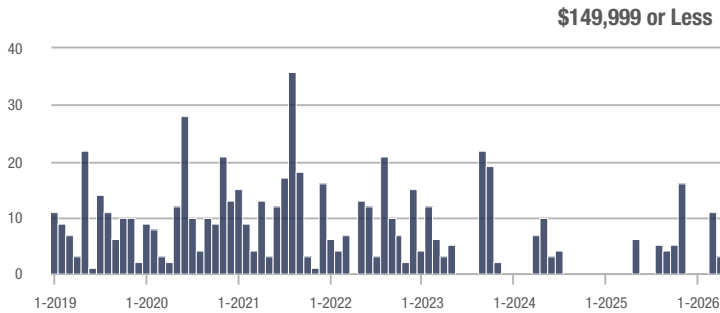
### Buyer Interest (Showings/Listings)



## Dunn

Price Range	Total Showings			Buyer Interest (Showings/Listings)			Managed Listings		
	April 2026	Year-Over-Year Change	Month-Over-Month Change	April 2026	Year-Over-Year Change	Month-Over-Month Change	April 2026	Year-Over-Year Change	Month-Over-Month Change
\$149,999 or Less	3	—	- 72.7%	3.0	—	- 72.7%	1	0.0%	0.0%
\$150,000 to \$249,999	11	0.0%	- 38.9%	2.8	+ 75.0%	- 23.6%	4	- 42.9%	- 20.0%
\$250,000 to \$349,999	34	+ 183.3%	+ 78.9%	2.0	- 16.7%	+ 75.0%	18	+ 125.0%	- 5.3%
\$350,000 or More	16	—	+ 6.7%	3.0	—	+ 50.0%	7	+ 250.0%	- 22.2%
<b>Total</b>	<b>64</b>	<b>+ 178.3%</b>	<b>+ 1.6%</b>	<b>2.4</b>	<b>+ 67.0%</b>	<b>+ 15.1%</b>	<b>30</b>	<b>+ 66.7%</b>	<b>- 11.8%</b>

### Showings



### Buyer Interest (Showings/Listings)

