

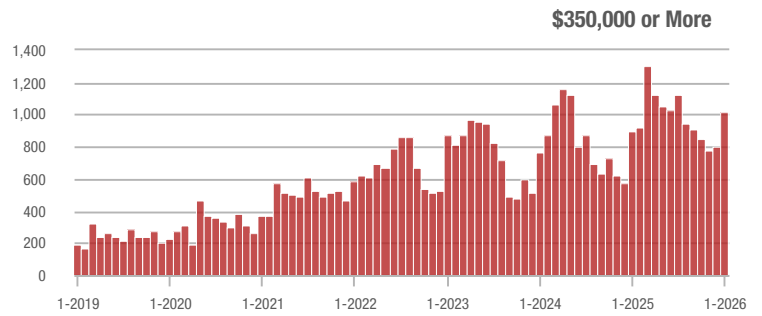
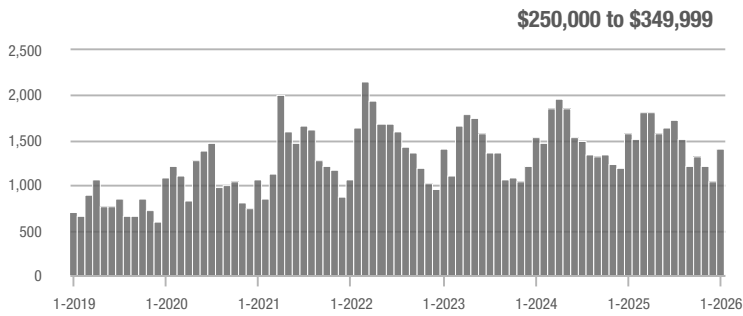
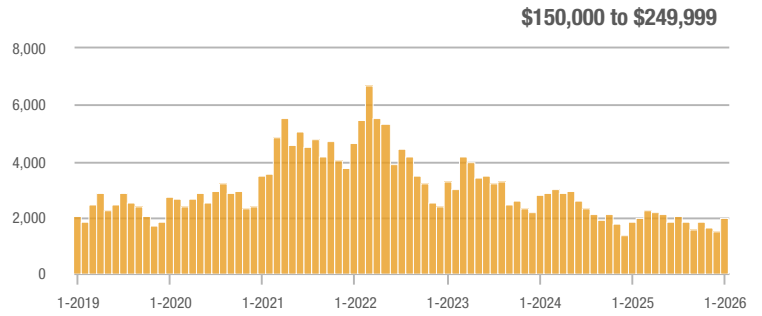
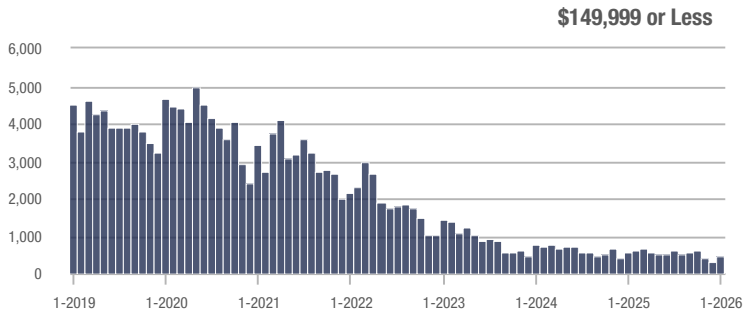
Showings Statistics

MLS Area	Total Showings	Buyer Interest (Showings / Listings)	Managed Listings
Cumberland County	4,833	3.7	1,512
Fayetteville	3,950	3.7	1,229
Harnett County	893	3.2	371
Zip Code 28314	876	3.9	253
Hoke County	810	3.2	297
Raeford	738	3.5	252
Sanford	499	3.4	182
Zip Code 28311	681	4.0	200
Zip Code 28306	764	4.2	207
Hope Mills	631	4.0	183
Lee County	339	3.4	126
Zip Code 28304	558	3.9	163
Zip Code 27332	282	3.0	110
Zip Code 28303	465	3.1	172
Spring Lake	269	2.8	120
Robeson County	308	1.8	215
Cameron	253	4.0	79
Zip Code 27330	217	4.0	72
Zip Code 28312	254	2.6	107
Moore County	183	2.1	116
Lumberton	137	1.6	99
Zip Code 28305	180	3.1	66
Lillington	93	2.5	65
Zip Code 28358	108	1.8	75
Bunnlevel	23	2.3	10
Sampson County	54	2.0	37
Zip Code 28301	220	3.3	76
Parkton	49	1.9	34
Stedman	33	1.9	16
Dunn	48	1.6	32

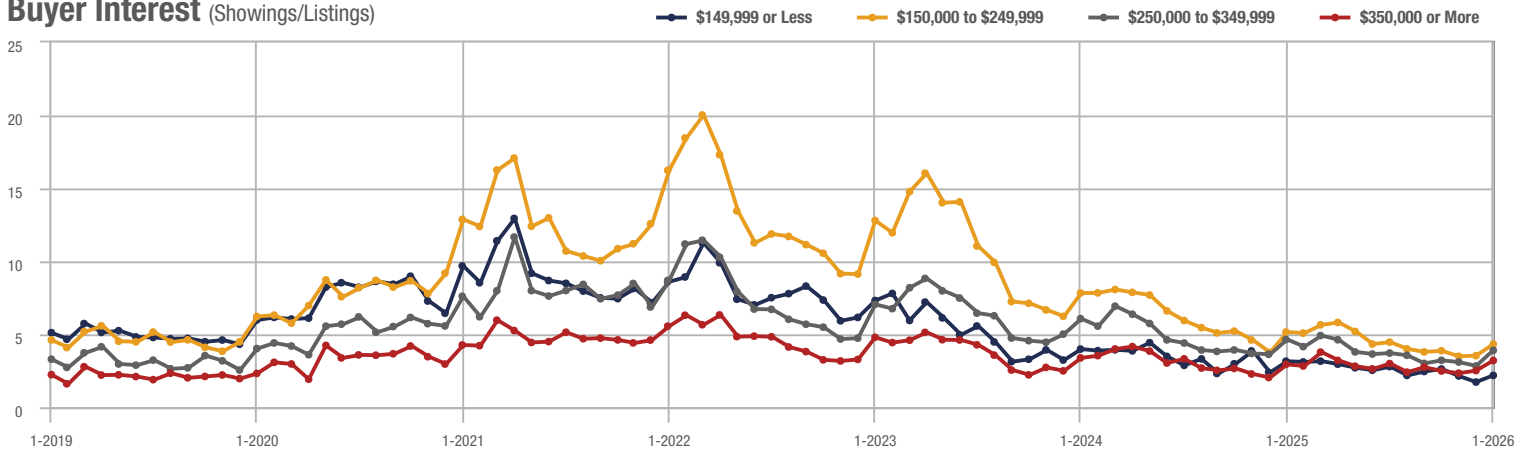
Cumberland County

Price Range	Total Showings			Buyer Interest (Showings/Listings)			Managed Listings		
	January 2026	Year-Over-Year Change	Month-Over-Month Change	January 2026	Year-Over-Year Change	Month-Over-Month Change	January 2026	Year-Over-Year Change	Month-Over-Month Change
\$149,999 or Less	437	+ 5.0%	+ 36.1%	2.2	- 31.3%	+ 26.5%	250	- 10.7%	- 5.3%
\$150,000 to \$249,999	1,969	+ 5.0%	+ 28.9%	4.3	- 17.3%	+ 22.4%	495	+ 25.0%	+ 2.1%
\$250,000 to \$349,999	1,410	- 10.5%	+ 34.5%	3.9	- 15.2%	+ 37.8%	411	- 7.6%	- 2.8%
\$350,000 or More	1,017	+ 13.8%	+ 27.4%	3.2	+ 10.3%	+ 27.5%	356	- 4.8%	+ 0.3%
Total	4,833	- 2.0%	+ 30.8%	3.7	- 3.1%	+ 32.1%	1,512	+ 1.1%	- 1.0%

Showings



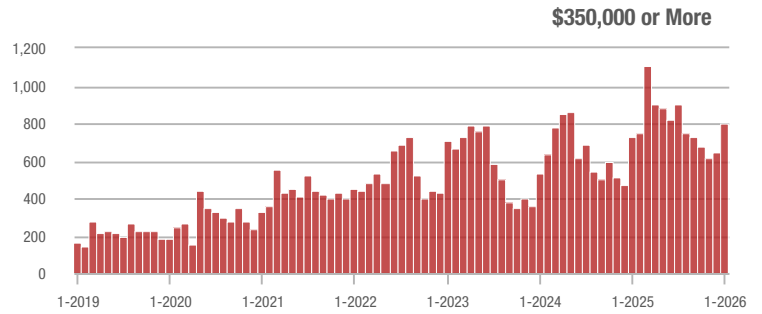
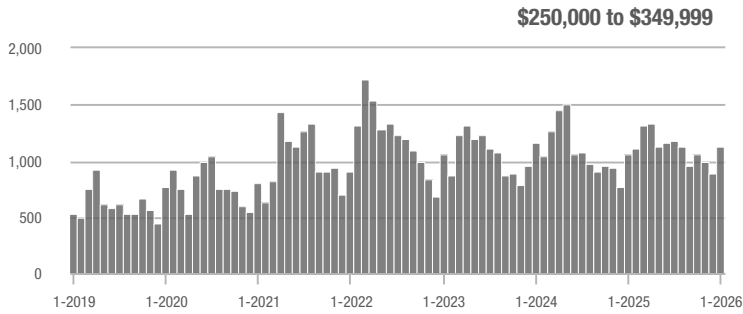
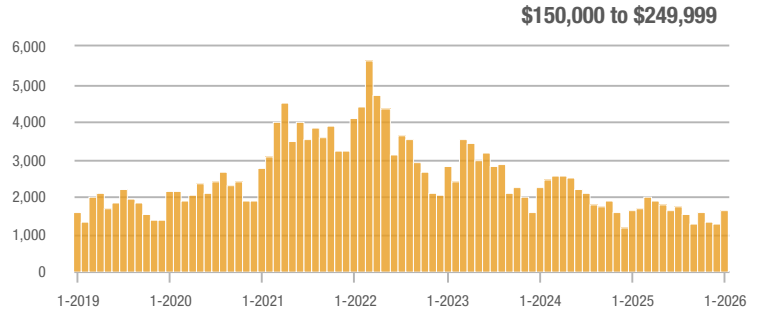
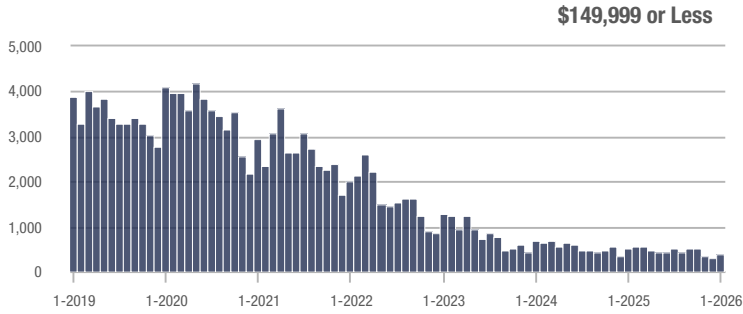
Buyer Interest (Showings/Listings)



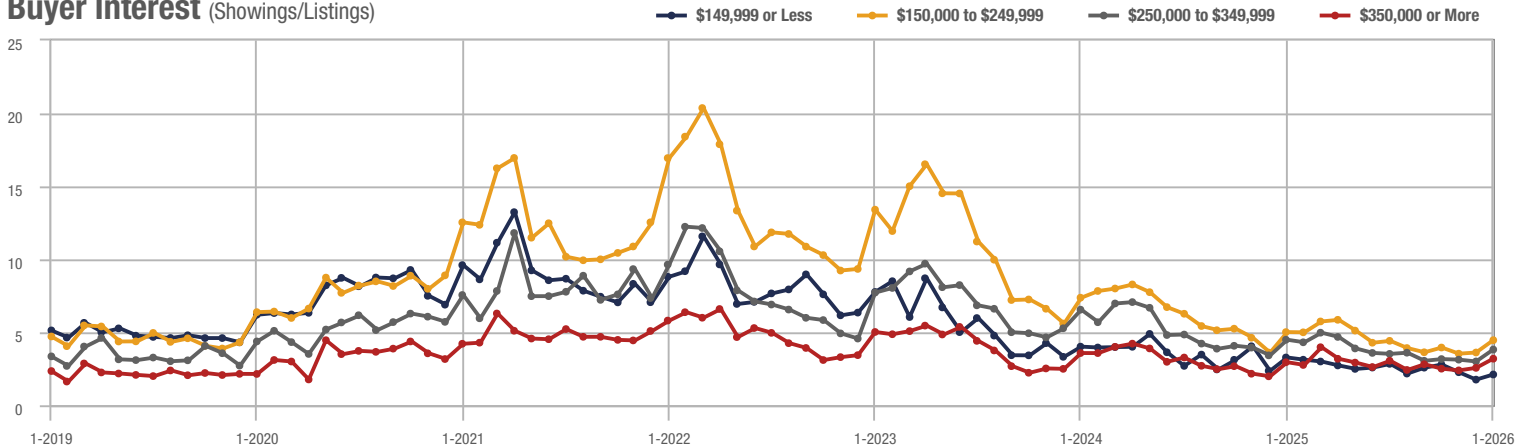
Fayetteville

Price Range	Total Showings			Buyer Interest (Showings/Listings)			Managed Listings		
	January 2026	Year-Over-Year Change	Month-Over-Month Change	January 2026	Year-Over-Year Change	Month-Over-Month Change	January 2026	Year-Over-Year Change	Month-Over-Month Change
\$149,999 or Less	366	+ 0.9%	+ 28.0%	2.1	- 36.4%	+ 20.0%	216	- 9.2%	- 7.3%
\$150,000 to \$249,999	1,655	+ 0.9%	+ 28.2%	4.5	- 10.0%	+ 23.3%	405	+ 14.7%	+ 1.3%
\$250,000 to \$349,999	1,126	+ 5.7%	+ 26.0%	3.8	- 15.6%	+ 27.2%	327	+ 11.2%	- 2.4%
\$350,000 or More	803	+ 9.5%	+ 25.1%	3.2	+ 6.7%	+ 24.6%	281	- 9.9%	+ 2.2%
Total	3,950	+ 0.1%	+ 26.9%	3.7	- 2.6%	+ 28.3%	1,229	+ 2.7%	- 1.1%

Showings



Buyer Interest (Showings/Listings)

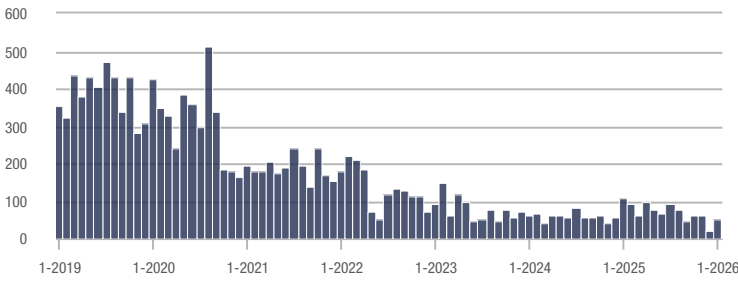


Harnett County

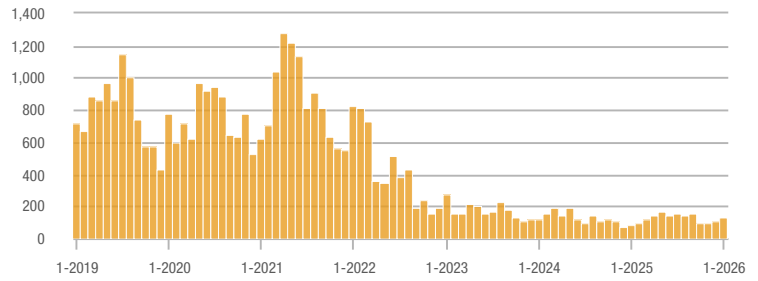
Price Range	Total Showings			Buyer Interest (Showings/Listings)			Managed Listings		
	January 2026	Year-Over-Year Change	Month-Over-Month Change	January 2026	Year-Over-Year Change	Month-Over-Month Change	January 2026	Year-Over-Year Change	Month-Over-Month Change
\$149,999 or Less	50	+ 58.5%	+ 150.0%	2.1	- 22.2%	+ 400.0%	33	- 38.9%	- 17.5%
\$150,000 to \$249,999	130	+ 58.5%	+ 16.1%	3.1	- 3.1%	+ 6.7%	52	+ 67.7%	- 1.9%
\$250,000 to \$349,999	426	+ 11.2%	+ 71.1%	3.8	+ 31.0%	+ 68.7%	149	- 14.9%	- 6.3%
\$350,000 or More	287	+ 14.3%	+ 47.2%	2.8	- 3.4%	+ 30.8%	137	+ 3.0%	- 0.7%
Total	893	+ 8.4%	+ 55.0%	3.2	+ 14.8%	+ 63.0%	371	- 5.6%	- 4.9%

Showings

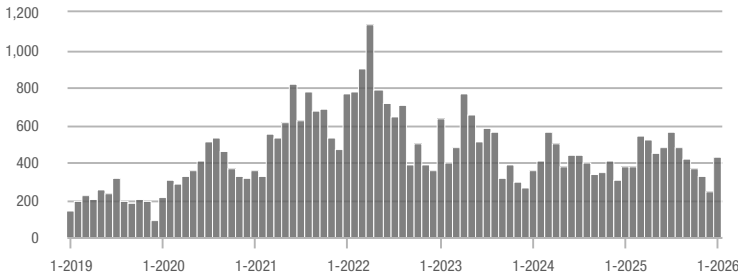
\$149,999 or Less



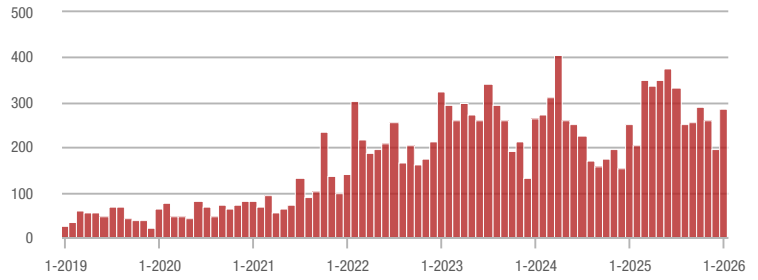
\$150,000 to \$249,999



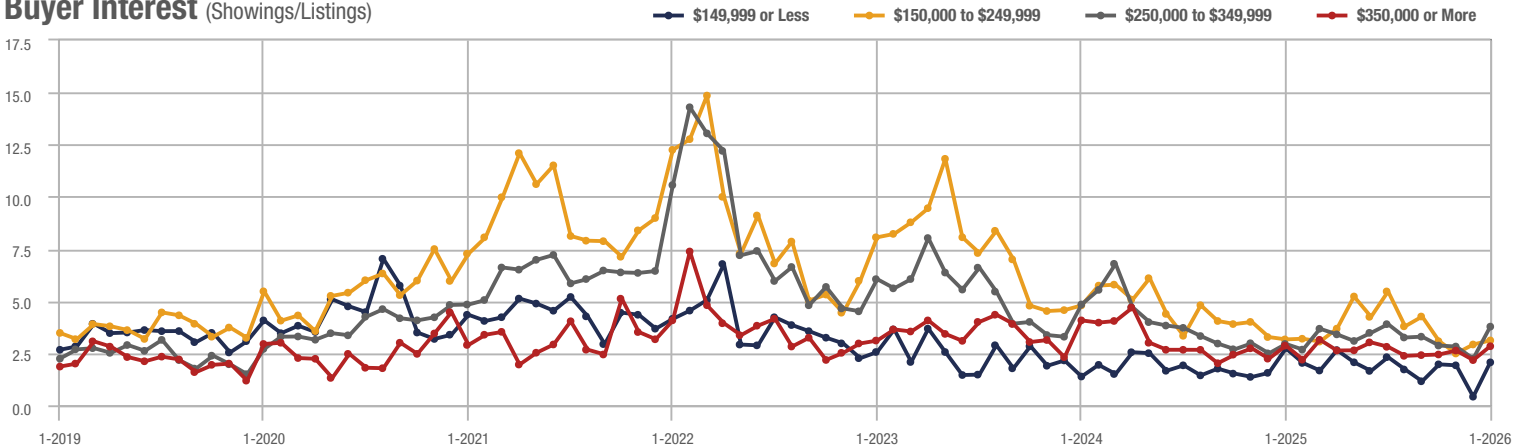
\$250,000 to \$349,999



\$350,000 or More



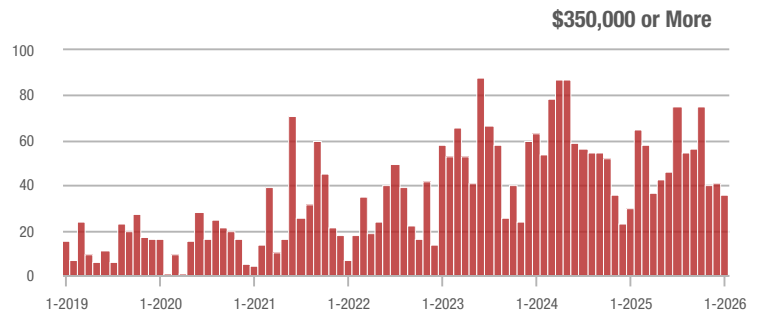
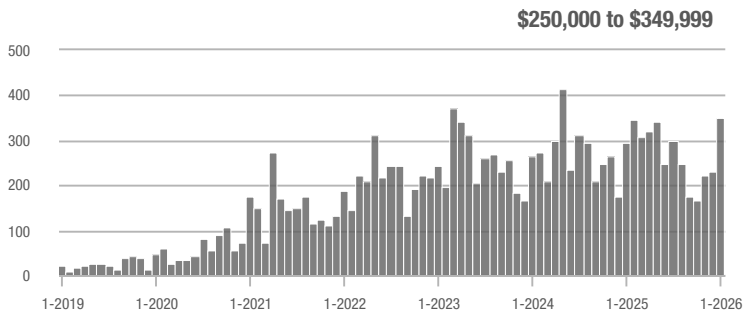
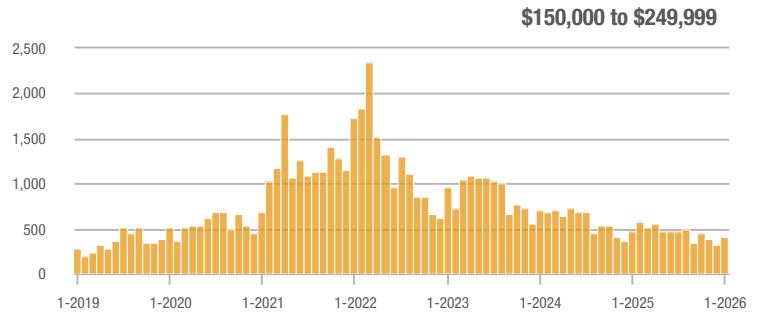
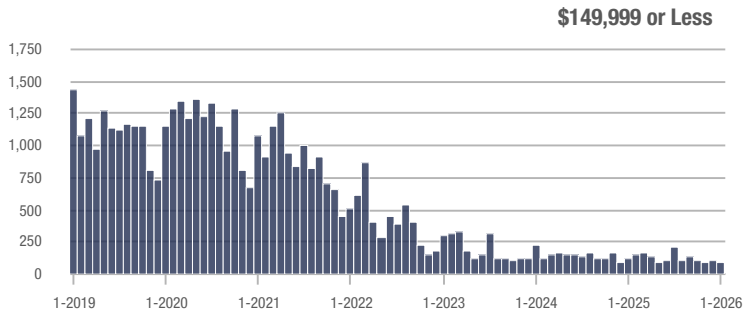
Buyer Interest (Showings/Listings)



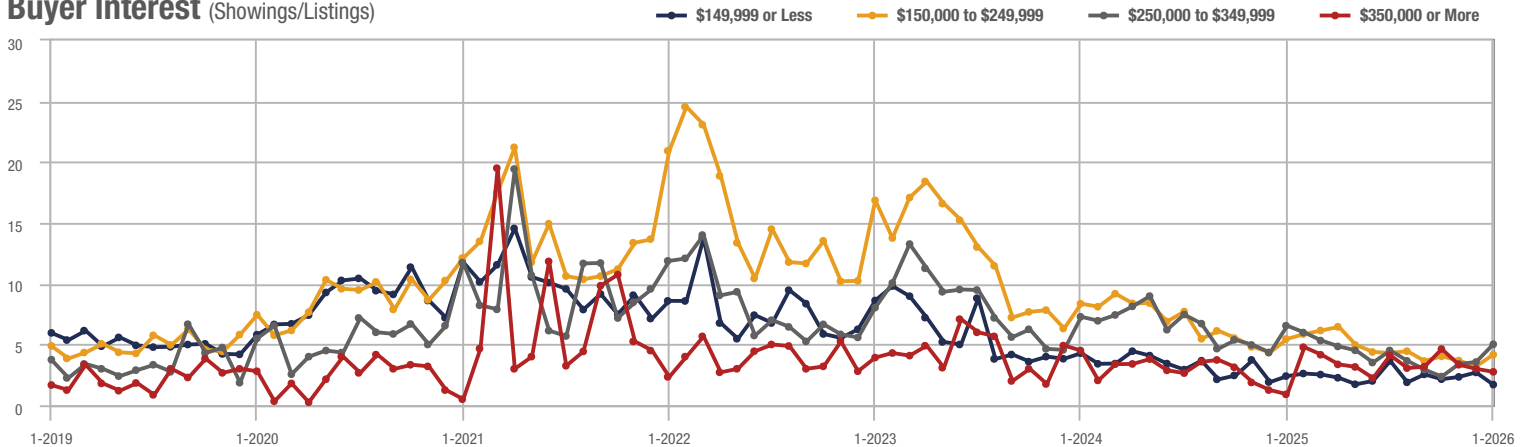
Zip Code 28314

Price Range	Total Showings			Buyer Interest (Showings/Listings)			Managed Listings		
	January 2026	Year-Over-Year Change	Month-Over-Month Change	January 2026	Year-Over-Year Change	Month-Over-Month Change	January 2026	Year-Over-Year Change	Month-Over-Month Change
\$149,999 or Less	83	- 12.8%	- 22.4%	1.7	- 29.2%	- 37.1%	52	- 22.4%	+ 2.0%
\$150,000 to \$249,999	408	- 12.8%	+ 31.6%	4.2	- 23.6%	+ 30.0%	107	+ 20.2%	0.0%
\$250,000 to \$349,999	349	+ 18.3%	+ 52.4%	5.0	- 23.1%	+ 40.9%	79	+ 54.9%	+ 6.8%
\$350,000 or More	36	+ 20.0%	- 12.2%	2.8	+ 211.1%	- 8.3%	15	- 16.7%	+ 7.1%
Total	876	- 4.4%	+ 27.5%	3.9	- 15.0%	+ 24.0%	253	+ 12.4%	+ 2.8%

Showings



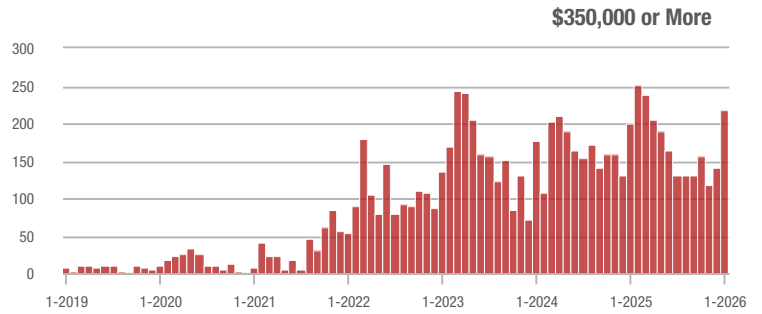
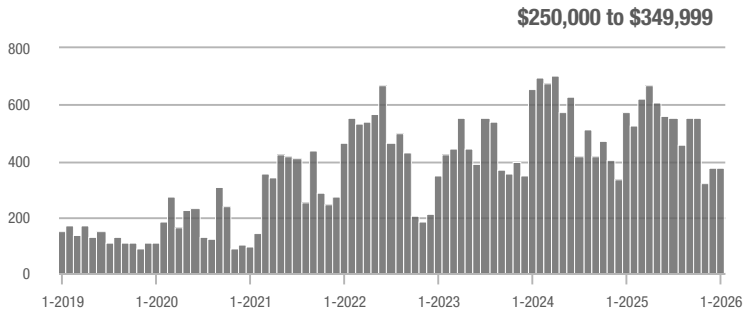
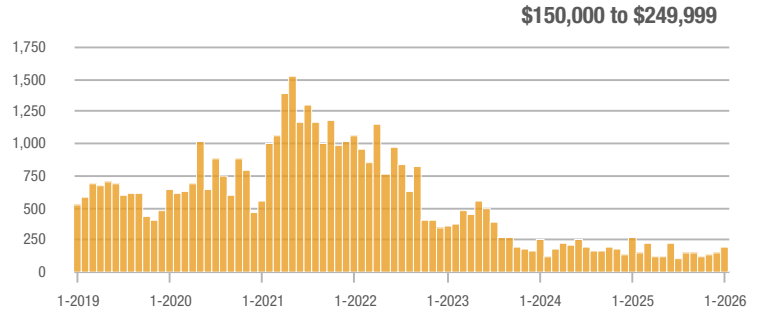
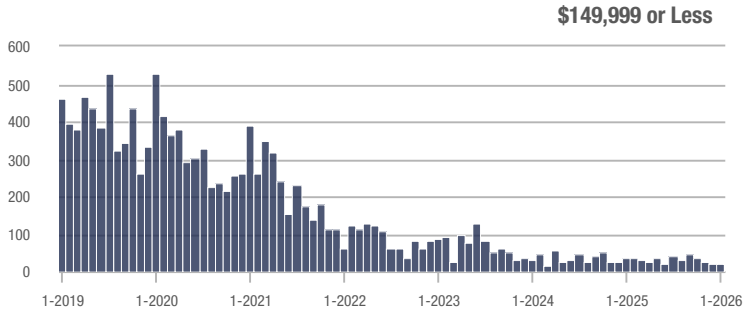
Buyer Interest (Showings/Listings)



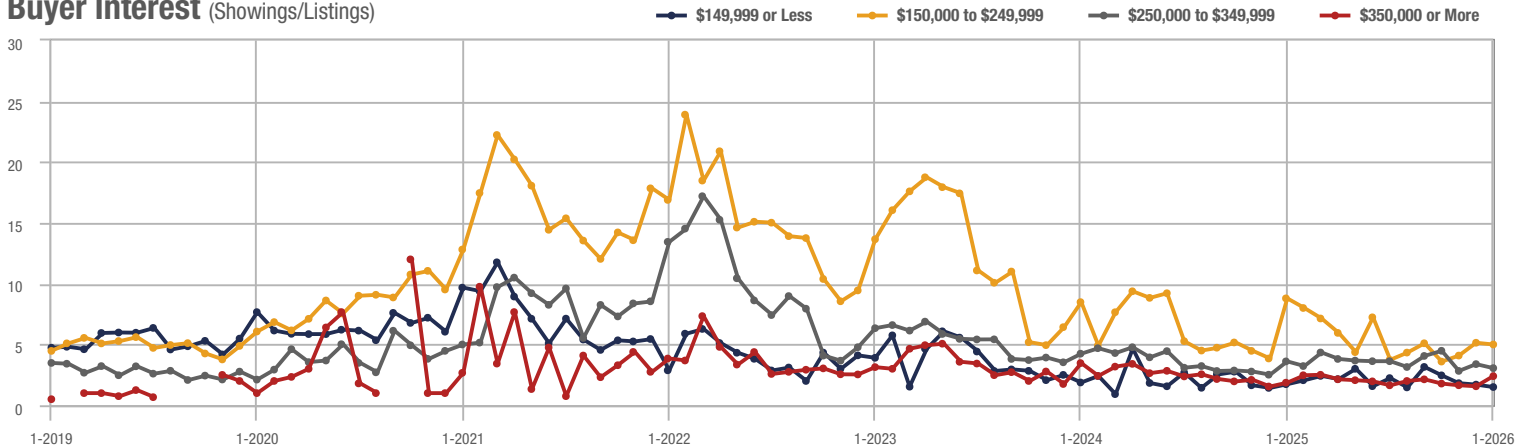
Hoke County

Price Range	Total Showings			Buyer Interest (Showings/Listings)			Managed Listings		
	January 2026	Year-Over-Year Change	Month-Over-Month Change	January 2026	Year-Over-Year Change	Month-Over-Month Change	January 2026	Year-Over-Year Change	Month-Over-Month Change
\$149,999 or Less	18	- 26.4%	- 10.0%	1.5	- 11.8%	- 11.8%	22	- 37.1%	- 21.4%
\$150,000 to \$249,999	198	- 26.4%	+ 35.6%	5.0	- 43.2%	- 2.8%	42	+ 13.5%	+ 27.3%
\$250,000 to \$349,999	375	- 34.9%	- 0.8%	3.1	- 13.9%	- 9.7%	142	- 32.4%	- 7.8%
\$350,000 or More	219	+ 9.0%	+ 56.4%	2.4	+ 26.3%	+ 53.3%	91	- 34.1%	- 10.8%
Total	810	- 25.1%	+ 18.4%	3.2	+ 6.0%	+ 26.4%	297	- 29.3%	- 6.3%

Showings



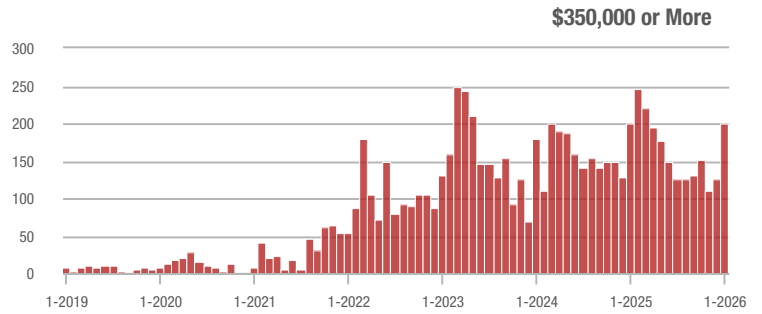
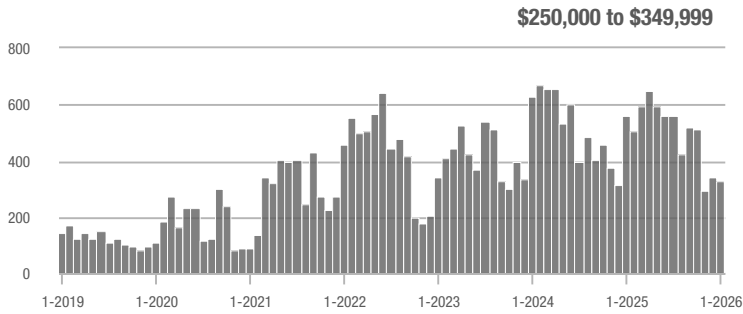
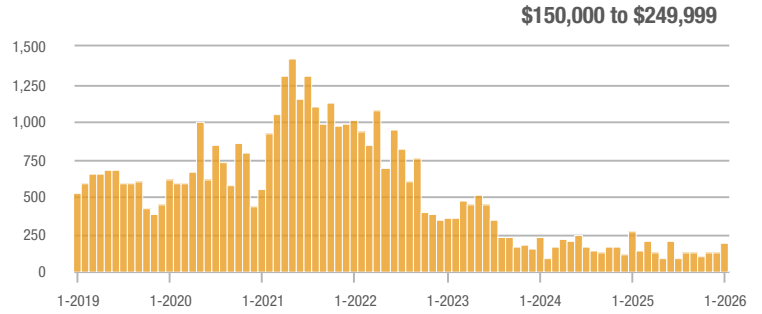
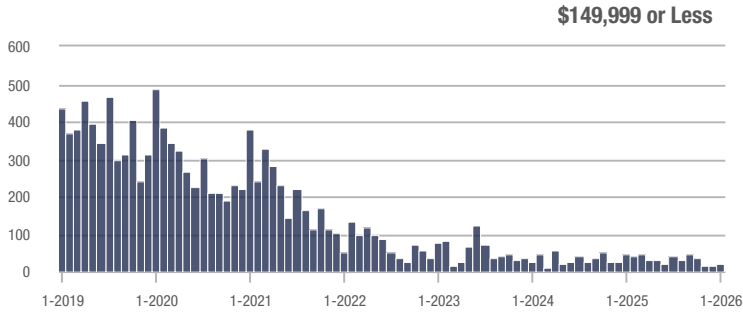
Buyer Interest (Showings/Listings)



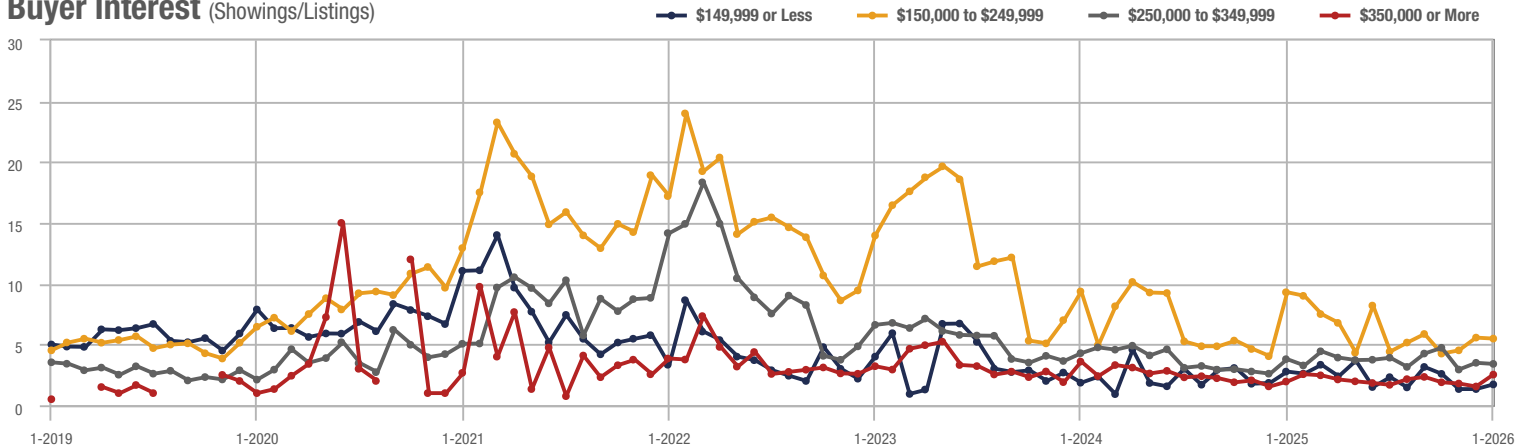
Raeford

Price Range	Total Showings			Buyer Interest (Showings/Listings)			Managed Listings		
	January 2026	Year-Over-Year Change	Month-Over-Month Change	January 2026	Year-Over-Year Change	Month-Over-Month Change	January 2026	Year-Over-Year Change	Month-Over-Month Change
\$149,999 or Less	18	- 26.2%	+ 38.5%	1.7	- 39.3%	+ 28.6%	20	- 35.5%	- 9.1%
\$150,000 to \$249,999	194	- 26.2%	+ 49.2%	5.5	- 40.9%	- 1.4%	38	+ 18.8%	+ 35.7%
\$250,000 to \$349,999	325	- 42.3%	- 5.5%	3.4	- 10.5%	- 2.6%	114	- 41.2%	- 13.0%
\$350,000 or More	201	0.0%	+ 59.5%	2.5	+ 25.0%	+ 63.2%	80	- 38.9%	- 11.1%
Total	738	- 31.2%	+ 20.4%	3.5	+ 6.0%	+ 29.5%	252	- 35.1%	- 7.0%

Showings



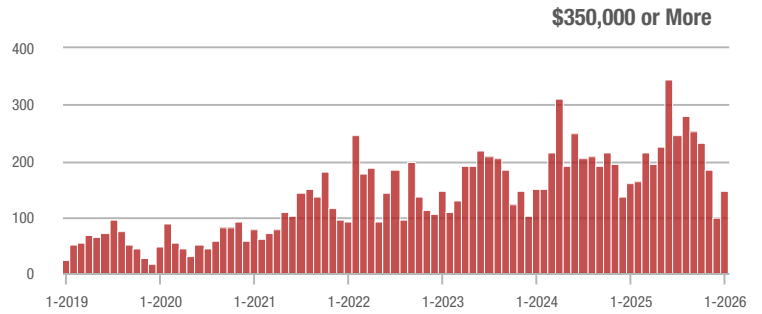
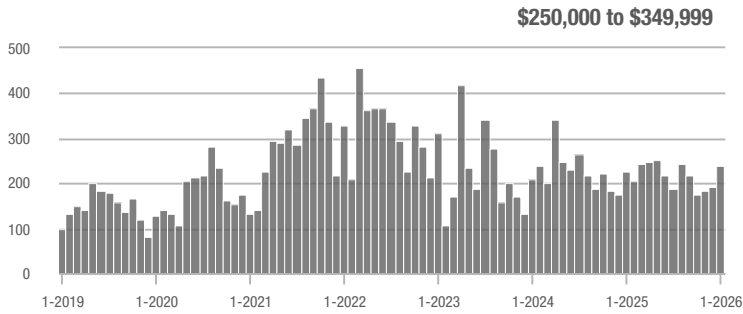
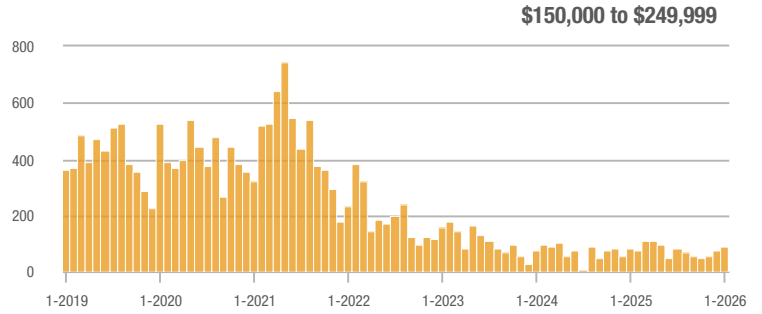
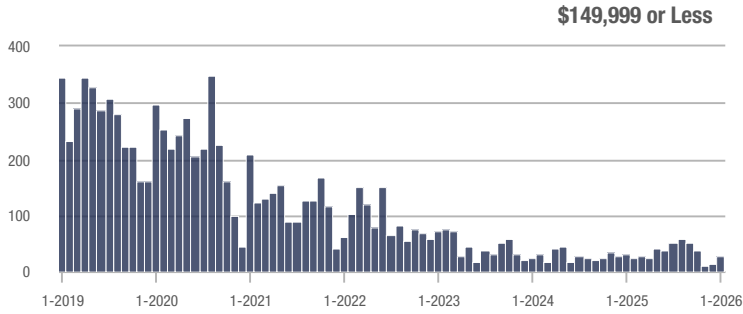
Buyer Interest (Showings/Listings)



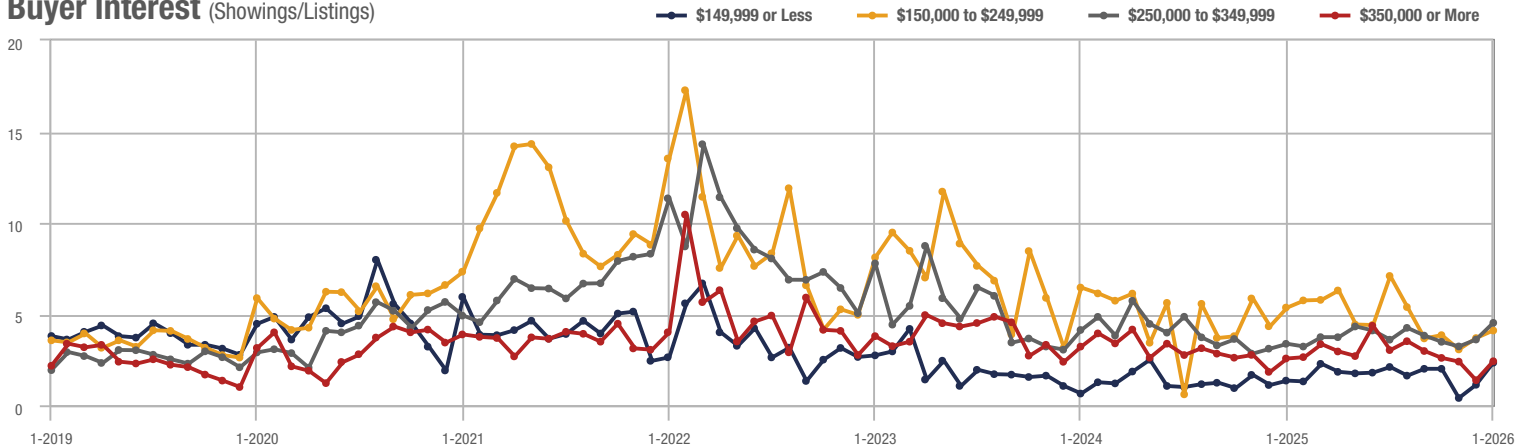
Sanford

Price Range	Total Showings			Buyer Interest (Showings/Listings)			Managed Listings		
	January 2026	Year-Over-Year Change	Month-Over-Month Change	January 2026	Year-Over-Year Change	Month-Over-Month Change	January 2026	Year-Over-Year Change	Month-Over-Month Change
\$149,999 or Less	28	+ 6.2%	+ 133.3%	2.3	+ 64.3%	+ 107.4%	23	- 43.9%	- 14.8%
\$150,000 to \$249,999	86	+ 6.2%	+ 16.2%	4.1	- 24.1%	+ 11.3%	23	+ 21.1%	+ 4.5%
\$250,000 to \$349,999	239	+ 5.8%	+ 23.2%	4.5	+ 32.4%	+ 25.4%	61	- 29.1%	- 1.6%
\$350,000 or More	146	- 9.3%	+ 47.5%	2.4	- 7.7%	+ 75.5%	75	- 8.5%	- 10.7%
Total	499	- 0.2%	+ 31.7%	3.4	+ 25.0%	+ 41.1%	182	- 20.2%	- 6.7%

Showings



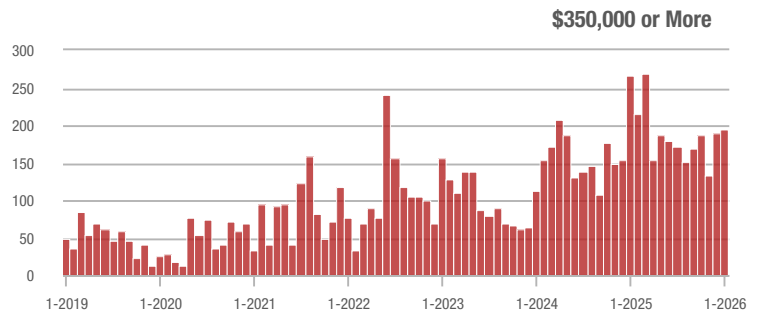
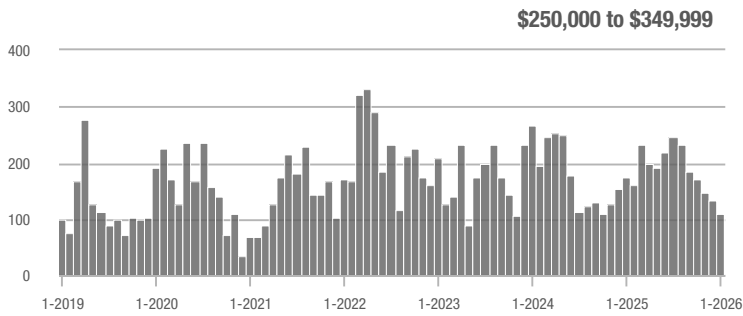
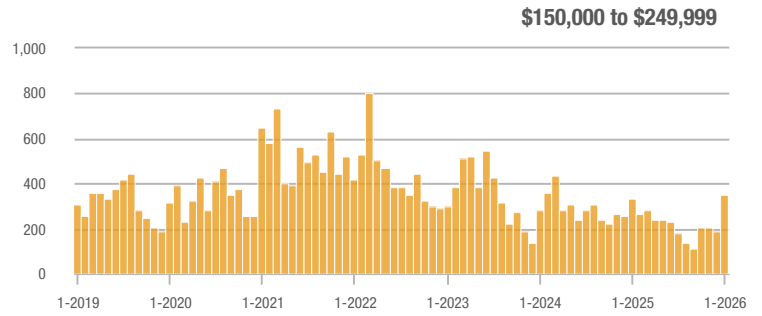
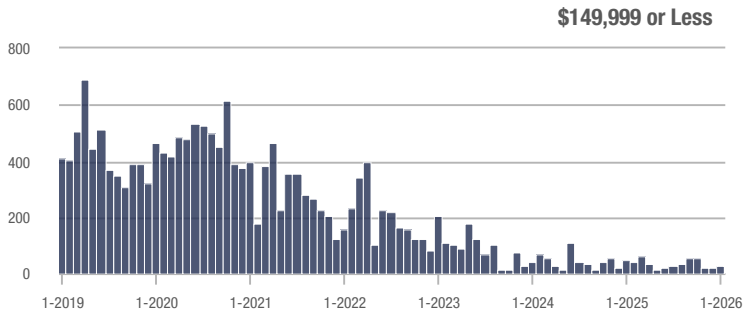
Buyer Interest (Showings/Listings)



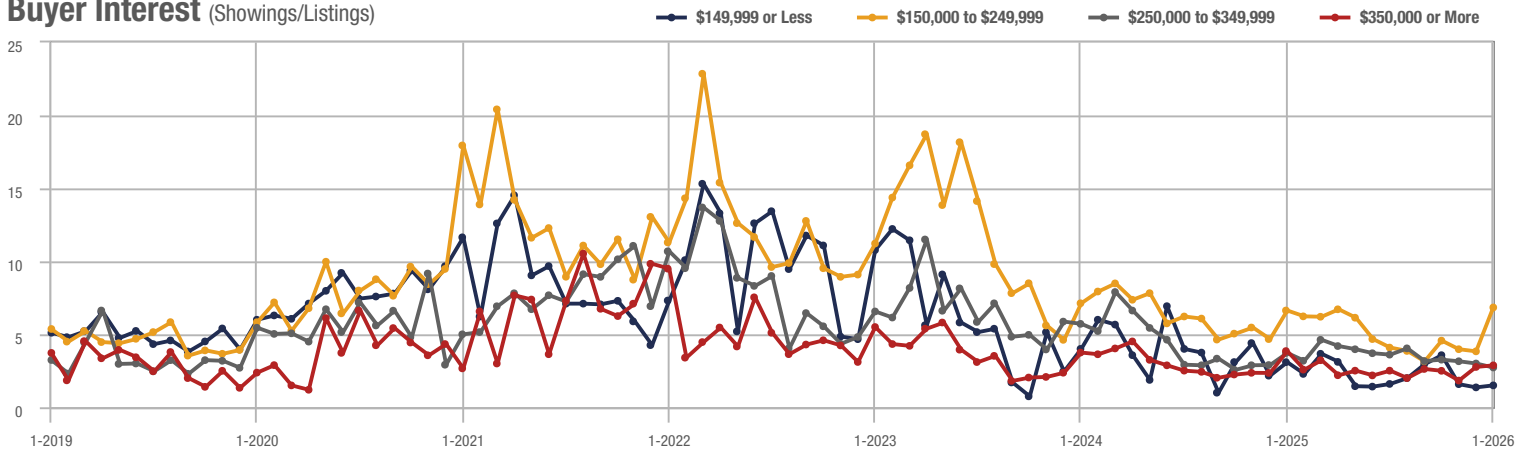
Zip Code 28311

Price Range	Total Showings			Buyer Interest (Showings/Listings)			Managed Listings		
	January 2026	Year-Over-Year Change	Month-Over-Month Change	January 2026	Year-Over-Year Change	Month-Over-Month Change	January 2026	Year-Over-Year Change	Month-Over-Month Change
\$149,999 or Less	26	+ 4.8%	+ 18.2%	1.5	- 51.6%	+ 10.0%	23	+ 15.0%	+ 9.5%
\$150,000 to \$249,999	350	+ 4.8%	+ 84.2%	6.8	+ 3.0%	+ 78.4%	55	0.0%	+ 3.8%
\$250,000 to \$349,999	110	- 37.5%	- 17.9%	2.7	- 27.0%	- 9.1%	49	- 27.9%	- 10.9%
\$350,000 or More	195	- 26.7%	+ 2.1%	2.9	- 25.6%	+ 3.9%	73	- 19.8%	- 1.4%
Total	681	- 17.2%	+ 26.8%	4.0	- 3.1%	+ 28.7%	200	- 14.5%	- 1.5%

Showings



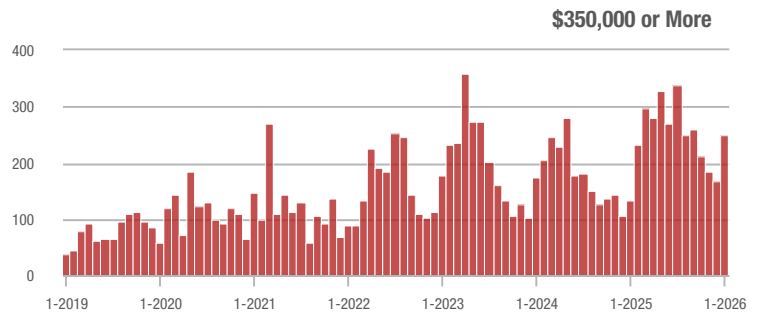
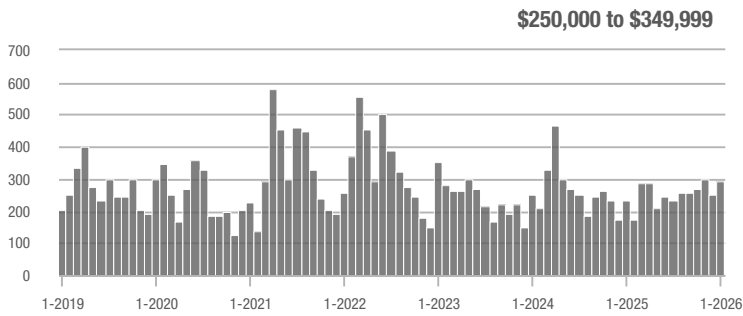
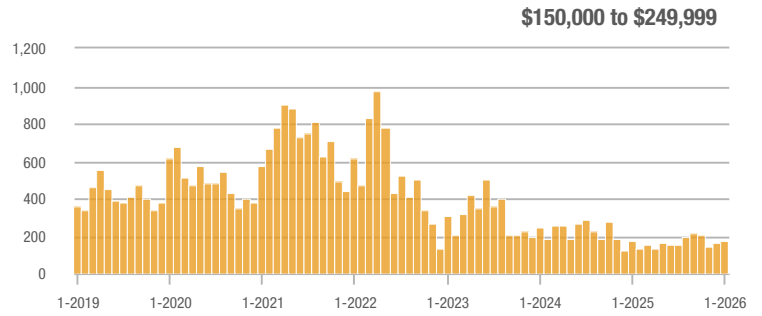
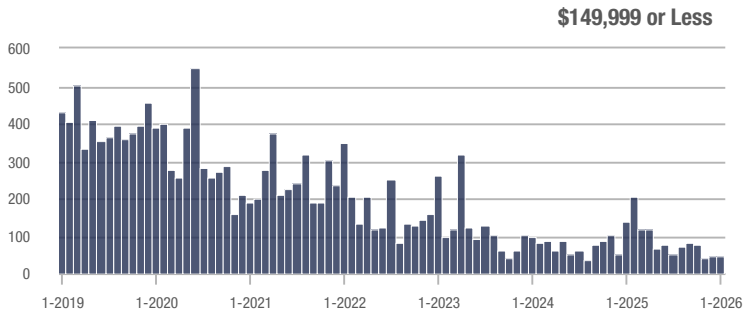
Buyer Interest (Showings/Listings)



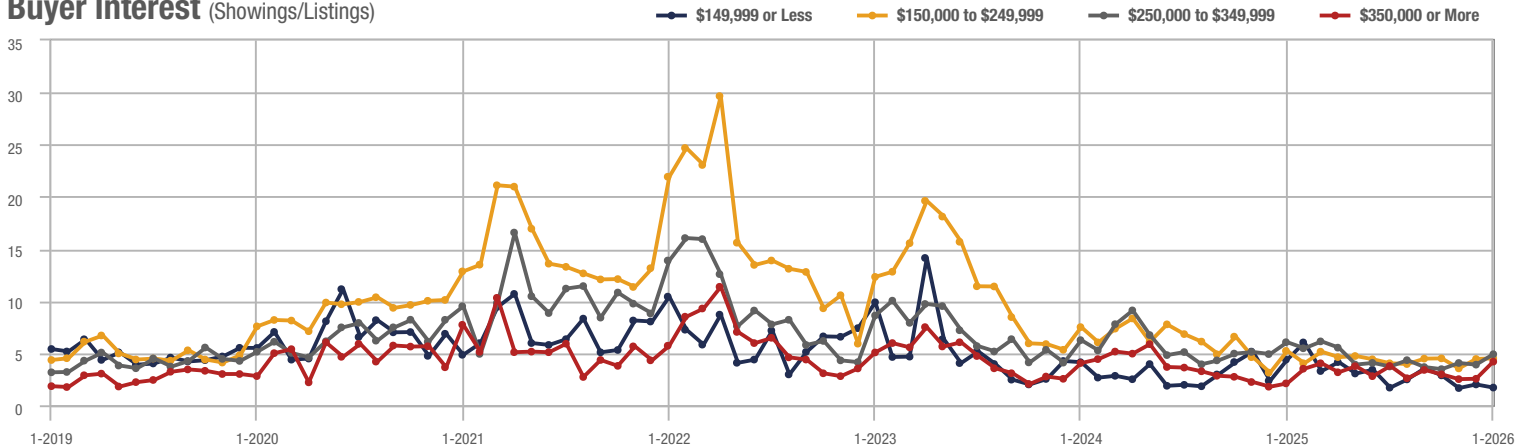
Zip Code 28306

Price Range	Total Showings			Buyer Interest (Showings/Listings)			Managed Listings		
	January 2026	Year-Over-Year Change	Month-Over-Month Change	January 2026	Year-Over-Year Change	Month-Over-Month Change	January 2026	Year-Over-Year Change	Month-Over-Month Change
\$149,999 or Less	45	+ 1.2%	+ 2.3%	1.7	- 61.4%	- 15.0%	34	- 22.7%	- 12.8%
\$150,000 to \$249,999	174	+ 1.2%	+ 8.8%	4.5	- 13.5%	+ 1.3%	41	+ 17.1%	+ 2.5%
\$250,000 to \$349,999	296	+ 27.0%	+ 18.9%	4.9	- 19.7%	+ 25.6%	64	+ 56.1%	- 12.3%
\$350,000 or More	249	+ 87.2%	+ 48.2%	4.2	+ 100.0%	+ 64.7%	68	- 10.5%	- 5.6%
Total	764	+ 12.7%	+ 23.0%	4.2	+ 6.7%	+ 33.1%	207	+ 5.6%	- 7.6%

Showings



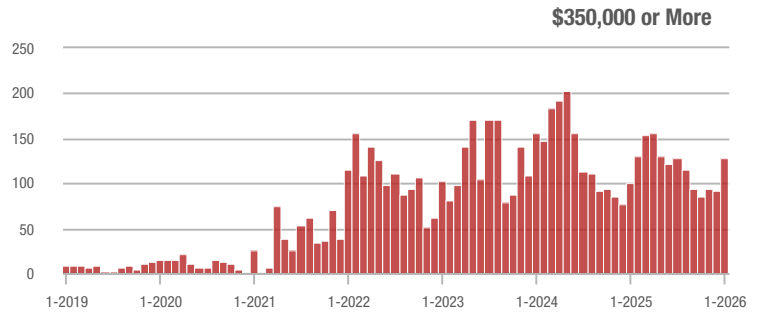
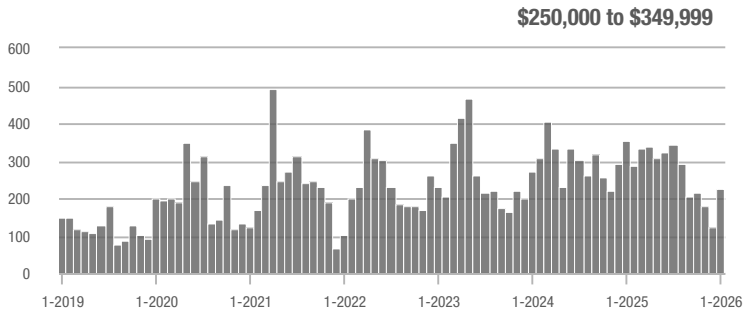
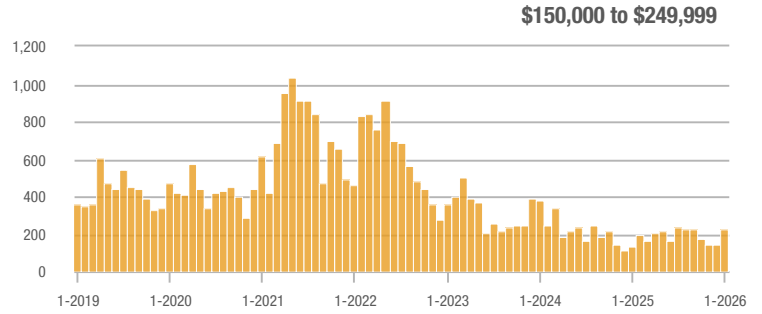
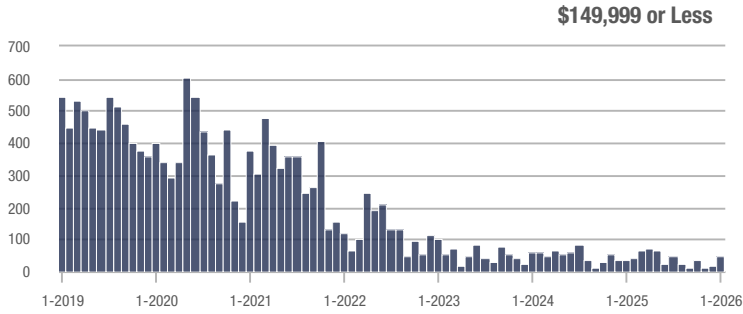
Buyer Interest (Showings/Listings)



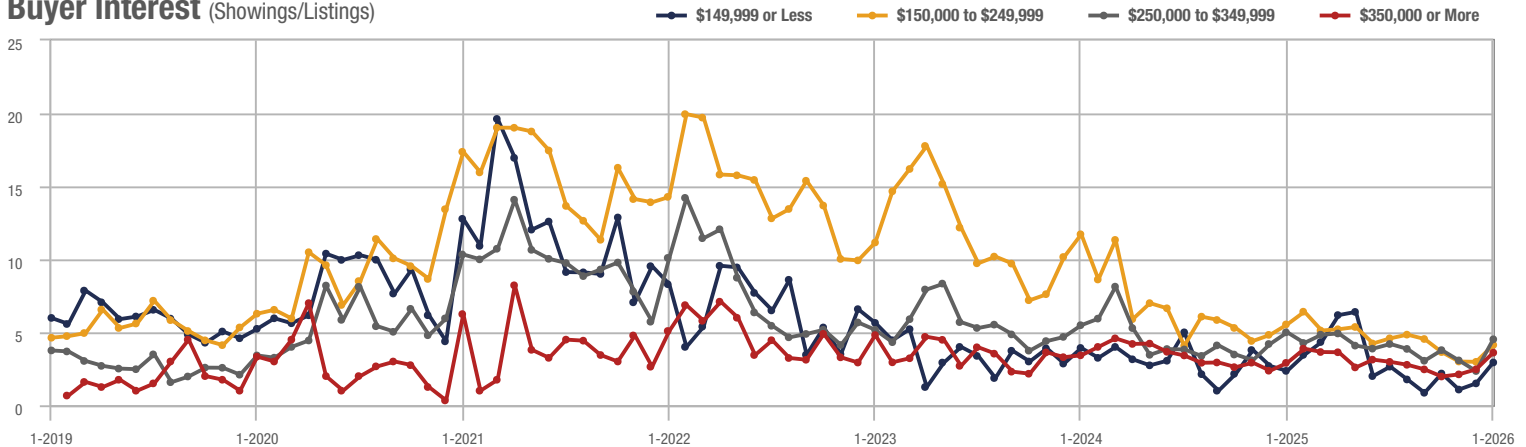
Hope Mills

Price Range	Total Showings			Buyer Interest (Showings/Listings)			Managed Listings		
	January 2026	Year-Over-Year Change	Month-Over-Month Change	January 2026	Year-Over-Year Change	Month-Over-Month Change	January 2026	Year-Over-Year Change	Month-Over-Month Change
\$149,999 or Less	46	+ 72.2%	+ 130.0%	2.9	+ 20.8%	+ 95.6%	17	- 15.0%	+ 13.3%
\$150,000 to \$249,999	229	+ 72.2%	+ 63.6%	4.1	- 25.5%	+ 38.8%	58	+ 132.0%	+ 9.4%
\$250,000 to \$349,999	228	- 36.0%	+ 82.4%	4.5	- 10.0%	+ 92.6%	63	- 28.4%	- 4.5%
\$350,000 or More	128	+ 26.7%	+ 39.1%	3.6	+ 24.1%	+ 46.4%	45	+ 21.6%	- 4.3%
Total	631	+ 1.3%	+ 67.4%	4.0	- 5.9%	+ 65.5%	183	+ 7.6%	+ 1.1%

Showings



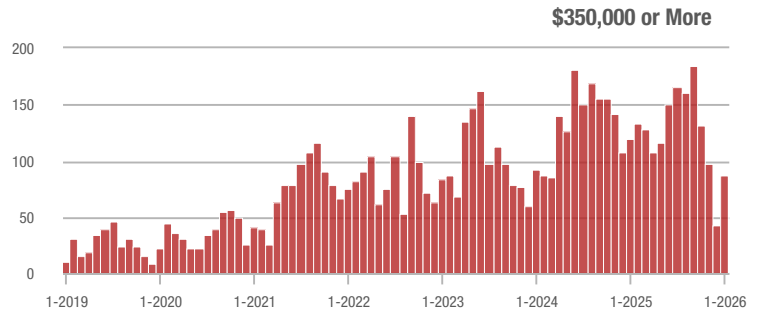
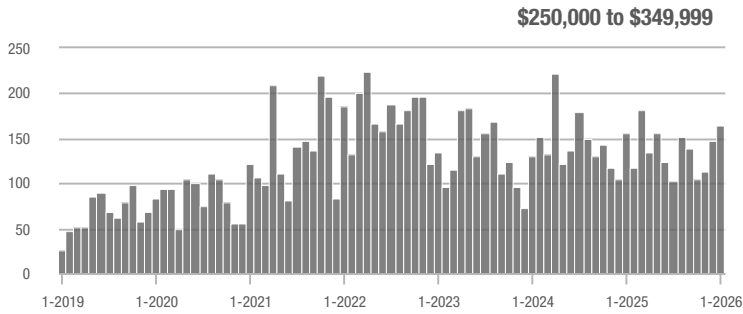
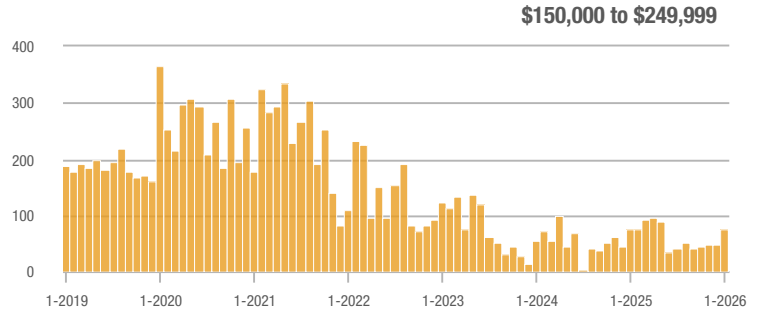
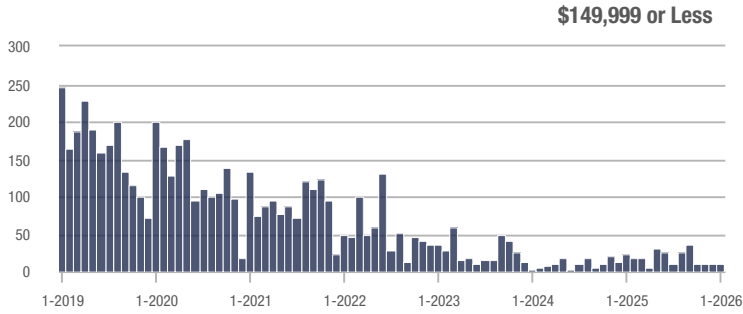
Buyer Interest (Showings/Listings)



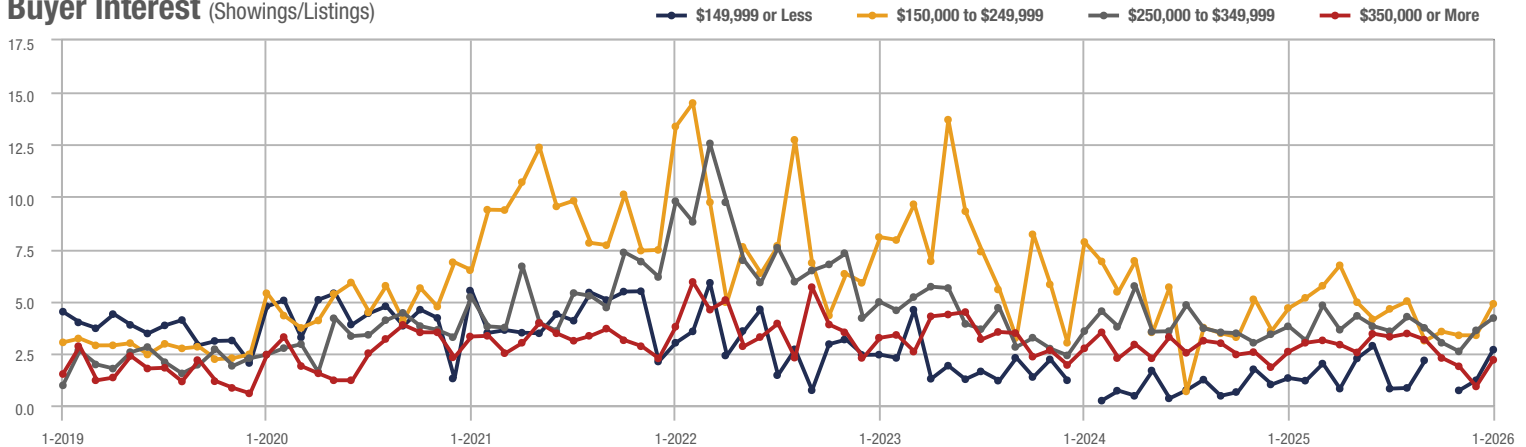
Lee County

Price Range	Total Showings			Buyer Interest (Showings/Listings)			Managed Listings		
	January 2026	Year-Over-Year Change	Month-Over-Month Change	January 2026	Year-Over-Year Change	Month-Over-Month Change	January 2026	Year-Over-Year Change	Month-Over-Month Change
\$149,999 or Less	10	0.0%	+ 11.1%	2.7	+ 107.7%	+ 122.2%	14	- 57.6%	- 30.0%
\$150,000 to \$249,999	76	0.0%	+ 55.1%	4.9	+ 4.3%	+ 45.0%	17	- 15.0%	+ 6.3%
\$250,000 to \$349,999	165	+ 5.1%	+ 12.2%	4.2	+ 10.5%	+ 16.4%	44	- 15.4%	0.0%
\$350,000 or More	88	- 26.7%	+ 104.7%	2.2	- 15.4%	+ 140.9%	51	- 12.1%	- 7.3%
Total	339	- 9.6%	+ 36.7%	3.4	+ 16.9%	+ 46.5%	126	- 22.7%	- 6.7%

Showings



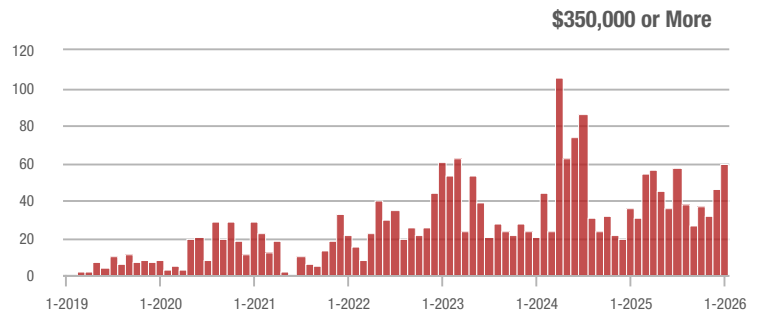
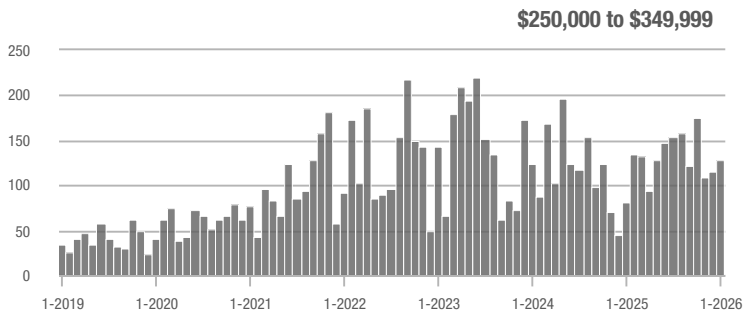
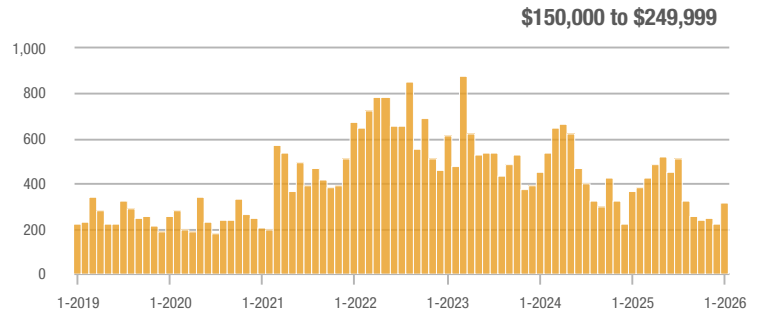
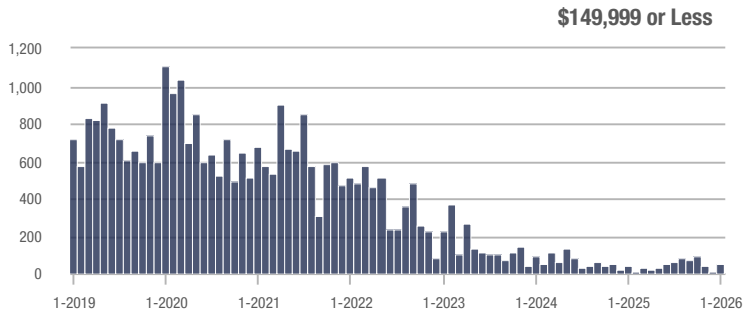
Buyer Interest (Showings/Listings)



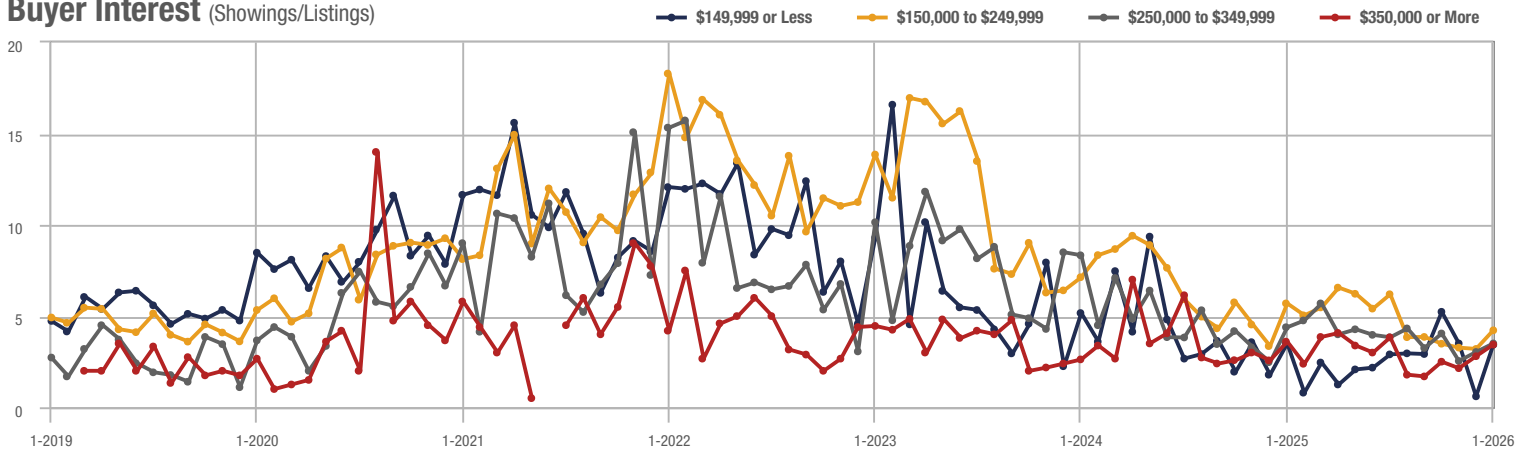
Zip Code 28304

Price Range	Total Showings			Buyer Interest (Showings/Listings)			Managed Listings		
	January 2026	Year-Over-Year Change	Month-Over-Month Change	January 2026	Year-Over-Year Change	Month-Over-Month Change	January 2026	Year-Over-Year Change	Month-Over-Month Change
\$149,999 or Less	53	- 14.1%	+ 341.7%	3.4	- 2.9%	+ 471.4%	24	+ 20.0%	- 14.3%
\$150,000 to \$249,999	317	- 14.1%	+ 40.3%	4.2	- 26.3%	+ 31.8%	81	+ 15.7%	+ 2.5%
\$250,000 to \$349,999	129	+ 57.3%	+ 11.2%	3.5	- 20.5%	+ 15.5%	38	+ 65.2%	- 2.6%
\$350,000 or More	59	+ 63.9%	+ 28.3%	3.4	- 5.6%	+ 22.8%	20	+ 33.3%	0.0%
Total	558	+ 5.1%	+ 39.5%	3.9	- 17.5%	+ 42.1%	163	+ 27.3%	- 1.8%

Showings



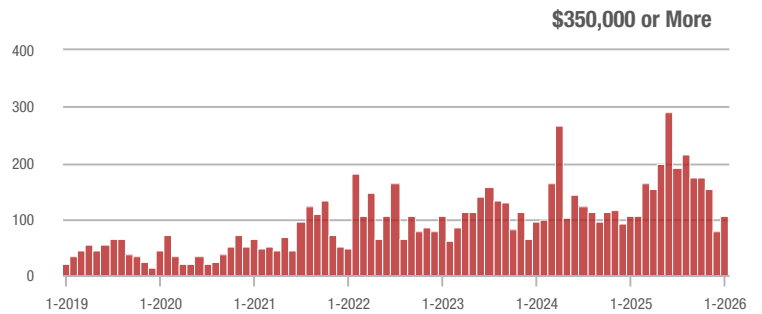
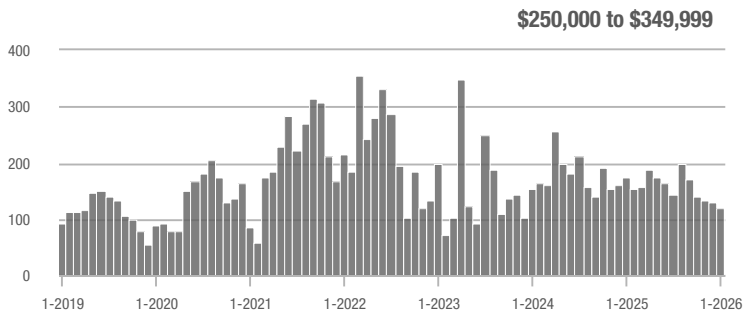
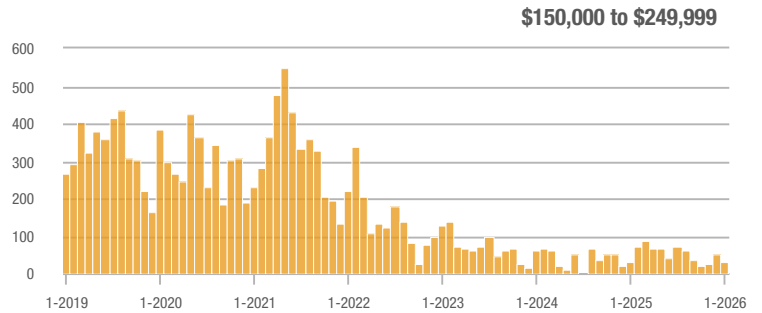
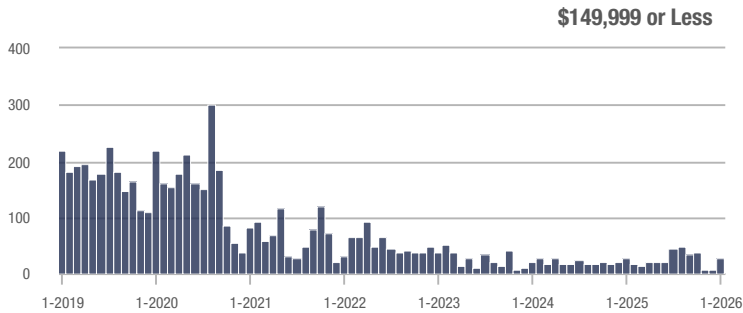
Buyer Interest (Showings/Listings)



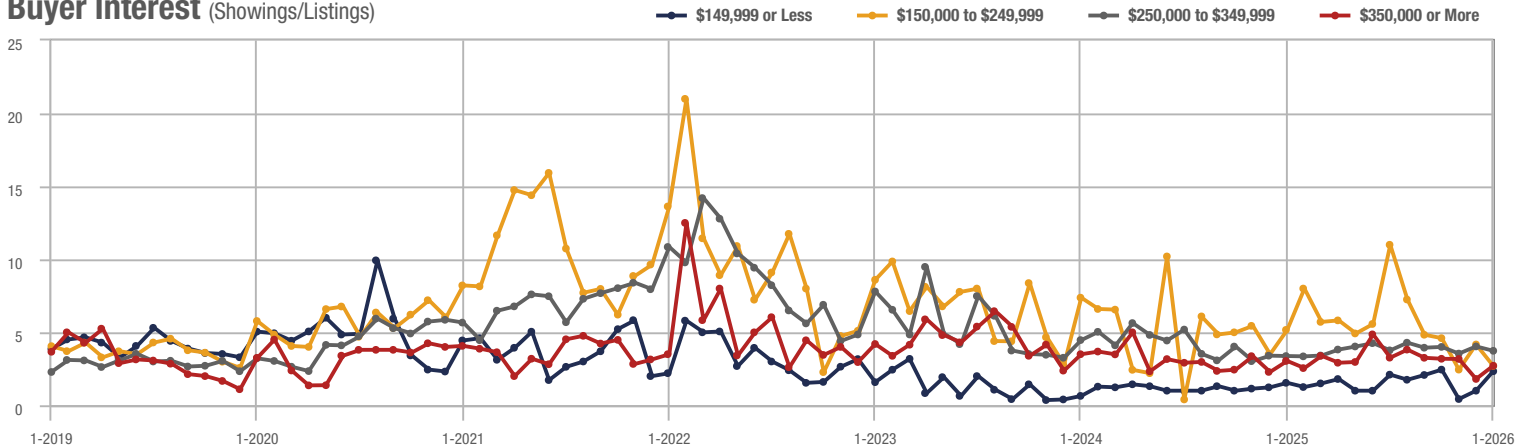
Zip Code 27332

Price Range	Total Showings			Buyer Interest (Showings/Listings)			Managed Listings		
	January 2026	Year-Over-Year Change	Month-Over-Month Change	January 2026	Year-Over-Year Change	Month-Over-Month Change	January 2026	Year-Over-Year Change	Month-Over-Month Change
\$149,999 or Less	27	- 12.1%	+ 237.5%	2.3	+ 53.3%	+ 133.3%	19	- 34.5%	- 5.0%
\$150,000 to \$249,999	29	- 12.1%	- 44.2%	2.7	- 48.1%	- 35.2%	12	+ 33.3%	- 14.3%
\$250,000 to \$349,999	119	- 31.2%	- 9.2%	3.7	+ 8.8%	- 7.5%	36	- 47.1%	- 5.3%
\$350,000 or More	107	+ 0.9%	+ 37.2%	2.7	- 10.0%	+ 50.2%	43	- 15.7%	- 12.2%
Total	282	- 17.1%	+ 4.8%	3.0	+ 18.4%	+ 15.3%	110	- 29.9%	- 9.1%

Showings



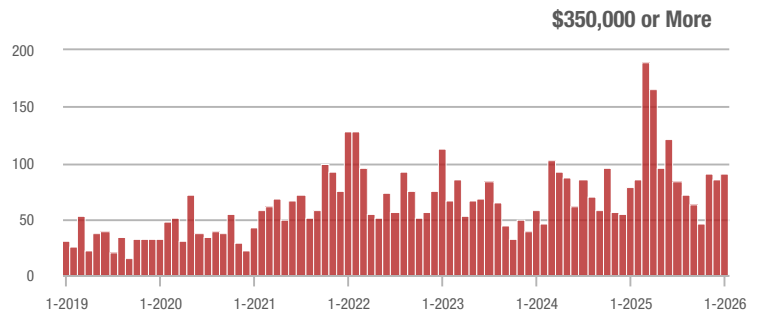
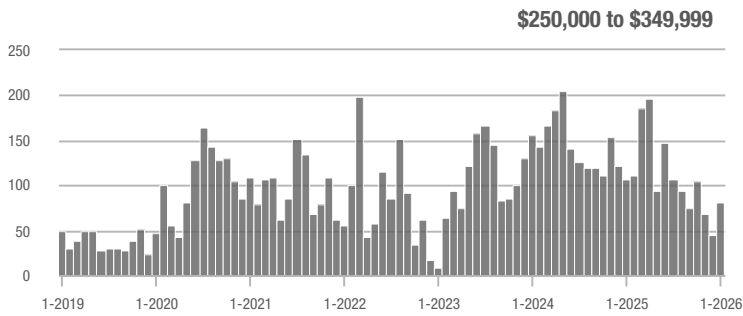
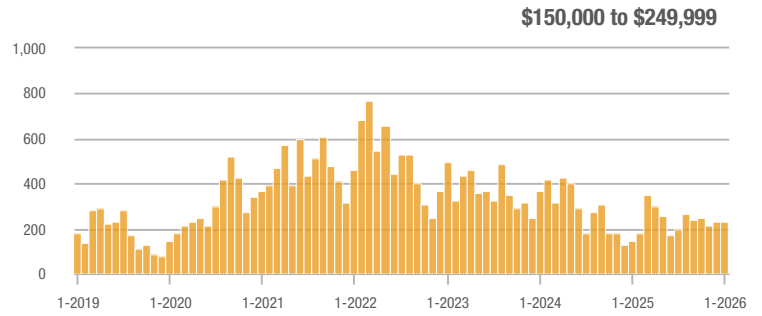
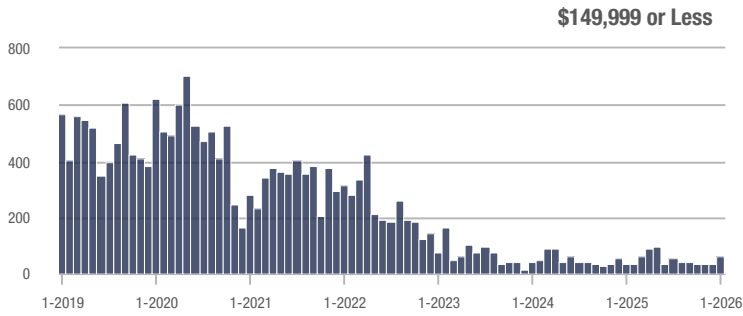
Buyer Interest (Showings/Listings)



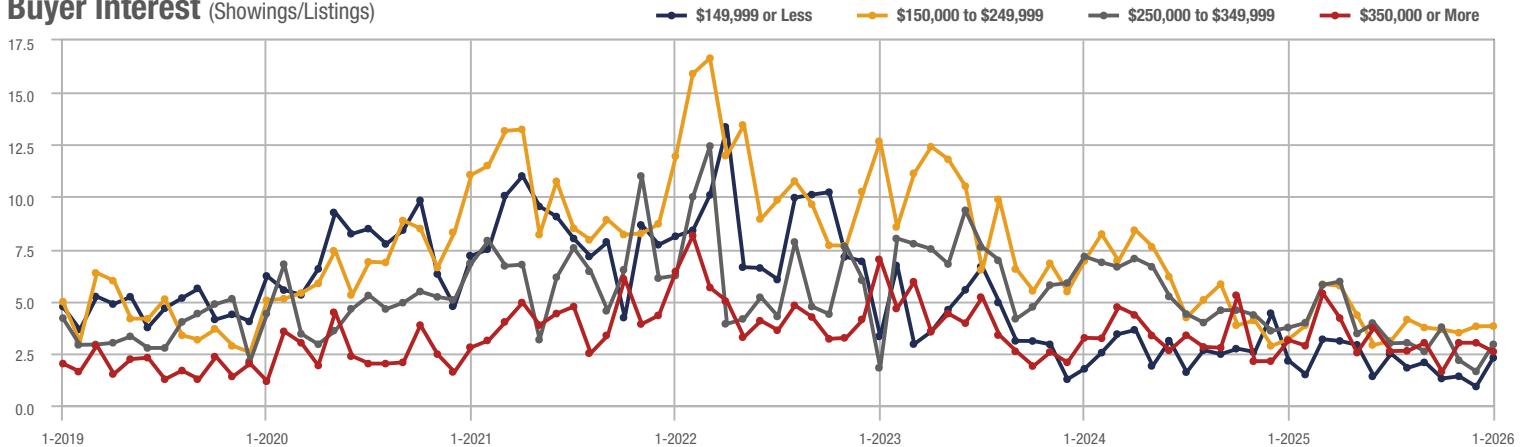
Zip Code 28303

Price Range	Total Showings			Buyer Interest (Showings/Listings)			Managed Listings		
	January 2026	Year-Over-Year Change	Month-Over-Month Change	January 2026	Year-Over-Year Change	Month-Over-Month Change	January 2026	Year-Over-Year Change	Month-Over-Month Change
\$149,999 or Less	64	+ 59.0%	+ 100.0%	2.3	+ 9.5%	+ 153.3%	33	+ 17.9%	- 15.4%
\$150,000 to \$249,999	229	+ 59.0%	+ 0.4%	3.8	+ 18.8%	+ 0.3%	67	+ 28.8%	- 4.3%
\$250,000 to \$349,999	82	- 22.6%	+ 86.4%	2.9	- 21.6%	+ 79.9%	32	+ 6.7%	+ 6.7%
\$350,000 or More	90	+ 13.9%	+ 4.7%	2.6	- 16.1%	- 14.1%	40	+ 33.3%	+ 14.3%
Total	465	+ 27.4%	+ 19.2%	3.1	+ 3.7%	+ 20.6%	172	+ 22.9%	- 1.1%

Showings



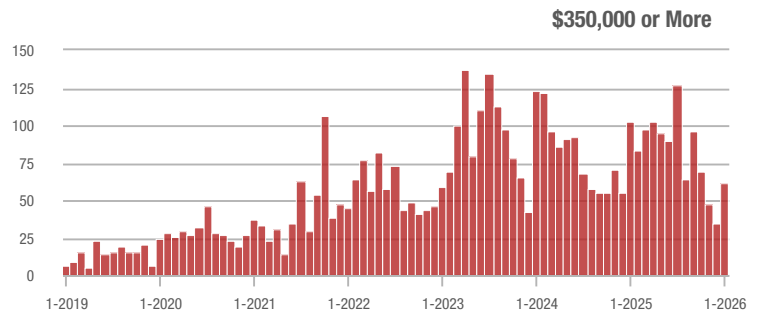
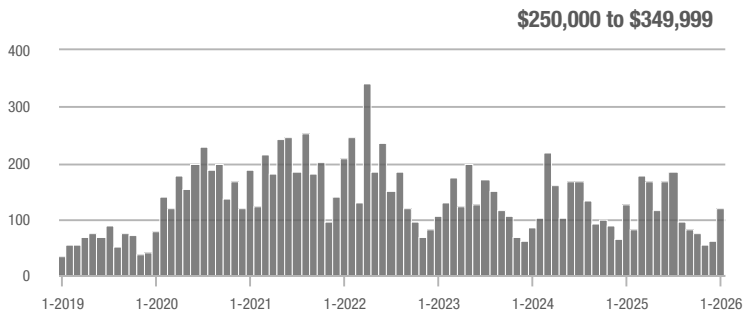
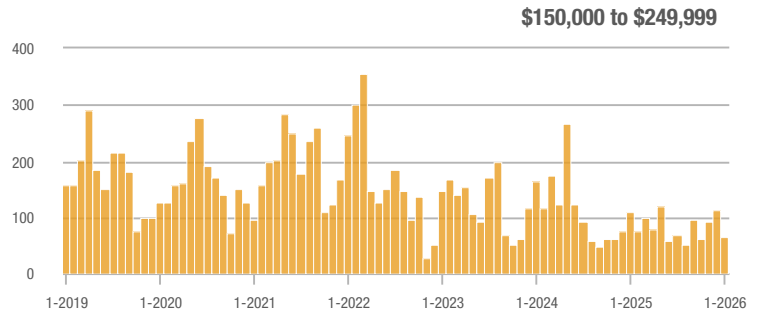
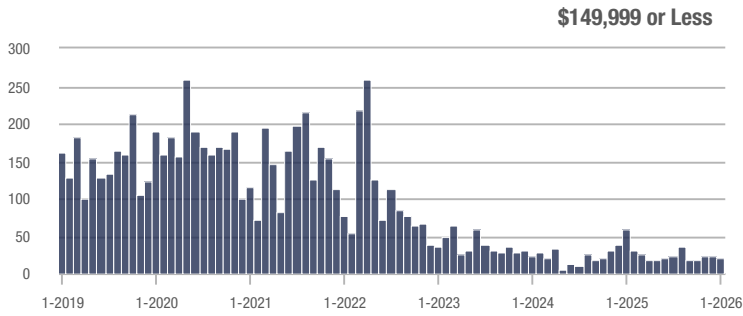
Buyer Interest (Showings/Listings)



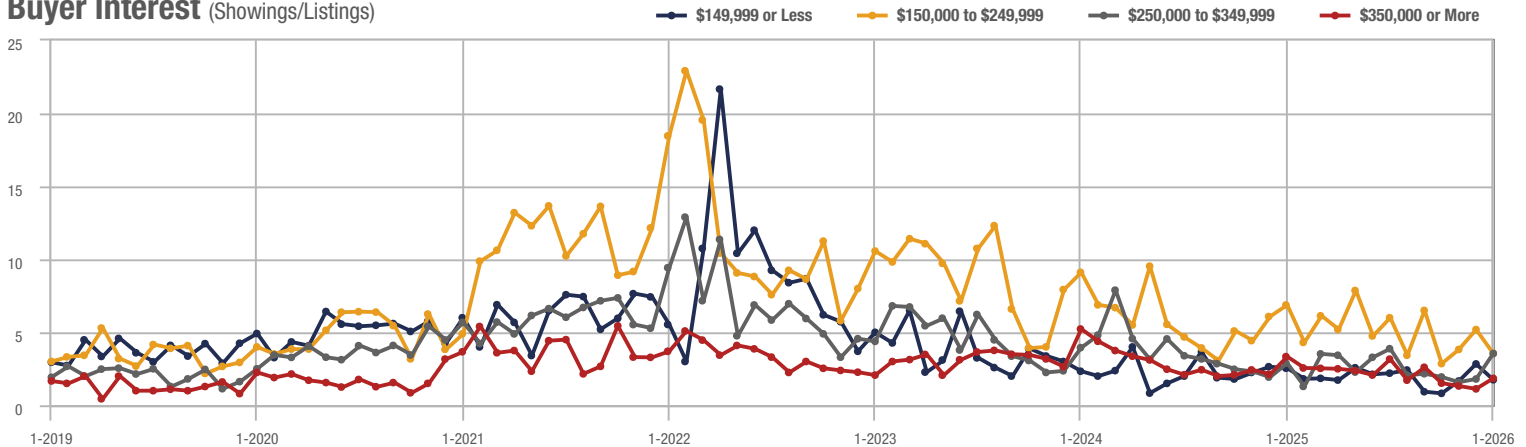
Spring Lake

Price Range	Total Showings			Buyer Interest (Showings/Listings)			Managed Listings		
	January 2026	Year-Over-Year Change	Month-Over-Month Change	January 2026	Year-Over-Year Change	Month-Over-Month Change	January 2026	Year-Over-Year Change	Month-Over-Month Change
\$149,999 or Less	20	- 40.5%	- 9.1%	1.8	- 28.0%	- 38.2%	17	- 10.5%	0.0%
\$150,000 to \$249,999	66	- 40.5%	- 41.6%	3.6	- 47.8%	- 31.5%	22	+ 15.8%	- 15.4%
\$250,000 to \$349,999	121	- 4.0%	+ 101.7%	3.5	+ 20.7%	+ 97.1%	40	- 27.3%	+ 2.6%
\$350,000 or More	62	- 39.2%	+ 82.4%	1.8	- 45.5%	+ 64.1%	41	+ 20.6%	+ 5.1%
Total	269	- 32.4%	+ 17.5%	2.8	- 28.5%	+ 18.4%	120	- 5.5%	- 0.8%

Showings



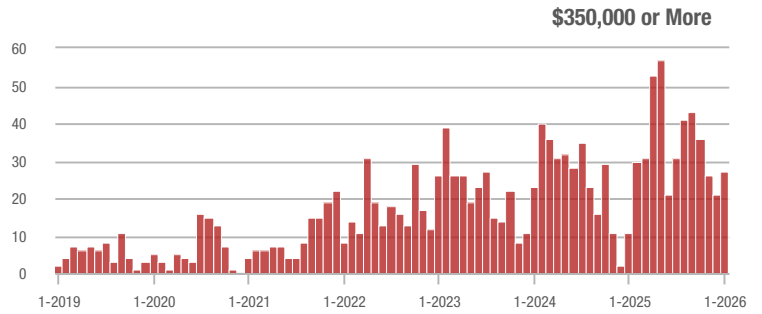
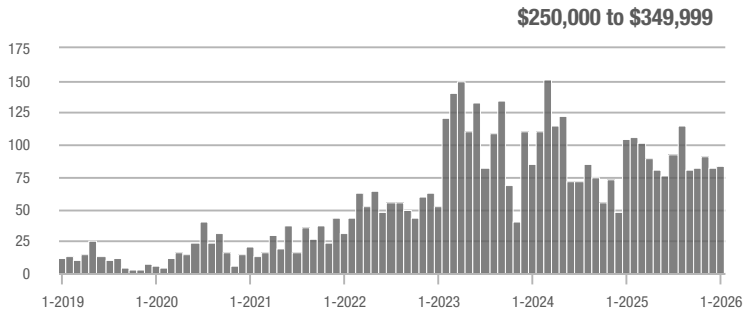
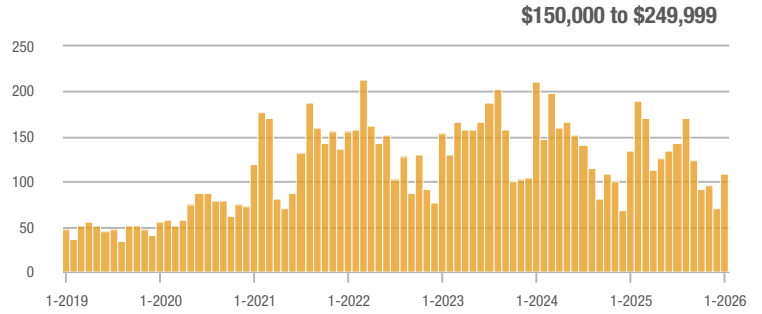
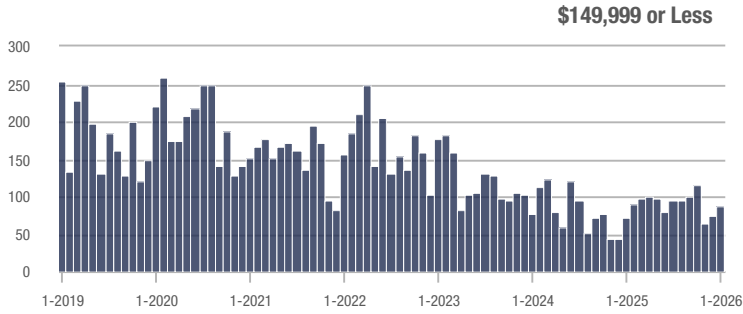
Buyer Interest (Showings/Listings)



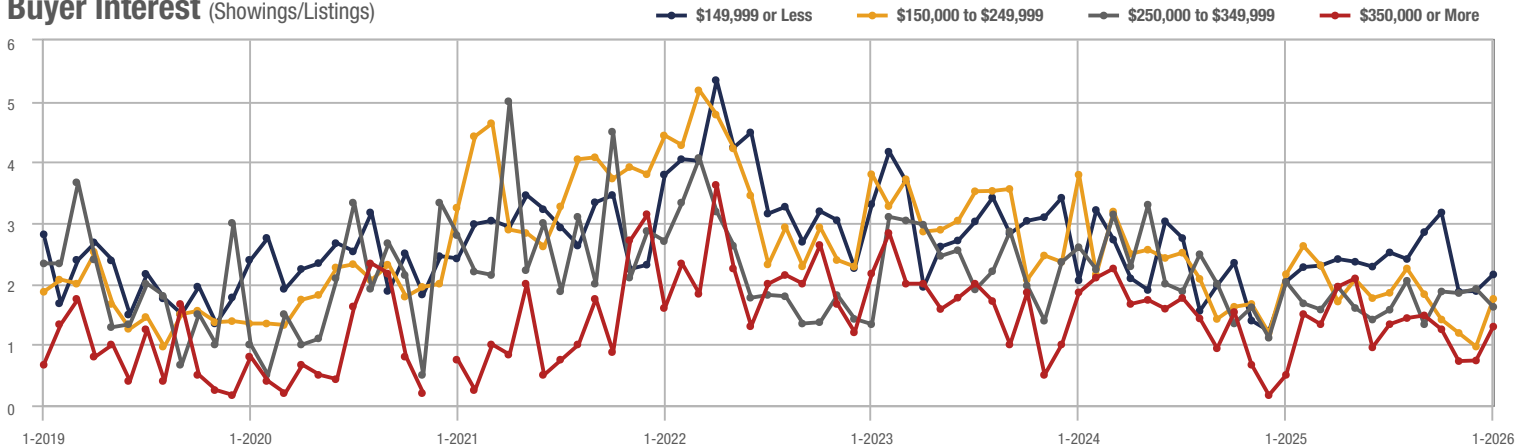
Robeson County

Price Range	Total Showings			Buyer Interest (Showings/Listings)			Managed Listings		
	January 2026	Year-Over-Year Change	Month-Over-Month Change	January 2026	Year-Over-Year Change	Month-Over-Month Change	January 2026	Year-Over-Year Change	Month-Over-Month Change
\$149,999 or Less	87	- 17.9%	+ 16.0%	2.2	+ 10.0%	+ 14.5%	55	+ 12.2%	- 6.8%
\$150,000 to \$249,999	110	- 17.9%	+ 57.1%	1.8	- 18.2%	+ 81.1%	71	0.0%	- 11.3%
\$250,000 to \$349,999	84	- 19.2%	+ 2.4%	1.6	- 20.0%	- 15.4%	64	- 4.5%	+ 3.2%
\$350,000 or More	27	+ 145.5%	+ 28.6%	1.3	+ 160.0%	+ 75.6%	25	0.0%	- 10.7%
Total	308	- 4.3%	+ 24.2%	1.8	- 5.7%	+ 32.3%	215	+ 1.4%	- 6.1%

Showings



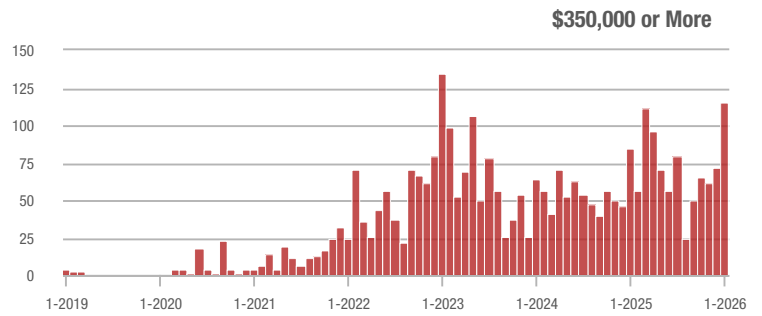
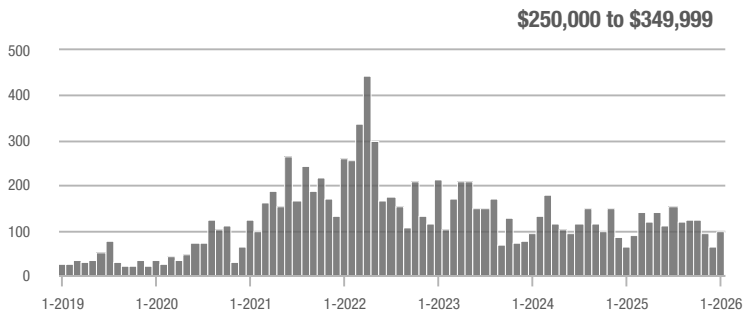
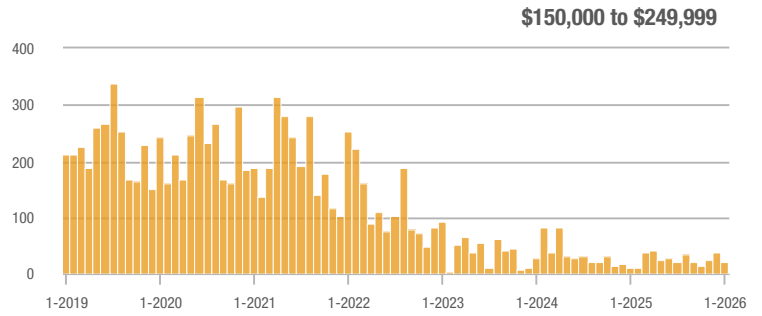
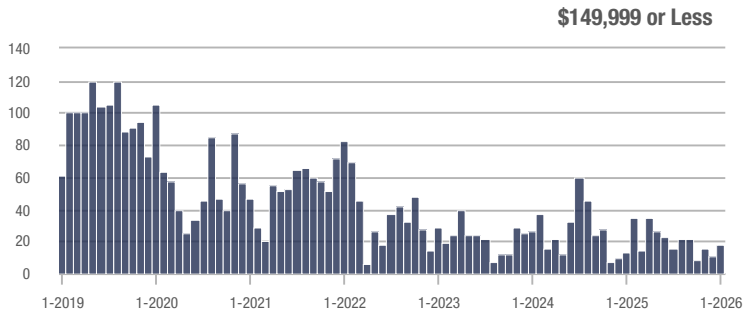
Buyer Interest (Showings/Listings)



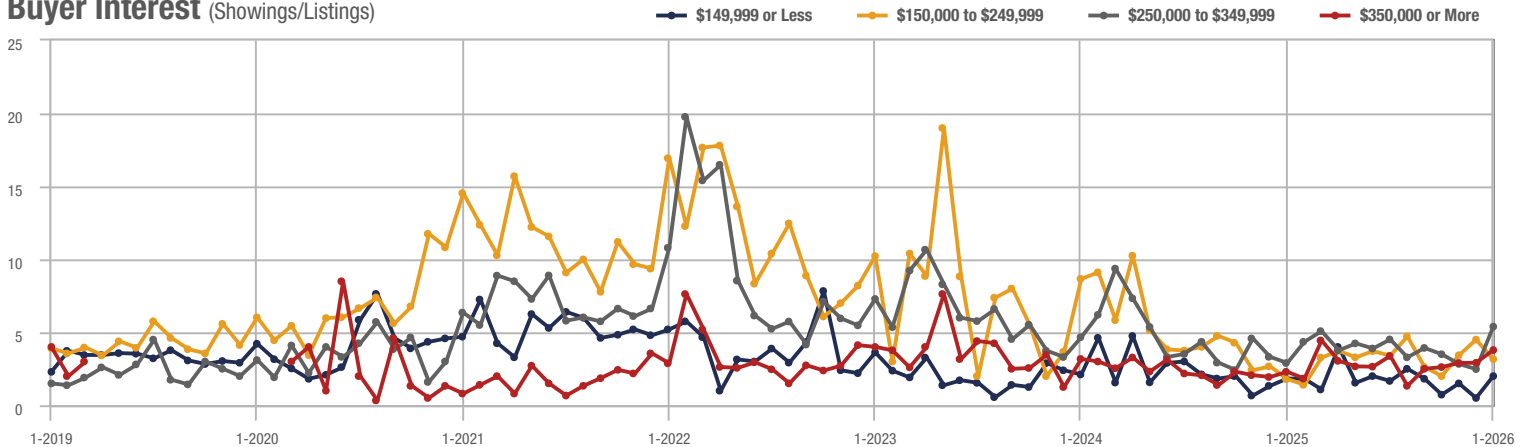
Cameron

Price Range	Total Showings			Buyer Interest (Showings/Listings)			Managed Listings		
	January 2026	Year-Over-Year Change	Month-Over-Month Change	January 2026	Year-Over-Year Change	Month-Over-Month Change	January 2026	Year-Over-Year Change	Month-Over-Month Change
\$149,999 or Less	18	+ 133.3%	+ 63.6%	2.0	+ 11.1%	+ 300.0%	11	- 38.9%	- 15.4%
\$150,000 to \$249,999	21	+ 133.3%	- 43.2%	3.2	+ 77.8%	- 29.6%	9	+ 28.6%	- 18.2%
\$250,000 to \$349,999	99	+ 54.7%	+ 54.7%	5.4	+ 86.2%	+ 117.4%	21	- 22.2%	- 25.0%
\$350,000 or More	115	+ 36.9%	+ 59.7%	3.8	+ 65.2%	+ 30.0%	38	- 38.7%	+ 11.8%
Total	253	+ 48.8%	+ 37.5%	4.0	+ 114.8%	+ 49.7%	79	- 30.7%	- 8.1%

Showings



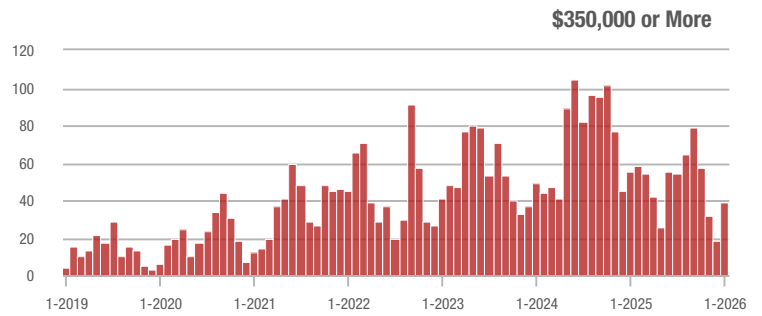
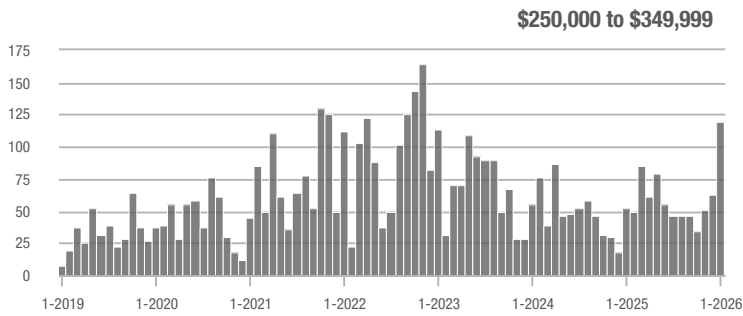
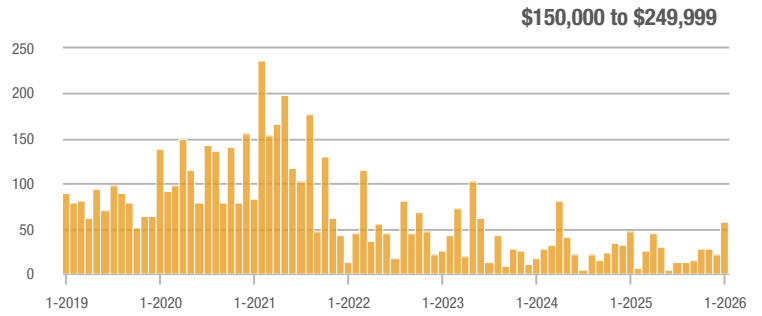
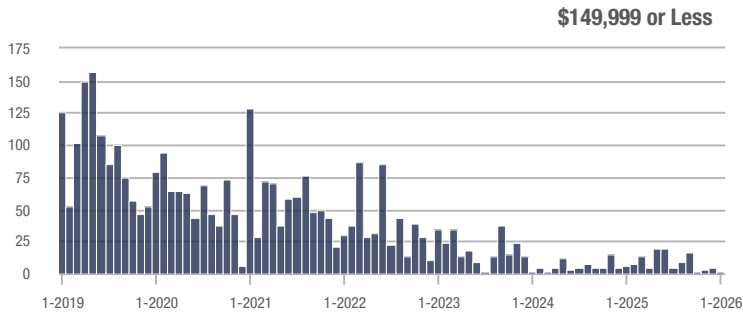
Buyer Interest (Showings/Listings)



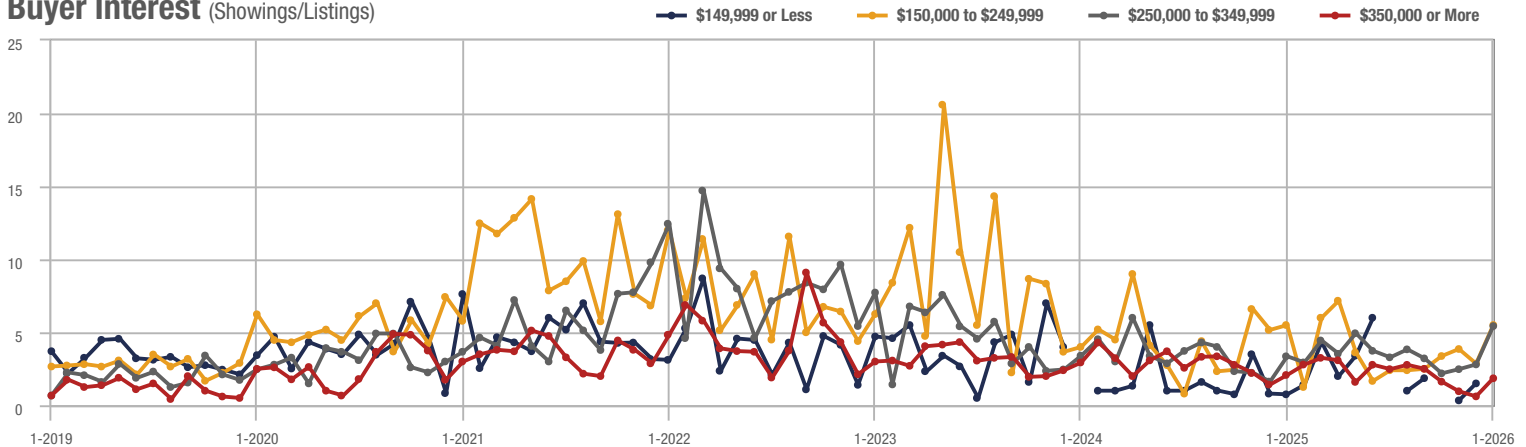
Zip Code 27330

Price Range	Total Showings			Buyer Interest (Showings/Listings)			Managed Listings		
	January 2026	Year-Over-Year Change	Month-Over-Month Change	January 2026	Year-Over-Year Change	Month-Over-Month Change	January 2026	Year-Over-Year Change	Month-Over-Month Change
\$149,999 or Less	1	+ 18.8%	- 75.0%	—	—	—	4	- 73.3%	- 42.9%
\$150,000 to \$249,999	57	+ 18.8%	+ 159.1%	5.5	0.0%	+ 92.5%	11	+ 10.0%	+ 37.5%
\$250,000 to \$349,999	120	+ 126.4%	+ 90.5%	5.4	+ 58.8%	+ 93.9%	26	+ 44.4%	+ 4.0%
\$350,000 or More	39	- 29.1%	+ 116.7%	1.9	- 9.5%	+ 203.9%	31	0.0%	- 8.8%
Total	217	+ 34.0%	+ 102.8%	4.0	+ 37.7%	+ 108.4%	72	- 2.7%	- 2.7%

Showings



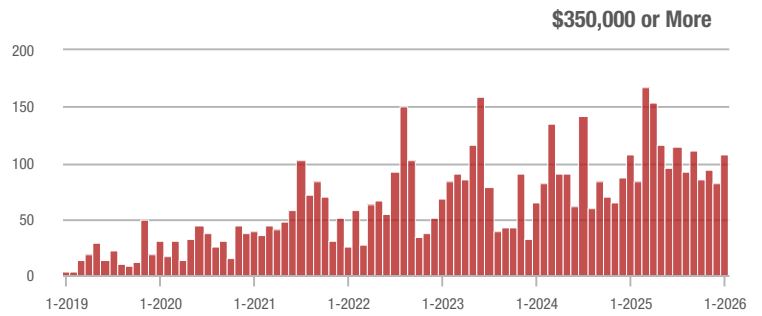
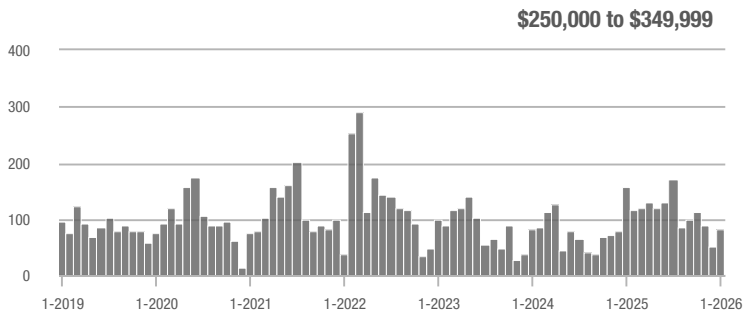
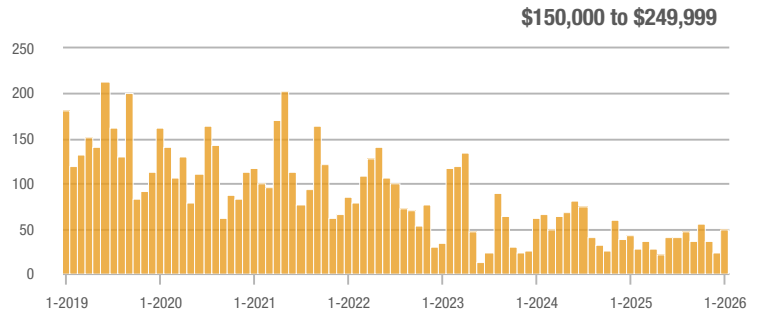
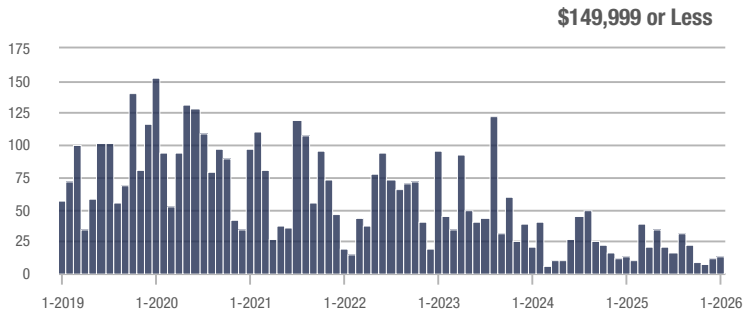
Buyer Interest (Showings/Listings)



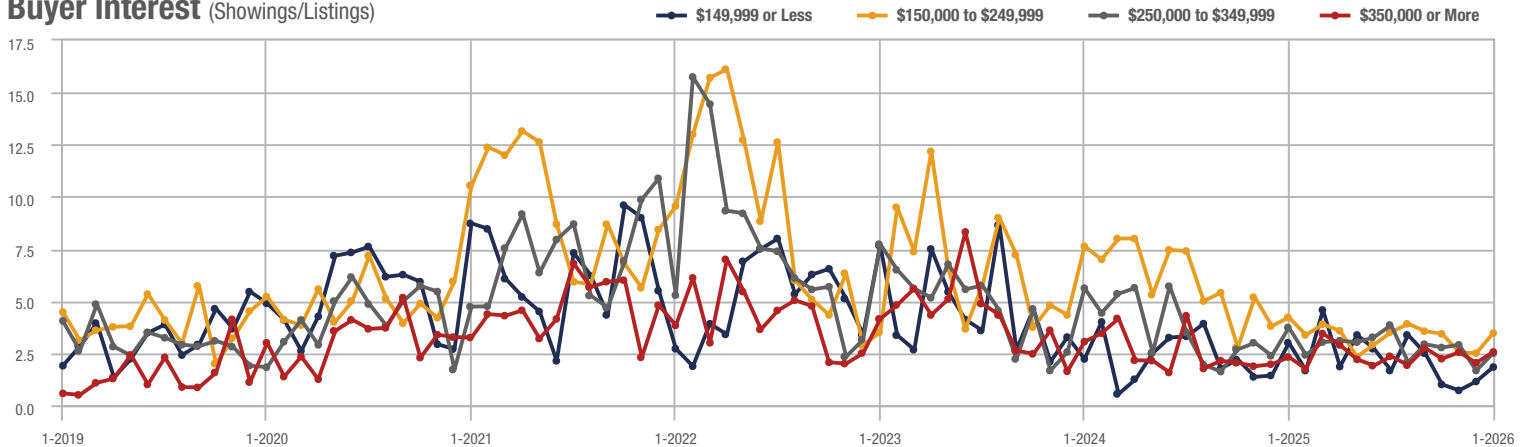
Zip Code 28312

Price Range	Total Showings			Buyer Interest (Showings/Listings)			Managed Listings		
	January 2026	Year-Over-Year Change	Month-Over-Month Change	January 2026	Year-Over-Year Change	Month-Over-Month Change	January 2026	Year-Over-Year Change	Month-Over-Month Change
\$149,999 or Less	14	+ 16.7%	+ 16.7%	1.8	- 40.0%	+ 60.4%	11	- 35.3%	- 15.4%
\$150,000 to \$249,999	49	+ 16.7%	+ 113.0%	3.5	- 16.7%	+ 38.5%	17	+ 41.7%	+ 41.7%
\$250,000 to \$349,999	83	- 47.1%	+ 66.0%	2.5	- 32.4%	+ 50.0%	36	- 41.9%	+ 9.1%
\$350,000 or More	108	+ 0.9%	+ 31.7%	2.6	+ 13.0%	+ 25.7%	43	- 31.7%	+ 10.3%
Total	254	- 20.4%	+ 52.1%	2.6	+ 14.6%	+ 37.9%	107	- 30.5%	+ 10.3%

Showings



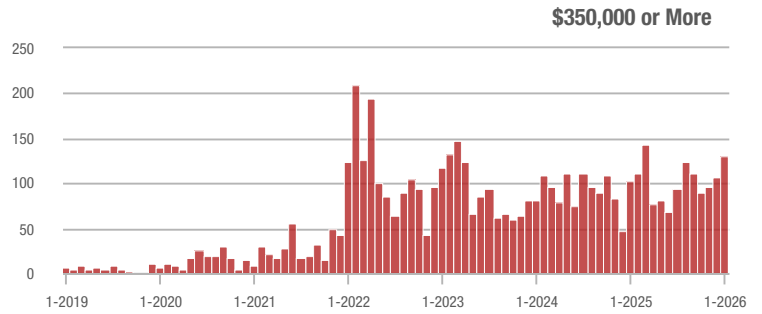
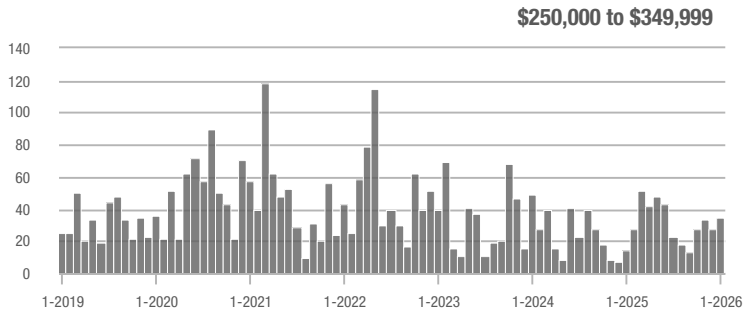
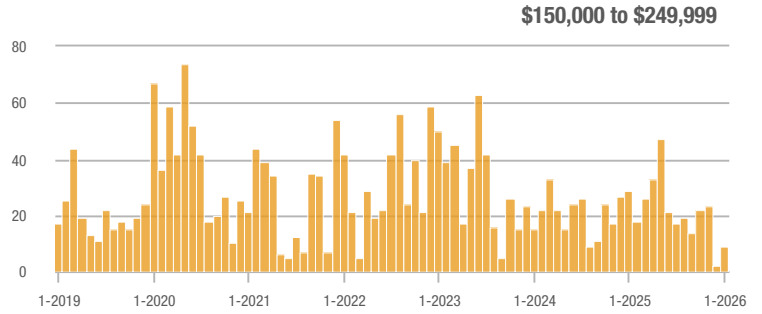
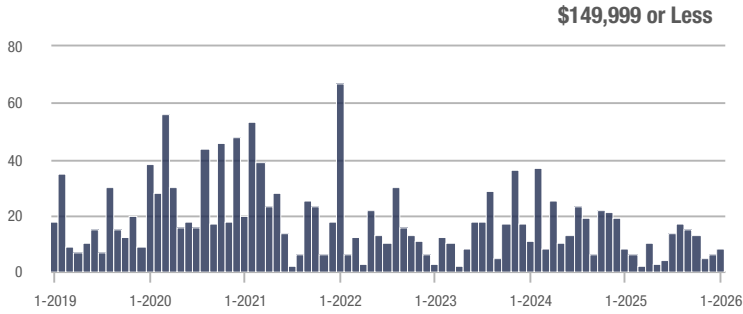
Buyer Interest (Showings/Listings)



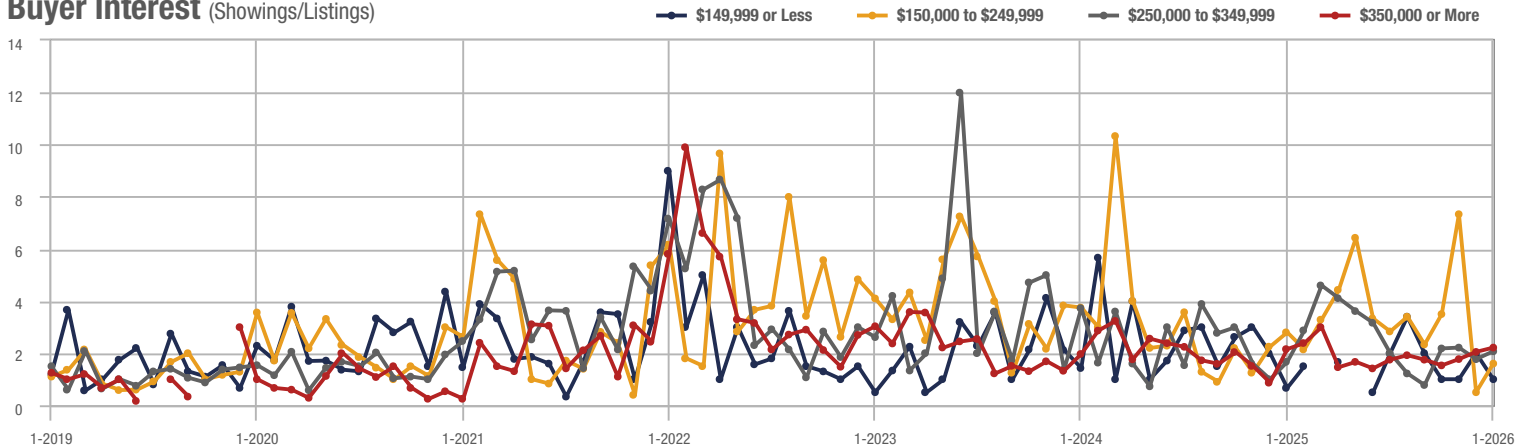
Moore County

Price Range	Total Showings			Buyer Interest (Showings/Listings)			Managed Listings		
	January 2026	Year-Over-Year Change	Month-Over-Month Change	January 2026	Year-Over-Year Change	Month-Over-Month Change	January 2026	Year-Over-Year Change	Month-Over-Month Change
\$149,999 or Less	8	- 69.0%	+ 33.3%	1.0	+ 42.9%	- 50.0%	9	- 43.8%	0.0%
\$150,000 to \$249,999	9	- 69.0%	+ 350.0%	1.6	- 42.9%	+ 220.0%	6	- 53.8%	0.0%
\$250,000 to \$349,999	35	+ 150.0%	+ 29.6%	2.1	+ 23.5%	+ 17.1%	24	+ 60.0%	0.0%
\$350,000 or More	131	+ 27.2%	+ 23.6%	2.2	0.0%	+ 8.1%	77	- 11.5%	- 9.4%
Total	183	+ 18.8%	+ 29.8%	2.1	+ 34.2%	+ 38.7%	116	- 11.5%	- 6.5%

Showings



Buyer Interest (Showings/Listings)

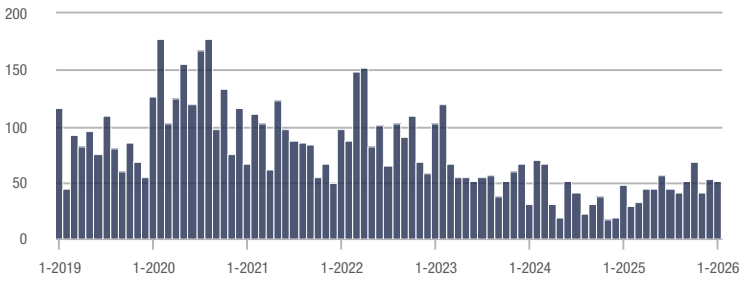


Lumberton

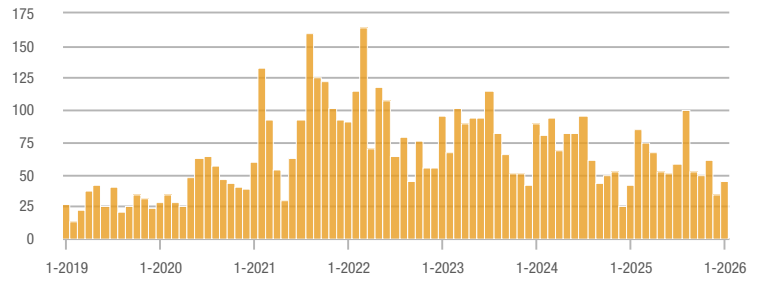
Price Range	Total Showings			Buyer Interest (Showings/Listings)			Managed Listings		
	January 2026	Year-Over-Year Change	Month-Over-Month Change	January 2026	Year-Over-Year Change	Month-Over-Month Change	January 2026	Year-Over-Year Change	Month-Over-Month Change
\$149,999 or Less	51	+ 7.1%	- 3.8%	2.6	- 16.1%	- 6.3%	27	+ 17.4%	- 3.6%
\$150,000 to \$249,999	45	+ 7.1%	+ 32.4%	1.6	- 11.1%	+ 55.6%	31	+ 14.8%	- 11.4%
\$250,000 to \$349,999	28	- 15.2%	- 30.0%	1.3	- 23.5%	- 43.9%	24	0.0%	+ 9.1%
\$350,000 or More	13	+ 62.5%	- 23.5%	0.8	+ 166.7%	+ 14.5%	17	- 15.0%	- 19.0%
Total	137	+ 4.6%	- 4.9%	1.6	- 0.7%	+ 1.9%	99	+ 5.3%	- 6.6%

Showings

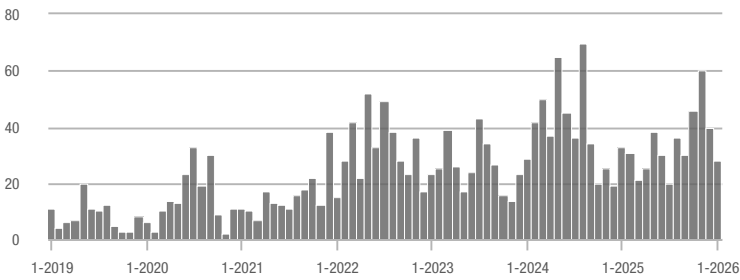
\$149,999 or Less



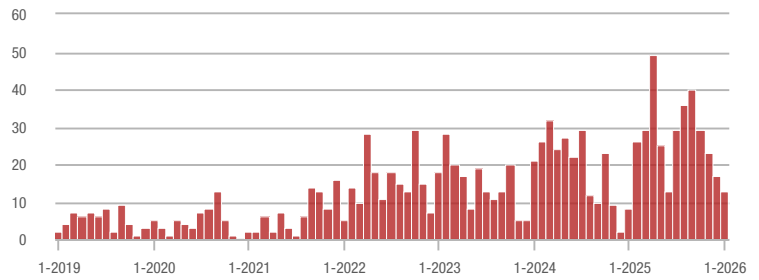
\$150,000 to \$249,999



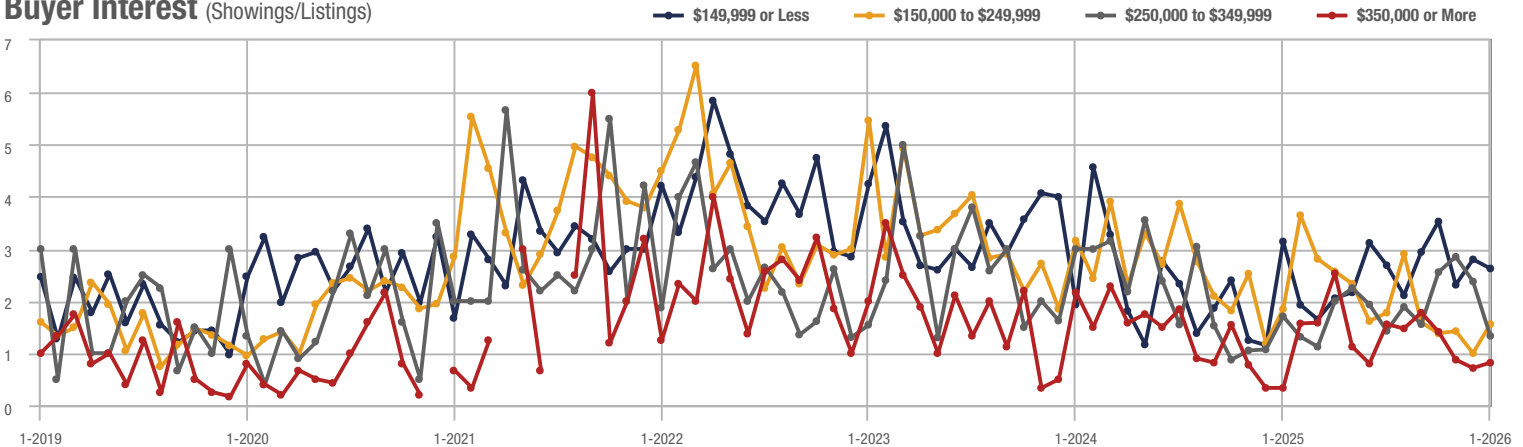
\$250,000 to \$349,999



\$350,000 or More



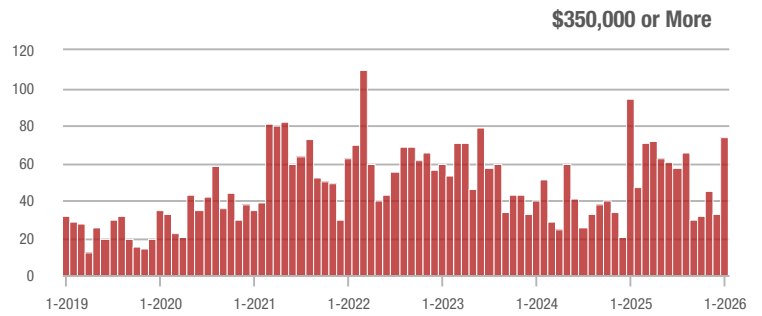
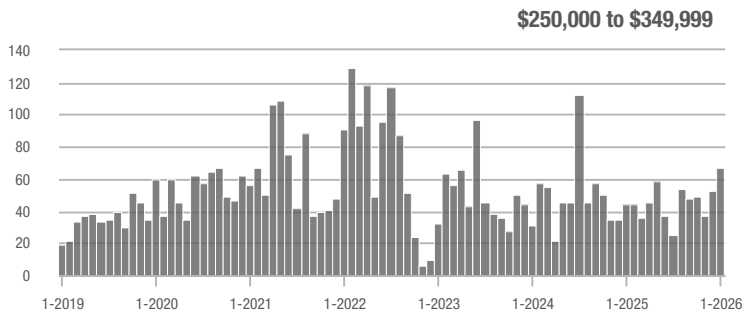
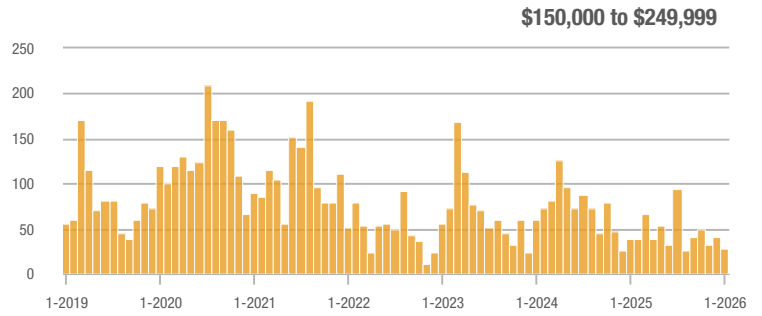
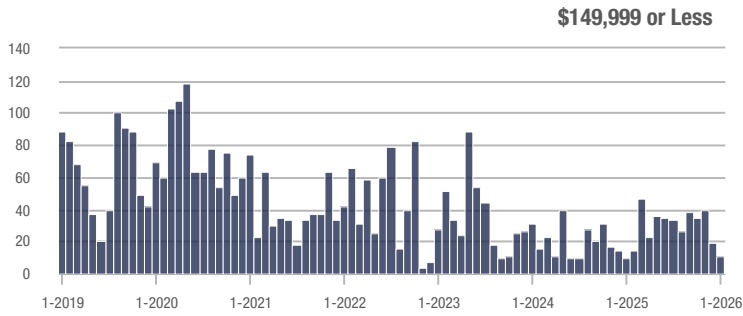
Buyer Interest (Showings/Listings)



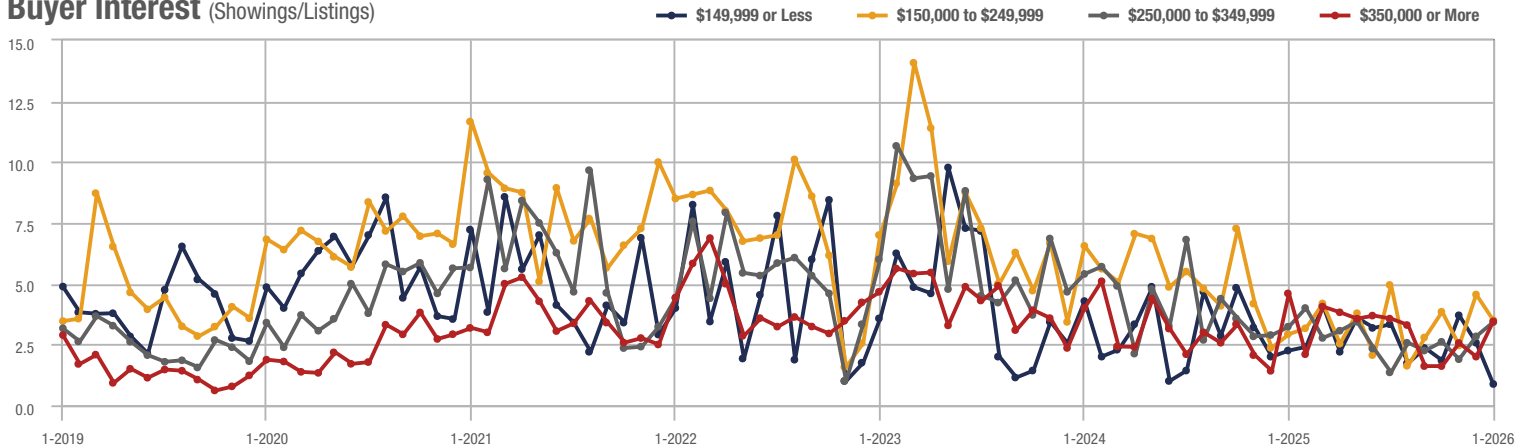
Zip Code 28305

Price Range	Total Showings			Buyer Interest (Showings/Listings)			Managed Listings		
	January 2026	Year-Over-Year Change	Month-Over-Month Change	January 2026	Year-Over-Year Change	Month-Over-Month Change	January 2026	Year-Over-Year Change	Month-Over-Month Change
\$149,999 or Less	11	- 26.3%	- 42.1%	0.9	- 60.9%	- 66.0%	12	0.0%	- 7.7%
\$150,000 to \$249,999	28	- 26.3%	- 31.7%	3.5	+ 20.7%	- 23.2%	8	- 38.5%	- 20.0%
\$250,000 to \$349,999	67	+ 52.3%	+ 26.4%	3.4	+ 6.3%	+ 20.7%	21	+ 50.0%	+ 5.0%
\$350,000 or More	74	- 21.3%	+ 124.2%	3.5	- 23.9%	+ 72.5%	25	+ 4.2%	+ 19.0%
Total	180	- 3.2%	+ 23.3%	3.1	- 7.6%	+ 19.6%	66	+ 4.8%	+ 3.1%

Showings



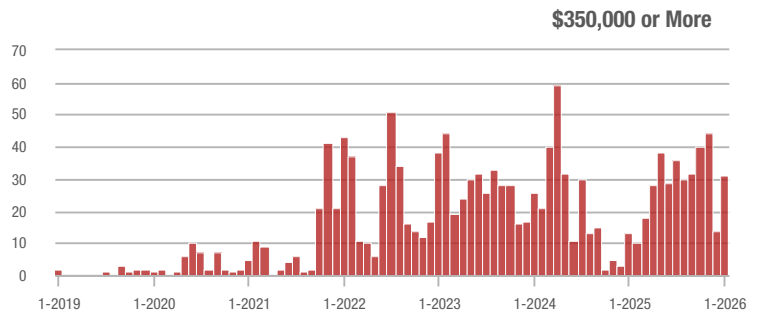
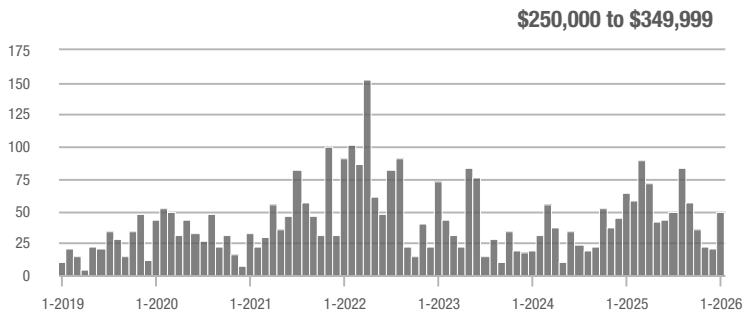
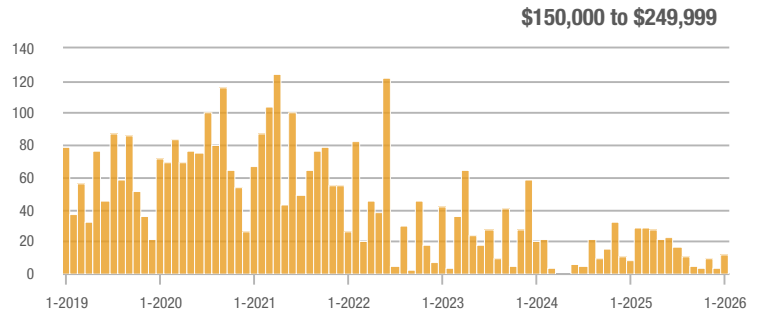
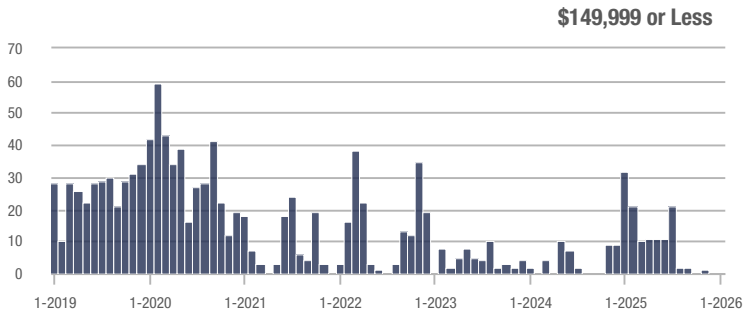
Buyer Interest (Showings/Listings)



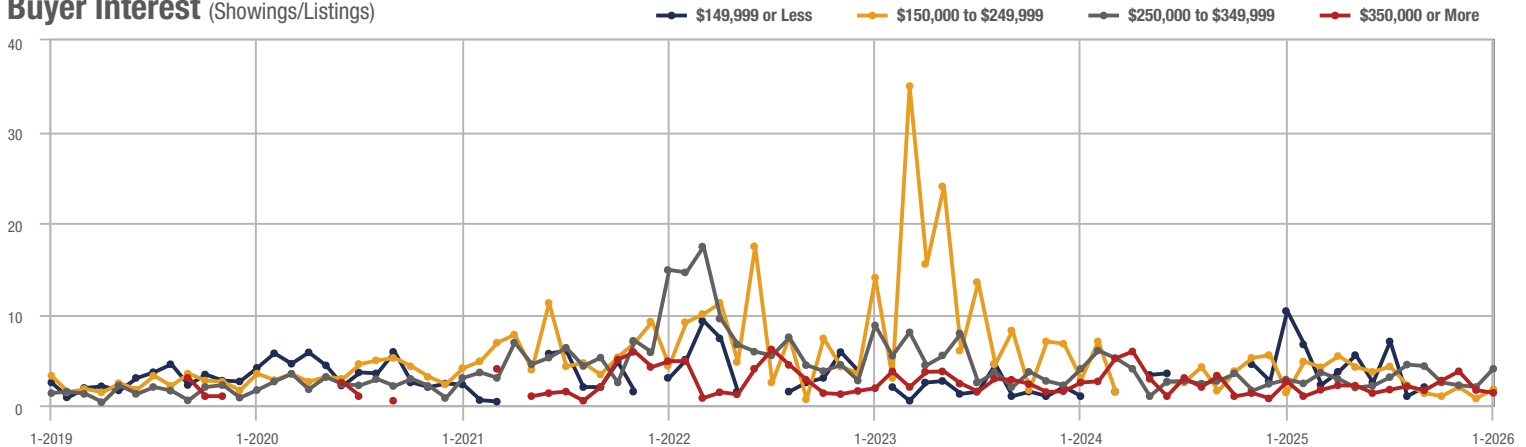
Lillington

Price Range	Total Showings			Buyer Interest (Showings/Listings)			Managed Listings		
	January 2026	Year-Over-Year Change	Month-Over-Month Change	January 2026	Year-Over-Year Change	Month-Over-Month Change	January 2026	Year-Over-Year Change	Month-Over-Month Change
\$149,999 or Less	0	—	—	—	—	—	0	—	—
\$150,000 to \$249,999	12	+ 50.0%	+ 300.0%	1.8	+ 28.6%	+ 133.3%	6	- 14.3%	0.0%
\$250,000 to \$349,999	50	- 21.9%	+ 138.1%	4.0	+ 42.9%	+ 100.0%	34	- 2.9%	- 2.9%
\$350,000 or More	31	+ 138.5%	+ 121.4%	1.4	- 46.2%	- 17.5%	25	+ 177.8%	+ 4.2%
Total	93	- 20.5%	+ 144.7%	2.5	- 31.5%	+ 144.7%	65	+ 16.1%	0.0%

Showings



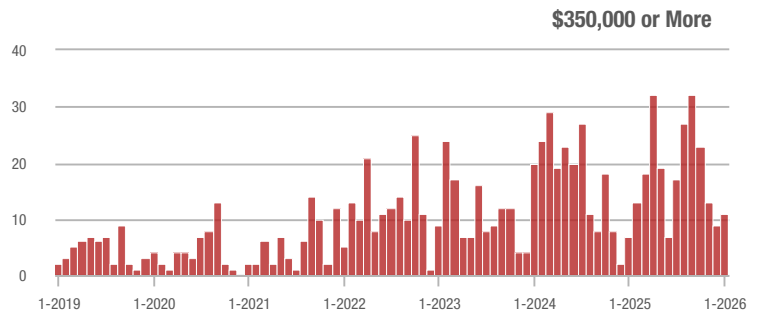
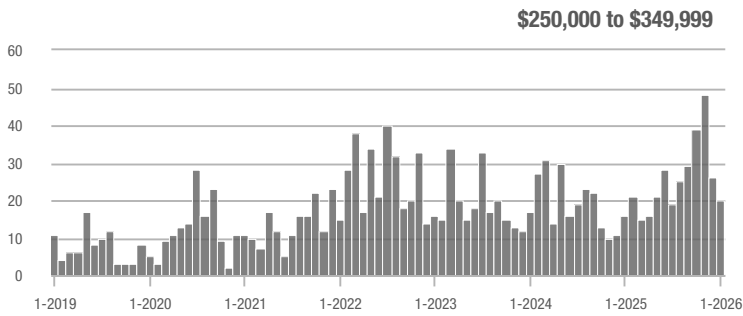
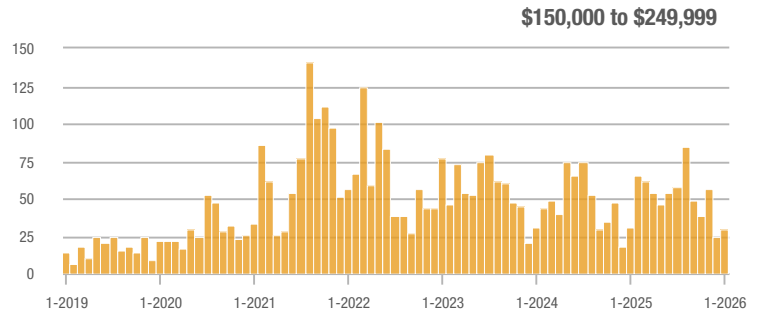
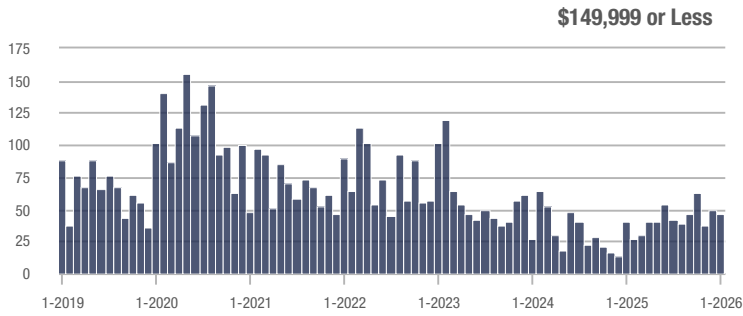
Buyer Interest (Showings/Listings)



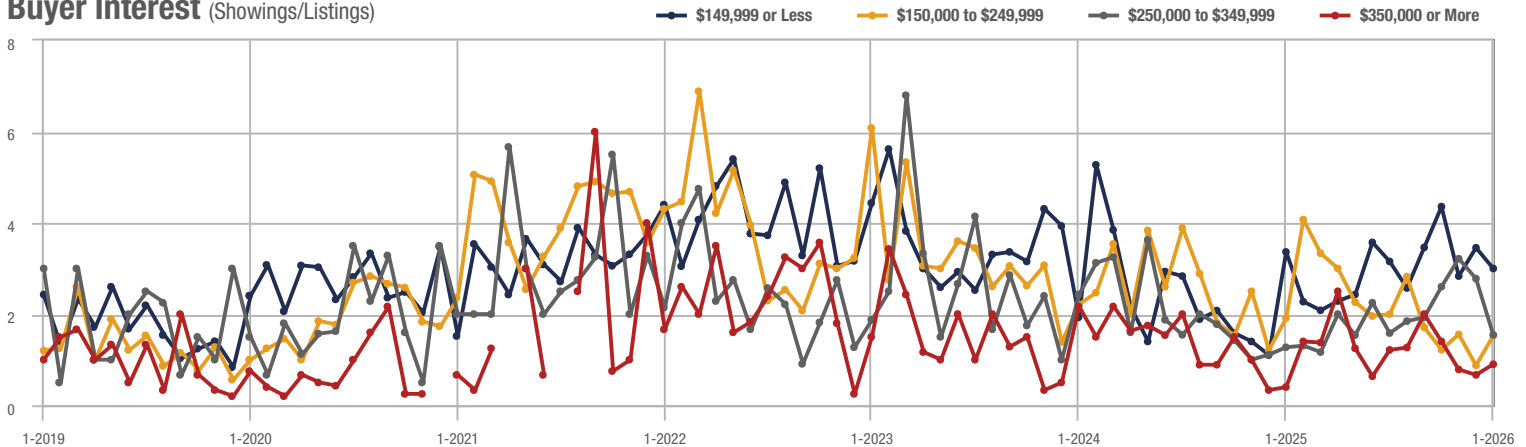
Zip Code 28358

Price Range	Total Showings			Buyer Interest (Showings/Listings)			Managed Listings		
	January 2026	Year-Over-Year Change	Month-Over-Month Change	January 2026	Year-Over-Year Change	Month-Over-Month Change	January 2026	Year-Over-Year Change	Month-Over-Month Change
\$149,999 or Less	47	- 3.2%	- 4.1%	3.0	- 11.8%	- 13.2%	23	+ 15.0%	0.0%
\$150,000 to \$249,999	30	- 3.2%	+ 20.0%	1.5	- 21.1%	+ 74.4%	22	+ 22.2%	- 21.4%
\$250,000 to \$349,999	20	+ 25.0%	- 23.1%	1.5	+ 15.4%	- 44.4%	16	+ 14.3%	+ 14.3%
\$350,000 or More	11	+ 57.1%	+ 22.2%	0.9	+ 125.0%	+ 35.0%	14	+ 16.7%	- 17.6%
Total	108	+ 13.7%	- 0.9%	1.8	- 3.0%	+ 8.3%	75	+ 17.2%	- 8.5%

Showings



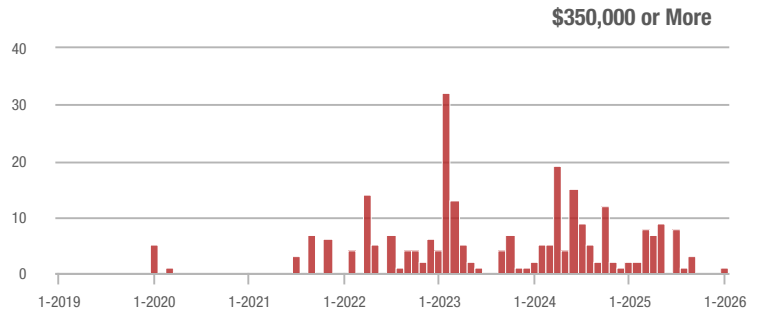
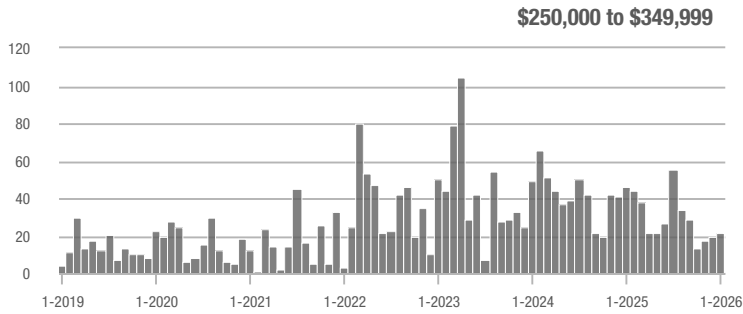
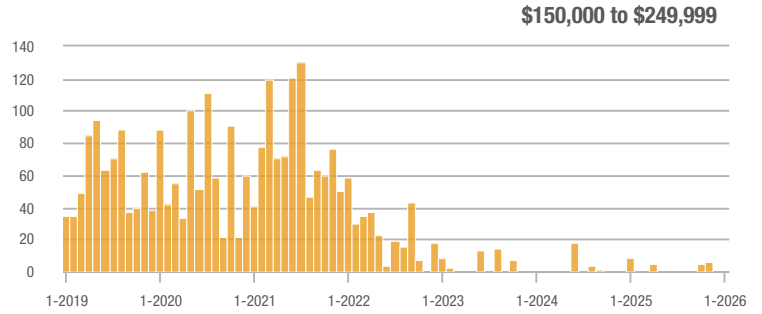
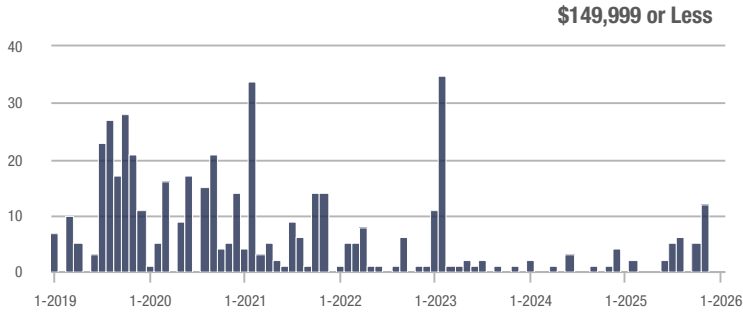
Buyer Interest (Showings/Listings)



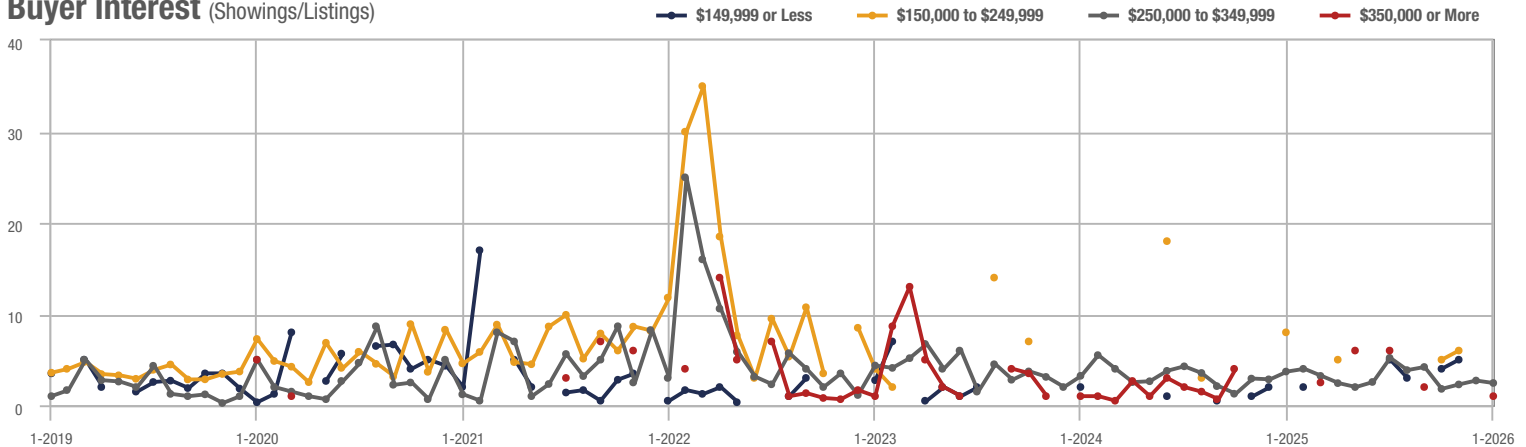
Bunnlevel

Price Range	Total Showings			Buyer Interest (Showings/Listings)			Managed Listings		
	January 2026	Year-Over-Year Change	Month-Over-Month Change	January 2026	Year-Over-Year Change	Month-Over-Month Change	January 2026	Year-Over-Year Change	Month-Over-Month Change
\$149,999 or Less	0	—	—	—	—	—	0	—	—
\$150,000 to \$249,999	0	—	—	—	—	—	0	—	—
\$250,000 to \$349,999	22	- 52.2%	+ 15.8%	2.4	- 35.1%	- 9.9%	9	- 47.1%	+ 28.6%
\$350,000 or More	1	- 50.0%	—	1.0	—	—	1	- 75.0%	0.0%
Total	23	- 58.9%	+ 21.1%	2.3	- 9.6%	+ 21.1%	10	- 54.5%	0.0%

Showings



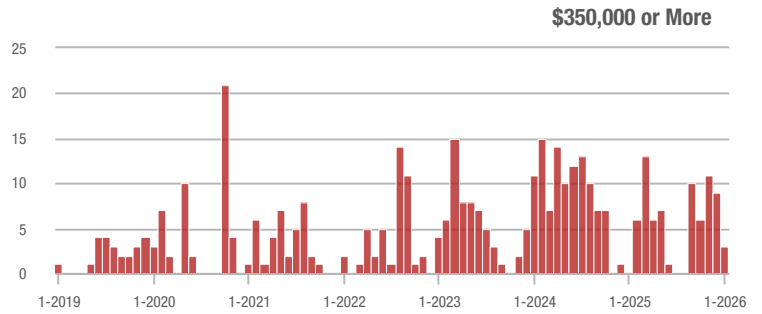
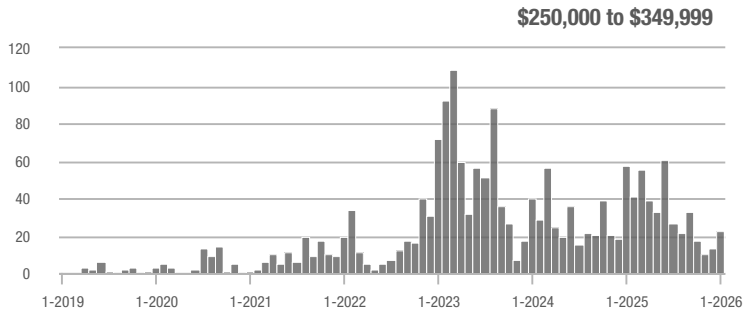
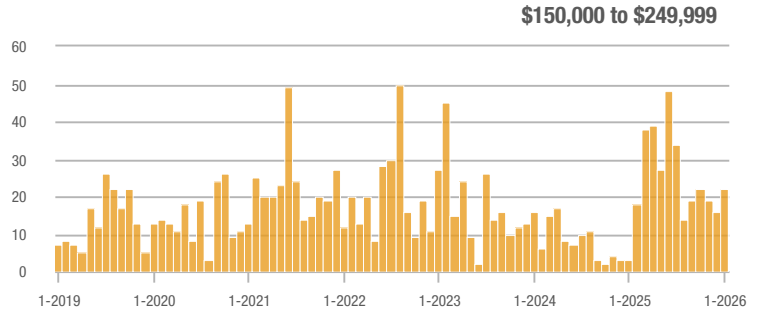
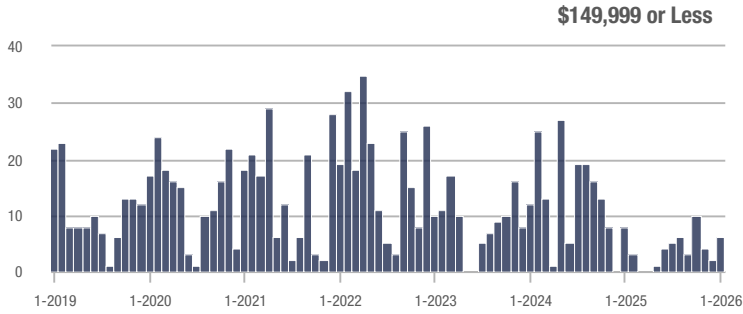
Buyer Interest (Showings/Listings)



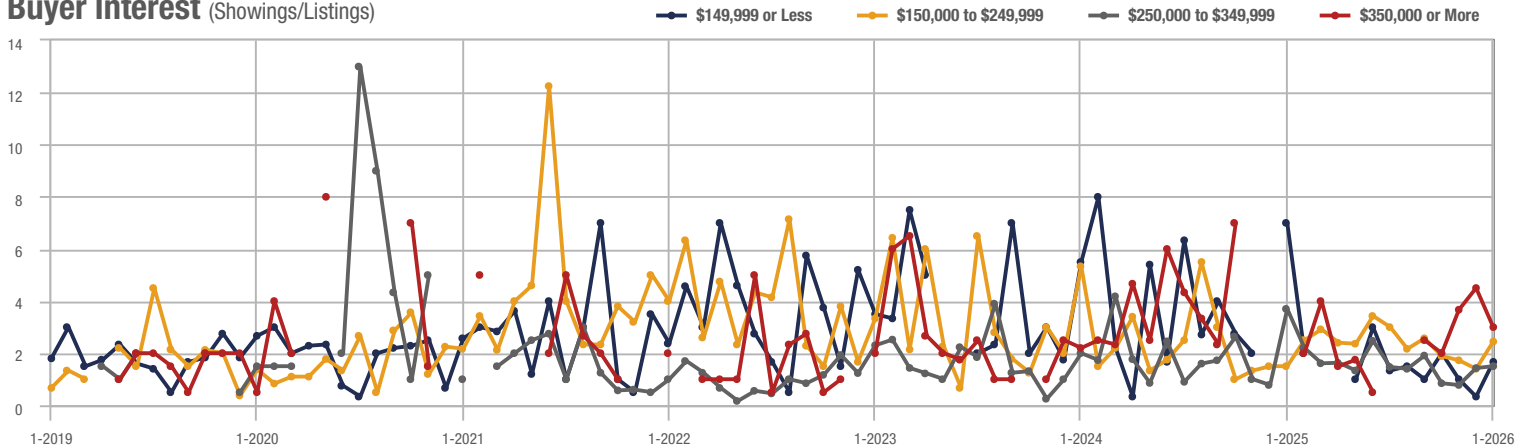
Sampson County

Price Range	Total Showings			Buyer Interest (Showings/Listings)			Managed Listings		
	January 2026	Year-Over-Year Change	Month-Over-Month Change	January 2026	Year-Over-Year Change	Month-Over-Month Change	January 2026	Year-Over-Year Change	Month-Over-Month Change
\$149,999 or Less	6	+ 633.3%	+ 200.0%	1.7	- 75.7%	+ 400.0%	5	+ 66.7%	0.0%
\$150,000 to \$249,999	22	+ 633.3%	+ 37.5%	2.4	+ 60.0%	+ 74.6%	12	+ 140.0%	- 7.7%
\$250,000 to \$349,999	23	- 59.6%	+ 76.9%	1.5	- 59.5%	+ 5.0%	19	- 42.4%	0.0%
\$350,000 or More	3	—	- 66.7%	3.0	—	- 33.3%	1	0.0%	- 50.0%
Total	54	- 20.6%	+ 35.0%	2.0	- 9.9%	+ 42.3%	37	- 11.9%	- 5.1%

Showings



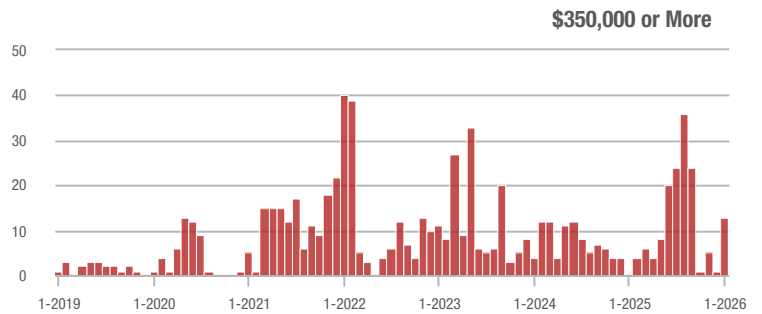
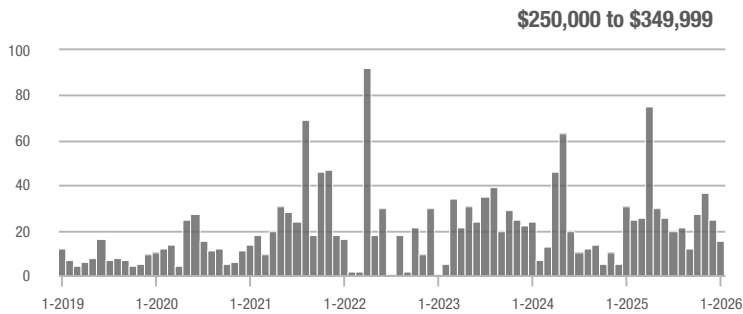
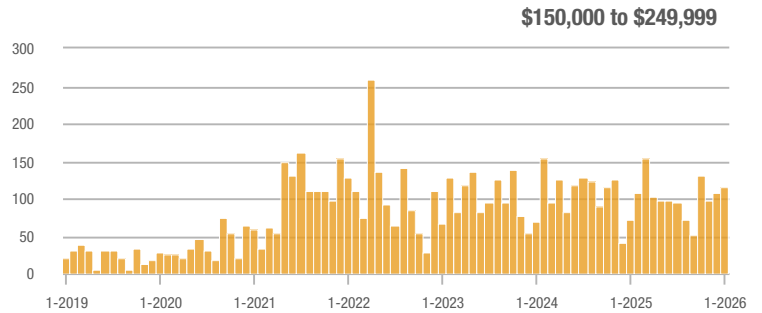
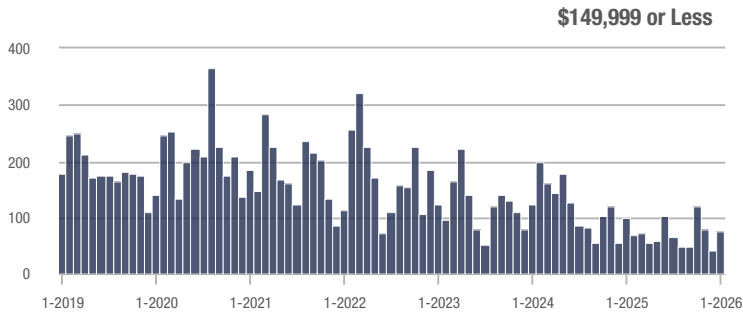
Buyer Interest (Showings/Listings)



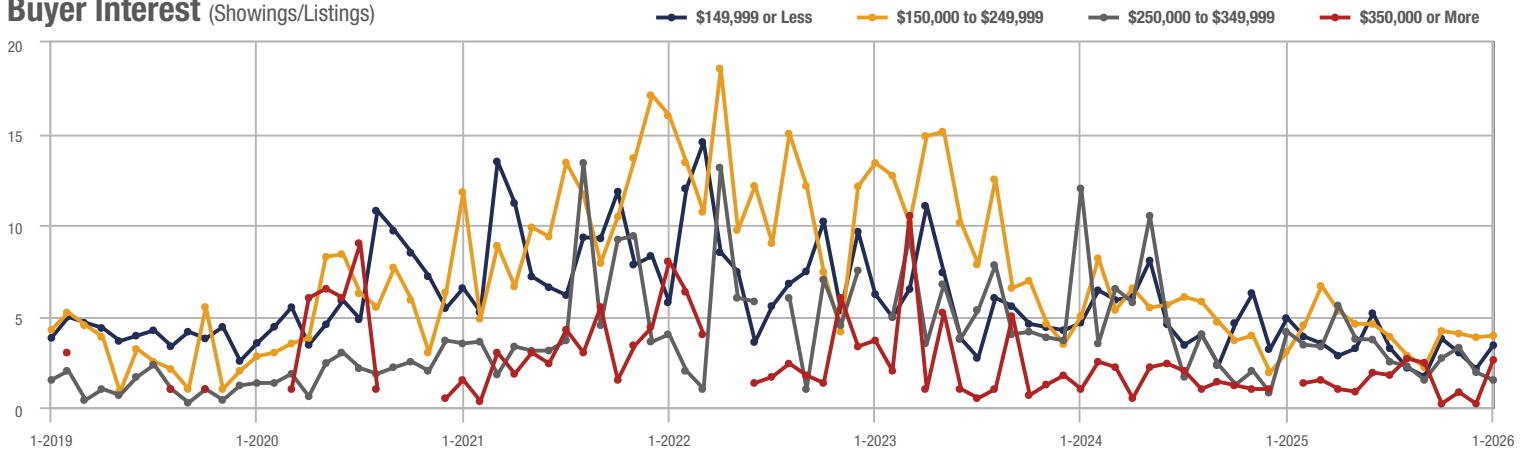
Zip Code 28301

Price Range	Total Showings			Buyer Interest (Showings/Listings)			Managed Listings		
	January 2026	Year-Over-Year Change	Month-Over-Month Change	January 2026	Year-Over-Year Change	Month-Over-Month Change	January 2026	Year-Over-Year Change	Month-Over-Month Change
\$149,999 or Less	76	+ 58.9%	+ 90.0%	3.4	- 30.6%	+ 61.1%	28	- 9.7%	- 6.7%
\$150,000 to \$249,999	116	+ 58.9%	+ 8.4%	3.9	+ 30.0%	+ 2.3%	32	+ 23.1%	+ 3.2%
\$250,000 to \$349,999	15	- 51.6%	- 40.0%	1.5	- 63.4%	- 22.0%	10	+ 11.1%	- 28.6%
\$350,000 or More	13	—	+ 1,200.0%	2.6	—	+ 1,200.0%	6	+ 100.0%	0.0%
Total	220	+ 8.9%	+ 27.2%	3.3	- 1.1%	+ 35.5%	76	+ 10.1%	- 6.2%

Showings



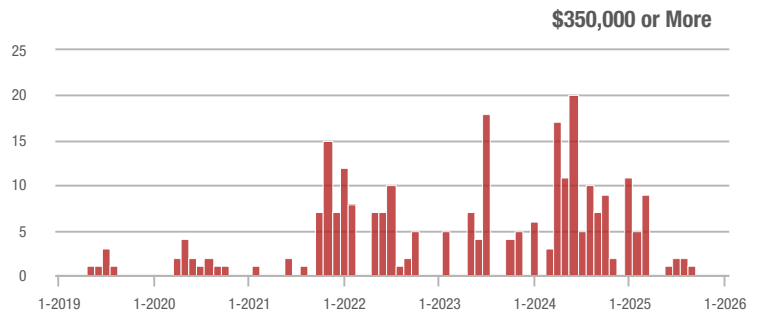
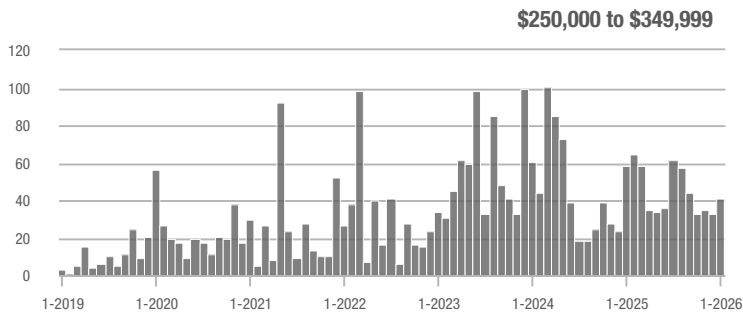
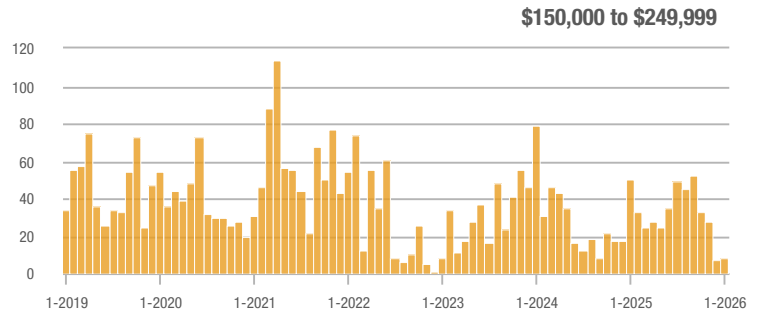
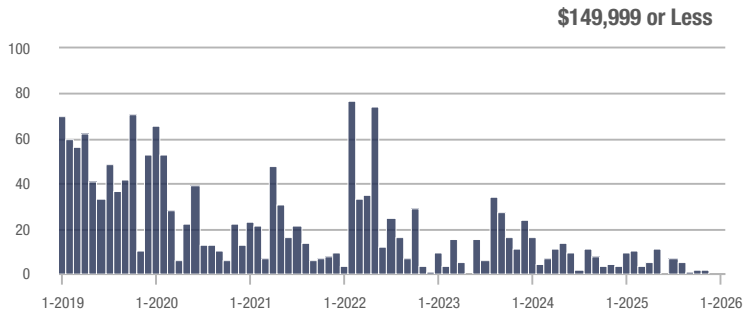
Buyer Interest (Showings/Listings)



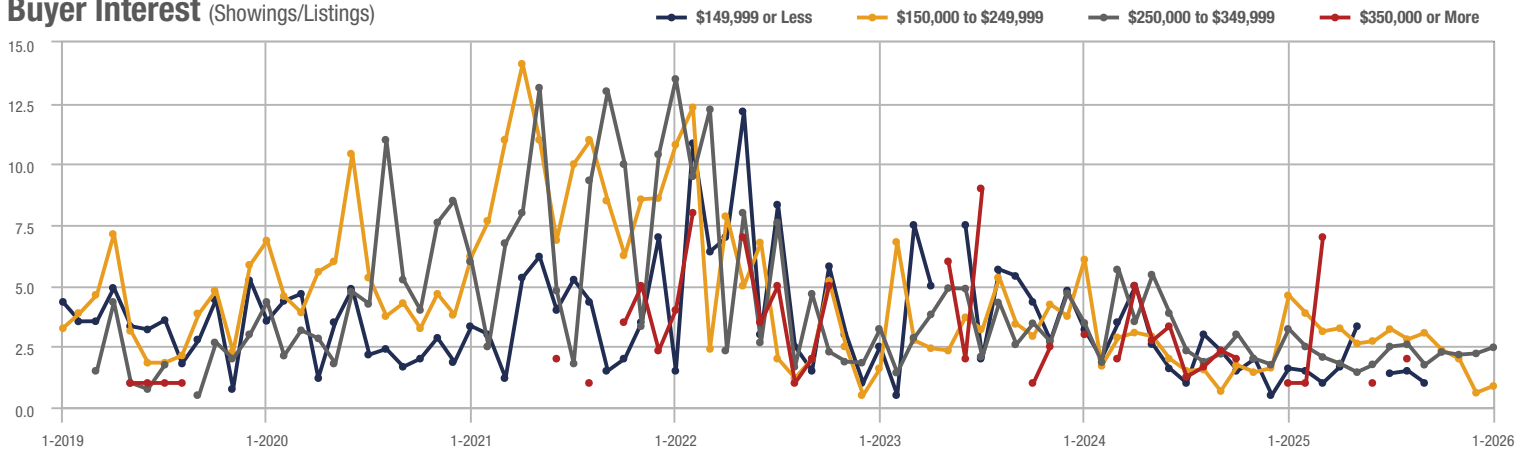
Parkton

Price Range	Total Showings			Buyer Interest (Showings/Listings)			Managed Listings		
	January 2026	Year-Over-Year Change	Month-Over-Month Change	January 2026	Year-Over-Year Change	Month-Over-Month Change	January 2026	Year-Over-Year Change	Month-Over-Month Change
\$149,999 or Less	0	—	—	—	—	—	1	- 85.7%	- 50.0%
\$150,000 to \$249,999	8	- 84.0%	+ 14.3%	0.9	- 80.4%	+ 45.8%	12	0.0%	- 14.3%
\$250,000 to \$349,999	41	- 29.3%	+ 24.2%	2.5	- 21.9%	+ 11.4%	21	- 19.2%	- 4.5%
\$350,000 or More	0	—	—	—	—	—	0	—	—
Total	49	- 61.7%	+ 22.5%	1.9	- 42.6%	+ 36.9%	34	- 33.3%	- 10.5%

Showings



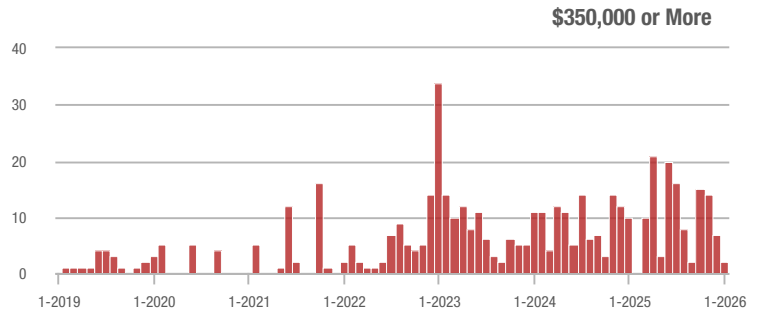
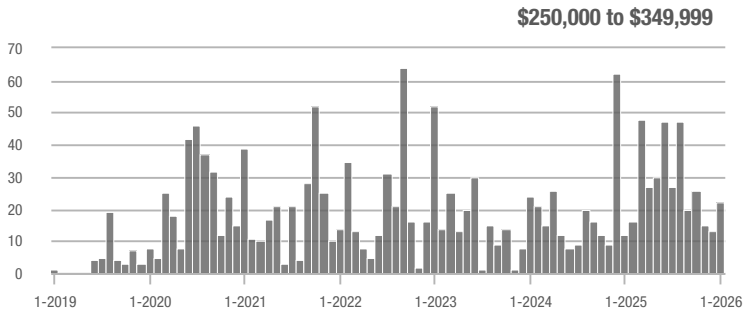
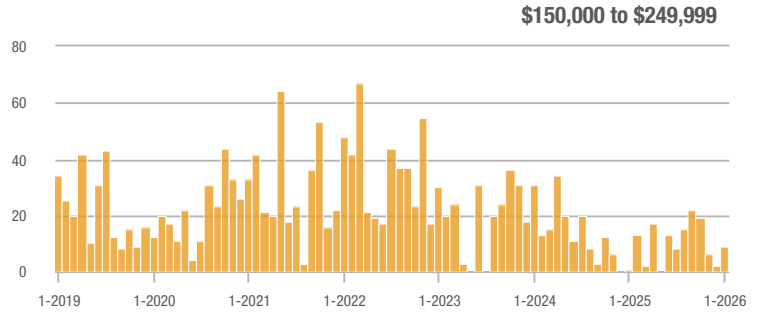
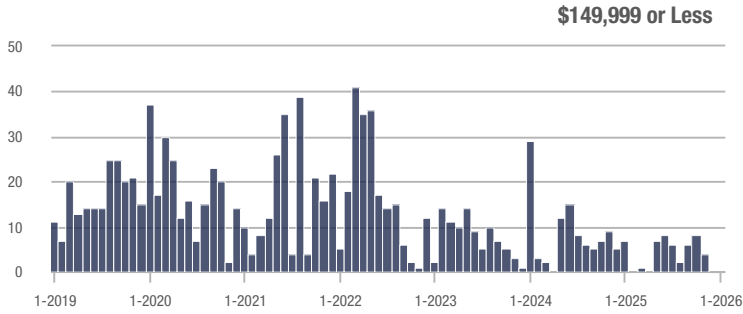
Buyer Interest (Showings/Listings)



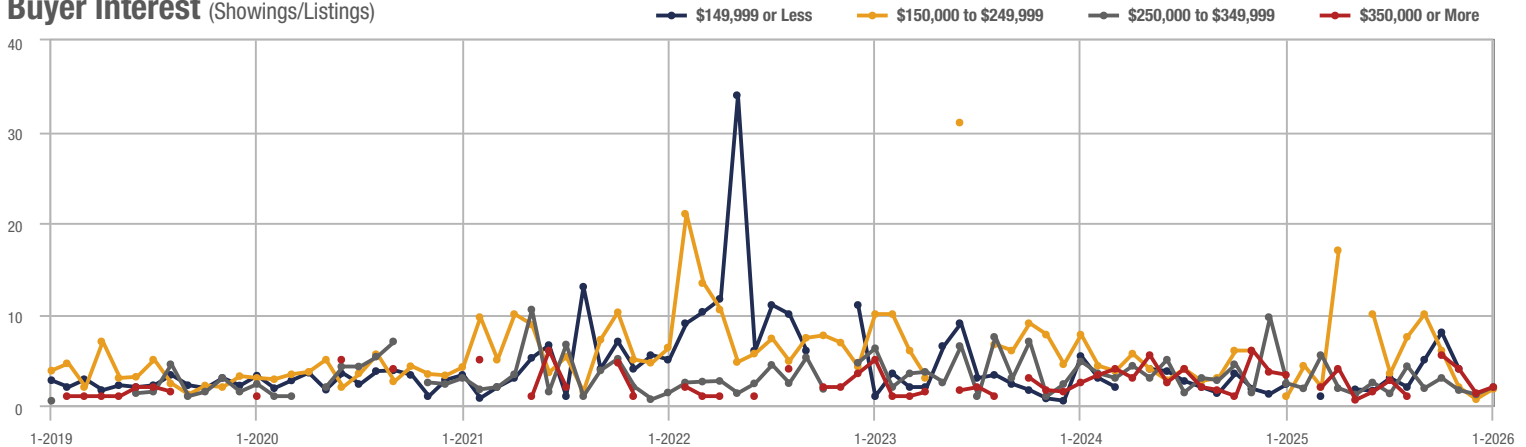
Stedman

Price Range	Total Showings			Buyer Interest (Showings/Listings)			Managed Listings		
	January 2026	Year-Over-Year Change	Month-Over-Month Change	January 2026	Year-Over-Year Change	Month-Over-Month Change	January 2026	Year-Over-Year Change	Month-Over-Month Change
\$149,999 or Less	0	—	—	—	—	—	0	—	—
\$150,000 to \$249,999	9	+ 800.0%	+ 350.0%	1.8	+ 80.0%	+ 170.0%	5	+ 400.0%	+ 66.7%
\$250,000 to \$349,999	22	+ 83.3%	+ 69.2%	2.0	- 16.7%	+ 66.7%	10	- 9.1%	+ 11.1%
\$350,000 or More	2	- 80.0%	- 71.4%	2.0	- 39.4%	+ 50.0%	1	- 75.0%	- 83.3%
Total	33	+ 10.0%	+ 50.0%	1.9	+ 30.6%	+ 68.8%	16	- 15.8%	- 11.1%

Showings



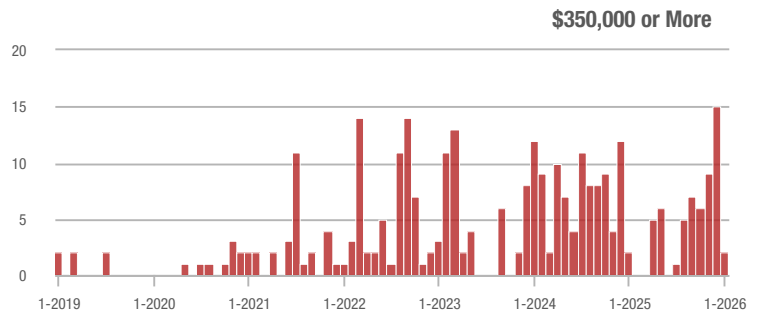
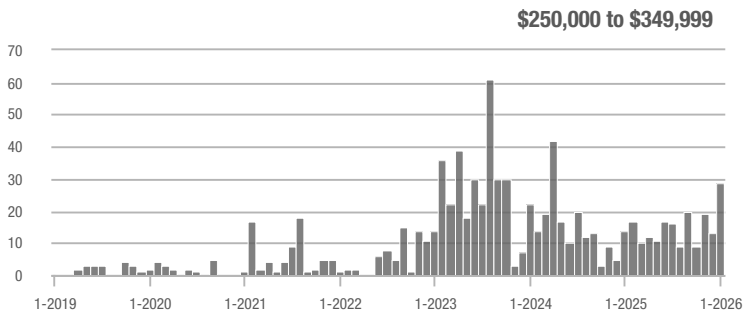
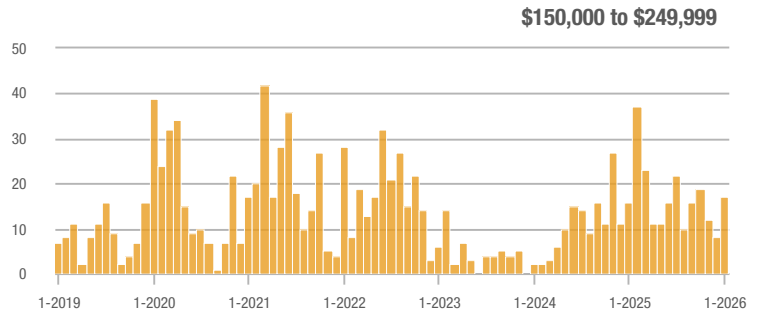
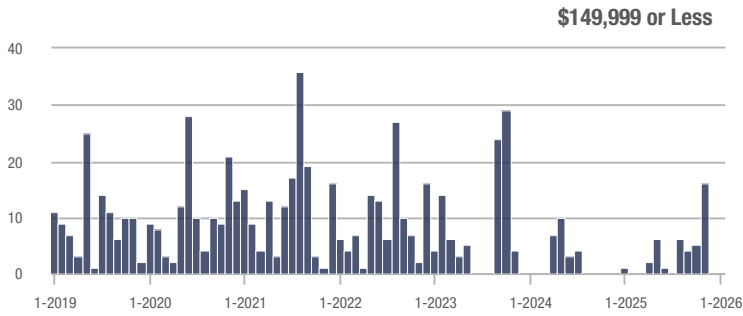
Buyer Interest (Showings/Listings)



Dunn

Price Range	Total Showings			Buyer Interest (Showings/Listings)			Managed Listings		
	January 2026	Year-Over-Year Change	Month-Over-Month Change	January 2026	Year-Over-Year Change	Month-Over-Month Change	January 2026	Year-Over-Year Change	Month-Over-Month Change
\$149,999 or Less	0	—	—	—	—	—	1	0.0%	- 50.0%
\$150,000 to \$249,999	17	+ 6.3%	+ 112.5%	2.5	+ 25.0%	+ 56.3%	8	0.0%	+ 14.3%
\$250,000 to \$349,999	29	+ 107.1%	+ 123.1%	1.5	- 66.7%	+ 16.4%	18	+ 125.0%	+ 12.5%
\$350,000 or More	2	0.0%	- 86.7%	0.3	- 70.0%	- 89.7%	5	+ 150.0%	- 28.6%
Total	48	+ 45.5%	+ 33.3%	1.6	- 13.6%	+ 33.3%	32	+ 68.4%	0.0%

Showings



Buyer Interest (Showings/Listings)

