

Showing Statistics

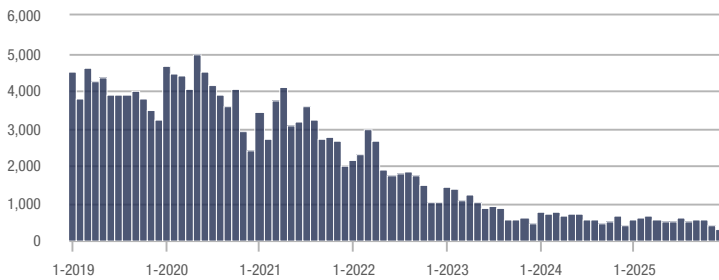
MLS Area	Total Showings	Buyer Interest (Showings / Listings)	Managed Listings
Cumberland County	3,694	2.9	1,437
Fayetteville	3,113	3.0	1,169
Harnett County	576	2.2	350
Zip Code 28314	687	3.3	233
Hoke County	682	3.1	291
Raeford	610	3.2	247
Sanford	379	2.5	188
Zip Code 28311	537	3.1	195
Zip Code 28306	621	3.4	207
Hope Mills	377	2.5	171
Lee County	248	2.3	133
Zip Code 28304	400	2.9	154
Zip Code 27332	269	2.8	115
Zip Code 28303	390	2.7	166
Spring Lake	229	2.6	112
Robeson County	248	1.4	211
Cameron	184	2.7	80
Zip Code 27330	107	1.8	73
Zip Code 28312	167	1.9	90
Moore County	141	1.9	102
Lumberton	144	1.6	102
Zip Code 28305	146	2.9	60
Lillington	38	1.6	50
Zip Code 28358	109	1.7	80
Bunnlevel	19	2.4	9
Sampson County	40	1.5	36
Zip Code 28301	173	2.7	76
Parkton	40	1.7	32
Stedman	22	1.1	17
Dunn	36	1.8	28

Cumberland County

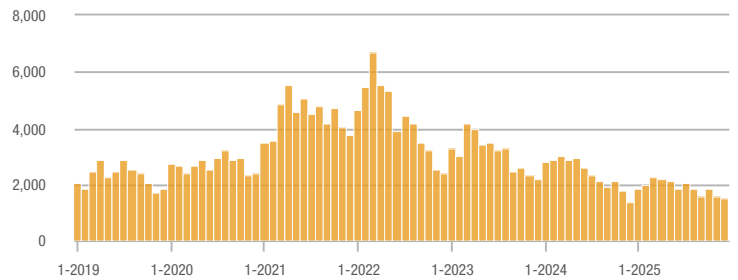
Price Range	Total Showings			Buyer Interest (Showings/Listings)			Managed Listings		
	December 2025	Year-Over-Year Change	Month-Over-Month Change	December 2025	Year-Over-Year Change	Month-Over-Month Change	December 2025	Year-Over-Year Change	Month-Over-Month Change
\$149,999 or Less	320	+ 11.5%	- 18.4%	1.8	- 25.0%	- 17.4%	231	- 9.8%	- 8.0%
\$150,000 to \$249,999	1,512	+ 11.5%	- 5.1%	3.6	- 5.3%	+ 1.8%	461	+ 15.3%	- 7.6%
\$250,000 to \$349,999	1,047	- 11.7%	- 15.3%	2.9	- 19.4%	- 7.8%	405	- 4.7%	- 11.4%
\$350,000 or More	815	+ 42.7%	+ 3.7%	2.6	+ 30.0%	+ 9.6%	340	- 4.2%	- 12.1%
Total	3,694	+ 5.3%	- 7.8%	2.9	+ 5.3%	+ 2.3%	1,437	+ 0.1%	- 9.8%

Showings

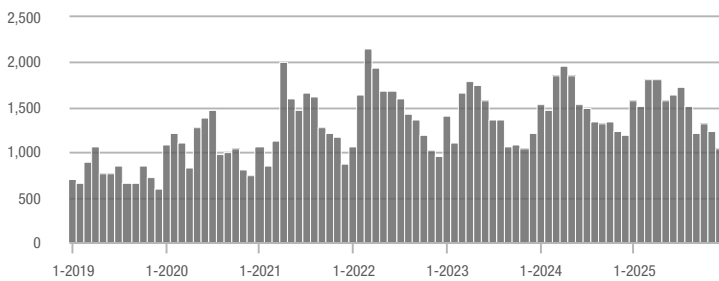
\$149,999 or Less



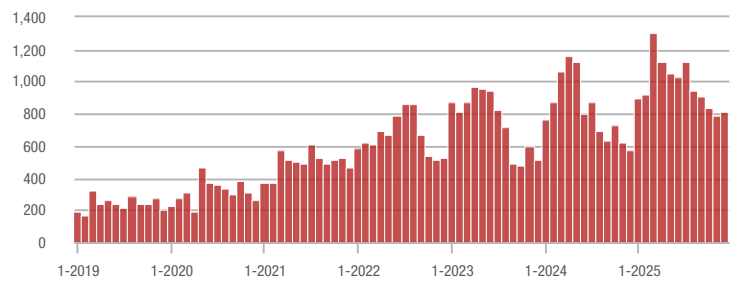
\$150,000 to \$249,999



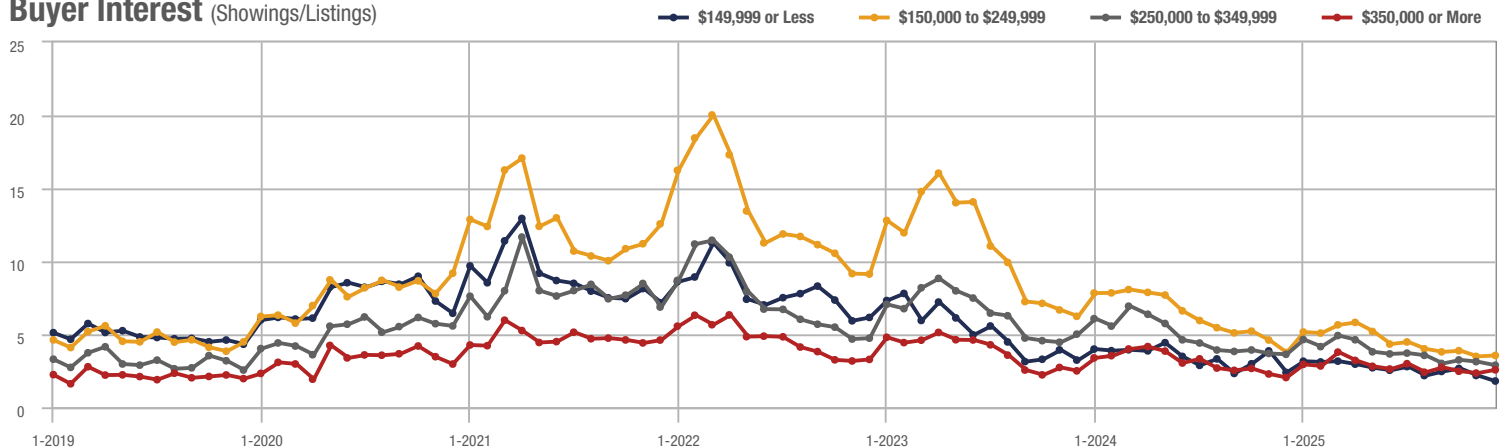
\$250,000 to \$349,999



\$350,000 or More



Buyer Interest (Showings/Listings)

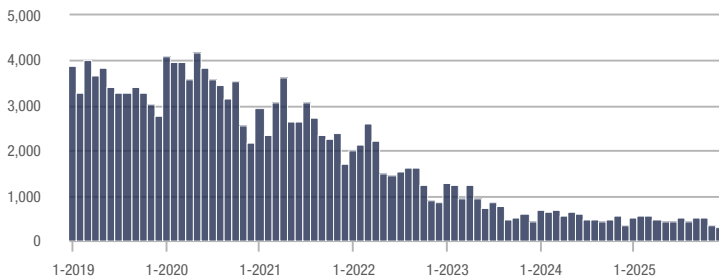


Fayetteville

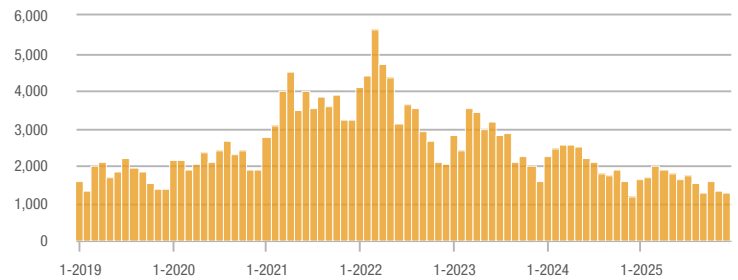
Price Range	Total Showings			Buyer Interest (Showings/Listings)			Managed Listings		
	December 2025	Year-Over-Year Change	Month-Over-Month Change	December 2025	Year-Over-Year Change	Month-Over-Month Change	December 2025	Year-Over-Year Change	Month-Over-Month Change
\$149,999 or Less	285	+ 7.9%	- 18.8%	1.8	- 25.0%	- 20.2%	203	- 5.6%	- 7.3%
\$150,000 to \$249,999	1,277	+ 7.9%	- 4.6%	3.6	0.0%	+ 3.2%	382	+ 5.2%	- 8.2%
\$250,000 to \$349,999	893	+ 15.1%	- 11.5%	3.0	- 11.8%	- 3.7%	323	+ 17.0%	- 11.7%
\$350,000 or More	658	+ 39.1%	+ 5.4%	2.6	+ 30.0%	+ 10.6%	261	- 13.9%	- 13.3%
Total	3,113	+ 12.9%	- 6.3%	3.0	+ 11.8%	+ 4.4%	1,169	+ 1.0%	- 10.2%

Showings

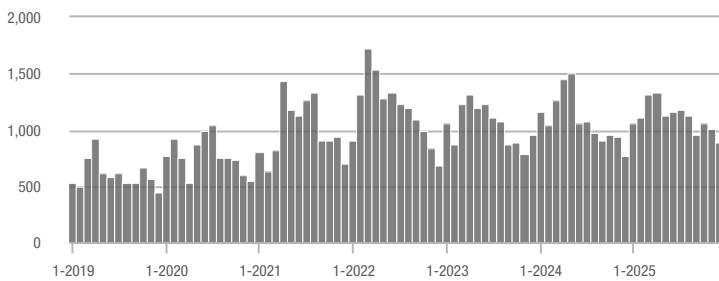
\$149,999 or Less



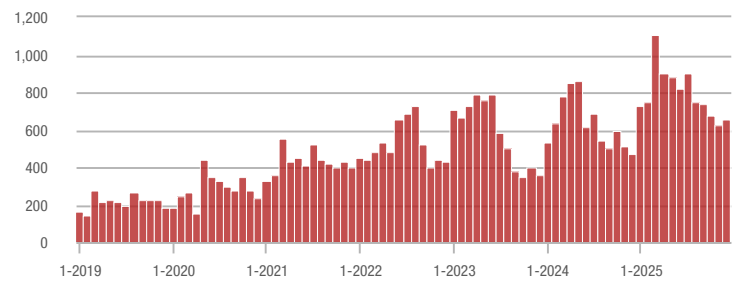
\$150,000 to \$249,999



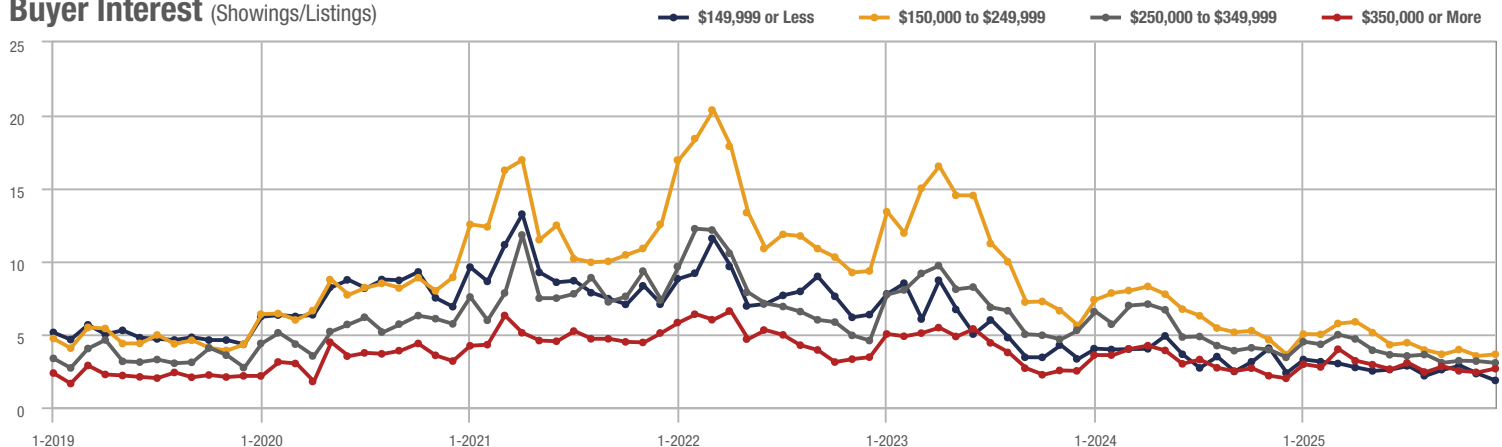
\$250,000 to \$349,999



\$350,000 or More



Buyer Interest (Showings/Listings)

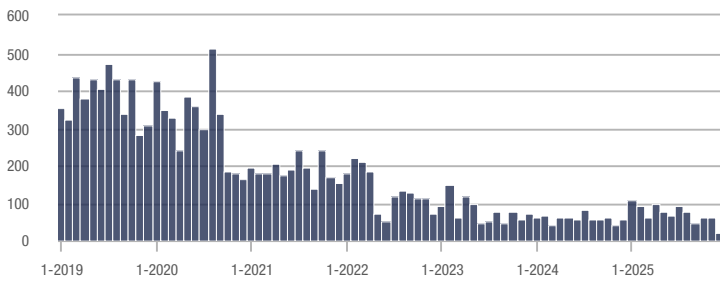


Harnett County

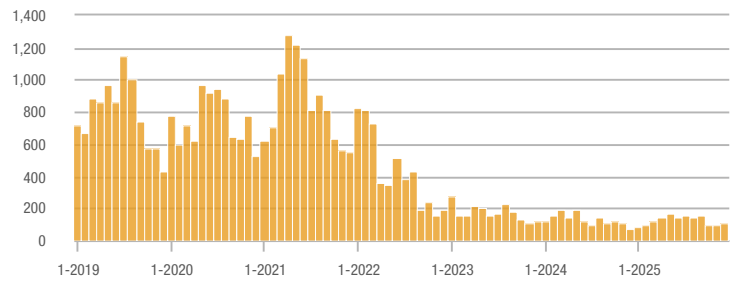
Price Range	Total Showings			Buyer Interest (Showings/Listings)			Managed Listings		
	December 2025	Year-Over-Year Change	Month-Over-Month Change	December 2025	Year-Over-Year Change	Month-Over-Month Change	December 2025	Year-Over-Year Change	Month-Over-Month Change
\$149,999 or Less	20	+ 55.6%	- 66.1%	0.4	- 75.0%	- 77.2%	33	- 45.0%	- 26.7%
\$150,000 to \$249,999	112	+ 55.6%	+ 19.1%	3.0	- 9.1%	+ 17.1%	50	+ 66.7%	0.0%
\$250,000 to \$349,999	249	- 18.1%	- 24.3%	2.3	- 8.0%	- 18.1%	146	- 9.9%	- 9.9%
\$350,000 or More	195	+ 25.8%	- 24.7%	2.2	0.0%	- 16.4%	121	+ 6.1%	- 16.0%
Total	576	- 1.5%	- 22.3%	2.2	+ 3.0%	- 10.9%	350	- 4.4%	- 12.7%

Showings

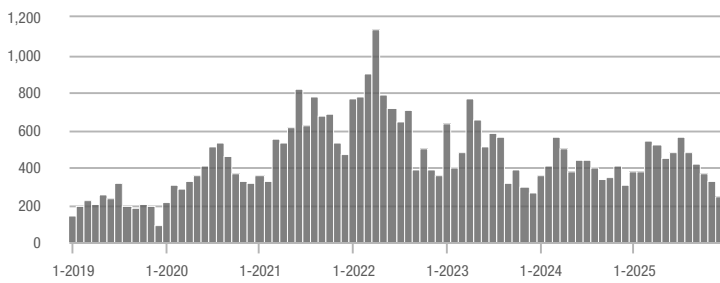
\$149,999 or Less



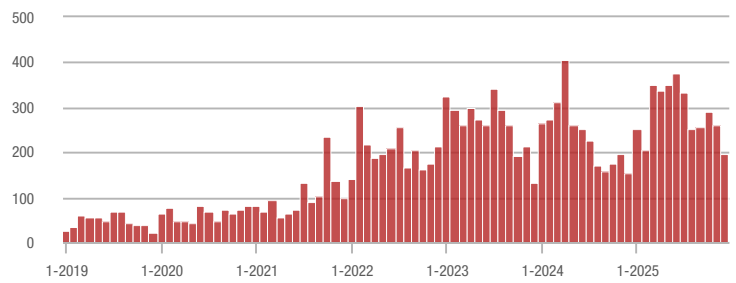
\$150,000 to \$249,999



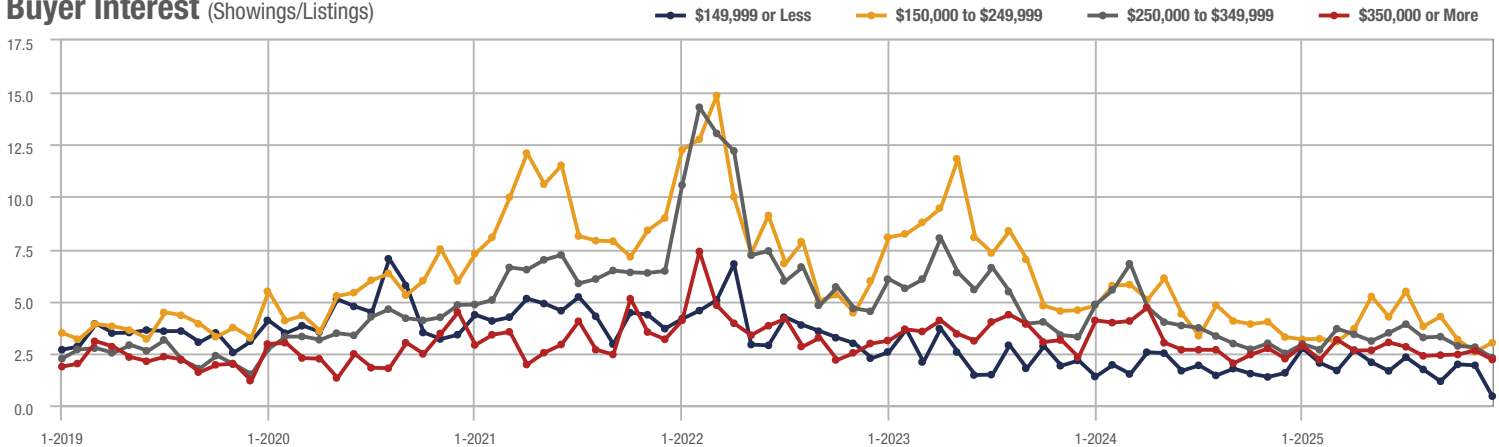
\$250,000 to \$349,999



\$350,000 or More



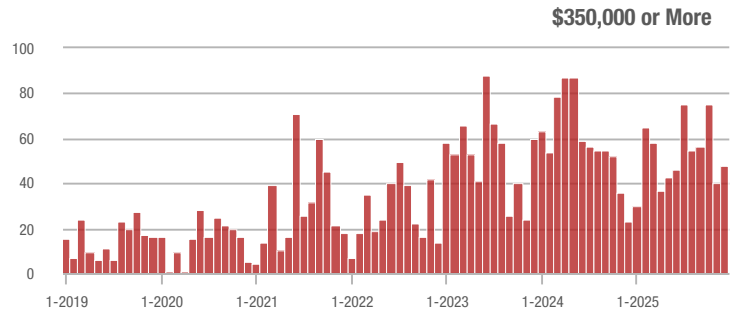
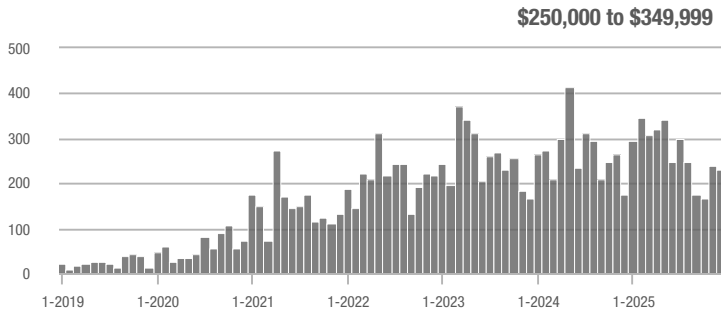
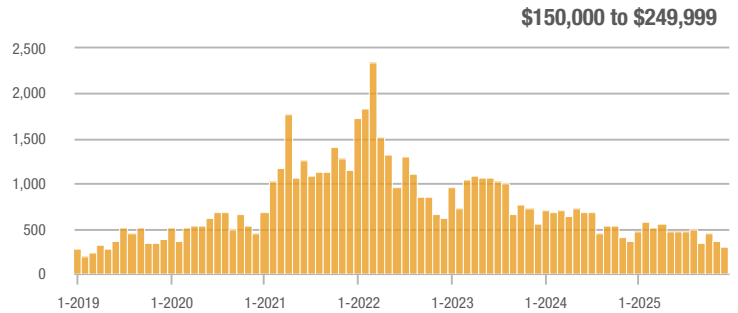
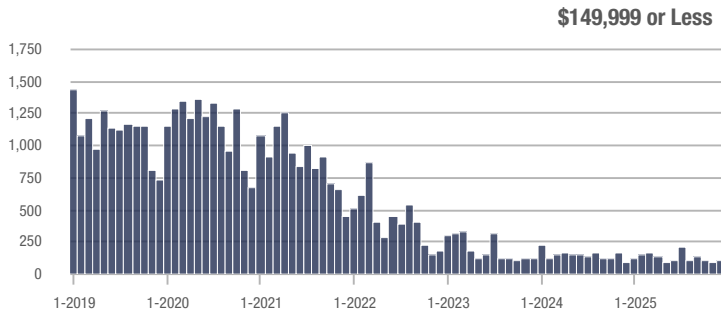
Buyer Interest (Showings/Listings)



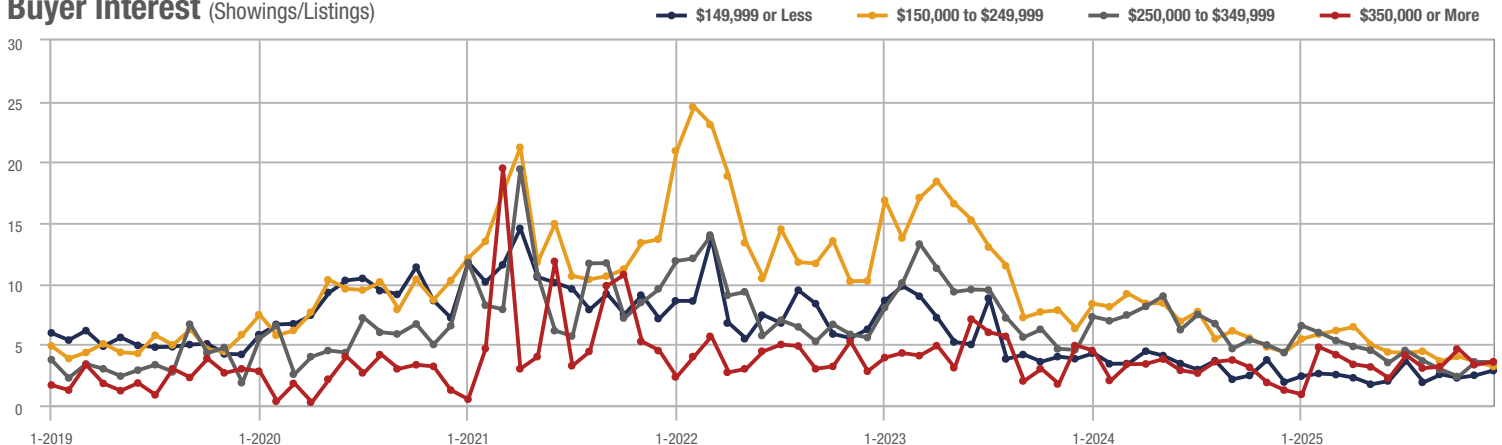
Zip Code 28314

Price Range	Total Showings			Buyer Interest (Showings/Listings)			Managed Listings		
	December 2025	Year-Over-Year Change	Month-Over-Month Change	December 2025	Year-Over-Year Change	Month-Over-Month Change	December 2025	Year-Over-Year Change	Month-Over-Month Change
\$149,999 or Less	107	- 17.4%	+ 25.9%	2.9	+ 52.6%	+ 15.6%	46	- 32.4%	0.0%
\$150,000 to \$249,999	300	- 17.4%	- 18.3%	3.2	- 25.6%	- 10.2%	99	+ 11.2%	- 9.2%
\$250,000 to \$349,999	232	+ 31.1%	- 2.9%	3.6	- 16.3%	- 0.8%	74	+ 60.9%	- 5.1%
\$350,000 or More	48	+ 108.7%	+ 20.0%	3.6	+ 176.9%	+ 7.5%	14	- 17.6%	0.0%
Total	687	+ 5.0%	- 6.0%	3.3	- 0.8%	- 0.4%	233	+ 5.9%	- 5.7%

Showings



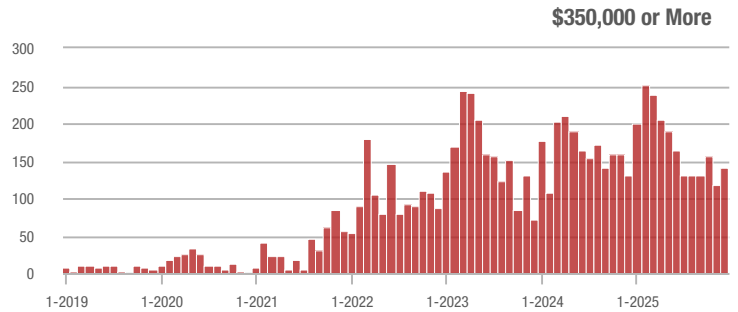
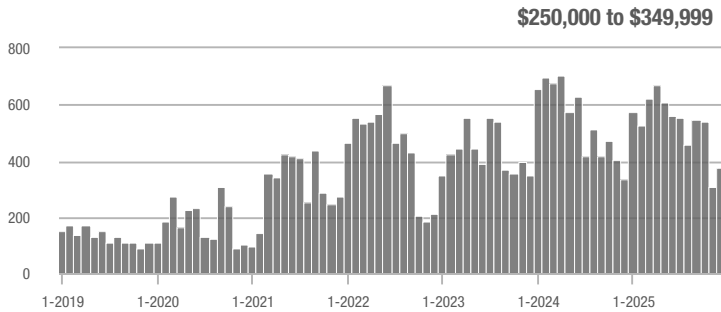
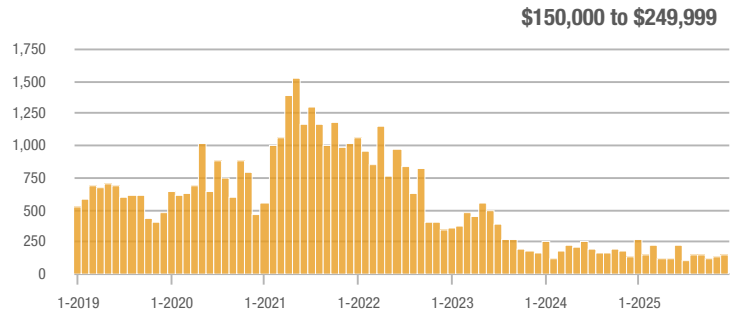
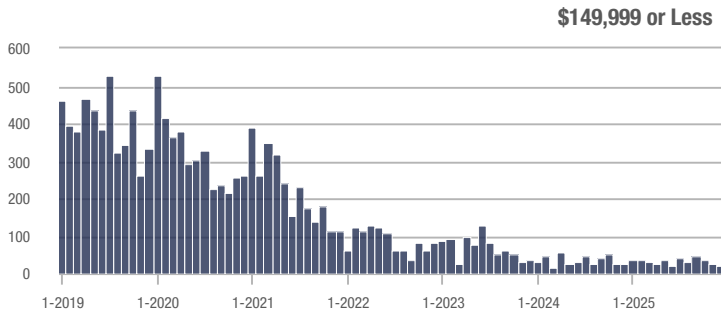
Buyer Interest (Showings/Listings)



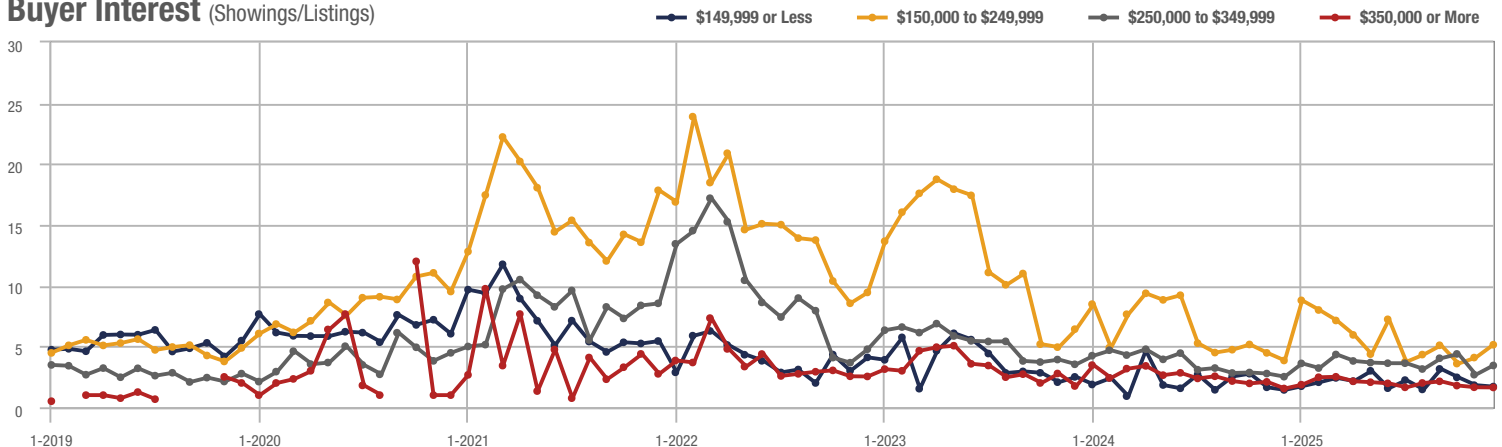
Hoke County

Price Range	Total Showings			Buyer Interest (Showings/Listings)			Managed Listings		
	December 2025	Year-Over-Year Change	Month-Over-Month Change	December 2025	Year-Over-Year Change	Month-Over-Month Change	December 2025	Year-Over-Year Change	Month-Over-Month Change
\$149,999 or Less	20	+ 11.5%	- 16.7%	1.7	+ 21.4%	- 6.5%	22	- 40.5%	- 12.0%
\$150,000 to \$249,999	146	+ 11.5%	+ 4.3%	5.1	+ 34.2%	+ 25.8%	31	- 27.9%	- 16.2%
\$250,000 to \$349,999	376	+ 12.2%	+ 22.1%	3.4	+ 36.0%	+ 28.2%	147	- 21.4%	- 6.4%
\$350,000 or More	140	+ 6.9%	+ 18.6%	1.6	+ 6.7%	- 0.9%	91	- 25.4%	- 7.1%
Total	682	+ 9.8%	+ 15.6%	3.1	+ 46.8%	+ 25.9%	291	- 25.2%	- 8.2%

Showings



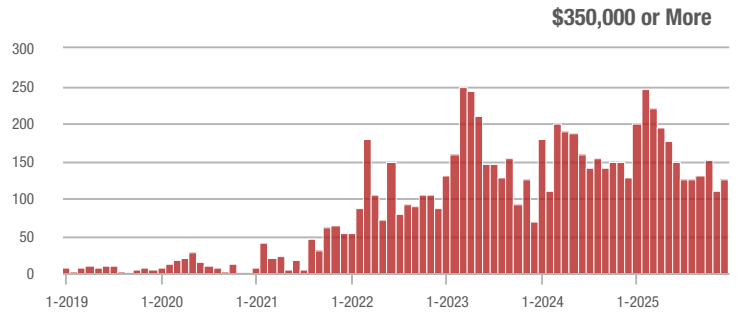
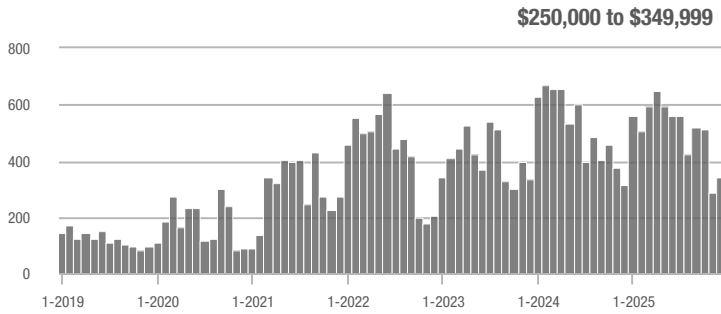
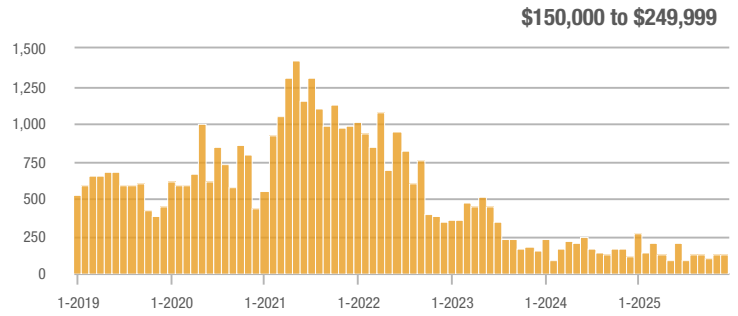
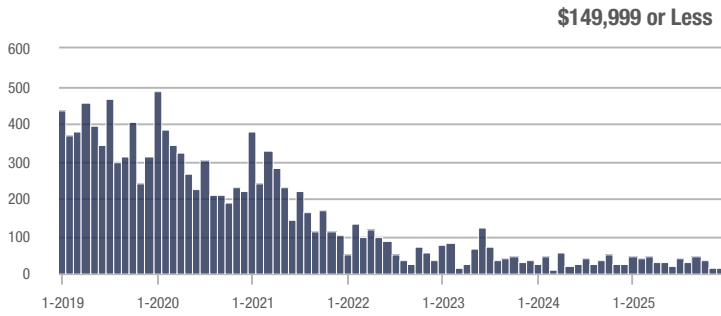
Buyer Interest (Showings/Listings)



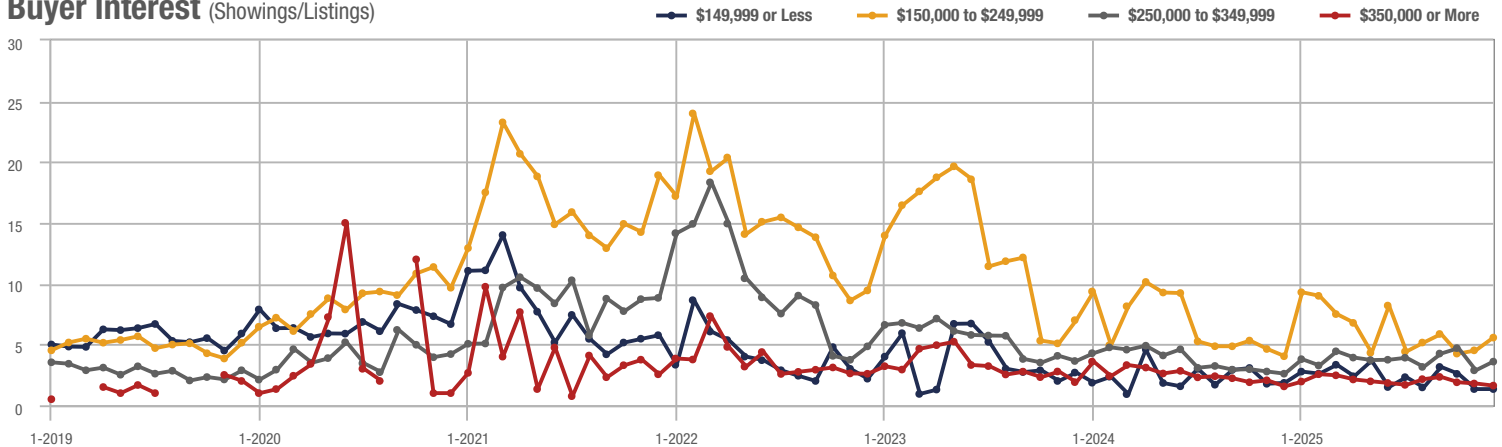
Raeford

Price Range	Total Showings			Buyer Interest (Showings/Listings)			Managed Listings		
	December 2025	Year-Over-Year Change	Month-Over-Month Change	December 2025	Year-Over-Year Change	Month-Over-Month Change	December 2025	Year-Over-Year Change	Month-Over-Month Change
\$149,999 or Less	13	+ 8.3%	- 13.3%	1.3	- 27.8%	0.0%	16	- 50.0%	- 11.1%
\$150,000 to \$249,999	130	+ 8.3%	+ 5.7%	5.6	+ 40.0%	+ 23.2%	26	- 27.8%	- 13.3%
\$250,000 to \$349,999	341	+ 8.6%	+ 18.4%	3.6	+ 38.5%	+ 24.8%	124	- 28.3%	- 8.1%
\$350,000 or More	126	- 0.8%	+ 15.6%	1.6	0.0%	- 9.6%	81	- 32.5%	- 5.8%
Total	610	+ 3.7%	+ 14.0%	3.2	+ 51.6%	+ 24.2%	247	- 31.6%	- 8.2%

Showings



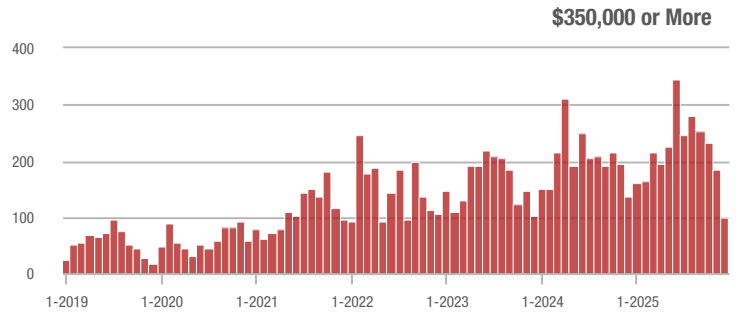
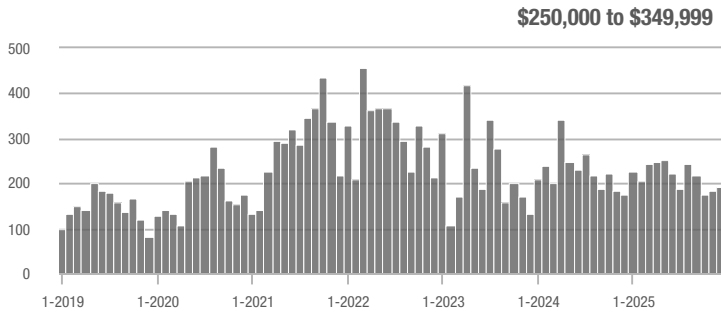
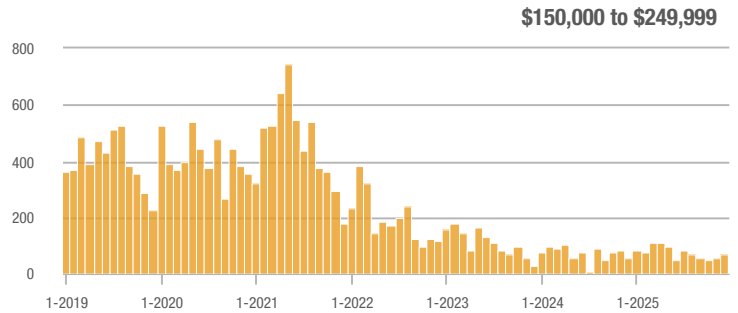
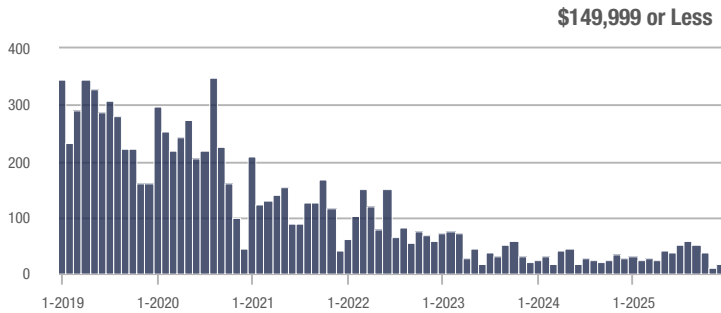
Buyer Interest (Showings/Listings)



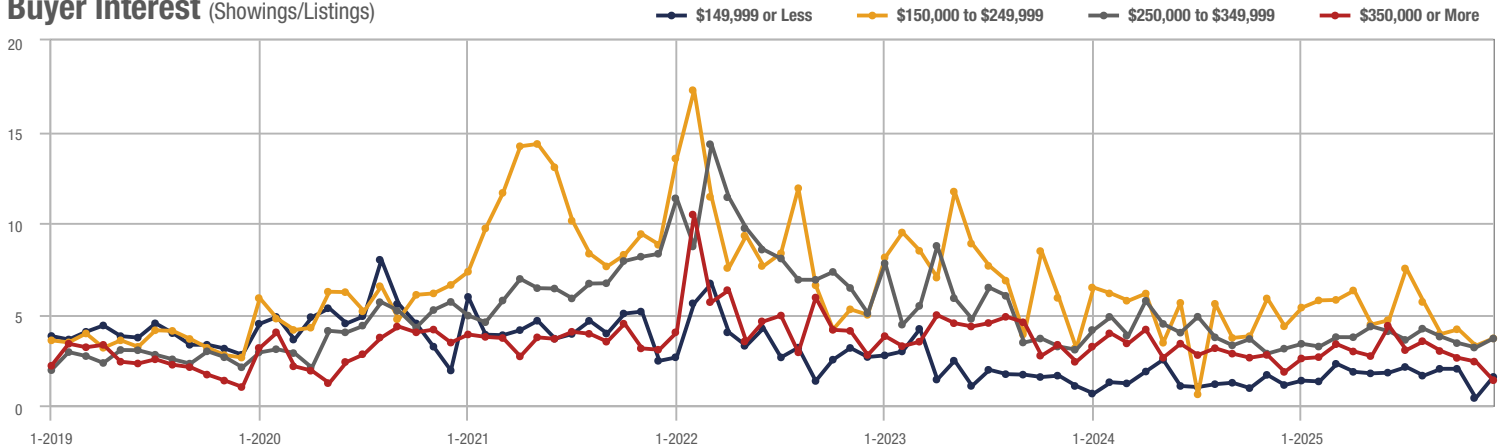
Sanford

Price Range	Total Showings			Buyer Interest (Showings/Listings)			Managed Listings		
	December 2025	Year-Over-Year Change	Month-Over-Month Change	December 2025	Year-Over-Year Change	Month-Over-Month Change	December 2025	Year-Over-Year Change	Month-Over-Month Change
\$149,999 or Less	17	+ 29.6%	+ 54.5%	1.6	+ 45.5%	+ 288.9%	24	- 40.0%	- 20.0%
\$150,000 to \$249,999	70	+ 29.6%	+ 34.6%	3.7	- 14.0%	+ 12.2%	20	+ 25.0%	+ 11.1%
\$250,000 to \$349,999	193	+ 9.0%	+ 4.3%	3.7	+ 19.4%	+ 15.6%	62	- 23.5%	- 13.9%
\$350,000 or More	99	- 28.3%	- 46.8%	1.4	- 22.2%	- 42.6%	82	- 7.9%	- 12.8%
Total	379	- 4.1%	- 12.7%	2.5	+ 15.3%	- 0.6%	188	- 16.8%	- 12.1%

Showings



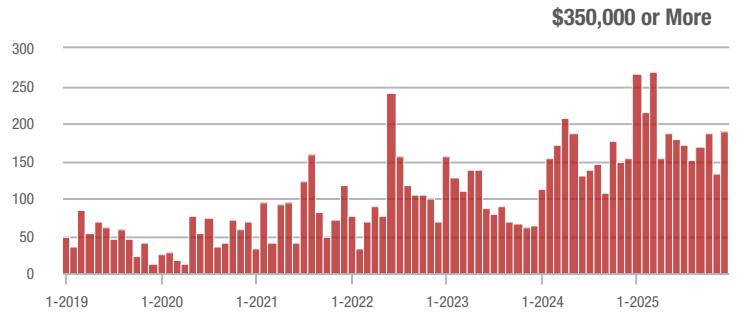
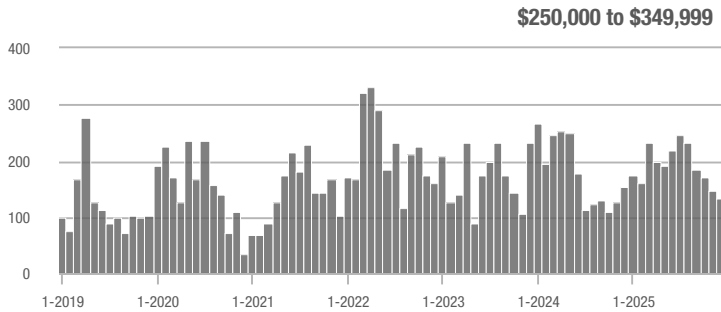
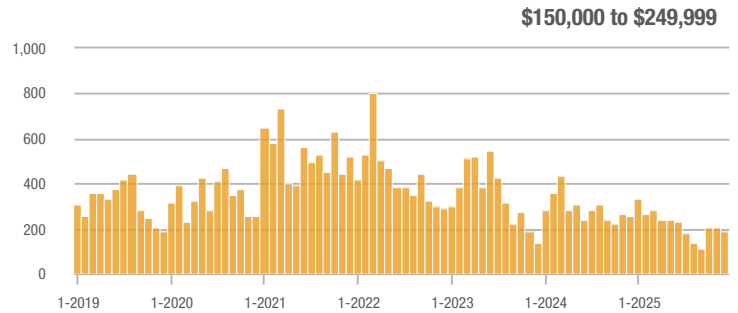
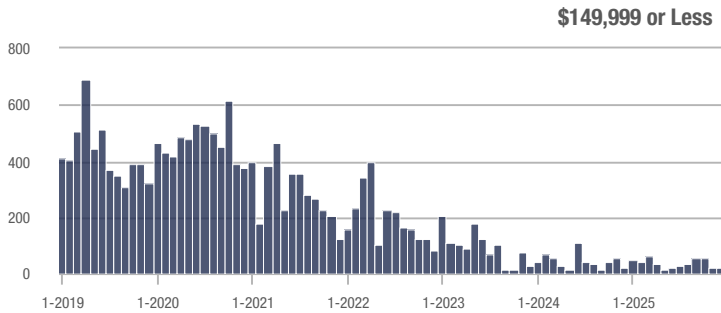
Buyer Interest (Showings/Listings)



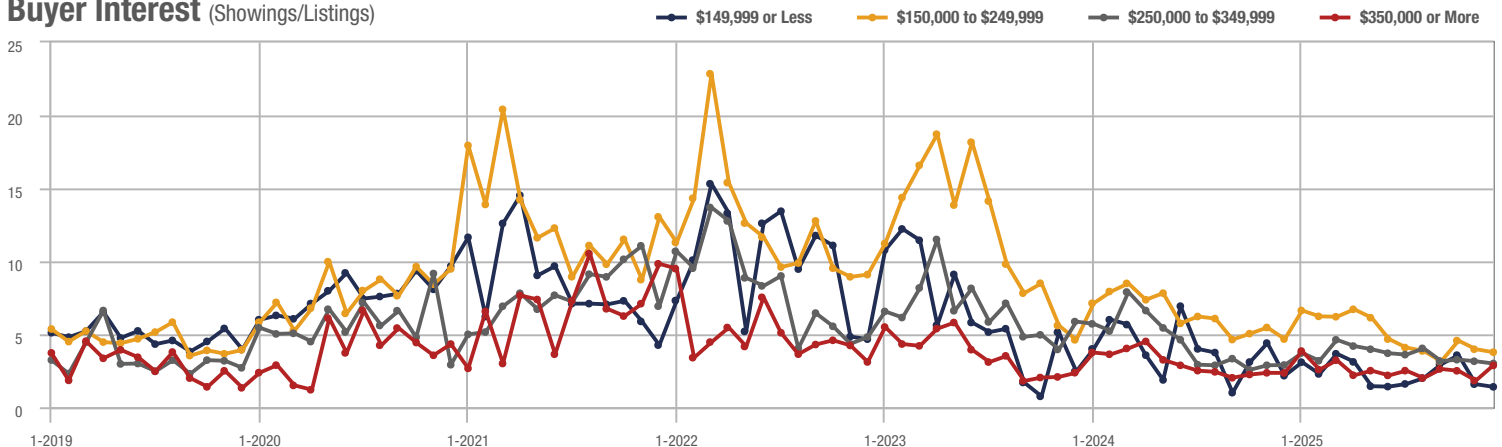
Zip Code 28311

Price Range	Total Showings			Buyer Interest (Showings/Listings)			Managed Listings		
	December 2025	Year-Over-Year Change	Month-Over-Month Change	December 2025	Year-Over-Year Change	Month-Over-Month Change	December 2025	Year-Over-Year Change	Month-Over-Month Change
\$149,999 or Less	21	- 24.8%	- 8.7%	1.4	- 36.4%	- 11.6%	16	0.0%	- 15.8%
\$150,000 to \$249,999	191	- 24.8%	- 5.0%	3.8	- 19.1%	- 5.1%	55	- 6.8%	- 1.8%
\$250,000 to \$349,999	134	- 13.5%	- 8.8%	3.0	+ 3.4%	- 4.9%	52	- 25.7%	- 8.8%
\$350,000 or More	191	+ 23.2%	+ 43.6%	2.9	+ 20.8%	+ 56.7%	72	- 19.1%	- 15.3%
Total	537	- 7.7%	+ 6.5%	3.1	+ 10.7%	+ 18.6%	195	- 16.7%	- 10.1%

Showings



Buyer Interest (Showings/Listings)

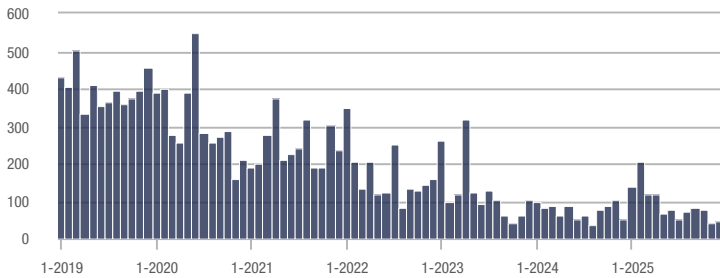


Zip Code 28306

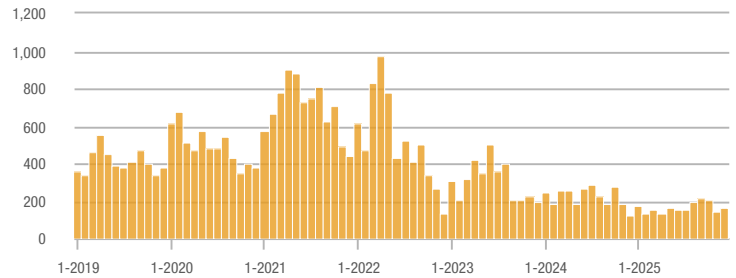
Price Range	Total Showings			Buyer Interest (Showings/Listings)			Managed Listings		
	December 2025	Year-Over-Year Change	Month-Over-Month Change	December 2025	Year-Over-Year Change	Month-Over-Month Change	December 2025	Year-Over-Year Change	Month-Over-Month Change
\$149,999 or Less	44	+ 34.5%	+ 2.3%	2.0	- 16.7%	+ 21.1%	30	- 16.7%	- 14.3%
\$150,000 to \$249,999	160	+ 34.5%	+ 11.1%	4.4	+ 41.9%	+ 25.6%	39	- 4.9%	- 9.3%
\$250,000 to \$349,999	243	+ 38.1%	- 17.9%	3.9	- 20.4%	- 3.5%	71	+ 82.1%	- 14.5%
\$350,000 or More	174	+ 62.6%	- 7.4%	2.6	+ 44.4%	+ 3.5%	67	- 17.3%	- 15.2%
Total	621	+ 36.8%	- 7.5%	3.4	+ 30.2%	+ 7.3%	207	+ 5.1%	- 13.8%

Showings

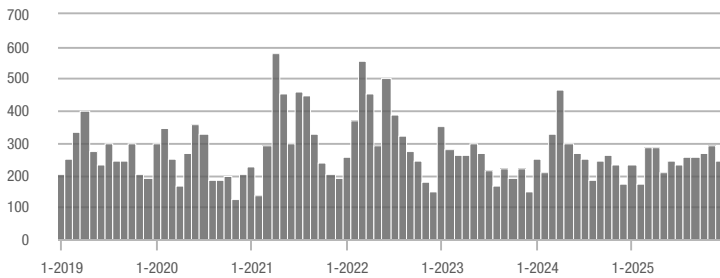
\$149,999 or Less



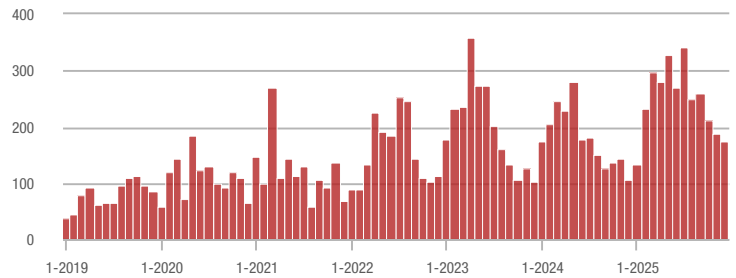
\$150,000 to \$249,999



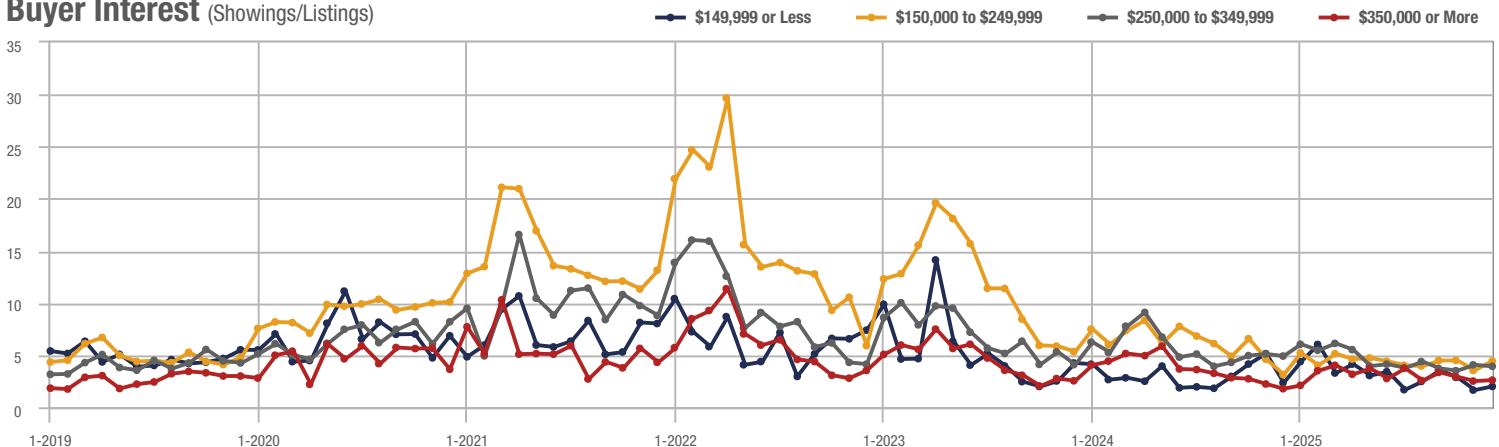
\$250,000 to \$349,999



\$350,000 or More



Buyer Interest (Showings/Listings)

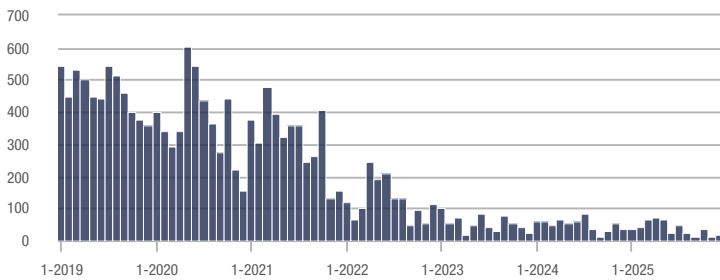


Hope Mills

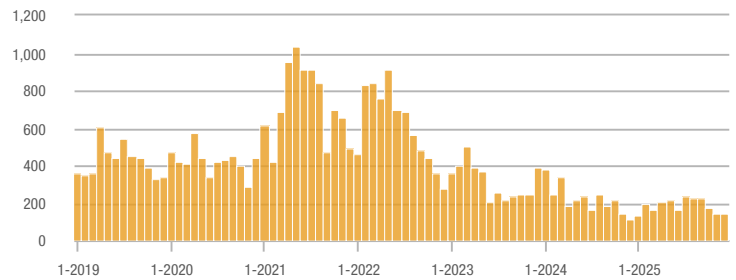
Price Range	Total Showings			Buyer Interest (Showings/Listings)			Managed Listings		
	December 2025	Year-Over-Year Change	Month-Over-Month Change	December 2025	Year-Over-Year Change	Month-Over-Month Change	December 2025	Year-Over-Year Change	Month-Over-Month Change
\$149,999 or Less	20	+ 26.1%	+ 42.9%	1.5	- 44.4%	+ 39.3%	14	- 17.6%	- 6.7%
\$150,000 to \$249,999	140	+ 26.1%	- 1.4%	3.0	- 37.5%	- 0.7%	50	+ 108.3%	- 2.0%
\$250,000 to \$349,999	124	- 57.8%	- 30.7%	2.4	- 42.9%	- 22.3%	62	- 26.2%	- 7.5%
\$350,000 or More	93	+ 22.4%	- 3.1%	2.4	0.0%	+ 11.2%	45	+ 25.0%	- 13.5%
Total	377	- 27.2%	- 12.5%	2.5	- 31.5%	- 5.4%	171	+ 6.2%	- 7.6%

Showings

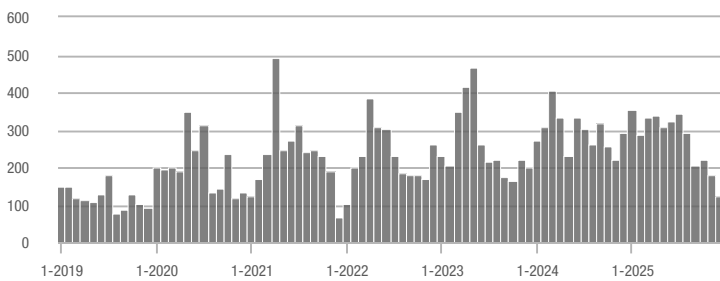
\$149,999 or Less



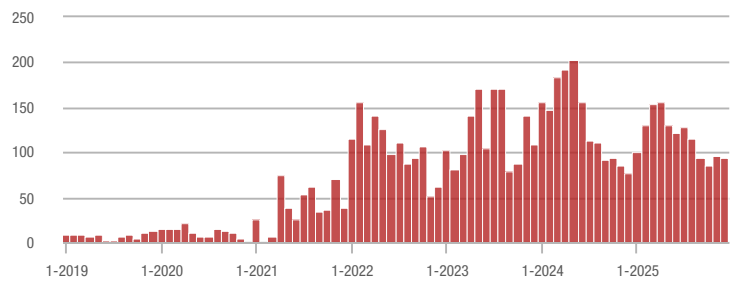
\$150,000 to \$249,999



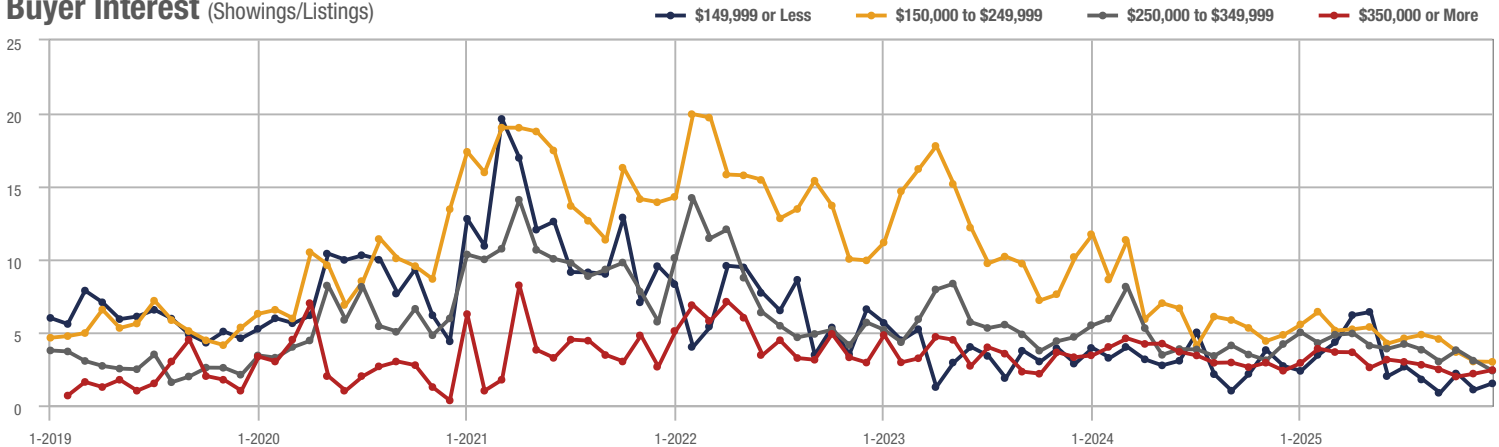
\$250,000 to \$349,999



\$350,000 or More



Buyer Interest (Showings/Listings)

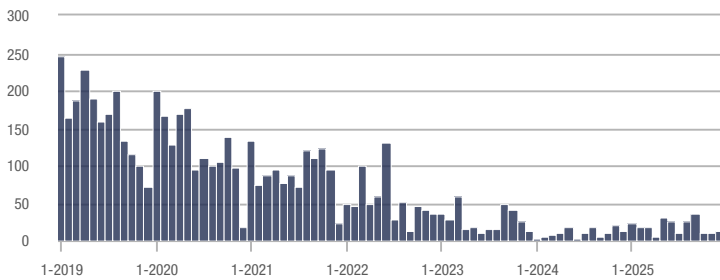


Lee County

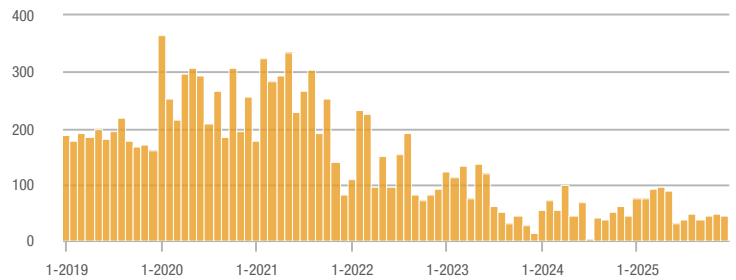
Price Range	Total Showings			Buyer Interest (Showings/Listings)			Managed Listings		
	December 2025	Year-Over-Year Change	Month-Over-Month Change	December 2025	Year-Over-Year Change	Month-Over-Month Change	December 2025	Year-Over-Year Change	Month-Over-Month Change
\$149,999 or Less	14	0.0%	+ 40.0%	1.8	+ 80.0%	+ 156.7%	20	- 33.3%	- 20.0%
\$150,000 to \$249,999	45	0.0%	- 6.3%	3.3	- 8.3%	- 8.5%	14	- 12.5%	0.0%
\$250,000 to \$349,999	146	+ 39.0%	+ 28.1%	3.6	+ 5.9%	+ 41.4%	45	- 8.2%	- 11.8%
\$350,000 or More	43	- 60.2%	- 56.1%	0.9	- 50.0%	- 51.6%	54	- 16.9%	- 11.5%
Total	248	- 8.1%	- 8.1%	2.3	+ 10.5%	+ 4.3%	133	- 16.9%	- 11.9%

Showings

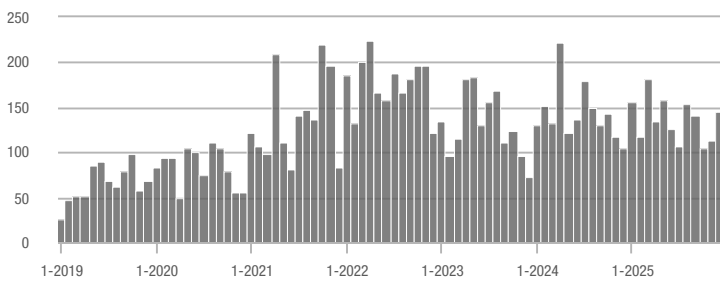
\$149,999 or Less



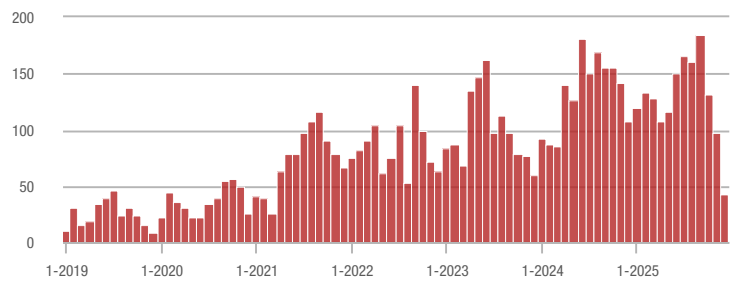
\$150,000 to \$249,999



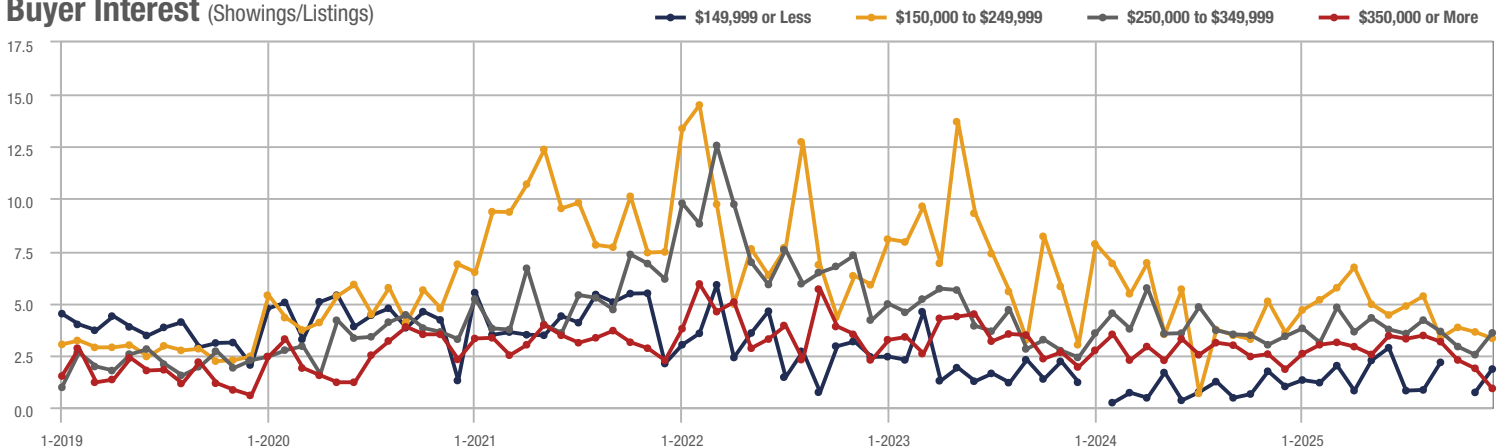
\$250,000 to \$349,999



\$350,000 or More



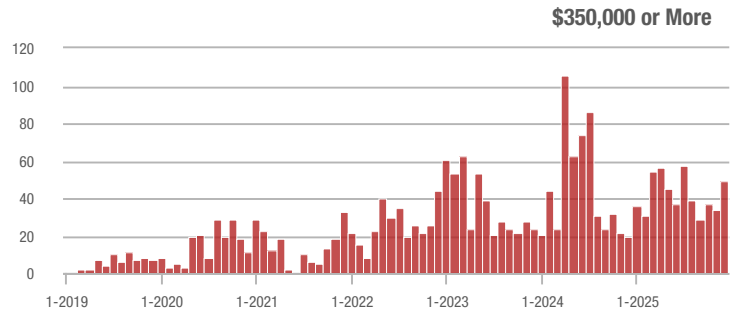
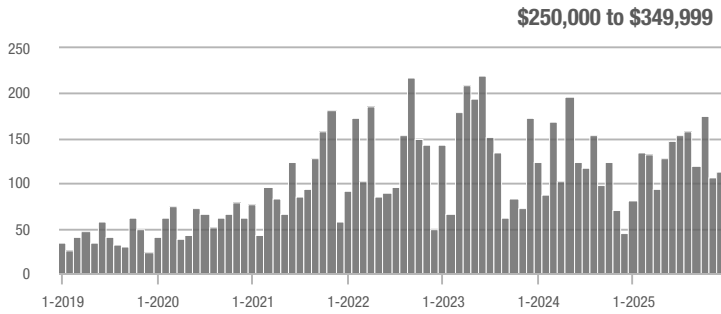
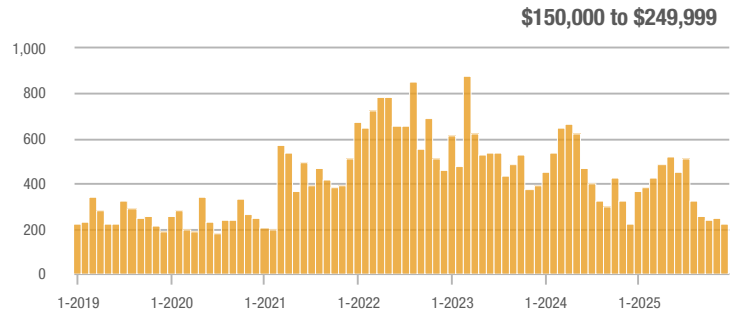
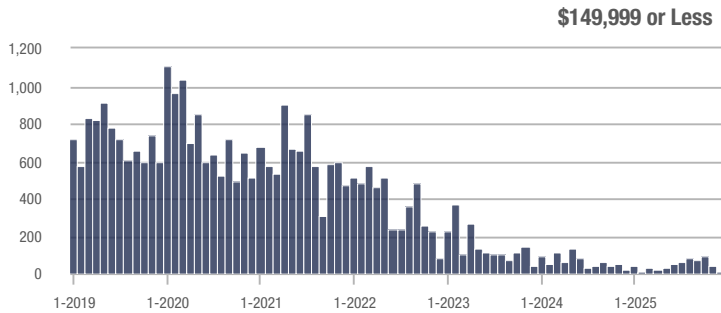
Buyer Interest (Showings/Listings)



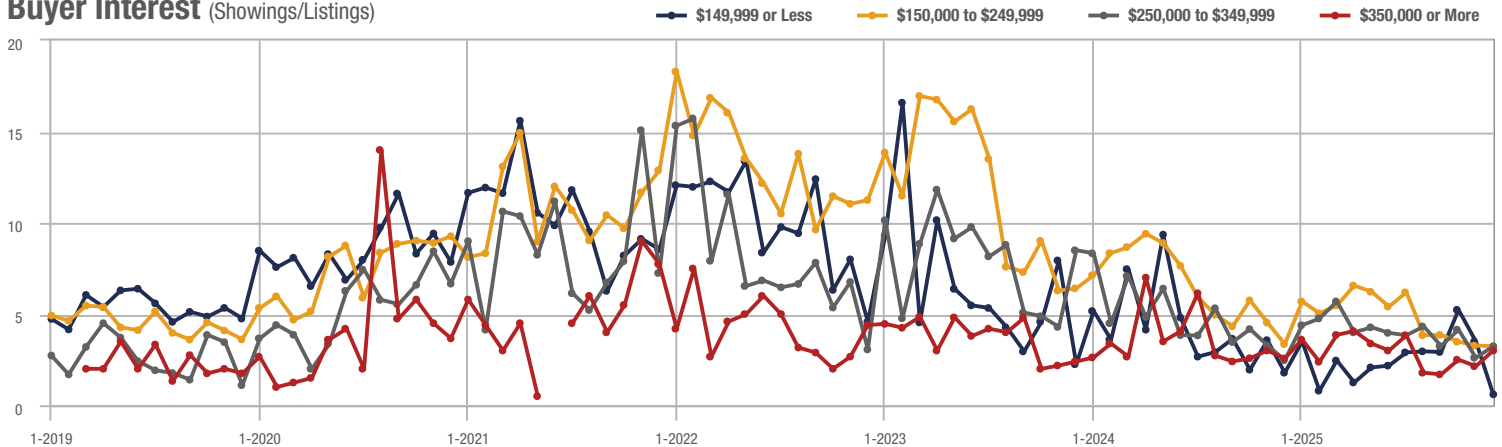
Zip Code 28304

Price Range	Total Showings			Buyer Interest (Showings/Listings)			Managed Listings		
	December 2025	Year-Over-Year Change	Month-Over-Month Change	December 2025	Year-Over-Year Change	Month-Over-Month Change	December 2025	Year-Over-Year Change	Month-Over-Month Change
\$149,999 or Less	12	+ 2.7%	- 73.3%	0.6	- 66.7%	- 82.9%	25	+ 25.0%	+ 8.7%
\$150,000 to \$249,999	226	+ 2.7%	- 7.8%	3.2	- 5.9%	- 0.7%	74	+ 1.4%	- 6.3%
\$250,000 to \$349,999	113	+ 156.8%	+ 6.6%	3.2	+ 28.0%	+ 24.1%	35	+ 59.1%	- 22.2%
\$350,000 or More	49	+ 145.0%	+ 44.1%	3.0	+ 15.4%	+ 40.0%	20	+ 66.7%	- 13.0%
Total	400	+ 29.4%	- 7.0%	2.9	+ 6.8%	+ 2.7%	154	+ 21.3%	- 9.4%

Showings



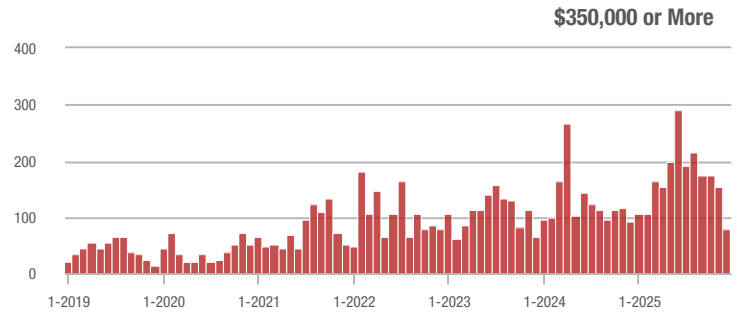
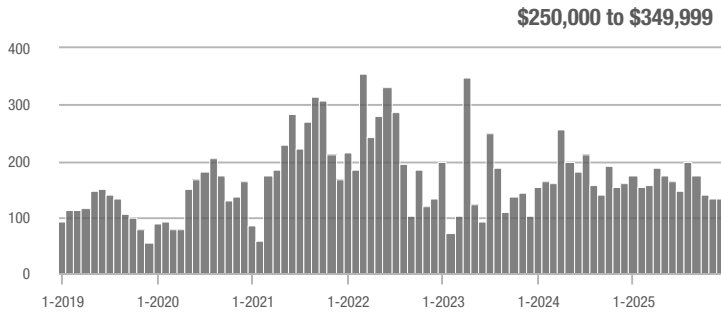
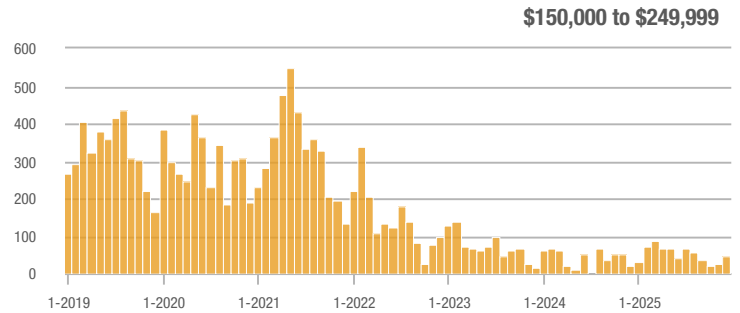
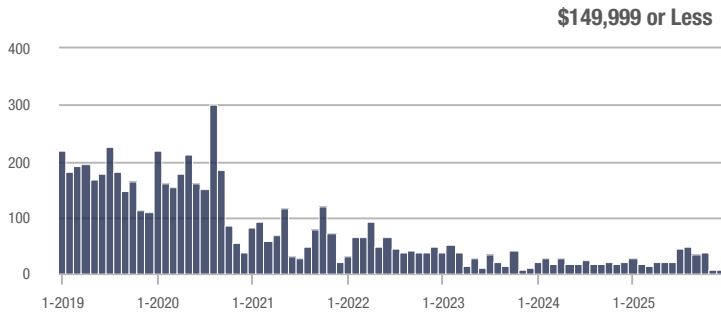
Buyer Interest (Showings/Listings)



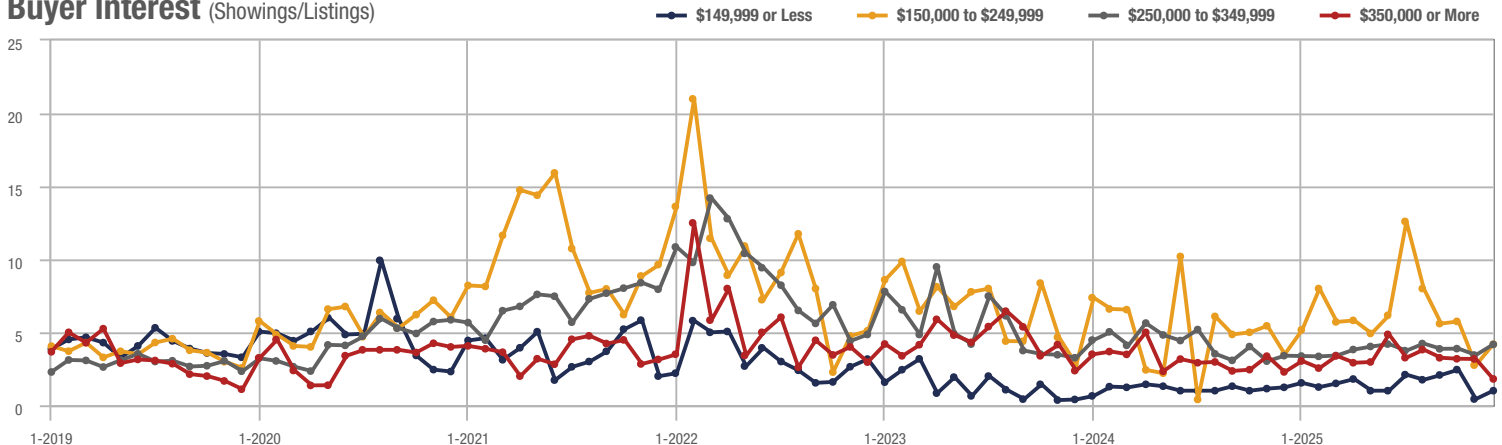
Zip Code 27332

Price Range	Total Showings			Buyer Interest (Showings/Listings)			Managed Listings		
	December 2025	Year-Over-Year Change	Month-Over-Month Change	December 2025	Year-Over-Year Change	Month-Over-Month Change	December 2025	Year-Over-Year Change	Month-Over-Month Change
\$149,999 or Less	8	+ 118.2%	0.0%	1.0	- 16.7%	+ 133.3%	16	- 42.9%	- 27.3%
\$150,000 to \$249,999	48	+ 118.2%	+ 100.0%	4.2	+ 20.0%	+ 52.1%	12	+ 50.0%	+ 20.0%
\$250,000 to \$349,999	135	- 15.1%	+ 0.7%	4.2	+ 23.5%	+ 21.1%	39	- 44.3%	- 20.4%
\$350,000 or More	78	- 16.1%	- 49.0%	1.8	- 21.7%	- 43.1%	48	- 12.7%	- 14.3%
Total	269	- 9.1%	- 15.7%	2.8	+ 27.2%	+ 0.5%	115	- 28.6%	- 16.1%

Showings



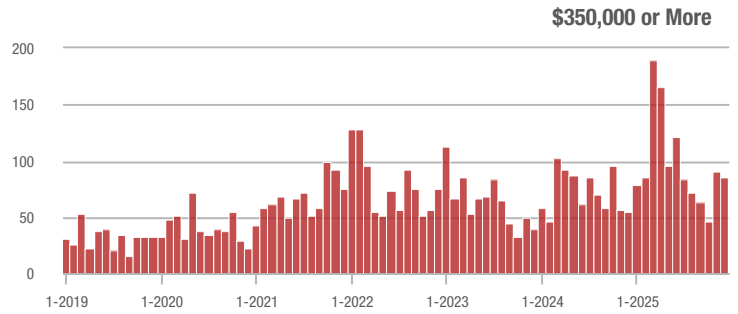
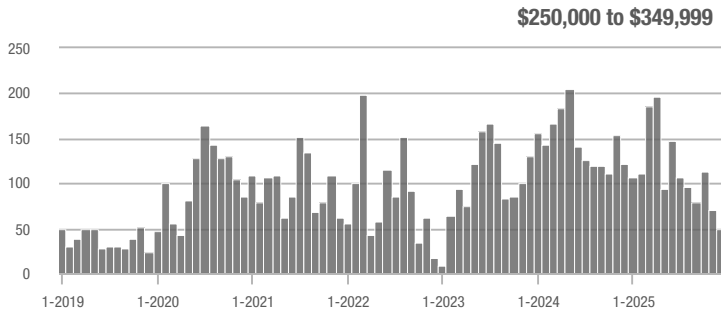
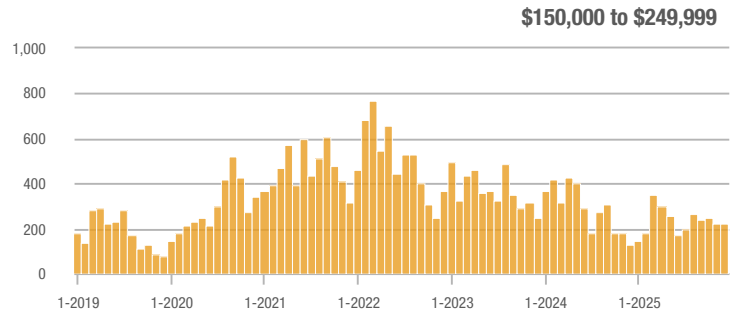
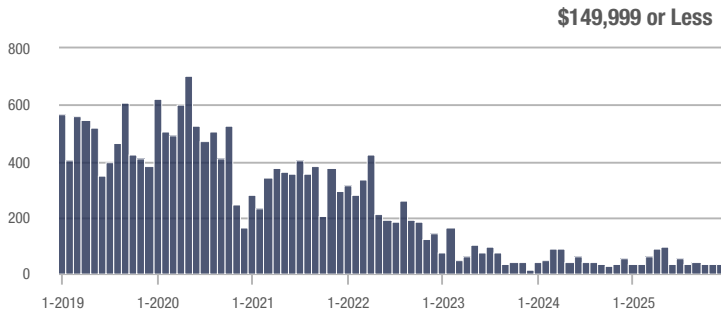
Buyer Interest (Showings/Listings)



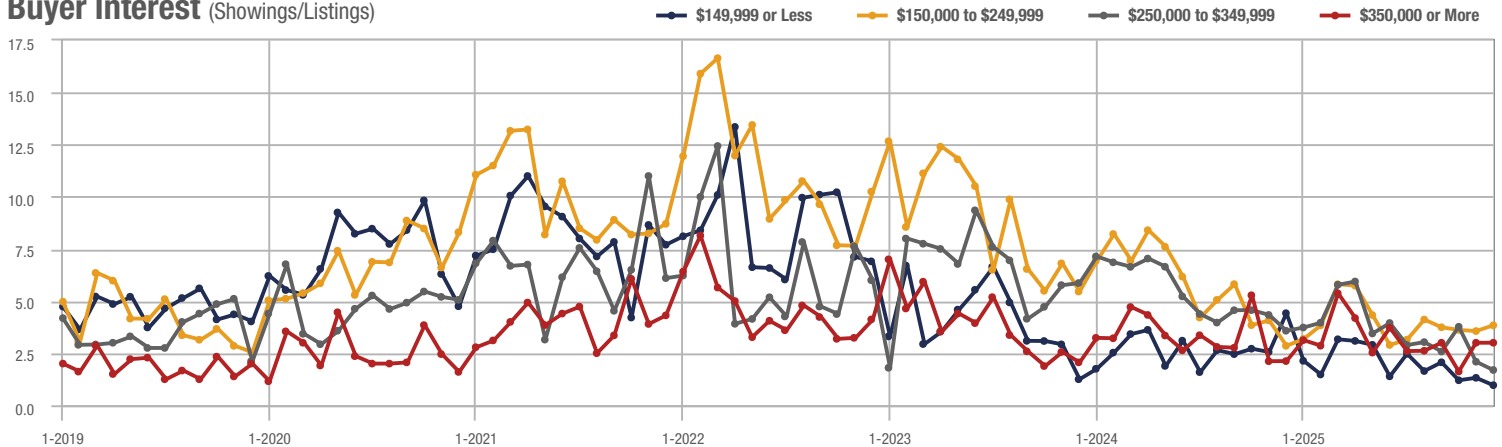
Zip Code 28303

Price Range	Total Showings			Buyer Interest (Showings/Listings)			Managed Listings		
	December 2025	Year-Over-Year Change	Month-Over-Month Change	December 2025	Year-Over-Year Change	Month-Over-Month Change	December 2025	Year-Over-Year Change	Month-Over-Month Change
\$149,999 or Less	32	+ 74.2%	+ 3.2%	1.0	- 77.3%	- 26.8%	37	+ 54.2%	+ 8.8%
\$150,000 to \$249,999	223	+ 74.2%	+ 2.3%	3.8	+ 31.0%	+ 7.8%	66	+ 24.5%	- 7.0%
\$250,000 to \$349,999	49	- 59.5%	- 31.0%	1.7	- 52.8%	- 19.1%	30	- 18.9%	- 21.1%
\$350,000 or More	86	+ 59.3%	- 4.4%	3.0	+ 42.9%	0.0%	33	+ 6.5%	- 10.8%
Total	390	+ 8.3%	- 4.9%	2.7	- 5.4%	+ 3.1%	166	+ 14.5%	- 7.8%

Showings



Buyer Interest (Showings/Listings)

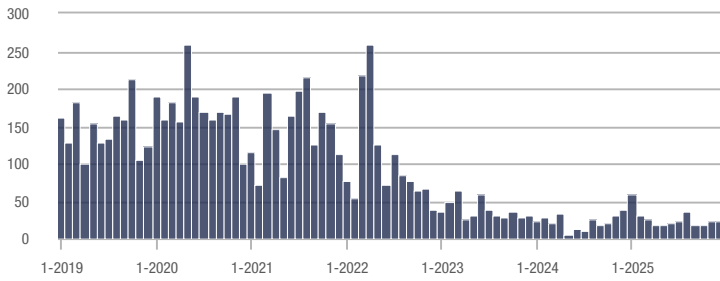


Spring Lake

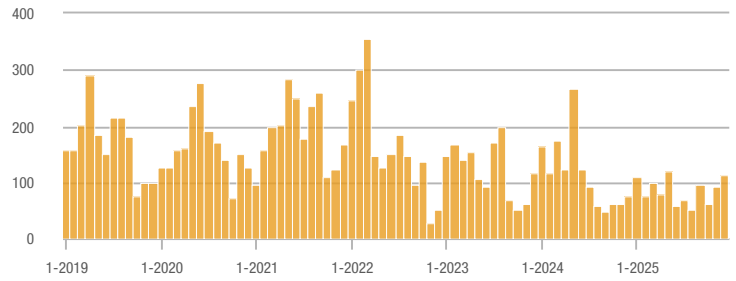
Price Range	Total Showings			Buyer Interest (Showings/Listings)			Managed Listings		
	December 2025	Year-Over-Year Change	Month-Over-Month Change	December 2025	Year-Over-Year Change	Month-Over-Month Change	December 2025	Year-Over-Year Change	Month-Over-Month Change
\$149,999 or Less	22	+ 52.7%	- 4.3%	2.8	+ 7.7%	+ 70.0%	14	- 44.0%	- 30.0%
\$150,000 to \$249,999	113	+ 52.7%	+ 20.2%	5.2	- 14.8%	+ 35.7%	26	+ 62.5%	- 7.1%
\$250,000 to \$349,999	60	- 7.7%	+ 15.4%	1.9	0.0%	+ 15.9%	38	- 17.4%	+ 2.7%
\$350,000 or More	34	- 38.2%	- 29.2%	1.1	- 47.6%	- 17.6%	34	+ 3.0%	- 17.1%
Total	229	- 1.3%	+ 5.5%	2.6	+ 5.8%	+ 18.7%	112	- 6.7%	- 11.1%

Showings

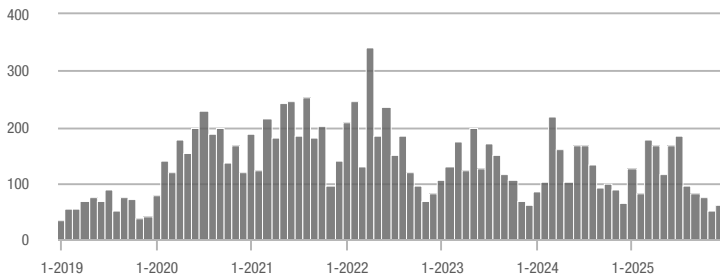
\$149,999 or Less



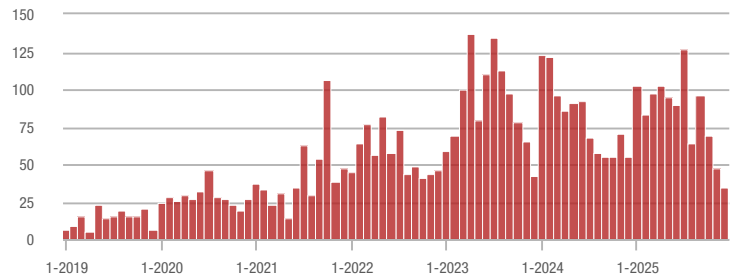
\$150,000 to \$249,999



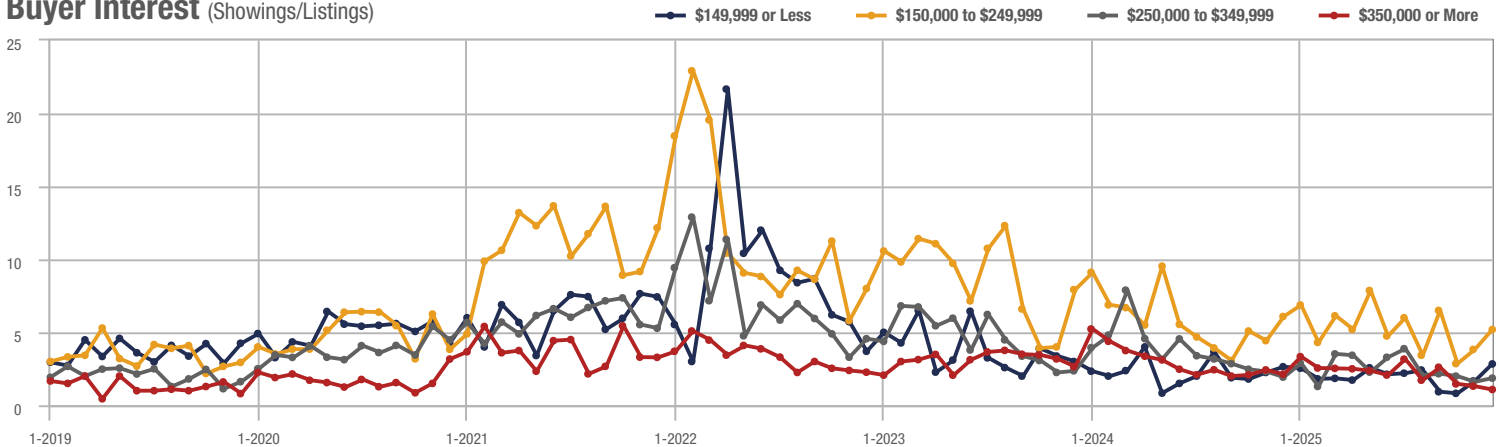
\$250,000 to \$349,999



\$350,000 or More



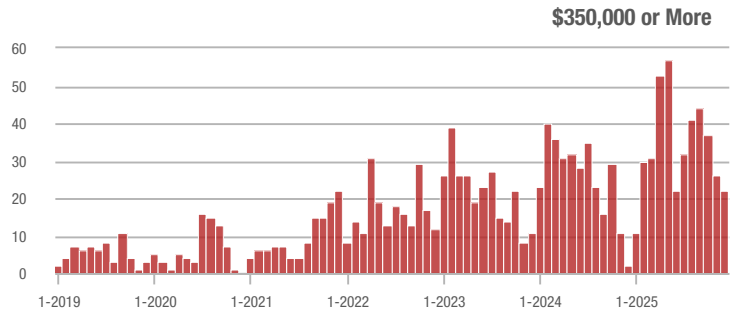
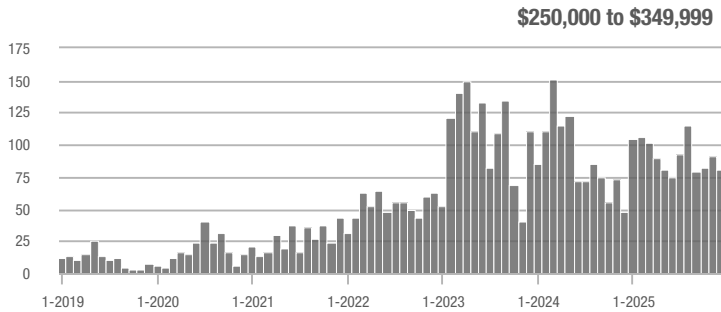
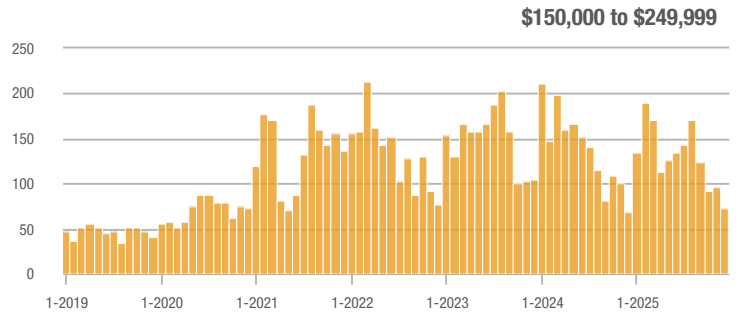
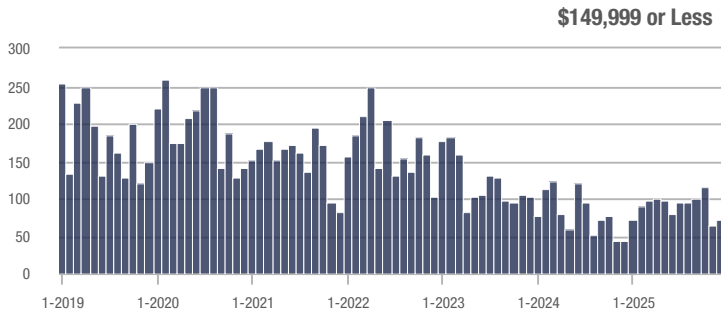
Buyer Interest (Showings/Listings)



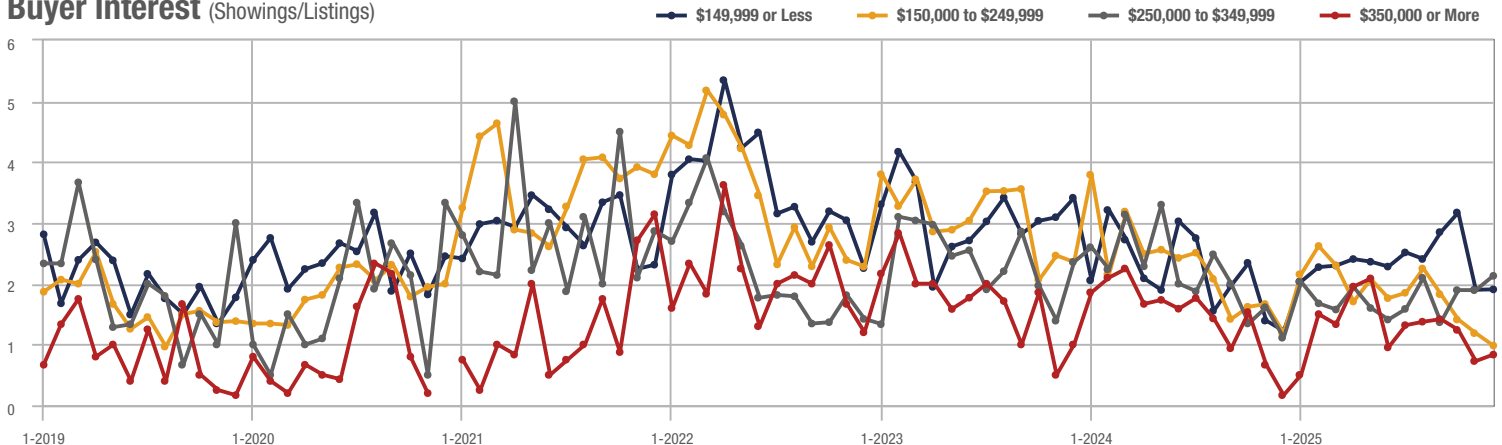
Robeson County

Price Range	Total Showings			Buyer Interest (Showings/Listings)			Managed Listings		
	December 2025	Year-Over-Year Change	Month-Over-Month Change	December 2025	Year-Over-Year Change	Month-Over-Month Change	December 2025	Year-Over-Year Change	Month-Over-Month Change
\$149,999 or Less	73	+ 4.3%	+ 15.9%	1.9	+ 58.3%	+ 0.3%	53	+ 15.2%	- 1.9%
\$150,000 to \$249,999	72	+ 4.3%	- 25.8%	1.0	- 16.7%	- 17.1%	80	+ 9.6%	- 2.4%
\$250,000 to \$349,999	81	+ 68.8%	- 11.0%	2.1	+ 90.9%	+ 12.4%	51	- 15.0%	- 15.0%
\$350,000 or More	22	+ 1,000.0%	- 15.4%	0.8	+ 300.0%	+ 14.6%	27	+ 58.8%	- 18.2%
Total	248	+ 52.1%	- 10.5%	1.4	+ 41.3%	- 2.8%	211	+ 7.7%	- 7.9%

Showings



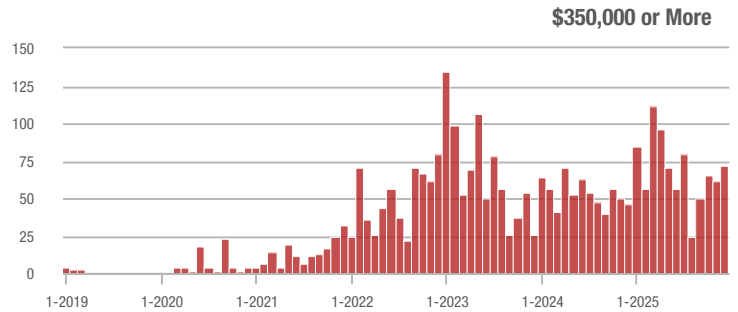
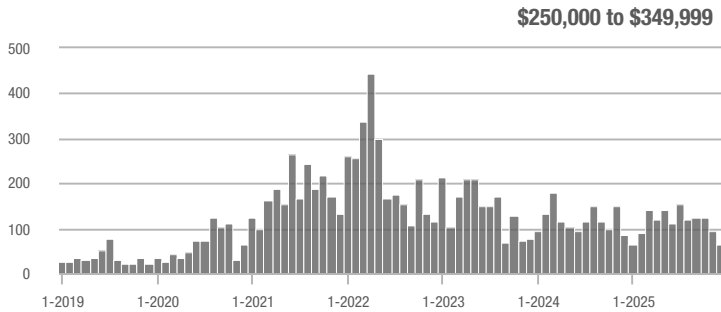
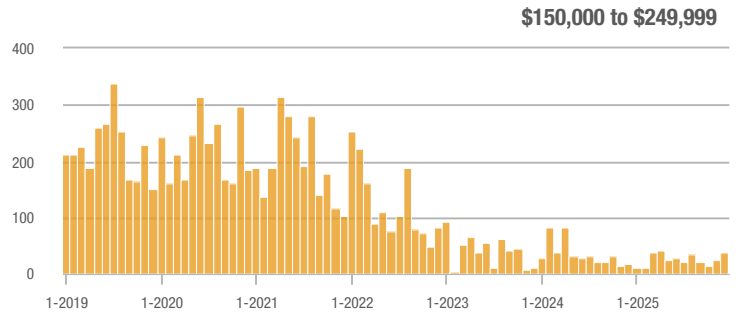
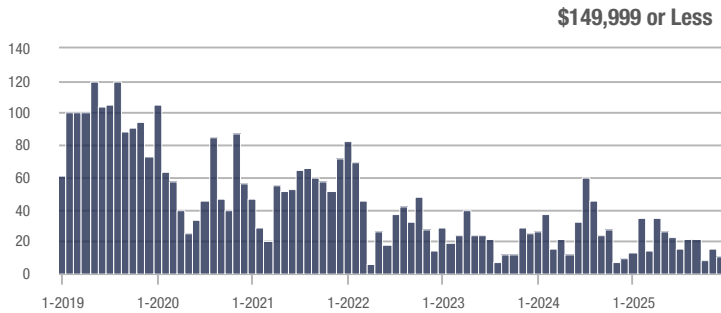
Buyer Interest (Showings/Listings)



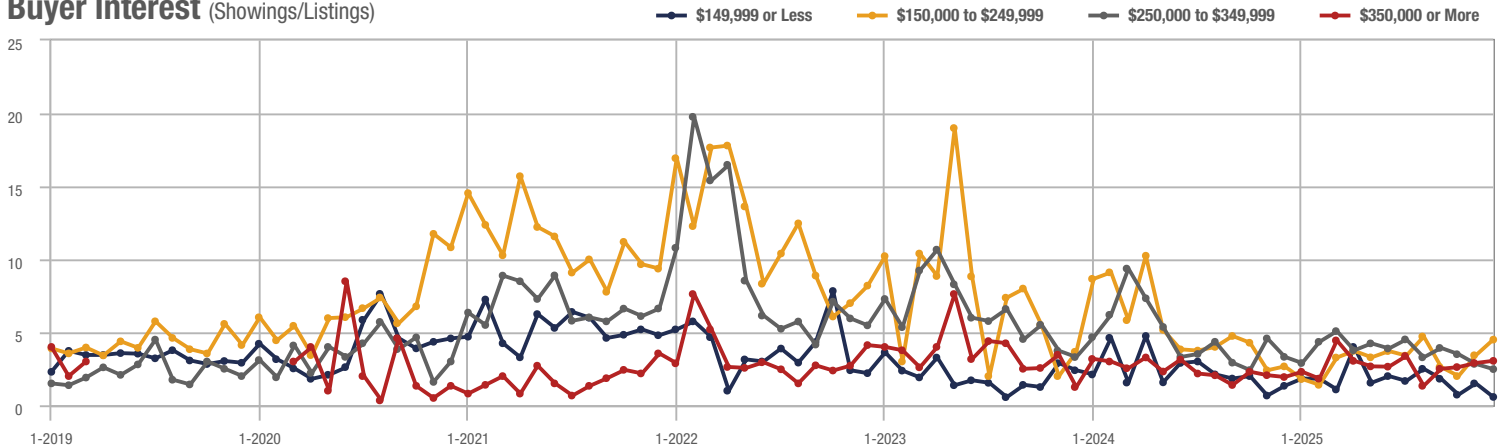
Cameron

Price Range	Total Showings			Buyer Interest (Showings/Listings)			Managed Listings		
	December 2025	Year-Over-Year Change	Month-Over-Month Change	December 2025	Year-Over-Year Change	Month-Over-Month Change	December 2025	Year-Over-Year Change	Month-Over-Month Change
\$149,999 or Less	11	+ 131.3%	- 26.7%	0.6	- 53.8%	- 61.9%	12	- 29.4%	- 14.3%
\$150,000 to \$249,999	37	+ 131.3%	+ 54.2%	4.5	+ 66.7%	+ 31.3%	10	+ 25.0%	0.0%
\$250,000 to \$349,999	64	- 23.8%	- 30.4%	2.5	- 24.2%	- 12.5%	28	- 15.2%	- 20.0%
\$350,000 or More	72	+ 56.5%	+ 16.1%	3.0	+ 57.9%	+ 5.0%	30	- 33.3%	- 6.3%
Total	184	+ 17.9%	- 4.7%	2.7	+ 51.9%	+ 8.4%	80	- 22.3%	- 12.1%

Showings



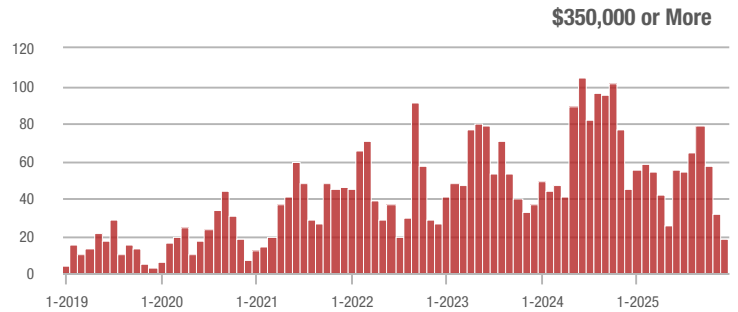
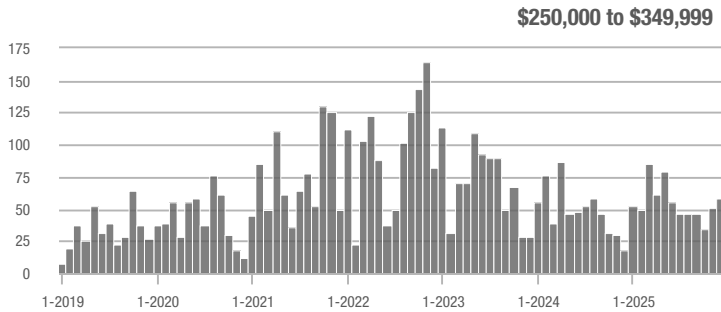
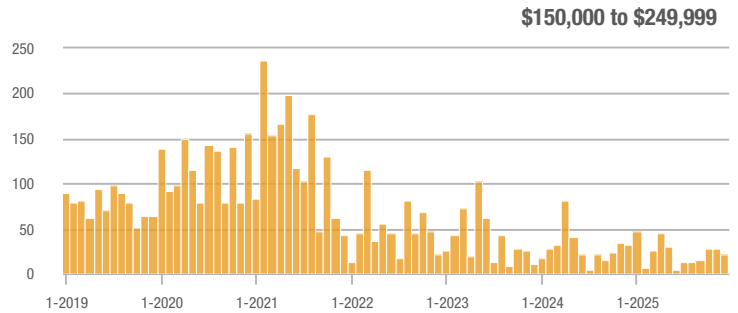
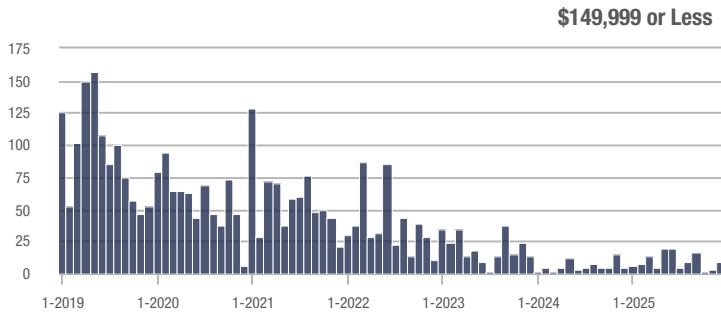
Buyer Interest (Showings/Listings)



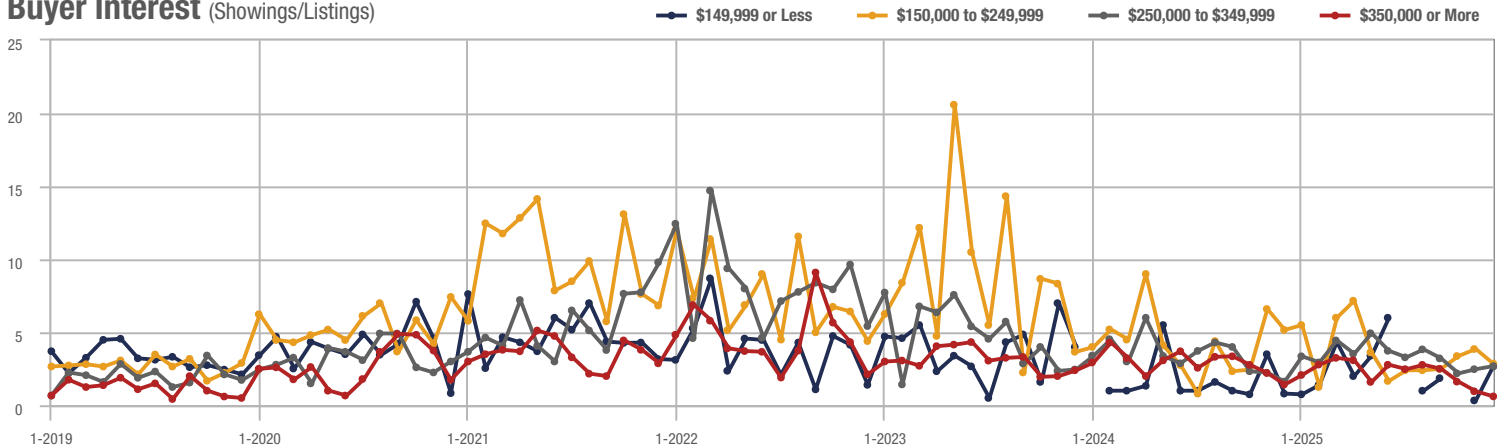
Zip Code 27330

Price Range	Total Showings			Buyer Interest (Showings/Listings)			Managed Listings		
	December 2025	Year-Over-Year Change	Month-Over-Month Change	December 2025	Year-Over-Year Change	Month-Over-Month Change	December 2025	Year-Over-Year Change	Month-Over-Month Change
\$149,999 or Less	9	- 31.3%	+ 200.0%	2.7	+ 237.5%	+ 700.0%	8	- 46.7%	0.0%
\$150,000 to \$249,999	22	- 31.3%	- 21.4%	2.9	- 44.2%	- 25.9%	8	0.0%	0.0%
\$250,000 to \$349,999	58	+ 222.2%	+ 13.7%	2.7	+ 68.8%	+ 8.5%	24	+ 118.2%	0.0%
\$350,000 or More	18	- 60.0%	- 43.8%	0.6	- 57.1%	- 36.6%	33	- 2.9%	- 10.8%
Total	107	+ 7.0%	- 6.1%	1.8	- 0.3%	- 1.0%	73	+ 7.4%	- 5.2%

Showings



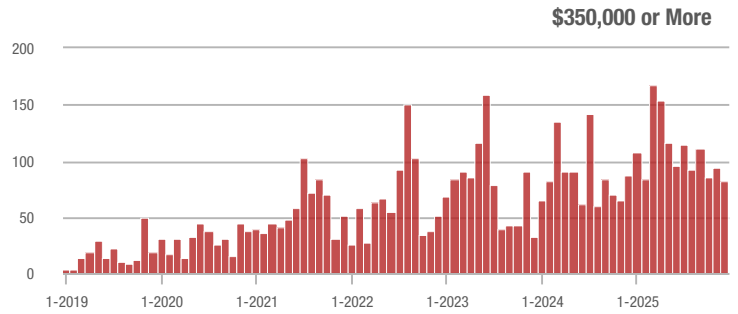
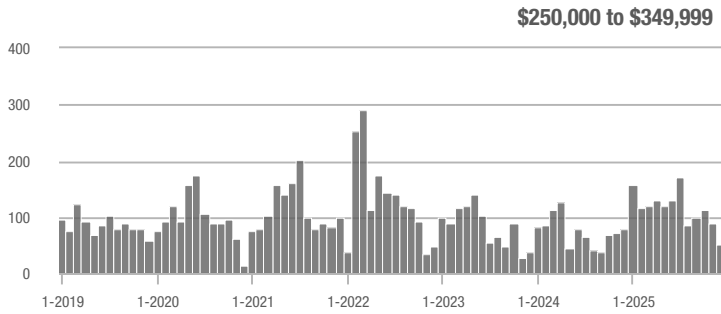
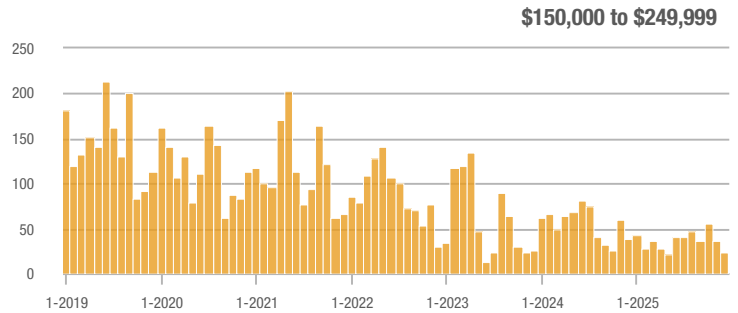
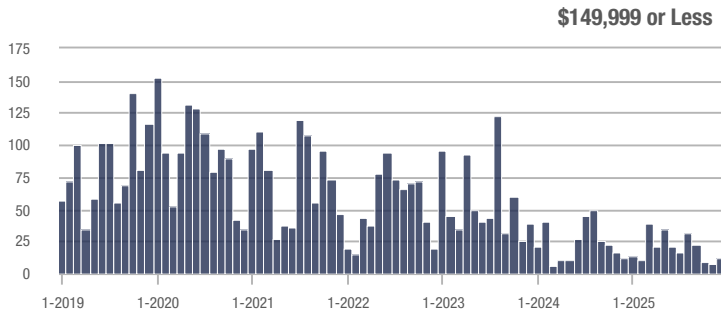
Buyer Interest (Showings/Listings)



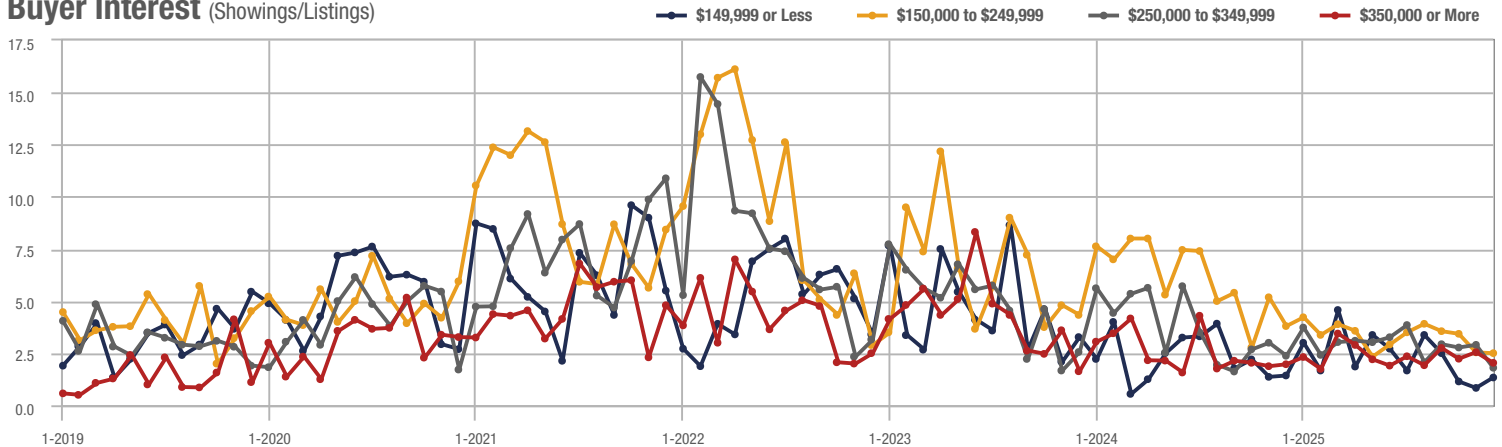
Zip Code 28312

Price Range	Total Showings			Buyer Interest (Showings/Listings)			Managed Listings		
	December 2025	Year-Over-Year Change	Month-Over-Month Change	December 2025	Year-Over-Year Change	Month-Over-Month Change	December 2025	Year-Over-Year Change	Month-Over-Month Change
\$149,999 or Less	12	- 39.5%	+ 71.4%	1.3	- 7.1%	+ 60.0%	10	- 33.3%	- 16.7%
\$150,000 to \$249,999	23	- 39.5%	- 36.1%	2.5	- 34.2%	- 1.5%	11	- 8.3%	- 35.3%
\$250,000 to \$349,999	50	- 35.9%	- 43.8%	1.8	- 25.0%	- 37.9%	31	- 35.4%	- 18.4%
\$350,000 or More	82	- 6.8%	- 12.8%	2.0	0.0%	- 20.1%	38	- 30.9%	- 9.5%
Total	167	- 22.7%	- 26.1%	1.9	+ 11.7%	- 10.5%	90	- 30.8%	- 17.4%

Showings



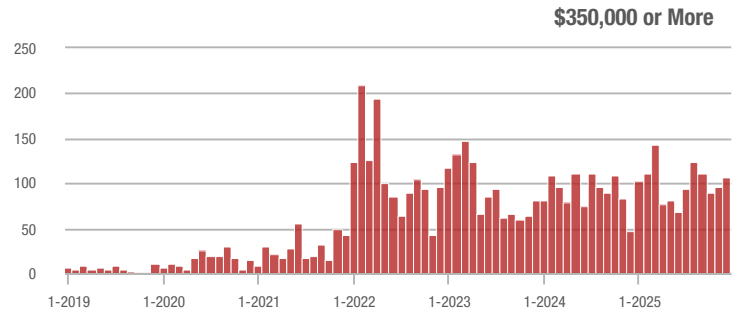
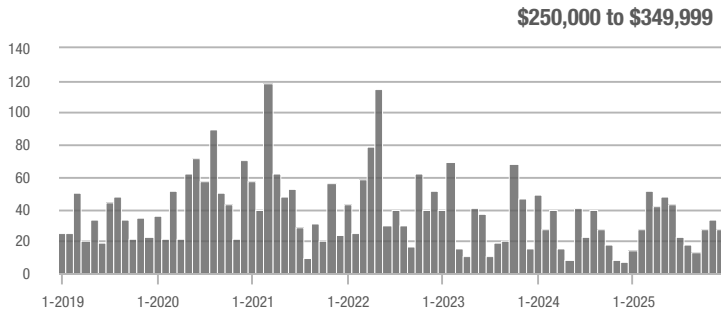
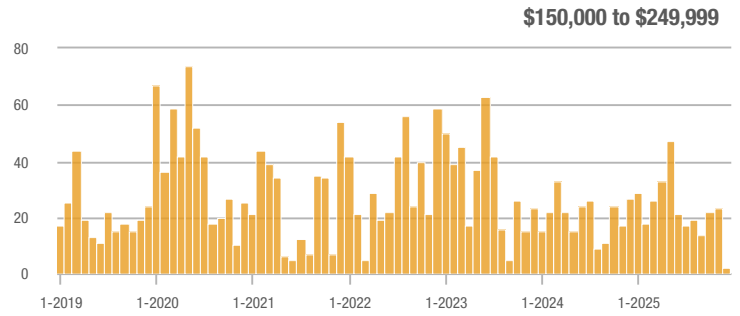
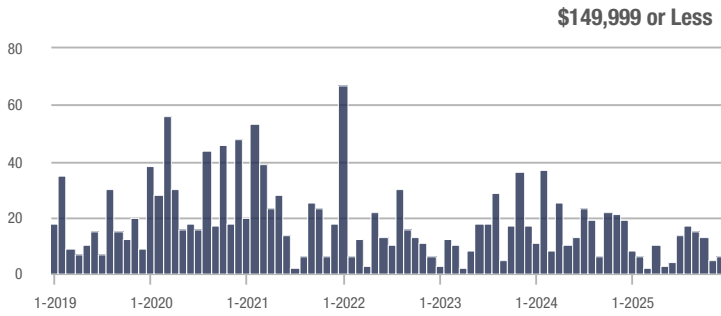
Buyer Interest (Showings/Listings)



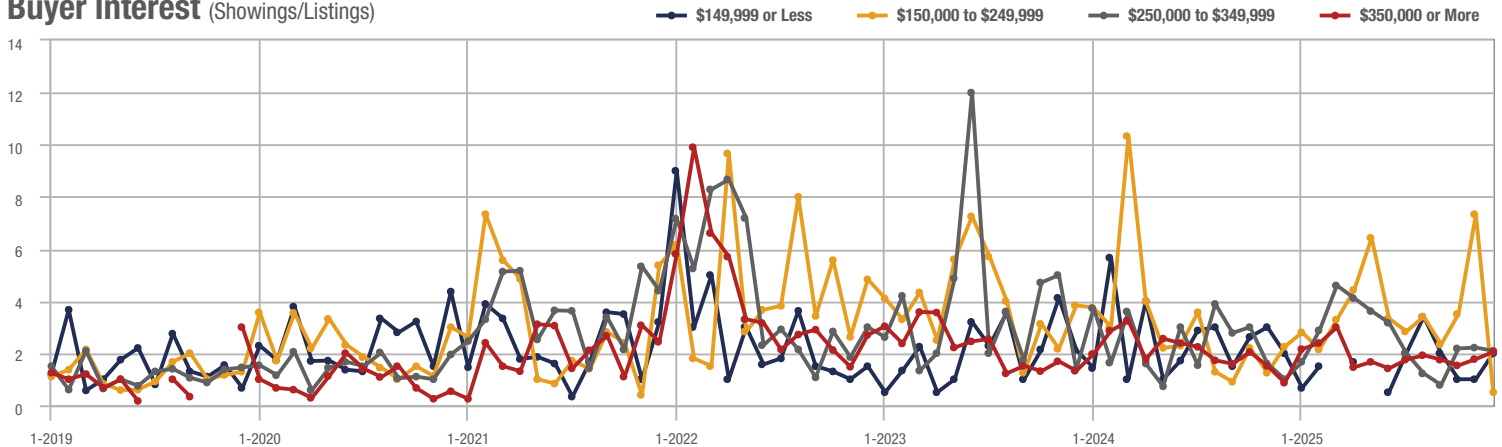
Moore County

Price Range	Total Showings			Buyer Interest (Showings/Listings)			Managed Listings		
	December 2025	Year-Over-Year Change	Month-Over-Month Change	December 2025	Year-Over-Year Change	Month-Over-Month Change	December 2025	Year-Over-Year Change	Month-Over-Month Change
\$149,999 or Less	6	- 92.6%	+ 20.0%	2.0	0.0%	+ 100.0%	7	- 65.0%	- 36.4%
\$150,000 to \$249,999	2	- 92.6%	- 91.3%	0.5	- 78.3%	- 93.2%	6	- 60.0%	+ 20.0%
\$250,000 to \$349,999	27	+ 285.7%	- 20.6%	2.1	+ 110.0%	- 5.6%	18	+ 50.0%	- 14.3%
\$350,000 or More	106	+ 120.8%	+ 10.4%	2.0	+ 122.2%	+ 15.6%	71	- 17.4%	- 9.0%
Total	141	+ 39.6%	- 10.8%	1.9	+ 82.0%	+ 0.6%	102	- 23.3%	- 11.3%

Showings



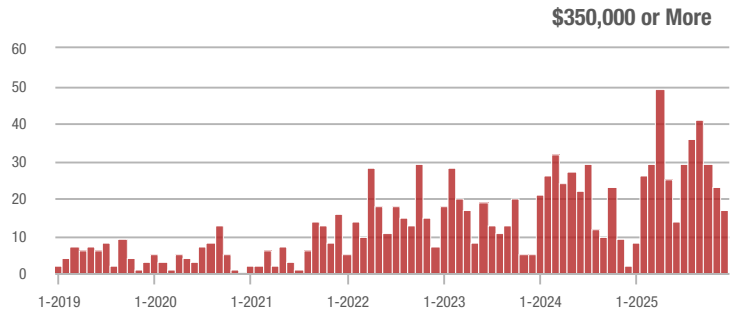
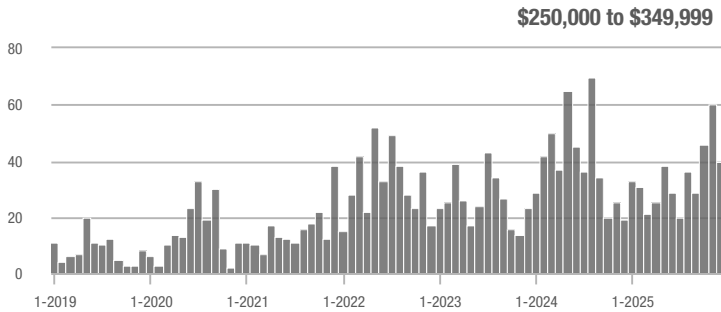
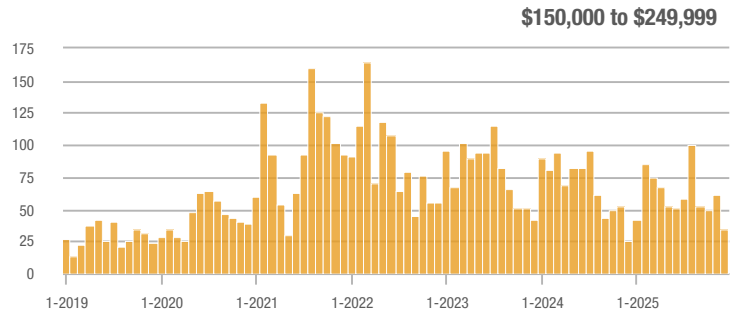
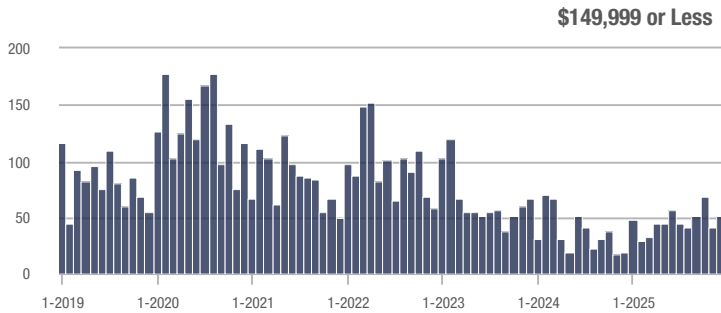
Buyer Interest (Showings/Listings)



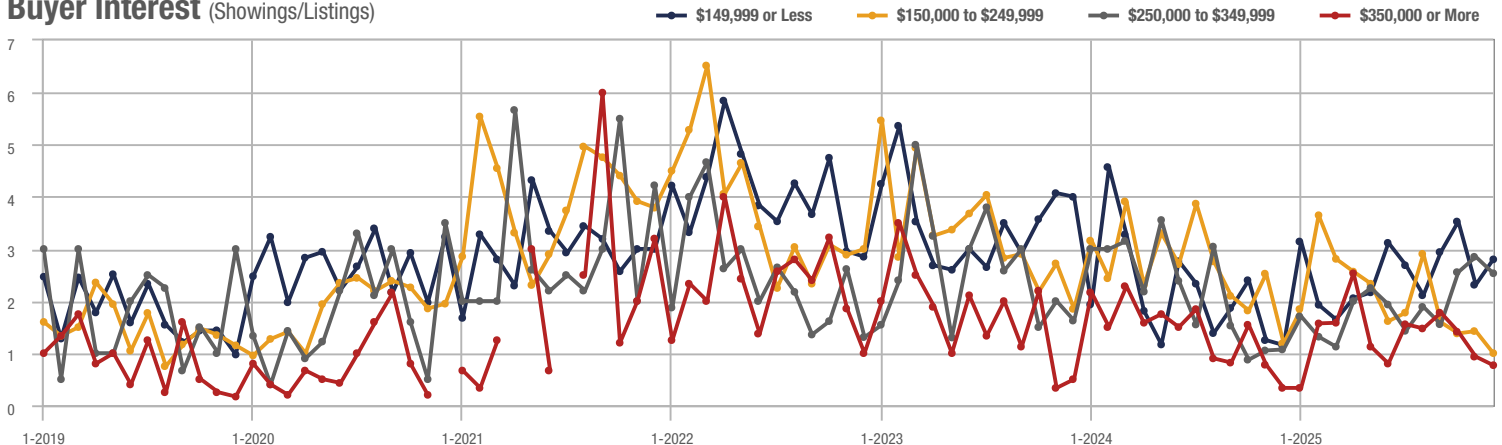
Lumberton

Price Range	Total Showings			Buyer Interest (Showings/Listings)			Managed Listings		
	December 2025	Year-Over-Year Change	Month-Over-Month Change	December 2025	Year-Over-Year Change	Month-Over-Month Change	December 2025	Year-Over-Year Change	Month-Over-Month Change
\$149,999 or Less	52	+ 40.0%	+ 26.8%	2.8	+ 133.3%	+ 21.1%	26	+ 23.8%	- 7.1%
\$150,000 to \$249,999	35	+ 40.0%	- 42.6%	1.0	- 16.7%	- 29.8%	35	+ 12.9%	- 12.5%
\$250,000 to \$349,999	40	+ 110.5%	- 33.3%	2.5	+ 127.3%	- 11.1%	20	0.0%	- 20.0%
\$350,000 or More	17	+ 750.0%	- 26.1%	0.8	+ 166.7%	- 17.6%	21	+ 61.5%	- 12.5%
Total	144	+ 125.0%	- 22.2%	1.6	+ 87.5%	- 10.7%	102	+ 20.0%	- 12.8%

Showings



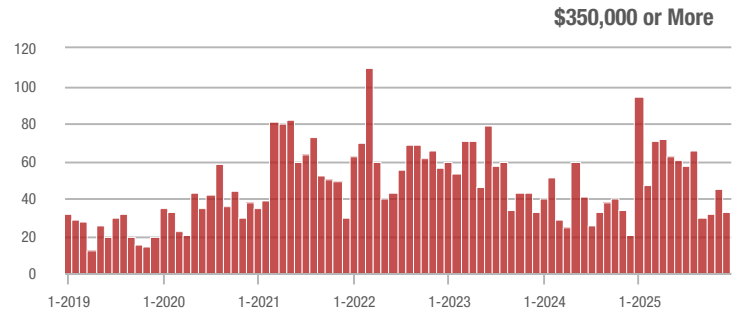
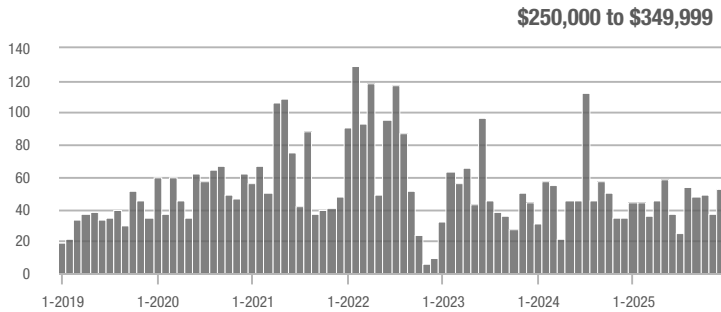
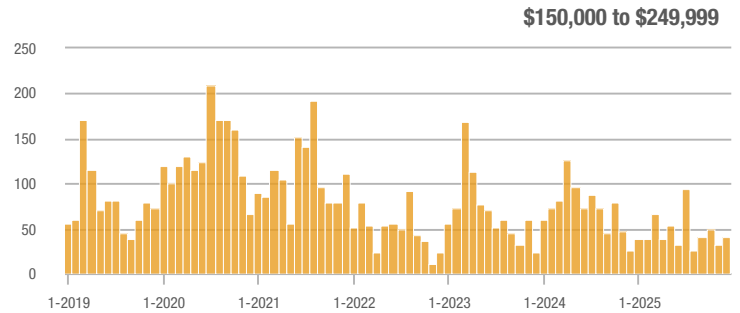
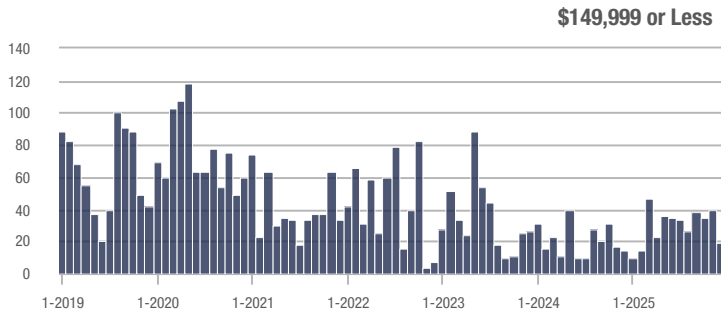
Buyer Interest (Showings/Listings)



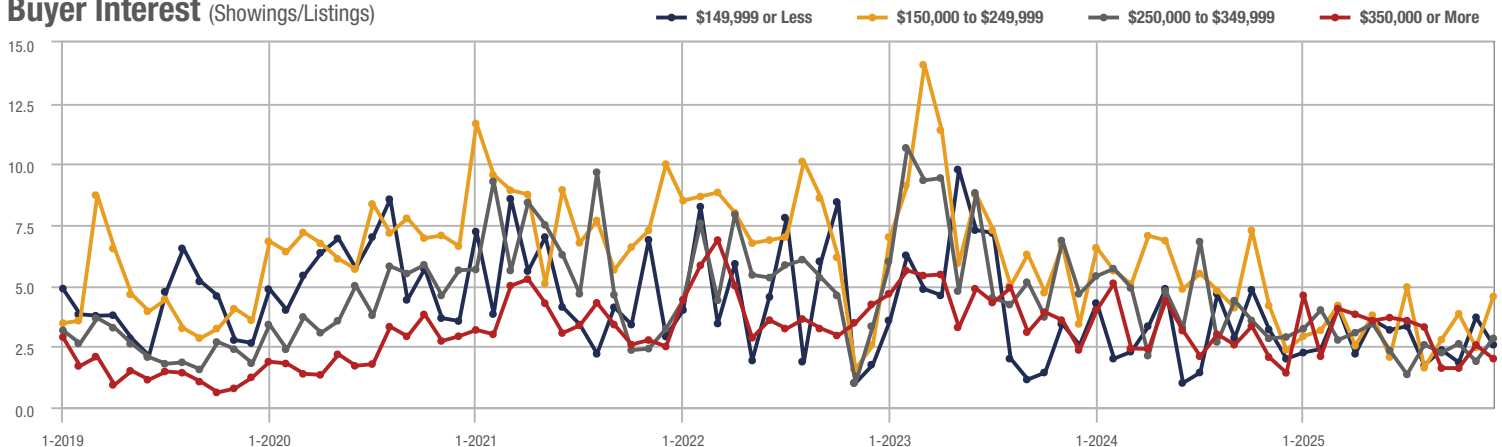
Zip Code 28305

Price Range	Total Showings			Buyer Interest (Showings/Listings)			Managed Listings		
	December 2025	Year-Over-Year Change	Month-Over-Month Change	December 2025	Year-Over-Year Change	Month-Over-Month Change	December 2025	Year-Over-Year Change	Month-Over-Month Change
\$149,999 or Less	19	+ 57.7%	- 51.3%	2.6	+ 30.0%	- 30.5%	13	+ 18.2%	- 23.5%
\$150,000 to \$249,999	41	+ 57.7%	+ 24.2%	4.6	+ 91.7%	+ 85.1%	10	- 9.1%	- 28.6%
\$250,000 to \$349,999	53	+ 51.4%	+ 43.2%	2.8	- 3.4%	+ 49.5%	19	+ 90.0%	- 9.5%
\$350,000 or More	33	+ 57.1%	- 26.7%	2.0	+ 42.9%	- 22.0%	18	+ 20.0%	- 10.0%
Total	146	+ 52.1%	- 5.2%	2.9	+ 19.1%	+ 13.8%	60	+ 27.7%	- 16.7%

Showings



Buyer Interest (Showings/Listings)

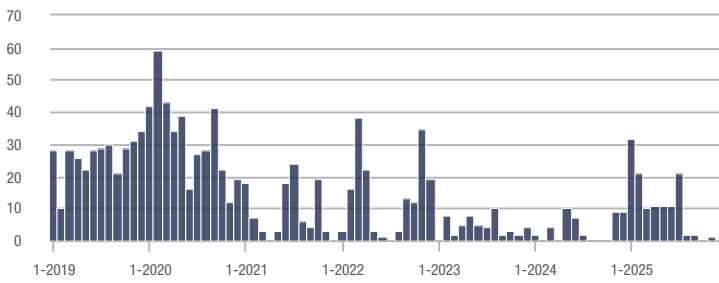


Lillington

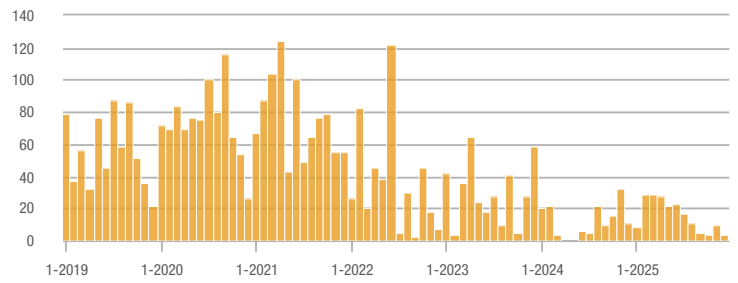
Price Range	Total Showings			Buyer Interest (Showings/Listings)			Managed Listings		
	December 2025	Year-Over-Year Change	Month-Over-Month Change	December 2025	Year-Over-Year Change	Month-Over-Month Change	December 2025	Year-Over-Year Change	Month-Over-Month Change
\$149,999 or Less	0	—	—	—	—	—	0	—	—
\$150,000 to \$249,999	3	- 72.7%	- 70.0%	0.8	- 85.5%	- 62.5%	6	+ 20.0%	- 14.3%
\$250,000 to \$349,999	21	- 53.3%	- 4.5%	2.0	- 16.7%	- 9.1%	26	+ 4.0%	- 13.3%
\$350,000 or More	14	+ 366.7%	- 68.2%	1.7	+ 112.5%	- 55.3%	18	+ 125.0%	- 25.0%
Total	38	- 44.1%	- 50.6%	1.6	- 50.8%	- 38.8%	50	+ 13.6%	- 19.4%

Showings

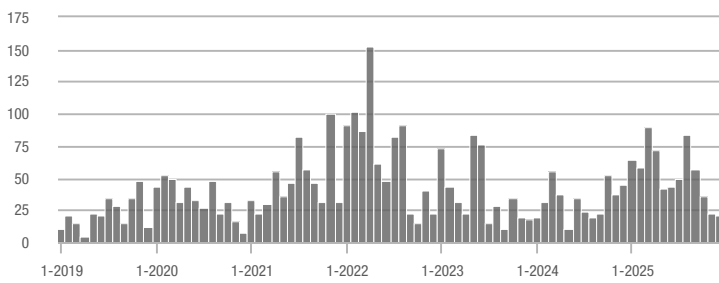
\$149,999 or Less



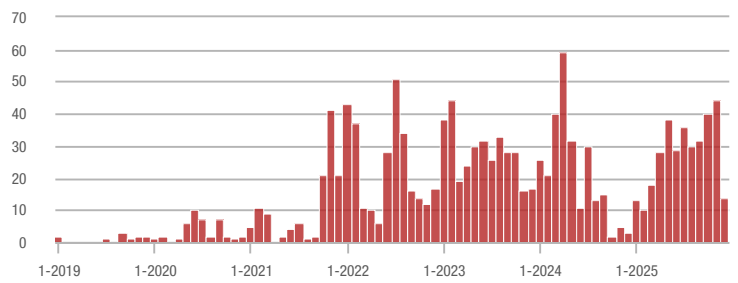
\$150,000 to \$249,999



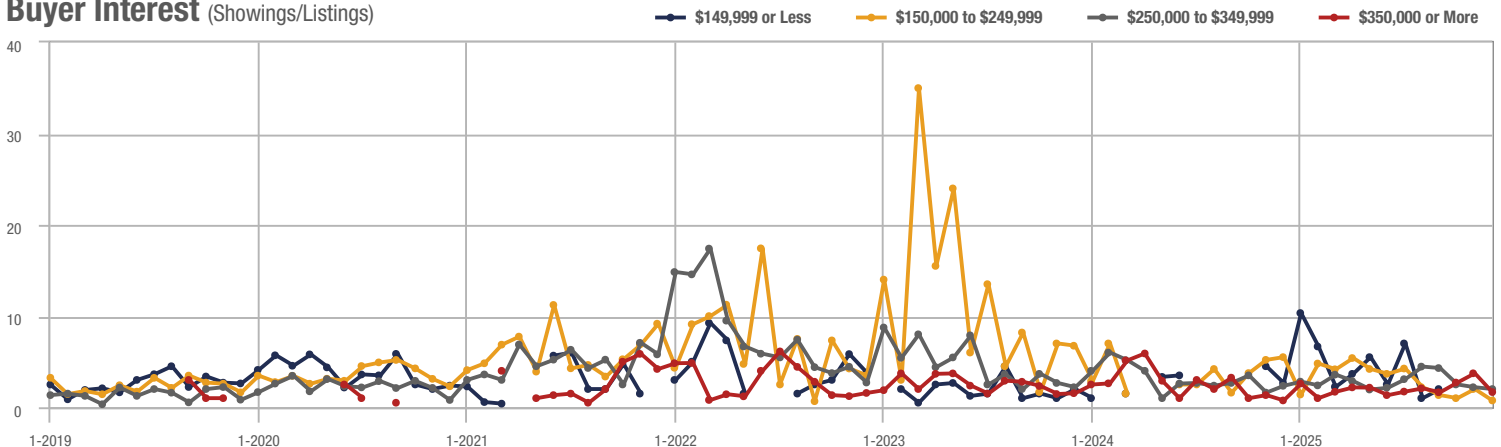
\$250,000 to \$349,999



\$350,000 or More



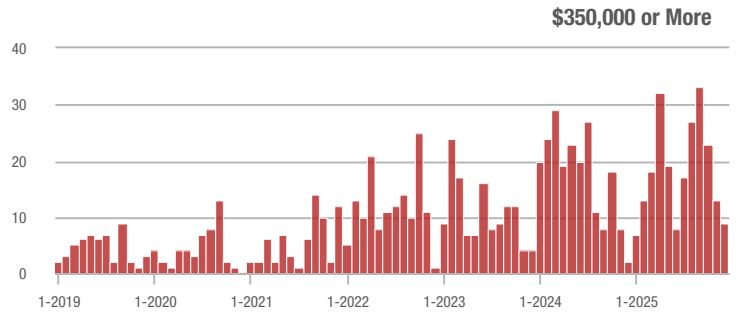
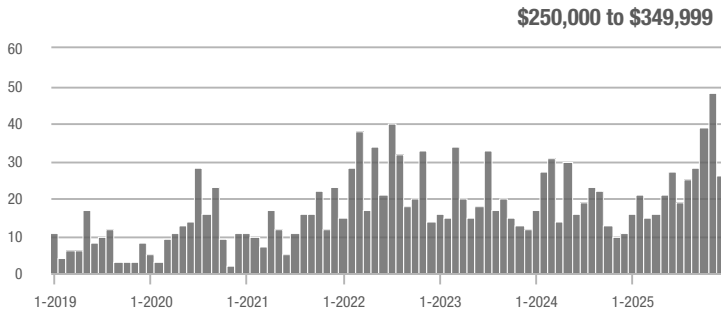
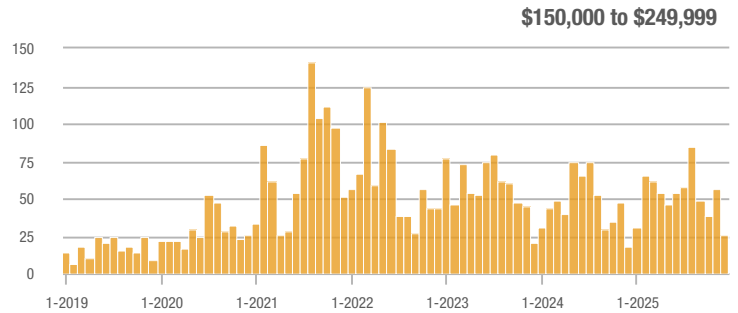
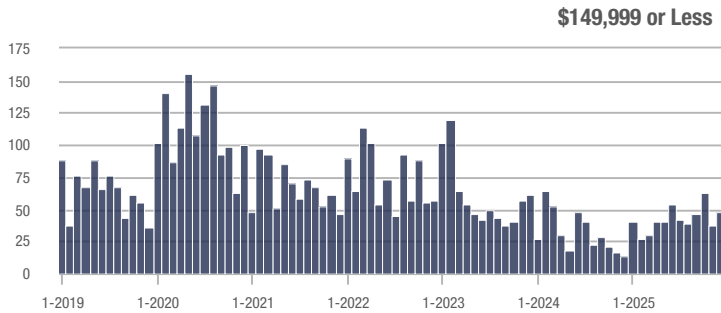
Buyer Interest (Showings/Listings)



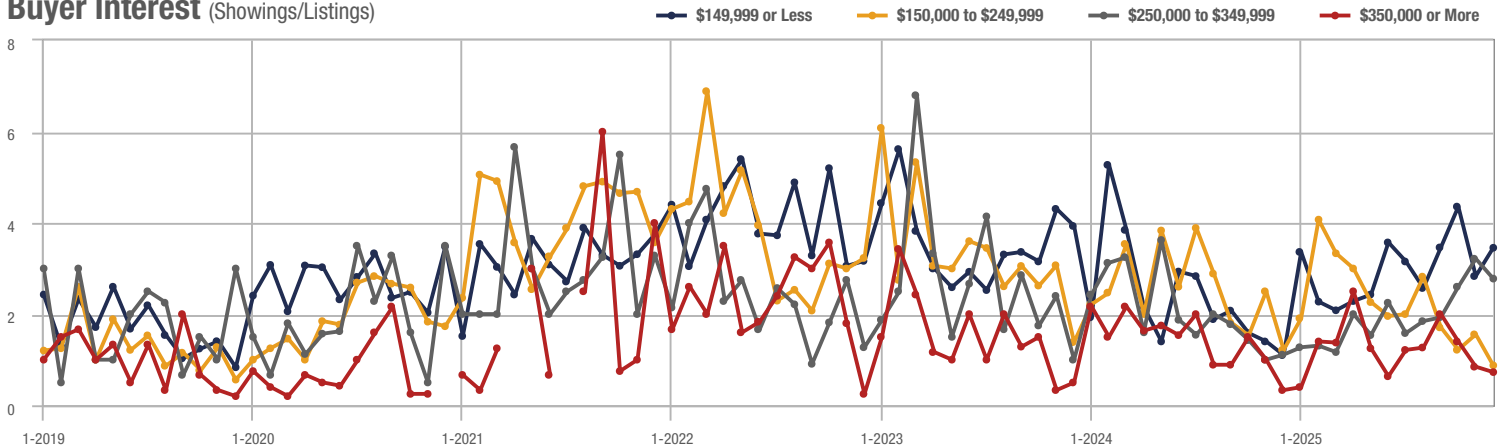
Zip Code 28358

Price Range	Total Showings			Buyer Interest (Showings/Listings)			Managed Listings		
	December 2025	Year-Over-Year Change	Month-Over-Month Change	December 2025	Year-Over-Year Change	Month-Over-Month Change	December 2025	Year-Over-Year Change	Month-Over-Month Change
\$149,999 or Less	48	+ 44.4%	+ 26.3%	3.5	+ 218.2%	+ 21.9%	22	+ 22.2%	- 8.3%
\$150,000 to \$249,999	26	+ 44.4%	- 53.6%	0.9	- 25.0%	- 43.8%	28	+ 33.3%	- 15.2%
\$250,000 to \$349,999	26	+ 136.4%	- 45.8%	2.8	+ 154.5%	- 13.6%	13	0.0%	- 27.8%
\$350,000 or More	9	+ 350.0%	- 30.8%	0.7	+ 133.3%	- 14.0%	17	+ 70.0%	- 15.0%
Total	109	+ 142.2%	- 29.7%	1.7	+ 87.7%	- 16.5%	80	+ 29.0%	- 15.8%

Showings



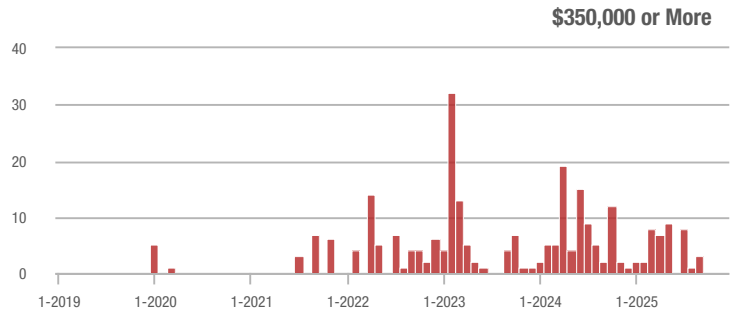
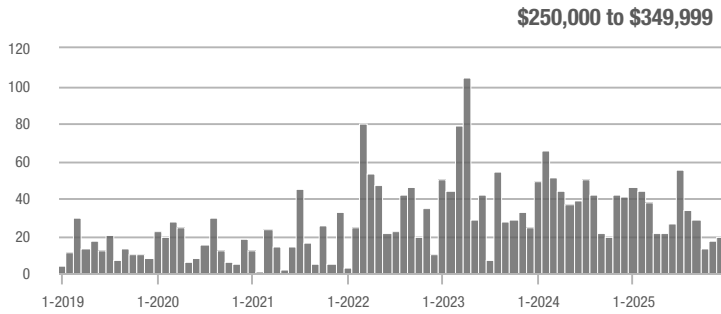
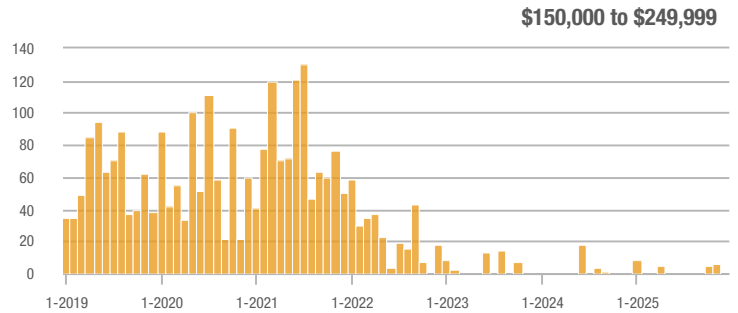
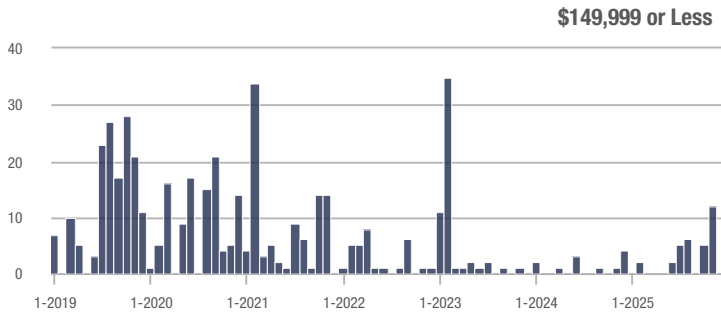
Buyer Interest (Showings/Listings)



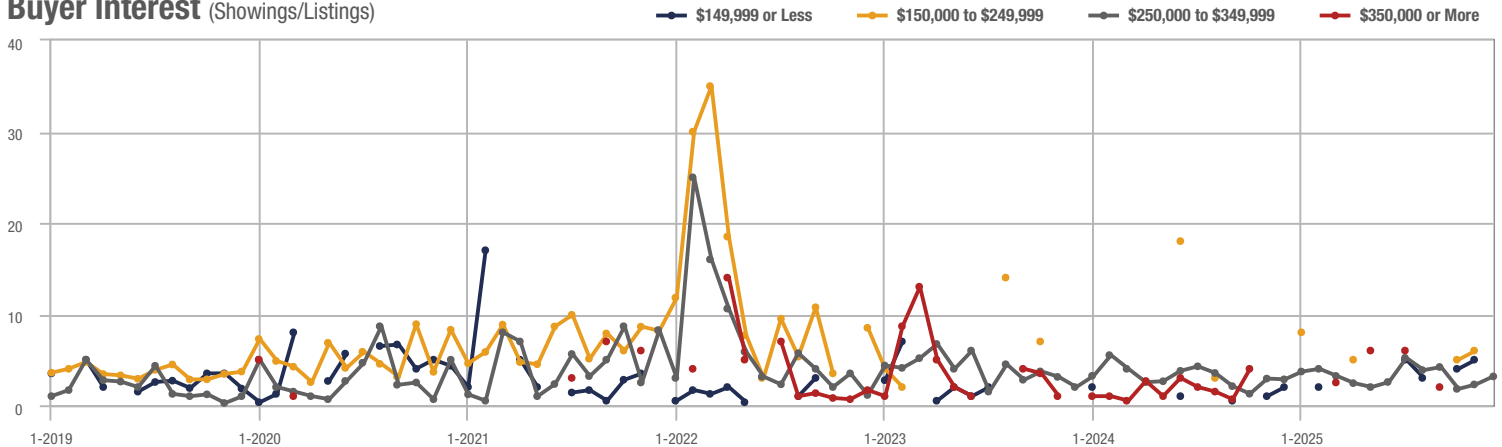
Bunnlevel

Price Range	Total Showings			Buyer Interest (Showings/Listings)			Managed Listings		
	December 2025	Year-Over-Year Change	Month-Over-Month Change	December 2025	Year-Over-Year Change	Month-Over-Month Change	December 2025	Year-Over-Year Change	Month-Over-Month Change
\$149,999 or Less	0	—	—	—	—	—	2	0.0%	- 33.3%
\$150,000 to \$249,999	0	—	—	—	—	—	0	—	—
\$250,000 to \$349,999	19	- 53.7%	+ 11.8%	3.2	+ 14.3%	+ 38.5%	6	- 70.0%	- 25.0%
\$350,000 or More	0	—	—	—	—	—	1	- 66.7%	—
Total	19	- 58.7%	- 45.7%	2.4	+ 19.3%	- 27.6%	9	- 65.4%	- 25.0%

Showings



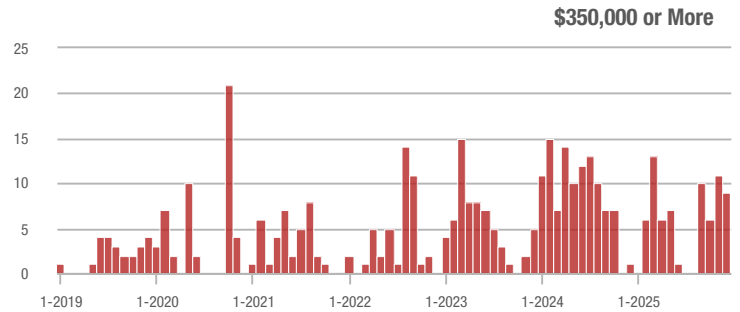
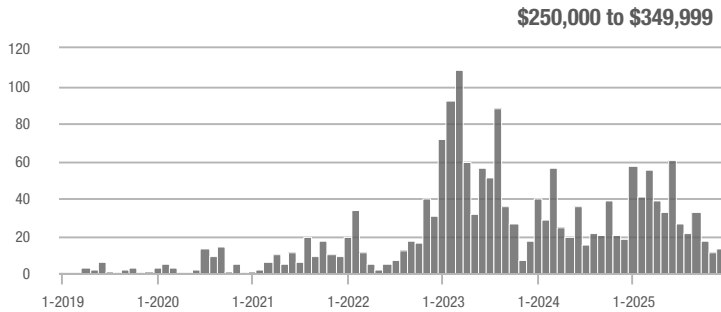
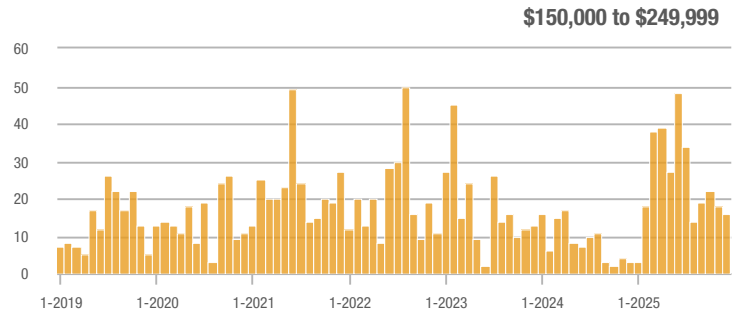
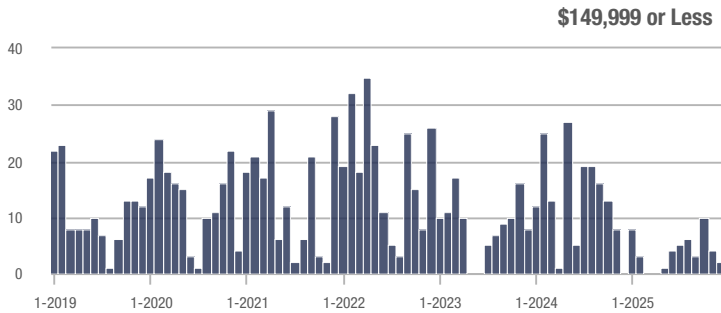
Buyer Interest (Showings/Listings)



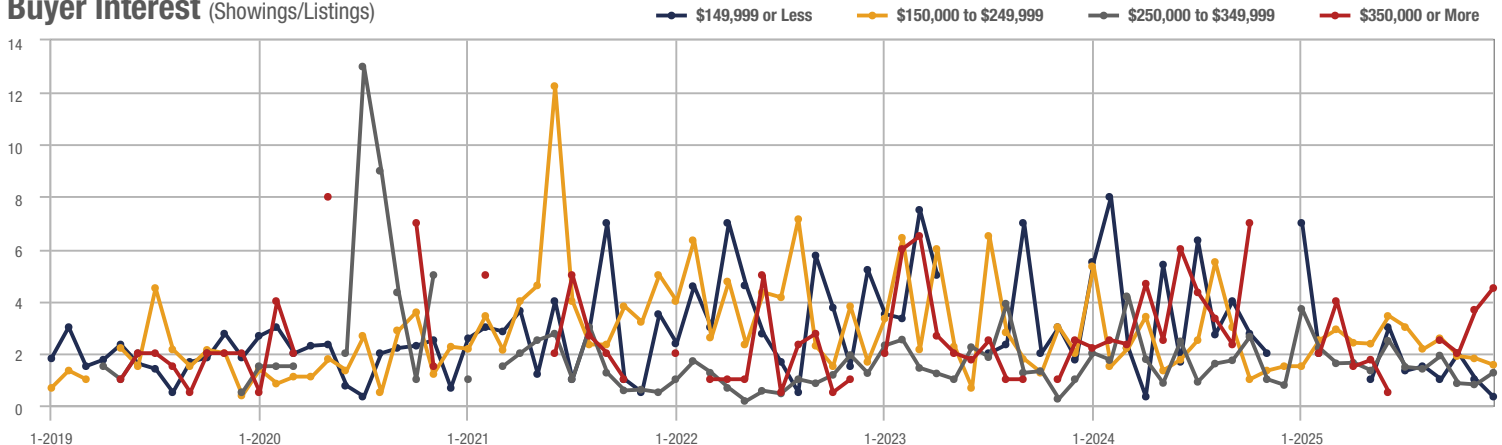
Sampson County

Price Range	Total Showings			Buyer Interest (Showings/Listings)			Managed Listings		
	December 2025	Year-Over-Year Change	Month-Over-Month Change	December 2025	Year-Over-Year Change	Month-Over-Month Change	December 2025	Year-Over-Year Change	Month-Over-Month Change
\$149,999 or Less	2	—	- 50.0%	0.3	—	- 66.7%	4	+ 33.3%	- 33.3%
\$150,000 to \$249,999	16	+ 433.3%	- 11.1%	1.6	+ 6.7%	- 13.6%	11	+ 120.0%	- 15.4%
\$250,000 to \$349,999	13	- 27.8%	+ 18.2%	1.3	+ 62.5%	+ 56.3%	19	- 36.7%	- 9.5%
\$350,000 or More	9	+ 800.0%	- 18.2%	4.5	—	+ 22.7%	2	0.0%	- 33.3%
Total	40	+ 81.8%	- 9.1%	1.5	+ 102.0%	+ 8.6%	36	- 10.0%	- 16.3%

Showings



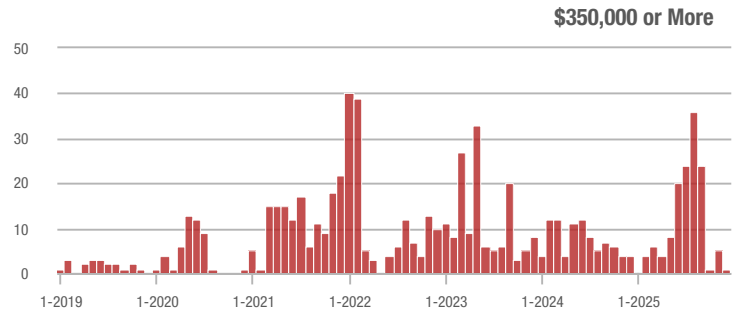
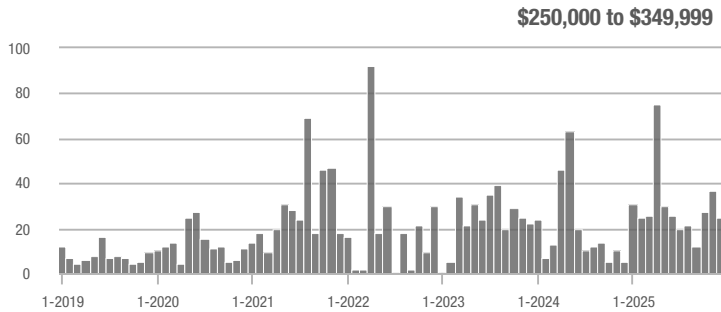
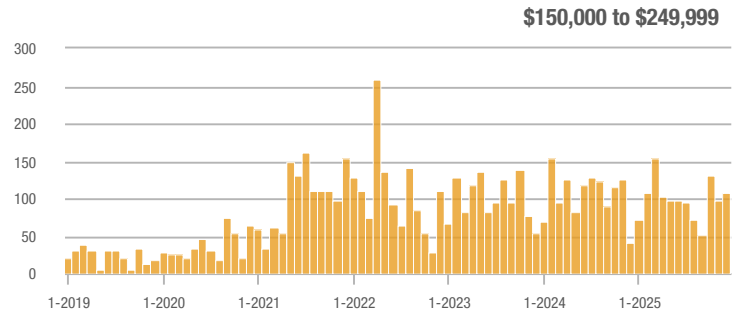
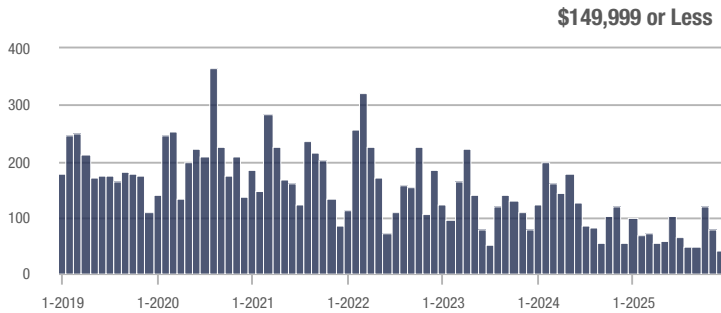
Buyer Interest (Showings/Listings)



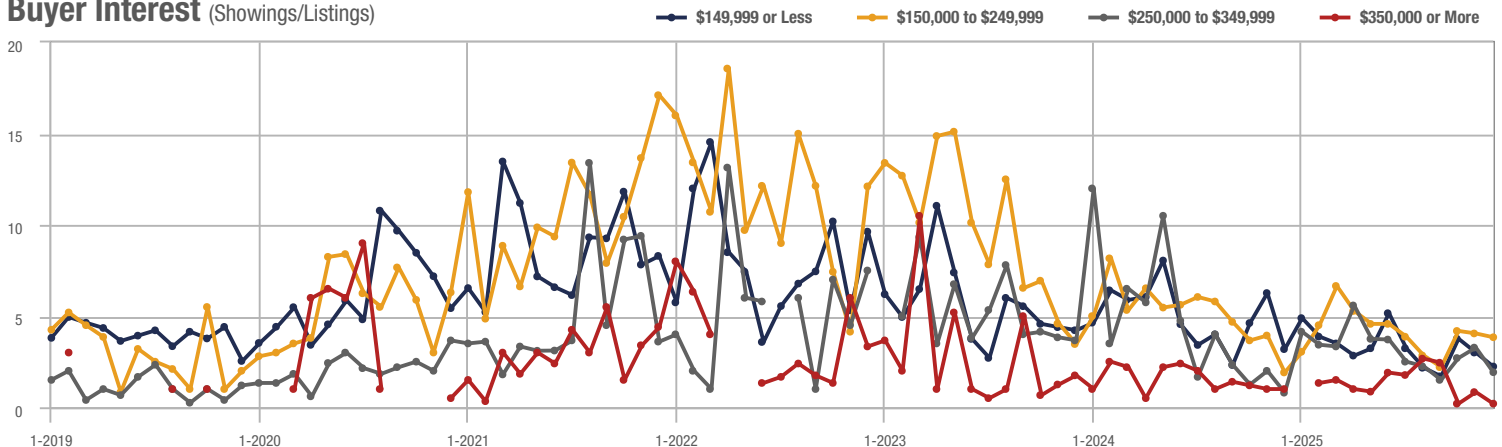
Zip Code 28301

Price Range	Total Showings			Buyer Interest (Showings/Listings)			Managed Listings		
	December 2025	Year-Over-Year Change	Month-Over-Month Change	December 2025	Year-Over-Year Change	Month-Over-Month Change	December 2025	Year-Over-Year Change	Month-Over-Month Change
\$149,999 or Less	40	+ 154.8%	- 50.0%	2.2	- 31.3%	- 25.5%	27	- 3.6%	- 22.9%
\$150,000 to \$249,999	107	+ 154.8%	+ 10.3%	3.8	+ 100.0%	- 5.1%	30	+ 20.0%	+ 3.4%
\$250,000 to \$349,999	25	+ 400.0%	- 32.4%	1.9	+ 137.5%	- 41.2%	14	+ 100.0%	+ 7.7%
\$350,000 or More	1	- 75.0%	- 80.0%	0.2	- 80.0%	- 76.0%	5	+ 25.0%	- 16.7%
Total	173	+ 61.7%	- 21.0%	2.7	+ 36.2%	- 13.7%	76	+ 18.8%	- 8.4%

Showings



Buyer Interest (Showings/Listings)

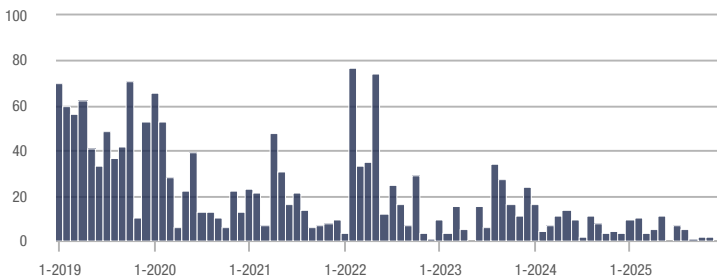


Parkton

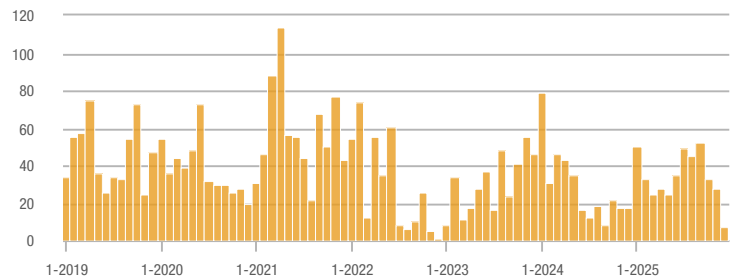
Price Range	Total Showings			Buyer Interest (Showings/Listings)			Managed Listings		
	December 2025	Year-Over-Year Change	Month-Over-Month Change	December 2025	Year-Over-Year Change	Month-Over-Month Change	December 2025	Year-Over-Year Change	Month-Over-Month Change
\$149,999 or Less	0	—	—	—	—	—	2	- 50.0%	- 33.3%
\$150,000 to \$249,999	7	- 58.8%	- 75.0%	0.6	- 62.5%	- 70.0%	14	+ 40.0%	- 22.2%
\$250,000 to \$349,999	33	+ 37.5%	- 5.7%	2.6	+ 44.4%	+ 19.2%	16	- 38.5%	- 15.8%
\$350,000 or More	0	—	—	—	—	—	0	—	—
Total	40	- 9.1%	- 38.5%	1.7	+ 27.8%	- 23.1%	32	- 28.9%	- 20.0%

Showings

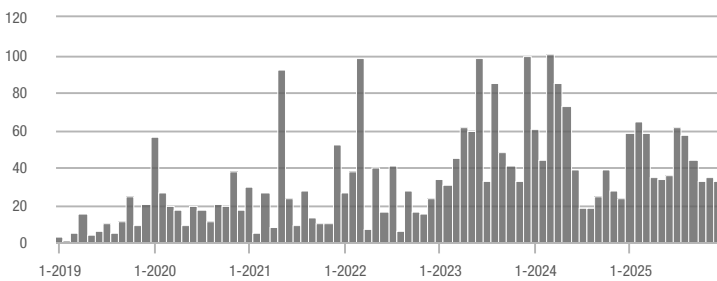
\$149,999 or Less



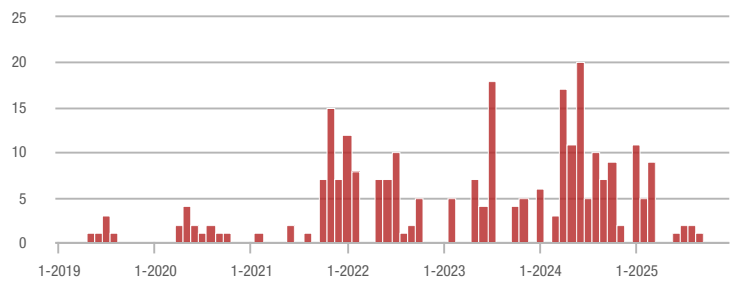
\$150,000 to \$249,999



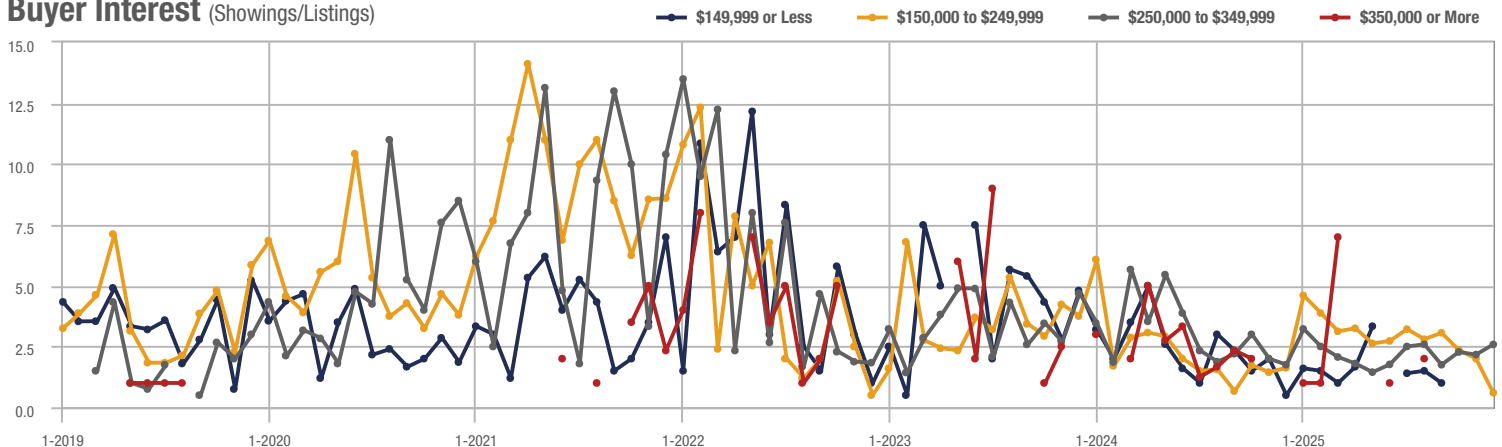
\$250,000 to \$349,999



\$350,000 or More



Buyer Interest (Showings/Listings)

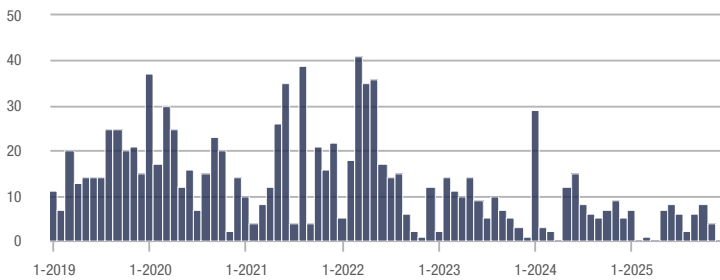


Stedman

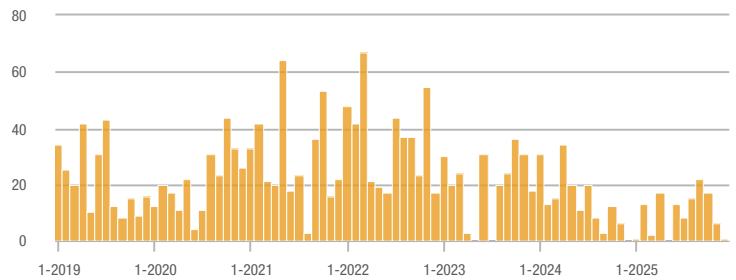
Price Range	Total Showings			Buyer Interest (Showings/Listings)			Managed Listings		
	December 2025	Year-Over-Year Change	Month-Over-Month Change	December 2025	Year-Over-Year Change	Month-Over-Month Change	December 2025	Year-Over-Year Change	Month-Over-Month Change
\$149,999 or Less	0	—	—	—	—	—	0	—	—
\$150,000 to \$249,999	1	—	- 83.3%	0.5	—	- 83.3%	2	+ 100.0%	- 33.3%
\$250,000 to \$349,999	14	- 77.4%	- 6.7%	1.2	- 87.6%	- 18.3%	9	- 10.0%	- 10.0%
\$350,000 or More	7	- 41.7%	- 50.0%	1.3	- 64.9%	- 66.7%	6	+ 50.0%	+ 50.0%
Total	22	- 72.2%	- 43.6%	1.1	- 68.9%	- 40.3%	17	- 10.5%	- 5.6%

Showings

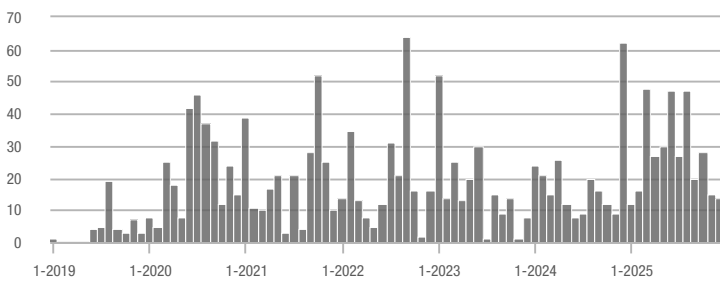
\$149,999 or Less



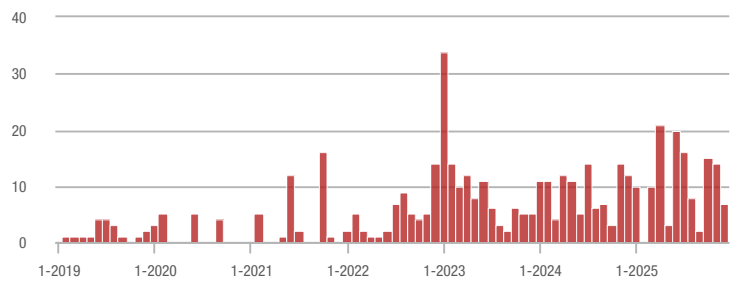
\$150,000 to \$249,999



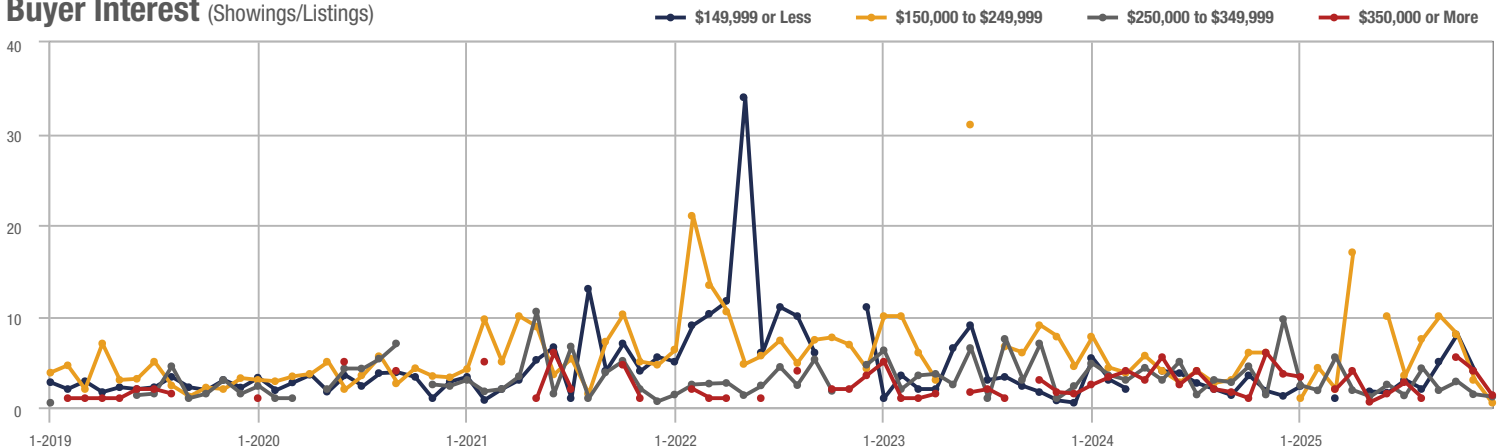
\$250,000 to \$349,999



\$350,000 or More



Buyer Interest (Showings/Listings)

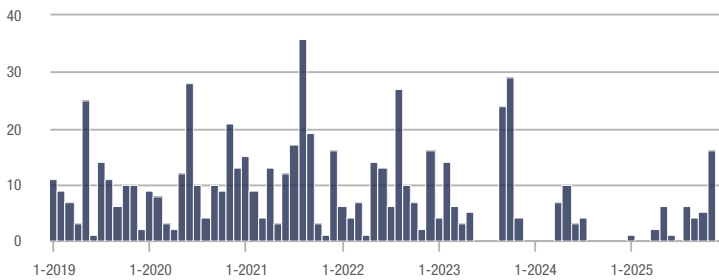


Dunn

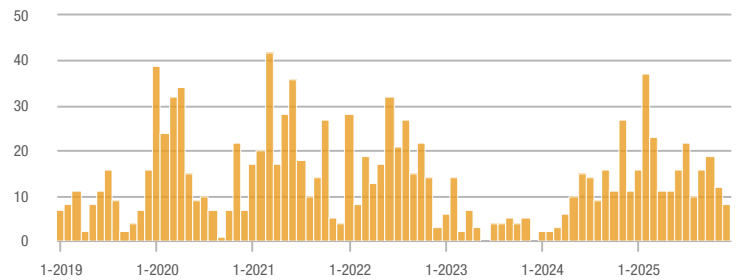
Price Range	Total Showings			Buyer Interest (Showings/Listings)			Managed Listings		
	December 2025	Year-Over-Year Change	Month-Over-Month Change	December 2025	Year-Over-Year Change	Month-Over-Month Change	December 2025	Year-Over-Year Change	Month-Over-Month Change
\$149,999 or Less	0	—	—	—	—	—	1	0.0%	- 50.0%
\$150,000 to \$249,999	8	- 27.3%	- 33.3%	1.6	0.0%	- 41.8%	6	- 14.3%	+ 20.0%
\$250,000 to \$349,999	13	+ 160.0%	- 31.6%	1.4	+ 100.0%	- 40.5%	14	+ 55.6%	+ 7.7%
\$350,000 or More	15	+ 25.0%	+ 66.7%	3.3	- 17.5%	+ 62.5%	7	+ 133.3%	0.0%
Total	36	+ 28.6%	- 35.7%	1.8	- 8.2%	- 38.0%	28	+ 40.0%	+ 3.7%

Showings

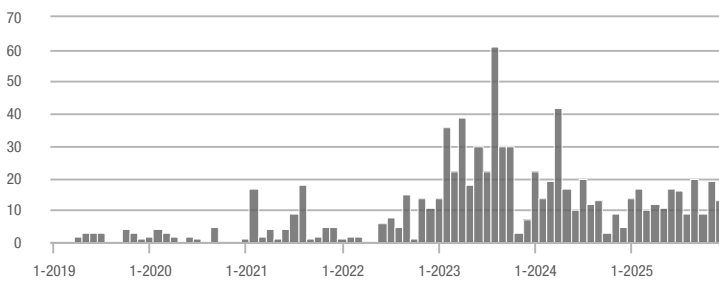
\$149,999 or Less



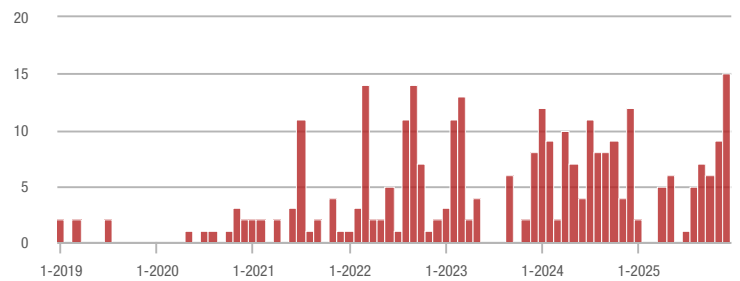
\$150,000 to \$249,999



\$250,000 to \$349,999



\$350,000 or More



Buyer Interest (Showings/Listings)

