



LONGLEAF PINE REALTORS®, INC.

P.O. BOX 53189 • 2412 RAEFORD ROAD • FAYETTEVILLE, NORTH CAROLINA 28305
(910) 323-1421 • FAX (910) 323-0955 • www.longleafpinerealtors.com



Secondary REALTOR® Application

** Secondary REALTOR® Member – An Applicant that is currently a member of another Association of REALTORS® prior to applying for membership with our Association.

PROCEDURES FOR SECONDARY REALTORS®:

The **Secondary REALTOR®** Form needs to be filled out completely and returned to the Association office along with a **Letter of Good Standing** from your primary Association (the Association you pay state and national dues through).

TO JOIN MLS:

If you are applying as a new firm, the Broker-In-Charge (Designated REALTOR®) must also complete the New Company Application. There is a one - time **\$750.00** Initiation Fee.

Secondary Membership:

The annual local dues for secondary members are **\$215.00** and are due each January. The fee for the annual dues is prorated monthly for new members and is to be paid when the applicant turns in their Secondary Member Information Form and Letter of Good Standing. The pro-rations for 2019 are as follows:

	Jan	Feb	Mar	Apr	May	June	July	Aug	Sept	Oct	Nov	Dec
REALTOR® Secondary**	\$215	\$200	\$180	\$165	\$145	\$125	\$110	\$90	\$75	\$55	\$40	\$20

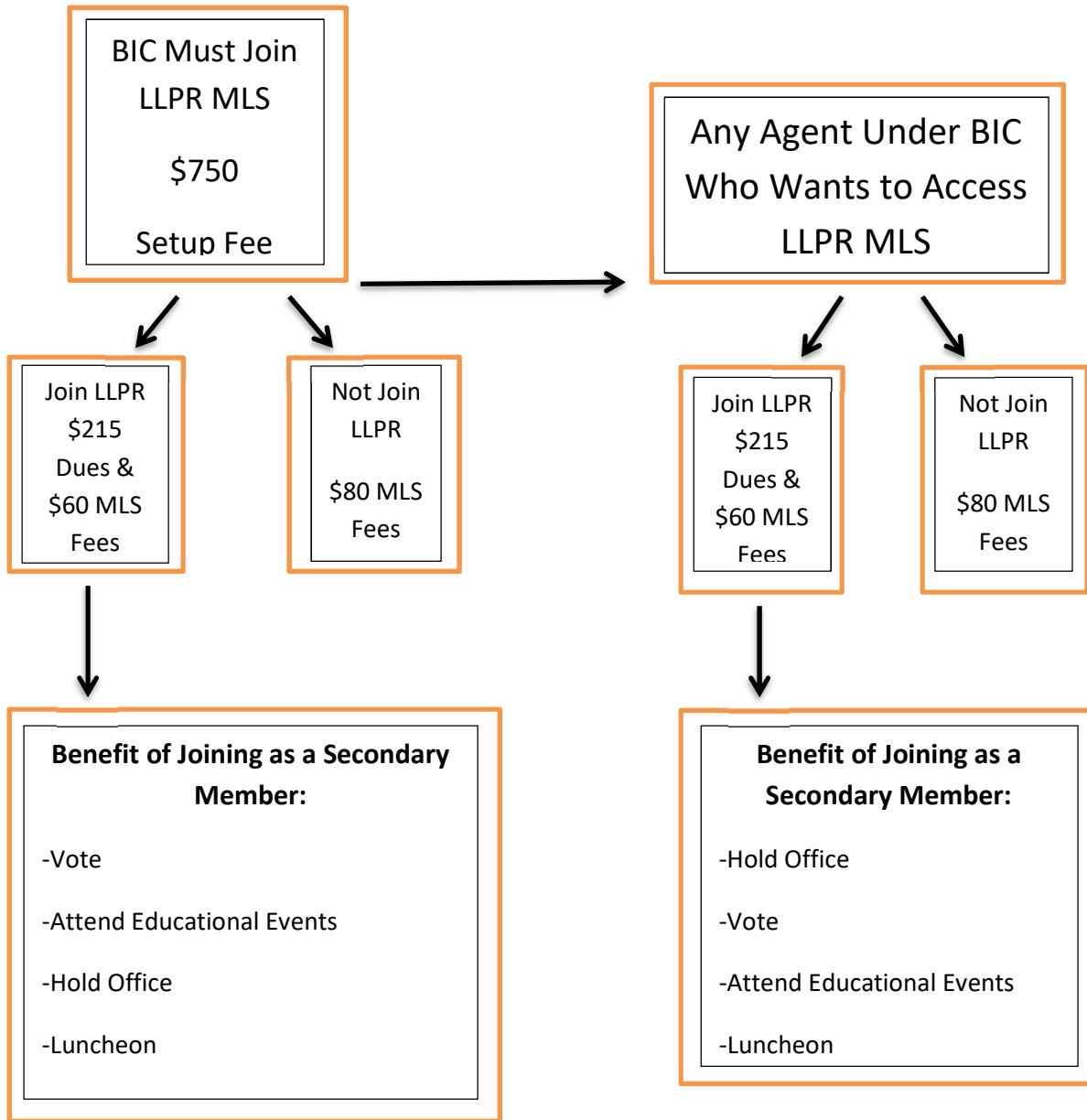
Benefits of joining as a Secondary Member: Attend educational events, Monthly Luncheon, Vote, and Hold Office. Monthly MLS service fees **\$60.00**

MLS Participant:

Any agent who requires MLS access Only, they are not a Member of the Association, no yearly dues required. Monthly MLS Fees **\$80.00**

There is a fee for each listing entered into the MLS - **\$10** per listing, **\$2** per rental

MLS Membership/Service Fees for REALTORS® of Other Associations



Per NAR Board of Choice we Cannot Force Agents to Join LLPR to Gain Access to our MLS.

We are Allowed to Charge a Higher Fee for LLPR Non Member MLS Participants to Cover Cost of Code of Ethics/Professional Standards Enforcement.



LONGLEAF PINE REALTORS®, INC.

P.O. BOX 53189 • 2412 RAEFORD ROAD • FAYETTEVILLE, NORTH CAROLINA 28305
(910) 323-1421 • FAX (910) 323-0955 • www.longleafpinerealtors.com



To serve you more effectively, please call the Association office at (910) 323-1421 to schedule an appointment to get your Supra KEY. Please note that your appointment will take about 30 minutes.

eKEY:

Using eKEY software turns your smartphone into a lockbox key. You may use your BlackBerry, iPhone, or Android powered phone. The eKEY fee is billed on the 23rd of each month by debit or credit card only. The Activation Fee and eKEY FOB/Adapter must be paid for during your initial setup appointment.

Start Date	End Date	Service Type	Monthly Service Fee	Service Fee with Tax	Activation Fee
06/23/19	07/23/20	Basic	16.01	17.13	50.00
06/23/19	07/23/20	Professional	26.20	28.03	50.00

KEYBOXES:

You may purchase a Supra BT iBox from the Association for \$110.00.



LONGLEAF PINE REALTORS®, INC.

P.O. BOX 53189 • 2412 RAEFORD ROAD • FAYETTEVILLE, NORTH CAROLINA 28305
(910) 323-1421 • FAX (910) 323-0955 • www.longleafpinerealtors.com



SECONDARY INFORMATION

Secondary Member
MLS Service Fee \$60.00 a month

MLS Participant Only
MLS Service Fees \$80.00 a month

Name _____

Company _____

Office Address _____

City _____ State _____ Zip _____

Office Phone # _____ Agent Home /Cell Phone # _____

Home Address _____

City _____ State _____ Zip _____

Email address _____

RE License # _____

NRDS # _____

Agent Signature _____ Date _____

Designated REALTOR® Signature _____ Date _____